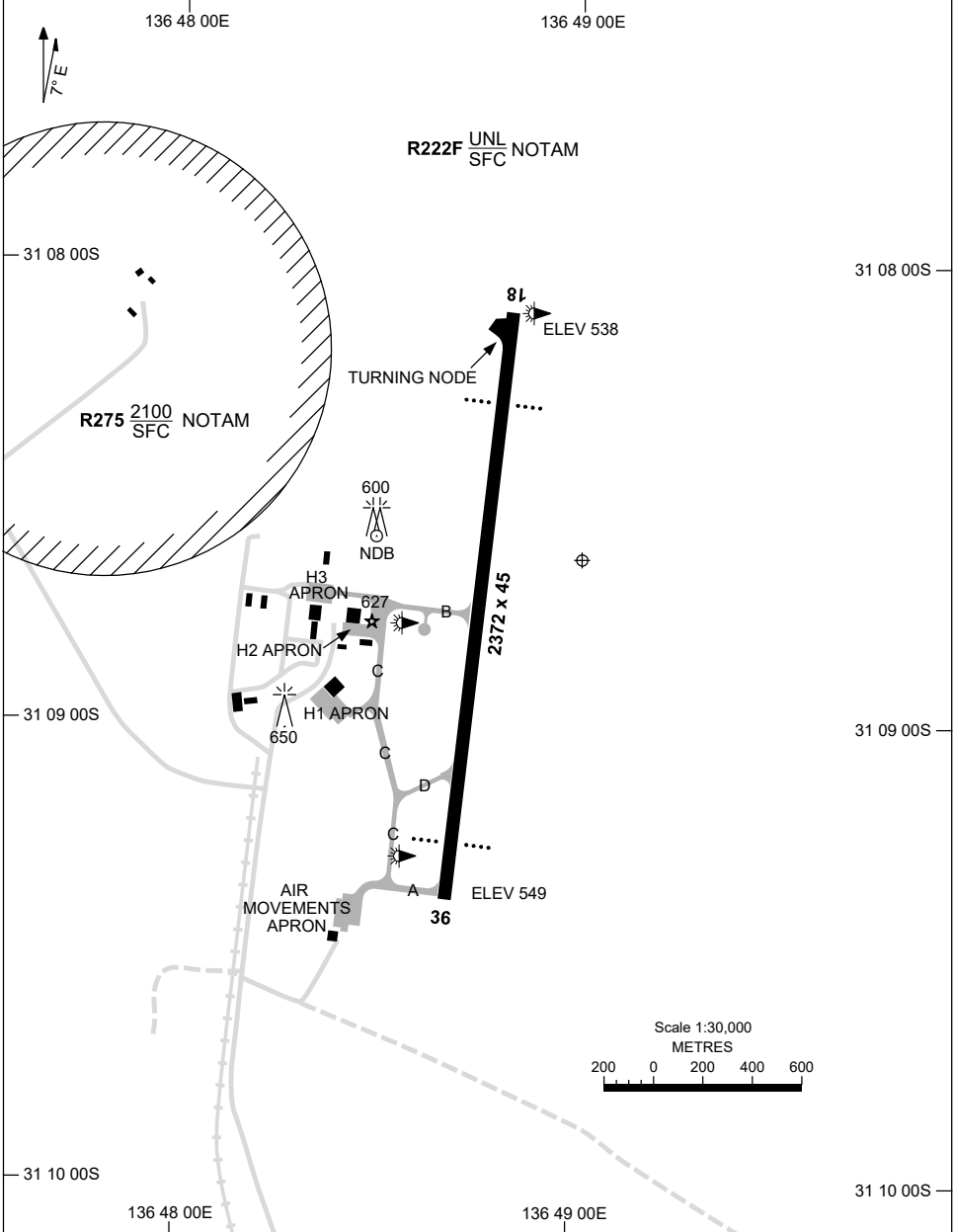


5 SEP 2024

AD ELEV 549  
31 08 39S 136 49 01E

AERODROME CHART - Page 1  
**WOOMERA, SA (YPWR)**

FIA ML CEN 122.0	TWR 118.3 257.8	CTAF+AFRU (AH) 118.3	AFRU+PAL 118.3		Bearings are Magnetic Elevations in FEET AMSL
---------------------	--------------------	-------------------------	-------------------	--	--



Changes: THR ELEV RWY 18.

PWRAD01-180

15 JUN 2023

AD ELEV 549  
31 08 39S 136 49 01E

AERODROME CHART - Page 2  
**WOOMERA, SA (YPWR)**

FIA ML CEN 122.0	TWR 118.3 257.8	CTAF+AFRU (AH) 118.3	AFRU+PAL 118.3		Bearings are Magnetic Elevations in FEET AMSL
<b>RWY</b>	<b>AERODROME LIGHTING</b>				
	ABN : ALTN W/G 2.5 SEC TAXIWAY : GREEN CENTRELINE , TURNING NODE BLUE EDGE RL : AFRU+PAL 118.3 , SDBY (3-5 SEC)				
<b>18</b> <sup>179</sup> 359 <b>36</b>	PAPI BOTH SIDES 3.0° 48FT MIRL PAPI BOTH SIDES 3.0° 48FT MIRL				
<b>NOTES</b>	1. AWIS (PHONE) 08 8150 3820				

Changes: NOTES, SDBY SWITCH OVER TIME.

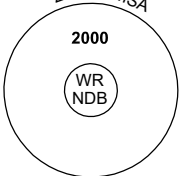
PWRAD02-175

# GNSS ARRIVAL PROCEDURES WOOMERA, SA (YPWR)

15 AUG 2019


FIA <b>ML CEN 122.0</b>	TWR <b>118.3 257.8</b>	CTAF+AFRU (AH) <b>118.3</b>	AFRU+PAL <b>118.3</b>		Bearings are Magnetic Elevations in FEET AMSL
----------------------------	---------------------------	--------------------------------	--------------------------	--	--

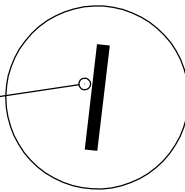
25 NM MSA



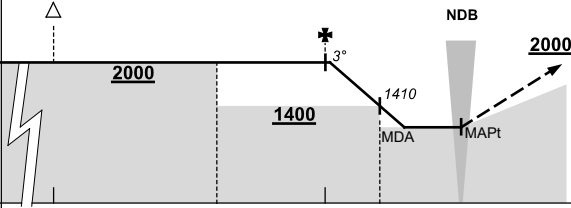
10 NM MSA 2000

**REFERENCE WAYPOINT WR NDB**  
AWIS (PHONE) 08 8150 3820





**AD ELEV 549**

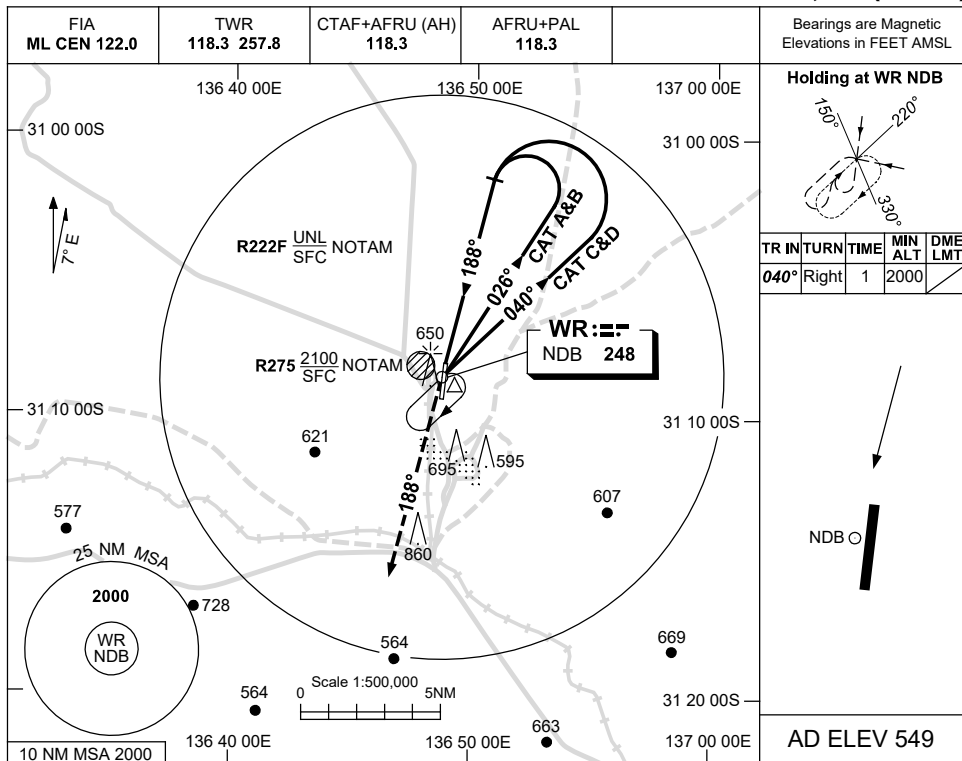
<p><b>ALL TRACKS TO WR NDB</b></p>							<p><b>MISSED APPROACH:</b> CLIMB ON TRACK TO 2000FT.</p> <p><b>NOTE:</b> PROC NOT AVBL WHEN R275 ACTIVE AD WITHIN R222F.</p>	
	NM TO WR NDB	25	15	9	5	3	0	
<b>CIRCLING MINIMA</b>				<b>A,B: 1190-2.4</b>	<b>C: 1290-4.0</b>		<b>D: 1340-5.0</b>	
NM TO WR NDB	4.9	4	3	2.8	2.6	2.3		
ALT (3°APCH PATH)	2000	1730	1410	1340	1290	1190		



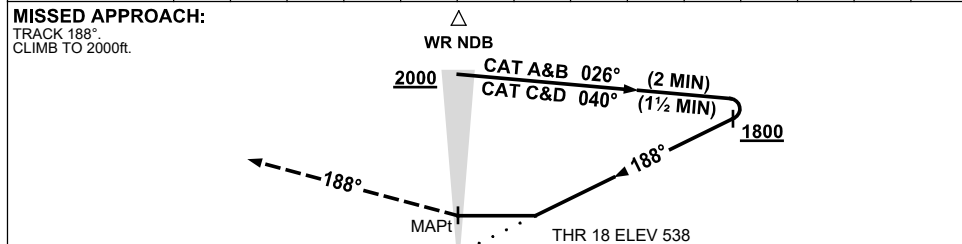
USE QNH

NDB RWY 18  
**WOOMERA, SA (YPWR)**

5 SEP 2024



DME DIST	NOT APPLICABLE									
ALT										



**NOTES**

CATEGORY	A	B	C	D
S-I NDB	<b>1150 (612-3.5)</b>			
CIRCLING	<b>1190 (641-2.4)</b>	<b>1290 (741-4.0)</b>	<b>1340 (791-5.0)</b>	
ALTERNATE	(1141-4.4)	(1241-6.0)	(1291-7.0)	

1. MAX IAS:  
INITIAL : 210KT.
2. AWIS (PHONE)  
08 8150 3820
3. PROC NOT AVBL  
WHEN R275 ACTIVE

Changes: THR ELEV, Editorial.

PWRNB01-180