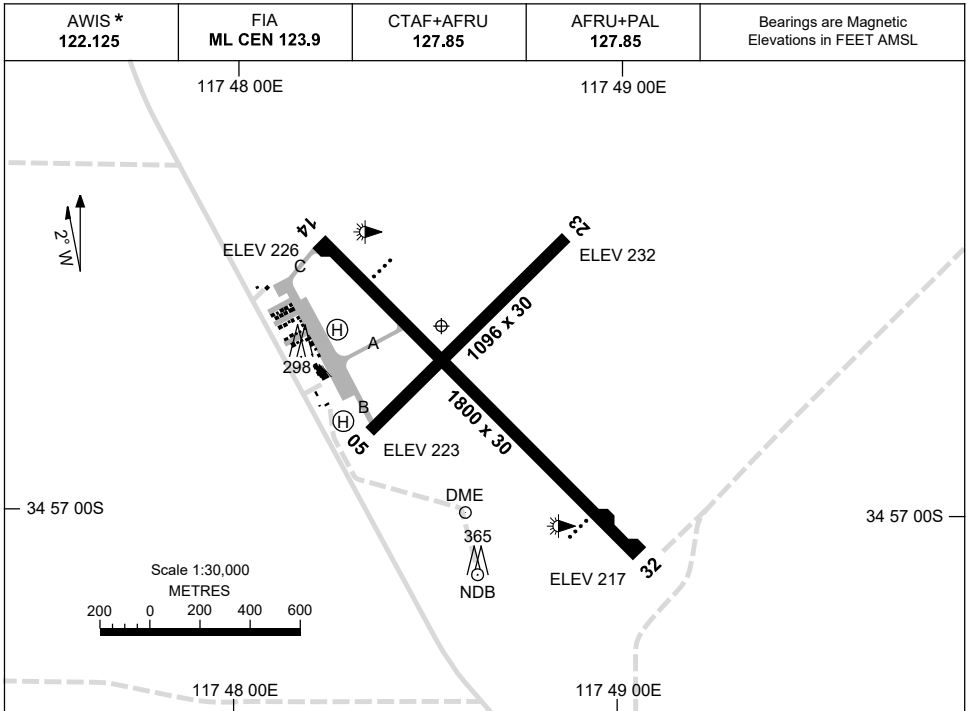


15 JUN 2023

AD ELEV 233
34 56 36S 117 48 32E

AERODROME CHART
ALBANY, WA (YABA)



	AERODROME LIGHTING
RWY	TAXIWAY : TWY A AND B BLUE EDGE RL : AFRU+PAL 127.85 , SDBY (15 SEC) , PTBL (PN 08 6820 3711)
14 ¹³⁷ 317 32	PAPI 3.0° 53FT LIRL PAPI 3.0° 49FT LIRL
05 ⁰⁴⁷ 227 23	NIL NIL

NOTES

* 1. AWIS REQUIRES ONE-SECOND PULSE TO ACTIVATE.

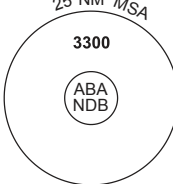
Changes: NOTES.

ABAAD01-175

DME or GNSS ARRIVAL PROCEDURES ALBANY, WA (YABA)


15 AUG 2019

AWIS 122.125	FIA ML CEN 123.9	CTAF+AFRU 127.85	AFRU+PAL 127.85		Bearings are Magnetic Elevations in FEET AMSL
-----------------	---------------------	---------------------	--------------------	--	--



25 NM MSA
3300
ABA NDB

**DME USING ABA DME
REFERENCE WAYPOINT ABA NDB**



* NO CIRCLING

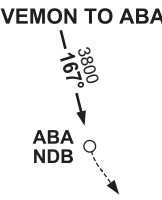
10 NM MSA 2100

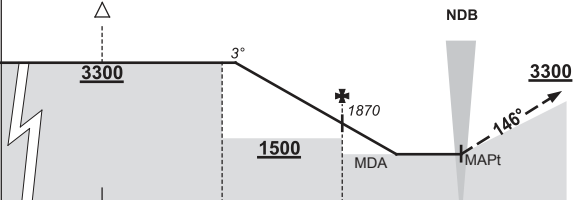
AD ELEV 233

* NO CIRCLING IN SECTOR E OF RWY 14/32 AND S OF RWY 05/23.

ABA	DME	240	109.7
-----	-----	-----	-------

VEMON TO ABA

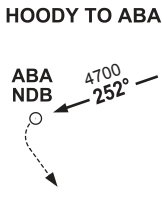


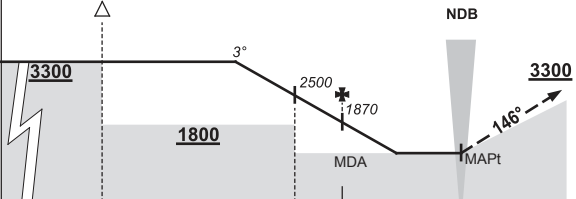


MISSED APPROACH:
TURN LEFT,
TRACK 146°.
CLIMB TO 3300FT.

NM TO ABA NDB	25	15	10	5	0									
CIRCLING MINIMA					A,B: 1120-2.4	C: 1170-4.0	D: 1290-5.0							
NM TO ABA NDB	9.5	9	8	7	6	5	4	3.2	3	2.7				
ALT (3° APCH PATH)	3300	3140	2820	2500	2190	1870	1550	1290	1230	1120				

HOODY TO ABA

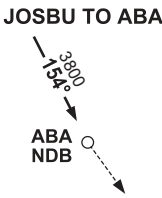


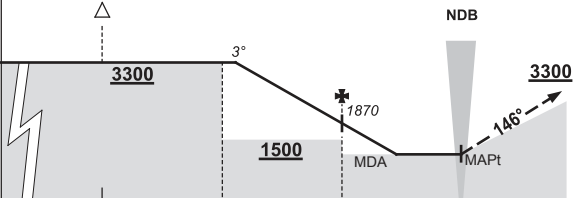


MISSED APPROACH:
TURN LEFT,
TRACK 146°.
CLIMB TO 3300FT.

NM TO ABA NDB	25	15	7	5	0									
CIRCLING MINIMA					A,B: 1120-2.4	C: 1170-4.0	D: 1290-5.0							
NM TO ABA NDB	9.5	9	8	7	6	5	4	3.2	3	2.8	2.7			
ALT (3° APCH PATH)	3300	3140	2820	2500	2190	1870	1550	1290	1230	1170	1120			

JOSBU TO ABA





MISSED APPROACH:
TURN LEFT,
TRACK 146°.
CLIMB TO 3300FT.

NM TO ABA NDB	25	15	10	5	0									
CIRCLING MINIMA					A,B: 1120-2.4	C: 1170-4.0	D: 1290-5.0							
NM TO ABA NDB	9.5	9	8	7	6	5	4	3.2	3	2.7				
ALT (3° APCH PATH)	3300	3140	2820	2500	2190	1870	1550	1290	1230	1120				

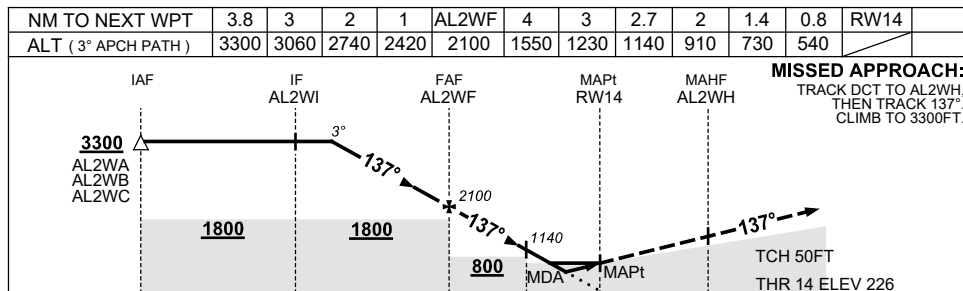
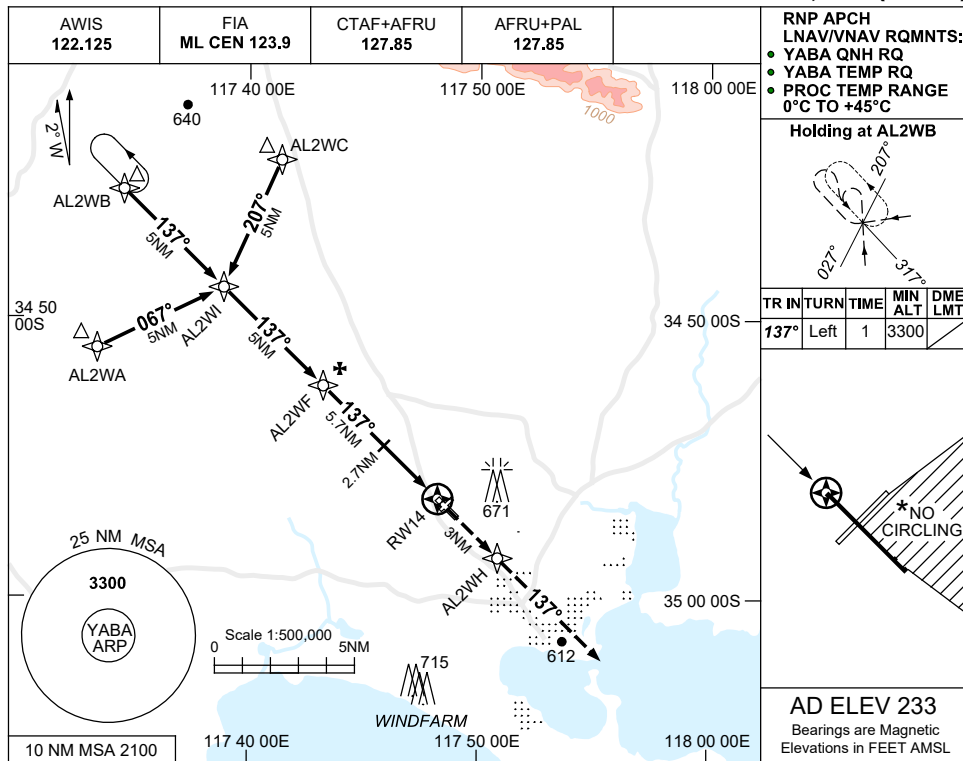
Changes: VEMON TRACK, Editorial.

ABADG01-160

USE QNH

RNP RWY 14
ALBANY, WA (YABA)

7 SEP 2023



MISSED APPROACH:
TRACK DCT TO AL2WH,
THEN TRACK 137°.
CLIMB TO 3300FT.

NOTES

- MAX IAS:
HOLDING : 210KT.
INITIAL : 210KT.
- NO CIRCLING IN SECTOR EAST OF RWY 14/32 & SOUTH OF RWY 05/23.
- COLOR: SEE SPEC NOTICES.

CATEGORY	A	B	C	D
LNAV/VNAV	540 (314-1.7)			
LNAV	730 (504-2.9)			
CIRCLING *	1120 (887-2.4)	1170 (937-4.0)	1290 (1057-5.0)	
ALTERNATE	(1387-4.4)		(1437-6.0)	(1557-7.0)

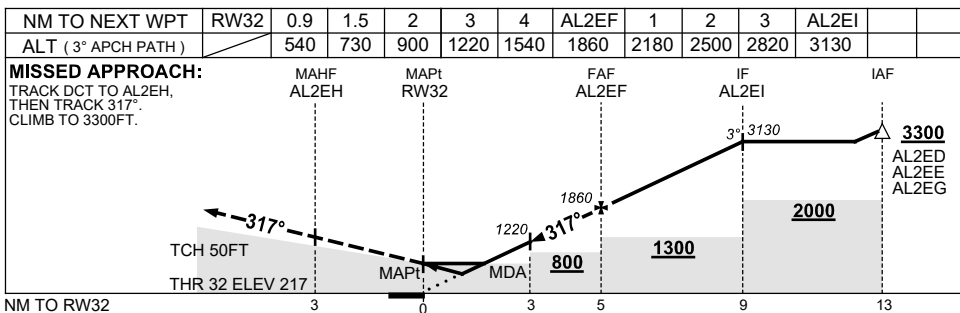
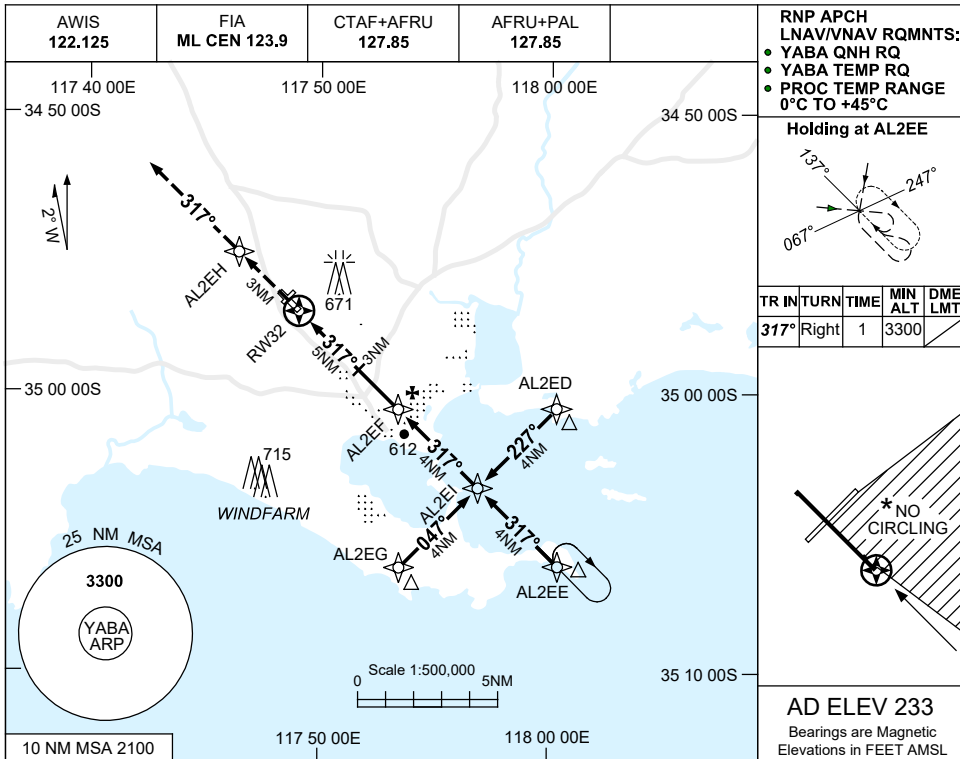
Changes: CHART TITLE, PBN SPECIFICATION BOX, Editorial.

ABAGN01-176

USE QNH

RNP RWY 32
ALBANY, WA (YABA)

7 SEP 2023



NOTES

- MAX IAS:
HOLDING: 210KT.
INITIAL : 210KT.
- NO CIRCLING IN SECTOR EAST OF RWY 14/32 & SOUTH OF RWY 05/23.
- COLOUR: SEE SPEC NOTICES.

CATEGORY	A	B	C	D
LNAV/VNAV	540 (323-1.8)			
LNAV	730 (513-2.9)			
CIRCLING *	1120 (887-2.4)		1170 (937-4.0)	1290 (1057-5.0)
ALTERNATE	(1387-4.4)		(1437-6.0)	(1557-7.0)

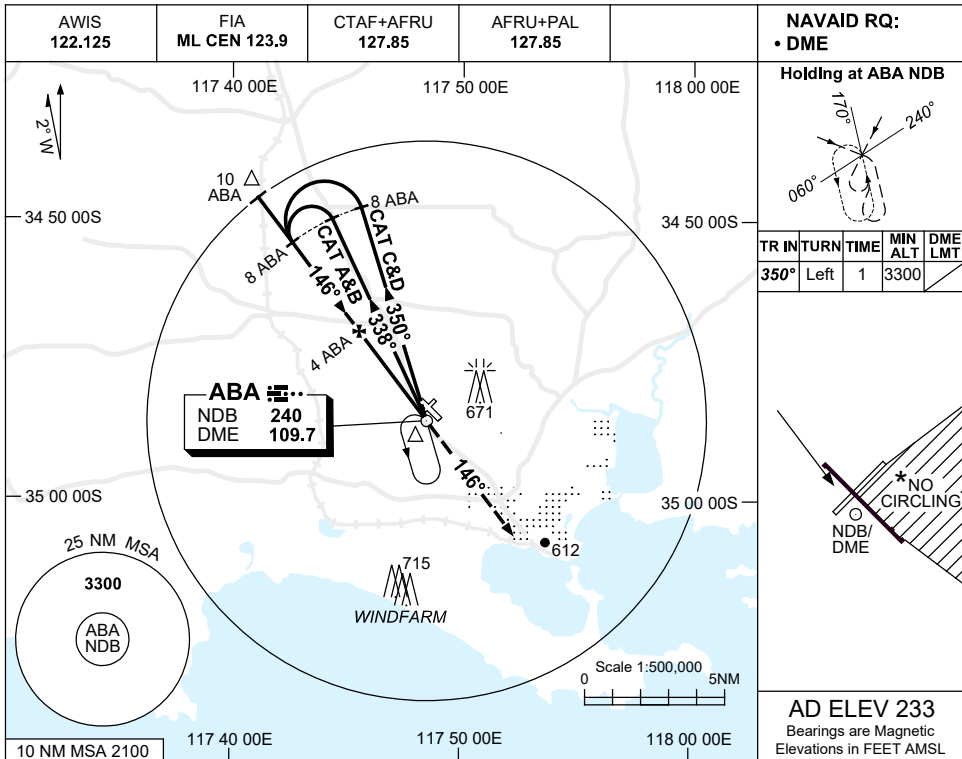
Changes: CHART TITLE, PBN SPECIFICATION BOX, Editorial.

ABAGN02-176

USE QNH

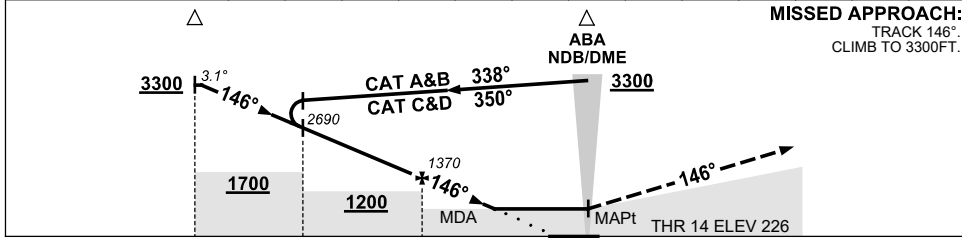
NDB-Y RWY 14
ALBANY, WA (YABA)

7 NOV 2019



AD ELEV 233
 Bearings are Magnetic
 Elevations in FEET AMSL

DIST TO ABA DME	9.8	9	8	7	6	5	4	3	2.4				
ALT (3.1° APCH PATH)	3300	3020	2690	2360	2030	1700	1370	1040	850				



MISSED APPROACH:
 TRACK 146°
 CLIMB TO 3300FT.

NM TO ABA DME: 10, 8, 4, 0

- NOTES**
- MAX IAS:
INITIAL : 210KT.
 - * NO CIRCLING IN SECTOR EAST OF RWY 14/32 & SOUTH OF RWY 05/23.
 - APCH PATH ANGLE DOES NOT COINCIDE WITH PAPI ON GLIDE SLOPE INDICATION.
 - COLOUR: SEE SPEC NOTICES.

CATEGORY	A	B	C	D
S-I NDB/DME	850 (617-3.5)			
CIRCLING *	1120 (887-2.4)	1170 (937-4.0)	1290 (1057-5.0)	
ALTERNATE	(1387-4.4)	(1437-6.0)	(1557-7.0)	

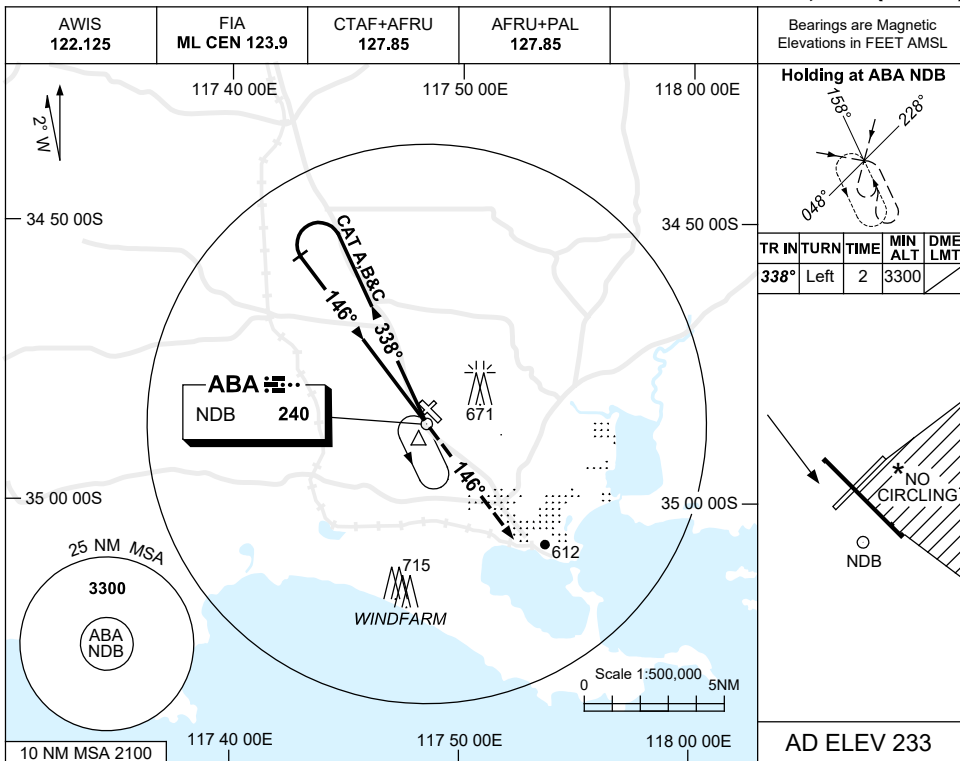
Changes: D136 & 500FT CONTOUR REMOVED.

ABANB01-161

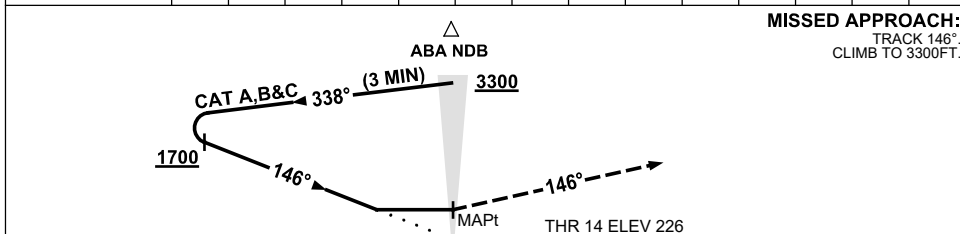
USE QNH

NDB-Z RWY 14
ALBANY, WA (YABA)

7 NOV 2019



DME DIST	NOT APPLICABLE									
ALT										



CATEGORY	A	B	C	D
S-I NDB	1120 (887-5.0)			NOT APPLICABLE
CIRCLING *	1120 (887-2.4)		1170 (937-4.0)	
ALTERNATE	(1387-4.4)		(1437-6.0)	

- NOTES**
- MAX IAS:
 INITIAL :
 CAT A&B 140KT.
 CAT C 210KT.
 - NO CIRCLING IN SECTOR EAST OF RWY 14/32 & SOUTH OF RWY 05/23.
 - COLOUR: SEE SPEC NOTICES.

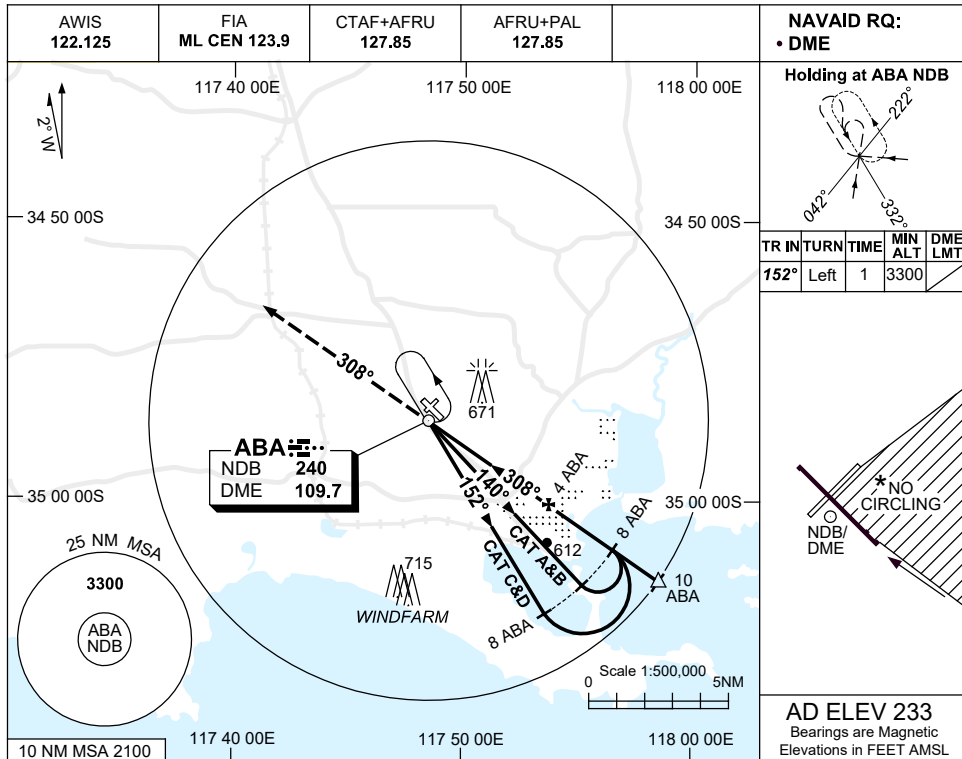
Changes: D136 & 500FT CONTOUR REMOVED.

ABANB02-161

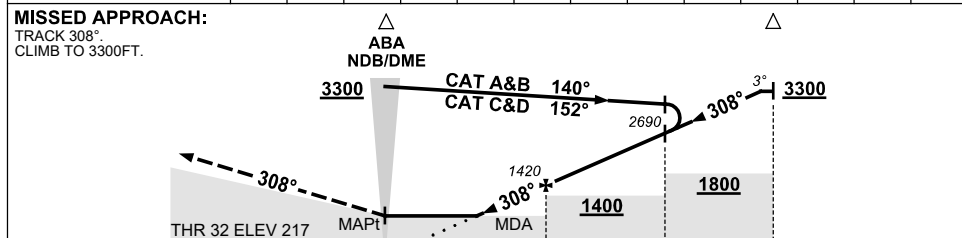
USE QNH

NDB RWY 32
ALBANY, WA (YABA)

7 NOV 2019



DIST TO ABA DME	2	3	4	5	6	7	8	9	9.9				
ALT (3° APCH PATH)	780	1100	1420	1740	2060	2370	2690	3010	3300				



NM TO ABA DME

CATEGORY	A	B	C	D
S-I NDB/DME	780 (563-3.1)			
CIRCLING *	1120 (887-2.4)	1170 (937-4.0)	1290 (1057-5.0)	
ALTERNATE	(1387-4.4)	(1437-6.0)	(1557-7.0)	

- NOTES**
- MAX IAS:
INITIAL :
CAT A&B 140KT.
CAT C 210KT.
 - NO CIRCLING IN SECTOR EAST OF RWY 14/32 & SOUTH OF RWY 05/23.
 - COLOUR: SEE SPEC NOTICES.

Changes: D136 & 500FT CONTOUR REMOVED.

ABANB03-161