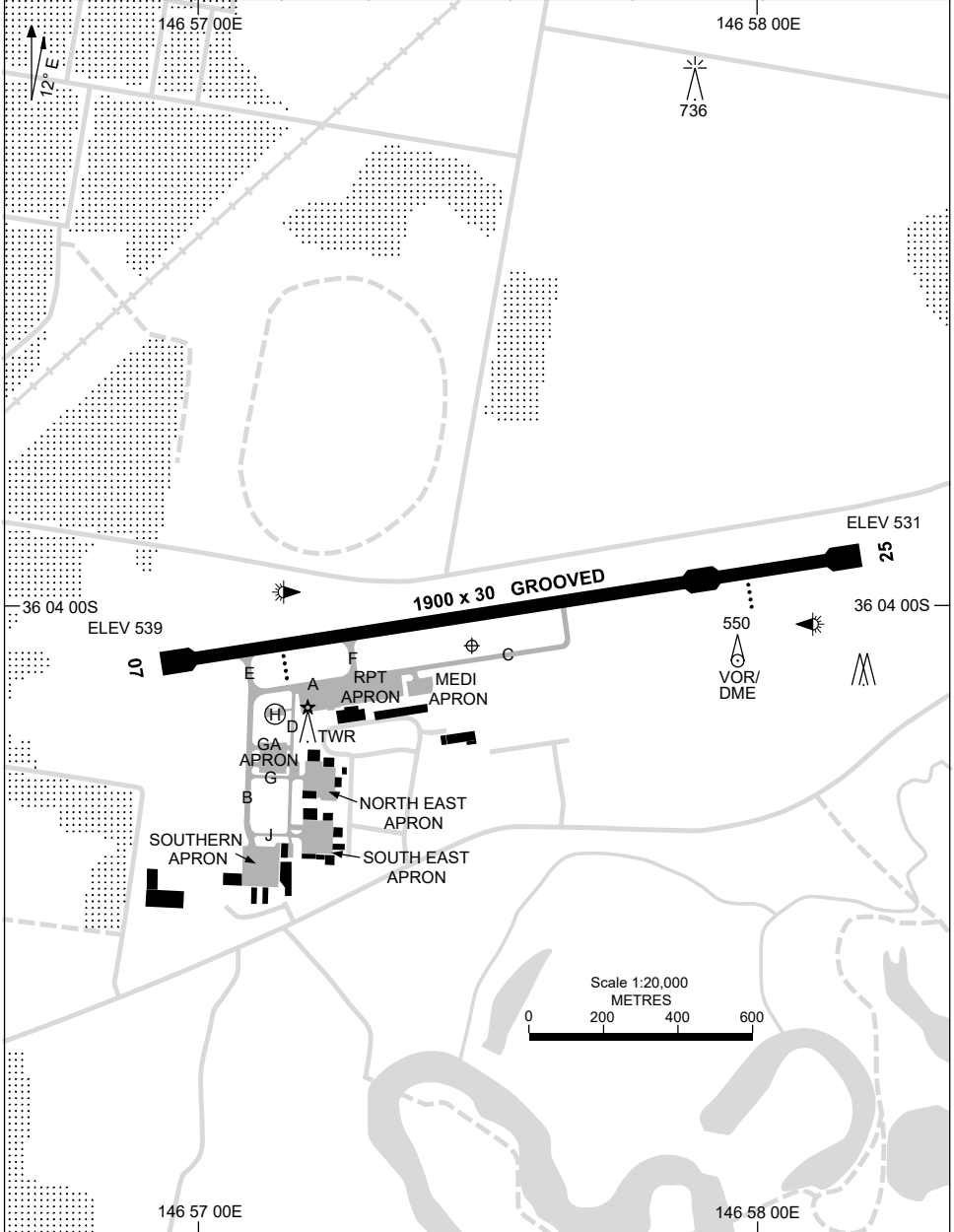


8 SEP 2022

AD ELEV 539
36 04 04S 146 57 29E

AERODROME CHART - Page 1
ALBURY, NSW (YMA)

AWIS 134.525	ATIS 115.6 133.85	TWR 123.25	SMC 121.8	CTAF+AFRU (AH) 123.25	FIA (AH) ML CEN 125.2	AFRU+PAL (AH) 123.25	Bearings are Magnetic Elevations in FEET AMSL
------------------------	-----------------------------	----------------------	---------------------	---------------------------------	---------------------------------	--------------------------------	--



Changes: TWY J, HANGARS.

MAYAD01-172

15 JUN 2023

AD ELEV 539
36 04 04S 146 57 29E

AERODROME CHART - Page 2
ALBURY, NSW (YMAY)

AWIS 134.525	ATIS 115.6 133.85	TWR 123.25	SMC 121.8	CTAF+AFRU (AH) 123.25	FIA (AH) ML CEN 125.2	AFRU+PAL (AH) 123.25	Bearings are Magnetic Elevations in FEET AMSL
RWY	AERODROME LIGHTING						
	ABN : OCC W 6 SEC TAXIWAYS : BLUE EDGE ON TWY A,B,C,E, F AND J. BLUE REFLECTIVE EDGE ON TWY D. RL : AFRU+PAL 123.25 , SDBY (1 SEC DURING LVP , UPTO 15 SEC OT) PTBL IN EMERG						
07 ⁰⁶⁹	PAPI RIGHT SIDE 3.0° 51.6FT MIRL RTIL						
²⁴⁹ 25	PAPI LEFT SIDE 3.0° 51.4FT MIRL RTIL						

NOTES

1. PAPI RWY 25 NOT TO BE USED BEYOND 3NM FROM AD WHEN R368 ACT SFC-2200.
2. AWIS REQUIRES 1 SEC PULSE TO ACTIVATE.

Changes: NOTES.

MAYAD02-175

DME or GNSS ARRIVAL PROCEDURES ALBURY, NSW (YMAJ) Page 1

30 NOV 2023

AWIS 134.525	ATIS 115.6 133.85	TWR 123.25	SMC 121.8	CTAF+AFRU (AH) 123.25	FIA (AH) ML CEN 125.2	AFRU+PAL (AH) 123.25	Bearings are Magnetic Elevations in FEET AMSL
-----------------	----------------------	---------------	--------------	--------------------------	--------------------------	-------------------------	--

25 NM MSA
3400
5400
R-025
R-225
AY VOR of YMAJ ARP

**DME USING AY DME
REFERENCE WAYPOINT AY VOR**

AY VOR/DME 115.6

10 NM MSA 4200

AD ELEV 539

SECTOR A

181°
236°
AY VOR

VOR
3400
239°

MISSED APPROACH:

TURN RIGHT,
TRACK 239°.
CLIMB TO 3400FT.

NOTE: PROC NOT AVBL
WHEN R368 ACT
UNLESS ADVISED BY
ATC.

NM TO AY VOR/DME	25	17	15	12	8	5	0													
CIRCLING MINIMA	A,B: 2080-2.4			C: 2220-4.0			D: 2270-5.0													
NM TO AY VOR/DME	11.9	11	10	9	8	7	6	5	4	3.3	3.2	2.8								
ALT (3° APCH PATH)	5000	4710	4390	4070	3750	3430	3110	2800	2480	2270	2220	2080								

SECTOR B

026°
237°
AY VOR

VOR
3400
239°

MISSED APPROACH:

TURN AS
APPROPRIATE,
TRACK 239°.
CLIMB TO 3400FT.

NOTE: PROC NOT AVBL
WHEN R368 ACT
UNLESS ADVISED BY
ATC.

NM TO AY VOR/DME	25	16	15	9	6	5	3	0												
CIRCLING MINIMA	A,B: 2050-2.4			C: 2220-4.0			D: 2270-5.0													
NM TO AY VOR/DME	9.3	9	8	7	6	5	4	3	2	1	0.7	0.5	0							
ALT (3° APCH PATH)	5000	4920	4600	4280	3960	3640	3320	3010	2690	2370	2270	2220	2050							

SECTOR C

062°
027°
AY VOR

VOR
3400
239°

MISSED APPROACH:

TURN LEFT,
TRACK 239°.
CLIMB TO 3400FT.

NOTE: PROC NOT AVBL
WHEN R368 ACT
UNLESS ADVISED BY
ATC.

NM TO AY VOR/DME	25	17	15	9	6	5	4	3	2											
CIRCLING MINIMA	A,B: 2050-2.4			C: 2220-4.0			D: 2270-5.0													
NM TO AY VOR/DME	10.6	10	9	8	7	6	5	4	3	2	1.8	1.3								
ALT (3° APCH PATH)	5000	4820	4500	4190	3870	3550	3230	2910	2590	2270	2220	2050								

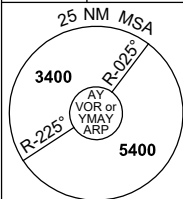
Changes: SEC-A CAT AB MINIMA, CIRCLING CAT C MINIMA, DIST-ALT TABLE, NEW LOGO.

MAYDG01-177

DME or GNSS ARRIVAL PROCEDURES ALBURY, NSW (YMAY) Page 2

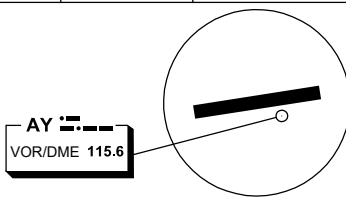
30 NOV 2023

AWIS 134.525	ATIS 115.6 133.85	TWR 123.25	SMC 121.8	CTAF+AFRU (AH) 123.25	FIA (AH) ML CEN 125.2	AFRU+PAL (AH) 123.25	Bearings are Magnetic Elevations in FEET AMSL
-----------------	----------------------	---------------	--------------	--------------------------	--------------------------	-------------------------	--



**DME USING AY DME
REFERENCE WAYPOINT AY VOR**

10 NM MSA 4200



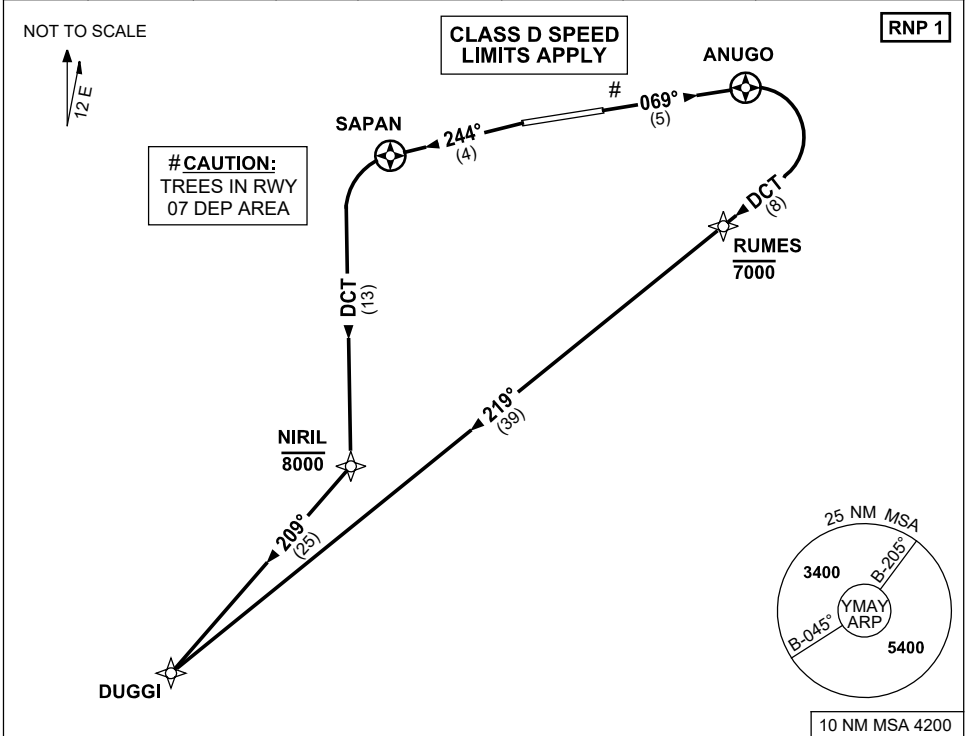
AD ELEV 539

<p>SECTOR D</p>		<p>MISSED APPROACH:</p> <p>TURN AS APPROPRIATE, TRACK 239°. CLIMB TO 3400FT.</p> <p>NOTE: PROC NOT AVBL WHEN R368 ACT UNLESS ADVISED BY ATC.</p>
<p>NM TO AY VOR/DME</p>	<p>25 15 8 5 2 0</p>	
CIRCLING MINIMA		
	A,B: 2130-2.4	C: 2220-4.0
<p>NM TO AY VOR/DME</p>	5.5 5 4 3 2 1.9 1.7 1.5	
<p>ALT (3° APCH PATH)</p>	3400 3260 2940 2620 2300 2270 2220 2130	

**STANDARD INSTRUMENT DEPARTURES (SID)
DUGGI ONE DEPARTURE (RNAV)
ALBURY, NSW (YMAY)**

30 NOV 2023

AWIS 134.525	ATIS 115.6 133.85	TWR 123.25	SMC 121.8	CTAF+AFRU (AH) 123.25	FIA (AH) ML CEN 125.2	AFRU+PAL (AH) 123.25	Bearings are Magnetic Elevations in FEET AMSL
-----------------	----------------------	---------------	--------------	--------------------------	--------------------------	-------------------------	--



DUGGI ONE DEPARTURE

RWY 07

- GRAD 5.6% TO 2600ft THEN 3.3%
- Track 069° to ANUGO
- Turn RIGHT, track DCT to RUMES
Cross RUMES AT or BLW 7000ft
- Track 219° to DUGGI

NOTE: PROC NOT AVBL WHEN R368 ACT UNLESS ADVISED BY ATC.

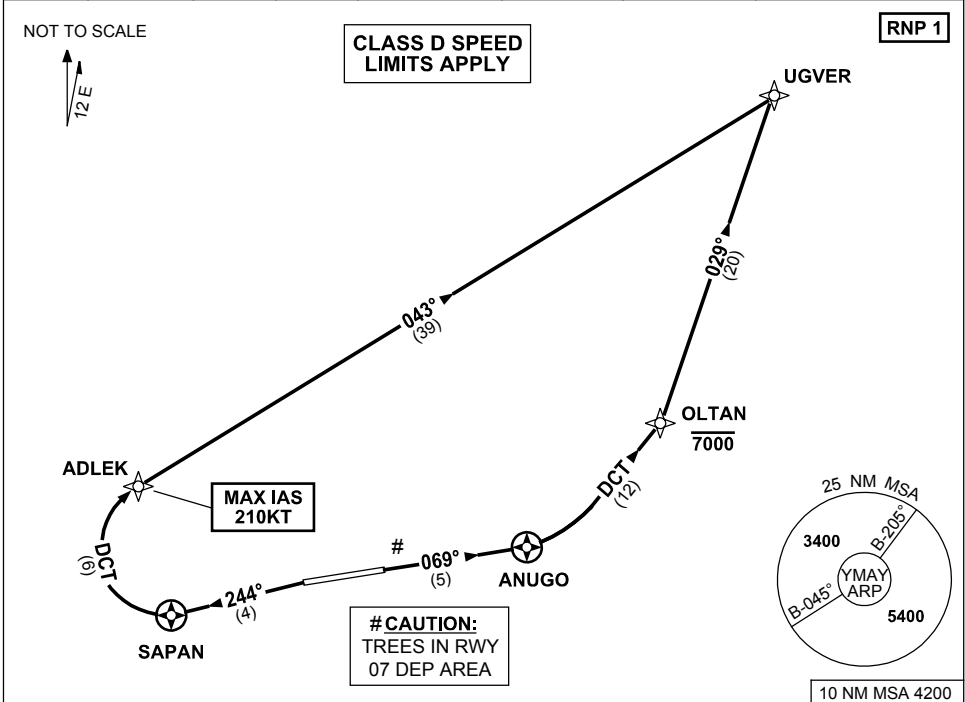
RWY 25

- GRAD 4.8% TO 1400ft THEN 3.3% (5.0% TO 2500ft)
- NOT BEFORE DER turn LEFT, track 244° to SAPAN
- Turn LEFT, track DCT to NIRIL
Cross NIRIL AT or BLW 8000ft
- Turn RIGHT, track 209° to DUGGI

STANDARD INSTRUMENT DEPARTURES (SID)
UGVER ONE DEPARTURE (RNAV)
ALBURY, NSW (YMAY)

30 NOV 2023

AWIS 134.525	ATIS 115.6 133.85	TWR 123.25	SMC 121.8	CTAF+AFRU (AH) 123.25	FIA (AH) ML CEN 125.2	AFRU+PAL (AH) 123.25	Bearings are Magnetic Elevations in FEET AMSL
-----------------	----------------------	---------------	--------------	--------------------------	--------------------------	-------------------------	--



UGVER ONE DEPARTURE

RWY 07

- GRAD 4.8% TO 1700ft THEN 3.3%
- Track 069° to ANUGO
- Turn LEFT, track DCT to OLTAN
 Cross OLTAN AT or BLW 7000ft
- Track 029° to UGVER

RWY 25

- GRAD 4.8% TO 1900ft THEN 3.3% (5.0% TO 2500ft)
- NOT BEFORE DER turn LEFT, track 244° to SAPAN
- Turn RIGHT, track DCT to ADLEK
 MAX IAS 210KT to ADLEK
- Track 043° to UGVER

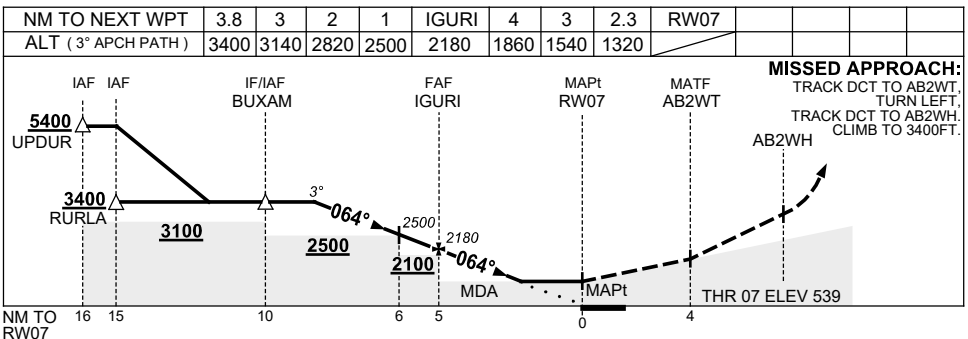
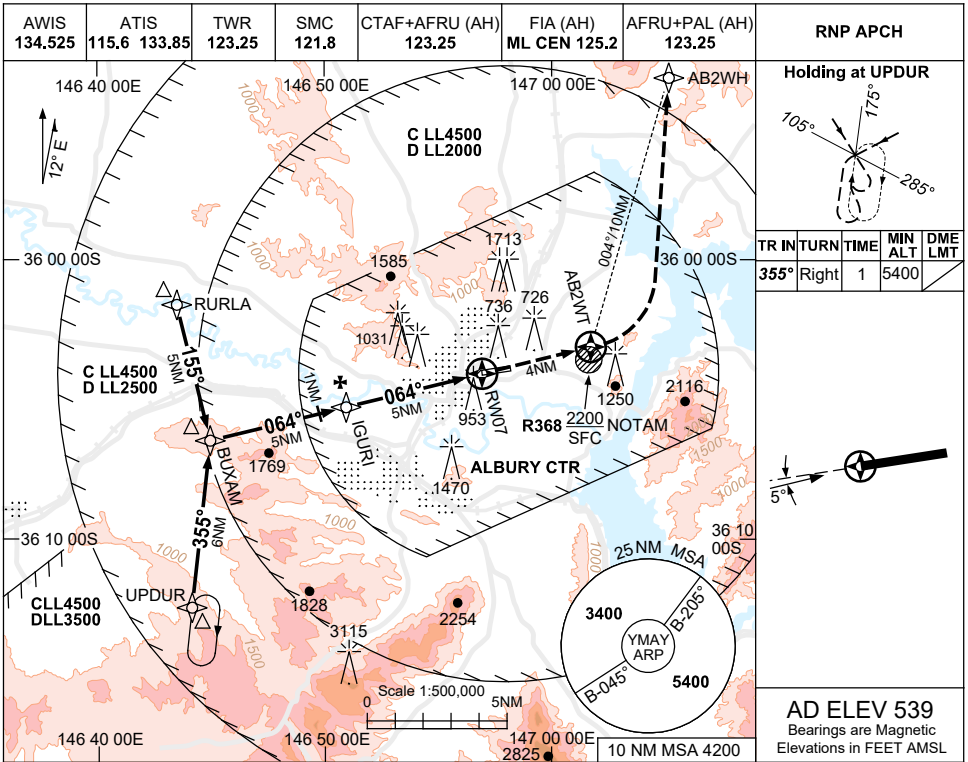
NOTE: PROC NOT AVBL WHEN R368 ACT UNLESS ADVISED BY ATC.

USE QNH

RNP Z RWY 07

ALBURY, NSW (YMAJ)

30 NOV 2023



NOTES

CATEGORY	A	B	C	D
LNAV	1320 (781-4.5)			
CIRCLING	2050 (1511-2.4)		2220 (1681-4.0) 2270 (1731-5.0)	
ALTERNATE	(2011-4.4)		(2181-6.0) (2231-7.0)	

1. MAX IAS: INITIAL : 210KT.
2. **COLOUR:** SEE SPEC NOTICES.
3. PROC NOT AVBL WHEN R368 ACT UNLESS ADVISED BY ATC.

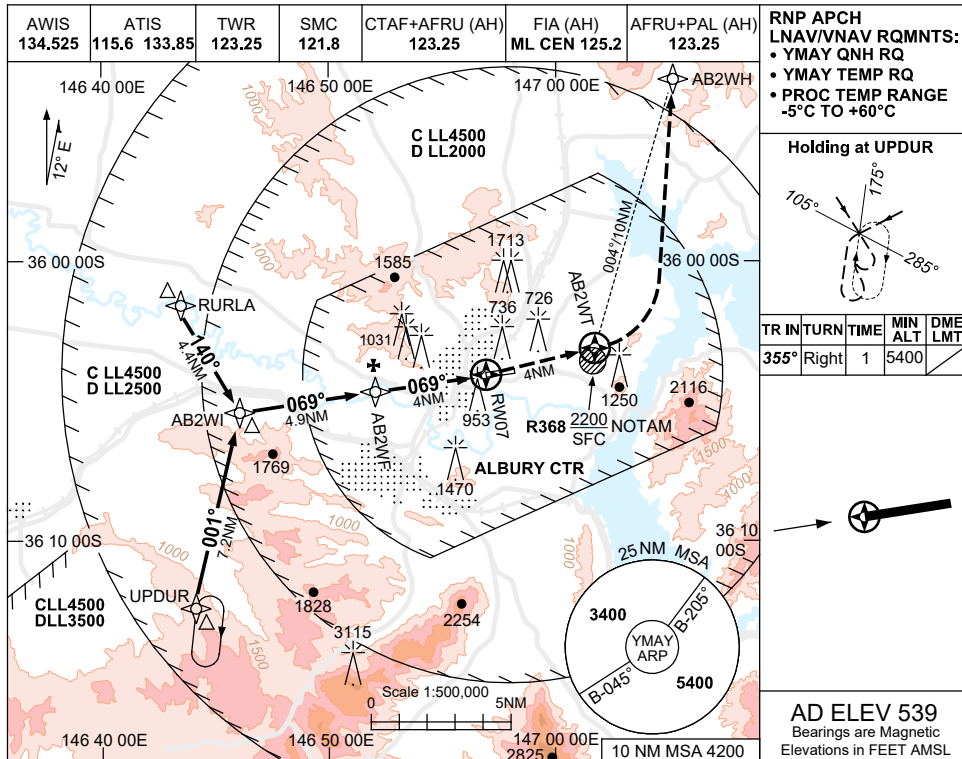
Changes: LNAV MINIMA, CIRCLING & ALTERNATE CAT C MINIMA, DIST-ALT TABLE, NEW LOGO.

MAYGN02-177

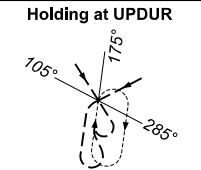
USE QNH RNP Y RWY 07 (LNAV/VNAV ONLY)

ALBURY, NSW (YMAY)

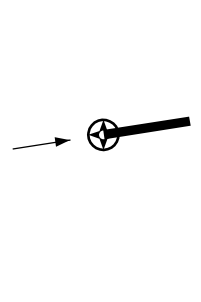
30 NOV 2023



RNP APCH
LNAV/VNAV RQMNTS:
 • YMAY QNH RQ
 • YMAY TEMP RQ
 • PROC TEMP RANGE
 -5°C TO +60°C

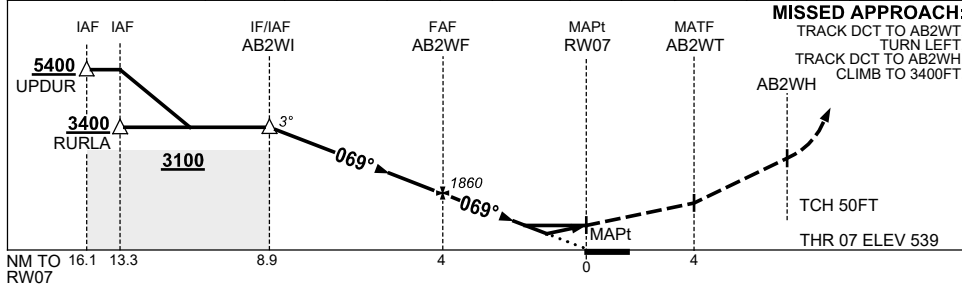


TR	IN	TURN	TIME	MIN ALT	DME LMT
355°	Right	1	5400		



AD ELEV 539
 Bearings are Magnetic
 Elevations in FEET AMSL

NM TO NEXT WPT	AB2WI	4	3	2	1	AB2WF	3	2	RW07
ALT (3° APCH PATH)	3400	3140	2820	2500	2180	1860	1540	1220	



MISSED APPROACH:
 TRACK DCT TO AB2WT,
 TURN LEFT,
 TRACK DCT TO AB2WH,
 CLIMB TO 3400FT.
 TCH 50FT
 THR 07 ELEV 539

NOTES

- MAX IAS: INITIAL : 210KT.
- COLOUR: SEE SPEC NOTICES.
- CIRCLING NOT AVBL WHEN R368 ACT.

CATEGORY	A	B	C	D
LNAV/VNAV	1220 (681-3.9)			
CIRCLING	2050 (1511-2.4)	2220 (1681-4.0)	2270 (1731-5.0)	
ALTERNATE	(2011-4.4)	(2181-6.0)	(2231-7.0)	

Changes: CIRCLING & ALTERNATE CAT C MINIMA, NEW LOGO.

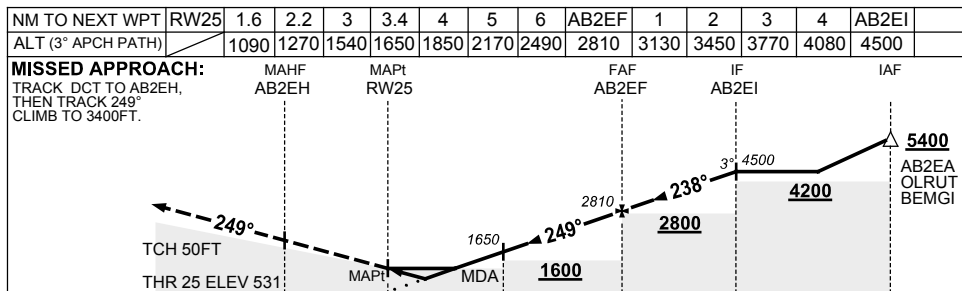
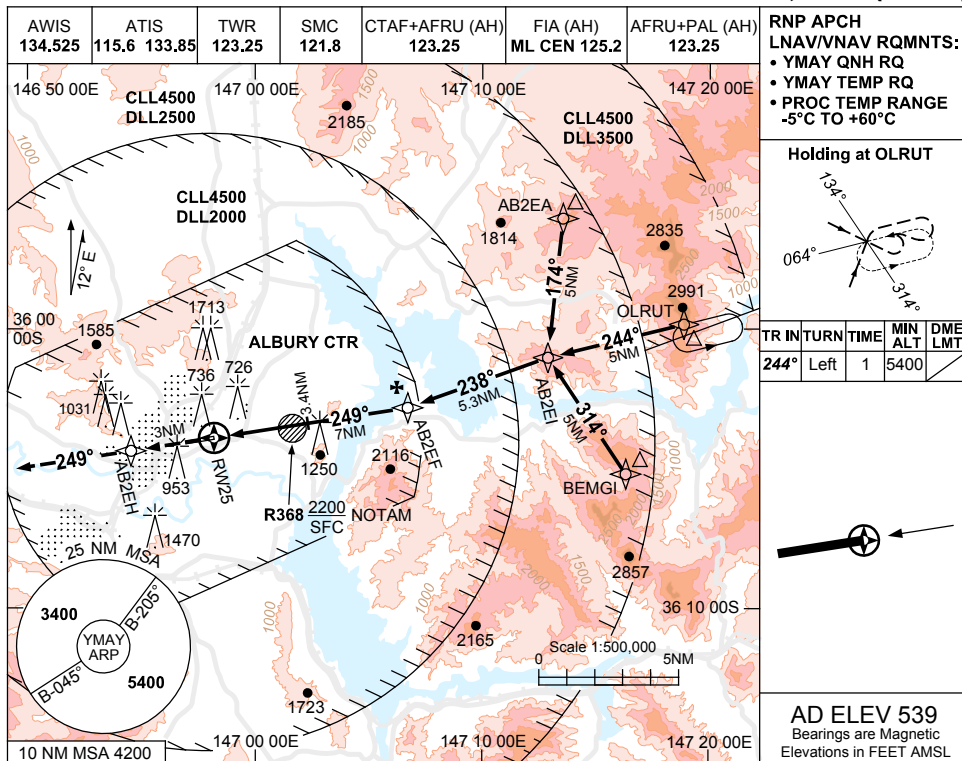
MAYGN03-177

USE QNH

RNP RWY 25

ALBURY, NSW (YMAY)

30 NOV 2023



NOTES

- MAX IAS: INITIAL : 210KT.
- COLOUR: SEE SPEC NOTICES.
- HLDG NOT CONTAINED IN CTA.
- PROC NOT AVBL WHEN R368 ACT UNLESS ADVISED BY ATC.

CATEGORY	A	B	C	D
LNAV/VNAV		1090 (559-3.2)		
LNAV		1270 (739-4.2)		
CIRCLING	2050 (1511-2.4)		2220 (1681-4.0)	2270 (1731-5.0)
ALTERNATE	(2011-4.4)		(2181-6.0)	(2231-7.0)

Changes: CIRCLING & ALTERNATE CAT C MINIMA, Editorial.

MAYGN04-177

**STANDARD INSTRUMENT ARRIVAL (STAR)
VEGRU ONE ARRIVAL (RNAV)
ALBURY, NSW (YMAJ)**

23 MAR 2023

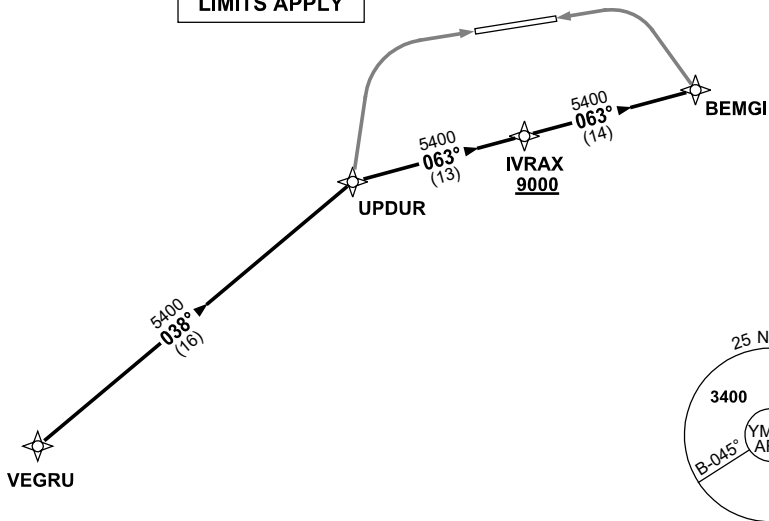
AWIS 134.525	ATIS 115.6 133.85	TWR 123.25	SMC 121.8	CTAF+AFRU (AH) 123.25	FIA (AH) ML CEN 125.2	AFRU+PAL (AH) 123.25	Bearings are Magnetic Elevations in FEET AMSL
-----------------	----------------------	---------------	--------------	--------------------------	--------------------------	-------------------------	--

NOT TO SCALE



**CLASS D SPEED
LIMITS APPLY**

RNP 1



10 NM MSA 4200

ARRIVAL: VEGRU ONE

- From VEGRU track 038° to UPDUR

RWY 07:

- Track via RNP Z RWY 07 or RNP Y RWY 07 (LNAV/VNAV ONLY)

NOTE: PROC NOT AVBL WHEN R368 ACT UNLESS ADVISED BY ATC.

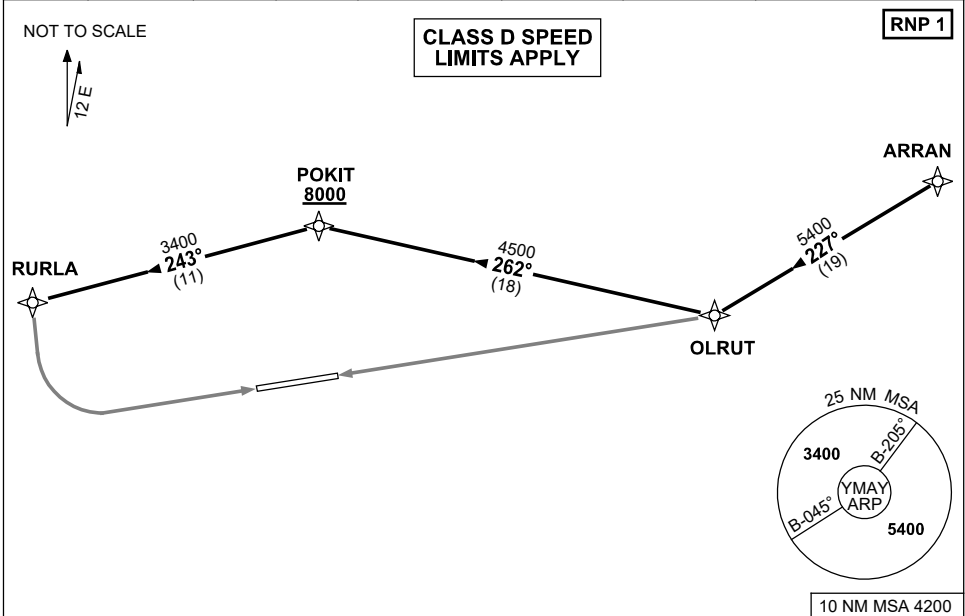
RWY 25:

- Track 063° to IVRAX
 Cross IVRAX AT or ABV 9000ft
- Track 063° to BEMGI
- Track via RNP RWY 25

**STANDARD INSTRUMENT ARRIVAL (STAR)
ARRAN ONE ARRIVAL (RNAV)
ALBURY, NSW (YMAY)**

23 MAR 2023

AWIS 134.525	ATIS 115.6 133.85	TWR 123.25	SMC 121.8	CTAF+AFRU (AH) 123.25	FIA (AH) ML CEN 125.2	AFRU+PAL (AH) 123.25	Bearings are Magnetic Elevations in FEET AMSL
-----------------	----------------------	---------------	--------------	--------------------------	--------------------------	-------------------------	--



ARRIVAL: ARRAN ONE

- From ARRAN track 227° to OLRUT

RWY 07:

- Track 262° to POKIT
Cross POKIT AT or ABV 8000ft
- Turn LEFT, track 243° to RURLA
- Track via RNP Z RWY 07 or RNP Y RWY 07 (LNAV/VNAV ONLY)

RWY 25:

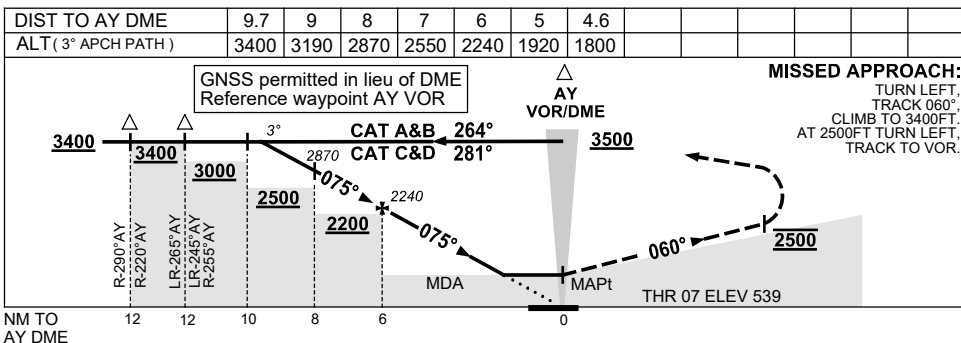
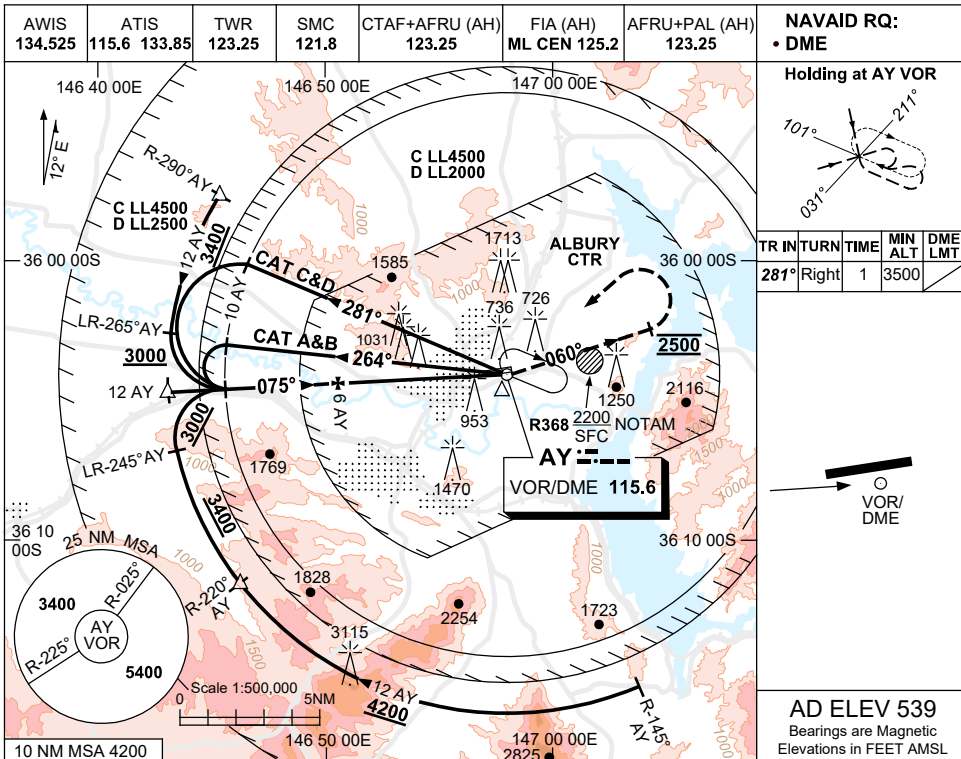
- Track via RNP RWY 25

NOTE: PROC NOT AVBL WHEN R368 ACT UNLESS ADVISED BY ATC.

USE QNH

VOR RWY 07
ALBURY, NSW (YMAV)

30 NOV 2023



NOTES

CATEGORY	A	B	C	D
S-I VOR/DME	1800 (1261-5.0)			
CIRCLING	2050 (1511-2.4)	2220 (1681-4.0)	2270 (1731-5.0)	
ALTERNATE	(2011-4.4)	(2181-6.0)	(2231-7.0)	

1. COLOUR: SEE SPEC NOTICES.
2. CIRCLING NOT AVBL WHEN R368 ACT.

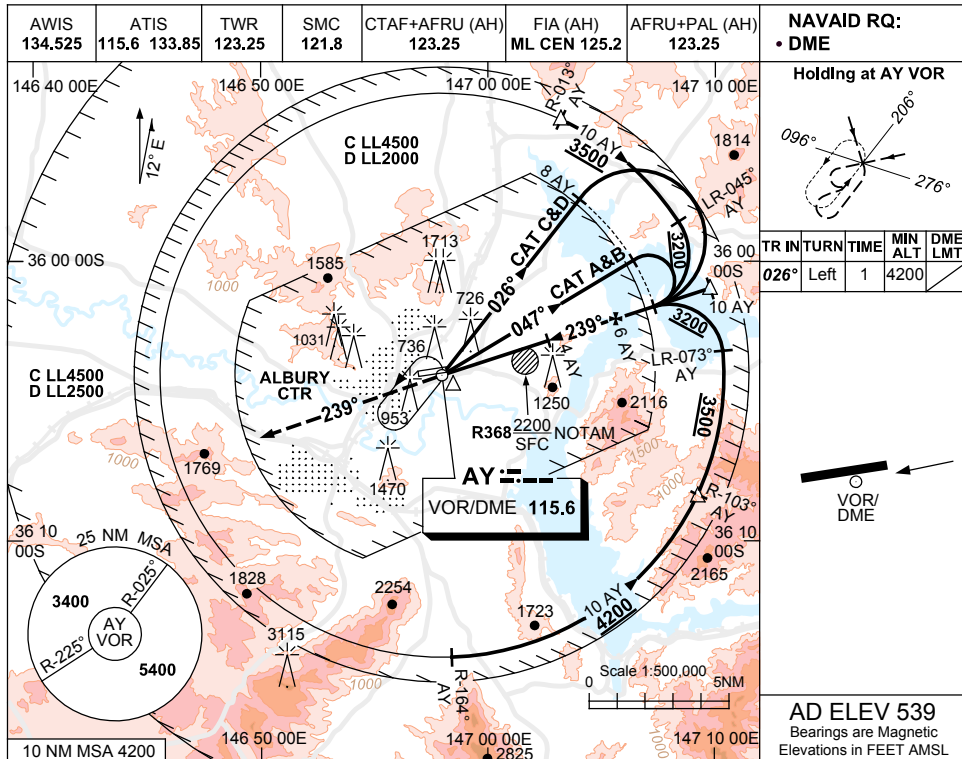
Changes: CIRCLING & ALTERNATE CAT C MINIMA, NEW LOGO.

MAYV001-177

USE QNH

VOR RWY 25
ALBURY, NSW (YMAJ)

30 NOV 2023



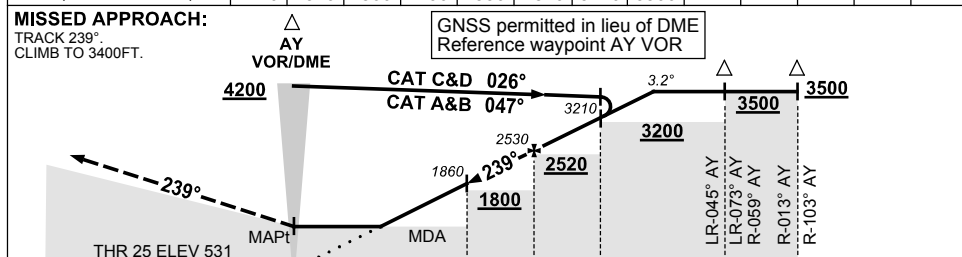
NAVAID RQ:
 • DME

Holding at AY VOR

TR IN	TURN	TIME	MIN ALT	DME LMT
026°	Left	1	4200	

AD ELEV 539
 Bearings are Magnetic
 Elevations in FEET AMSL

DIST TO AY DME	2.3	3	4	5	6	7	8	8.9			
ALT (3.2° APCH PATH)	1270	1520	1860	2190	2530	2870	3210	3500			



NOTES

- MAX IAS: BASETURN
CAT C&D : 200KT.
- APCH PATH ANGLE DOES NOT COINCIDE WITH PAPI ON GLIDE SLOPE INDICATION.
- COLOUR: SEE SPEC NOTICES.
- PROC NOT AVBL WHEN R368 ACT UNLESS ADVISED BY ATC.

CATEGORY	A	B	C	D
S-I VOR/DME	1270 (739-4.2)			
CIRCLING	2050 (1511-2.4)	2220 (1681-4.0)	2270 (1731-5.0)	
ALTERNATE	(2011-4.4)		(2181-6.0)	(2231-7.0)

Changes: CIRCLING & ALTERNATE CAT C MINIMA, NEW LOGO.

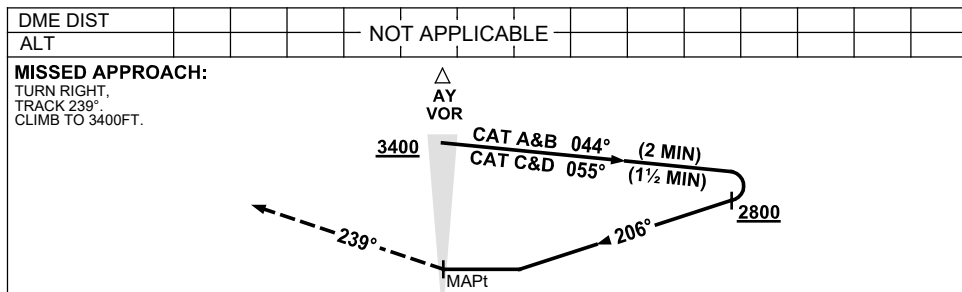
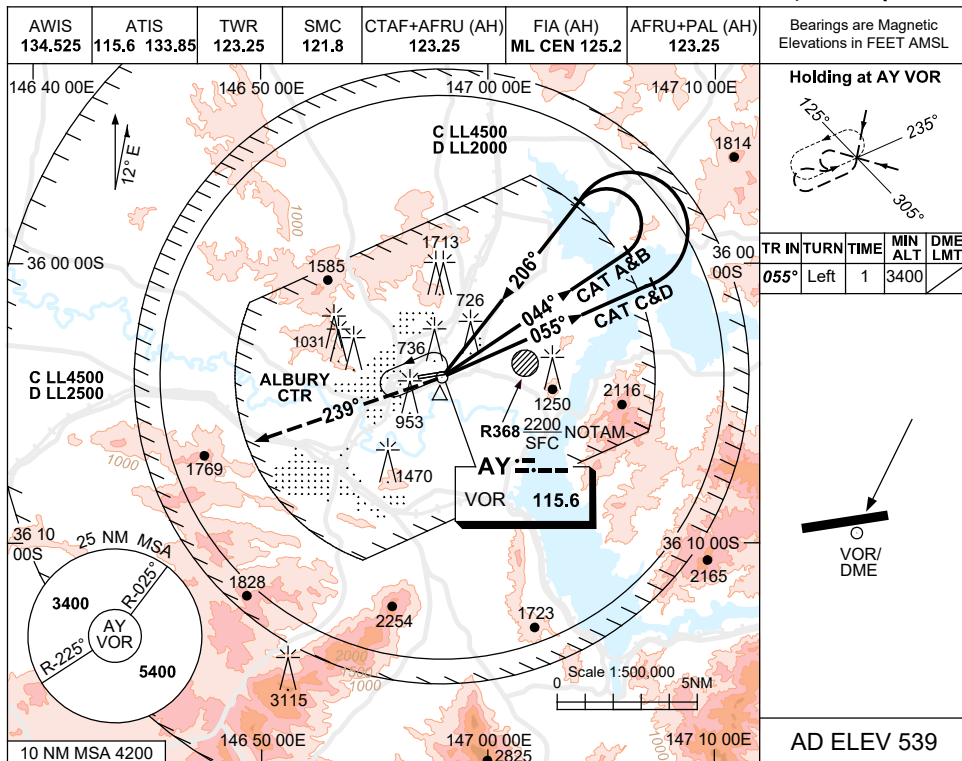
MAYVO02-177

USE QNH

VOR-A

30 NOV 2023

ALBURY, NSW (YMAJ)



NOTES

- MAX IAS :
HOLDING : 180KT.
INITIAL : 185KT.
- COLOUR: SEE SPEC NOTICES.
- PROC NOT AVBL WHEN R368 ACT UNLESS ADVISED BY ATC.

CATEGORY	A	B	C	D
CIRCLING	2050 (1511-2.4)	2220 (1681-4.0)	2270 (1731-5.0)	
ALTERNATE	(2011-4.4)	(2181-6.0)	(2231-7.0)	

Changes: CIRCLING & ALTERNATE CAT C MINIMA, BASE TURN ALTITUDE, NOTE 3, NEW LOGO.

MAYV003-177