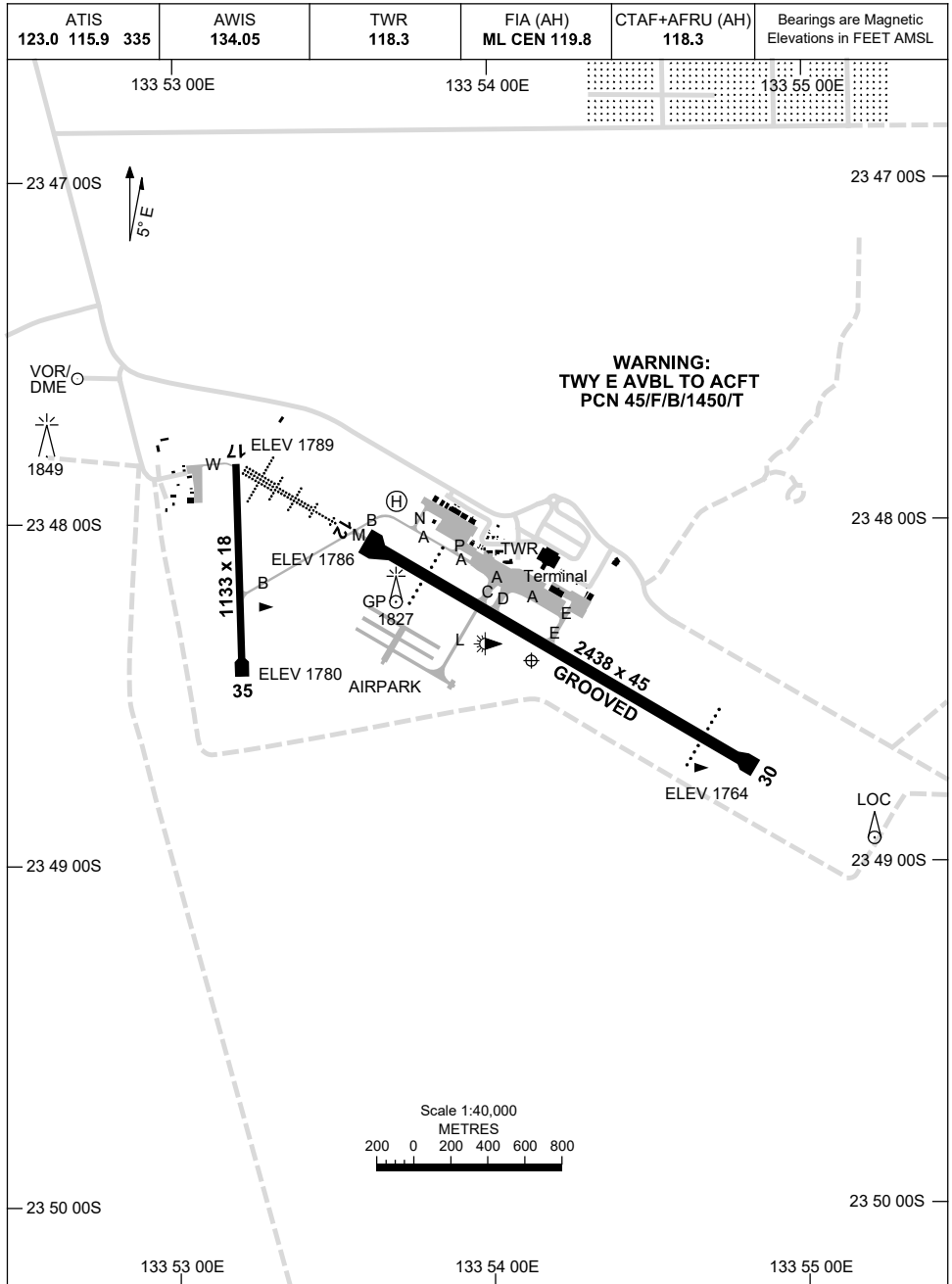


24 MAR 2022

AD ELEV 1789
23 48 30S 133 54 03E

AERODROME CHART - Page 1
ALICE SPRINGS, NT (YBAS)



Changes: ABN DELETED.

BASAD01-170

1 DEC 2022

AD ELEV 1789
23 48 30S 133 54 03E

AERODROME CHART - Page 2
ALICE SPRINGS, NT (YBAS)

| | | | | | |
|---|--|--------------|--------------------------|-------------------------|--|
| ATIS 123.0 115.9 335 | AWIS 134.05 | TWR 118.3 | FIA (AH) ML CEN 119.8 | CTAF+AFRU (AH) 118.3 | Bearings are Magnetic Elevations in FEET AMSL |
| | | | | | |
| RWY | AERODROME LIGHTING | | | | |
| | TAXIWAY : SOLAR TWY B, M. BLUE REFLECTIVE EDGE TWY A, B (BTN M AND RPT APRON), RL : MAN , SDBY (15 SEC) | | | | |
| 12 ¹¹⁶ 296 30 | PAPI 3.0° 49FT MIRL HIRL HIAL-CAT I PTBL PAPI 3.0° 49FT MIRL PTBL | | | | |
| 17 ¹⁷⁴ 354 35 | PTBL PTBL | | | | |

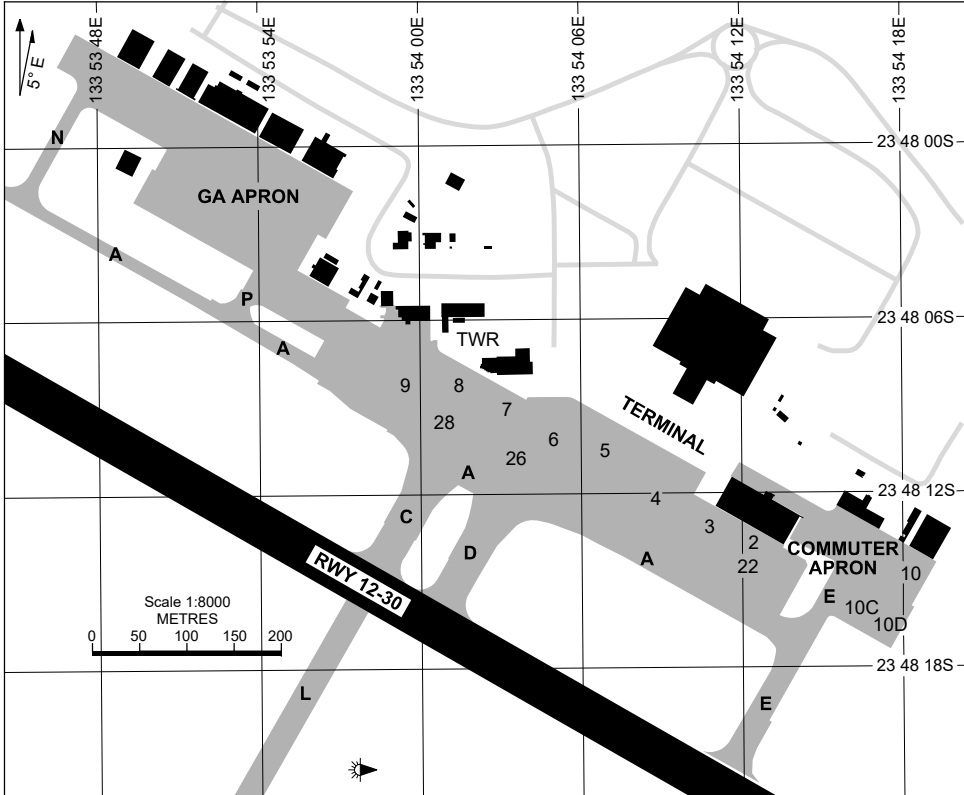
NOTES

1. RWY 17/35 PTBL - SOLAR LIGHTING FOR HN AND EMERG OPR ONLY.

Changes: NOTE 1 DELETED.

BASAD02-173

23 MAR 2023



PARKING POSITION INFORMATION

| STAND | CO-ORDINATES | | ELEV (ft) | CAPACITY | HYDRANT FUEL | DOCKING SYSTEM |
|-------|--------------|---------------|-----------|----------------------|--------------|----------------|
| 2 | 23 48 14.06S | 133 54 12.59E | 1778 | B738/A320 | NIL | MARSHALLED |
| 3 | 23 48 13.03S | 133 54 10.66E | 1777 | B738/A320 | NIL | MARSHALLED |
| 4 | 23 48 12.00S | 133 54 08.74E | 1777 | B738/A320 | NIL | MARSHALLED |
| 5 | 23 48 10.96S | 133 54 06.82E | 1777 | B738/A320 | NIL | MARSHALLED |
| 6 | 23 48 09.93S | 133 54 04.90E | 1780 | B738/A320 | NIL | MARSHALLED |
| 7 | 23 48 08.90S | 133 54 02.97E | 1781 | B738/A320 | NIL | MARSHALLED |
| 8 | 23 48 08.05S | 133 54 01.40E | 1781 | B712/E190 | NIL | MARSHALLED |
| 9 | 23 48 08.04S | 133 53 59.12E | 1781 | B772/B763 | NIL | MARSHALLED |
| 10 | 23 48 14.66S | 133 54 17.89E | 1776 | D8-300 | NIL | MARSHALLED |
| 10C | 23 48 15.73S | 133 54 16.55E | 1774 | WINGSPAN 17.5 metres | NIL | PILOT |
| 10D | 23 48 16.26S | 133 54 17.56E | 1774 | WINGSPAN 17.5 metres | NIL | PILOT |
| 22 | 23 48 14.37S | 133 54 12.24E | 1777 | B738/A320 | NIL | MARSHALLED |
| 26 | 23 48 10.48S | 133 54 03.35E | 1779 | A380/B744 | NIL | MARSHALLED |
| 28 | 23 48 09.26S | 133 54 01.08E | 1780 | A380/B744 | NIL | MARSHALLED |

NOTE: SOME SECONDARY BAYS OBSTRUCT PRIMARY BAYS.

DME or GNSS ARRIVAL PROCEDURES ALICE SPRINGS, NT (YBAS)

28 FEB 2019

| | | | | | |
|-------------------------|----------------|--------------|--------------------------|-------------------------|--|
| ATIS 123.0 115.9 335 | AWIS 134.05 | TWR 118.3 | FIA (AH) ML CEN 119.8 | CTAF+AFRU (AH) 118.3 | Bearings are Magnetic Elevations in FEET AMSL |
|-------------------------|----------------|--------------|--------------------------|-------------------------|--|

25 NM MSA
5200
AS VOR or NDB

**DME USING AS DME
REFERENCE WAYPOINT AS VOR**

* NO CIRCLING
BEYOND 3NM

AS :
NDB 335

AS :
VOR/DME 115.9

* NO CIRCLING N OF RWY 12/30 BEYOND 3NM.

AD ELEV 1789

SECTOR A

AS VOR or NDB

VOR or NDB

MISSED APPROACH:
TRACK 210° AS VOR OR NDB, CLIMB TO 5200FT.

| | | | | | | | | | | | | | | | | | | |
|------------------------|---------------|------|------|-------------|------|-------------|--|--|--|--|--|--|--|--|--|--|--|--|
| NM TO AS VOR | 25 | 17 | 15 | 8 | 5 | 0 | | | | | | | | | | | | |
| CIRCLING MINIMA | A,B: 3800-2.4 | | | C: 3800-4.0 | | D: 3800-5.0 | | | | | | | | | | | | |
| NM TO AS VOR | 7.1 | 6 | 5 | 4 | 3 | 2.7 | | | | | | | | | | | | |
| ALT (3° APCH PATH) | 5200 | 4860 | 4550 | 4230 | 3910 | 3800 | | | | | | | | | | | | |

SECTOR B

AS VOR or NDB

VOR or NDB

MISSED APPROACH:
TRACK 310° AS VOR OR NDB, CLIMB TO 5200FT.

| | | | | | | | | | | | | | | | | | | |
|------------------------|---------------|------|------|-------------|------|-------------|------|------|------|------|--|--|--|--|--|--|--|--|
| NM TO AS VOR | 25 | 17 | 12 | 7 | 5 | 0 | | | | | | | | | | | | |
| CIRCLING MINIMA | A,B: 2870-2.4 | | | C: 3300-4.0 | | D: 3400-5.0 | | | | | | | | | | | | |
| NM TO AS VOR | 8.8 | 8 | 7 | 6 | 5 | 4 | 3.1 | 2.8 | 2 | 1.4 | | | | | | | | |
| ALT (3° APCH PATH) | 5200 | 4960 | 4640 | 4320 | 4000 | 3680 | 3400 | 3300 | 3040 | 2870 | | | | | | | | |

SECTOR C

AS VOR or NDB

VOR or NDB

MISSED APPROACH:
TRACK 210° AS VOR OR NDB, CLIMB TO 5200FT.

| | | | | | | | | | | | | | | | | | | |
|------------------------|---------------|------|------|-------------|------|-------------|------|------|------|------|--|--|--|--|--|--|--|--|
| NM TO AS VOR | 25 | 17 | 15 | 12 | 5 | 0 | | | | | | | | | | | | |
| CIRCLING MINIMA | A,B: 3160-2.4 | | | C: 3300-4.0 | | D: 3400-5.0 | | | | | | | | | | | | |
| NM TO AS VOR | 8.8 | 8 | 7 | 6 | 5 | 4 | 3.1 | 3 | 2.8 | 2.4 | | | | | | | | |
| ALT (3° APCH PATH) | 5200 | 4960 | 4640 | 4320 | 4000 | 3680 | 3400 | 3360 | 3300 | 3160 | | | | | | | | |

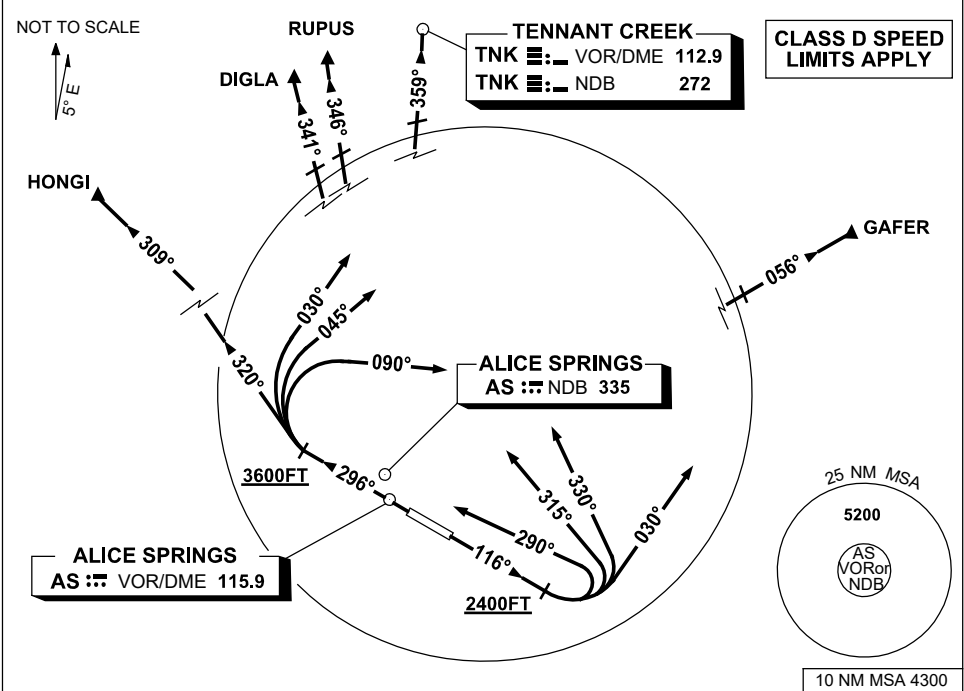
Changes: SECTOR B MNM, SECTOR C MNM, Editorial.

BASDG01-158

**STANDARD INSTRUMENT DEPARTURES (SID)
RWY 12/30 NORTH
ALICE SPRINGS, NT (YBAS)**

30 NOV 2023

| | | | | | |
|-------------------------|----------------|--------------|--------------------------|-------------------------|--|
| ATIS 123.0 115.9 335 | AWIS 134.05 | TWR 118.3 | FIA (AH) ML CEN 119.8 | CTAF+AFRU (AH) 118.3 | Bearings are Magnetic Elevations in FEET AMSL |
|-------------------------|----------------|--------------|--------------------------|-------------------------|--|



| | |
|--|--|
| <p>DIGLA RUPUS TENNANT CREEK (TNK) THREE DEPARTURE</p> <p>ALICE SPRINGS ONE DEPARTURE</p> <p>RWY 30 GRAD 3.8% TO 3600ft THENCE 3.3%</p> <ul style="list-style-type: none"> Track 296° At or ABV 3600ft but not before abeam AS VOR or AS NDB turn RIGHT <p>For HONGI</p> <ul style="list-style-type: none"> Track 320° Intercept cleared route <p>For DIGLA and RUPUS</p> <ul style="list-style-type: none"> Track 030° Intercept cleared route <p>For TNK</p> <ul style="list-style-type: none"> Track 045° Intercept cleared route <p>For GAFER</p> <ul style="list-style-type: none"> Track 090° Intercept cleared route | <p>GAFER THREE DEPARTURE HONGI THREE DEPARTURE</p> <p>RWY 12 GRAD 3.3%</p> <ul style="list-style-type: none"> Track 116° At or ABV 2400ft turn LEFT <p>For HONGI</p> <ul style="list-style-type: none"> Track 290° Intercept cleared route <p>For DIGLA and RUPUS</p> <ul style="list-style-type: none"> Track 315° Intercept cleared route <p>For TNK</p> <ul style="list-style-type: none"> Track 330° Intercept cleared route <p>For GAFER</p> <ul style="list-style-type: none"> Track 030° Intercept cleared route |
|--|--|

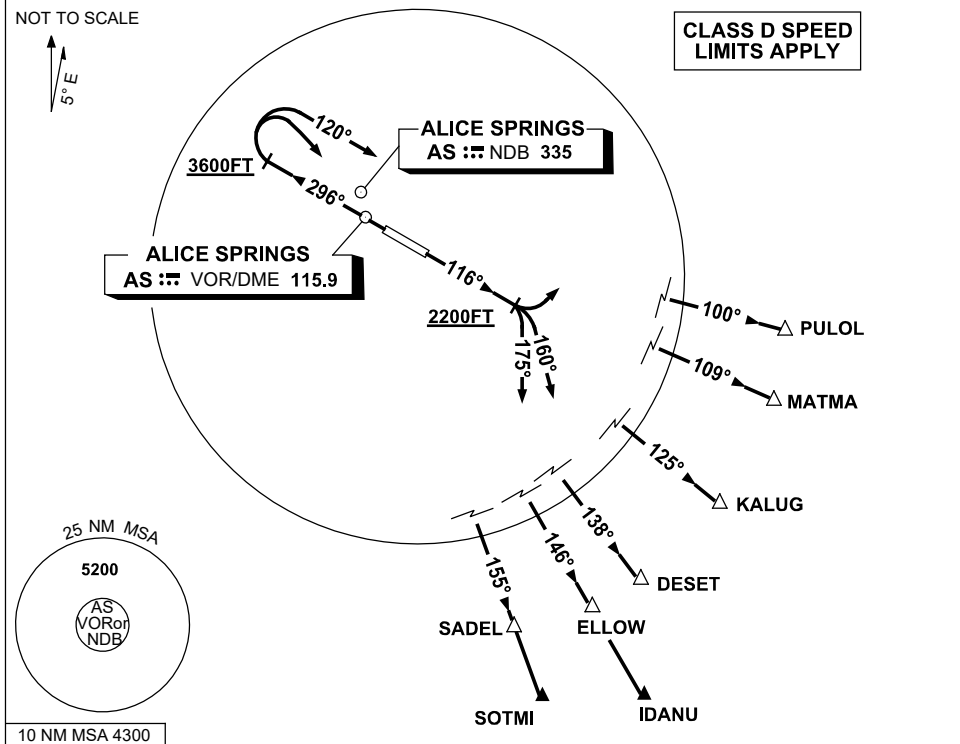
Changes: RUPUS REPLACES SCOTI, Editorial.

BASDP01-177

**STANDARD INSTRUMENT DEPARTURES (SID)
RWY 12/30 SOUTH EAST
ALICE SPRINGS, NT (YBAS)**

30 NOV 2023

| | | | | | |
|-------------------------|----------------|--------------|--------------------------|-------------------------|--|
| ATIS 123.0 115.9 335 | AWIS 134.05 | TWR 118.3 | FIA (AH) ML CEN 119.8 | CTAF+AFRU (AH) 118.3 | Bearings are Magnetic Elevations in FEET AMSL |
|-------------------------|----------------|--------------|--------------------------|-------------------------|--|



**PULOL THREE DEPARTURE
MATMA ONE DEPARTURE
KALUG THREE DEPARTURE
SADEL FOUR DEPARTURE**

RWY 30

- GRAD 3.8% TO 3600ft THENCE 3.3%
- Track 296°
- At or ABV 3600ft but not before abeam AS VOR or NDB turn RIGHT

For PULOL and MATMA

- Track 120°
- Intercept cleared route

For KALUG, DESET, IDANU, ELLOW, SADEL and SOTMI

- Track DCT to AS VOR or AS NDB
- Overhead AS VOR or AS NDB
- Intercept cleared route

**IDANU THREE DEPARTURE
DESET FOUR DEPARTURE
ELLOW THREE DEPARTURE
SOTMI ONE DEPARTURE**

RWY 12

- GRAD 3.3%
- Track 116°
- At or ABV 2200ft

For PULOL and MATMA

- Turn LEFT
- Intercept cleared route

For KALUG, DESET and IDANU

- Turn RIGHT
- Track 160°
- Intercept cleared route

For ELLOW, SADEL and SOTMI

- Turn RIGHT
- Track 175°
- Intercept cleared route

Changes: SOTMI REPLACES SARAH, MATMA REPLACES STEEL, Editorial.

BASDP02-177

STANDARD INSTRUMENT DEPARTURES (SID)
RWY 12/30 WEST (RNAV)
ALICE SPRINGS, NT (YBAS)

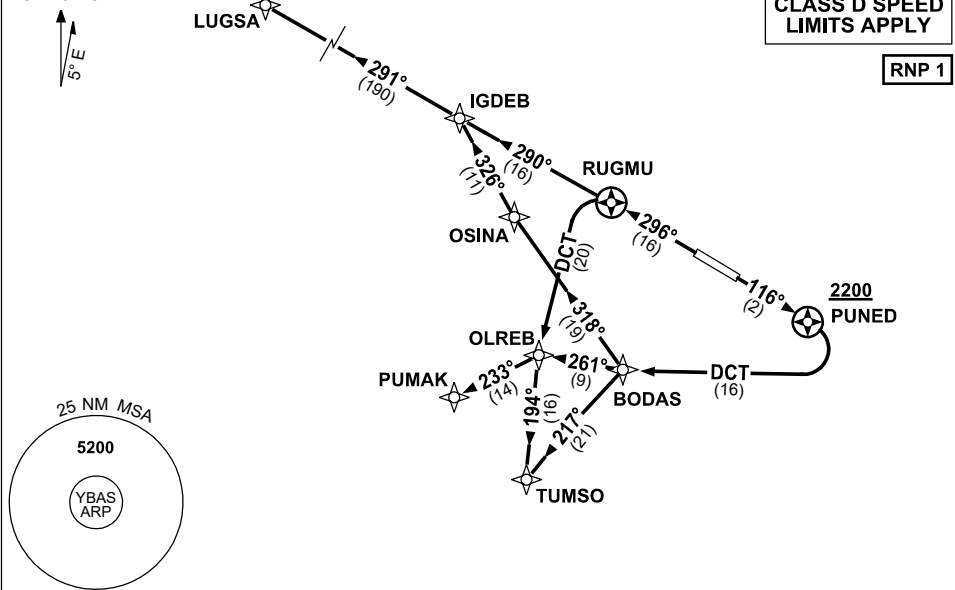
30 NOV 2023

| | | | | | |
|-------------------------|----------------|--------------|--------------------------|-------------------------|--|
| ATIS 123.0 115.9 335 | AWIS 134.05 | TWR 118.3 | FIA (AH) ML CEN 119.8 | CTAF+AFRU (AH) 118.3 | Bearings are Magnetic Elevations in FEET AMSL |
|-------------------------|----------------|--------------|--------------------------|-------------------------|--|

NOT TO SCALE

**CLASS D SPEED
LIMITS APPLY**

RNP 1



10 NM MSA 4300

TUMSO ONE DEPARTURE
PUMAK ONE DEPARTURE
LUGSA ONE DEPARTURE

RWY 30

GRAD 3.9% TO 3300ft thence 3.3%

- Track 296° to RUGMU

FROM RUGMU

For LUGSA

- Track 290° to IGDEB
- Track 291° to LUGSA, thence as cleared

For PUMAK

- Turn LEFT, track DCT to OLREB
- Turn RIGHT, track 233° to PUMAK, thence as cleared

For TUMSO

- Turn LEFT, track DCT to OLREB,
- Track 194° to TUMSO, thence as cleared

RWY 12

GRAD 3.3%

- Track 116° to PUNED

Cross PUNED AT or ABV 2200FT

- Turn RIGHT, track DCT to BODAS

FROM BODAS

For TUMSO

- Turn LEFT, track 217° to TUMSO thence as cleared

For PUMAK

- Track 261° to OLREB
- Turn LEFT, track 233° to PUMAK, thence as cleared

For LUGSA

- Turn RIGHT, track 318° to OSINA
- Turn RIGHT, track 326° to IGDEB,
- Turn LEFT, track 291° to LUGSA, thence as cleared

Changes: LUGSA REPLACES LEESA, Editorial.

BASDP03-177

FOR CASA APPROVED OPERATORS ONLY

USE QNH

MUDMO ONE DEPARTURE

ALICE SPRINGS, NT (YBAS)

21 MAR 2024

| | | | | | | |
|--|----------------------------|--|-----------------------|---------------------|---------------------------------|----------------------------------|
| Apt Elev 1789' | Trans ALT 10000' | ATIS 123.0 115.9 335 | AWIS 134.05 | TWR 118.3 | FIA (AH) ML CEN 119.8 | CTAF + AFRU (AH) 118.3 |
| MUDMO ONE RNAV (RNP) DEPARTURE RNP 0.30 (MUDMO1.MUDMO) RWY 12 | | Minimum climb gradient (All Engines) 5.4% to 2800FT. | | | | |

TAKE-OFF:

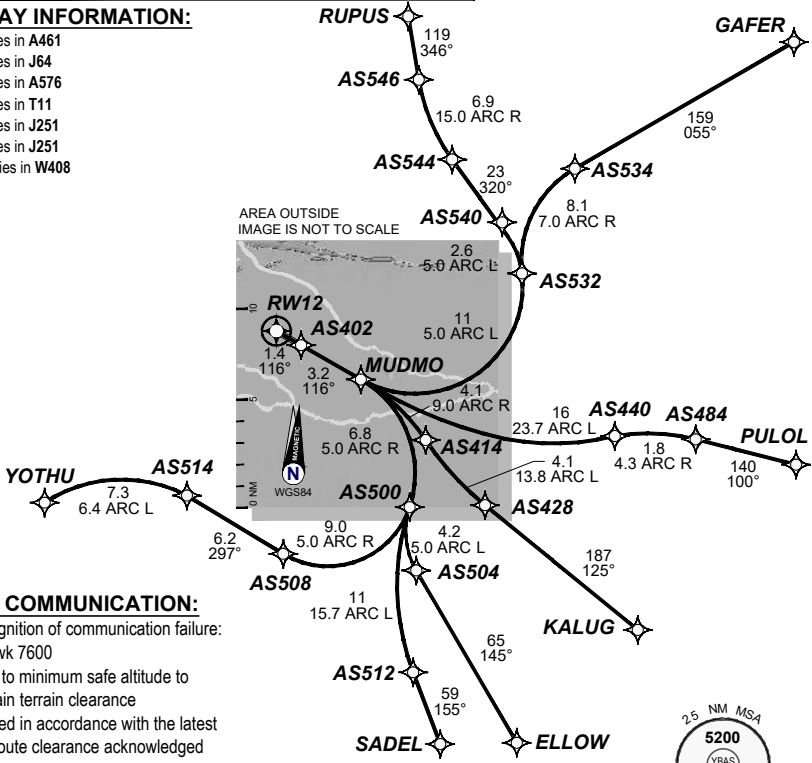
RWY 12: Fly the RNAV (RNP) track to MUDMO. Thence:

TRANSITIONS:

- (MUDMO1.ELLOW): Fly the RNAV (RNP) track to ELLOW.
- (MUDMO1.GAFER): Fly the RNAV (RNP) track to GAFER.
- (MUDMO1.KALUG): Fly the RNAV (RNP) track to KALUG.
- (MUDMO1.PULOL): Fly the RNAV (RNP) track to PULOL.
- (MUDMO1.SADEL): Fly the RNAV (RNP) track to SADEL.
- (MUDMO1.RUPUS): Fly the RNAV (RNP) track to RUPUS.
- (MUDMO1.YOTHU): Fly the RNAV (RNP) track to YOTHU.

AIRWAY INFORMATION:

- AS504 lies in A461
- AS534 lies in J64
- AS428 lies in A576
- AS484 lies in T11
- AS512 lies in J251
- AS546 lies in J251
- YOTHU lies in W408



LOST COMMUNICATION:

On recognition of communication failure:

- Squawk 7600
- Climb to minimum safe altitude to maintain terrain clearance
- Proceed in accordance with the latest ATC route clearance acknowledged

202310241855COPYRIGHT 2023 GE, USA, GE PROPRIETARY INFORMATION

10 NM MSA 4300

Changes: from SUP H81/23

BASDP04-178

DO NOT USE FOR NAVIGATION

Prepared by GE Aviation



**FOR CASA APPROVED OPERATORS ONLY
USE QNH**

OCTAV SIX DEPARTURE

ALICE SPRINGS, NT (YBAS)

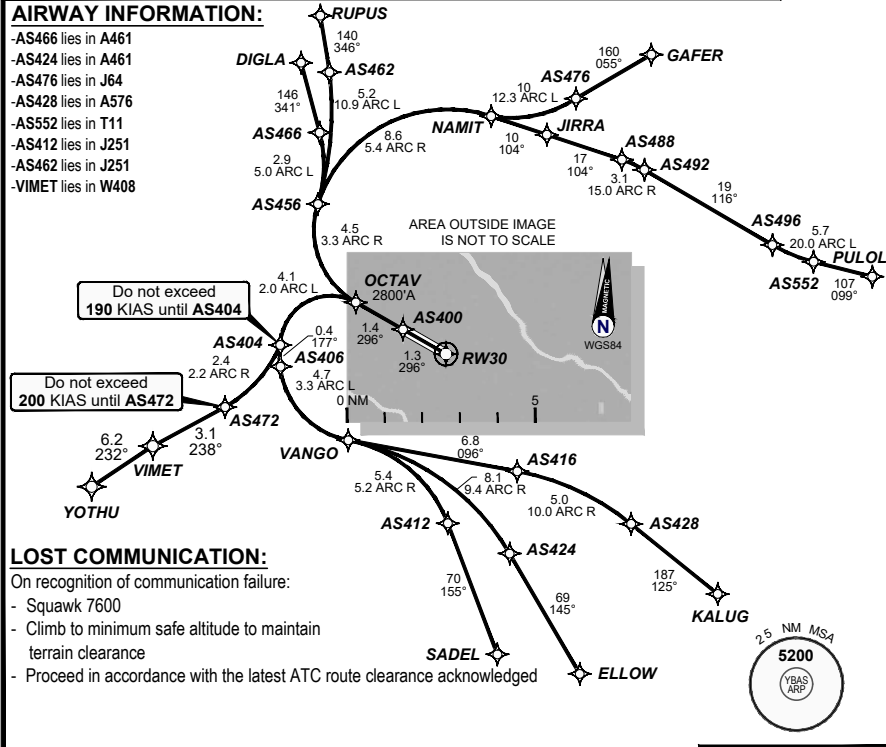
21 MAR 2024

| Apt Elev | Trans ALT | ATIS | AWIS | TWR | FIA (AH) | CTAF + AFRU (AH) |
|----------|-----------|-----------------|--------|-------|--------------|------------------|
| 1789' | 10000' | 123.0 115.9 335 | 134.05 | 118.3 | ML CEN 119.8 | 118.3 |

| | |
|---|---|
| OCTAV SIX RNAV (RNP) DEPARTURE RNP 0.30 (OCTAV6.OCTAV) RWY 30 | Minimum climb gradient (All Engines) 11.6% to 2800FT. |
| | |

TAKE-OFF:
 RWY 30: Fly the RNAV (RNP) track to **OCTAV** and cross **OCTAV** at or above **2800'**. Thence:

TRANSITIONS:
 (OCTAV6.DIGLA): Fly the RNAV (RNP) track to **DIGLA**.
 (OCTAV6.ELLOW): Fly the RNAV (RNP) track to **ELLOW**. Do not exceed **190 KIAS** until **AS404**.
 (OCTAV6.GAFER): Fly the RNAV (RNP) track to **GAFER**.
 (OCTAV6.KALUG): Fly the RNAV (RNP) track to **KALUG**. Do not exceed **190 KIAS** until **AS404**.
 (OCTAV6.PULOL): Fly the RNAV (RNP) track to **PULOL**.
 (OCTAV6.SADEL): Fly the RNAV (RNP) track to **SADEL**. Do not exceed **190 KIAS** until **AS404**.
 (OCTAV6.RUPUS): Fly the RNAV (RNP) track to **RUPUS**.
 (OCTAV6.YOTHU): Fly the RNAV (RNP) track to **YOTHU**. Do not exceed **190 KIAS** until **AS404**.
 Do not exceed **200 KIAS** until **AS472**.



LOST COMMUNICATION:
 On recognition of communication failure:
 - Squawk 7600
 - Climb to minimum safe altitude to maintain terrain clearance
 - Proceed in accordance with the latest ATC route clearance acknowledged

DO NOT USE FOR NAVIGATION

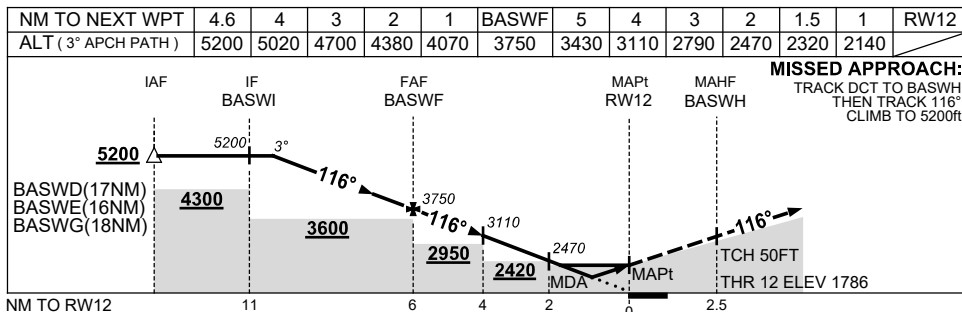
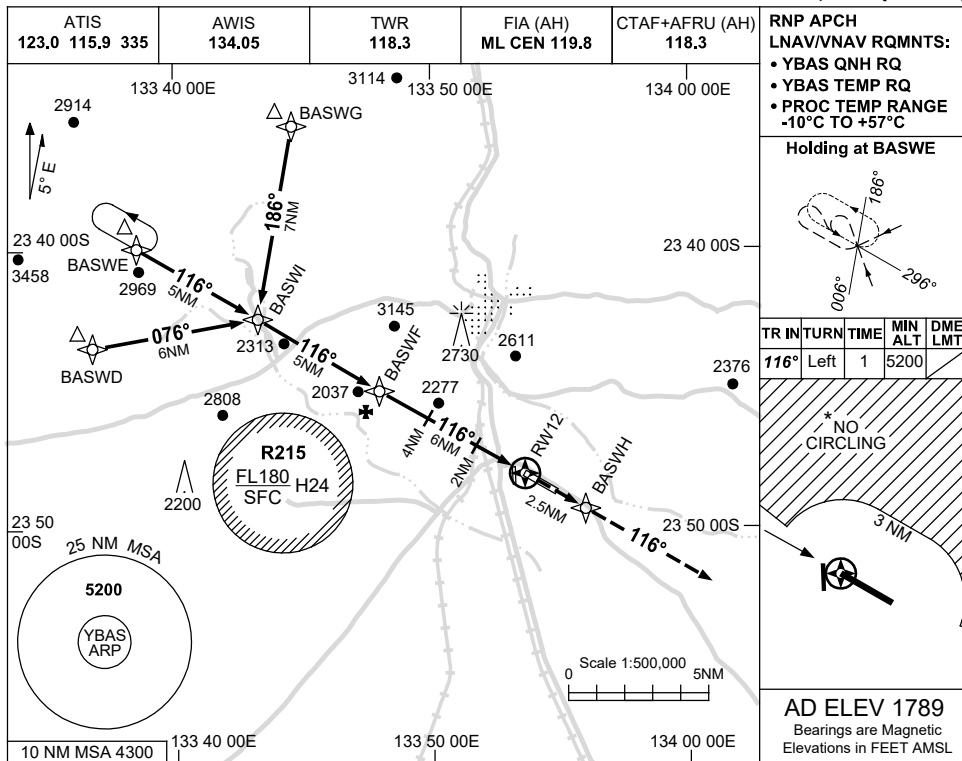


USE QNH

RNP Z RWY 12

ALICE SPRINGS, NT (YBAS)

13 JUN 2024



NOTES

| CATEGORY | A | B | C | D |
|------------|----------------|----------------|-----------------|-----------------|
| LNAV/VNAV | | 2140 (354-1.1) | | |
| LNAV | | 2320 (531-2.1) | | |
| CIRCLING * | 2570 (781-2.4) | | 2990 (1201-4.0) | 2990 (1201-5.0) |
| ALTERNATE | (1281-4.4) | | (1701-6.0) | (1701-7.0) |

* 1. NO CIRCLING NORTH OF RWY 12/30 BEYOND 3NM.
2. CTA CONTAINMENT NOT ASSURED WHEN HOLDING AT OR BLW 6500FT.

Changes: NOTE 2.

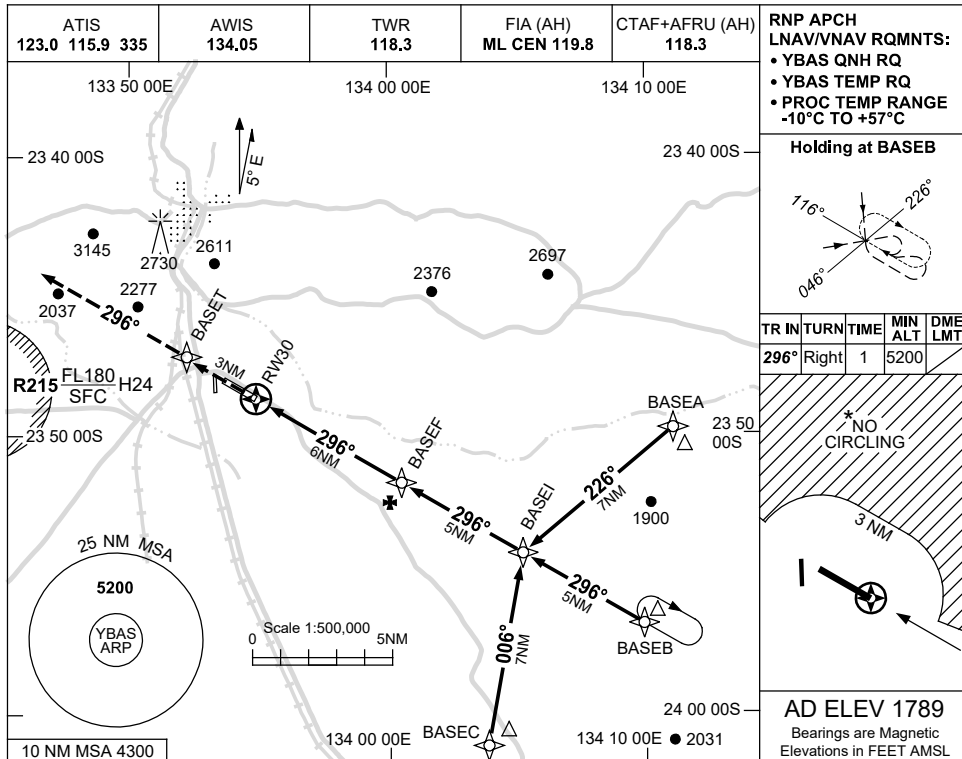
BASGN01-179

USE QNH

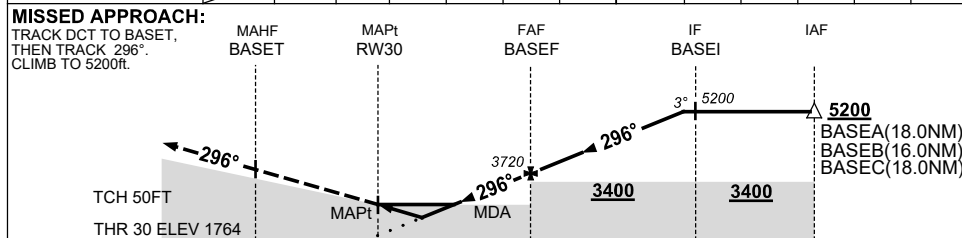
RNP Z RWY 30

ALICE SPRINGS, NT (YBAS)

13 JUN 2024



| NM TO NEXT WPT | RW30 | 0.9 | 1.4 | 2 | 3 | 4 | 5 | BASEF | 1 | 2 | 3 | 4 | 4.6 |
|--------------------|------|------|------|------|------|------|------|-------|------|------|------|------|------|
| ALT (3° APCH PATH) | | 2090 | 2260 | 2450 | 2770 | 3090 | 3410 | 3720 | 4040 | 4360 | 4680 | 5000 | 5200 |



NOTES

| CATEGORY | A | B | C | D |
|------------|----------------|-----------------|-----------------|---|
| LNAV/VNAV | | 2090 (326-1.8) | | |
| LNAV | | 2260 (496-2.8) | | |
| CIRCLING * | 2570 (781-2.4) | 2990 (1201-4.0) | 2990 (1201-5.0) | |
| ALTERNATE | (1281-4.4) | (1701-6.0) | (1701-7.0) | |

* 1. NO CIRCLING NORTH OF RWY 12/30 BEYOND 3NM.
* 2. CTA CONTAINMENT NOT ASSURED WHEN HOLDING AT OR BLW 6500FT.

Changes: NOTE 2.

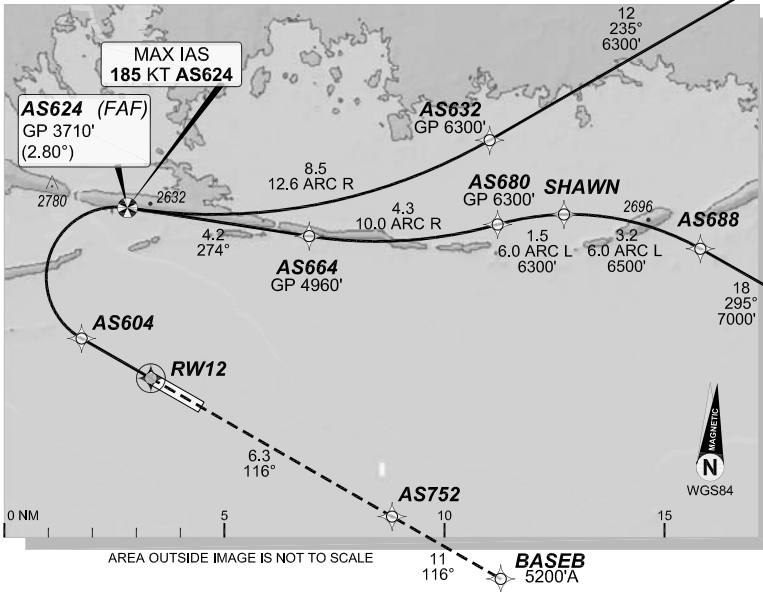
BASGN02-179

1 DEC 2022

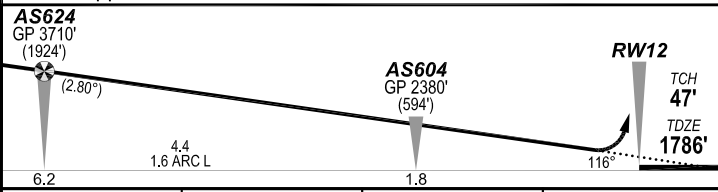
ALICE SPRINGS, NT (YBAS)

GE PROPRIETARY INFORMATION

| | | | | | | | |
|--------------------------------|--|---|--|--|-----------------------------|---------------------------------|----------------------------------|
| ATIS 123.0 115.9 335 | | | AWIS 134.05 | | TWR 118.3 | FIA (AH) ML CEN 119.8 | CTAF + AFRU (AH) 118.3 |
| RNP AR RNV M 12 | | Apt Elev. 1789' TDZE 1786' | AS624 (FAF) GP 3710' (2.80°) | | Trans Level FL110 | | |



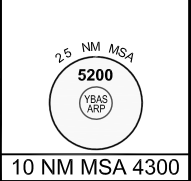
MISSED APPROACH:
Climb to **5200'** via the RNP AR
Missed Approach track to **BASEB**.



NOTES:

- YBAS ACT QNH RQ.
- Minimum MAP gradient (All Engines) 3.0% to 5200FT.
- APCH Path does not coincide with PAPI glide path 3°.

| | | | | | |
|---|---|-----------------------------|---|--------------------------------|--------|
| AS624 GP 3710' (1924') (2.80°) | | AS604 GP 2380' (594') | | RWY12 TCH 47' TDZE 1786' | |
| 6.2 | | 4.4 1.6 ARC L | | 1.8 | |
| | | | | RNP 0.30 | |
| | | | | DA(H) 2104' (318') | |
| | | | | HIALS OUT | |
| C | C | C | C | 800 m | 1700 m |



FOR CASA APPROVED OPERATORS ONLY

Changes: PROC NAME, SPEED NOTE AS624, RNAV (RNP) TO RNP AR.

DO NOT USE FOR NAVIGATION

Prepared by GE Aviation



202208021123COPYRIGHT 2022 NAVERUS, INC. USA

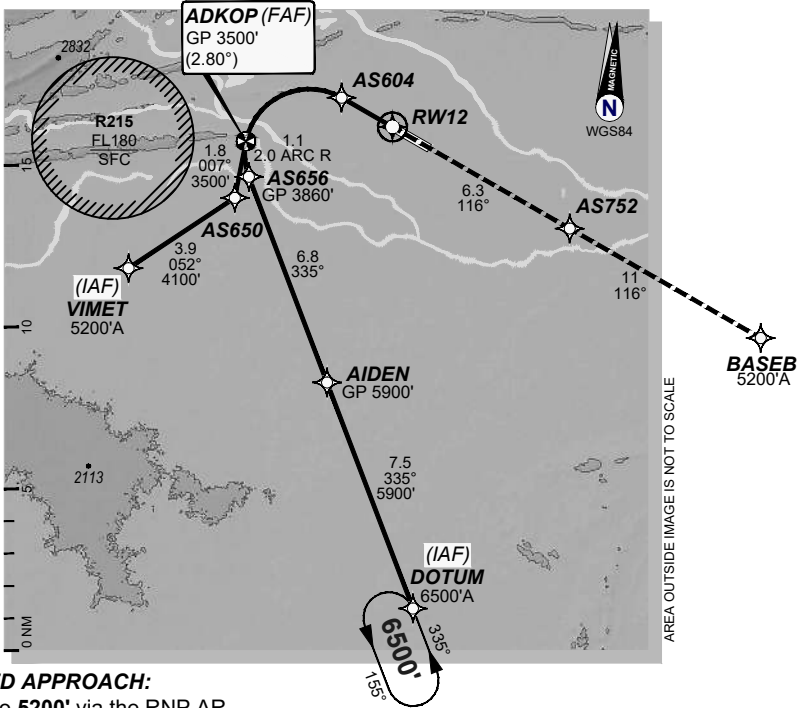
USE QNH

RNP P RWY 12 (AR)

21 MAR 2024

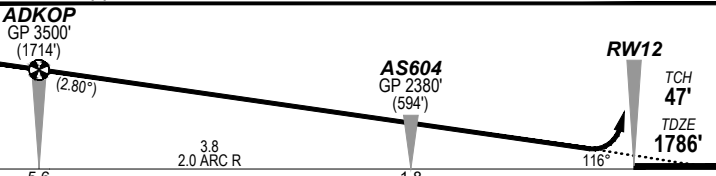
ALICE SPRINGS, NT (YBAS)

| | | | | |
|--------------------|-------------------------------|---------------------------------|----------------------|------------------|
| ATIS | AWIS | TWR | FIA (AH) | CTAF + AFRR (AH) |
| 123.0 115.9 335 | 134.05 | 118.3 | ML CEN 119.8 | 118.3 |
| RNP AR RNP P 12 | Apt Elev. 1789' TDZE 1786' | ADKOP (FAF) GP 3500' (2.80°) | Trans Level FL110 | |



MISSED APPROACH:

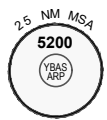
Climb to **5200'** via the RNP AR
Missed Approach track to **BASEB**.



NOTES:

- YBAS ACT QNH RQ.
- Minimum MAP gradient (All Engines) 3.0% to 5200FT.
- APCH Path does not coincide with PAPI glide path 3°.

| | | | | | |
|---|--|-----------------------------|--------------------|--------------------------------|--|
| ADKOP GP 3500' (1714') (2.80°) | | AS604 GP 2380' (594') | | RWY12 TCH 47' TDZE 1786' | |
| 5.6 | | 3.8 2.0 ARC R | | 1.8 | |
| RNP 0.30 | | | DA(H) 2104' (318') | | |
| C | | | HIALS OUT | | |
| C | | C | | C | |
| 800 m | | 1700 m | | | |
| 10 NM MSA 4300 | | | | | |



FOR CASA APPROVED OPERATORS ONLY

202310241957COPYRIGHT 2023 GE Digital USA, GE PROPRIETARY INFORMATION

Changes: from SUP H81/23

DO NOT USE FOR NAVIGATION

BASGN04-178



USE QNH

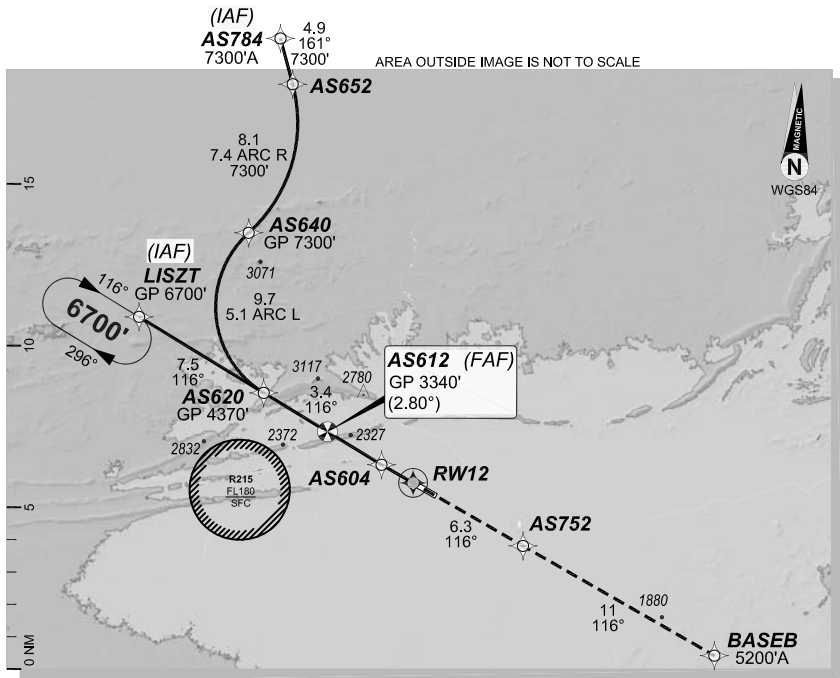
RNP U RWY 12 (AR)

ALICE SPRINGS, NT (YBAS)

1 DEC 2022

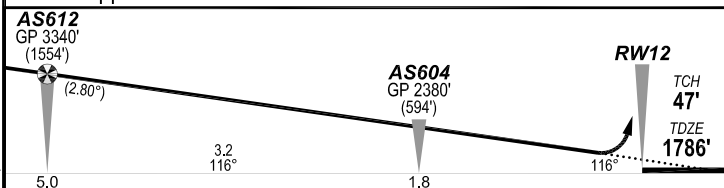
GE PROPRIETARY INFORMATION

| | | | | | | | |
|--------------------------------|--|---|--|--|-----------------------------|---------------------------------|----------------------------------|
| ATIS 123.0 115.9 335 | | | AWIS 134.05 | | TWR 118.3 | FIA (AH) ML CEN 119.8 | CTAF + AFRU (AH) 118.3 |
| RNP AR RNV U 12 | | Apt Elev. 1789' TDZE 1786' | AS612 (FAF) GP 3340' (2.80°) | | Trans Level FL110 | | |



MISSED APPROACH:

Climb to **5200'** via the RNP AR
Missed Approach track to **BASEB**.



NOTES:

- YBAS ACT QNH RQ.
- Minimum MAP gradient (All Engines) 3.0% to 5200FT.
- APCH Path does not coincide with PAPI glide path 3°.

| | | | |
|---|---|---------------------------|-----------------------|
| | | RNP 0.30 | |
| | | DA(H) 2104' (318') | |
| | | HIALS OUT | |
| C | C | C | C 800 m 1700 m |



10 NM MSA 4300

FOR CASA APPROVED OPERATORS ONLY

Changes: PROC NAME, RNAV (RNP) TO RNP AR.

BASGN05-173

DO NOT USE FOR NAVIGATION

Prepared by GE Aviation



202208021125COPYRIGHT 2022 NAVERUS, INC. USA

USE QNH

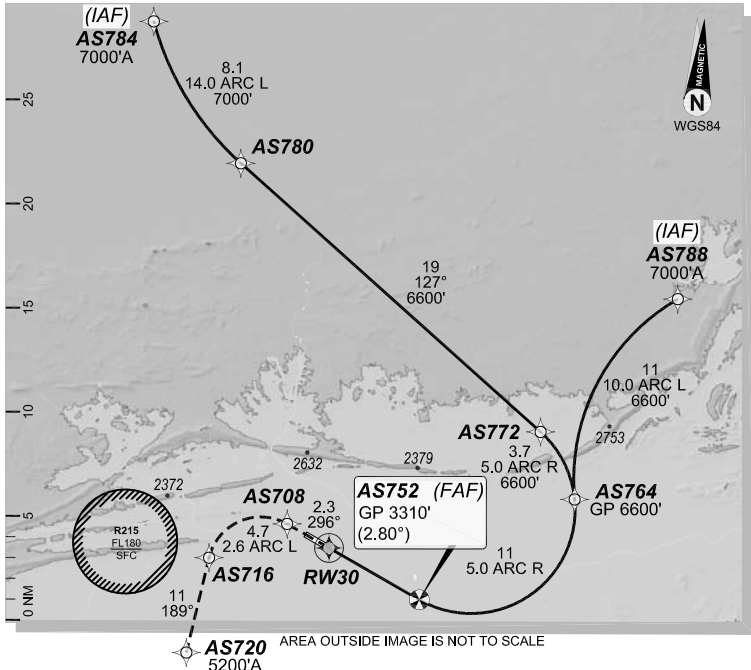
RNP M RWY 30 (AR)

1 DEC 2022

ALICE SPRINGS, NT (YBAS)

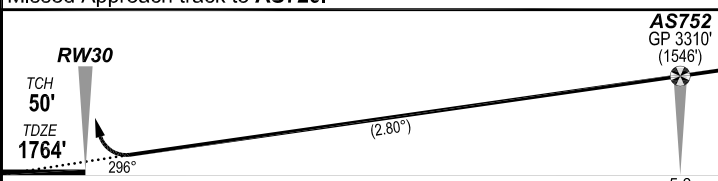
GE PROPRIETARY INFORMATION

| | | | | | | | |
|--------------------------------|--|---|--|--|-----------------------------|---------------------------------|----------------------------------|
| ATIS 123.0 115.9 335 | | | AWIS 134.05 | | TWR 118.3 | FIA (AH) ML CEN 119.8 | CTAF + AFRU (AH) 118.3 |
| RNP AR RNV M 30 | | Apt Elev. 1789' TDZE 1764' | AS752 (FAF) GP 3310' (2.80°) | | Trans Level FL110 | | |



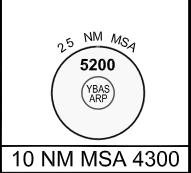
MISSED APPROACH:

Climb to **5200'** via the RNP AR
Missed Approach track to **AS720**.



- NOTES:**
- YBAS ACT QNH RQ.
 - Minimum MAP gradient (All Engines) 3.0% to 5200FT.
 - APCH Path does not coincide with PAPI glide path 3°.

| | |
|-----------------|---------------------|
| RNP 0.30 | |
| DA(H) | 2067' (303') |
| C | 1600 m |



FOR CASA APPROVED OPERATORS ONLY

Changes: PROC NAME, RNAV (RNP) TO RNP AR.

DO NOT USE FOR NAVIGATION

Prepared by GE Aviation

BASGN06-173



202208021125COPYRIGHT 2022 MAVERUS, INC. USA

USE QNH

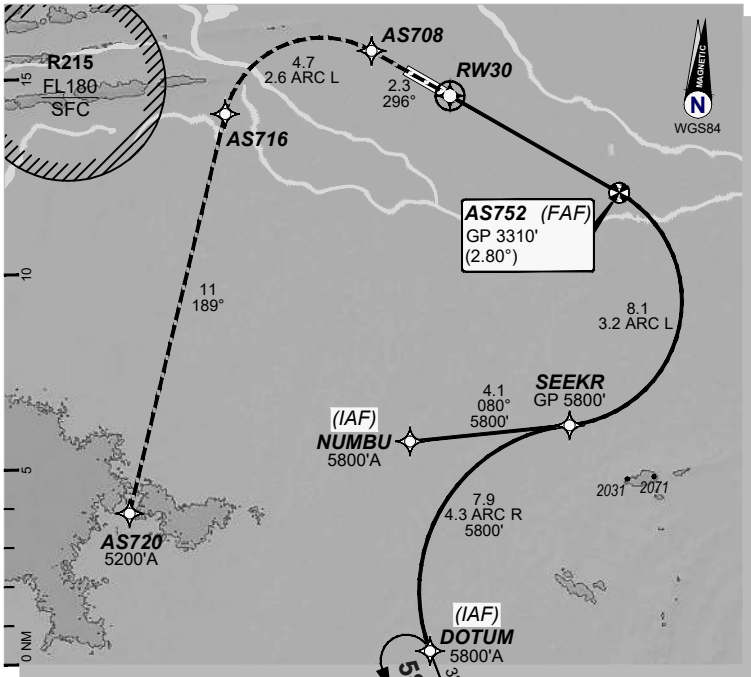
RNP P RWY 30 (AR)

21 MAR 2024

ALICE SPRINGS, NT (YBAS)

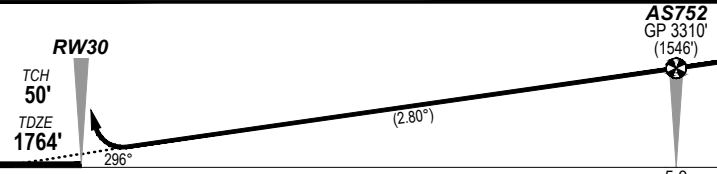
| | | | | |
|-----------------|--------|-------|--------------|------------------|
| ATIS | AWIS | TWR | FIA (AH) | CTAF + AFRU (AH) |
| 123.0 115.9 335 | 134.05 | 118.3 | ML CEN 119.8 | 118.3 |

| | | | |
|--------------------|-------------------------------|---------------------------------|----------------------|
| RNP AR RNP P 30 | Apt Elev. 1789' TDZE 1764' | AS752 (FAF) GP 3310' (2.80°) | Trans Level FL110 |
|--------------------|-------------------------------|---------------------------------|----------------------|



MISSED APPROACH:

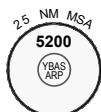
Climb to **5200'** via the RNP AR
Missed Approach track to **AS720**.



NOTES:

- YBAS ACT QNH RQ.
- Minimum MAP gradient (All Engines) 3.0% to 5200FT.
- APCH Path does not coincide with PAPI glide path 3°.

| | | | |
|---|---|---|--------------------|
| | | | RNP 0.30 |
| | | | DA(H) 2067' (303') |
| C | C | C | 1600 m |



10 NM MSA 4300

FOR CASA APPROVED OPERATORS ONLY

202310241959COPYRIGHT 2023 GE Digital USA, GE PROPRIETARY INFORMATION

Changes: from SUP H81/23

DO NOT USE FOR NAVIGATION

BASGN07-178

© Airservices Australia

Prepared by GE Aviation



USE QNH

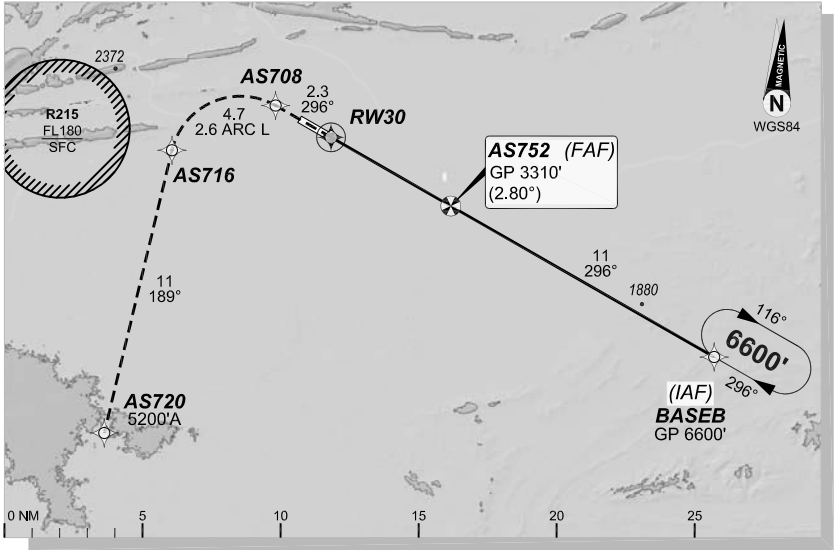
RNP U RWY 30 (AR)

1 DEC 2022

ALICE SPRINGS, NT (YBAS)

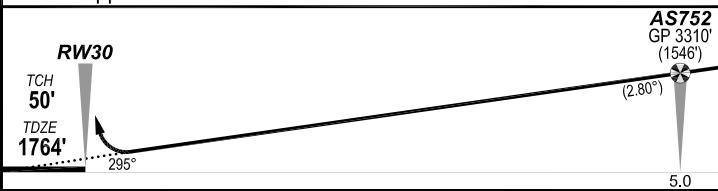
GE PROPRIETARY INFORMATION

| | | | | | | | |
|--------------------------------|--|---|-----------------------|--|---------------------|---------------------------------|----------------------------------|
| ATIS 123.0 115.9 335 | | | AWIS 134.05 | | TWR 118.3 | FIA (AH) ML CEN 119.8 | CTAF + AFRU (AH) 118.3 |
| RNP AR RNV U 30 | | Apt Elev. 1789' TDZE 1764' | | AS752 (FAF) GP 3310' (2.80°) | | Trans Level FL110 | |



MISSED APPROACH:

Climb to **5200'** via the RNP AR
Missed Approach track to **AS720**.



NOTES:

- YBAS ACT QNH RQ.
- Minimum MAP gradient (All Engines) 3.0% to 5200FT.
- APCH Path does not coincide with PAPI glide path 3°.

| | | | | | |
|---|---|---|---|---------------------------|--|
| | | | | RNP 0.30 | |
| | | | | DA(H) 2067' (303') | |
| C | C | C | C | 1600 m | |



10 NM MSA 4300

FOR CASA APPROVED OPERATORS ONLY

Changes: PROC NAME, RNAV (RNP) TO RNP AR.

BASGN08-173

DO NOT USE FOR NAVIGATION

Prepared by GE Aviation



202208021126COPYRIGHT. 2022 NAVERUS, INC. USA

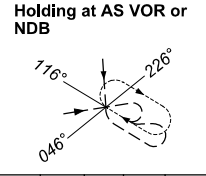
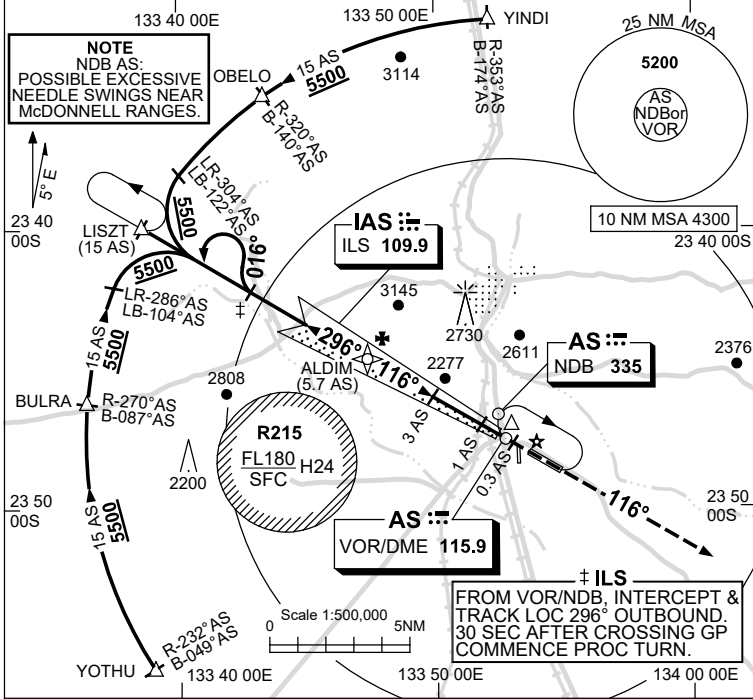
USE QNH

ILS-Y or LOC-Y RWY 12
ALICE SPRINGS, NT (YBAS)

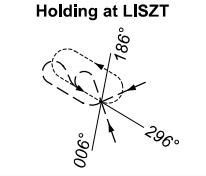
5 SEP 2024

| | | | | |
|-------------------------|----------------|--------------|--------------------------|-------------------------|
| ATIS 123.0 115.9 335 | AWIS 134.05 | TWR 118.3 | FIA (AH) ML CEN 119.8 | CTAF+AFRU (AH) 118.3 |
|-------------------------|----------------|--------------|--------------------------|-------------------------|

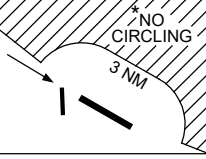
NAVAID RQ:
 • DME or GNSS



| TR | IN | TURN | TIME | MIN ALT | DME LMT |
|------|-------|------|------|---------|---------|
| 296° | Right | 1 | 5500 | | |

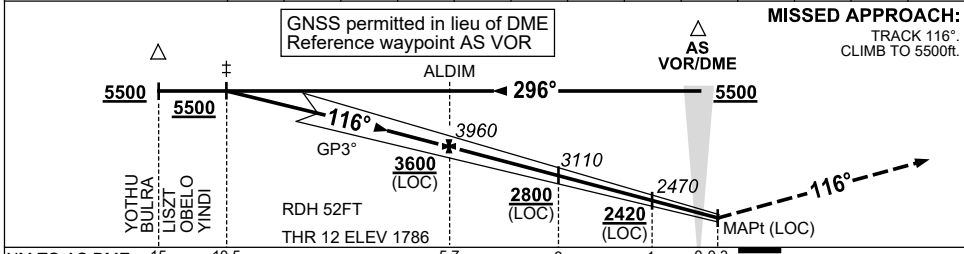


| TR | IN | TURN | TIME | MIN ALT | DME LMT |
|------|------|------|------|---------|---------|
| 116° | Left | 1 | 5500 | | |



AD ELEV 1789
 Bearings are Magnetic
 Elevations in FEET AMSL

| | | | | | | | | | | | | | |
|--------------------|------|------|------|------|------|------|------|------|------|------|------|------|------|
| NM TO AS DME | 10.5 | 10 | 9 | 8 | 7 | 6 | 5.7 | 5 | 4 | 3 | 2 | 1 | 0.5 |
| ALT (3° APCH PATH) | 5500 | 5330 | 5010 | 4690 | 4370 | 4060 | 3960 | 3740 | 3420 | 3110 | 2780 | 2470 | 2320 |



| | | | | | | |
|--------------|------|------|-----|---|-----|-----|
| NM TO AS DME | 15 | 10.5 | 5.7 | 3 | 1 | 0.3 |
| NM TO THR 12 | 11.5 | 6.7 | 4 | 2 | 1.0 | 0 |

- NOTES**
- MAX IAS:
HOLDING : 185KT.
HLDG NOT ABOVE FL120.
 - SPECIAL ALTN MNM 800/4.0KM.
 - NO CIRCLING N OF RWY 12 / 30 BEYOND 3NM.
 - CTA CONTAINMENT NOT ASSURED WHEN HOLDING AT LISZT AT OR BLW 6500ft.

| CATEGORY | A | B | C | D |
|------------|----------------|-----------------|-----------------|---|
| S-I ILS | | 2100 (314) 0.8 | | |
| S-I LOC | | 2320 (531-2.1) | | |
| CIRCLING* | 2570 (781-2.4) | 2990 (1201-4.0) | 2990 (1201-5.0) | |
| ALTERNATE* | (1281-4.4) | (1701-6.0) | (1701-7.0) | |

Changes: WPT NAMES.

BASII01-180

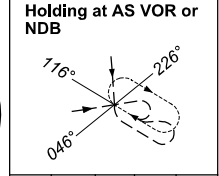
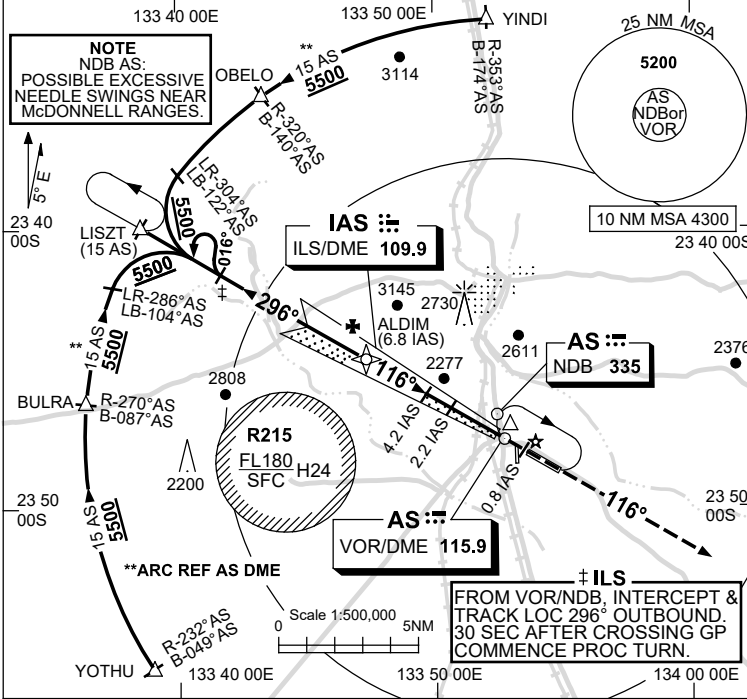
USE QNH

ILS-Z or LOC-Z RWY 12
ALICE SPRINGS, NT (YBAS)

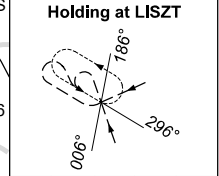
5 SEP 2024

| | | | | |
|-------------------------|----------------|--------------|--------------------------|-------------------------|
| ATIS 123.0 115.9 335 | AWIS 134.05 | TWR 118.3 | FIA (AH) ML CEN 119.8 | CTAF+AFRU (AH) 118.3 |
|-------------------------|----------------|--------------|--------------------------|-------------------------|

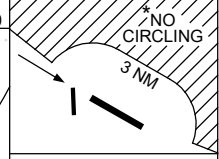
NAVAID RQ:
 • DME or GNSS (ILS)
 • DME (LOC ONLY)



| TR IN | TURN | TIME | MIN ALT | DME LMT |
|-------|-------|------|---------|---------|
| 296° | Right | 1 | 5500 | |

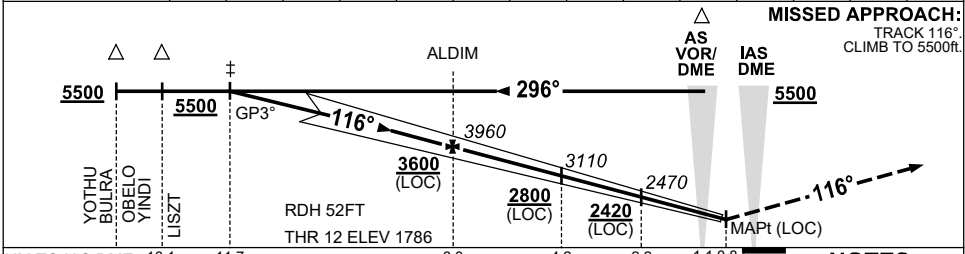


| TR IN | TURN | TIME | MIN ALT | DME LMT |
|-------|------|------|---------|---------|
| 116° | Left | 1 | 5500 | |



AD ELEV 1789
 Bearings are Magnetic
 Elevations in FEET AMSL

| | | | | | | | | | | | | | | |
|--------------------|------|------|------|------|------|------|------|------|------|------|------|------|------|------|
| NM TO IAS DME | 11.7 | 11 | 10 | 9 | 8 | 6.8 | 6 | 5 | 4.2 | 4 | 3 | 2.2 | 2 | 1.7 |
| ALT (3° APCH PATH) | 5500 | 5290 | 4970 | 4650 | 4330 | 3960 | 3690 | 3380 | 3110 | 3060 | 2740 | 2470 | 2420 | 2320 |



| | | | | | | | | | | | | | | |
|---------------|------|------|--|--|-----|--|-----|-----|-----|-----|--|--|--|--|
| NM TO IAS DME | 16.1 | 11.7 | | | 6.8 | | 4.2 | 2.2 | 1.1 | 0.8 | | | | |
| NM TO THR 12 | 16 | 11.5 | | | 6.7 | | 4 | 2 | 1 | 0.6 | | | | |

- NOTES**
- MAX IAS: HOLDING : 185KT. HLDG NOT ABOVE FL120.
 - SPECIAL ALTN MNM 800/4.0KM.
 - NO CIRCLING N OF RWY 12 / 30 BEYOND 3NM.
 - CTA CONTAINMENT NOT ASSURED WHEN HOLDING AT LISZT AT OR BLW 6500ft.

| CATEGORY | A | B | C | D |
|------------|----------------|----------------|-----------------|-----------------|
| S-I ILS | | 2100 (314) 0.8 | | |
| S-I LOC | | 2320 (531-2.1) | | |
| CIRCLING* | 2570 (781-2.4) | | 2990 (1201-4.0) | 2990 (1201-5.0) |
| ALTERNATE* | (1281-4.4) | | (1701-6.0) | (1701-7.0) |

Changes: WPT NAMES.

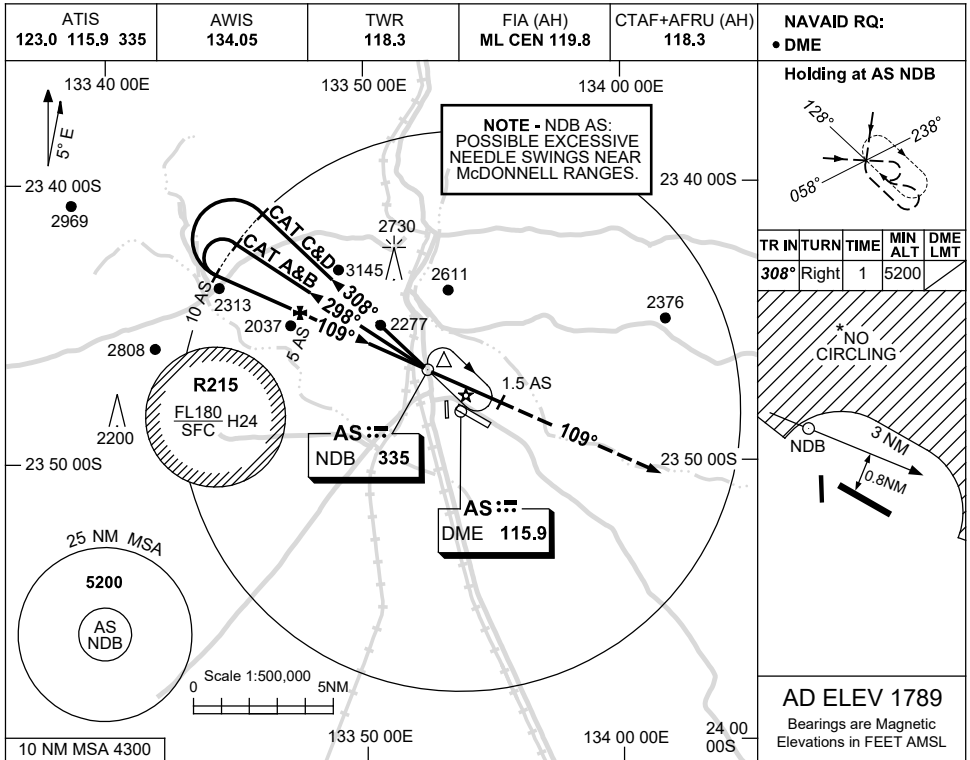
BASII02-180

USE QNH

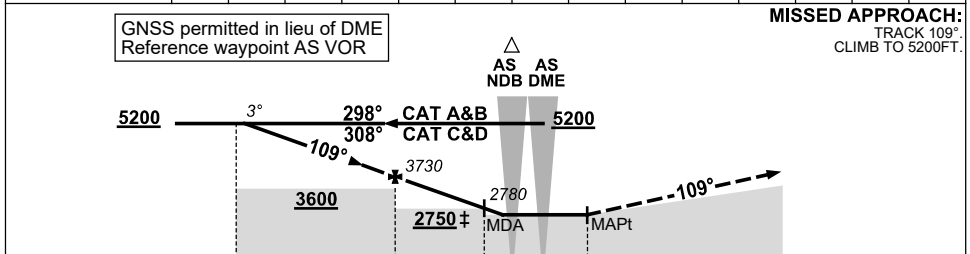
NDB-B

17 JUN 2021

ALICE SPRINGS, NT (YBAS)



| | | | | | | | | | | | | | | |
|--------------------|------|------|------|------|------|------|------|------|------|------|--|--|--|--|
| DME DIST | 9.6 | 9 | 8 | 7 | 6 | 5 | 4 | 3 | 2 | 1.3 | | | | |
| ALT (3° APCH PATH) | 5200 | 5010 | 4700 | 4380 | 4050 | 3730 | 3410 | 3090 | 2780 | 2570 | | | | |



NOTES

1. MAX IAS:
INITIAL : 210KT.
HOLDING : 210KT.
HLDG NOT ABOVE FL120.
- ‡2. CAT C&D ACFT DO NOT DESCEND BLW CIRCLING MINIMA.
- *3. NO CIRCLING N OF RWY 12/30 BEYOND 3NM.

| CATEGORY | A | B | C | D |
|------------|----------------|-----------------|-----------------|---|
| CIRCLING * | 2570 (781-2.4) | 2990 (1201-4.0) | 2990 (1201-5.0) | |
| ALTERNATE | (1281-4.4) | (1701-6.0) | (1701-7.0) | |

Changes: COORD FMT, Editorial.

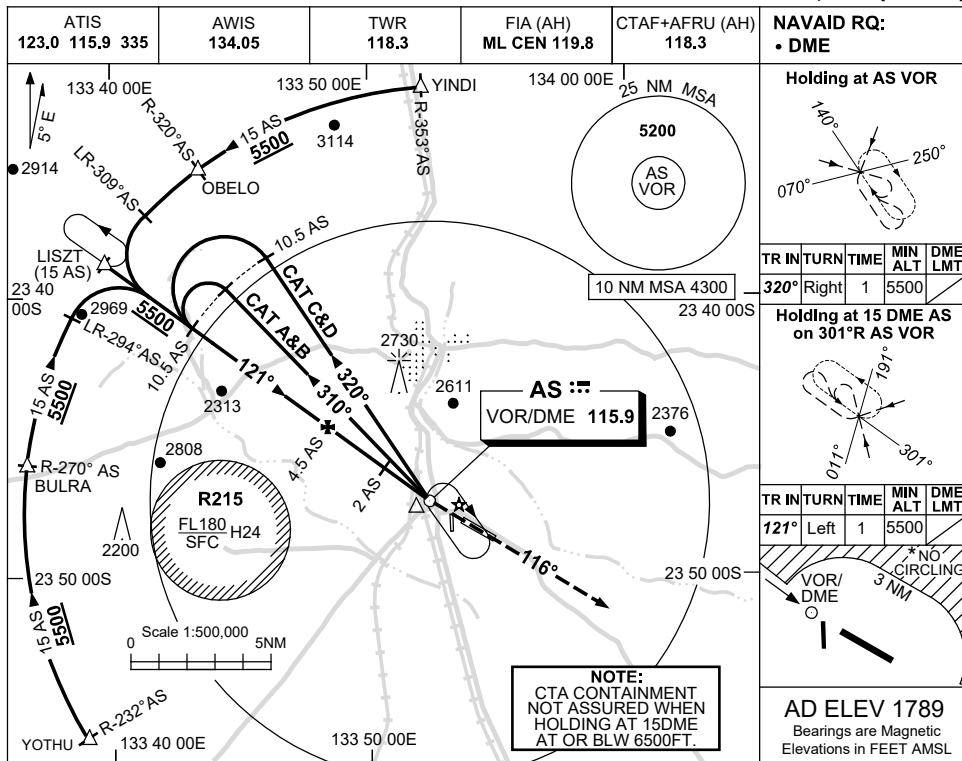
BASNB02-167

USE QNH

VOR RWY 12

5 SEP 2024

ALICE SPRINGS, NT (YBAS)



Holding at AS VOR

| TR | IN | TURN | TIME | MIN ALT | DME LMT |
|------|-------|------|------|---------|---------|
| 320° | Right | 1 | 5500 | | |

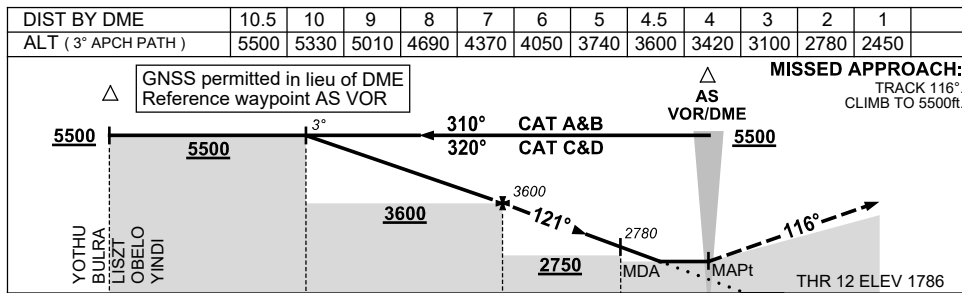
Holding at 15 DME AS on 301°R AS VOR

| TR | IN | TURN | TIME | MIN ALT | DME LMT |
|------|------|------|------|---------|---------|
| 121° | Left | 1 | | | |

NO CIRCLING

VOR/DME 3 NM

AD ELEV 1789
Bearings are Magnetic
Elevations in FEET AMSL



NOTES

- MAX IAS:
INITIAL : 210KT.
HOLDING : 185KT.
HLDG NOT ABOVE FL120.
- SPECIAL ALTN MNM 800/4.0KM.
- NO CIRCLING N OF RWY 12 / 30 BEYOND 3NM.

| CATEGORY | A | B | C | D |
|-------------|----------------|---|-------------------------------|---|
| S-I VOR/DME | 2450 (661-2.9) | | | |
| CIRCLING * | 2570 (781-2.4) | | 2990(1201-4.0) 2990(1201-5.0) | |
| ALTERNATE‡ | (1281-4.4) | | (1701-6.0) (1701-7.0) | |

Changes: WPT NAMES, Editorial.

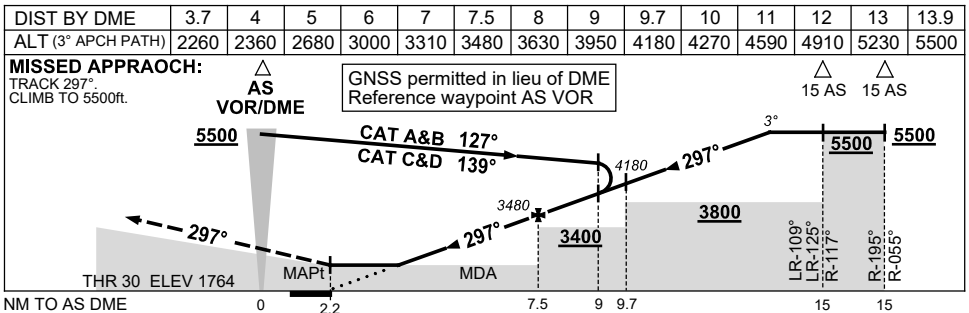
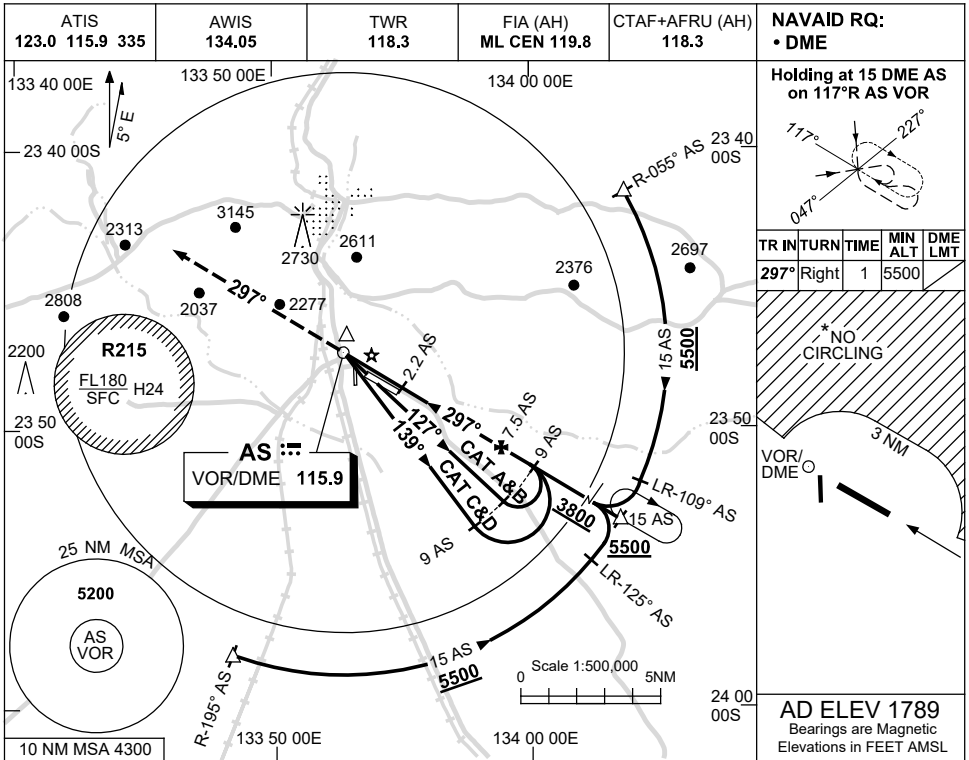
BASV001-180

USE QNH

VOR RWY 30

13 JUN 2024

ALICE SPRINGS, NT (YBAS)



NOTES

1. MAX IAS:
INITIAL : 210KT.
- * 2. SPECIAL ALTN MNM
800/4.0KM.
- * 3. NO CIRCLING N
OF RWY 12/30
BEYOND 3NM.
4. CTA CONTAINMENT
NOT ASSURED WHEN
HOLDING AT OR BLW
6500FT.

| CATEGORY | A | B | C | D |
|-------------|----------------|-----------------|-----------------|---|
| S-I VOR/DME | 2260 (496-2.8) | | | |
| CIRCLING* | 2570 (781-2.4) | 2990 (1201-4.0) | 2990 (1201-5.0) | |
| ALTERNATE* | (1281-4.4) | (1701-6.0) | (1701-7.0) | |

Changes: NOTE 4.

BASV002-179