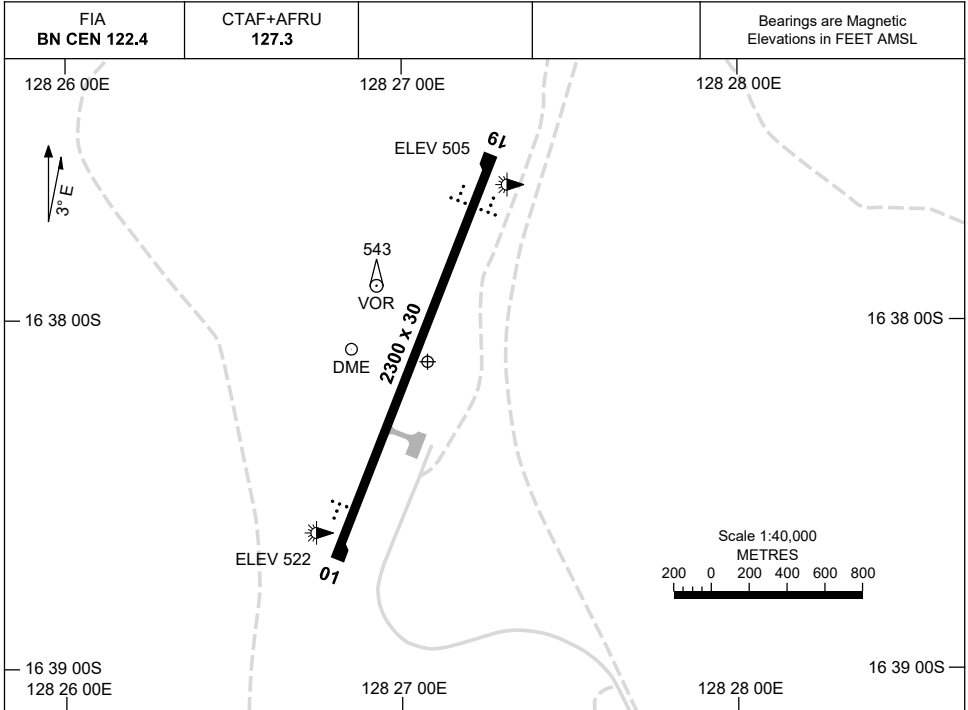


1 DEC 2022

AD ELEV 522
16 38 13S 128 27 05E

AERODROME CHART
ARGYLE, WA (YARG)



	AERODROME LIGHTING
RWY	TAXIWAY : BLUE EDGE RL : MAN ACT PPR ARO , SDBY (27 SEC) , PTBL PPR (ARO : 0404 450 062)
01 ⁰¹⁹ ¹⁹⁹ 19	AT-VASIS LEFT SIDE 3.0° 41FT LIRL T-VASIS 3.0° 41FT LIRL

NOTES

1. AWIS (PHONE) 08 6216 2601
2. FIA FREQ 122.4 BELOW 6000FT NOT AVBL.

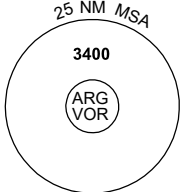
Changes: NOTE 2 DELETED.

ARGAD01-173

DME or GNSS ARRIVAL PROCEDURES ARGYLE, WA (YARG)

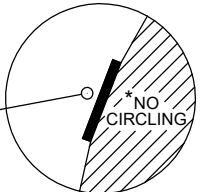
16 JUN 2022

FIA BN CEN 122.4	CTAF+AFRU 127.3			Bearings are Magnetic Elevations in FEET AMSL
---------------------	--------------------	--	--	--



**DME USING ARG DME
REFERENCE WAYPOINT ARG VOR**
AWIS (PHONE) 08 6216 2601

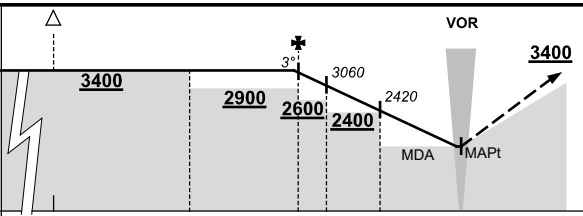
ARG **VOR/DME 113.9**



* NO CIRCLING EAST
OF RWY 01/19.

10 NM MSA 3400

AD ELEV 522



MISSED APPROACH:
TURN AS REQUIRED,
TRACK 111°. CLIMB TO 3400FT.

NM TO ARG VOR	25	15	10	6	5	3	0
---------------	----	----	----	---	---	---	---

CIRCLING MINIMA	A,B: 1530-2.4	C: 1990-4.0	D: 2360-5.0
------------------------	----------------------	--------------------	--------------------

NM TO ARG VOR	6.1	6	5	4	3	2.8	2	1.7	1	0.2				
ALT (3° APCH PATH)	3400	3380	3060	2740	2420	2360	2100	1990	1780	1530				

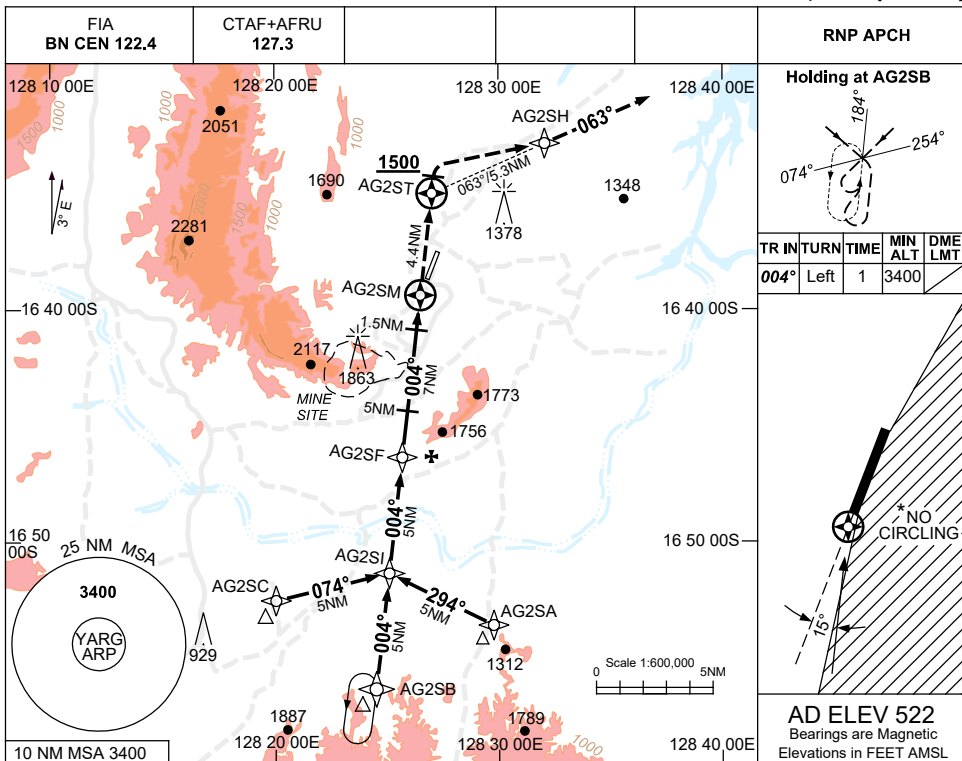
Changes: SECTOR BOUNDARIES, MISSED APCH TRACK.

ARGDG01-171

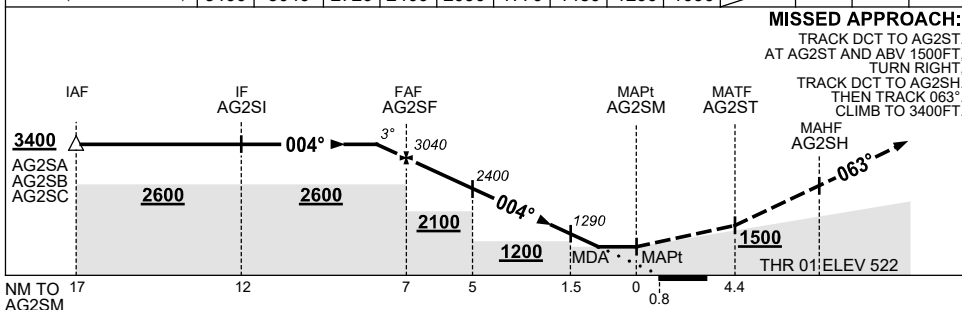
USE QNH

RNP RWY 01
ARGYLE, WA (YARG)

8 SEP 2022



NM TO NEXT WPT	1.1	AG2SF	6	5	4	3	2	1.5	0.9	AG2SM		
ALT (3° APCH PATH)	3400	3040	2720	2400	2090	1770	1450	1290	1090			



MISSED APPROACH:
TRACK DCT TO AG2ST.
AT AG2ST AND ABV 1500FT,
TURN RIGHT,
THEN TRACK 063°. CLIMB TO 3400FT.

NOTES

CATEGORY	A	B	C	D
LNAV	1090 (568-3.2)			
CIRCLING *	1340 (818-2.4)	1990 (1468-4.0)	2360 (1838-5.0)	
ALTERNATE	(1318-4.4)	(1968-6.0)	(2338-7.0)	

- MAX IAS: INITIAL : 210KT.
- * NO CIRCLING EAST OF RWY 01/19.
- COLOUR: SEE SPEC NOTICES.
- AWIS (PHONE) 08 6216 2601

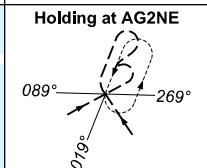
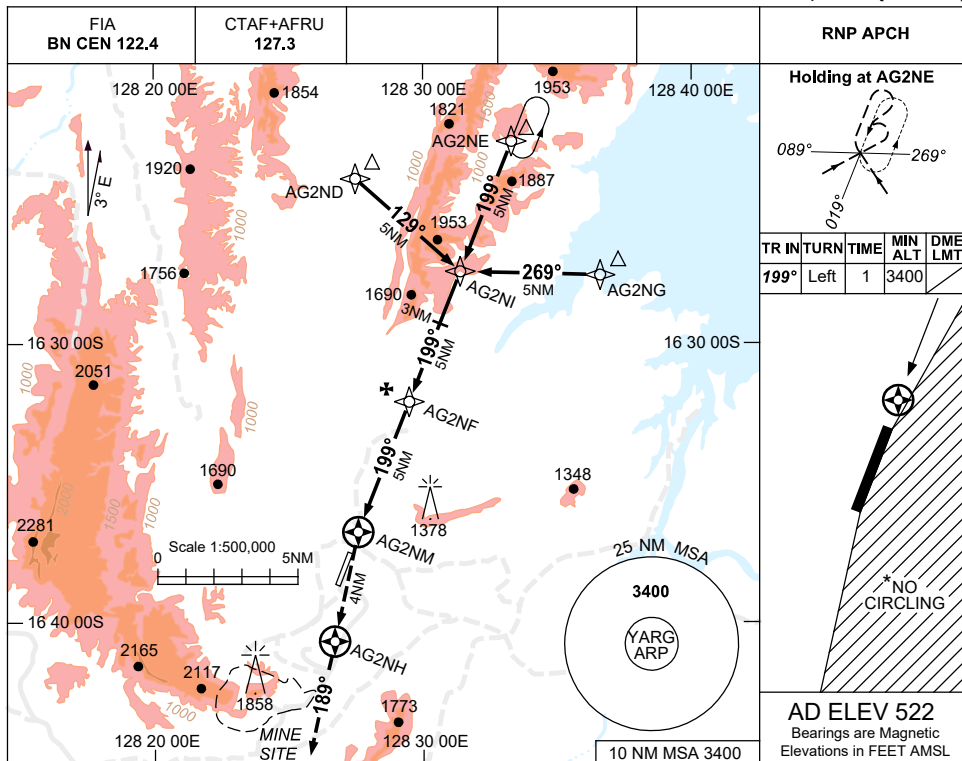
Changes: CHART TITLE, PBN SPECIFICATION BOX.

ARGGN01-172

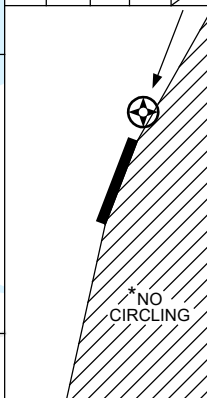
USE QNH

RNP RWY 19
ARGYLE, WA (YARG)

8 SEP 2022

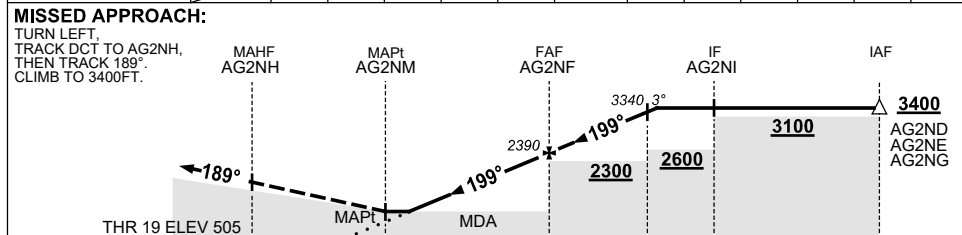


TR	IN	TURN	TIME	MIN	DME
				ALT	LMT
199°	Left		1	3400	



AD ELEV 522
Bearings are Magnetic
Elevations in FEET AMSL

NM TO NEXT WPT	AG2NM	0.5	1	2	3	4	AG2NF	1	2	3.2			
ALT (3° APCH PATH)		960	1110	1430	1750	2070	2390	2710	3030	3400			



NM TO AG2NM	4	0.8	0	5	8	10	15
-------------	---	-----	---	---	---	----	----

NOTES

CATEGORY	A	B	C	D
LNAV	960 (455-2.6)			
CIRCLING*	1340 (818-2.4)	1990 (1468-4.0)	2360 (1838-5.0)	
ALTERNATE	(1318-4.4)	(1968-6.0)	(2338-7.0)	

- MAX IAS: INITIAL : 210KT.
- NO CIRCLING EAST OF RWY 01/19.
- COLOUR: SEE SPEC NOTICES.
- AWIS (PHONE) 08 6216 2601

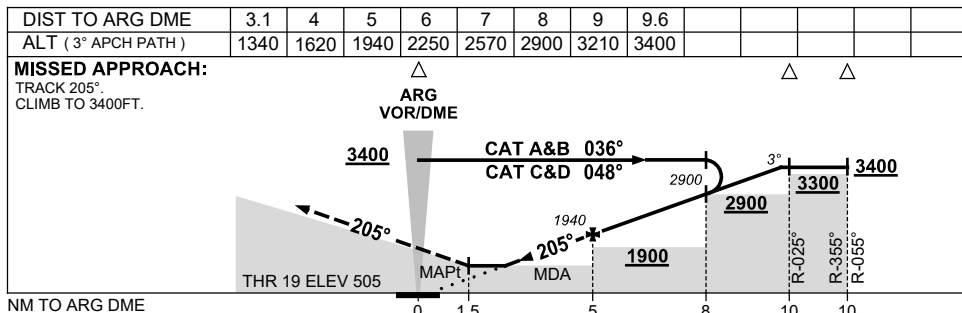
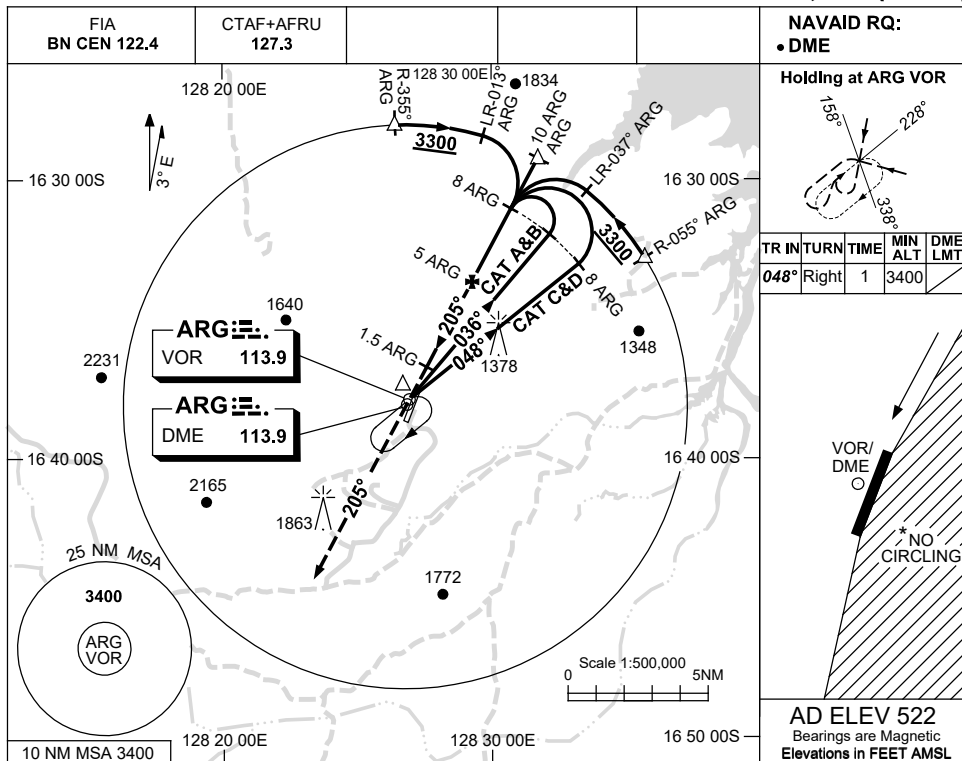
Changes: CHART TITLE, PBN SPECIFICATION BOX.

ARGGN02-172

USE QNH

VOR RWY 19
ARGYLE, WA (YARG)

15 AUG 2019



NOTES

CATEGORY	A	B	C	D
S-I VOR/DME	1340 (835-4.8)			
CIRCLING*	1340 (818-2.4)	1990(1468-4.0)	2360(1838-5.0)	
ALTERNATE	(1318-4.4)	(1968-6.0)	(2338-7.0)	

1. MAX IAS:
INITIAL : 210KT.
- * 2. NO CIRCLING EAST OF RWY 01/19.
3. AWIS (PHONE)
08 6216 2601

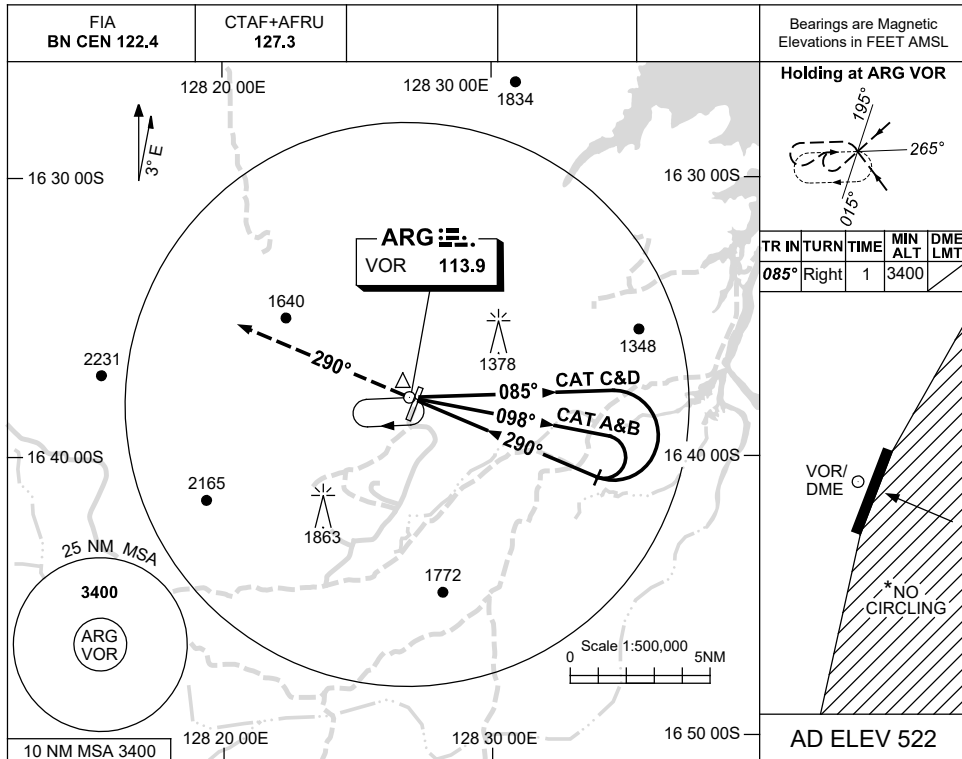
Changes: NOTE 3, COORD FORMAT, Editorial.

ARGV001-160

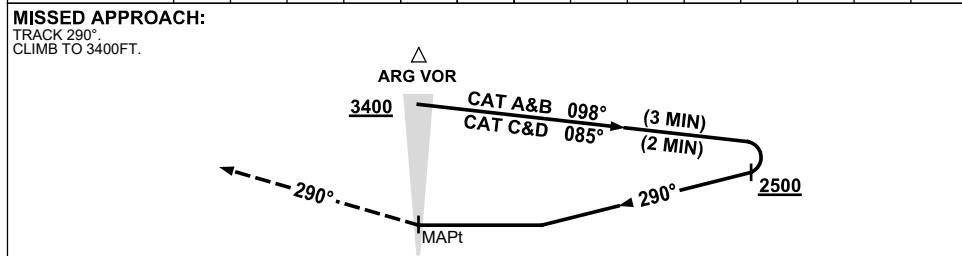
USE QNH

VOR-A
ARGYLE, WA (YARG)

15 AUG 2019



DME DIST	NOT APPLICABLE							
ALT								



NOTES

CATEGORY	A	B	C	D
CIRCLING*	1340 (818-2.4)	1990 (1468-4.0)	2360 (1838-5.0)	
ALTERNATE	(1318-4.4)	(1968-6.0)	(2338-7.0)	

1. MAX IAS:
INITIAL : 210KT.
- * 2. NO CIRCLING EAST OF RWY 01/19.
3. AWIS (PHONE)
08 6216 2601

Changes: NOTE 3, COORD FORMAT, Editorial.

ARGVO02-160