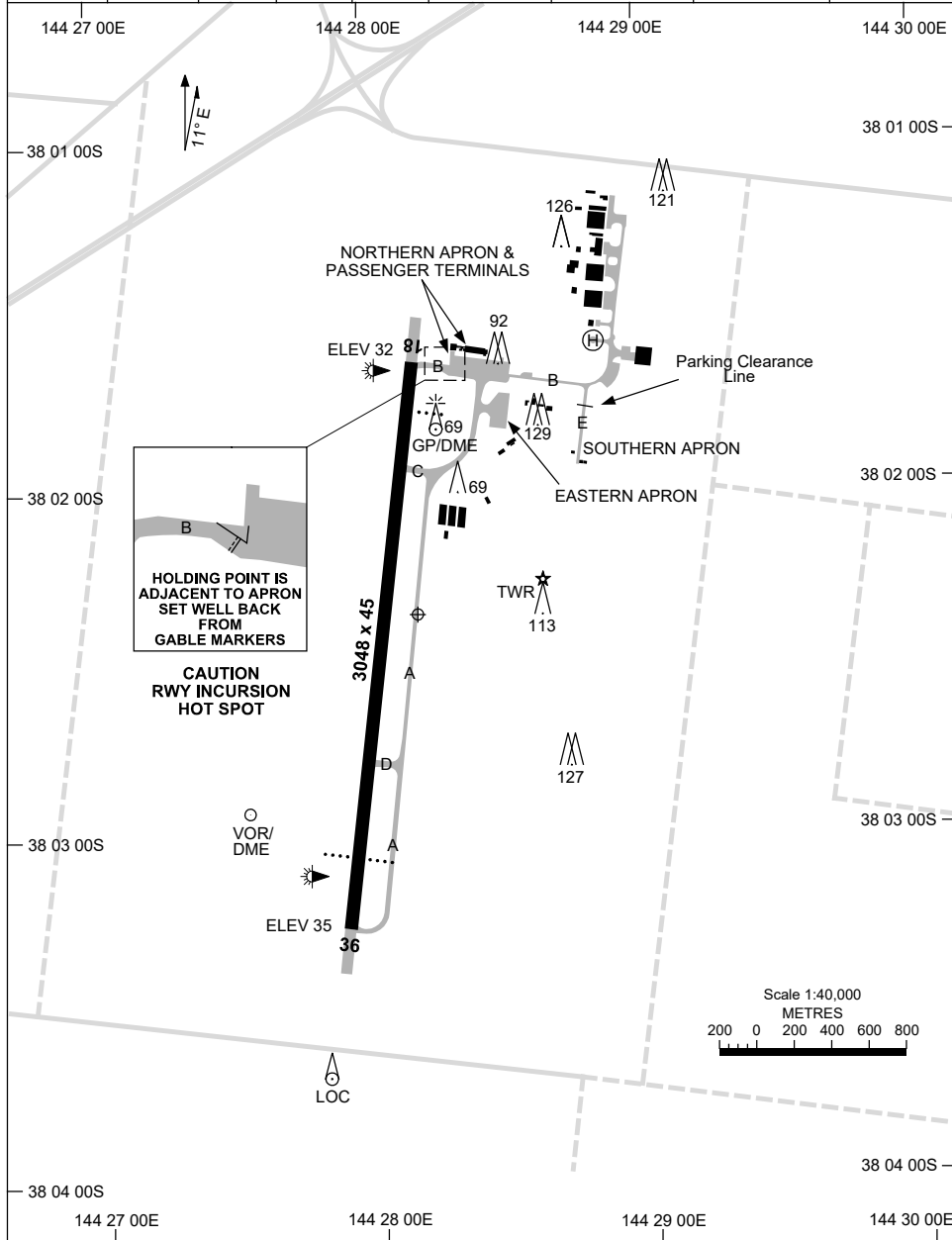


21 MAR 2024

AD ELEV 35  
38 02 22S 144 28 10E

AERODROME CHART - Page 1  
**AVALON, VIC (YMAV)**

ATIS 118.2 116.1	AWIS (AH) 116.1	AV APP 133.55	TWR 120.1	UNICOM 129.3	FIA (AH) ML CEN 135.7	CTAF+AFRU (AH) 120.1	AFRU+PAL (AH) 120.1	BRG are MAG ELEV in FT AMSL
---------------------	--------------------	------------------	--------------	-----------------	--------------------------	-------------------------	------------------------	--------------------------------



Changes: PARKING CLEARANCE ADDED, Editorial.

MAVAD01-178

15 JUN 2023

AD ELEV 35  
38 02 22S 144 28 10E

AERODROME CHART - Page 2  
**AVALON, VIC (YMAV)**

ATIS 118.2 116.1	AWIS (AH) 116.1	AV APP 133.55	TWR 120.1	UNICOM 129.3	FIA (AH) ML CEN 135.7	CTAF+AFRU (AH) 120.1	AFRU+PAL (AH) 120.1	BRG are MAG ELEV in FT AMSL
---------------------	--------------------	------------------	--------------	-----------------	--------------------------	-------------------------	------------------------	--------------------------------

--	--	--	--	--	--	--	--	--

	<b>AERODROME LIGHTING</b>
--	---------------------------

<b>RWY</b>	ABN : FLG W 4 SEC TAXIWAY : GREEN CENTRELINE RL : MAN , AFRU+PAL (AH) 120.1 , 1 SEC DURING LVP ; 15 SEC OT
------------	--

<b>18</b> <sup>176</sup>	PAPI LEFT SIDE 3.0° 69FT MIRL
<sup>356</sup> <b>36</b>	PAPI BOTH SIDES 3.0° 65FT MIRL

--	--

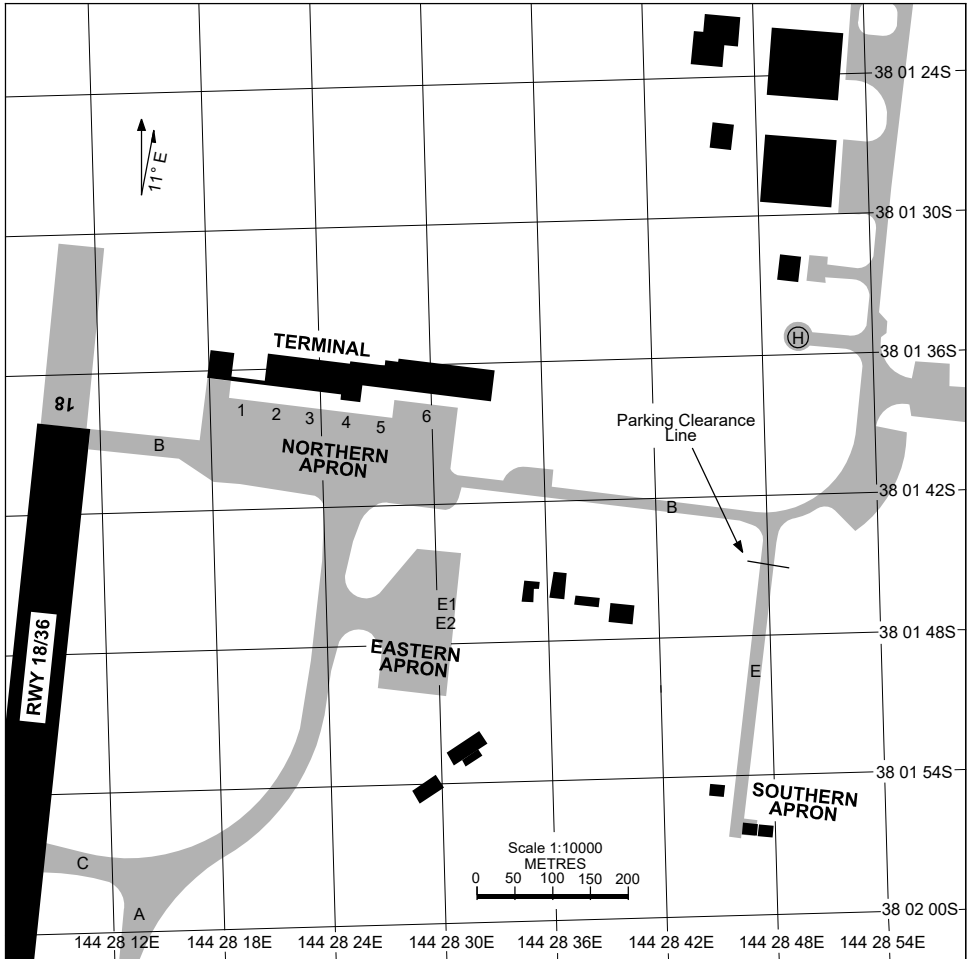
**NOTES**

Changes: REMOVED NOTES.

MAVAD02-175

21 MAR 2024

APRON CHART  
**AVALON, VIC (YMAV)**



**PARKING POSITION INFORMATION**

BAYS	CO-ORDINATES	ELEV (ft)	CAPACITY	HYDRANT FUEL	DOCKING SYSTEM
1	38 01 37.31S 144 28 19.78E	30	A320/A321	JET A1	
2	38 01 37.51S 144 28 21.65E	31	A320	JET A1	
3	38 01 37.70S 144 28 23.44E	31	A320	JET A1	
4	38 01 37.92S 144 28 25.48E	31	A320/A321	JET A1	
5	38 01 38.24S 144 28 27.26E	31	A321	JET A1	
6	38 01 38.16S 144 28 29.78E	32	A333/B748	JET A1	
E1	38 01 46.27S 144 28 30.53E	31	B748	JET A1	
E2	38 01 47.10S 144 28 30.37E	31	B748	JET A1	

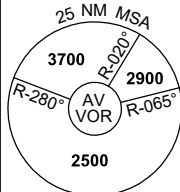
Changes: PARKING CLEARANCE LINE ADDED, Editorial.

MAVAP01-178

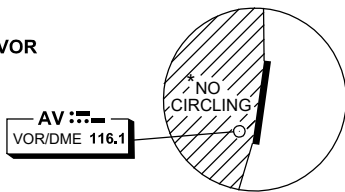
# DME or GNSS ARRIVAL PROCEDURES AVALON, VIC (YMAV)

21 MAR 2024

ATIS 118.2 116.1	AWIS (AH) 116.1	AV APP 133.55	TWR 120.1	FIA (AH) ML CEN 135.7	CTAF+AFRU (AH) 120.1	AFRU+PAL (AH) 120.1	Bearings are Magnetic Elevations in FEET AMSL
---------------------	--------------------	------------------	--------------	--------------------------	-------------------------	------------------------	--

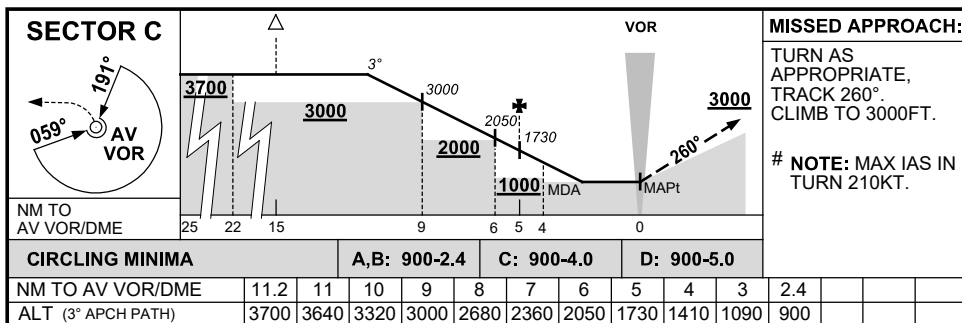
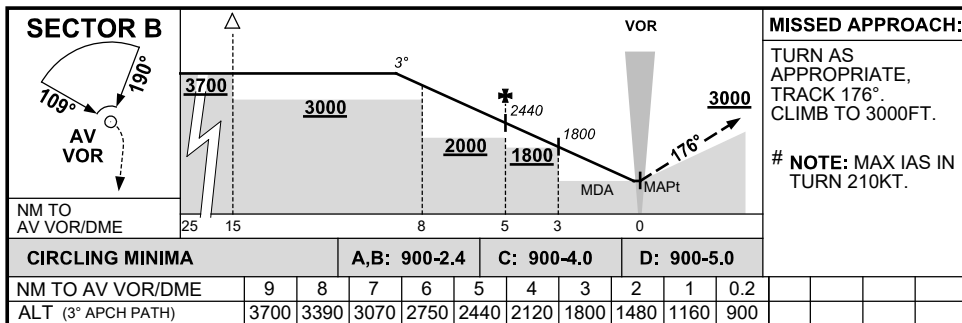
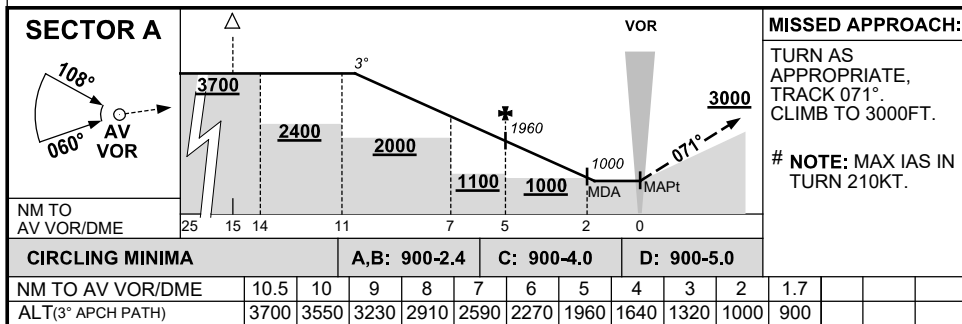


## DME USING AV DME REFERENCE WAYPOINT AV VOR



10 NM MSA 2500

AD ELEV 35



Changes: SECTOR A MNM SEGMENT ALT.

MAVDG01-178

**STANDARD INSTRUMENT DEPARTURES (SID)  
 AVALON FIVE DEPARTURE (RADAR)  
 AVALON, VIC (YMAV)**

**24 MAR 2022**

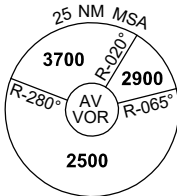
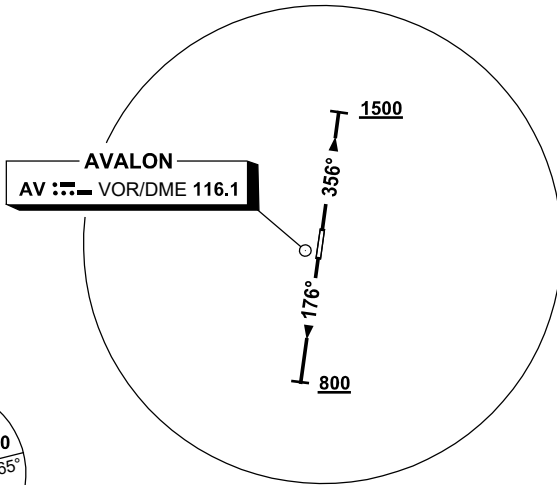
ATIS 118.2 116.1	AWIS (AH) 116.1	AV APP 133.55	TWR 120.1	FIA (AH) ML CEN 135.7	CTAF+AFRU (AH) 120.1	AFRU+PAL (AH) 120.1	Bearings are Magnetic Elevations in FEET AMSL
---------------------	--------------------	------------------	--------------	--------------------------	-------------------------	------------------------	--

NOT TO SCALE



**SPEED  
 MAX IAS 250KT  
 BELOW 10,000ft**

**CLASS D SPEED  
 LIMITS APPLY**



10 NM MSA 2500

GRAD 3.3%

**AVALON FIVE DEPARTURE (RADAR)**

**RWY 18**

- Track 176°
- At or ABV 800ft turn to assigned heading or track
- Contact AV Approach for Radar Vector

**RWY 36**

- Track 356°
- At or ABV 1500ft turn to assigned heading or track
- Contact AV Approach for Radar Vector

**COMMUNICATIONS FAILURE PROCEDURE**

On recognition of communication failure

- Squawk 7600
- Maintain last assigned vector for two minutes, and
- CLIMB IF NECESSARY TO MINIMUM SAFE ALTITUDE, to maintain terrain clearance, then
- proceed in accordance with the latest ATC route clearance acknowledged.

**STANDARD INSTRUMENT DEPARTURES (SID)  
JUSTY THREE DEPARTURE (RNAV)  
AVALON, VIC (YMAV)**

**21 MAR 2024**

ATIS 118.2 116.1	AWIS (AH) 116.1	AV APP 133.55	TWR 120.1	FIA (AH) ML CEN 135.7	CTAF+AFRU (AH) 120.1	AFRU+PAL (AH) 120.1	Bearings are Magnetic Elevations in FEET AMSL
---------------------	--------------------	------------------	--------------	--------------------------	-------------------------	------------------------	--

NOT TO SCALE

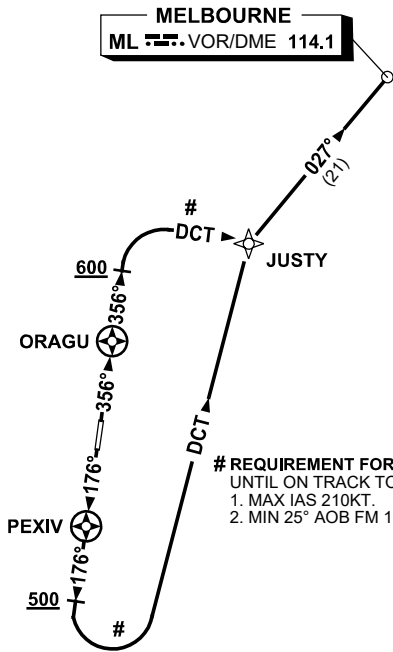


**MELBOURNE**  
ML VOR/DME 114.1

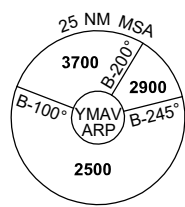
**SPEED**  
MAX IAS 250KT  
BLW 10,000FT

**CLASS D SPEED**  
LIMITS APPLY

**RNP1**



**# REQUIREMENT FOR AIRSPACE CONTAINMENT**  
UNTIL ON TRACK TO JUSTY:  
1. MAX IAS 210KT.  
2. MIN 25° AOB FM 160KT TO 210KT.



10 NM MSA 2500

**JUSTY THREE DEPARTURE**

**RWY 18**

- GRAD 3.3%
- Track 176°
- AT or ABV 500ft but not before PEXIV turn LEFT, track DCT to JUSTY #
- Turn RIGHT, track 027° to ML, thence as cleared

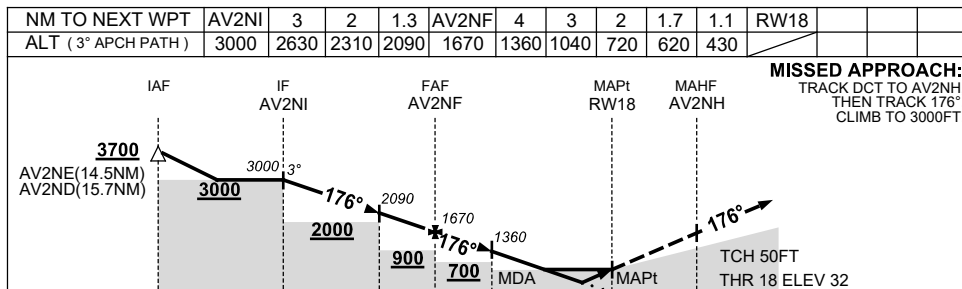
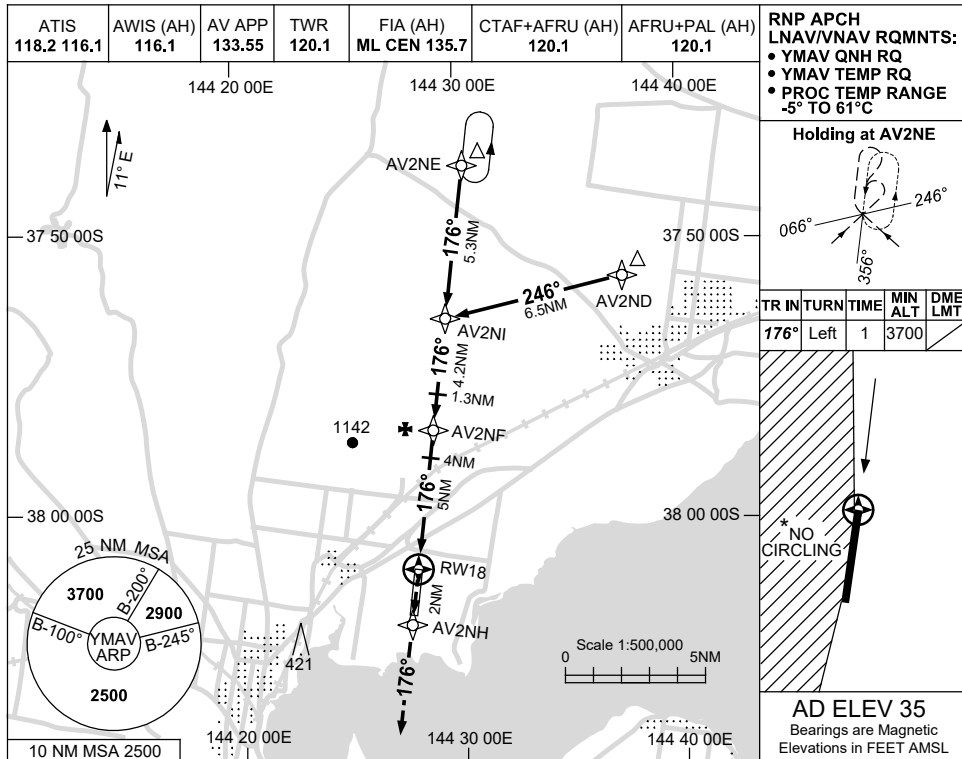
**RWY 36**

- GRAD 3.3%
- Track 356°
- AT or ABV 600ft but not before ORAGU turn RIGHT, track DCT to JUSTY #
- Turn LEFT, track 027° to ML, thence as cleared

USE QNH

RNP RWY 18  
**AVALON, VIC (YMAV)**

30 NOV 2023



**NOTES**

CATEGORY	A	B	C	D
LNAV/VNAV		430 (398-2.2)		
LNAV		620 (585-3.3)		
CIRCLING*	660 (625-2.4)	760 (725-4.0)	830 (795-5.0)	
ALTERNATE	(1125-4.4)	(1225-6.0)	(1295-7.0)	

- \* 1. NO CIRCLING WEST OF RWY 18/36.
- 2. HOLDING NOT CONTAINED WITHIN CTA.

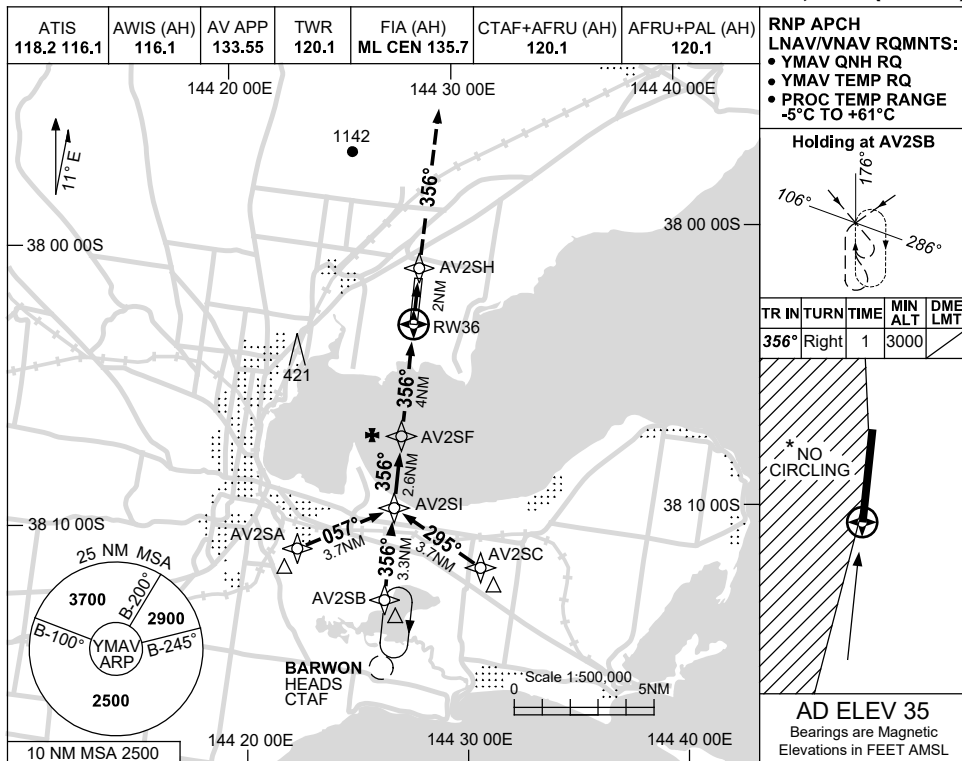
Changes: REVISED PROC, Editorial.

MAVGN01-177

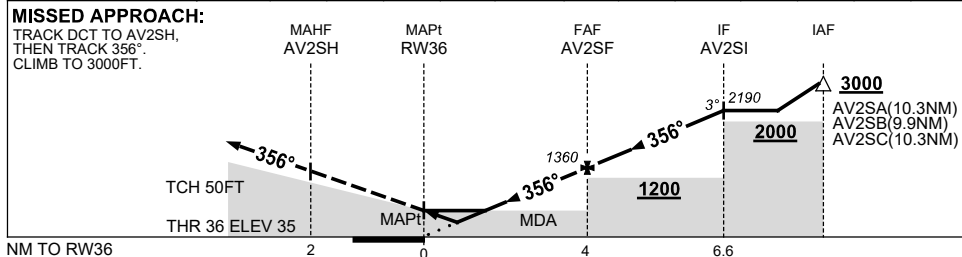
USE QNH

RNP Z RWY 36  
**AVALON, VIC (YMAV)**

30 NOV 2023



NM TO NEXT WPT	RW36	0.9	1.5	2	3	AV2SF	1	2	AV2SI			
ALT (3° APCH PATH)		370	550	720	1040	1360	1680	2000	2190			



**NOTES**

CATEGORY	A	B	C	D
LNAV/VNAV	<b>370</b> (335-1.9)			
LNAV	<b>550</b> (515-2.9)			
CIRCLING *	<b>660</b> (625-2.4)	<b>760</b> (725-4.0)		<b>830</b> (795-5.0)
ALTERNATE	(1125-4.4)		(1225-6.0) (1295-7.0)	

1. MAX IAS: INITIAL : 190KT.
- \*2. NO CIRCLING WEST OF RWY 18/36.
3. HOLDING NOT CONTAINED WITHIN CTA.

Changes: WPT NAMING CONVENTION, Editorial.

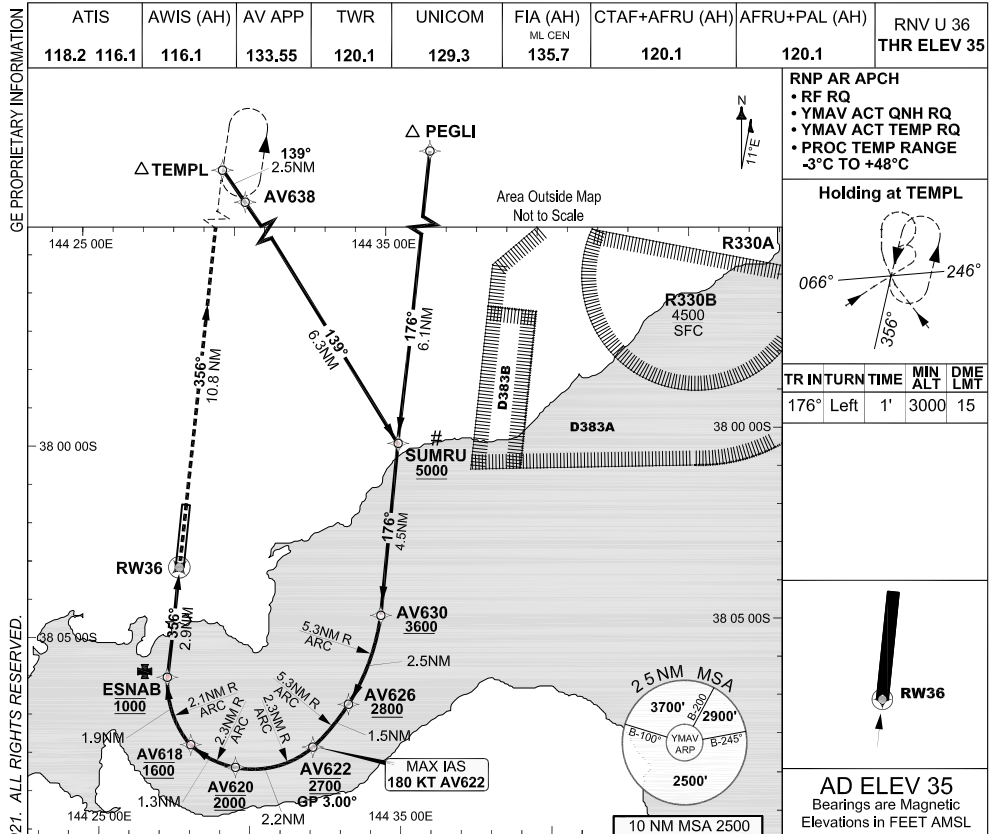
MAVGN02-177



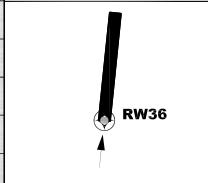
**FOR CASA APPROVED  
OPERATORS ONLY  
USE QNH**

RNP U RWY 36 (AR)  
**AVALON, VIC (YMAV)**

**24 MAR 2022**



TR IN	TURN TIME	MIN ALT	DME LMT
176°	Left	1'	3000 15

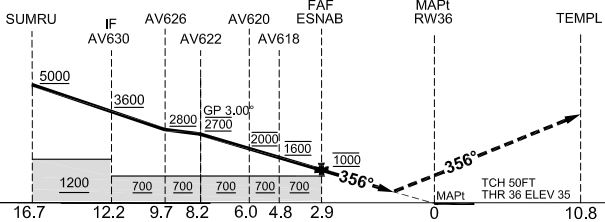


**AD ELEV 35**  
Bearings are Magnetic  
Elevations in FEET AMSL

	SUMRU	AV630	AV626	AV622	AV620	AV618	ESNAB
<b>ALT (3.00° APCH PATH)</b>	5412	3977	3177	2700	2000	1600	1000

**MISSED APPROACH:**

Climb to 3000FT or as directed by ATC via the RNP AR Missed Approach track to TEMPL.



**NOTES**

1. PAPI not coincident with VPA.
2. RNP 0.3 Required from AV638 to ESNAB.
3. RNP 0.3 Required from PEGLI to ESNAB.
4. Climb gradient of 4.5% to 3000FT required to reach TEMPL.
5. HLDG pattern not contained within CTA.
6. Latest Intercept Point (LIP)

CATEGORY	A	B	C	D
RNP (0.30)			DA(H) <b>428</b> (393 - 2.2)	DA(H) <b>428</b> (393 - 2.2)
RNP (0.15)			DA(H) <b>362</b> (327 - 1.8)	DA(H) <b>362</b> (327 - 1.8)
CIRCLING	N/A		NOT AUTHORISED	NOT AUTHORISED
ALTERNATE				

Changes: BRIEFING STRIP

MAVGN03-170

**DO NOT USE FOR NAVIGATION**

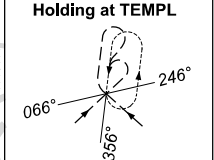
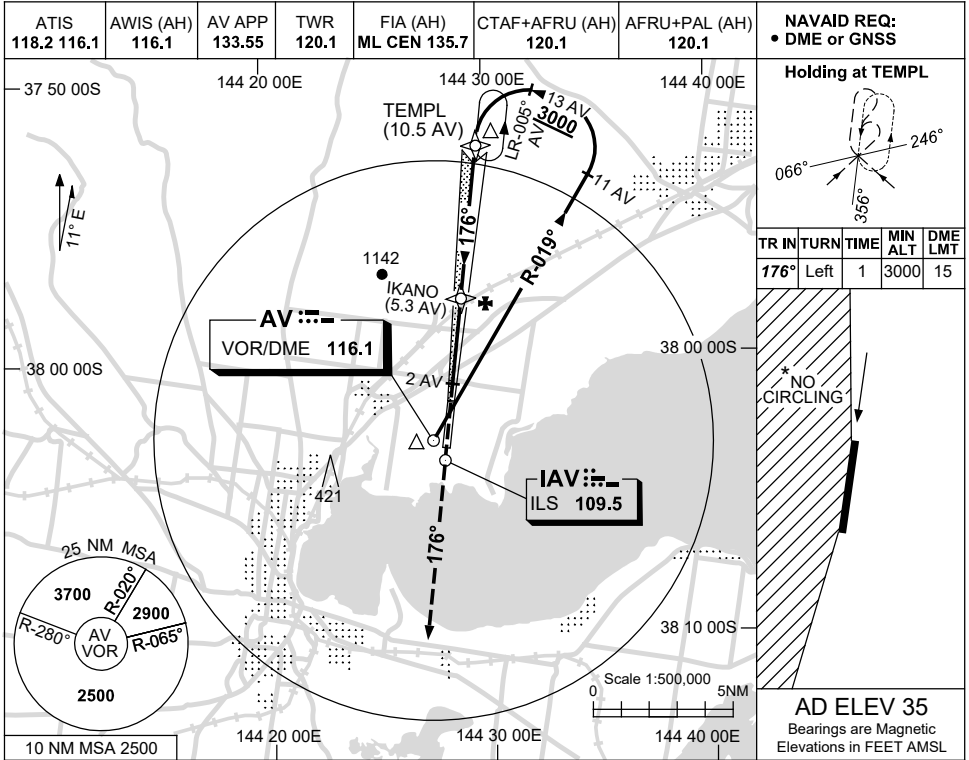
Prepared by GE Aviation - ICAO Doc 9905 Compliant



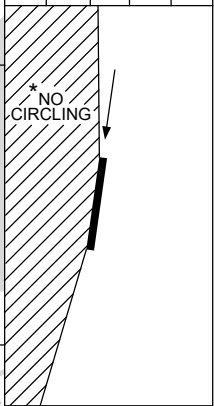
USE QNH

ILS-Y or LOC-Y RWY 18  
**AVALON, VIC (YMAV)**

24 MAR 2022

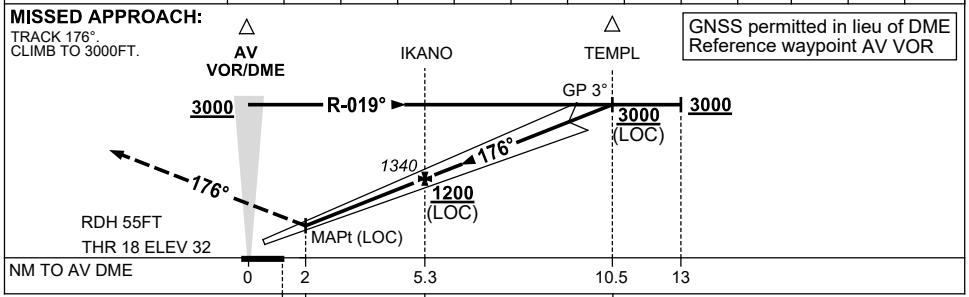


TR	IN	TURN	TIME	MIN	DME
176°	Left	1	3000	15	



**AD ELEV 35**  
 Bearings are Magnetic  
 Elevations in FEET AMSL

NM TO AV DME	3.1	4	5.3	6	7	8	8.9	9	10	10.5			
ALT (3° APCH PATH)	620	920	1340	1560	1880	2200	2500	2520	2840	3000			



**NOTES**

- \* 1. NO CIRCLING WEST OF RWY 18/36.
- 2. HLDG PATTERN NOT CONTAINED WITHIN CTA.

CATEGORY	A	B	C	D
S-I ILS		390 (358) 2.0 (VIS 1.5 WITH ACTUAL QNH)		
S-I LOC		620 (585-3.3)		
CIRCLING *	660 (625-2.4)		760 (725-4.0)	830 (795-5.0)
ALTERNATE	(1125-4.4)		(1225-6.0)	(1295-7.0)

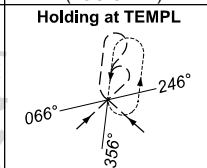
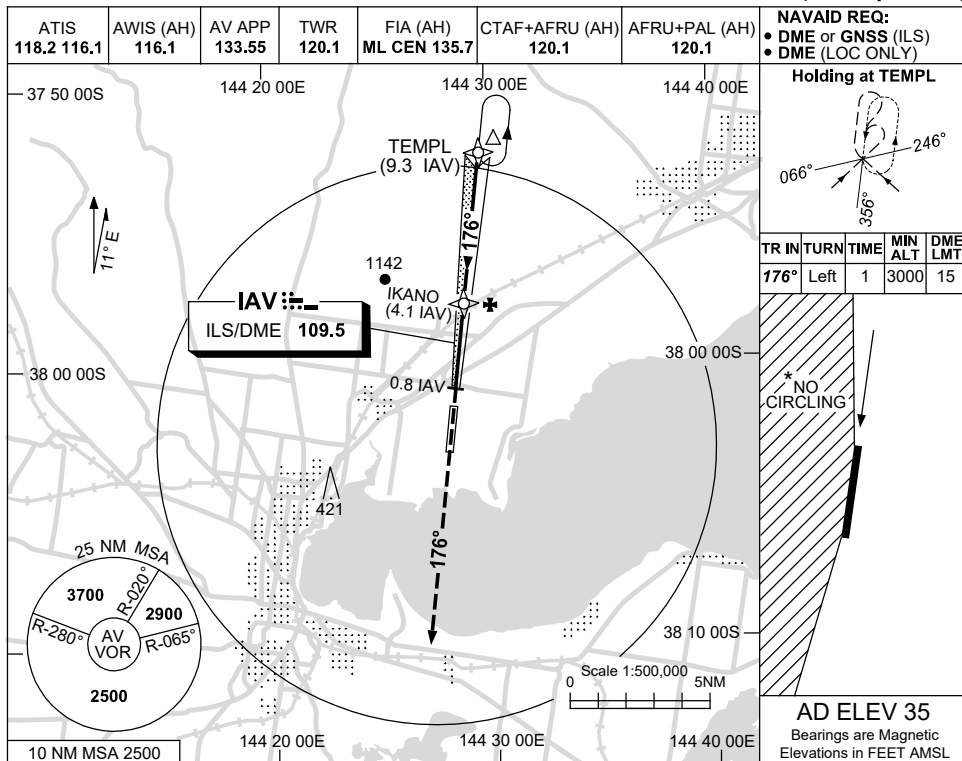
Changes: AWIS FREQ.

MAV/101-170

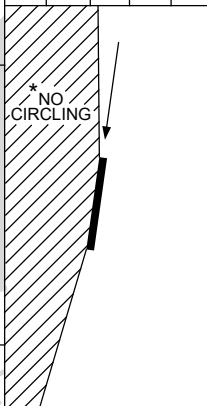
USE QNH

ILS-Z or LOC-Z RWY 18  
**AVALON, VIC (YMAV)**

24 MAR 2022

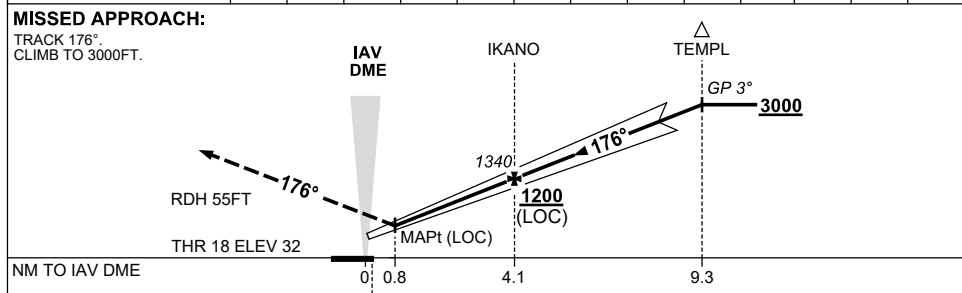


TR	TURN	TIME	MIN ALT	DME LMT
176°	Left	1	3000	15



**AD ELEV 35**  
 Bearings are Magnetic  
 Elevations in FEET AMSL

NM TO IAV DME	1.9	3	4.1	5	6	7	8	9	9.3				
ALT (3° APCH PATH)	620	980	1340	1620	1940	2250	2570	2890	3000				



NM TO IAV DME	0	0.8	4.1	9.3
NM TO THR 18	0	0.6	3.9	9.1

- NOTES**
1. NO CIRCLING WEST OF RWY 18/36.
  2. HLDG PATTERN NOT CONTAINED WITHIN CTA.

CATEGORY	A	B	C	D
S-I ILS		390 (358) 2.0 (VIS 1.5 WITH ACTUAL QNH)		
S-I LOC		620 (585-3.3)		
CIRCLING *	660 (625-2.4)		760 (725-4.0)	830 (795-5.0)
ALTERNATE	(1125-4.4)		(1225-6.0)	(1295-7.0)

Changes: AWIS FREQ.

MAVII02-170

## **NOISE ABATEMENT PROCEDURES AVALON**

### **1. PREFERRED FLIGHT PATHS**

- 1.1 Whenever possible, aircraft are to avoid the noise sensitive areas of Lara, Little River and Geelong Grammar School (Geelong Grammar is R 233 AV, 3NM, or 229 deg Mag 3.5NM from Avalon ARP).
- 1.2 Whenever possible, circuit training after 1100 UTC is to be conducted to the east of the airport.
- 1.3 If low level circuits are conducted to the west of the airport the downwind leg shall not be further than 4KM from the runway.

### **2. PREFERRED FLIGHT PATHS**

- 2.1 Between the hours 1300 and 2000 UTC the preferred runways will be:

**Landing** - RWY 36

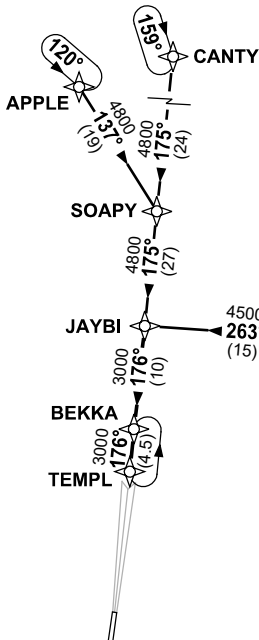
**Take-off** - RWY 18

**STANDARD INSTRUMENT ARRIVAL (STAR)  
JAYBI FIVE ARRIVAL (RNAV)  
AVALON, VIC (YMAV)**

**24 MAR 2022**

ATIS 118.2 116.1	AWIS (AH) 116.1	AV APP 133.55	TWR 120.1	FIA (AH) ML CEN 135.7	CTAF+AFRU (AH) 120.1	AFRU+PAL (AH) 120.1	Bearings are Magnetic Elevations in FEET AMSL
---------------------	--------------------	------------------	--------------	--------------------------	-------------------------	------------------------	--

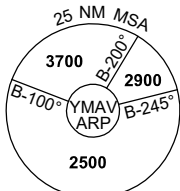
NOT TO SCALE



**SPEED  
MAX IAS 250KT  
BELOW 10,000ft**

**CLASS D SPEED  
LIMITS APPLY**

**MELBOURNE  
ML VOR/DME 114.1**



10 NM MSA 2500

**TRANSITION:**

**CANTY:** From CANTY to JAYBI:  
Track 175° to SOAPY  
Track 175° to JAYBI  
Then follow ARRIVAL instruction

**MELBOURNE:** From ML VOR to JAYBI:  
(ML VOR) Track 263° to JAYBI  
Then follow ARRIVAL instruction

**APPLE:** From APPLE to JAYBI:  
Track 137° to SOAPY  
Track 175° to JAYBI  
Then follow ARRIVAL instruction

**ARRIVAL: JAYBI FIVE (RNAV):**

**RWY 18:** From JAYBI:  
• Track 176° to BEKKA  
• Track 176° to TEMPL  
• Intercept RWY 18 LOC

**RWY 36:** From JAYBI:  
• Track 176° to BEKKA  
• Track 176° to TEMPL  
From TEMPL expect tracking instructions or radar vectors for final

**COMMUNICATIONS FAILURE: PROCEDURE IN IMC**

- Squawk 7600, comply with vertical navigation requirements, but not below MSA.
- Track via the latest STAR clearance to the nominated runway, then fly the most suitable approach in accordance with ERS A EMERG Section 1.5.

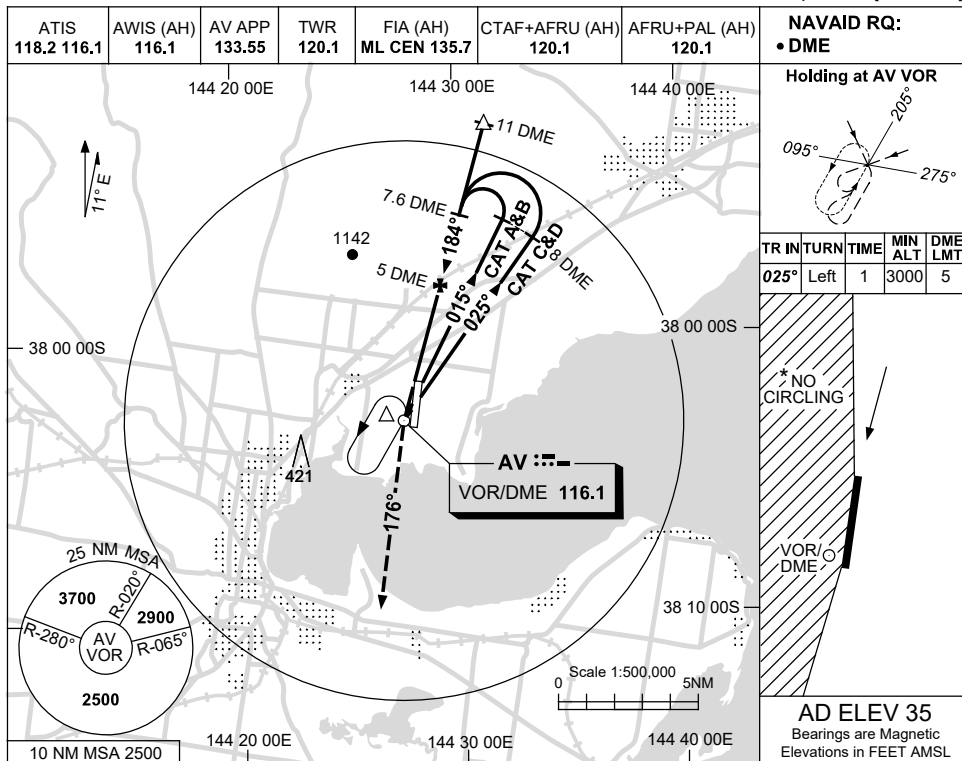
Changes: AWIS FREQ.

MAVSR01-170

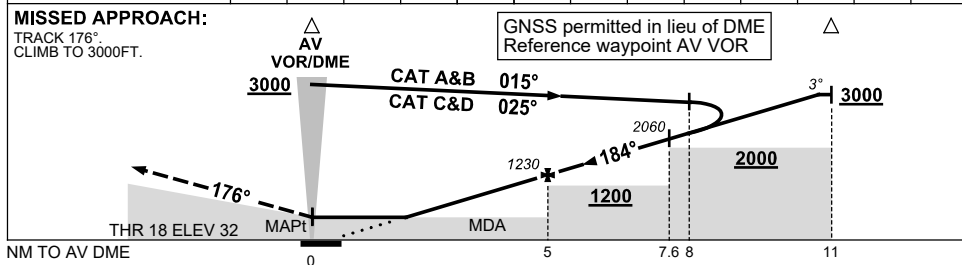
USE QNH

VOR RWY 18  
**AVALON, VIC (YMAV)**

24 MAR 2022



DIST TO AV DME	3	4	5	6	7	7.6	8	9	10	10.6		
ALT (3° APCH PATH)	620	910	1230	1550	1870	2060	2190	2500	2820	3000		



CATEGORY	A	B	C	D
S-I VOR/DME	<b>620 (585-3.3)</b>			
CIRCLING *	<b>660 (625-2.4)</b>		<b>830 (795-5.0)</b>	
ALTERNATE	(1125-4.4)		(1295-7.0)	

- NOTES**
- MAX IAS:  
INITIAL : 200KT.
  - NO CIRCLING WEST OF RWY 18/36.
  - HLDG PATTERN NOT CONTAINED WITHIN CTA.

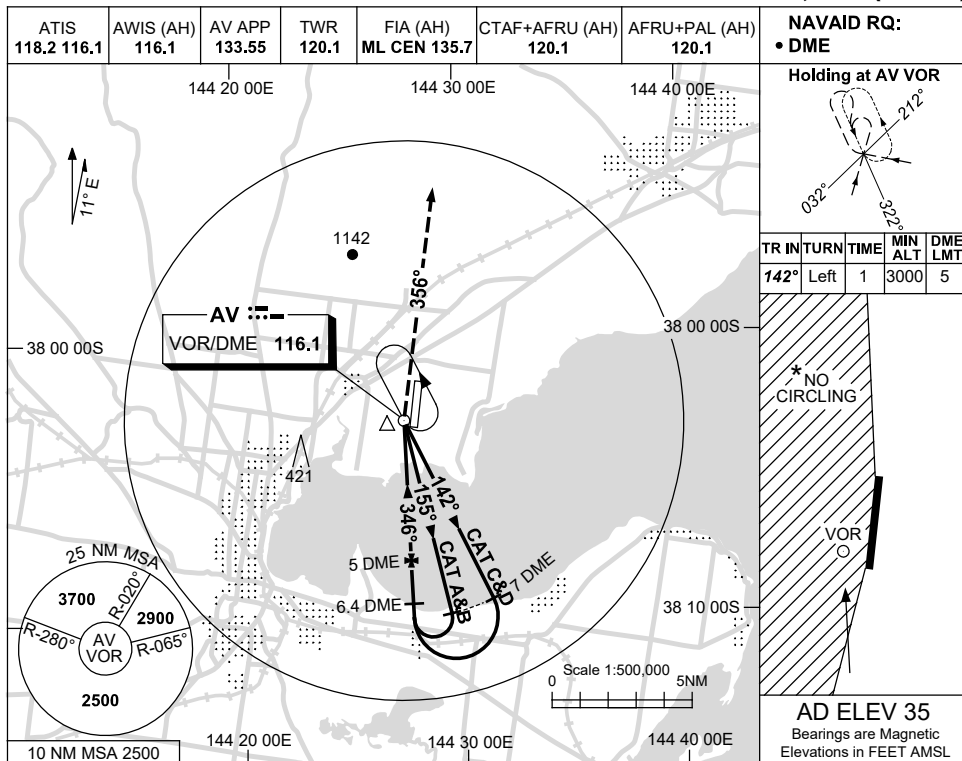
Changes: AWIS FREQ.

MAVVO01-170

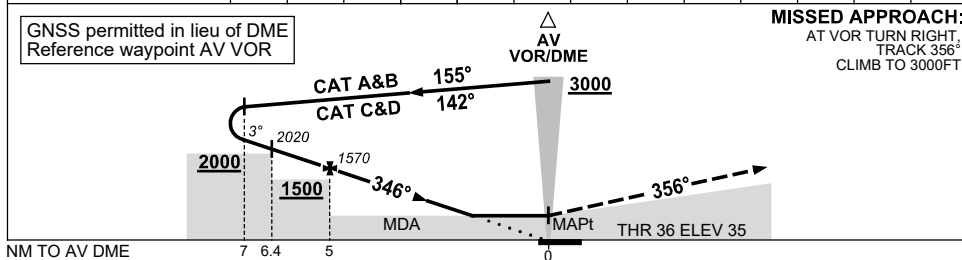
USE QNH

VOR RWY 36  
**AVALON, VIC (YMAV)**

24 MAR 2022



DIST TO AV DME	7	6.4	6	5	4	3	2	1.8				
ALT (3° APCH PATH)	2210	2020	1890	1570	1250	930	610	570				



CATEGORY	A	B	C	D
S-I VOR/DME	570 (535-3.0)			
CIRCLING *	660 (625-2.4)	760 (725-4.0)	830 (795-5.0)	
ALTERNATE	(1125-4.4)	(1225-6.0)	(1295-7.0)	

- NOTES**
- MAX IAS:  
INITIAL : 200KT.
  - NO CIRCLING WEST OF RWY 18/36.
  - HLDG PATTERN NOT CONTAINED WITHIN CTA.

Changes: AWIS FREQ.

MAVVO03-170