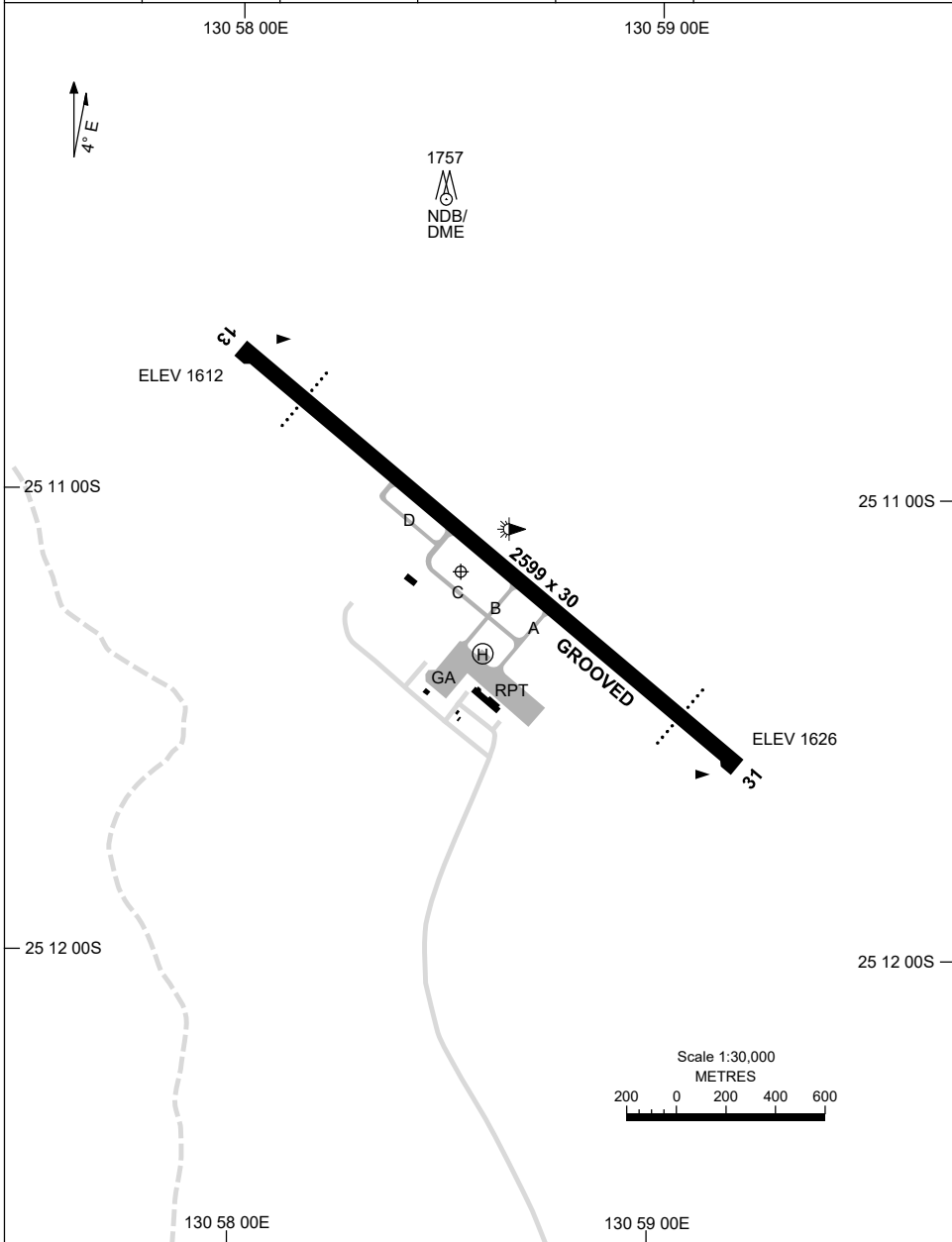


AAIS/AWIS (AH) 126.55	FIA ML CEN 121.85	CTAF+AFRU 126.9	CA/GRS * 126.9	AFRU+PAL 126.9	Bearings are Magnetic Elevations in FEET AMSL
--------------------------	----------------------	--------------------	-------------------	-------------------	--



Changes: AFRU+PAL.

AYEAD01-168

15 JUN 2023

AD ELEV 1626  
25 11 10S 130 58 32E

AERODROME CHART - Page 2  
**AYERS ROCK/CONNELLAN, NT (YAYE)**

AAIS/AWIS (AH) 126.55	FIA ML CEN 121.85	CTAF+AFRU 126.9	CA/GRS * 126.9	AFRU+PAL 126.9	Bearings are Magnetic Elevations in FEET AMSL
<b>RWY</b>	<b>AERODROME LIGHTING</b>				
	TAXIWAY : BLUE EDGE ON TWY A AND TWY C RL : AFRU+PAL 126.9 , SDBY				
13 <sup>126</sup> 306 <b>31</b>	PAPI BOTH SIDES 3.0° 54FT LIRL PAPI BOTH SIDES 3.0° 54FT LIRL				

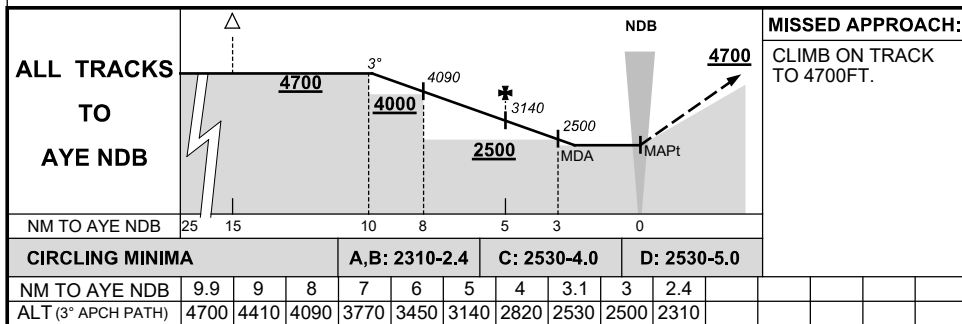
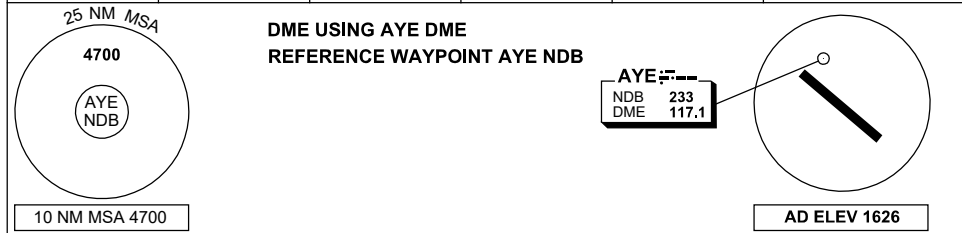
**NOTES**

\* 1. DURING RPT OPS AS ADVISED ON AAIS.

## DME or GNSS ARRIVAL PROCEDURES AYERS ROCK/CONNELLAN, NT (YAYE)

9 SEP 2021

AAIS/AWIS (AH) <b>126.55</b>	FIA <b>ML CEN 121.85</b>	CTAF+AFRU <b>126.9</b>	CA/GRS <b>126.9</b>	AFRU+PAL <b>126.9</b>	Bearings are Magnetic Elevations in FEET AMSL
---------------------------------	-----------------------------	---------------------------	------------------------	--------------------------	--

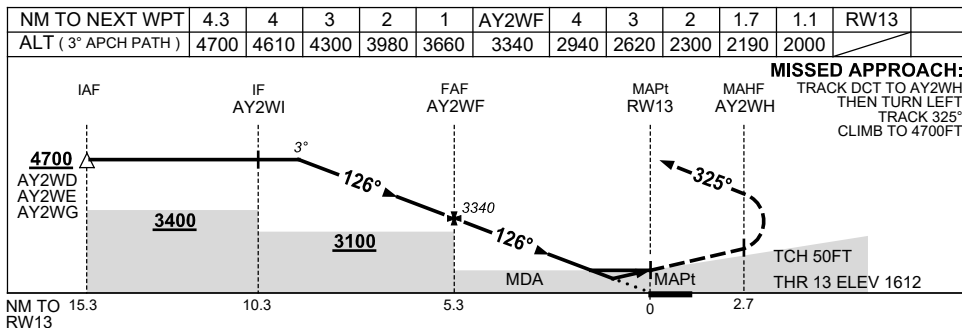
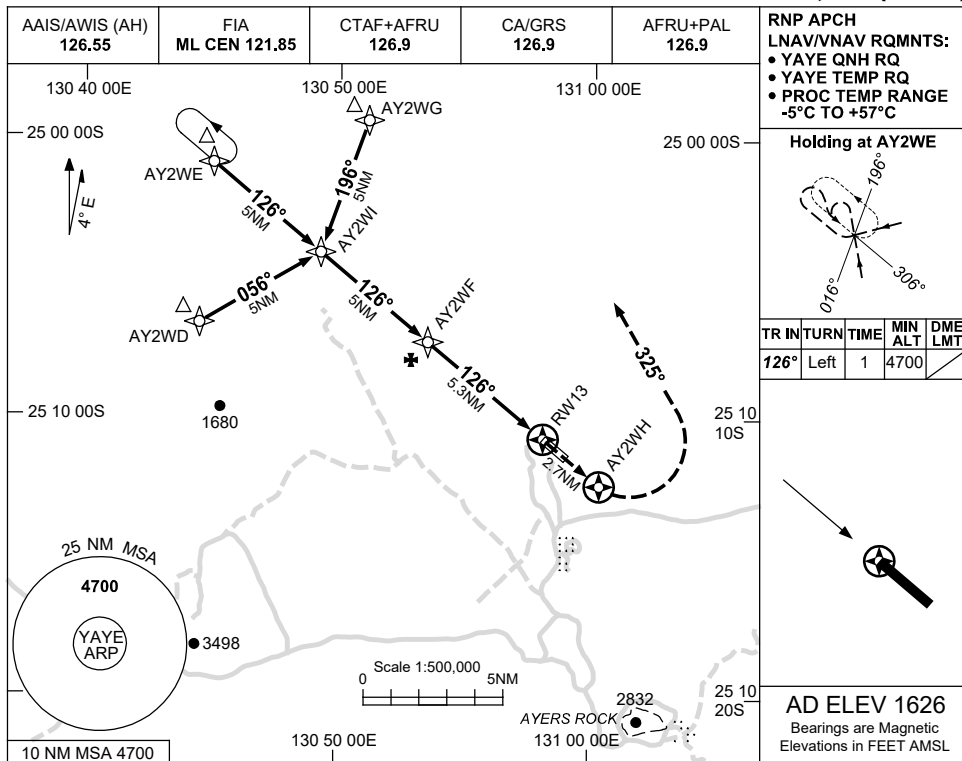


USE QNH

RNP RWY 13

1 DEC 2022

**AYERS ROCK/CONNELLAN, NT (YAYE)**



**NOTES**

1. MAX IAS:  
INITIAL : 210KT.

CATEGORY	A	B	C	D
LNAV/VNAV		<b>2000</b> (388-2.2)		
LNAV		<b>2190</b> (578-3.3)		
CIRCLING	<b>2300</b> (674-2.4)		<b>2530</b> (904-4.0)	<b>2530</b> (904-5.0)
ALTERNATE	(1174-4.4)		(1404-6.0)	(1404-7.0)

Changes: CHART TITLE, PBN SPECIFICATION BOX.

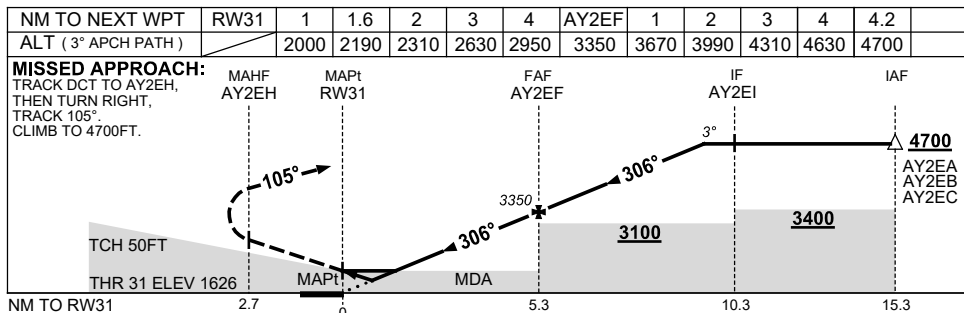
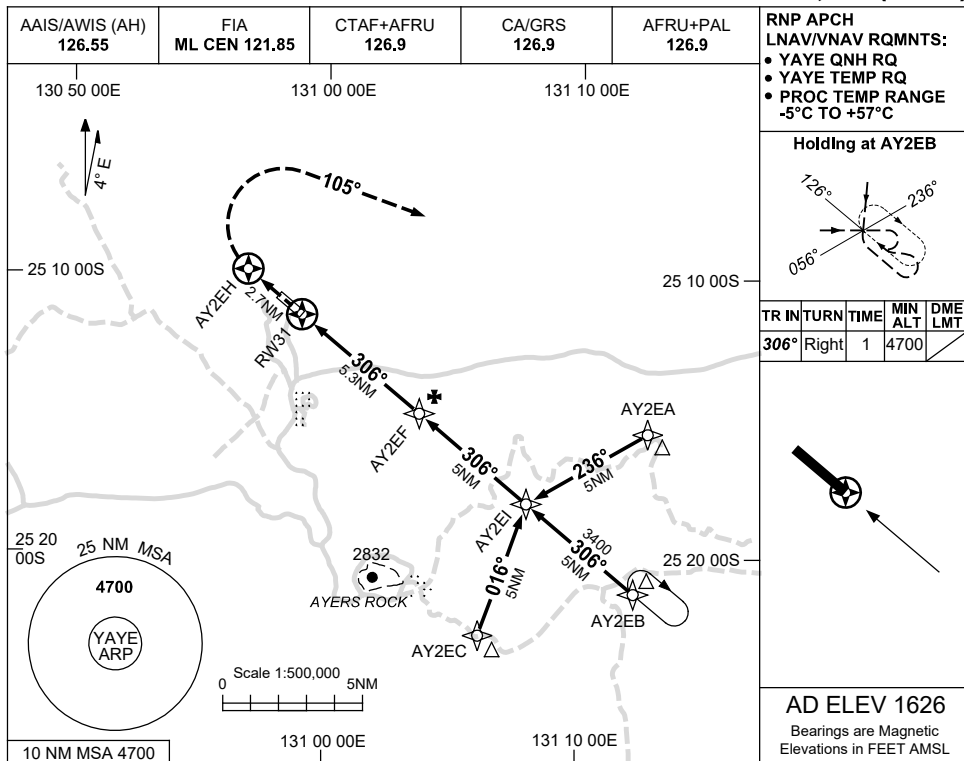
AYEGN01-173

USE QNH

RNP RWY 31

1 DEC 2022

**AYERS ROCK/CONNELLAN, NT (YAYE)**



**NOTES**

1. MAX IAS: INITIAL : 210KT.

CATEGORY	A	B	C	D
LNAV/VNAV		2000 (374-2.1)		
LNAV		2190 (564-3.2)		
CIRCLING	2300 (674-2.4)		2530 (904-4.0)	2530 (904-5.0)
ALTERNATE	(1174-4.4)		(1404-6.0)	(1404-7.0)

Changes: CHART TITLE, PBN SPECIFICATION BOX.

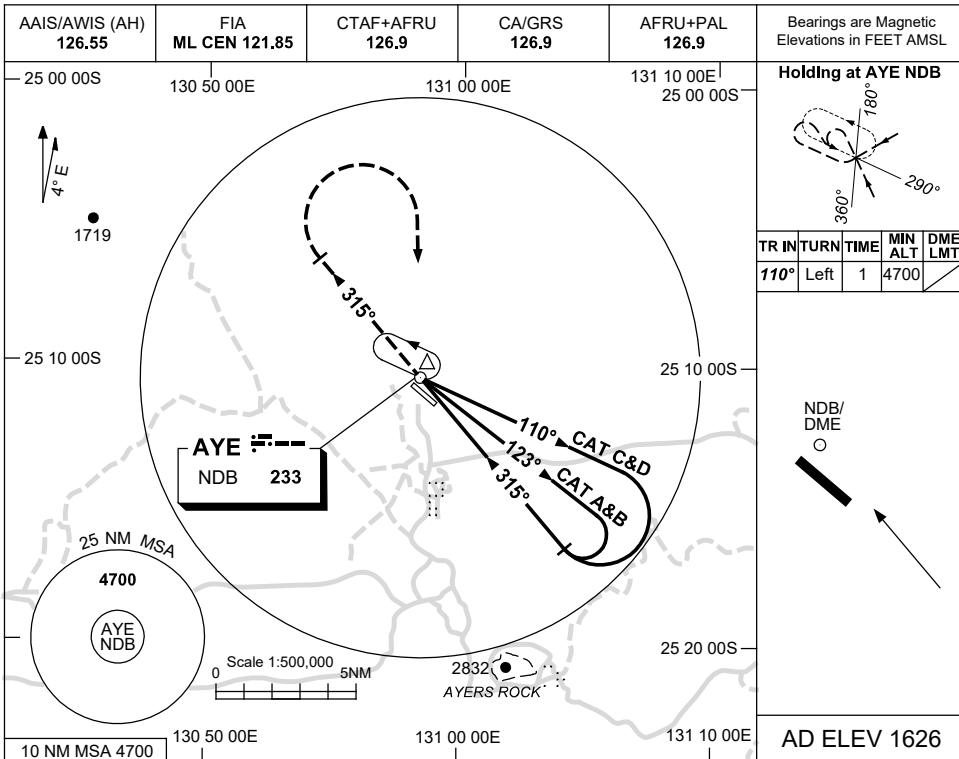
AYEGN02-173

USE QNH

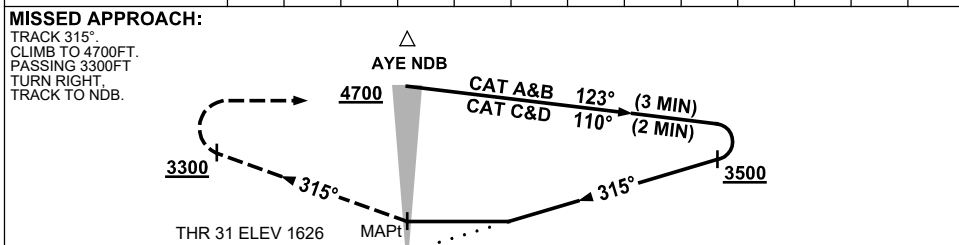
NDB-Y RWY 31

9 SEP 2021

AYERS ROCK/CONNELLAN, NT (YAYE)



DIST BY DME	NOT APPLICABLE									
ALT										



**NOTES**

CATEGORY	A	B	C	D
S-I NDB	<b>2300 (674-3.8)</b>			
CIRCLING	<b>2300 (674-2.4)</b>	<b>2530 (904-4.0)</b>	<b>2530 (904-5.0)</b>	
ALTERNATE	<b>(1174-4.4)</b>	<b>(1404-6.0)</b>	<b>(1404-7.0)</b>	

- MAX IAS:  
 INITIAL :  
 CAT A&B 140KT.  
 CAT C&D 210KT.

Changes: AFRU+PAL.

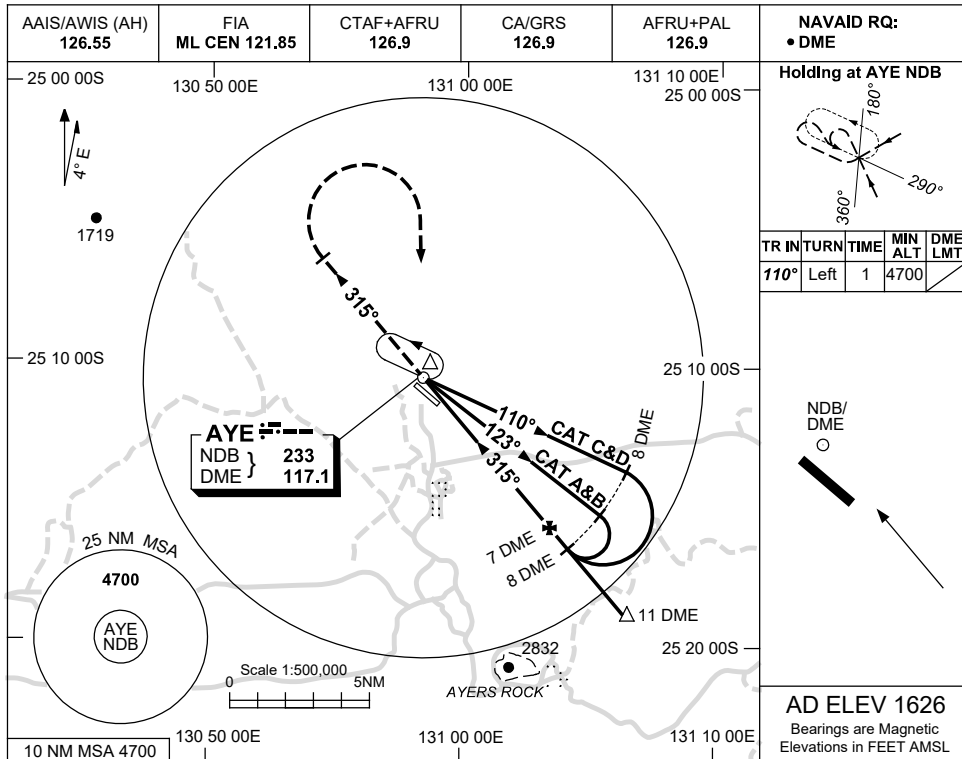
AYENB01-168

USE QNH

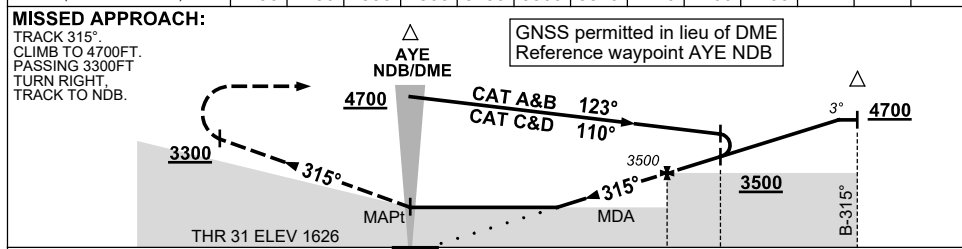
NDB-Z RWY 31

9 SEP 2021

AYERS ROCK/CONNELLAN, NT (YAYE)



DIST BY DME	2.9	3	4	5	6	7	8	9	10	10.8		
ALT (3° APCH PATH)	2190	2230	2550	2860	3180	3500	3820	4140	4460	4700		



NM TO AYE DME		0	1.3		7	8		11	
NM TO RWY THR 31		1.3	0		5.7	6.7		9.7	

**NOTES**

- MAX IAS:  
INITIAL :  
CAT A&B 140KT.  
CAT C&D 210KT.

CATEGORY	A	B	C	D
S-I NDB/DME	2190 (564-3.2)			
CIRCLING	2300 (674-2.4)	2530 (904-4.0)	2530 (904-5.0)	
ALTERNATE	(1174-4.4)	(1404-6.0)	(1404-7.0)	

Changes: AFRU+PAL.

AYENB02-168