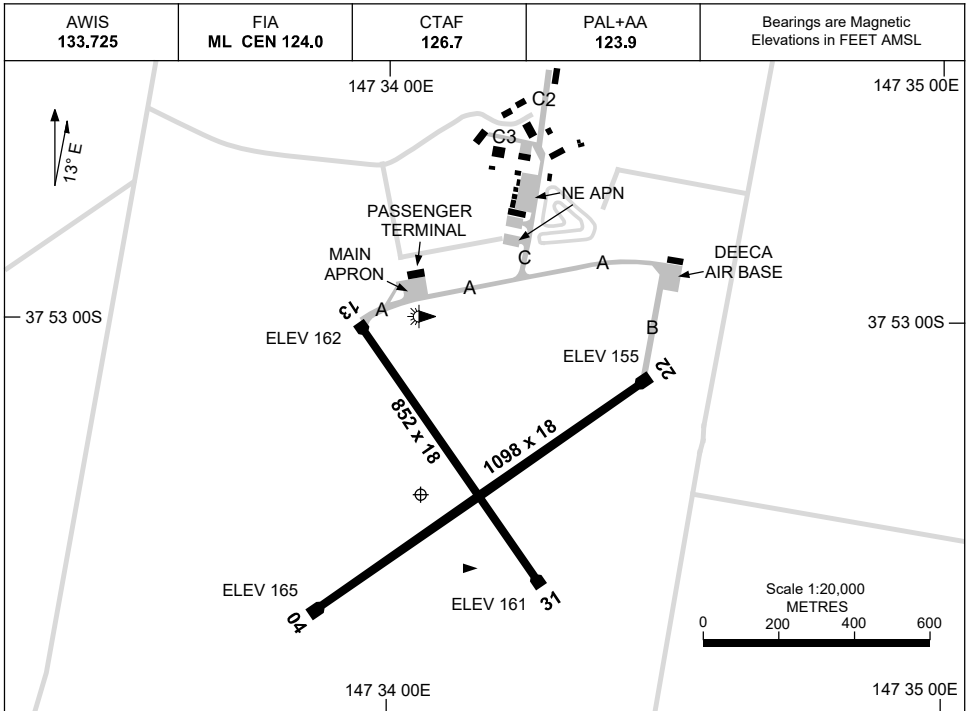


7 SEP 2023

AD ELEV 165  
37 53 15S 147 34 04E

AERODROME CHART  
**BAIRNSDALE, VIC (YBNS)**



	<b>AERODROME LIGHTING</b>	
<b>RWY</b>	TAXIWAY : BLUE EDGE , ACTIVATION BY PAL 123.9 RL : PAL+AA 123.9 , SDBY (5 SEC)	
<b>04</b> <small>042</small>	LIRL	
<small>222</small> <b>22</b>	LIRL	
<b>13</b> <small>132</small>	NIL	
<small>312</small> <b>31</b>	NIL	

**NOTES**

1. AWIS RQ ONE-SECOND PULSE TO ACTIVATE. AWIS WILL TRANSMIT FOR 90 SEC.

Changes: RWY 04 AND RWY 13 THR ELEV.

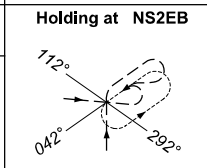
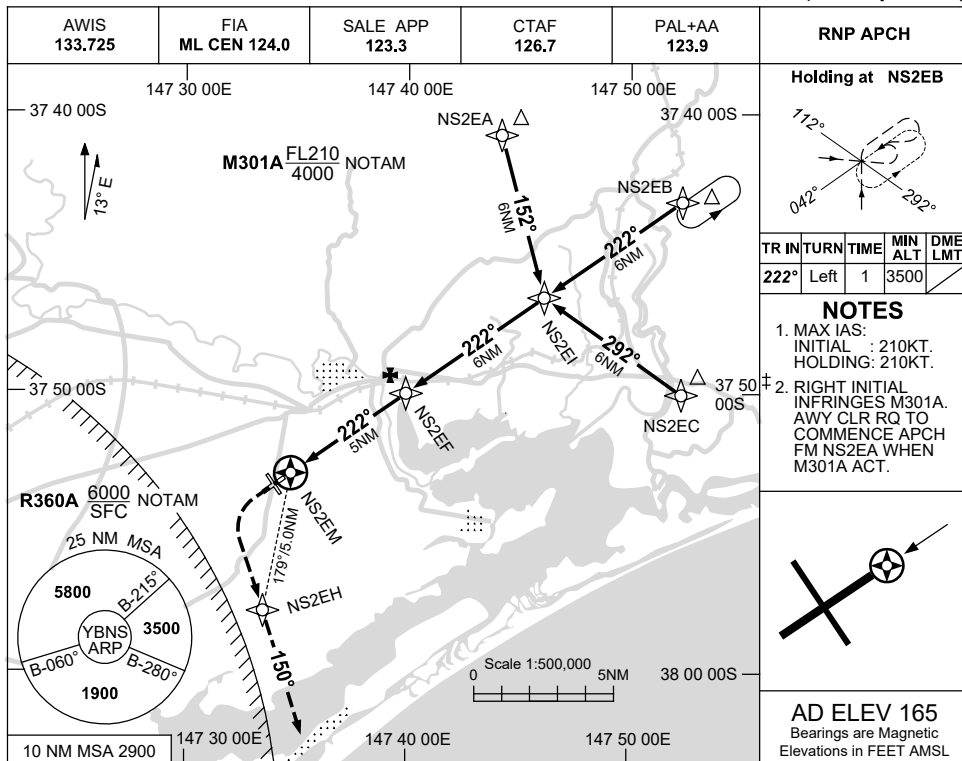
BNSAD01-176

USE QNH

RNP RWY 22

**BAIRNSDALE, VIC (YBNS)**

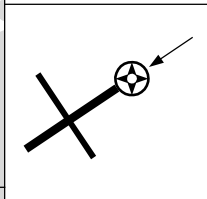
21 MAR 2024



TR	IN	TURN	TIME	MIN ALT	DME LMT
222°	Left	1	3500		

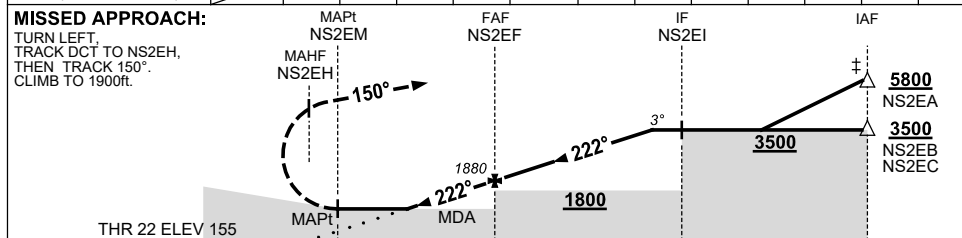
**NOTES**

- MAX IAS:  
INITIAL : 210KT.  
HOLDING: 210KT.
- RIGHT INITIAL INFRINGES M301A. AWY CLR RQ TO COMMENCE APCH FM NS2EA WHEN M301A ACT.



**AD ELEV 165**  
Bearings are Magnetic  
Elevations in FEET AMSL

NM TO NEXT WPT	NS2EM	1.2	2	3	4	NS2EF	1	2	3	4	5.1		
ALT (3° APCH PATH)	680	930	1250	1560	1880	2200	2520	2840	3160	3500			



NM TO NS2EM: 0.3, 5, 11, 17

**NOTES**

- WHEN EAST SALE R AREAS ACTIVE, COM RQ WITH ES APP PRIOR TO COMMENCEMENT OF PROC.
- YMS RNP RWY 22 AND RAAF KELAN HLDG PATTERNS OVERLAY PROC AT 4500FT AND 3500FT.

CATEGORY	A	B	C	D
LNAV	680 (525-3.0)			NOT APPLICABLE
CIRCLING	860 (695-2.4)	960 (795-4.0)		
ALTERNATE	(1195-4.4)	(1295-6.0)		

Changes: GLIDING SYMBOL REMOVED, Editorial.

BNSGN01-178