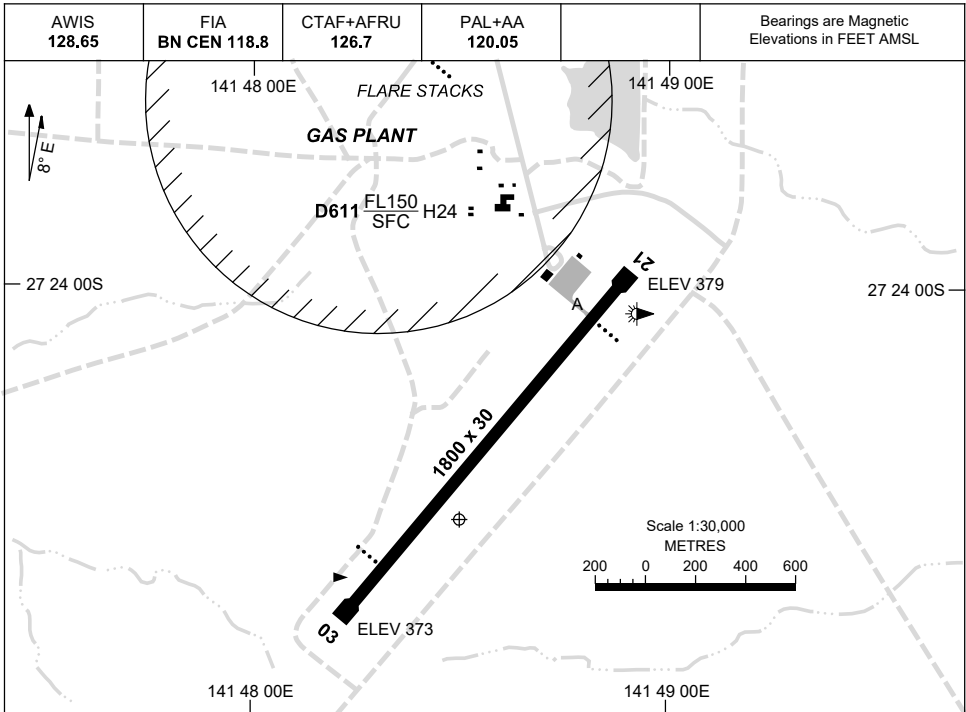


13 JUN 2024

AD ELEV 385
27 24 30S 141 48 30E

AERODROME CHART
BALLERA, QLD (YLLE)



	AERODROME LIGHTING
RWY	TAXIWAY : BLUE EDGE RL : PAL+AA 120.05 , SDBY, (MANUAL ACT. 45 MIN PN) PTBL (EMERG ONLY, 60 MIN PN)
03 <small>032</small>	PAPI 3.0° 48FT LIRL PTBL
<small>212</small> 21	PAPI 3.0° 48FT LIRL PTBL

NOTES

1. FIA FREQ AVBL IN CIRCUIT AREA.
2. ALL OPS - ADVISE ADO 20MIN PN ON 126.4.

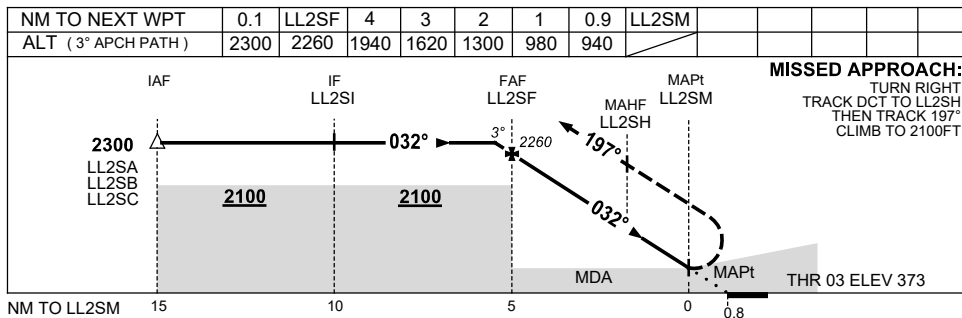
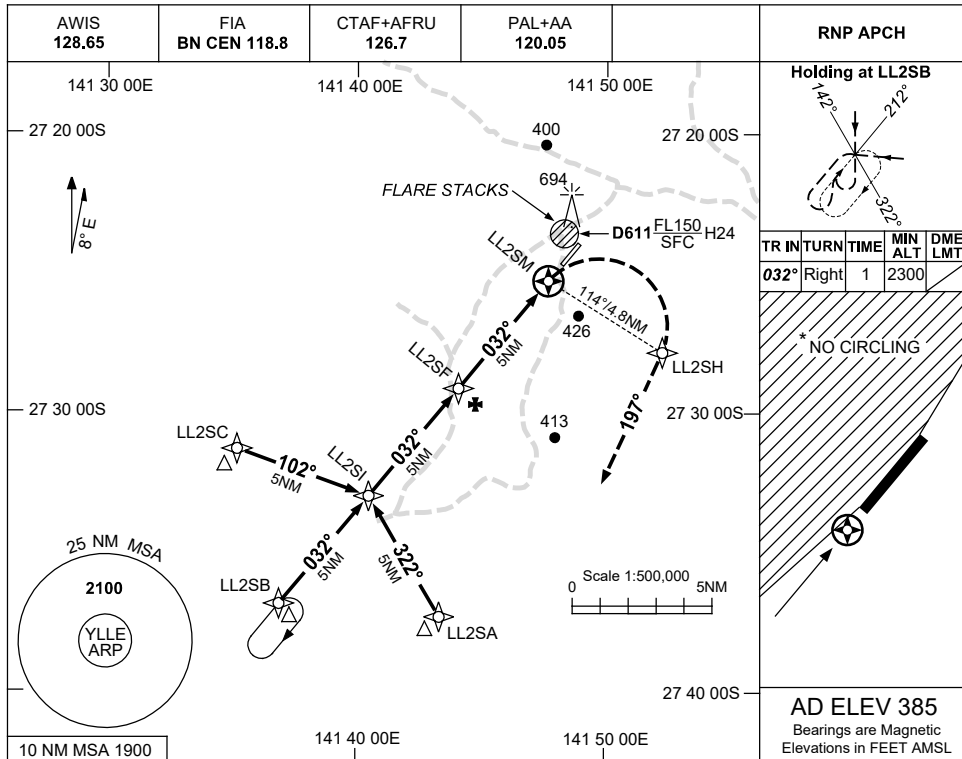
Changes: Editorial.

LLEAD01-179

USE QNH

RNP RWY 03
BALLERA, QLD (YLLE)

13 JUN 2024



NOTES

CATEGORY	A	B	C	D
LNAV	940 (567-3.2)			NOT APPLICABLE
CIRCLING *	990 (605-2.4)		1090 (705-4.0)	
ALTERNATE	(1105-4.4)		(1205-6.0)	

- MAX IAS:
INITIAL : 210KT.
MISSED APCH
TURN : 200KT.
- NO CIRCLING WEST OF RWY 03/21.

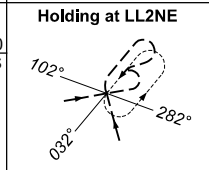
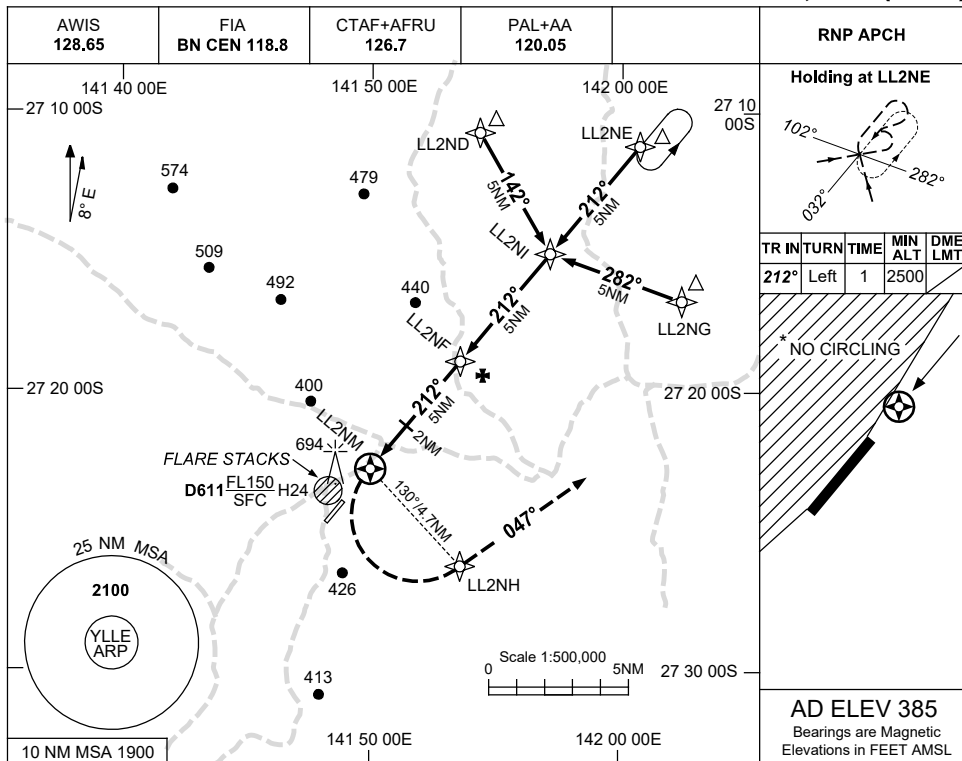
Changes: WAYPOINT NAMES, 694FT OBST, Editorial.

LLEGN01-179

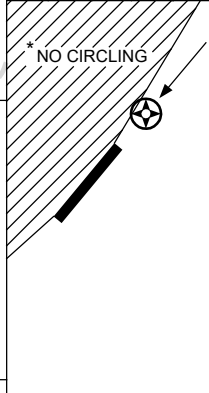
USE QNH

RNP RWY 21
BALLERA, QLD (YLLE)

13 JUN 2024

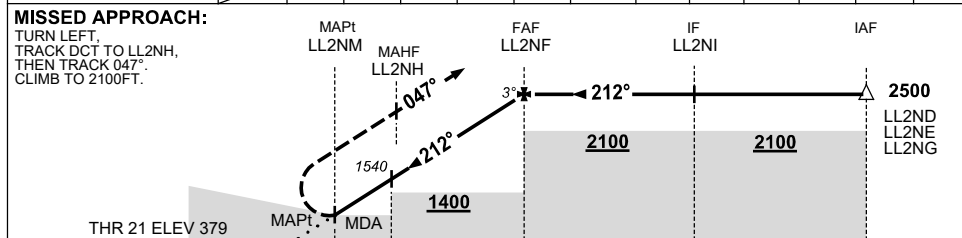


TR	IN	TURN	TIME	MIN ALT	DME LMT
212°	Left	1		2500	



AD ELEV 385
Bearings are Magnetic
Elevations in FEET AMSL

NM TO NEXT WPT	LL2NM	0.1	1	2	3	4	LL2NF				
ALT (3° APCH PATH)		950	1220	1540	1860	2180	2500				



NM TO LL2NM: 1.5, 0, 2, 5, 10, 15

NOTES

CATEGORY	A	B	C	D
LNAV	950 (565-3.2)			NOT APPLICABLE
CIRCLING *	990 (605-2.4)		1090 (705-4.0)	
ALTERNATE	(1105-4.4)		(1205-6.0)	

- MAX IAS:
INITIAL : 210KT.
MISSED APCH : 200KT.
TURN
- NO CIRCLING WEST OF RWY 03/21.

Changes: LNAV MINIMA, WAYPOINT NAMES, SEGMENT MINIMA, 694FT OBST, Editorial.

LLEGN02-179