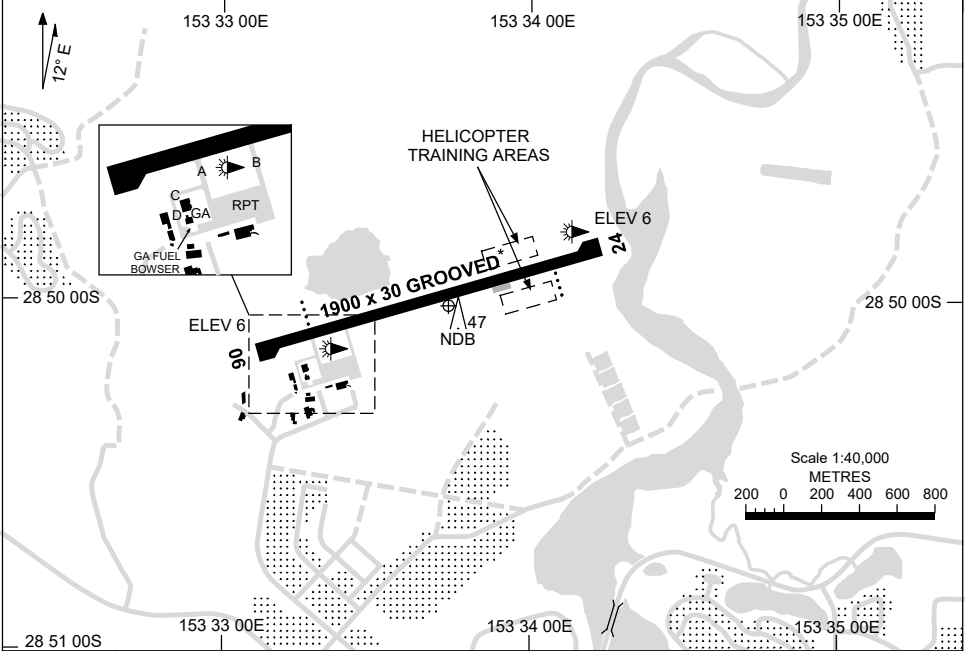


5 SEP 2024

AD ELEV 7  
28 50 02S 153 33 45E

**AERODROME CHART**  
**BALLINA/BYRON GATEWAY, NSW (YBNA)**

AWIS 134.8	FIA BN CEN 120.3	SFIS 124.2	CTAF+AFRU 124.2	PAL+AA 121.3		Bearings are Magnetic Elevations in FEET AMSL
---------------	---------------------	---------------	--------------------	-----------------	--	--



RWY		AERODROME LIGHTING	
		TAXIWAY : BLUE EDGE, RGL	
		RL : PAL+AA 121.3 , SDBY (15 SEC)	
<b>06</b> <sup>062</sup>		PAPI 3.0° 53FT MIRL RTIL	
<sup>242</sup> <b>24</b>		PAPI 3.0° 53FT MIRL RTIL	

**NOTES**

- BN CEN FIA 120.3 AVBL IN CIRCUIT AREA. FOR ON GROUND COM USE BN CEN 126.05
- PAL OPERATES PAPI AND RTIL HJ. PAL OPERATES PAPI, RTIL AND MIRL DURING ADVERSE WEATHER CONDITIONS HJ.
- \*3. RWY GROOVED - 30M WIDE.

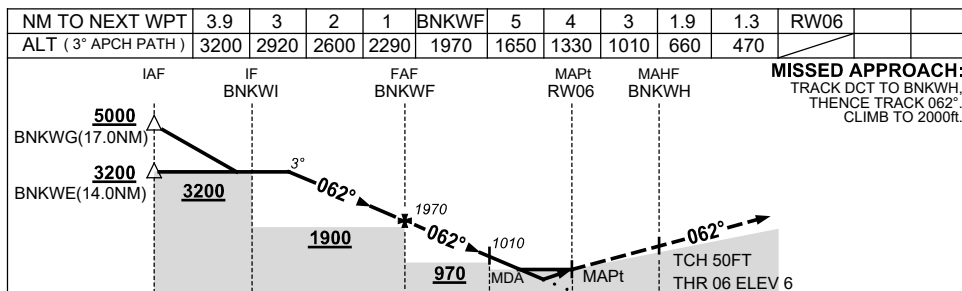
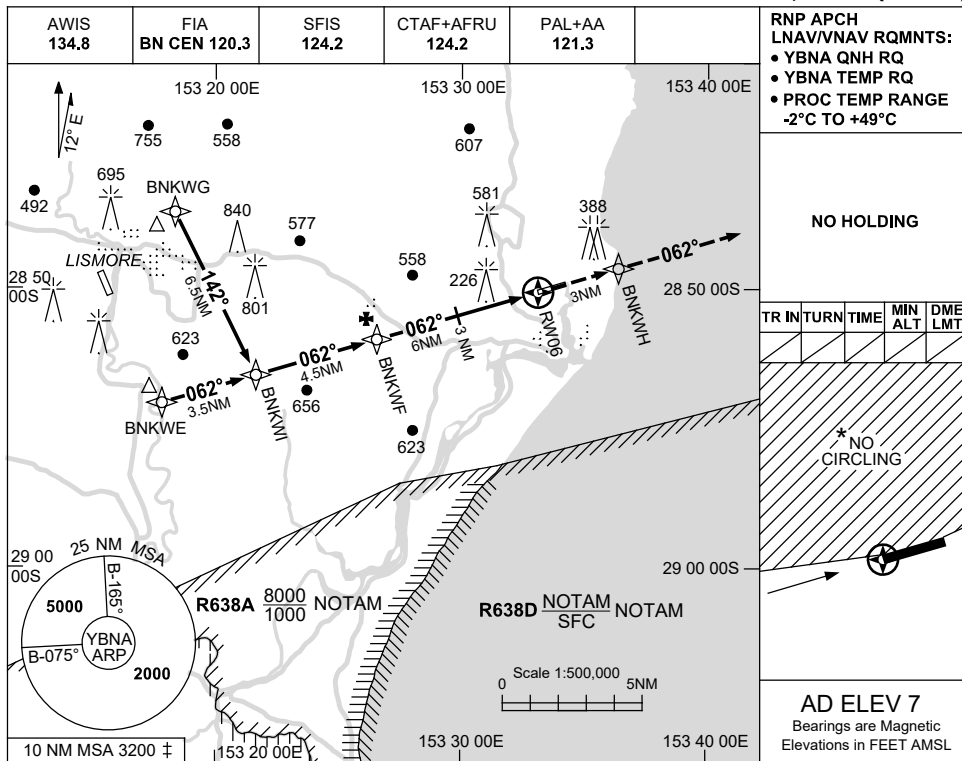
Changes: PAPI REPLACES AT VASIS, MIRL, Editorial.

BNAAD01-180

**USE QNH**  
**BALLINA/BYRON GATEWAY, NSW (YBNA)**

RNP Z RWY 06

21 MAR 2024



- MAX IAS:  
INITIAL : 210KT.
- 10 NM MSA IS A COMBINED AREA FOR YBNA, YLIS.
- NO CIRCLING NTH OF RWY 06/24.
- CAUTION:**  
PROC OVERLAYS LISMORE PROCS.

CATEGORY	A	B	C	D
LNAV/VNAV		470 (464-2.6)		NOT APPLICABLE
LNAV		660 (653-3.7)		
CIRCLING *	790 (783-2.4)		1030 (1023-4.0)	
ALTERNATE	(1283-4.4)		(1523-6.0)	

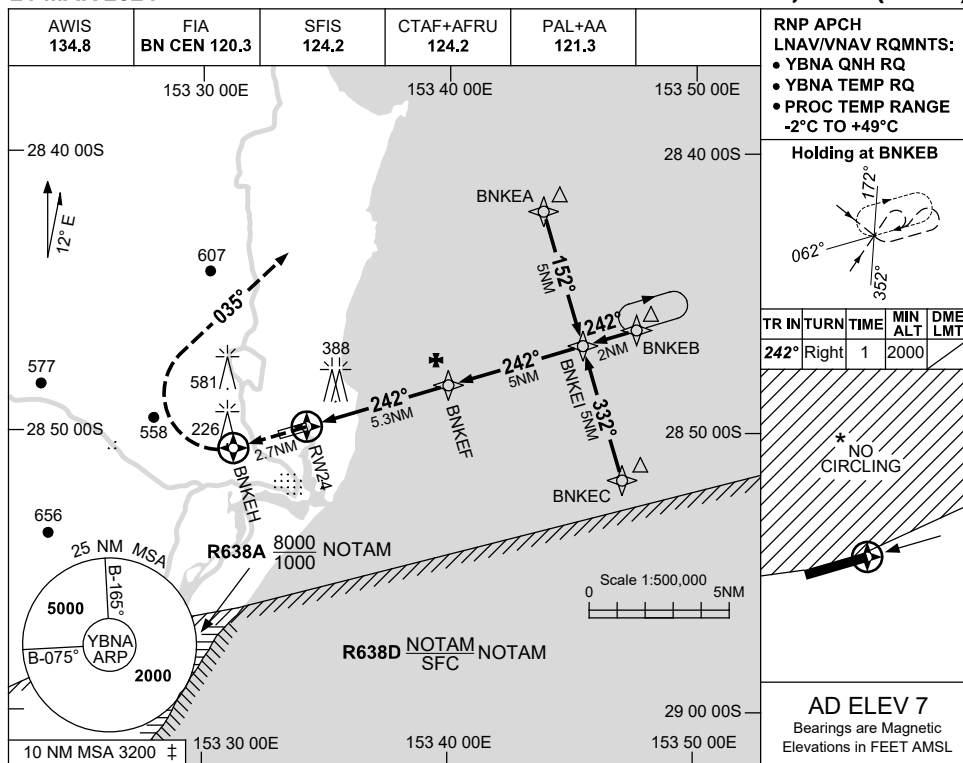
Changes: HANG GLIDER SYMBOL REMOVED, Editorial.

BNAGN01-178

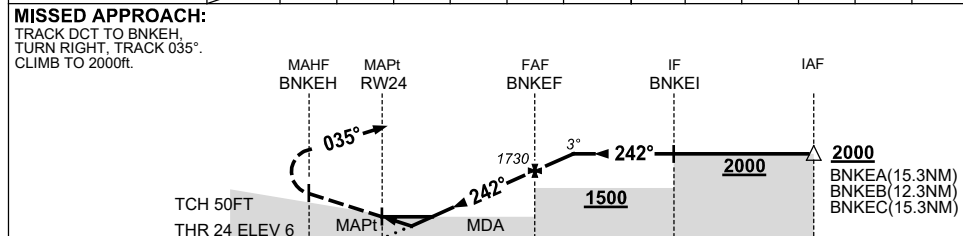
**USE QNH**  
**BALLINA/BYRON GATEWAY, NSW (YBNA)**

RNP Z RWY 24

21 MAR 2024



NM TO NEXT WPT	RW24	1.3	1.9	2	3	4	BNKEF	0.8			
ALT (3° APCH PATH)		470	660	690	1010	1330	1730	2000			



**NOTES**

CATEGORY	A	B	C	D
LNAV/VNAV		470 (464-2.6)		NOT APPLICABLE
LNAV		660 (653-3.7)		
CIRCLING *	790 (783-2.4)		1030(1023-4.0)	
ALTERNATE	(1283-4.4)		(1523-6.0)	

1. MAX IAS:  
HOLDING : 210KT.  
INITIAL : 210KT.
- \* 2. NO CIRCLING NTH OF RWY 06/24.
- ‡ 3. 10 NM MSA IS A COMBINED AREA FOR YBNA, YLIS.

Changes: HANG GLIDER SYMBOL REMOVED, Editorial.

BNAGN02-178

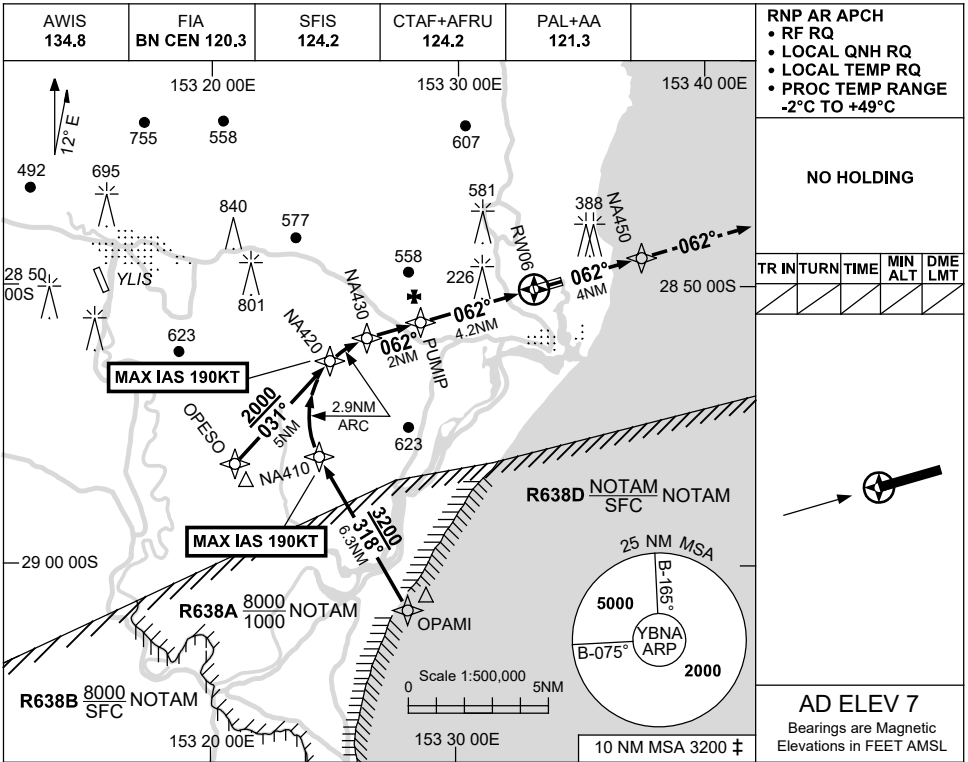
FOR CASA APPROVED OPERATORS ONLY

USE QNH

RNP X RWY 06 (AR)

**BALLINA/BYRON GATEWAY, NSW (YBNA)**

5 SEP 2024



NO HOLDING

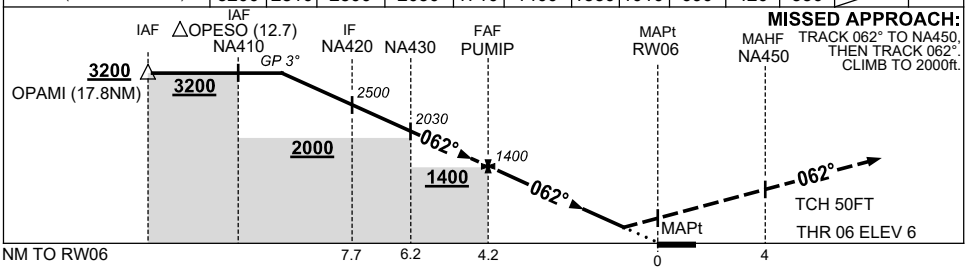
TR	IN	TURN	TIME	MIN ALT	DME LMT



AD ELEV 7

Bearings are Magnetic  
Elevations in FEET AMSL

NM TO NEXT WPT	2.2	1	NA420	NA430	1	PUMIP	4	3	2	1.1	0.9	RWY06
ALT (3° APCH PATH)	3200	2810	2500	2030	1710	1400	1330	1010	690	420	350	



**NOTES**

1. MAX IAS: RF TURN : 190KT.
2. 10 NM MSA IS A COMBINED AREA FOR YBNA, YLIS.
3. CAUTION: INITIAL SEGMENTS OVERLAY YLIS RNP RWY 33 PROC.

CATEGORY	A	B	C	D
RNP (0.3)		420 (414-2.3)		NOT AUTHORISED
RNP (0.1)		350 (344-1.9)		
CIRCLING	NOT AUTHORISED			
ALTERNATE	(1203-4.4)		(1423-6.0)	

Changes: Editorial.

BNAGN03-180

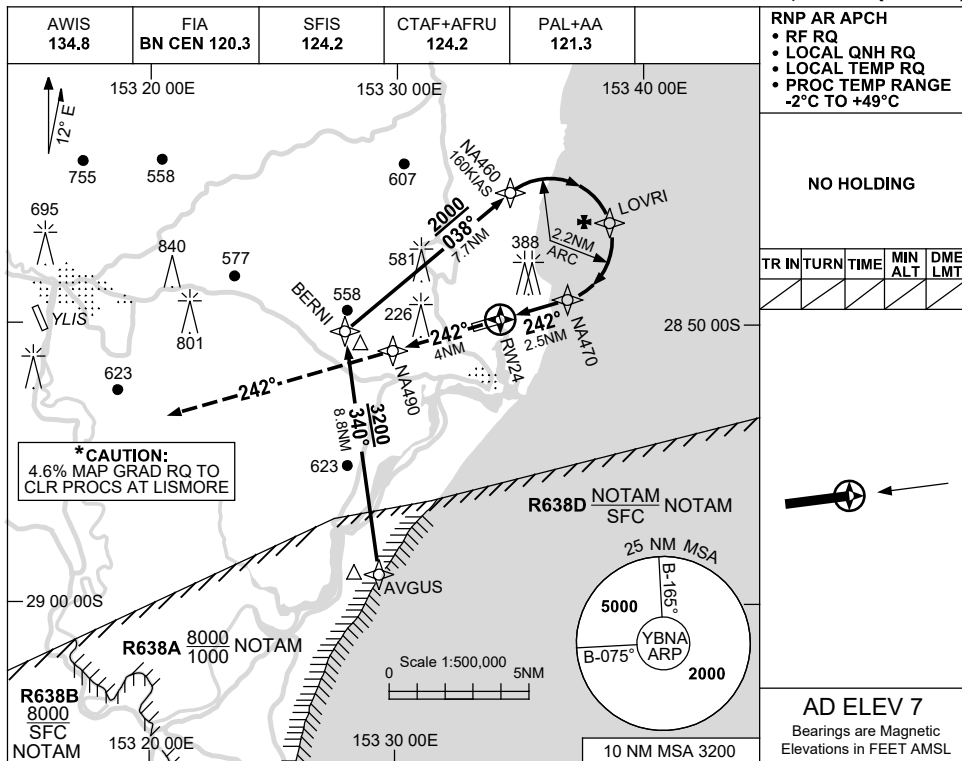
FOR CASA APPROVED OPERATORS ONLY

USE QNH

RNP X RWY 24 (AR)

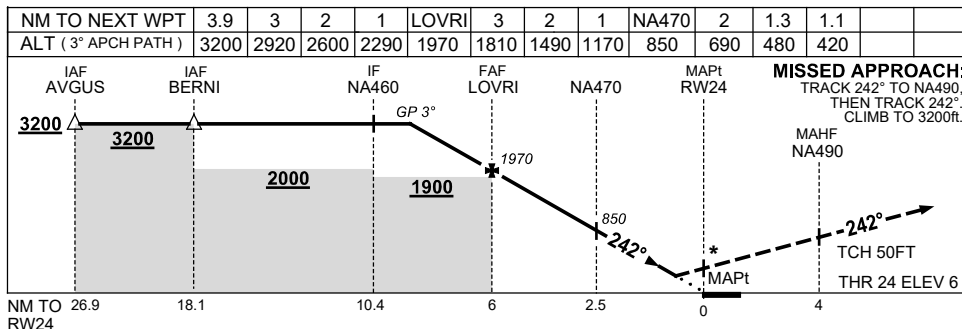
BALLINA/BYRON GATEWAY, NSW (YBNA)

5 SEP 2024



NO HOLDING						
TR	IN	TURN	TIME	MIN	DME	LMT

**AD ELEV 7**  
Bearings are Magnetic  
Elevations in FEET AMSL



NOTES

CATEGORY	A	B	C	D
RNP (0.3)		480 (474-2.7)		NOT AUTHORISED
RNP (0.1)		420 (414-2.3)		
CIRCLING	NOT AUTHORISED			
ALTERNATE	(1203-4.4)		(1423-6.0)	

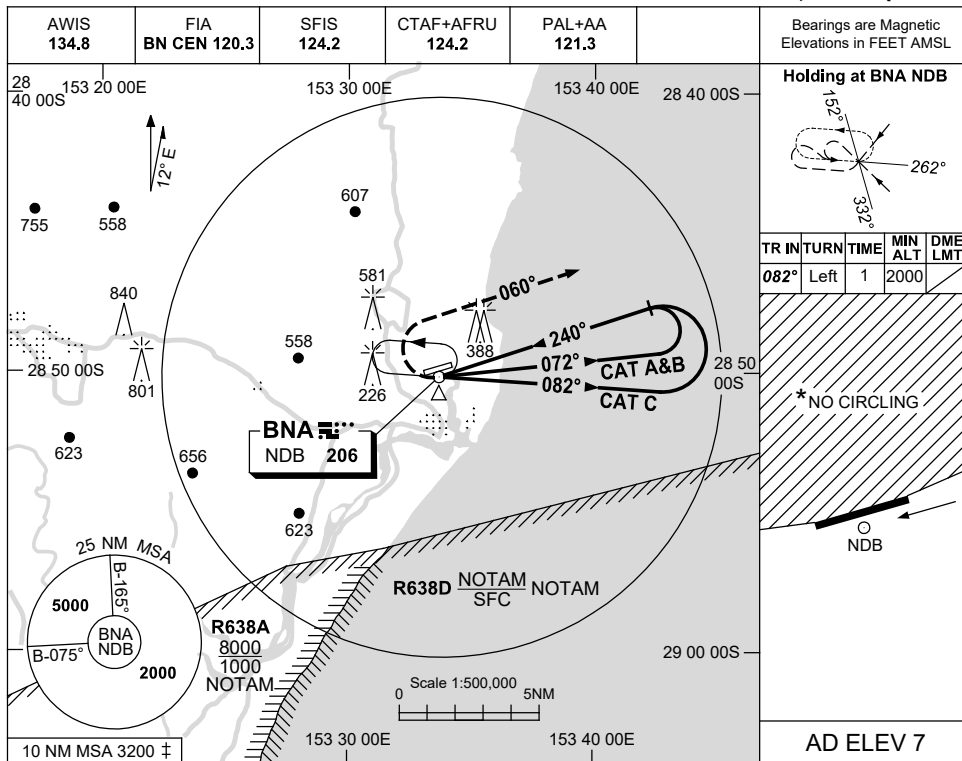
1. MAX IAS:  
RF TURN : 160KT.
- ±2. 10 NM MSA IS A  
COMBINED AREA  
FOR YBNA, YLIS.

Changes: Editorial.

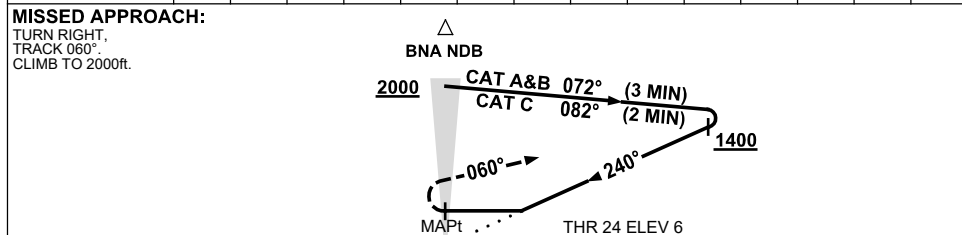
BNAGN04-180

**USE QNH**  
**NDB RWY 24**  
**BALLINA/BYRON GATEWAY, NSW (YBNA)**

**21 MAR 2024**



DME DIST	NOT APPLICABLE				
ALT					



**NOTES**

1. MAX IAS:  
HOLDING : 230KT.  
INITIAL : 210KT.  
MAP TURN: 180KT.
- \* 2. NO CIRCLING NTH OF RWY 06/24.
- ‡ 3. 10 NM MSA IS A COMBINED AREA FOR YBNA, YLIS.

CATEGORY	A	B	C	D
S-I NDB	<b>790 (783-4.5)</b>			<b>NOT APPLICABLE</b>
CIRCLING *	<b>790 (783-2.4)</b>	<b>1030 (1023-4.0)</b>		
ALTERNATE	<b>(1283-4.4)</b>		<b>(1523-6.0)</b>	

Changes: HANG GLIDER SYMBOL REMOVED, Editorial.

BNANB01-178