

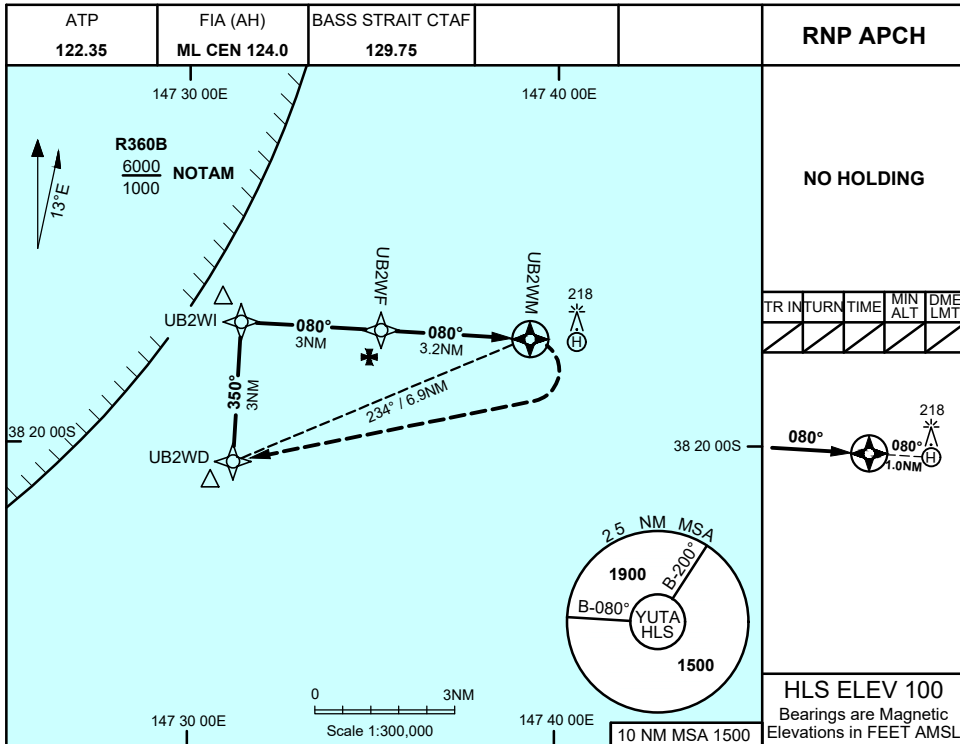
# FOR CASA APPROVED OPERATORS ONLY

USE QNH

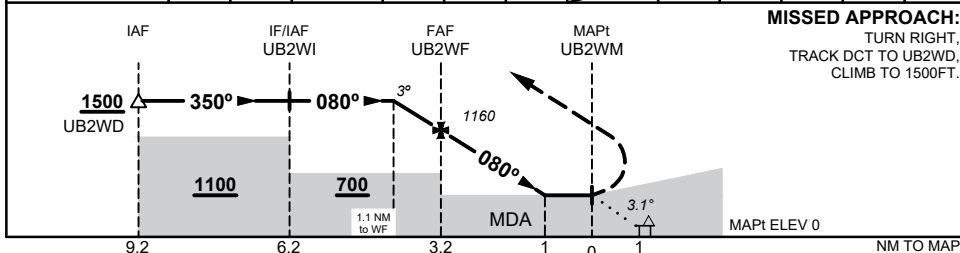
RNP 080

30 NOV 2023

## BARRACOUTA PLATFORM, VIC (YUTA)



NM TO NEXT WPT	1.1	1	UB2WF	3	2	1	UB2WM			
ALT (3° APCH PATH)	1500	1480	1160	1100	780	460				



### NOTES

1. MAX IAS:  
INITIAL, INTERMEDIATE: 120KT  
FINAL, MISSED APP: 90KT
2. KEY LEAD IN FEATURES:  
PLATFORM AT HLS
- \*3. MDH BASED ON MAPt ELEV

<b>CATEGORY</b>	<b>H</b>
LNAV (NON-VAA, 4.2% MAP), AREA QNH	<b>460 (460* - 1.9)</b>
ALTERNATE	N/A

Changes: R360B

UTAGN01-177

# FOR CASA APPROVED OPERATORS ONLY

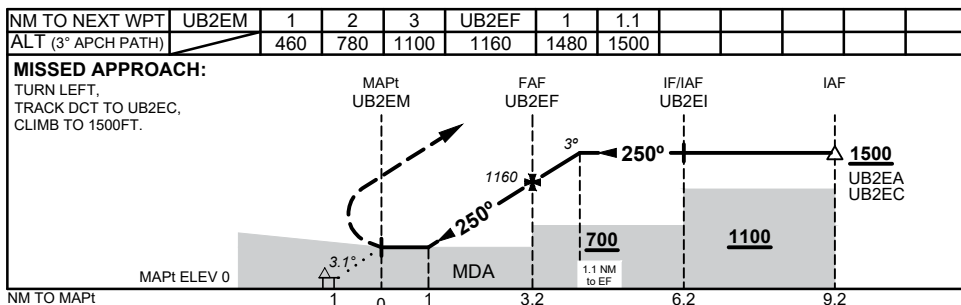
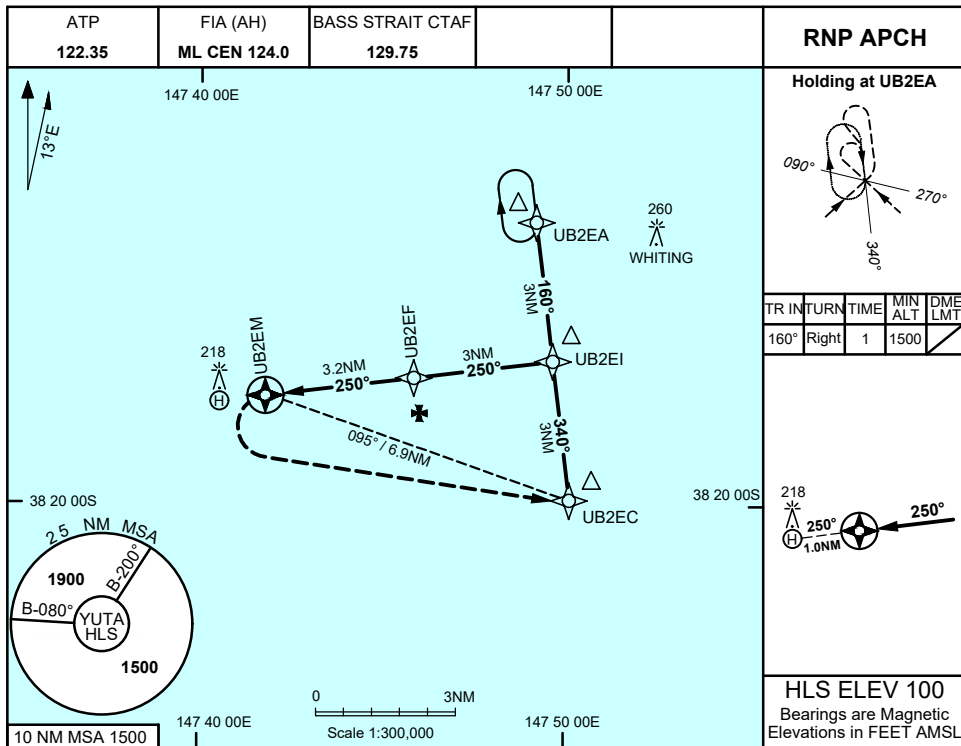
# FOR CASA APPROVED OPERATORS ONLY

USE QNH

RNP 250

7 SEP 2023

## BARRACOUTA PLATFORM, VIC (YUTA)



### NOTES

- MAX IAS:  
HOLDING: 120 KT  
INITIAL, INTERMEDIATE: 120KT  
FINAL, MISSED APP: 90KT
- KEY LEAD IN FEATURES:  
PLATFORM AT HLS
- \*3. MDH BASED ON MAPt ELEV

CATEGORY	H
LNAV (NON-VAA, 4.2% MAP), AREA QNH	<b>460</b> (460* - 1.9)
ALTERNATE	N/A

Changes: LONGITUDE

UTAGN02-176

# FOR CASA APPROVED OPERATORS ONLY