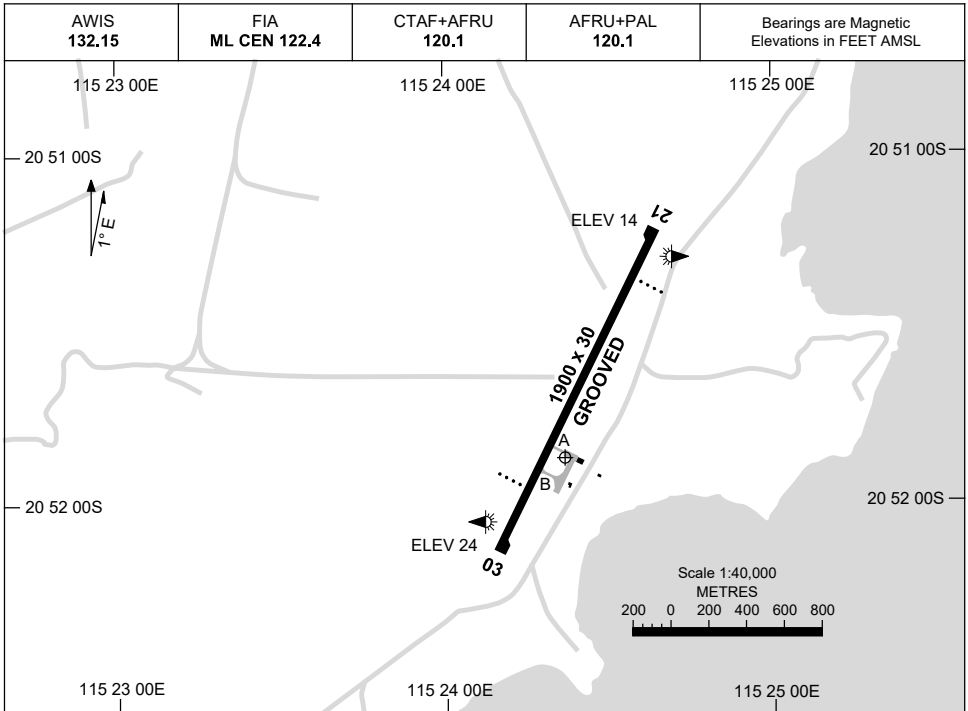


15 JUN 2023

AD ELEV 24
20 51 52S 115 24 22E

AERODROME CHART
BARROW ISLAND, WA (YBWX)



	AERODROME LIGHTING
RWY	TAXIWAY : BLUE EDGE ON TWY B RL : AFRU+PAL 120.1 , SDBY (25 SEC) , PTBL (90 MIN PN)
03 <small>026</small>	PAPI 3.0° 41FT LIRL
<small>206</small> 21	PAPI 3.0° 41FT LIRL

NOTES

1. FIA FREQ 122.4 AVBL 2,000FT.

Changes: NOTES.

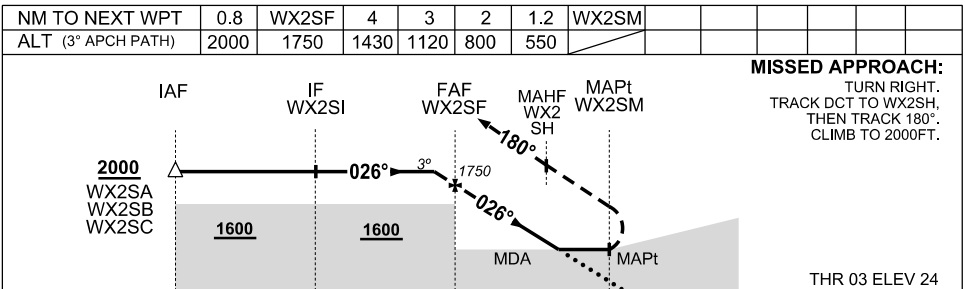
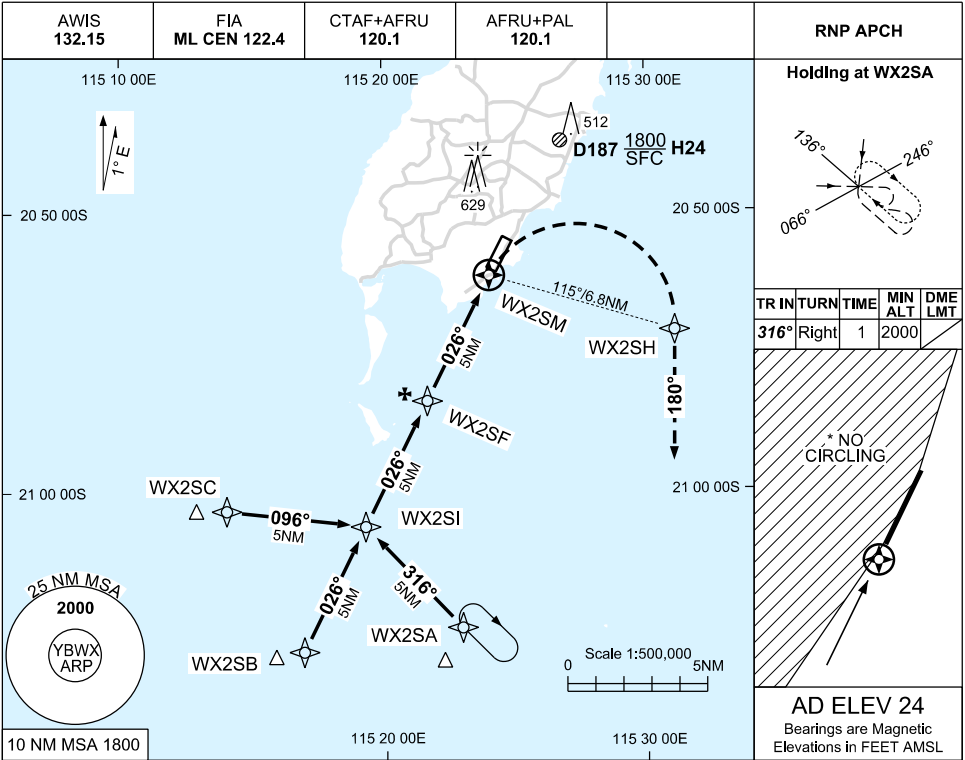
BWXAD01-175

USE QNH

RNP Z RWY 03

30 NOV 2023

BARROW ISLAND, WA (YBWX)



CATEGORY	A	B	C	D
LNAV	550 (526-3.0)			NOT AUTHORISED
CIRCLING *	630 (606-2.4)		NOT AUTHORISED	
ALTERNATE	(1106-4.4)		(1116-5.5)	

1. MAX IAS :
INITIAL: 210KT
MAP TURN: 210KT

*2. NO CIRCLING WEST OF RWY 03/21.

Changes: CHART TITLE, WPT IDENT, EDITORIAL

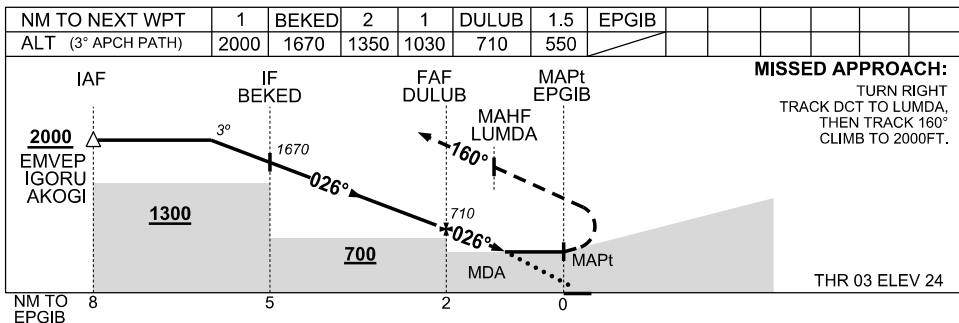
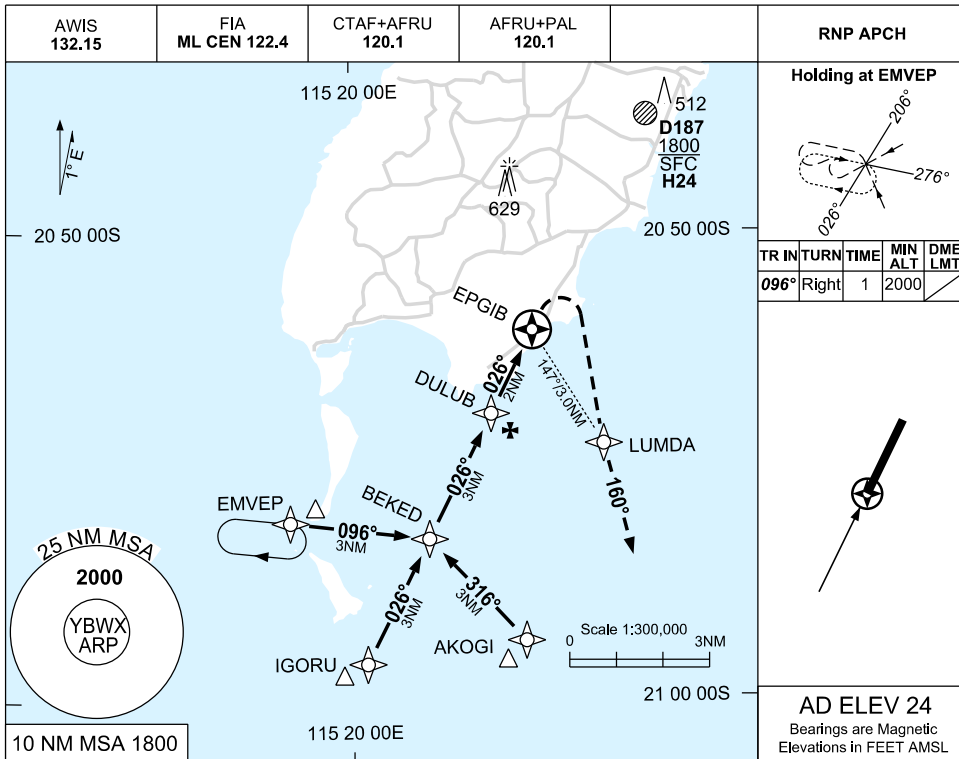
BWXGN02-177

USE QNH

RNP Y RWY 03

30 NOV 2023

BARROW ISLAND, WA (YBWX)



NOTES

CATEGORY	H
LNAV (NON VAA)	550 (526-3.0)
CIRCLING	NOT APPLICABLE
ALTERNATE	(1106-5.4)

1. MAX IAS:
HOLDING: 100KT.

Changes: CHART TITLE, EDITORIAL

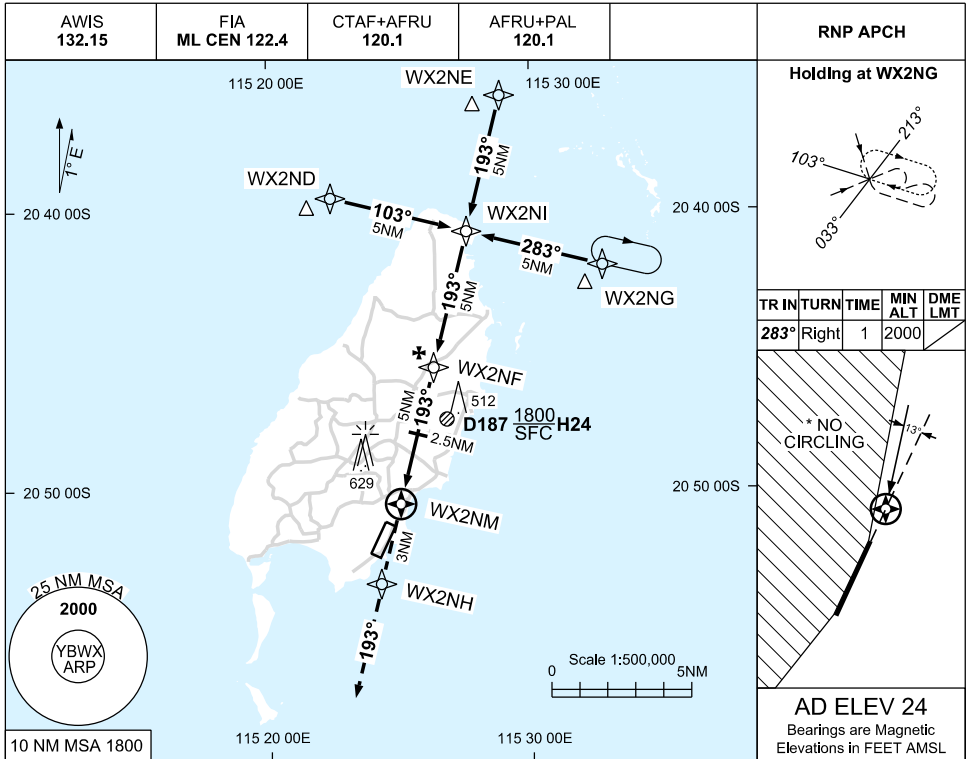
BWXGN03-177

USE QNH

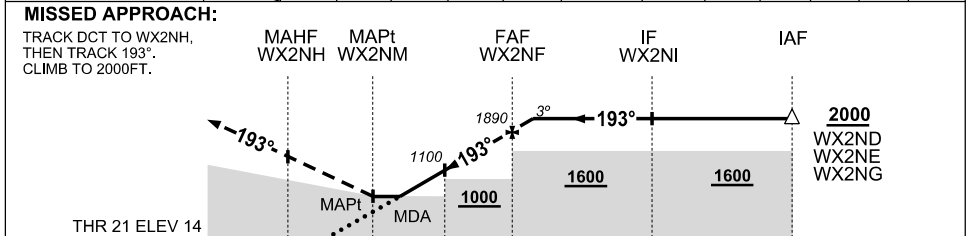
RNP Z RWY 21

30 NOV 2023

BARROW ISLAND, WA (YBWX)



NM TO NEXT WPT	WX2NM	1.0	2	2.5	3	4	WX2NF	0.3					
ALT (3° APCH PATH)		630	940	1100	1260	1570	1890	2000					



NM TO WX2NM	3	0.8	0	2.5	5	10	15
-------------	---	-----	---	-----	---	----	----

NOTES

CATEGORY	A	B	C	D
LNAV	630 (616-3.5)			NOT AUTHORISED
CIRCLING *	630 (606-2.4)		NOT AUTHORISED	
ALTERNATE	(1106-4.4)		(1116-5.5)	

1. MAX IAS HOLDING: 210KT.
- *2. NO CIRCLING WEST OF RWY 03/21.

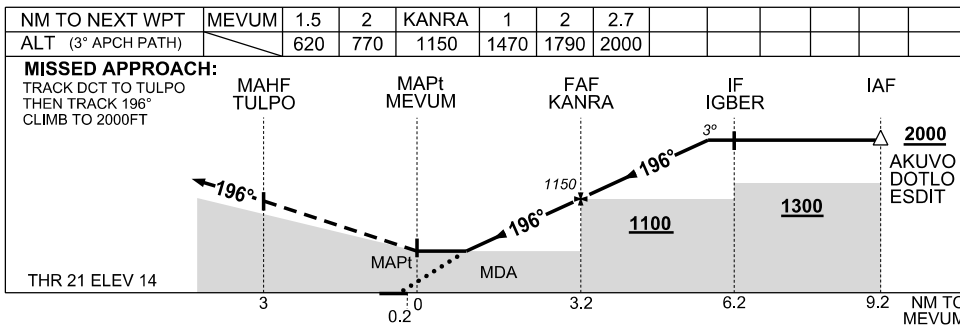
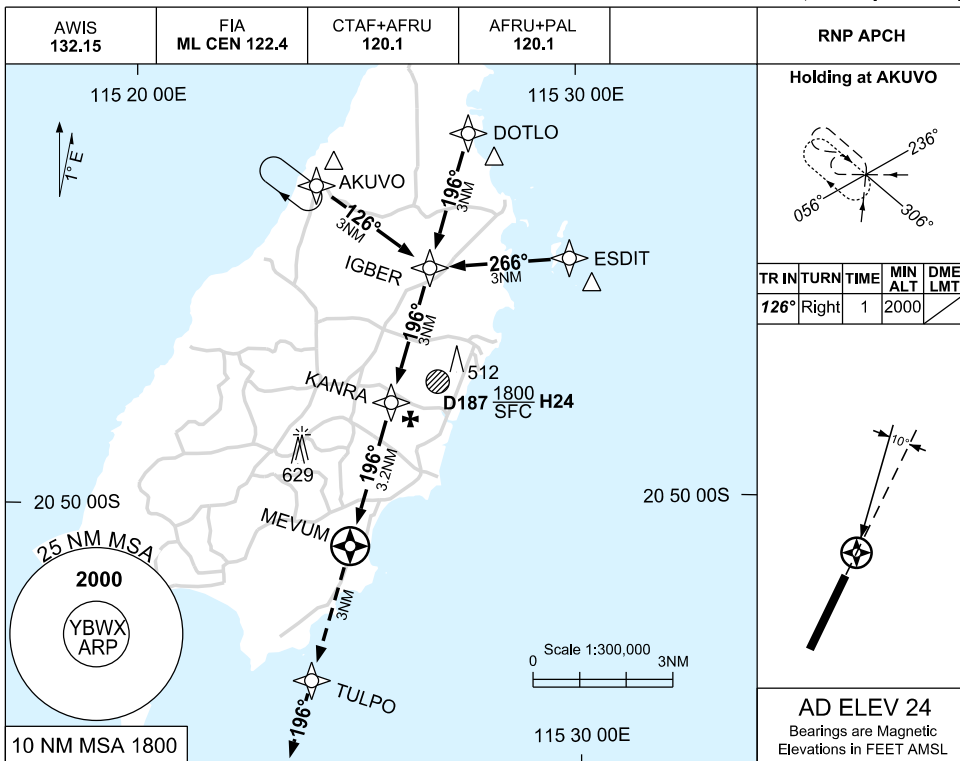
Changes: CHART TITLE, WPT IDENT, EDITORIAL

BWXGN04-177

30 NOV 2023

USE QNH

RNP Y RWY 21
BARROW ISLAND, WA (YBWX)



NOTES

CATEGORY	H
LNAV (NON VAA)	620 (606-3.4)
CIRCLING	NOT APPLICABLE
ALTERNATE	(1106-5.4)

1. MAX IAS:
 HOLDING: 100KT.

Changes: CHART TITLE, EDITORIAL

BWXGN05-177