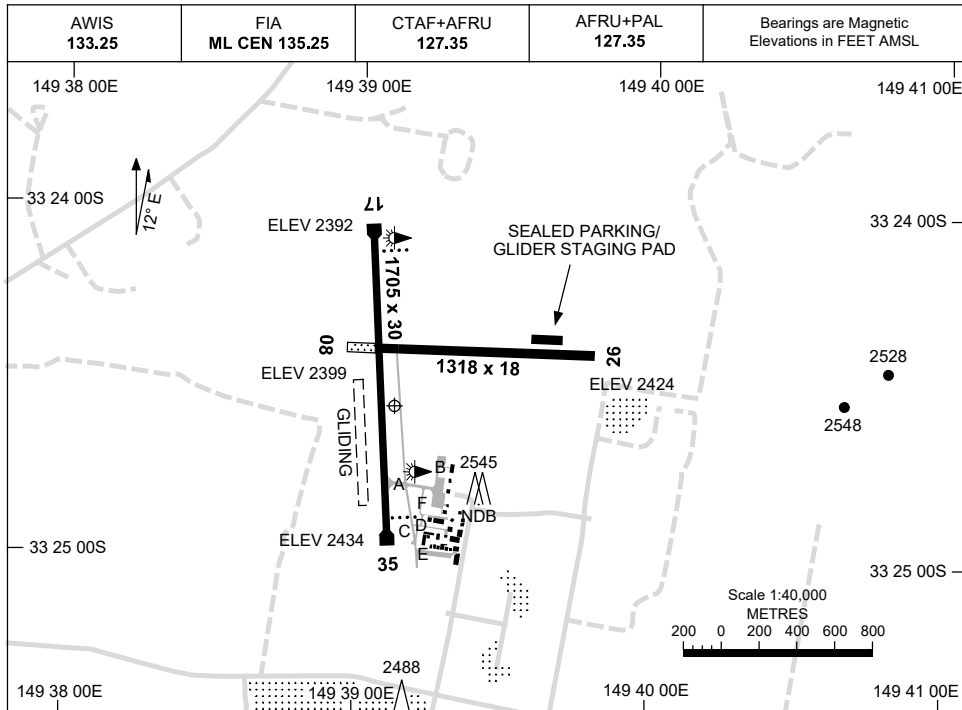


30 NOV 2023

AD ELEV 2435
33 24 34S 149 39 07E

AERODROME CHART
BATHURST, NSW (YBTH)



AERODROME LIGHTING	
RWY	TAXIWAY : GREEN CENTRELINE RL : AFRU+PAL 127.35 , SDBY (1 MINUTE)
17 ¹⁶⁴	PAPI 3.0° 41.5FT LIRL
³⁴⁴ 35	PAPI RIGHT SIDE 3.0° 41.5FT LIRL
08 ⁰⁷⁹	NIL
²⁵⁹ 26	NIL

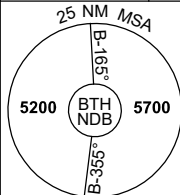
NOTES

Changes: WDI REMOVED.

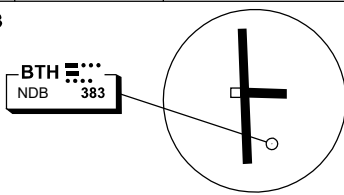
BTHAD01-177

8 SEP 2022

AWIS 133.25	FIA ML CEN 135.25	CTAF+AFRU 127.35	AFRU+PAL 127.35		Bearings are Magnetic Elevations in FEET AMSL
----------------	----------------------	---------------------	--------------------	--	--



REFERENCE WAYPOINT BTH NDB



10 NM MSA 5400

AD ELEV 2435

KADOM TO BTH 											MISSED APPROACH: TRACK 287°. CLIMB TO 5200FT.									
	NM TO BTH NDB		25	15				6	5	4	0									
CIRCLING MINIMA			A,B: 3810-2.4			C: 3810-4.0			D: N/A											
NM TO BTH NDB		6	5	4	3	2	1	0.1												
ALT (3° APCH PATH)		5700	5380	5060	4740	4430	4110	3810												

CWR TO BTH 											MISSED APPROACH: TURN LEFT, TRACK 340°. CLIMB TO 5700FT.										
	NM TO BTH NDB		25	15		10		5		0											
CIRCLING MINIMA			A,B: 3810-2.4			C: 3810-4.0			D: N/A												
NM TO BTH NDB		7	6	5	4	3	2.7														
ALT (3° APCH PATH)		5200	4870	4550	4230	3920	3810														

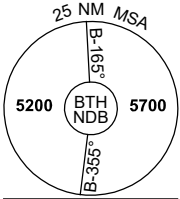
VIRUR TO BTH 											MISSED APPROACH: TURN RIGHT, TRACK 185°. CLIMB TO 5700FT.										
	NM TO BTH NDB		25	15				5		0											
CIRCLING MINIMA			A,B: 3810-2.4			C: 3810-4.0			D: N/A												
NM TO BTH NDB		5	4	3	2	1	0.6														
ALT (3° APCH PATH)		5200	4880	4560	4240	3930	3810														

Changes: RWY 08/26.

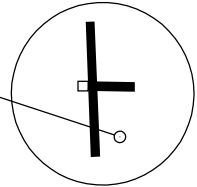
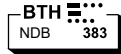
BTHDG01-172

8 SEP 2022

AWIS 133.25	FIA ML CEN 135.25	CTAF+AFRU 127.35	AFRU+PAL 127.35		Bearings are Magnetic Elevations in FEET AMSL
----------------	----------------------	---------------------	--------------------	--	--

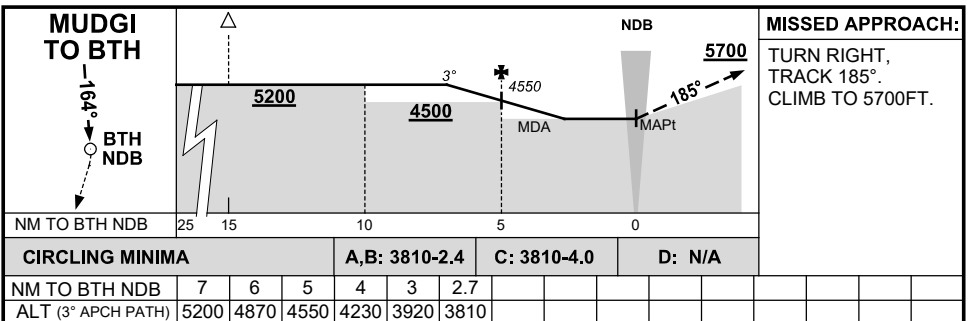
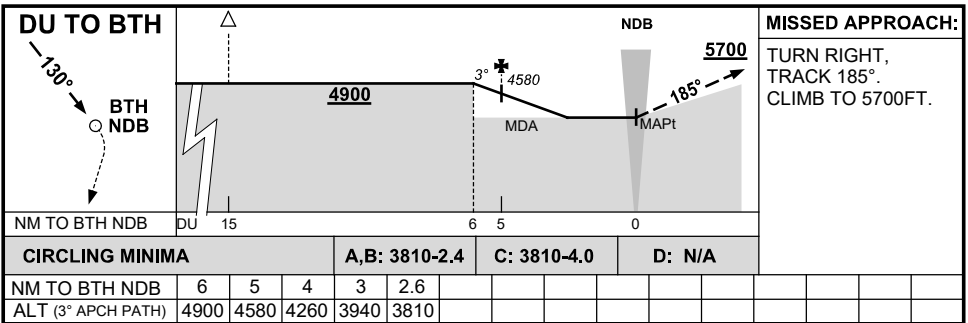
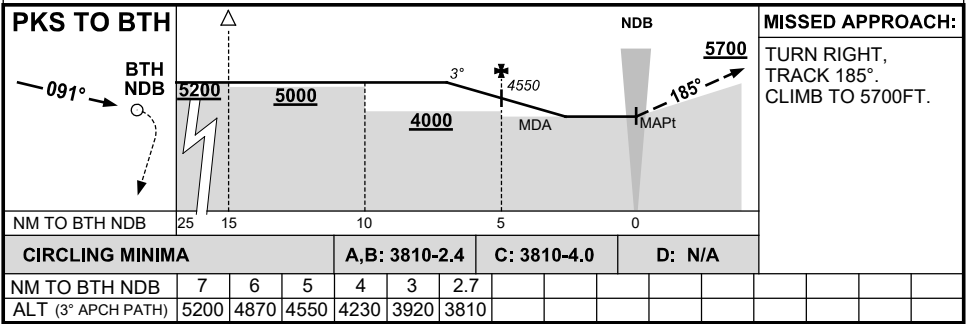


REFERENCE WAYPOINT BTH NDB



10 NM MSA 5400

AD ELEV 2435



Changes: RWY 08/26.

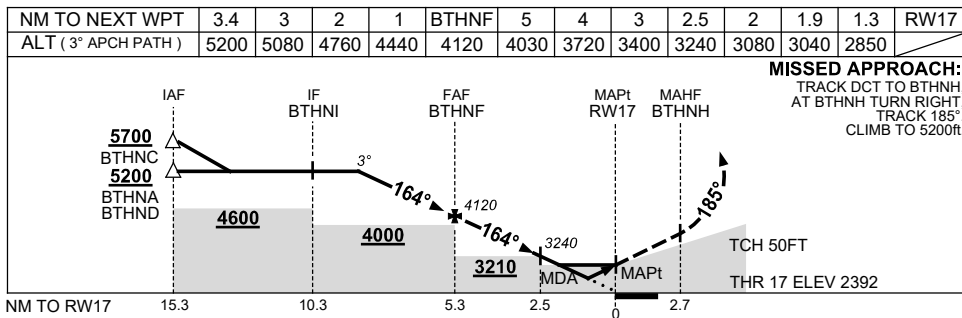
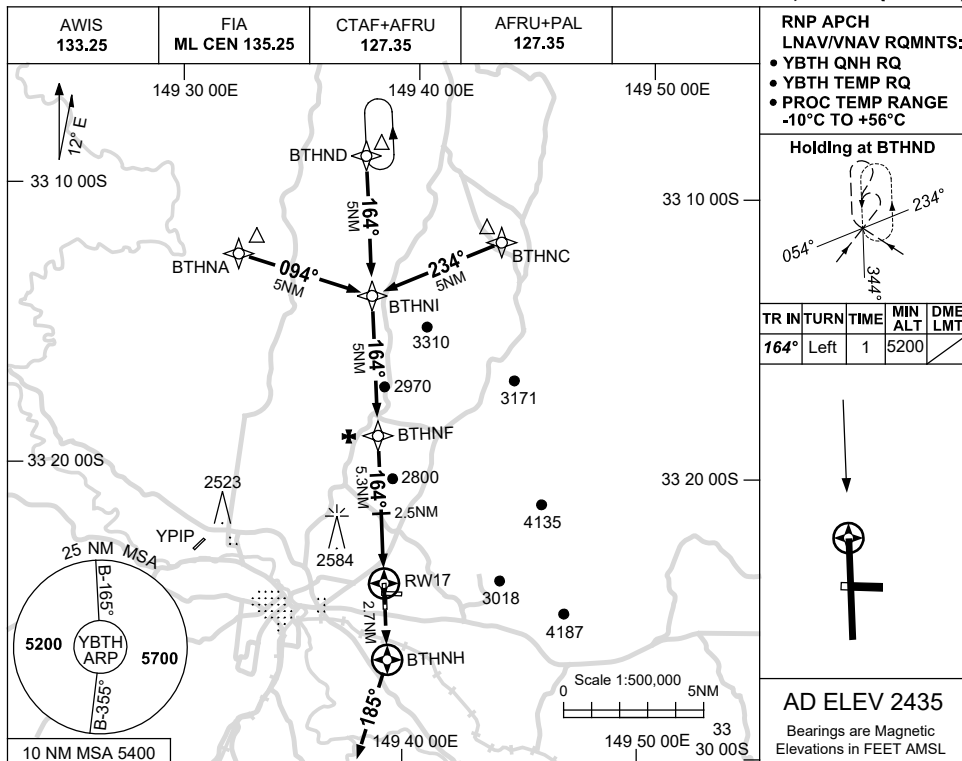
BTHDG02-172

USE QNH

RNP RWY 17

21 MAR 2024

BATHURST, NSW (YBTH)



NOTES

CATEGORY	A	B	C	D
LNAV/VNAV	2850 (458-2.6)			NOT APPLICABLE
LNAV	3040 (648-3.7)			
CIRCLING	3810 (1375-2.4)		3810 (1375-4.0)	
ALTERNATE	(1875-4.4)		(1875-6.0)	

1. MAX IAS:
INITIAL : 220KT.

Changes: GLIDING SYMBOL REMOVED, Editorial.

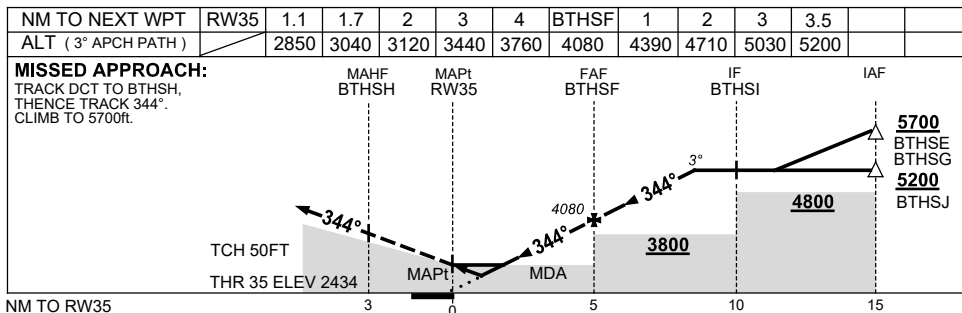
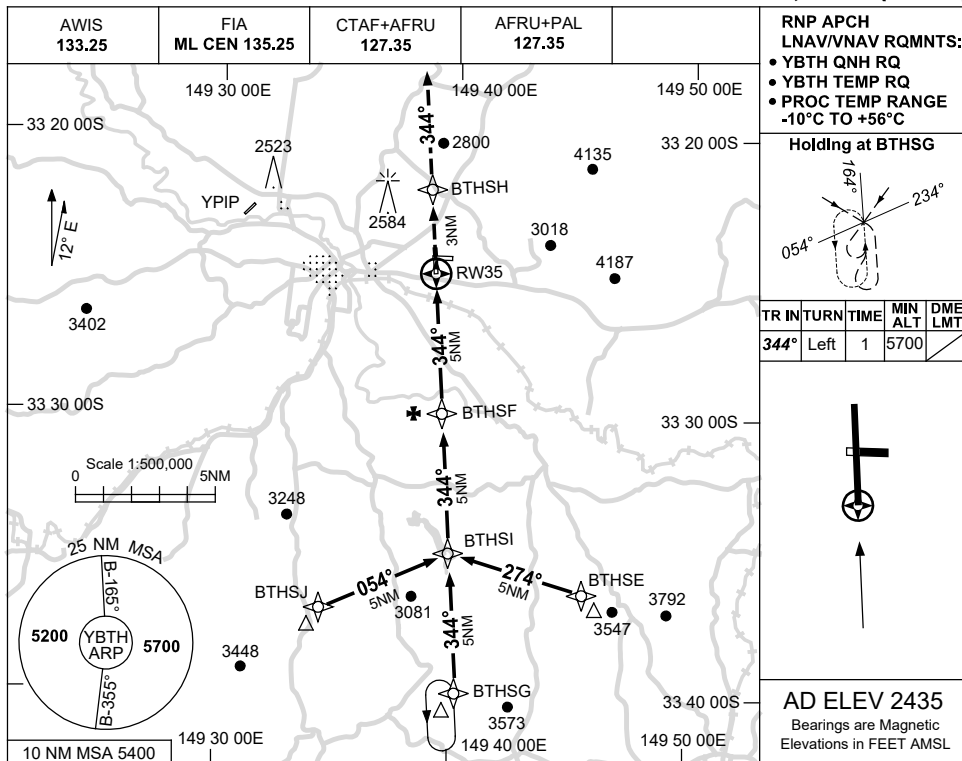
BTHGN01-178

USE QNH

RNP RWY 35

21 MAR 2024

BATHURST, NSW (YBTH)



NOTES

CATEGORY	A	B	C	D
LNAV/VNAV	2850 (416-2.3)			NOT APPLICABLE
LNAV	3040 (605-3.4)			
CIRCLING	3810 (1375-2.4)		3810 (1375-4.0)	
ALTERNATE	(1875-4.4)		(1875-6.0)	

1. MAX IAS: INITIAL : 210KT.

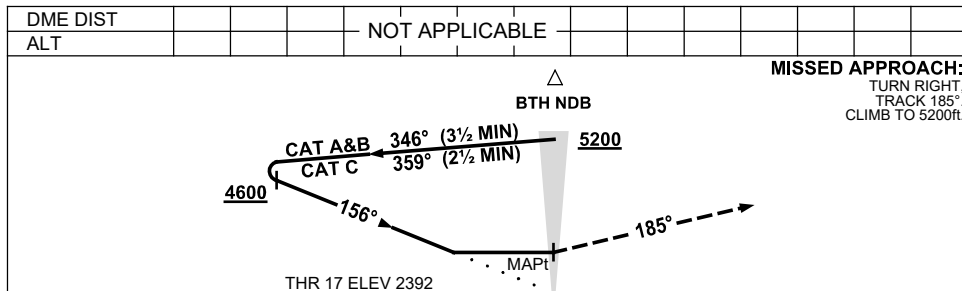
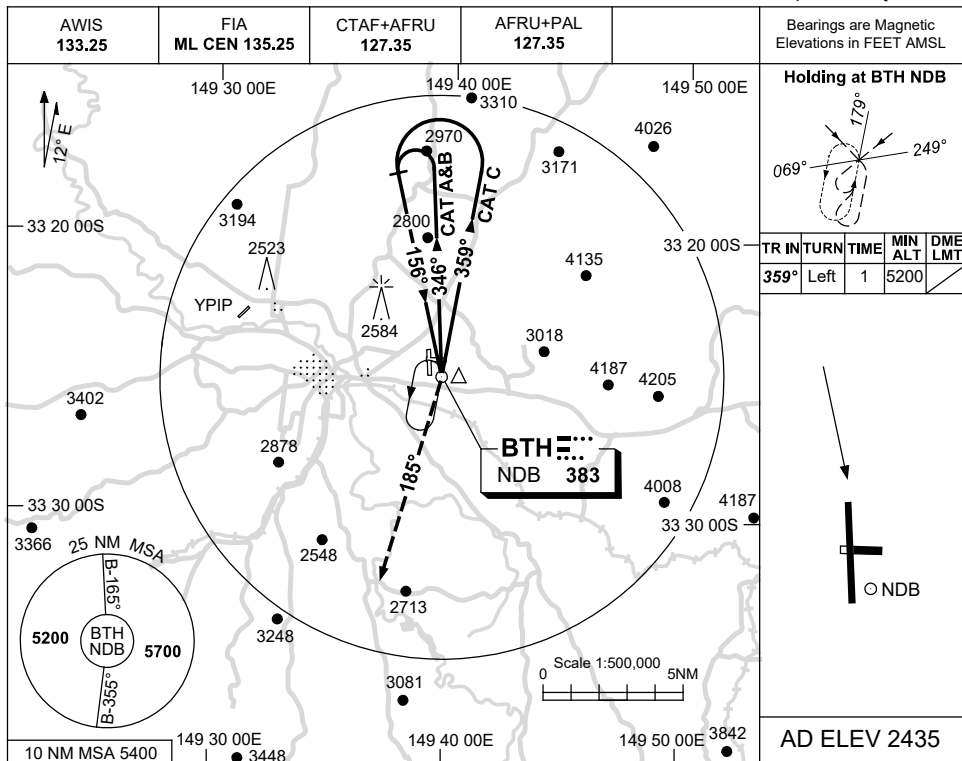
Changes: GLIDING SYMBOL REMOVED, Editorial.

BTHGN02-178

USE QNH

NDB RWY 17
BATHURST, NSW (YBTH)

21 MAR 2024



NOTES

CATEGORY	A	B	C	D
S-I NDB	3810 (1418-5.0)			NOT APPLICABLE
CIRCLING	3810 (1375-2.4)	3810 (1375-4.0)		
ALTERNATE	(1875-4.4)		(1875-6.0)	

Changes: GLIDING SYMBOL REMOVED, Editorial.

BTHNB01-178