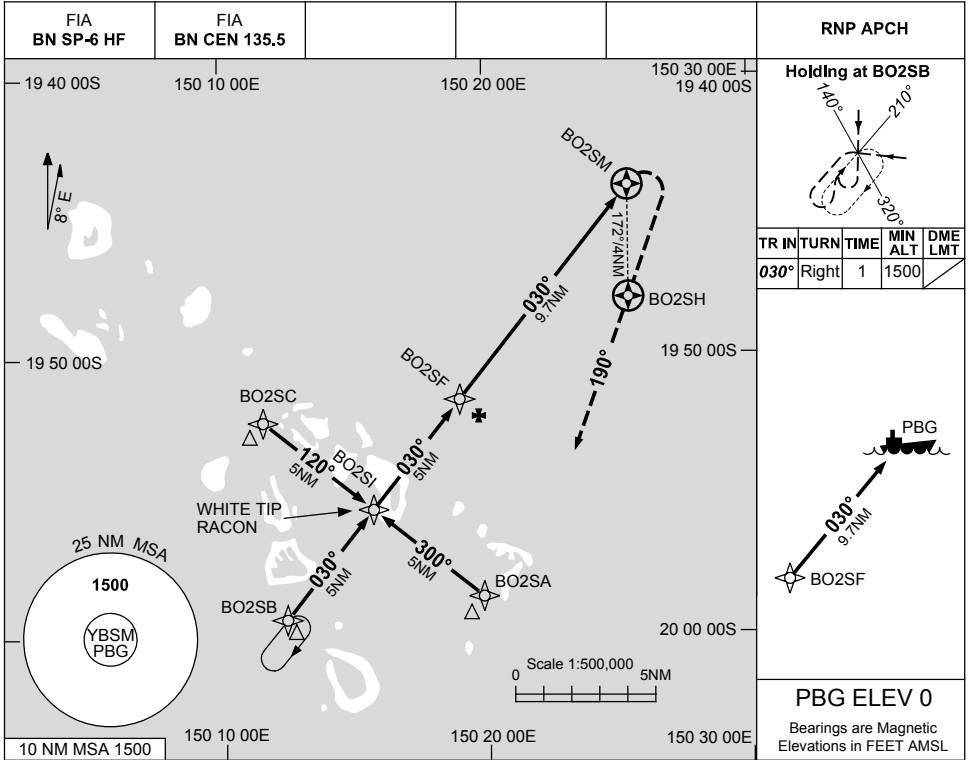


**FOR CASA APPROVED OPERATORS ONLY
USE AREA QNH**

RNP 030

23 MAR 2023

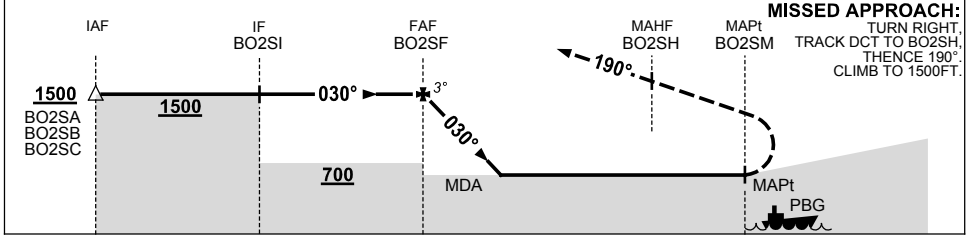
BLOSSOM BANKS, QLD (YBSM)



TR IN	TURN	TIME	MIN ALT	DME LMT
030°	Right	1	1500	

PBG ELEV 0
Bearings are Magnetic
Elevations in FEET AMSL

NM TO NEXT WPT	BO2SF	9	8	7	6.7	BO2SM
ALT (3° APCH PATH)	1500	1280	960	640	550	



MISSED APPROACH:
TURN RIGHT, TRACK DCT TO BO2SH, THENCE 190°, CLIMB TO 1500FT.

NOTES

1. MAPt LOCATED AT PBG. (19 43.95S, 150 25.45E)

CATEGORY	H
GNSS (NON-VAA)	550 (550-2.0)
ALTERNATE	(1050-4.0)

Changes: WPT NAMING CONVENTION, Editorial.

BSMGN01-174