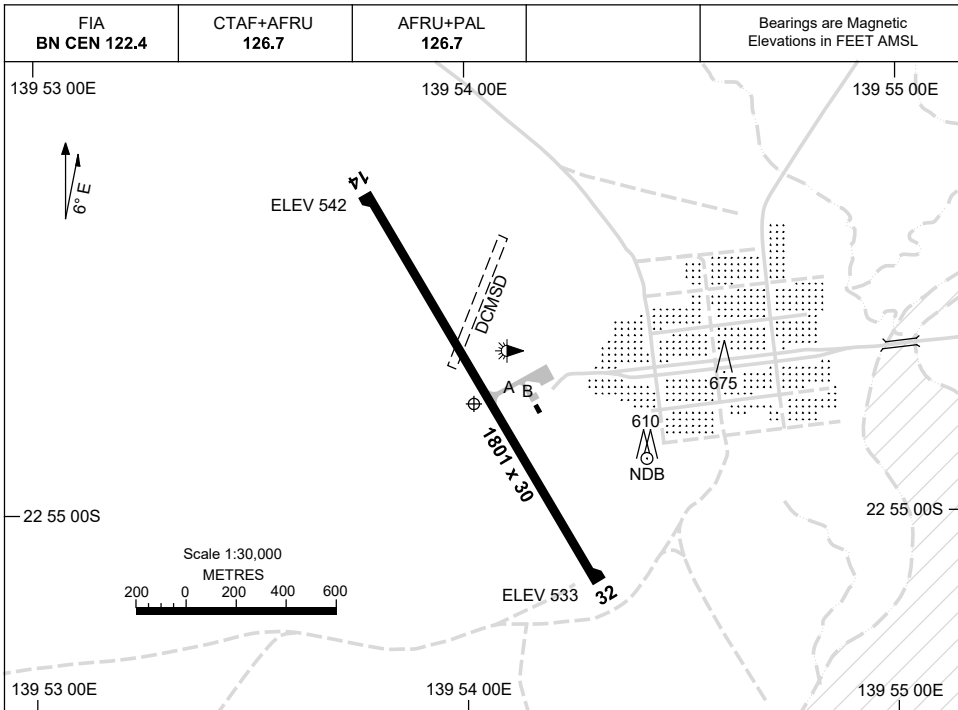


8 SEP 2022

AD ELEV 542  
22 54 48S 139 53 59E

**AERODROME CHART**  
**BOULIA, QLD (YBOU)**



	<b>AERODROME LIGHTING</b>
<b>RWY</b>	TAXIWAY : BLUE EDGE RL : AFRU+PAL 126.7 , SDBY (MAN ACT).
<b>14</b> <sup>143</sup> <b>323</b> <b>32</b>	LIRL LIRL

**NOTES**

1. FIA FREQ 122.4 AVBL FL135.

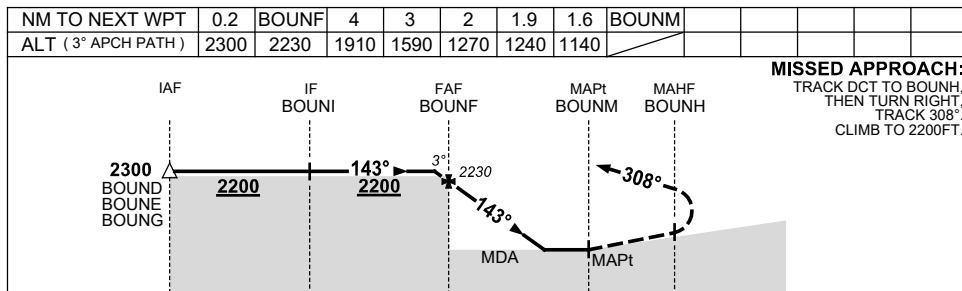
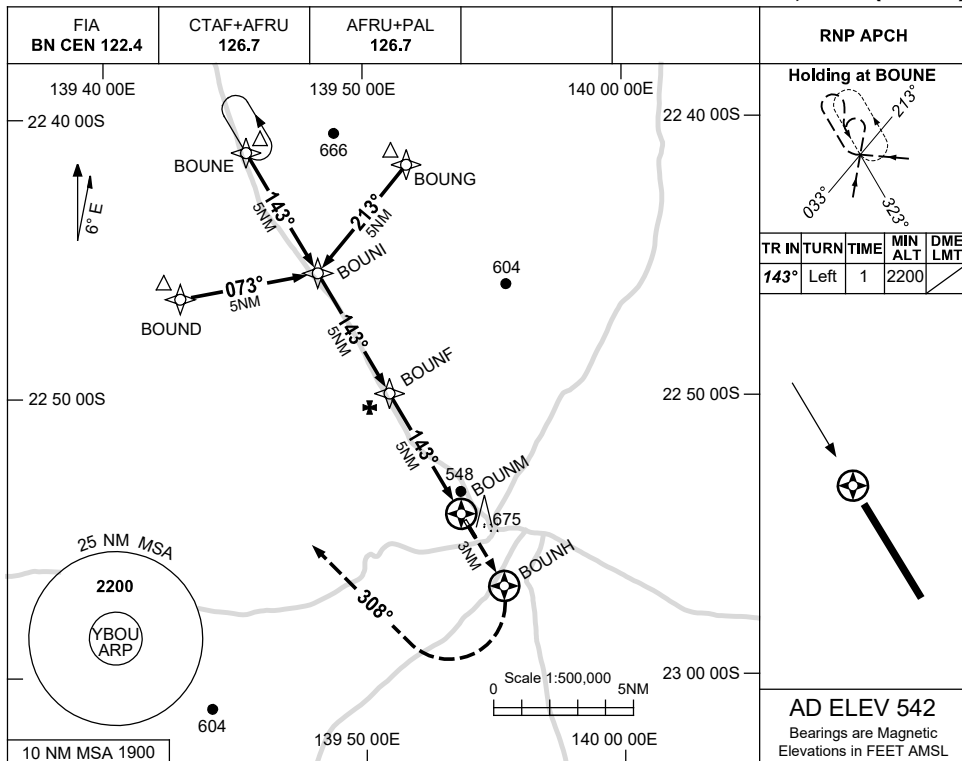
Changes: ARP LOCATION, SDBY PWR, Editorial.

BOUAD01-172

USE QNH

RNP N  
BOULIA, QLD (YBOU)

16 JUN 2022



NOTES

CATEGORY	A	B	C	D
				NOT APPLICABLE
CIRCLING	1140 (598-2.4)		1240 (698-4.0)	
ALTERNATE	(1098-4.4)		(1198-6.0)	

1. MAX IAS:  
INITIAL : 210KT.

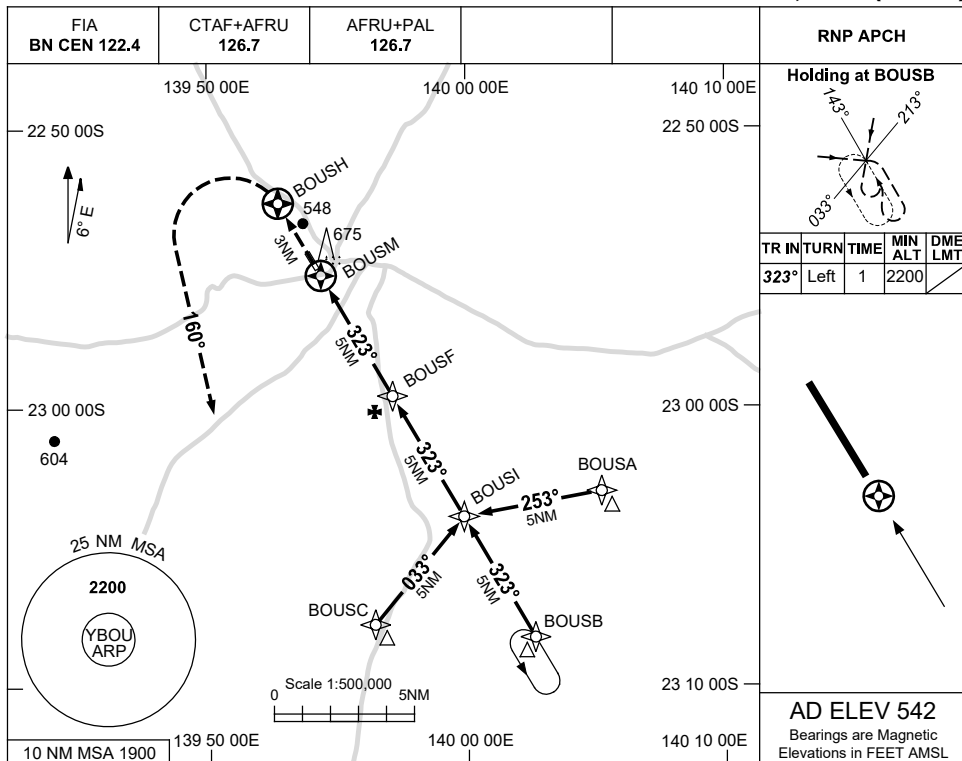
Changes: CHART TITLE, PBN SPECIFICATION BOX.

BOUGN01-171

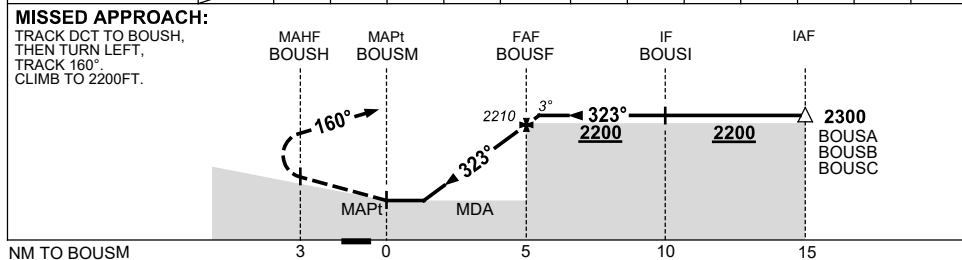
USE QNH

RNP S  
BOULIA, QLD (YBOU)

16 JUN 2022



NM TO NEXT WPT	BOUSM	1.6	2	3	4	BOUSF	0.3				
ALT (3° APCH PATH)		1140	1240	1570	1890	2210	2300				



**NOTES**

CATEGORY	A	B	C	D
				NOT APPLICABLE
CIRCLING	1140 (598-2.4)		1240 (698-4.0)	
ALTERNATE	(1098-4.4)		(1198-6.0)	

1. MAX IAS:  
INITIAL : 210KT.

Changes: CHART TITLE, PBN SPECIFICATION BOX.

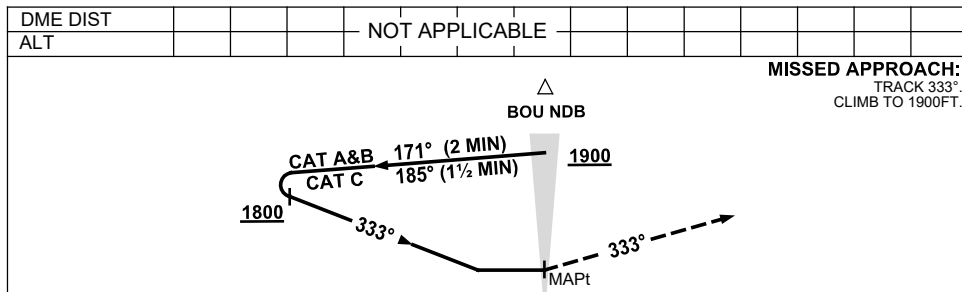
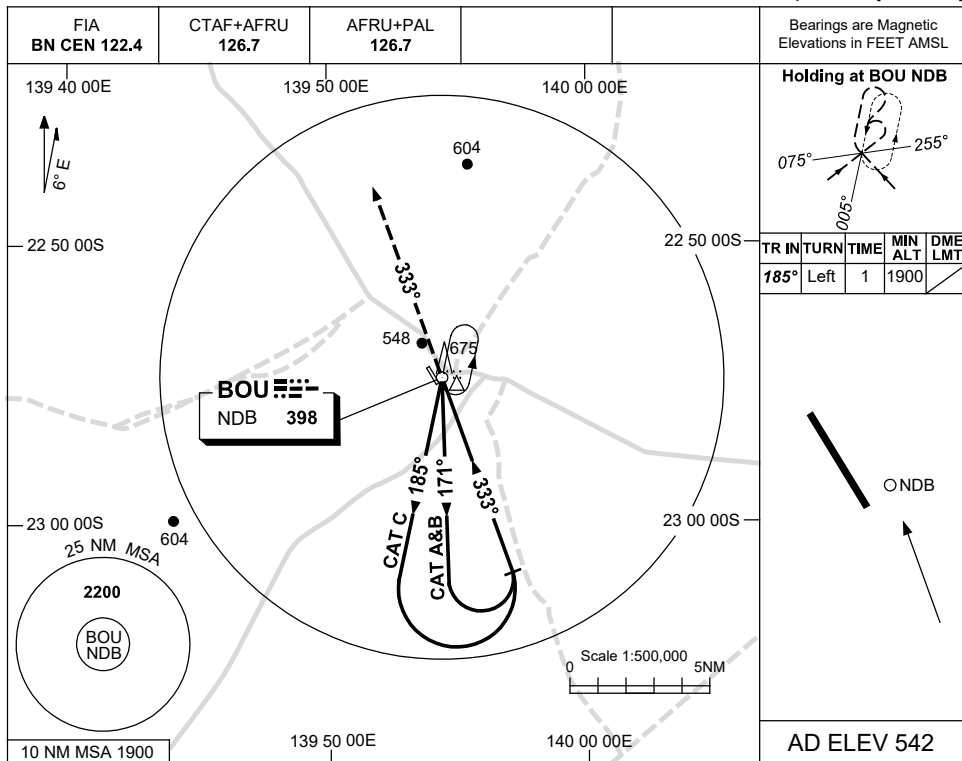
BOUGN02-171

USE QNH

NDB-A

**BOULIA, QLD (YBOU)**

15 AUG 2019



**MISSED APPROACH:**  
 TRACK 333°  
 CLIMB TO 1900FT.

**NOTES**

CATEGORY	A	B	C	D
				NOT APPLICABLE
CIRCLING	1140 (598-2.4)	1240 (698-4.0)		
ALTERNATE	(1098-4.4)	(1198-6.0)		

1. MAX IAS:  
 INITIAL : 210KT.

Changes: OUTBOUND MIN ALT, CO-ORD FORMAT, Editorial.

BOUNB01-160