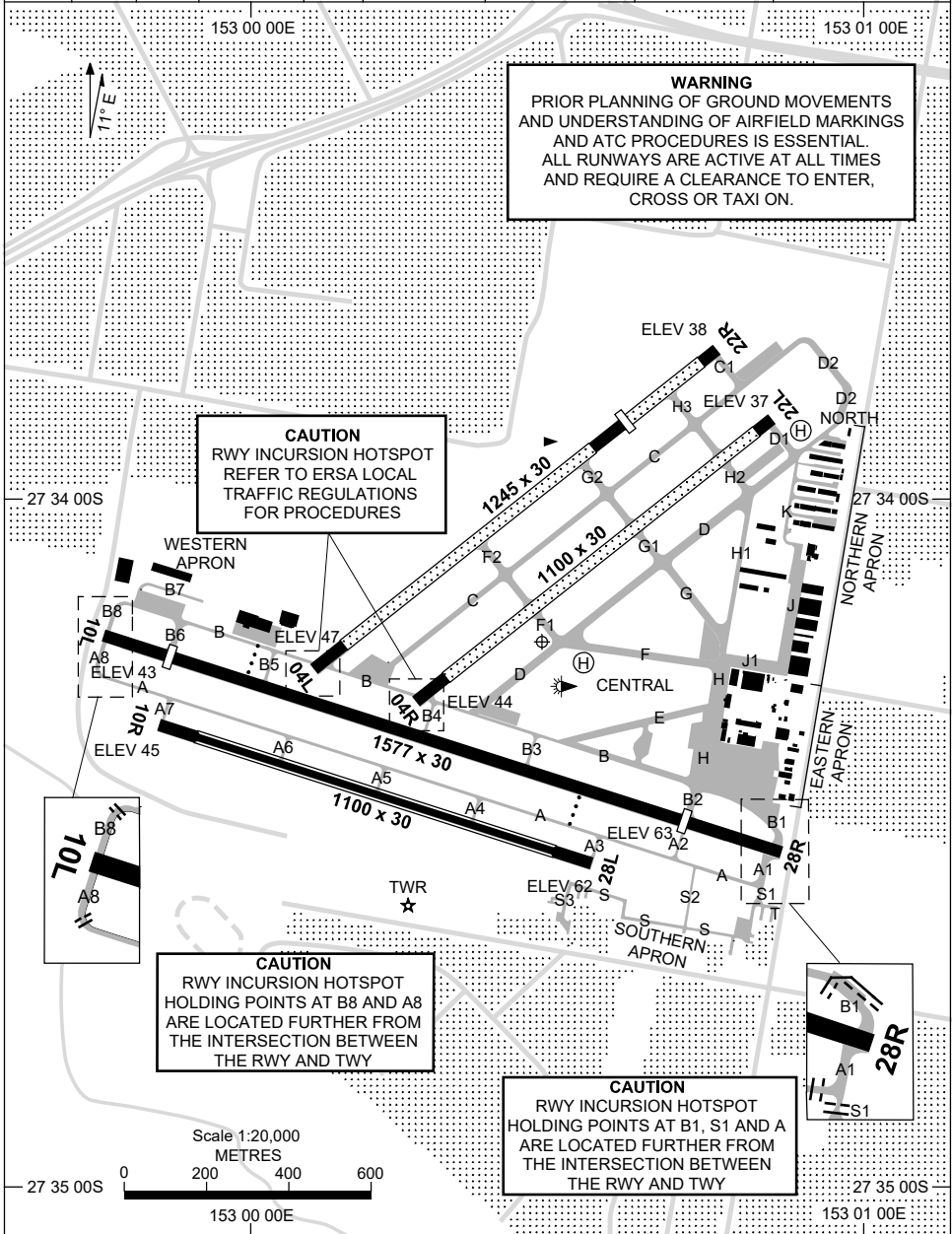


5 SEP 2024

27 34 13S 153 00 29E

BRISBANE/ARCHERFIELD, QLD (YBAF)

ATIS 120.9	AWIS 128.4	APP 125.6	TWR 118.1 123.6	SMC 119.9	FIA (AH) BN CEN 125.7	CTAF+AFRU (AH) 118.1	AFRU+PAL (AH) 118.1	Bearings are Magnetic Elevations in FEET AMSL
----------------------	----------------------	---------------------	---------------------------	---------------------	---------------------------------	--------------------------------	-------------------------------	--



Changes: EASTERN APRON 1 REMOVED.

BAFAD01-180

8 SEP 2022

AD ELEV 65
27 34 13S 153 00 29E

AERODROME CHART - Page 2
BRISBANE/ARCHERFIELD, QLD (YBAF)

ATIS 120.9	AWIS 128.4	APP 125.6	TWR 118.1 123.6	SMC 119.9	FIA (AH) BN CEN 125.7	CTAF+AFRU (AH) 118.1	AFRU+PAL (AH) 118.1	Bearings are Magnetic Elevations in FEET AMSL
---------------	---------------	--------------	--------------------	--------------	--------------------------	-------------------------	------------------------	--

--	--	--	--	--	--	--	--	--

RWY	AERODROME LIGHTING							
		ABN : ALTN 6 W TAXIWAY : BLUE EDGE LGT ON TWY B , B1-B8, E AND H, EXC B4 AND B7. GREEN CL LGT ON INTERSECTION OF TWY B, B1, B2 AND H. RL : AFRU+PAL (AH) 118.1 , SDBY (15 SEC)						
10L 277	097 28R	PAPI 3.0° 42FT MIRL RTIL PAPI 3.0° 42FT MIRL RTIL						
04L 221	041 22R	NIL NIL						
10R 277	097 28L	NIL NIL						
04R 221	041 22L	NIL NIL						

<p>NOTES</p> <p>1. AWIS REQUIRES 1 SEC PULSE TO ACTIVATE. 2. PAPI AVBL ON REQ DURING TWR HR. ACTIVATED BY PAL OUTSIDE TWR HR.</p>								
---	--	--	--	--	--	--	--	--

Changes: TWY LIGHTING, NOTES

BAFAD02-172

**STANDARD INSTRUMENT DEPARTURES (SID)
ARCHERFIELD THREE DEPARTURE (RADAR) - RWY 10L & 28R
BRISBANE/ARCHERFIELD, QLD (YBAF)**

5 SEP 2024

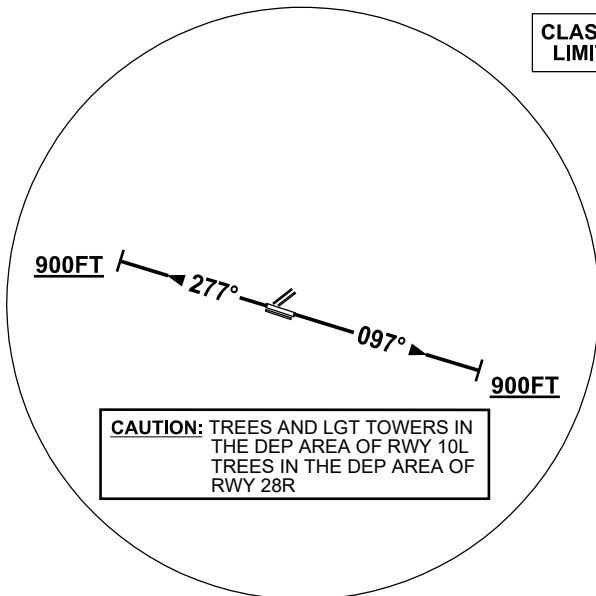
ATIS 120.9	AWIS 128.4	TWR 118.1 123.6	SMC 119.9	FIA (AH) BN CEN 125.7	CTAF+AFRU (AH) 118.1	AFRU+PAL (AH) 118.1	Bearings are Magnetic Elevations in FEET AMSL
---------------	---------------	--------------------	--------------	--------------------------	-------------------------	------------------------	--

WARNING: Part of these procedures are conducted outside controlled airspace.

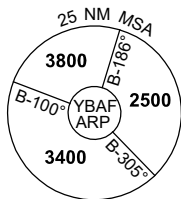
NOT TO SCALE



**CLASS D SPEED
LIMITS APPLY**



CAUTION: TREES AND LGT TOWERS IN THE DEP AREA OF RWY 10L
TREES IN THE DEP AREA OF RWY 28R



10 NM MSA 2900

ARCHERFIELD THREE DEPARTURE (RADAR)

PROCEDURE NOT AVBL FROM RWY 10R / 28L

WARNING: Part of these procedures are conducted outside controlled airspace.

RWY 10L

- GRAD 3.3%
- Track 097°
- AT or ABV 900ft BUT NOT BEFORE DER turn to assigned heading or track
- Contact Departures when advised by Tower

RWY 28R

- GRAD 4.3% to 1900ft then 3.3%
- Track 277°
- AT or ABV 900ft BUT NOT BEFORE DER turn to assigned heading or track
- Contact Departures when advised by Tower

COMMUNICATIONS FAILURE PROCEDURE

On recognition of communications failure

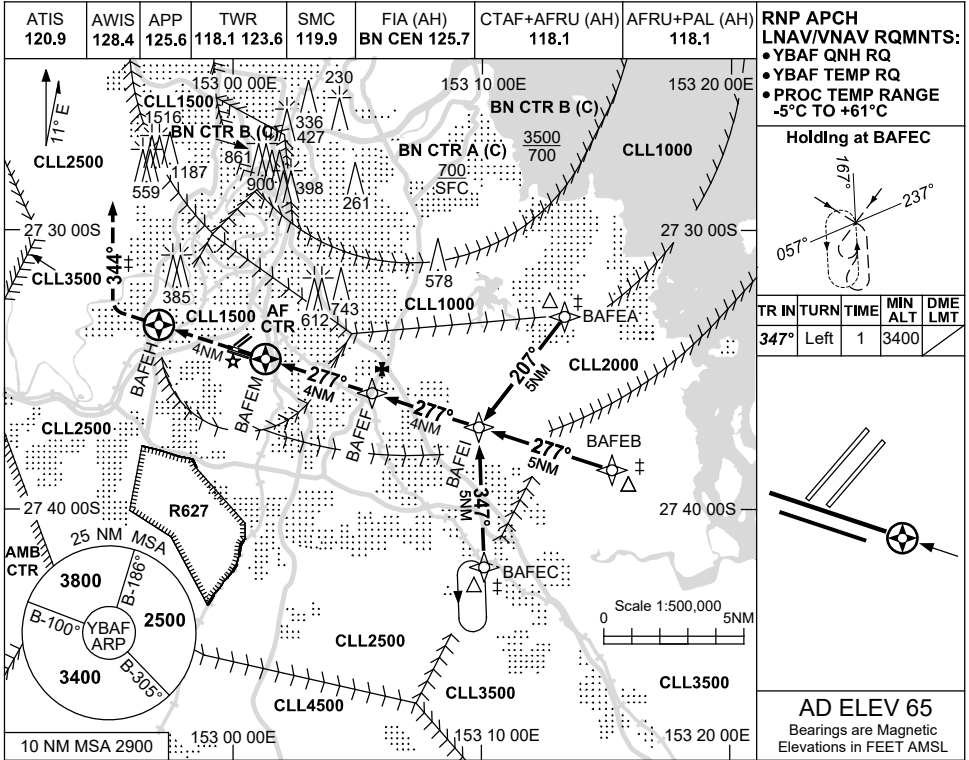
- Squawk 7600
- Climb on last heading to: 25 MSA (max IAS 180KT) or assigned altitude if higher than 25 MSA (max IAS standard climb IAS)
- Maintain altitude for 2 mins.
- Continue climb to flight plan altitude and proceed in accordance with Flight Plan (As amended by latest ATC clearance and acknowledged, if applicable)

USE QNH

RNP RWY 28R

BRISBANE/ARCHERFIELD, QLD (YBAF)

9 SEP 2021



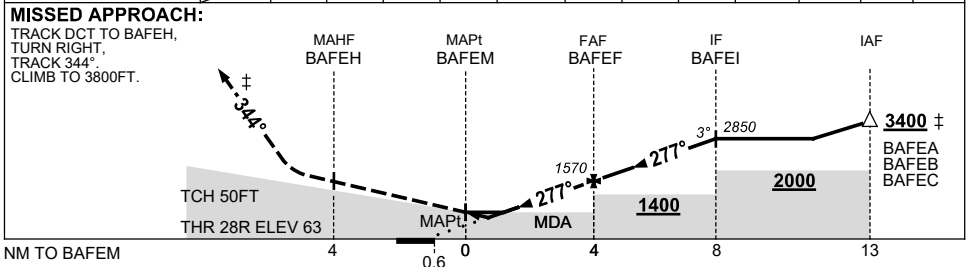
RNP APCH
LNAV/VNAV RQMTS:
 • YBAF QNH RQ
 • YBAF TEMP RQ
 • PROC TEMP RANGE
 -5°C TO +61°C

Holding at BAFEC

TR	IN	TURN	TIME	MIN ALT	DME LMT
347°	Left	1	3400		

AD ELEV 65
 Bearings are Magnetic
 Elevations in FEET AMSL

NM TO NEXT WPT	BAFEM	1.2	1.6	2	3	BAFEB	1	2	3	BAFEI		
ALT (3° APCH PATH)		680	810	940	1260	1570	1890	2210	2530	2850		



CATEGORY	A	B	C	D
LNAV/VNAV	680 (617-3.5)		NOT APPLICABLE	
LNAV	810 (745-4.3)			
CIRCLING	1010 (945-2.4)			
ALTERNATE	(1445-4.4)			

- NOTES**
- MAX IAS :
HOLDING: 150KT.
 - ATC CLR RQ FOR PROC.
 - PROC PARTIALLY OUTSIDE CONTROL AREA.

Changes: CHART TITLE, PBN SPECIFICATION BOX.

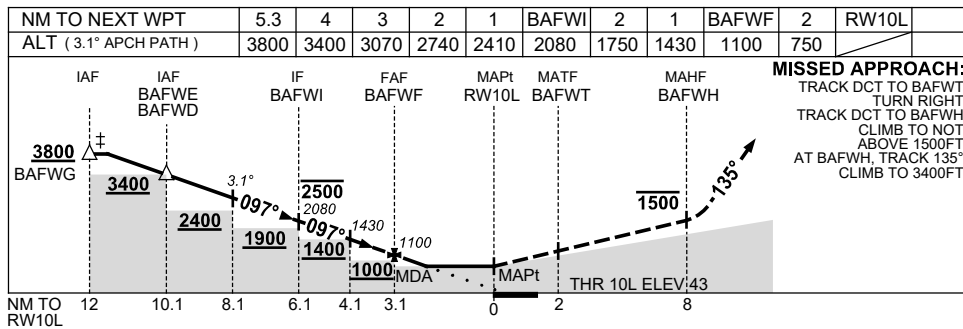
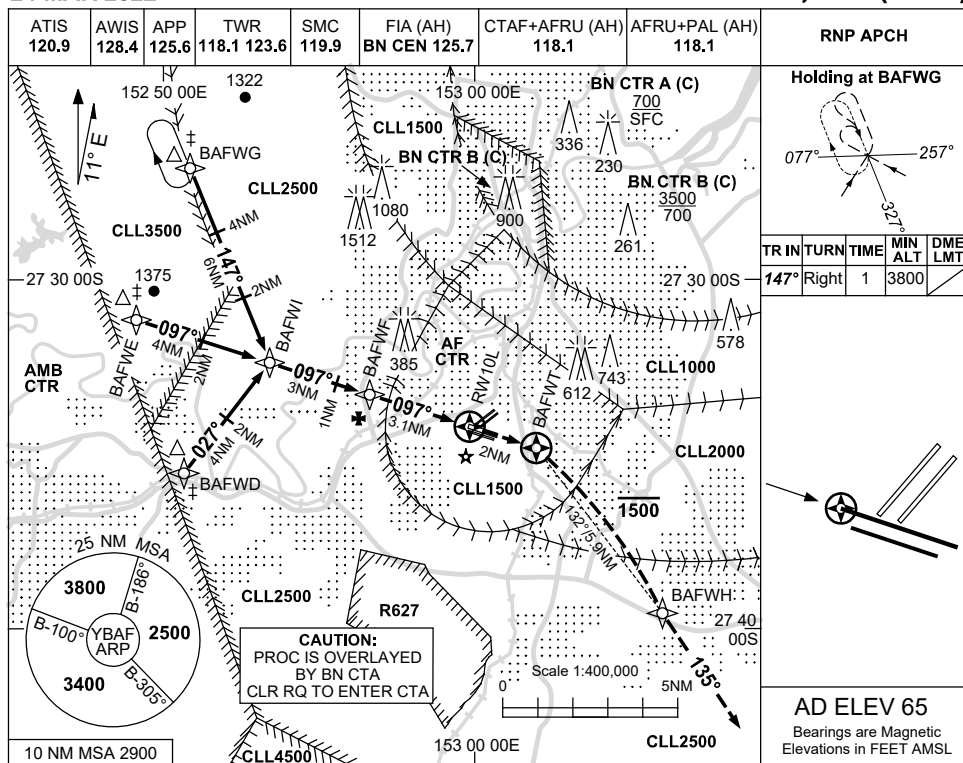
BAFGN01-168

USE QNH

RNP Z RWY 10L

24 MAR 2022

BRISBANE/ARCHERFIELD, QLD (YBAF)



CATEGORY	A	B	C	D
LNAV	750 (707-4.0)		NOT APPLICABLE	
CIRCLING	1010 (945-2.4)			
ALTERNATE	(1445-4.4)			

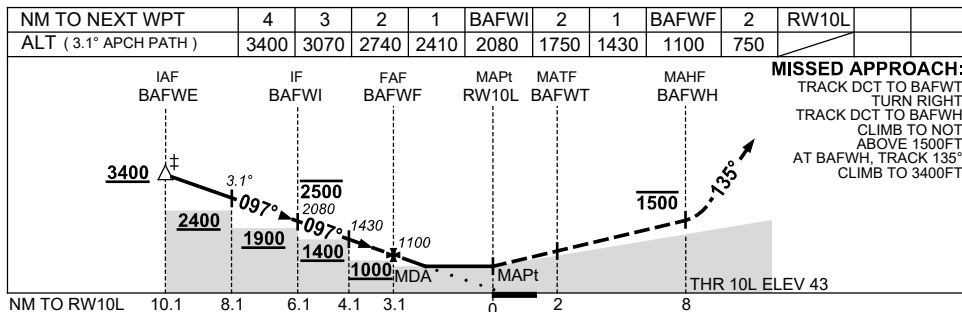
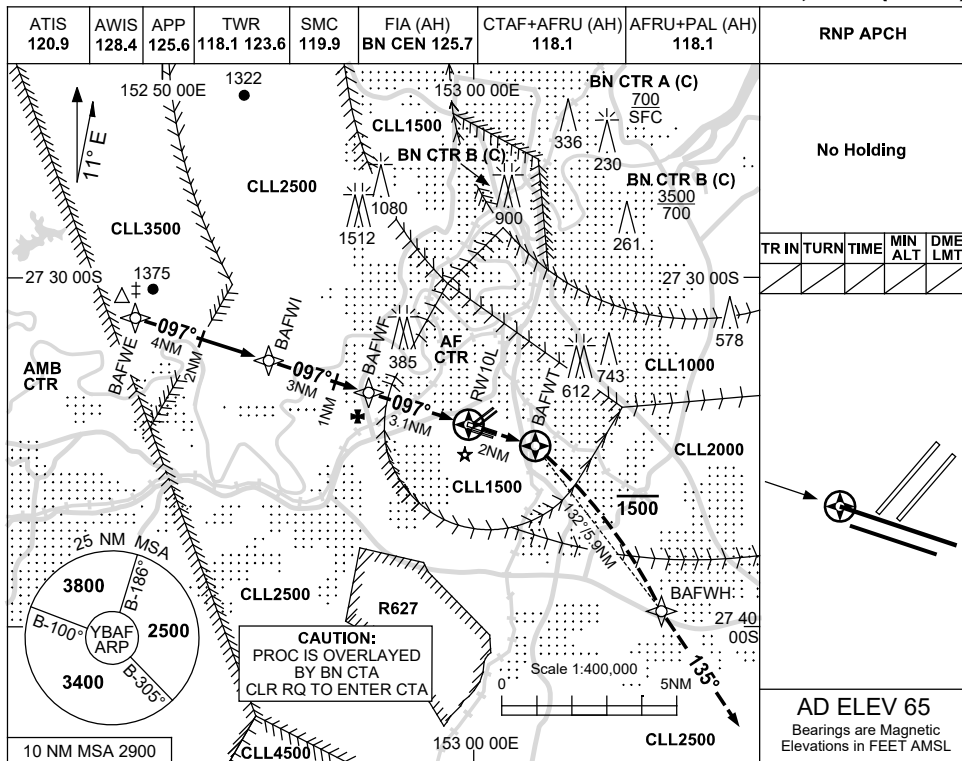
- NOTES**
- ‡ 1. ATC CLR RQ FOR PROC.
 2. PROC NOT FULLY CONTAINED IN CONTROLLED AIRSPACE.
 3. MAX IAS:
INITIAL 160KTS
MAP TURN 160KTS

Changes: PROC ALTITUDES

BAFGN02-170

USE QNH RNP Y RWY 10L
BRISBANE/ARCHERFIELD, QLD (YBAF)

24 MAR 2022



CATEGORY	A	B	C	D	NOTES	
LNAV	NOT APPLICABLE			750 (707-4.0)	NOT APPLICABLE	† 1. ATC CLR RQ FOR PROC. 2. PROC NOT FULLY CONTAINED IN CONTROLLED AIRSPACE. 3. MAX IAS: MAP TURN 210KTS.
CIRCLING				1240 (1175-4.0)		
ALTERNATE				(1675-6.0)		

Changes: PROC ALTITUDES.

BAFGN03-170