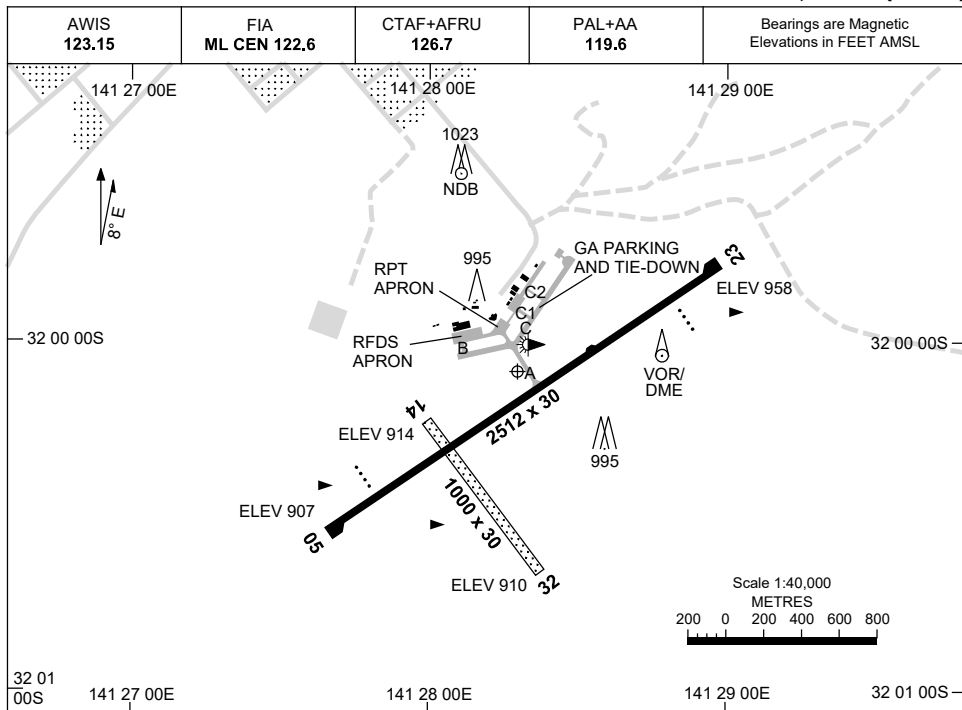


8 SEP 2022

AD ELEV 959  
32 00 05S 141 28 18E

**AERODROME CHART**  
**BROKEN HILL, NSW (YBHI)**



	<b>AERODROME LIGHTING</b>
<b>RWY</b>	TAXIWAY : BLUE EDGE ON TWY A, B, C AND C1 RL : PAL+AA 119.6 , SDBY , PTBL (EMERG ONLY, 90 MIN PN)
<b>05</b> <sup>047</sup>	PAPI 3.0° 47FT LIRL PTBL
227 <b>23</b>	PAPI 3.0° 47FT LIRL PTBL
<b>14</b> <sup>134</sup>	PTBL
314 <b>32</b>	PTBL

**NOTE**

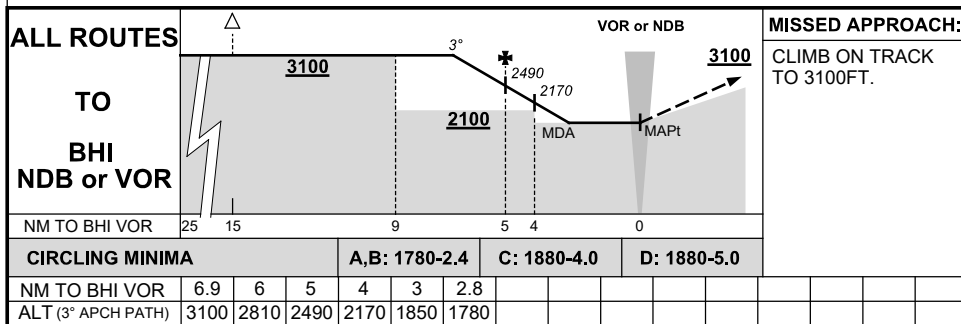
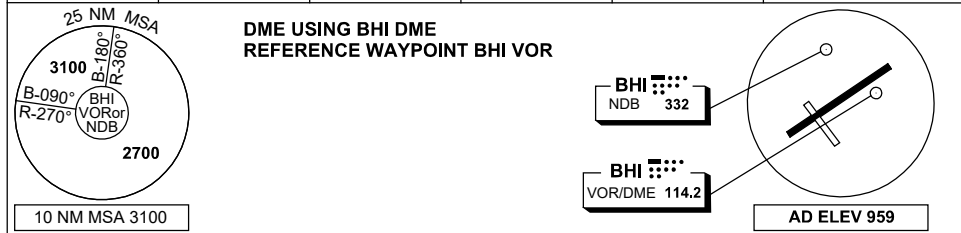
Changes: PTBL LIGHTING PN

BHIAD01-172

# DME or GNSS ARRIVAL PROCEDURES BROKEN HILL, NSW (YBHI)

16 JUN 2022

AWIS 123.15	FIA ML CEN 122.6	CTAF+AFRU 126.7	PAL+AA 119.6		Bearings are Magnetic Elevations in FEET AMSL
----------------	---------------------	--------------------	-----------------	--	--

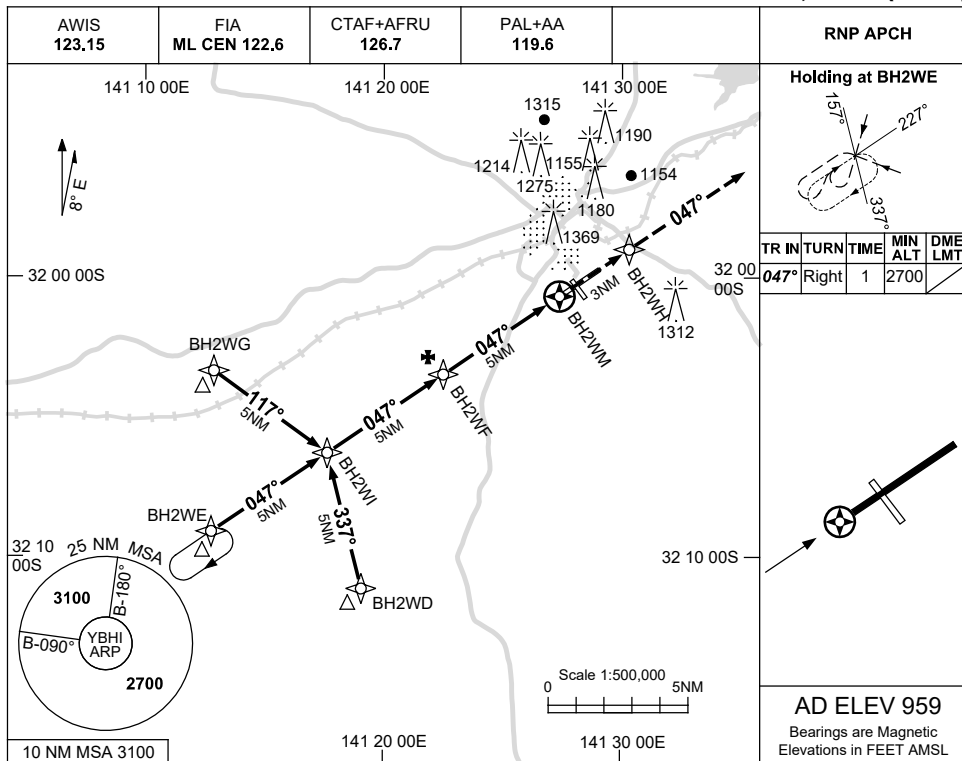


USE QNH

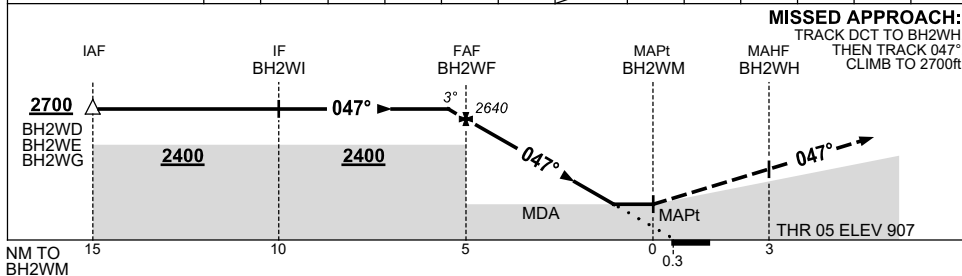
RNP RWY 05

5 SEP 2024

**BROKEN HILL, NSW (YBHI)**



NM TO NEXT WPT	0.2	BH2WF	4	3	2	1.3	BH2WM						
ALT (3° APCH PATH)	2700	2640	2320	2000	1680	1470							



**NOTES**

CATEGORY	A	B	C	D
LNAV	<b>1470 (563-3.2)</b>			
CIRCLING	<b>1770 (811-2.4)</b>		<b>1880 (921-4.0)</b>	<b>1880 (921-5.0)</b>
ALTERNATE	(1311-4.4)		(1421-6.0)	(1421-7.0)

1. MAX IAS:  
INITIAL : 210KT.

Changes: CIRCLING MINIMA, WPT NAMING CONVENTION, Editorial.

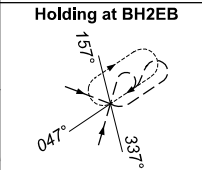
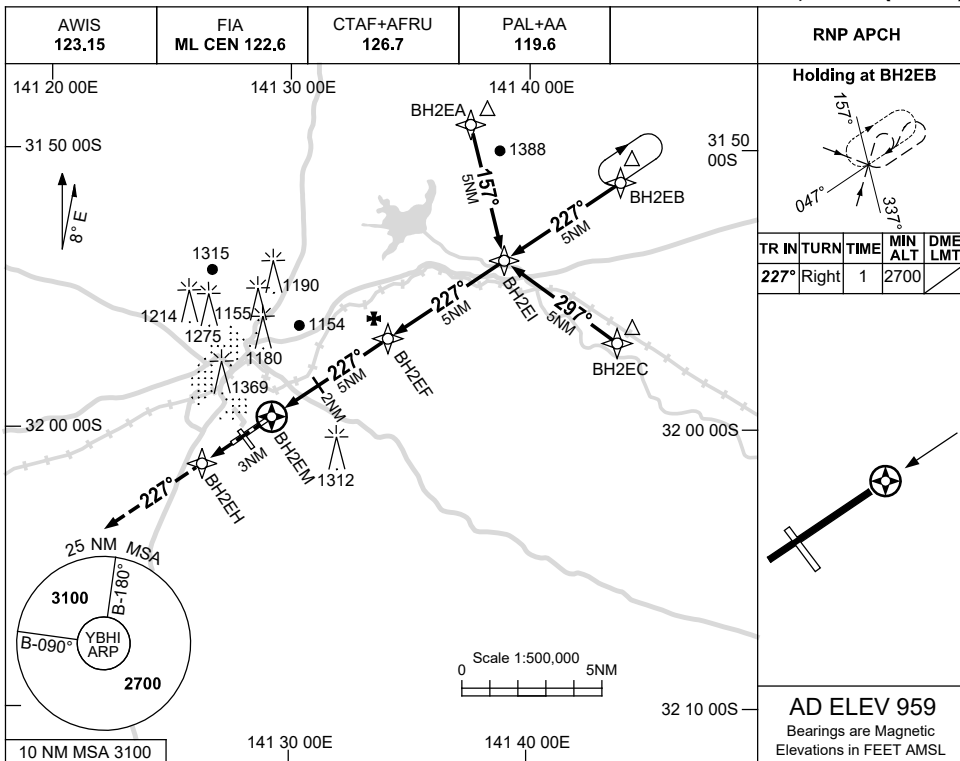
BHIGN01-180

USE QNH

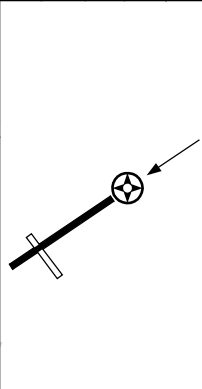
RNP RWY 23

**BROKEN HILL, NSW (YBHI)**

5 SEP 2024

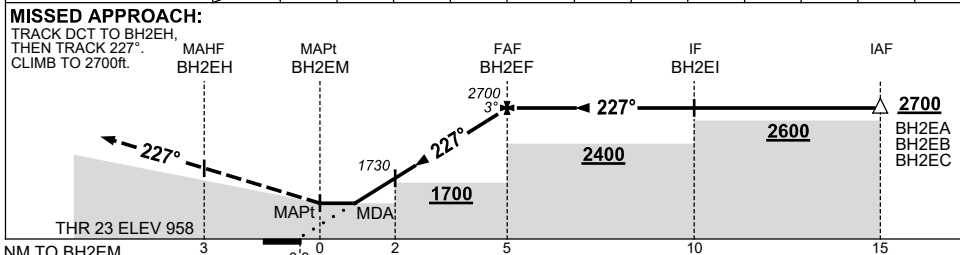


TR	IN	TURN	TIME	MIN ALT	DME LMT
227°	Right	1		2700	



**AD ELEV 959**  
Bearings are Magnetic  
Elevations in FEET AMSL

NM TO NEXT WPT	BH2EM	1.4	2	3	4	BH2EF				
ALT (3° APCH PATH)		1540	1730	2050	2370	2700				



**NOTES**

CATEGORY	A	B	C	D
LNAV	<b>1540 (581-3.3)</b>			
CIRCLING	<b>1770 (811-2.4)</b>	<b>1880 (921-4.0)</b>	<b>1880 (921-5.0)</b>	
ALTERNATE	(1311-4.4)	(1421-6.0)	(1421-7.0)	

1. MAX IAS:  
INITIAL : 210KT.

Changes: CIRCLING MINIMA, WPT NAMING CONVENTION, Editorial.

BHIGN02-180

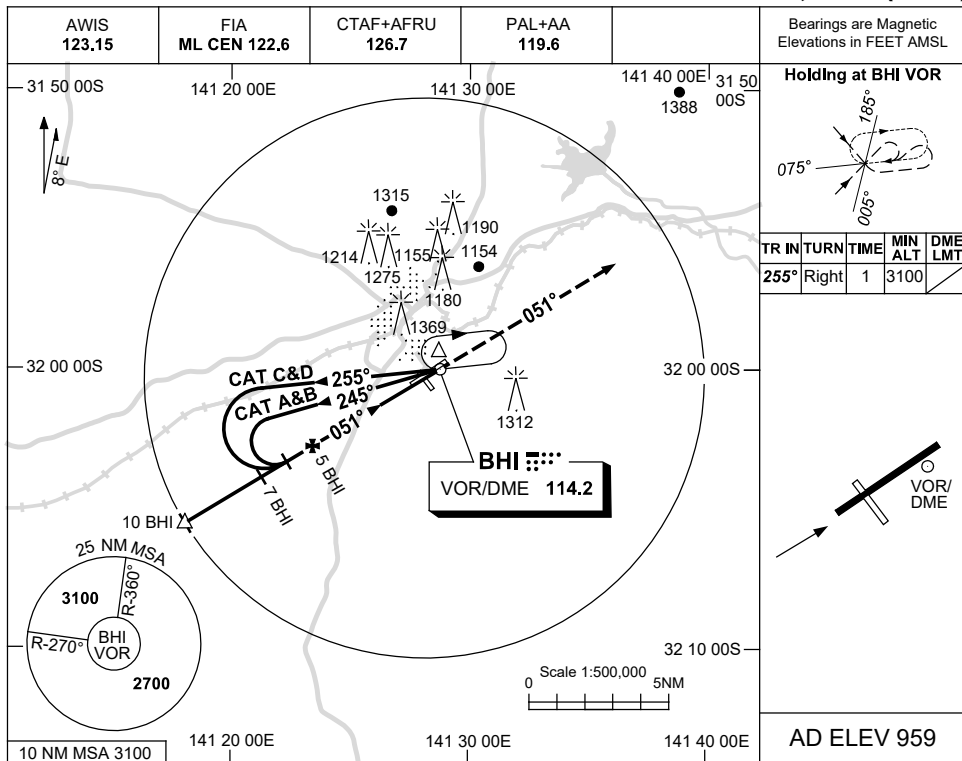


USE QNH

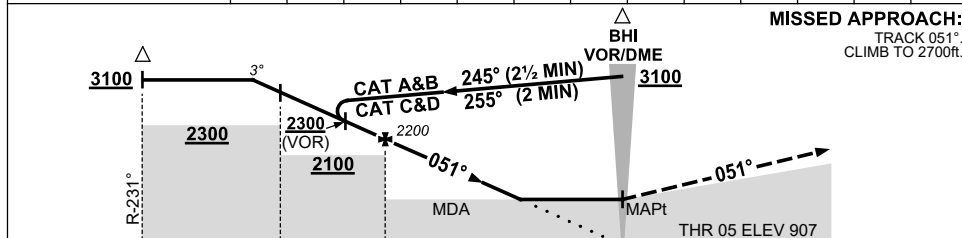
VOR RWY 05

5 SEP 2024

**BROKEN HILL, NSW (YBHI)**



DIST TO BHI DME	7.8	7	6	5	4	3	2.9						
ALT (3° APCH PATH)	3100	2840	2520	2200	1890	1570	1530						



NM TO BHI DME: 10, 7, 5, 0

**NOTES**

CATEGORY	A	B	C	D
S-I VOR		<b>1580</b> (673-3.8)		
S-I VOR/DME		<b>1530</b> (623-3.5)		
CIRCLING	<b>1770</b> (811-2.4)		<b>1880</b> (921-4.0)	<b>1880</b> (921-5.0)
ALTERNATE	(1311-4.4)		(1421-6.0)	(1421-7.0)

1. MAX IAS:  
BASE TURN : 210KT
2. SCALLOPING MAY OCCUR ON FINAL.

Changes: CIRCLING MINIMA, Editorial.

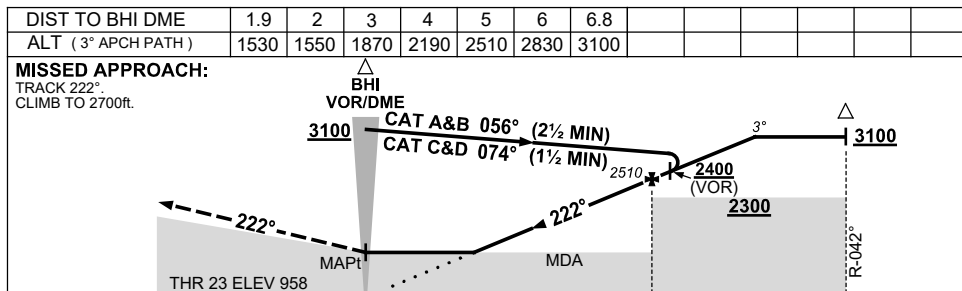
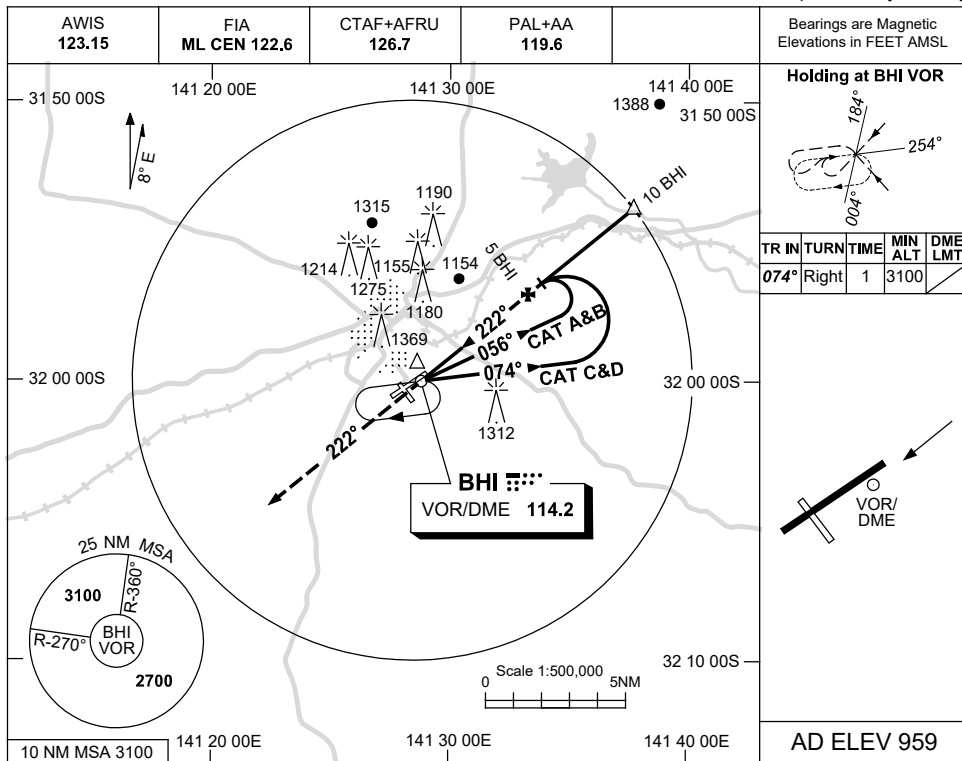
BHIVO01-180

USE QNH

VOR RWY 23

5 SEP 2024

**BROKEN HILL, NSW (YBHI)**



**NOTES**

CATEGORY	A	B	C	D
S-I VOR		<b>1710 (751-4.3)</b>		
S-I VOR/DME		<b>1530 (571-3.2)</b>		
CIRCLING	<b>1770 (811-2.4)</b>		<b>1880 (921-4.0)</b>	<b>1880 (921-5.0)</b>
ALTERNATE	(1311-4.4)		(1421-6.0)	(1421-7.0)

1. MAX IAS:  
BASE TURN : 210KT
2. SCALLOPING MAY OCCUR ON FINAL.

Changes: CIRCLING MINIMA, Editorial.

BHIVO02-180