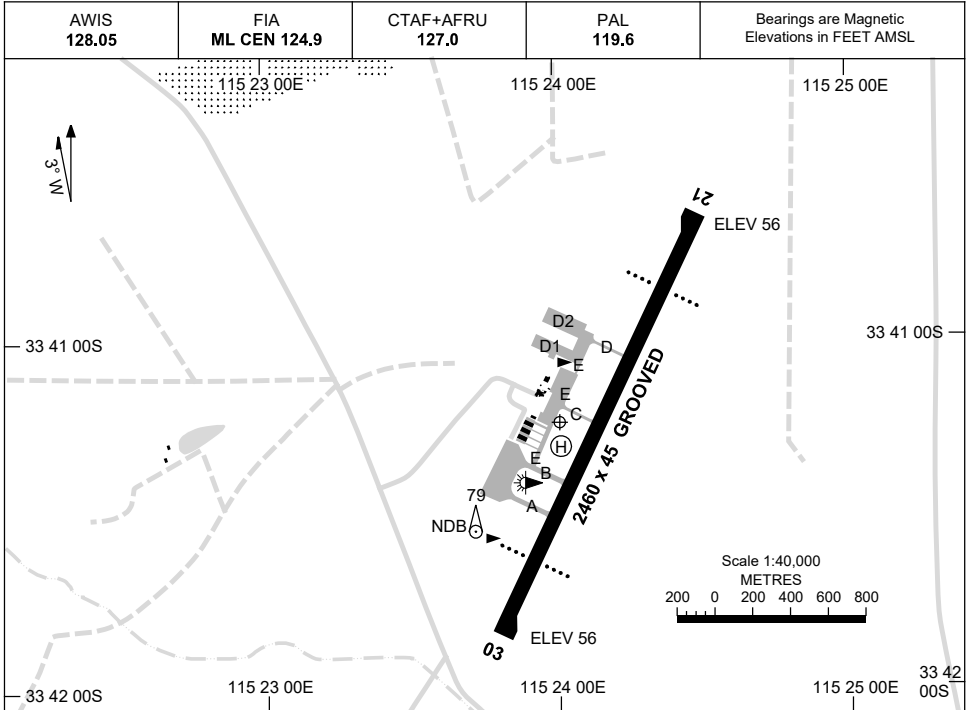


13 JUN 2024

AD ELEV 56
33 41 14S 115 24 01E

AERODROME CHART
BUSSELTON, WA (YBLN)



	AERODROME LIGHTING
RWY	TAXIWAY : BLUE EDGE RL : PAL 119.6 , SDBY (25 SEC)
03 <small>028</small>	PAPI 3.0° 65FT LIRL
<small>208</small> 21	PAPI 3.0° 65FT LIRL

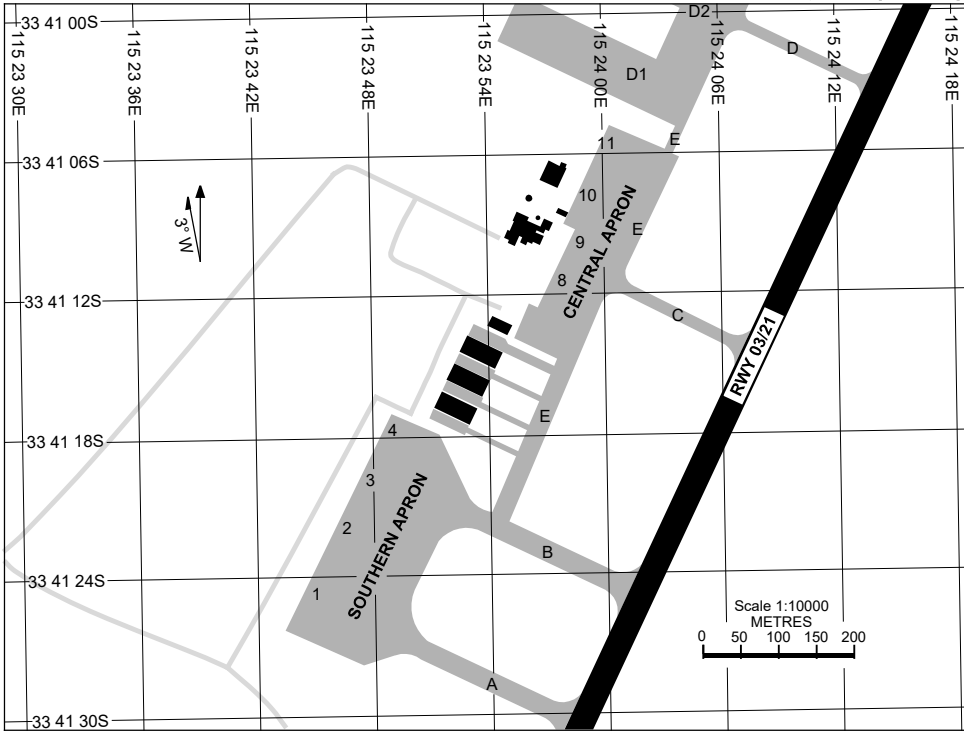
NOTES

1. FIA FREQ 124.9 AVBL CIRCUIT AREA.
2. PAL RQ THREE-THREE SECOND PULSES TO ACTIVATE.

Changes: NOTE 2, Editorial.

BLNAD01-179

24 MAR 2022



PARKING POSITION INFORMATION

STAND	CO-ORDINATES		ELEV (ft)	CAPACITY	HYDRANT FUEL
1	33 41 24.76S	115 23 45.01E	54	A333/B789	JET A1
2	33 41 21.95S	115 23 46.61E	54	A321/B739	JET A1
3	33 41 19.85S	115 23 47.81E	54	A321/B739	JET A1
4	33 41 17.75S	115 23 49.02E	54	A321/B739	JET A1
8	33 41 11.31S	115 23 57.77E	55	A320/F100/B738	JET A1/Bowser
9	33 41 09.69S	115 23 58.69E	55	A320/F100	JET A1
10	33 41 07.55S	115 23 59.98E	56	A320/B738/B739	JET A1
11	33 41 05.55S	115 24 00.12E	57	A320/B738/B739	JET A1

GNSS ARRIVAL PROCEDURES BUSSELTON, WA (YBLN)

23 MAY 2019

AWIS 128.05	FIA ML CEN 124.9	CTAF+AFRU 127.0	PAL 119.6		Bearings are Magnetic Elevations in FEET AMSL
----------------	---------------------	--------------------	--------------	--	--

25 NM MSA

1900 BLN NDB 2400

B-220°

B-340°

REFERENCE WAYPOINT BLN NDB

BLN NDB 386

10 NM MSA 1900

AD ELEV 56

SECTOR A

MISSED APPROACH:

CLIMB ON TRACK TO 1000FT, THEN TURN AS APPROPRIATE TO TRACK 030° REFERENCE BLN NDB. CLIMB TO 2400FT.

NM TO BLN NDB	25	15	7	5	2	0											
CIRCLING MINIMA	A,B: 720-2.4			C: 880-4.0		D: 1140-5.0											
NM TO BLN NDB	3.9	3	2	1.5	1	0.7	0.2										
ALT (3° APCH PATH)	1900	1620	1300	1140	980	880	720										

SECTOR B

MISSED APPROACH:

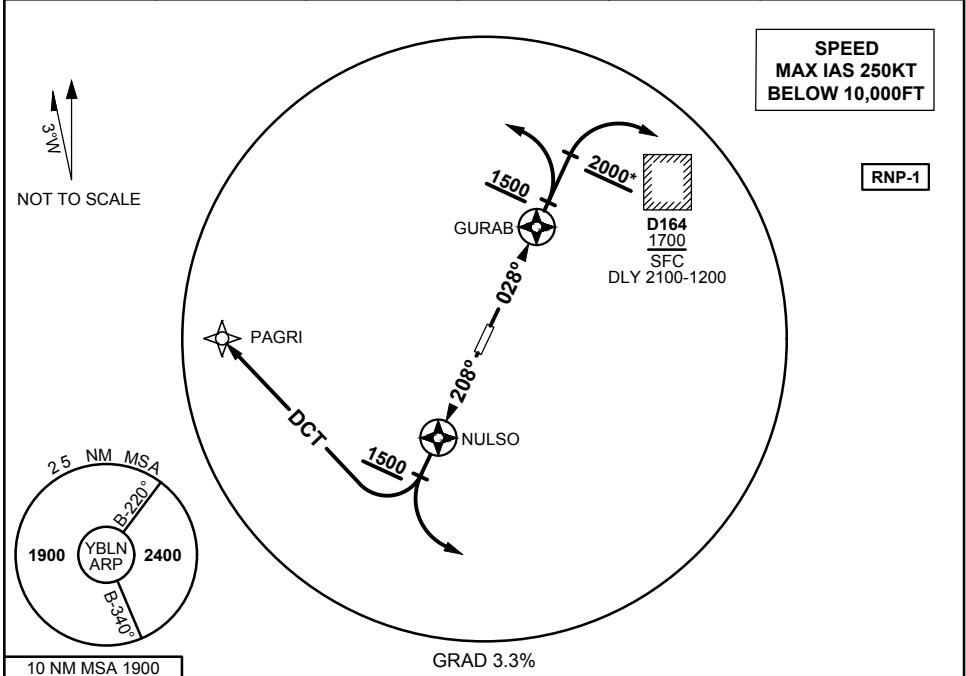
CLIMB ON TRACK TO 1900FT.

NM TO BLN NDB	25	17	15	7	5	2	0										
CIRCLING MINIMA	A,B: 720-2.4			C: 880-4.0		D: 1140-5.0											
NM TO BLN NDB	5.5	5	4	3	2	1.5	1	0.7	0.2								
ALT (3° APCH PATH)	2400	2250	1940	1620	1300	1140	980	880	720								

**STANDARD INSTRUMENT DEPARTURES (SID)
BUSSELTON ONE DEPARTURE (RNAV) - RWY 03 & 21
BUSSELTON, WA (YBLN)**

17 JUN 2021

AWIS 128.05	FIA ML CEN 124.9	CTAF + AFRU 127.0	PAL 119.6		Bearings are Magnetic Elevations in FEET AMSL
----------------	---------------------	----------------------	--------------	--	--



BUSSELTON ONE DEPARTURE (RNAV)

RWY 03 NORTH, SOUTH & WEST

- Track 028° to GURAB
- After passing GURAB **AND** NOT BLW 1500FT turn LEFT
- Intercept flight plan route

RWY 03 EAST

- *GRAD 4.0% to 2000FT IF **D164 ACT**
- Track 028° TO GURAB
- After passing GURAB **AND** NOT BLW 2000FT* turn RIGHT
- Intercept flight plan route

RWY 21 NORTH & WEST

- Track 208° to NULSO
- After passing NULSO **AND** NOT BLW 1500FT turn RIGHT DCT to PAGRI
- Intercept flight plan route

RWY 21 SOUTH & EAST

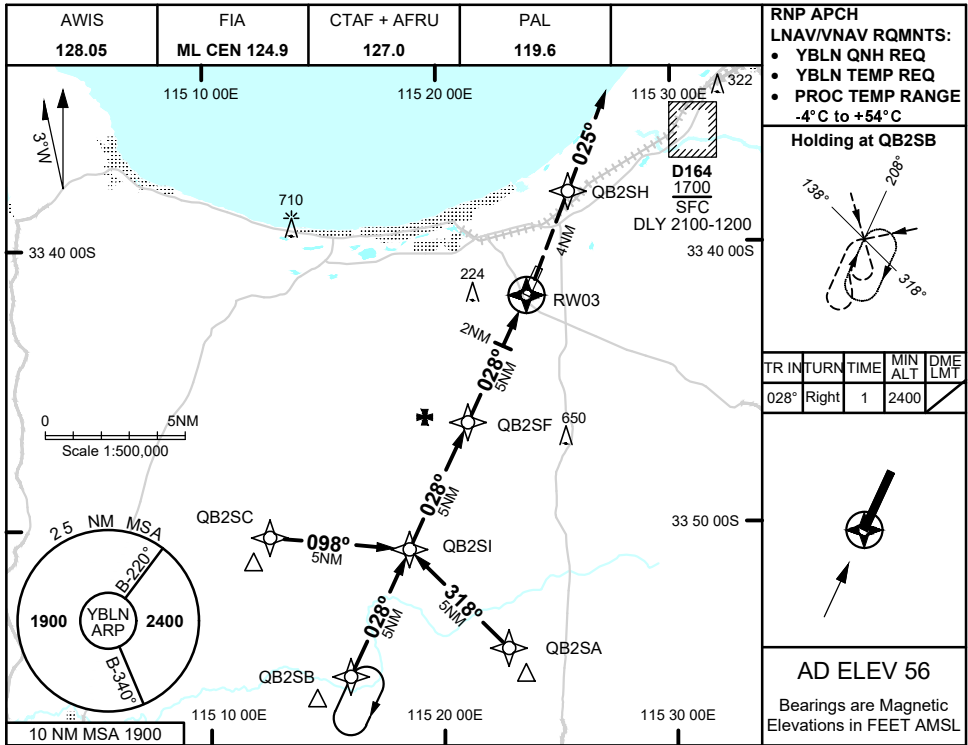
- Track 208° to NULSO
- After passing NULSO **AND** NOT BLW 1500FT turn LEFT
- Intercept flight plan route

Changes: DEP RWY 03 EAST

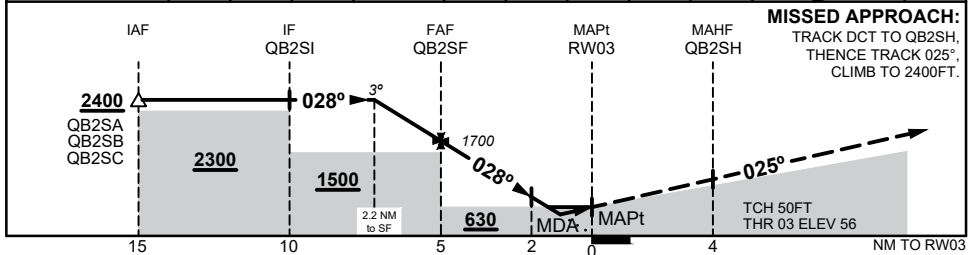
BLNDP01-167

BUSSELTON, WA (YBLN)

7 SEP 2023



NM TO NEXT WP	2.2	2	1	QB2SF	4	3	2	1.4	1	0.7	RW03
ALT (3° APCH PATH)	2400	2330	2020	1700	1380	1060	740	560	420	330	



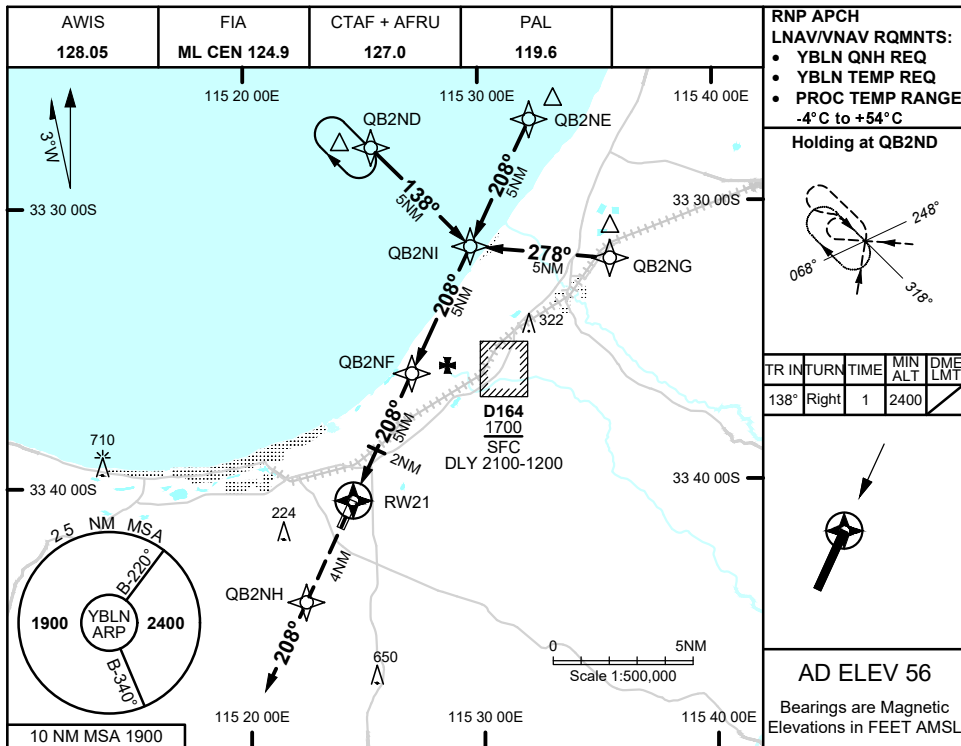
- NOTES**
- MAX IAS:
INITIAL : 210KTS

CATEGORY	A	B	C	D
LNAV/VNAV	330 (274 - 1.5)			
LNAV	560 (504 - 2.8)			
CIRCLING	710 (654 - 2.4)		1150 (1094 - 5.0)	
ALTERNATE	(1154 - 4.4)		(1594 - 7.0)	

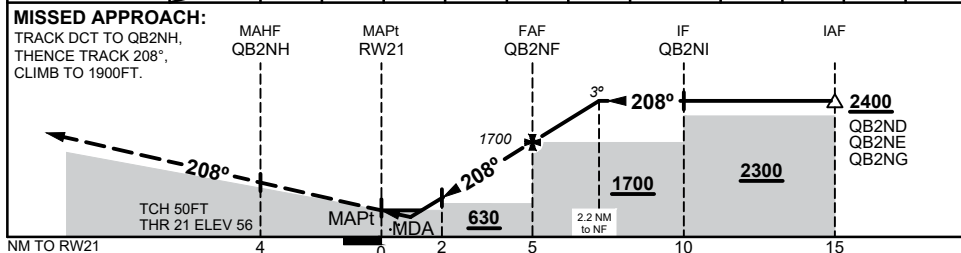
Changes: CHART TITLE, PBN SPECIFICATION

BLNGN01-176

7 SEP 2023



NM TO NEXT WP	RW21	0.6	1	1.4	2	3	4	QB2NF	1	2	2.2
ALT (3° APCH PATH)		310	420	560	740	1060	1380	1700	2020	2330	2400



CATEGORY	A	B	C	D
LNAV/VNAV	310 (254 - 1.5)			
LNAV	560 (504 - 2.8)			
CIRCLING	710 (654 - 2.4)		890 (834 - 4.0)	1150 (1094 - 5.0)
ALTERNATE	(1154 - 4.4)		(1334 - 6.0)	(1594 - 7.0)

Changes: CHART TITLE, PBN SPECIFICATION

BLNGN02-176

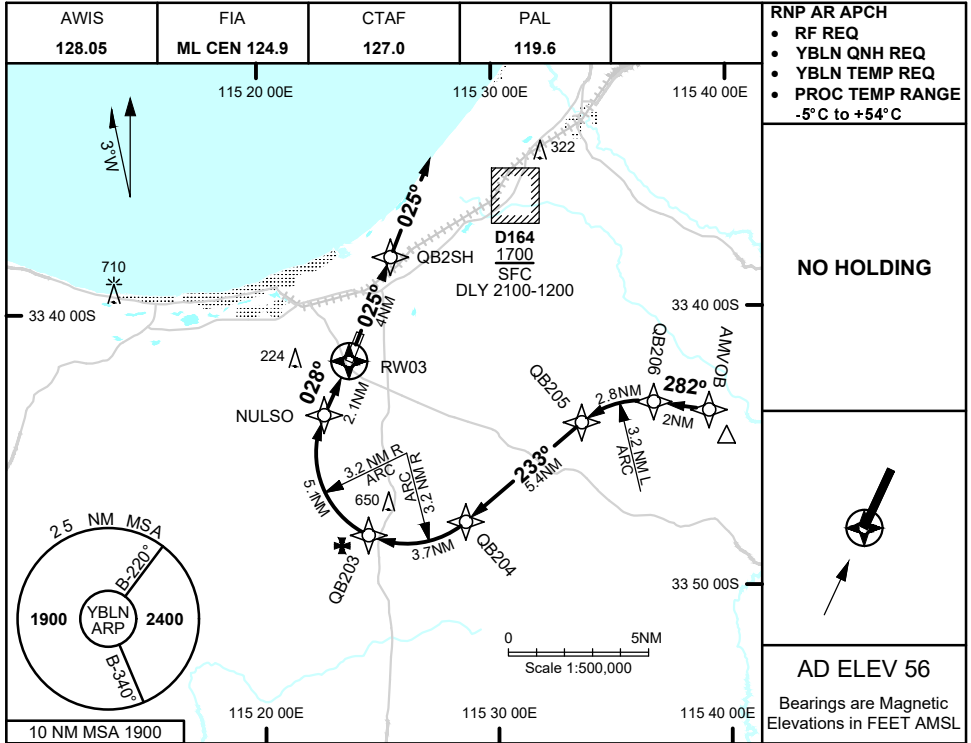
FOR CASA APPROVED OPERATORS ONLY

USE QNH

RNP X RWY 03 (AR)

BUSSELTON, WA (YBLN)

7 SEP 2023

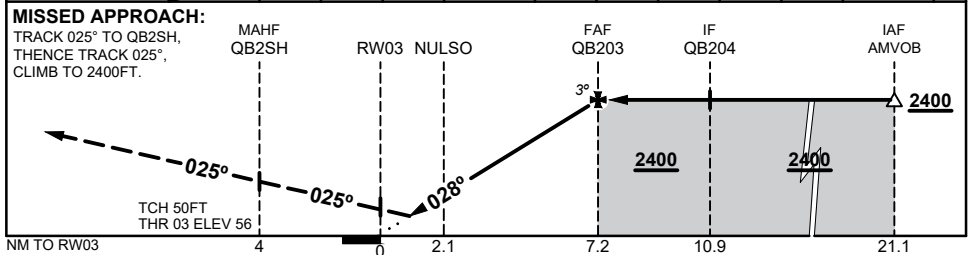


NO HOLDING

AD ELEV 56

Bearings are Magnetic
Elevations in FEET AMSL

NM TO NEXT WP	RW03	0.7	1	2	NULSO	1	2	3	4	5	QB203	
ALT (3° APCH PATH)		320	420	740	780	1100	1420	1740	2050	2370	2400	



NOTES
1. MAX IAS:
INITIAL : 215KTS

CATEGORY	A	B	C	D
RNP (0.3)	320 (264 - 1.5)			
CIRCLING	NOT AUTHORISED			
ALTERNATE	(1154 - 4.4)		(1334 - 6.0) (1594 - 7.0)	

Changes: CHART TITLE, PBN SPECIFICATION BLNGN03-176

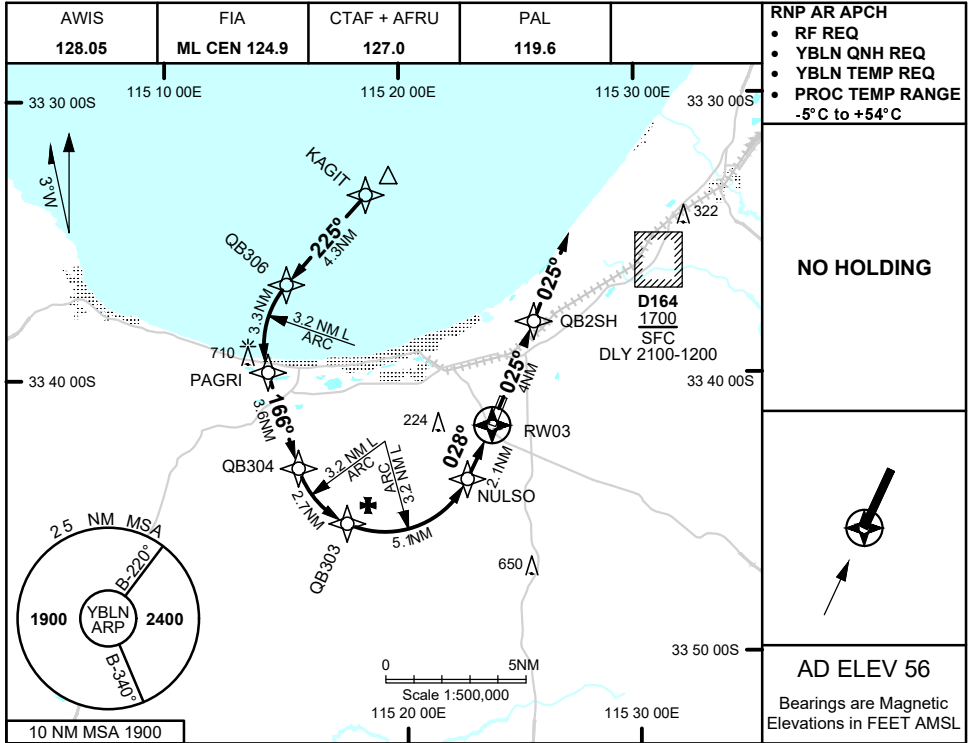
FOR CASA APPROVED OPERATORS ONLY

USE QNH

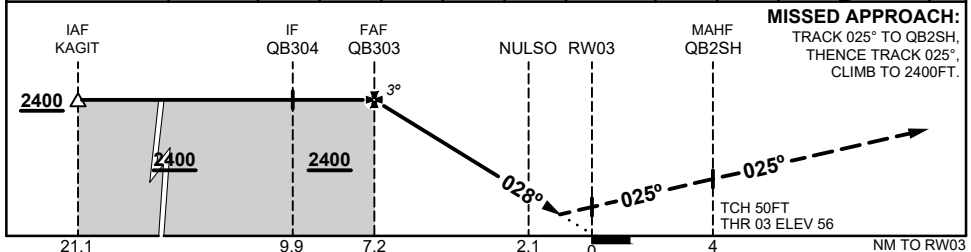
RNP W RWY 03 (AR)

BUSSELTON, WA (YBLN)

7 SEP 2023



NM TO NEXT WP	QB303	5	4	3	2	1	NULSO	2	1	0.7	RW03	
ALT (3° APCH PATH)	2400	2370	2050	1740	1420	1100	780	740	420	320		



NOTES

1. MAX IAS:
INITIAL : 215KTS

CATEGORY	A	B	C	D
RNP (0.3)	320 (264 - 1.5)			
CIRCLING	NOT AUTHORISED			
ALTERNATE	(1154 - 4.4)		(1334 - 6.0) (1594 - 7.0)	

Changes: CHART TITLE, PBN SPECIFICATION

BLNGN04-176

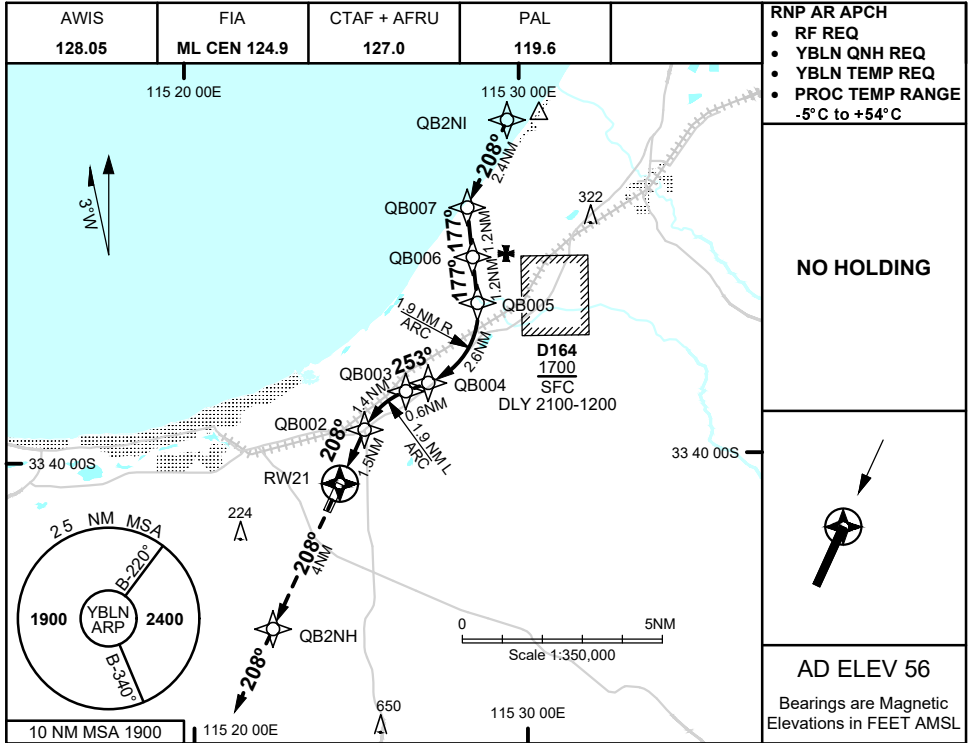
FOR CASA APPROVED OPERATORS ONLY

USE QNH

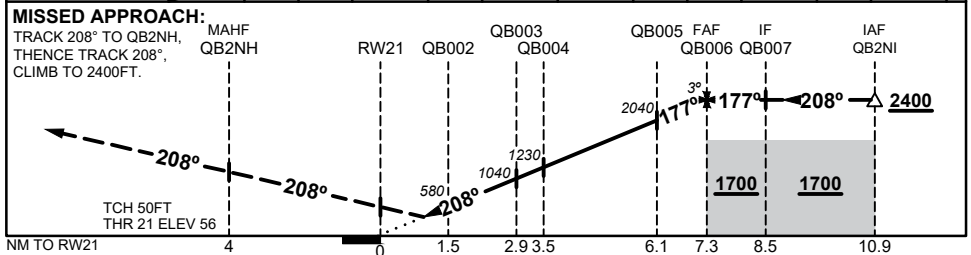
RNP X RWY 21 (AR)

BUSSELTON, WA (YBLN)

7 SEP 2023



NM TO NEXT WP	RW21	0.7	1	QB002	1	QB003	QB004	1	2	QB005	1	QB006
ALT (3° APCH PATH)		320	420	580	900	1040	1230	1550	1870	2040	2350	2400



NOTES

1. MAX IAS:
FINAL : 160KTS
2. RNP 0.3 RQ FM
QB007 TO RW21

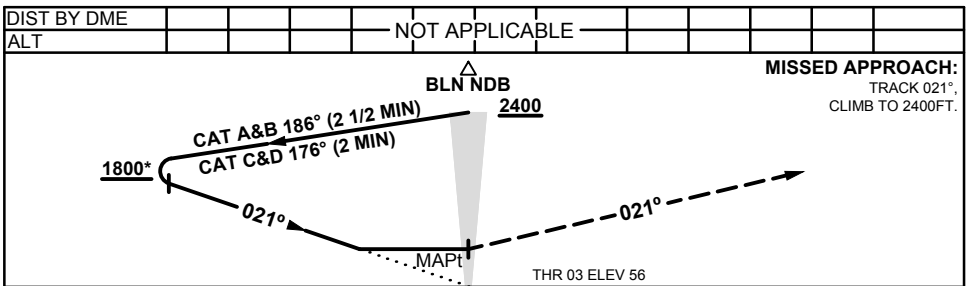
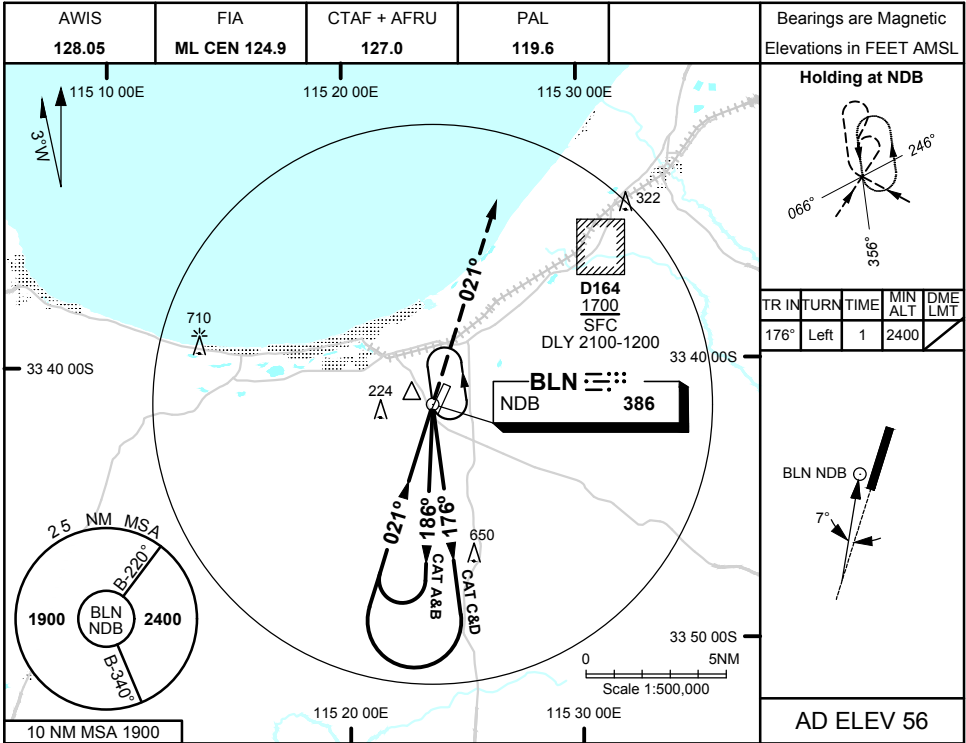
CATEGORY	A	B	C	D
RNP (0.30)	320 (264 - 1.5)			
CIRCLING	NOT AUTHORISED			
ALTERNATE	(1154 - 4.4)		(1334 - 6.0)	(1594 - 7.0)

Changes: CHART TITLE, PBN SPECIFICATION

BLNGN05-176

NDB RWY 03
BUSSELTON, WA (YBLN)

25 MAR 2021



NOTES

1. MAX IAS : INITIAL
 CAT A/B : 140KTS
 CAT C/D : 210KTS
- *2. CAT A/B 1700FT
 UNTIL ESTABLISHED
 INBOUND
- #3. CIRCLING VALUES
 ONLY APPLY TO
 THIS PROCEDURE

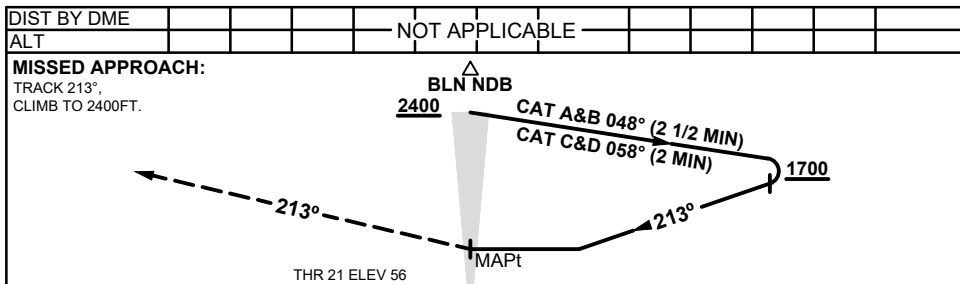
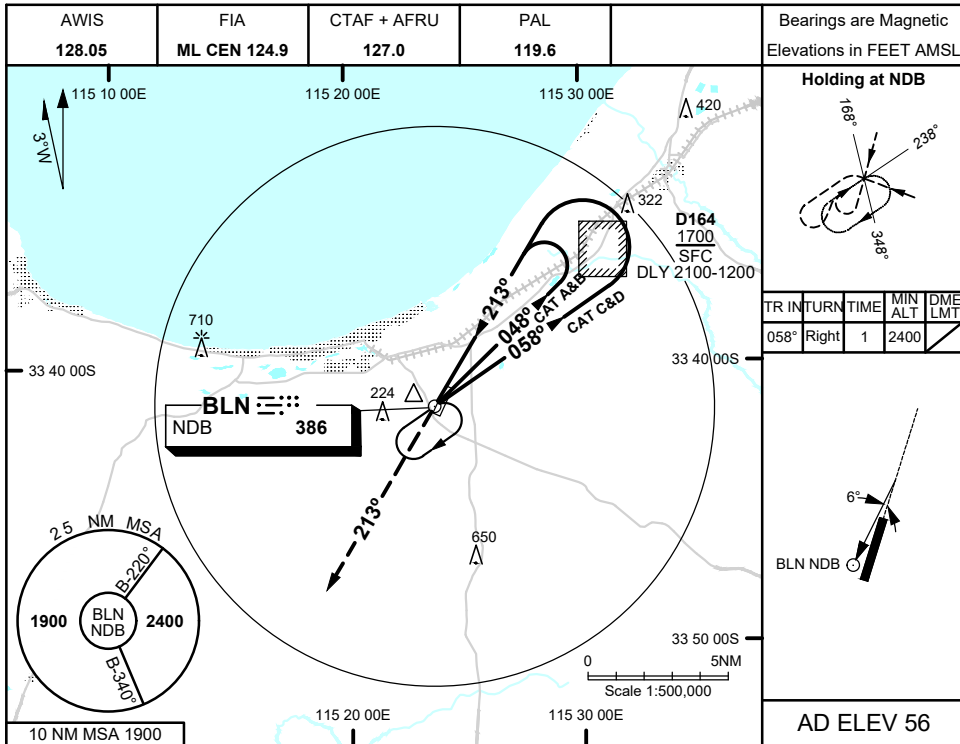
CATEGORY	A	B	C	D
S-I NDB	1090 (1034 - 5.0)			
CIRCLING#	1090 (1034 - 2.4)		1090 (1034 - 4.0)	1150 (1094 - 5.0)
ALTERNATE	(1534 - 4.4)		(1534 - 6.0)	(1594 - 7.0)

Changes: S-I NDB MINIMA, CAT A&B & CAT C CIRCLING & ALTERNATE
 MINIMA, INBOUND TRACK, MSA CENTRE, LOGO, Editorial

BLNNB01-166

NDB RWY 21
BUSSELTON, WA (YBLN)

21 MAR 2024



NOTES

- MAX IAS : INITIAL
 CAT A/B : 140KTS
 CAT C/D : 210KTS
- CAUTION:** WHEN
 D164 ACT, DO NOT
 DESCEND BLW 1700FT
 UNTIL ESTABLISHED

CATEGORY	A	B	C	D
S-I NDB	710 (654 - 3.7)			
CIRCLING	710 (654 - 2.4)		890 (834 - 4.0)	1150 (1094 - 5.0)
ALTERNATE	(1154 - 4.4)		(1334 - 6.0)	(1594 - 7.0)

Changes: S-I NDB MINIMA, OBST 420FT, Editorial

BLNNB02-178