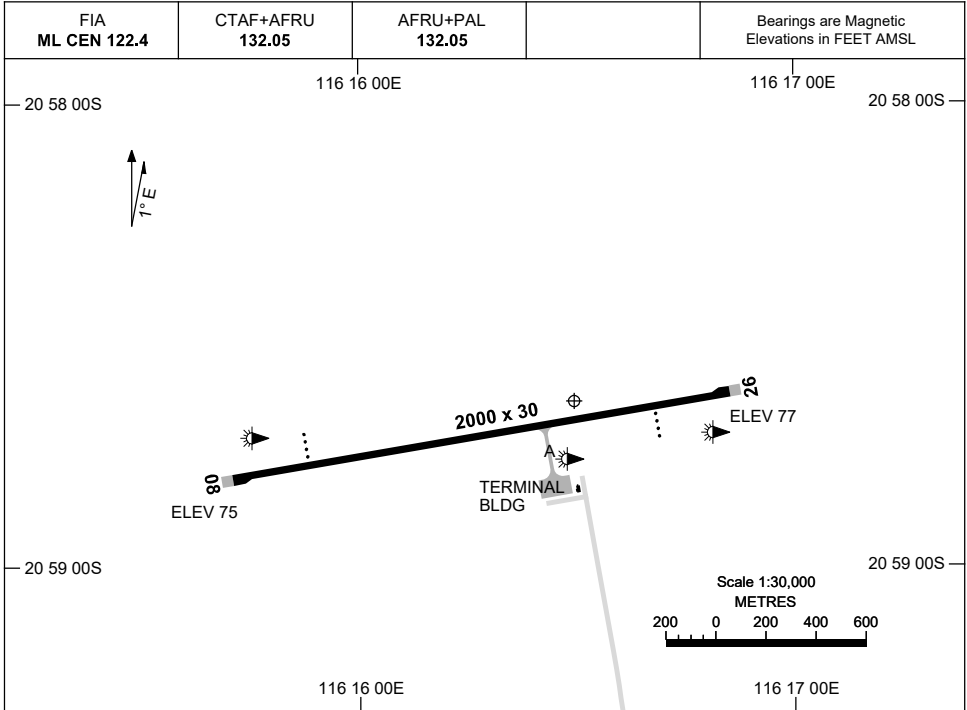


15 JUN 2023

AD ELEV 77  
20 58 38S 116 16 30E

AERODROME CHART  
**CAPE PRESTON, WA (YCPR)**



	<b>AERODROME LIGHTING</b>
<b>RWY</b>	TAXIWAY : BLUE EDGE RL : AFRU+PAL 132.05
<b>08</b> <small>079</small>	PAPI 3.0° 48.5FT LIRL
<small>259</small> <b>26</b>	PAPI 3.0° 48.5FT LIRL

**NOTES**

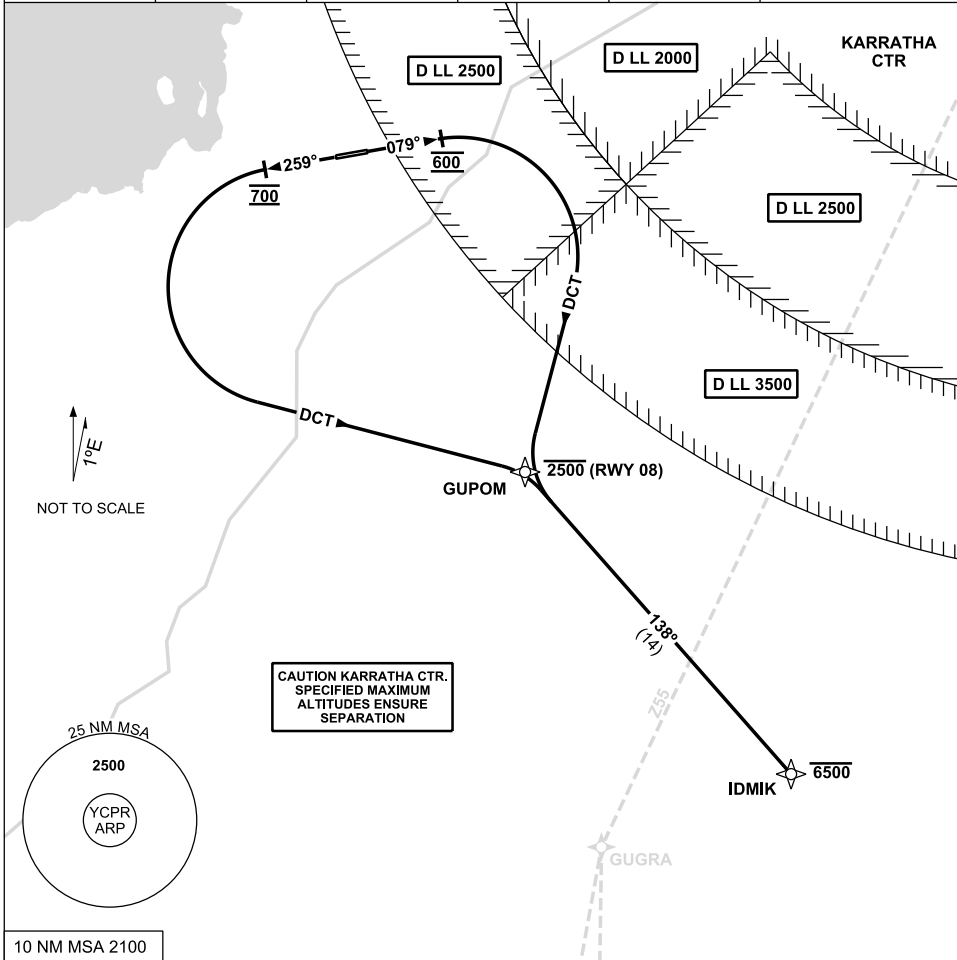
Changes: TERMINAL BLDG AND NOTES.

CPRAD01-175

STANDARD INSTRUMENT DEPARTURE (SID)  
 IDMIK ONE DEPARTURE (RNAV) - RWY 08 & 26  
**CAPE PRESTON, WA (YCPR)**

13 JUN 2024

FIA ML CEN 122.4	CTAF+AFRU 132.05	AFRU+PAL 132.05		Bearings are Magnetic Elevations in FEET AMSL
---------------------	---------------------	--------------------	--	--



**IDMIK ONE DEPARTURE (RNAV)**

**RWY 08**

- Track 079°
- **AT 600FT** turn **RIGHT** track DCT to GUPOM  
Cross GUPOM AT or BLW 2500FT
- Track 138° to IDMIK  
Cross IDMIK AT or BLW 6500FT
- Intercept flight planned route

**RWY 26**

- Track 259°
- **AT 700FT** turn **LEFT** track DCT to GUPOM
- Track 138° to IDMIK  
Cross IDMIK AT or BLW 6500FT
- Intercept flight planned route

Changes: WPT VETEL renamed GUGRA

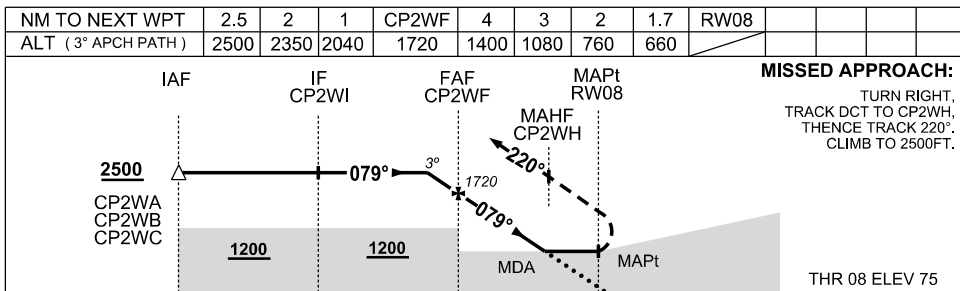
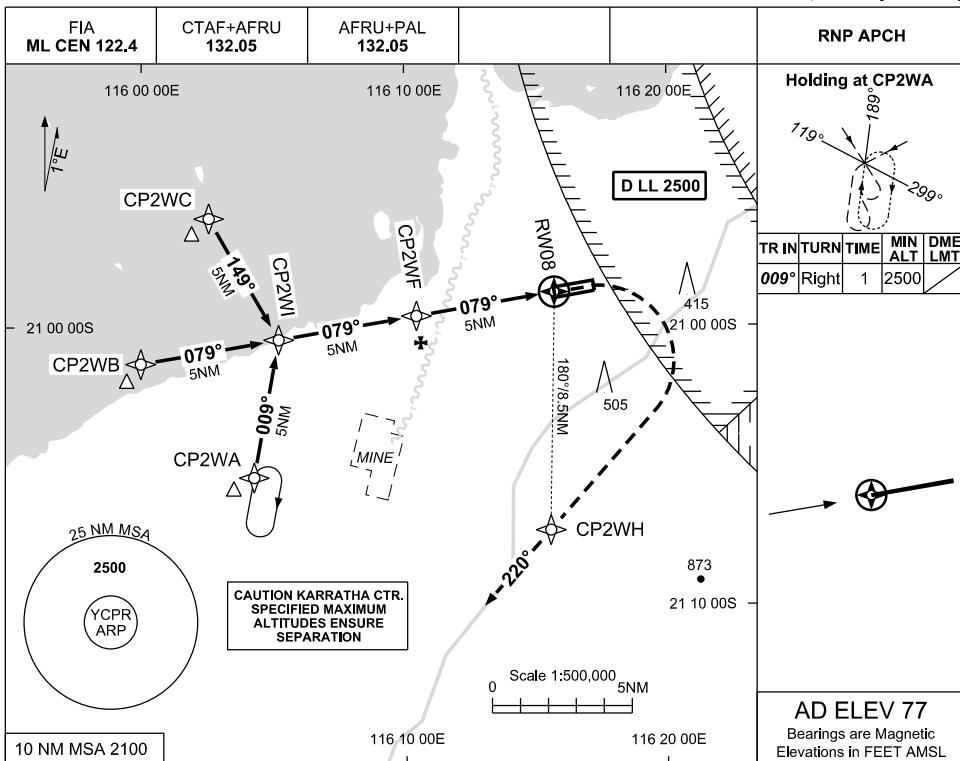
CPRDP01-179

USE QNH

RNP RWY 08

30 NOV 2023

CAPE PRESTON, WA (YCPR)



NOTES

- MAX IAS : INITIAL: 210KT MAP TURN: 210KT

CATEGORY	A	B	C	D
LNAV	660 (583-3.2)			NOT AUTHORISED
CIRCLING	850 (773-2.4)	1050(973-4.0)		
ALTERNATE	(1273-4.4)		(1473-6.0)	

Changes: CHART TITLE, WPT IDENT, EDITORIAL

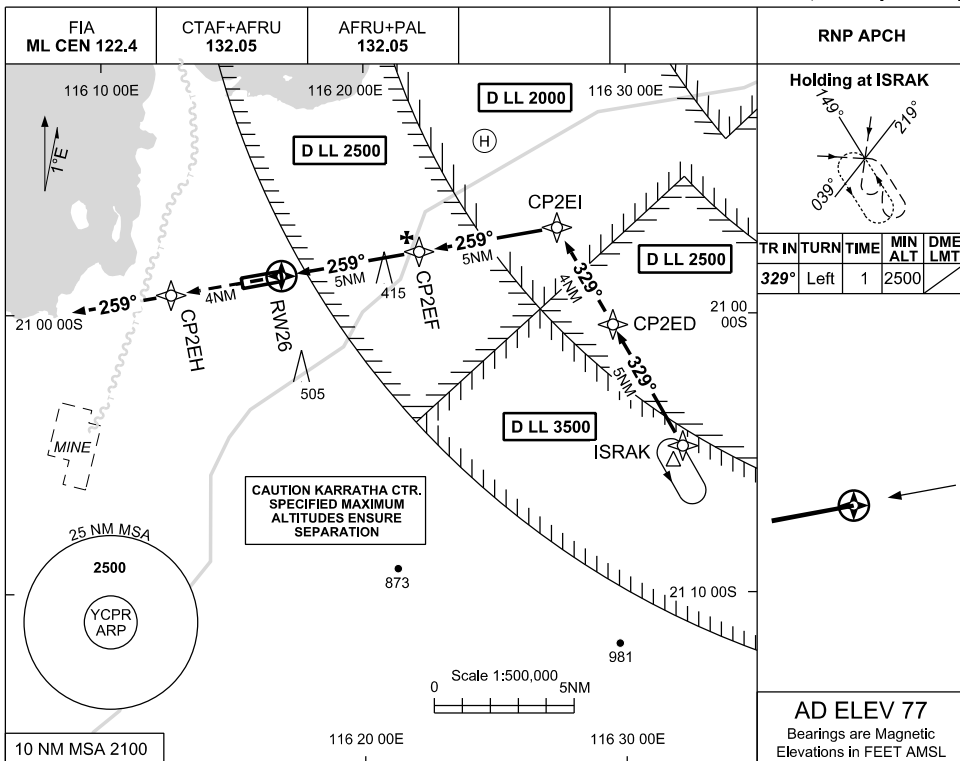
CPRGN01-177

USE QNH

RNP RWY 26

30 NOV 2023

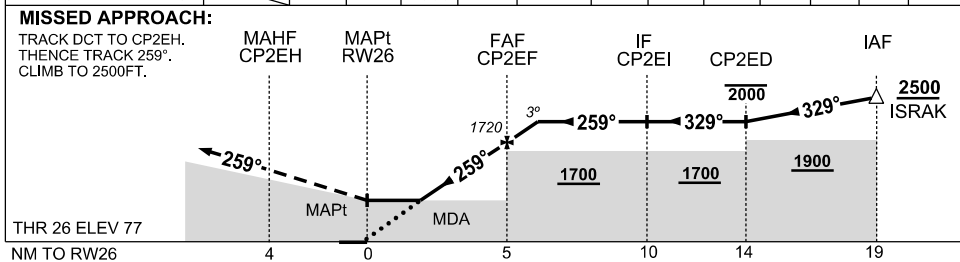
CAPE PRESTON, WA (YCPR)



TR	INTURN	TIME	MIN ALT	DME LMT
329°	Left	1	2500	

**AD ELEV 77**  
Bearings are Magnetic  
Elevations in FEET AMSL

NM TO NEXT WPT	RW26	1.5	2	3	4	CP2EF	0.9				
ALT (3° APCH PATH)		610	760	1080	1400	1720	2000				



**NOTES**

- MAX IAS :  
INITIAL: 210KT  
HOLDING: 210KT
- PROC OVERLAID BY KARRATHA CLASS D AIRSPACE . CLR RQ TO ENTER CTA
- HEL OPS 9NM ENE ARP (DEVILS CREEK)

CATEGORY	A	B	C	D
LNAV	610 (533-2.8)			NOT AUTHORISED
CIRCLING	850 (773-2.4)		1050(973-4.0)	
ALTERNATE	(1273-4.4)		(1473-6.0)	

Changes: CHART TITLE, WPT IDENT, EDITORIAL

CPRGN02-177

