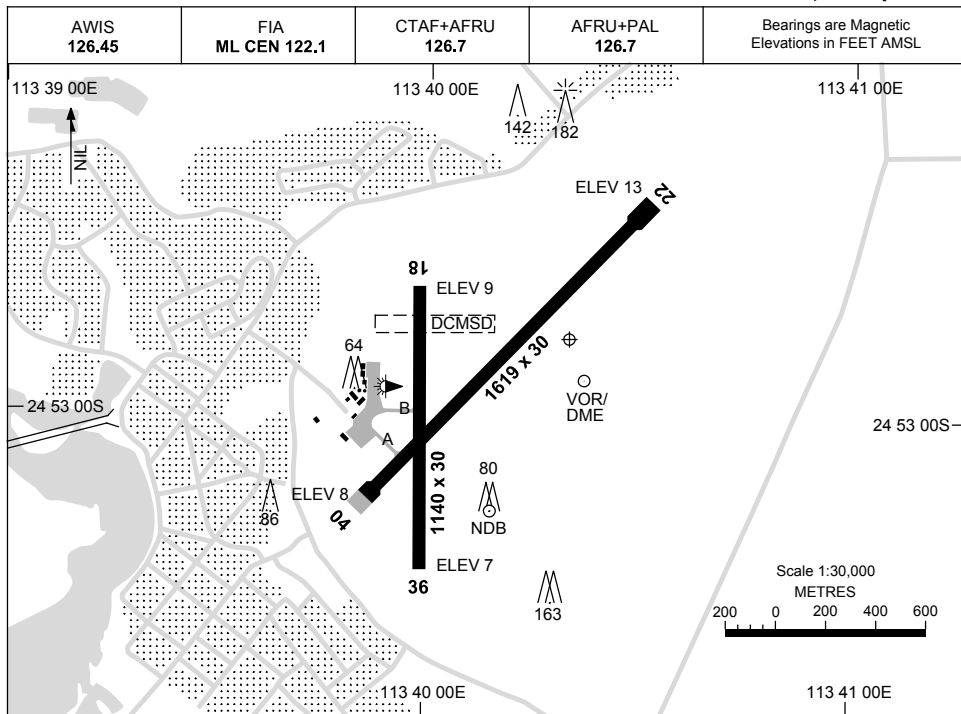


23 MAR 2023

AD ELEV 13  
24 52 50S 113 40 20E

AERODROME CHART  
**CARNARVON, WA (YCAR)**



<b>AERODROME LIGHTING</b>	
<b>RWY</b>	TAXIWAY : BLUE EDGE RL : AFRU+PAL 126.7 , SDBY (10 SEC)
<b>04</b> <small>044</small>	LIRL
<small>224</small> <b>22</b>	LIRL
<b>18</b> <small>180</small>	NIL
<small>360</small> <b>36</b>	NIL

**NOTES**

Changes: RWY 04/22 IWI DCMSD, THR 04 ELEV, RWY 04/22 MAG BRG.

CARAD01-174

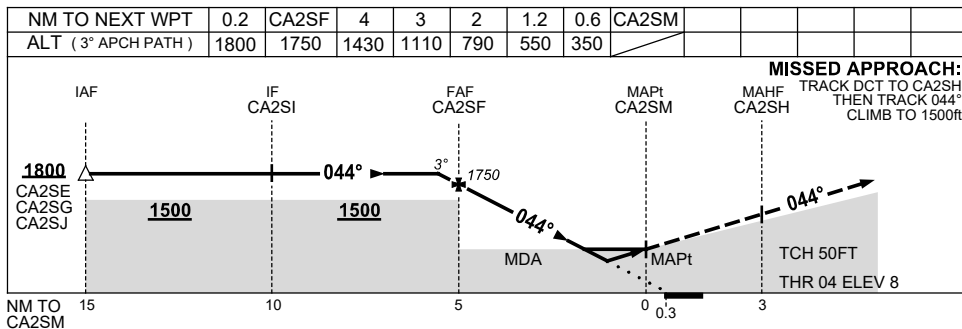
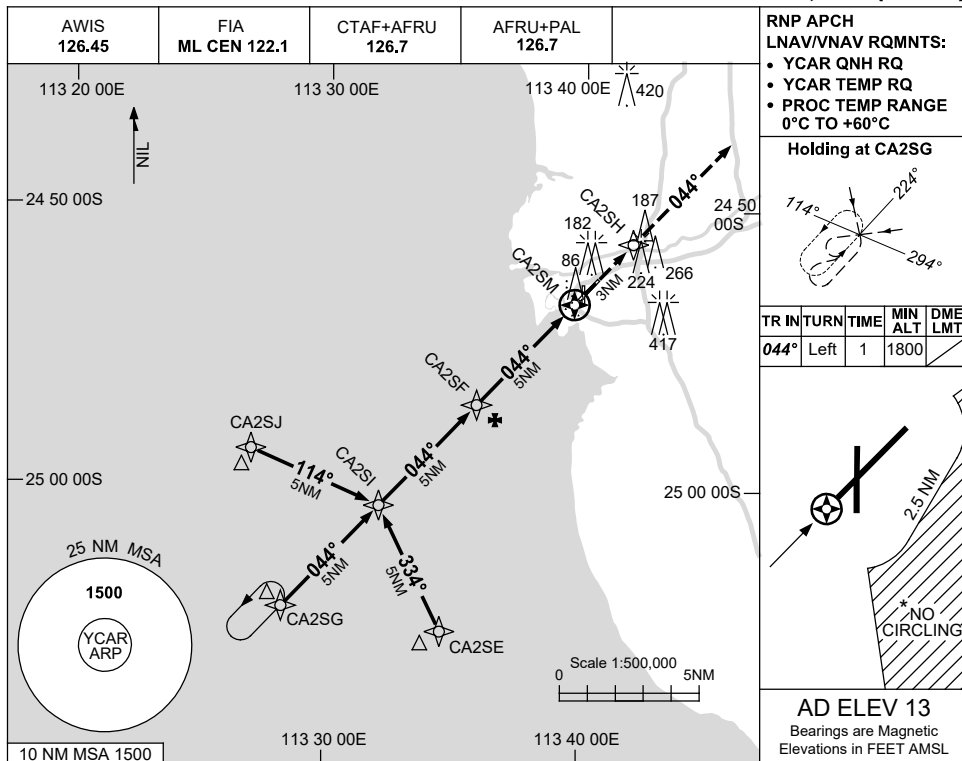


USE QNH

RNP RWY 04

21 MAR 2024

CARNARVON, WA (YCAR)



**NOTES**

CATEGORY	A	B	C	D
LNAV/VNAV		350 (342-1.9)		
LNAV		550 (537-3.0)		
CIRCLING *	670 (657-2.4)	760 (747-4.0)	810 (797-5.0)	
ALTERNATE	(1157-4.4)		(1297-7.0)	

- MAX IAS: INITIAL : 210KT.
- NO CIRCLING IN SECTOR EAST OF RWY 22 & RWY 36 BEYOND 2.5NM.

Changes: CIRCLING MINIMA, 420FT TOWER, 266FT TOWER.

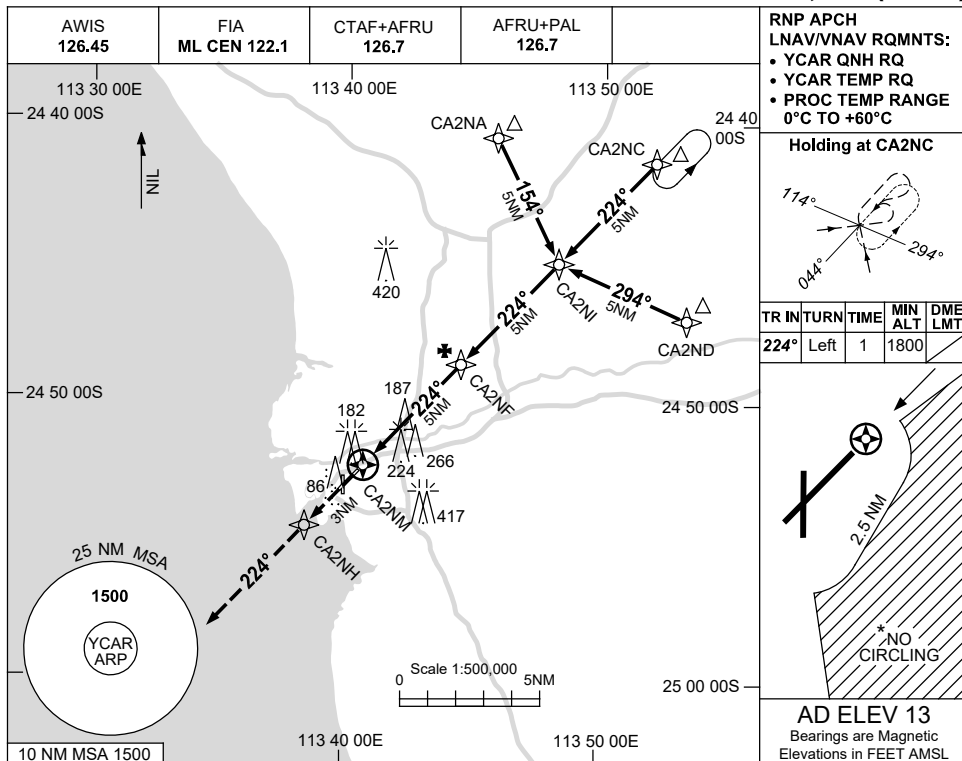
CARGN01-178

USE QNH

RNP RWY 22

21 MAR 2024

CARNARVON, WA (YCAR)



**RNP APCH LNAV/VNAV RQMNTS:**

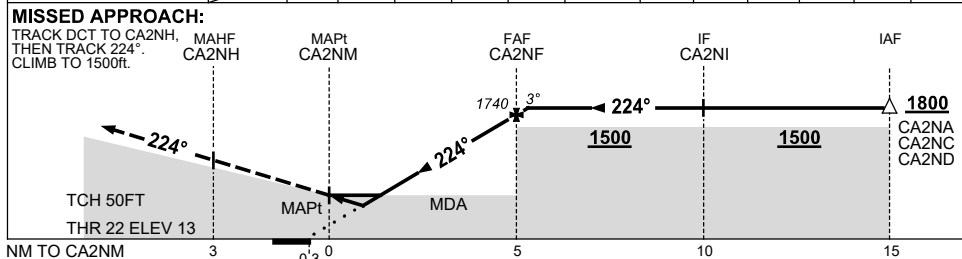
- YCAR QNH RQ
- YCAR TEMP RQ
- PROC TEMP RANGE 0°C TO +60°C

**Holding at CA2NC**

TR IN	TURN	TIME	MIN ALT	DME LMT
224°	Left	1	1800	

**AD ELEV 13**  
Bearings are Magnetic  
Elevations in FEET AMSL

NM TO NEXT WPT	CA2NM	0.6	1.2	2	3	4	CA2NF	0.2			
ALT ( 3° APCH PATH )		350	540	790	1100	1420	1740	1800			



**NOTES**

CATEGORY	A	B	C	D
LNAV/VNAV		350 (337-1.9)		
LNAV		540 (527-3.0)		
CIRCLING *	670 (657-2.4)		760 (747-4.0)	810 (797-5.0)
ALTERNATE	(1157-4.4)		(1247-6.0)	(1297-7.0)

1. MAX IAS: INITIAL : 210KT.
- \* 2. NO CIRCLING IN SECTOR EAST OF RWY 22 & RWY 36 BEYOND 2.5NM.

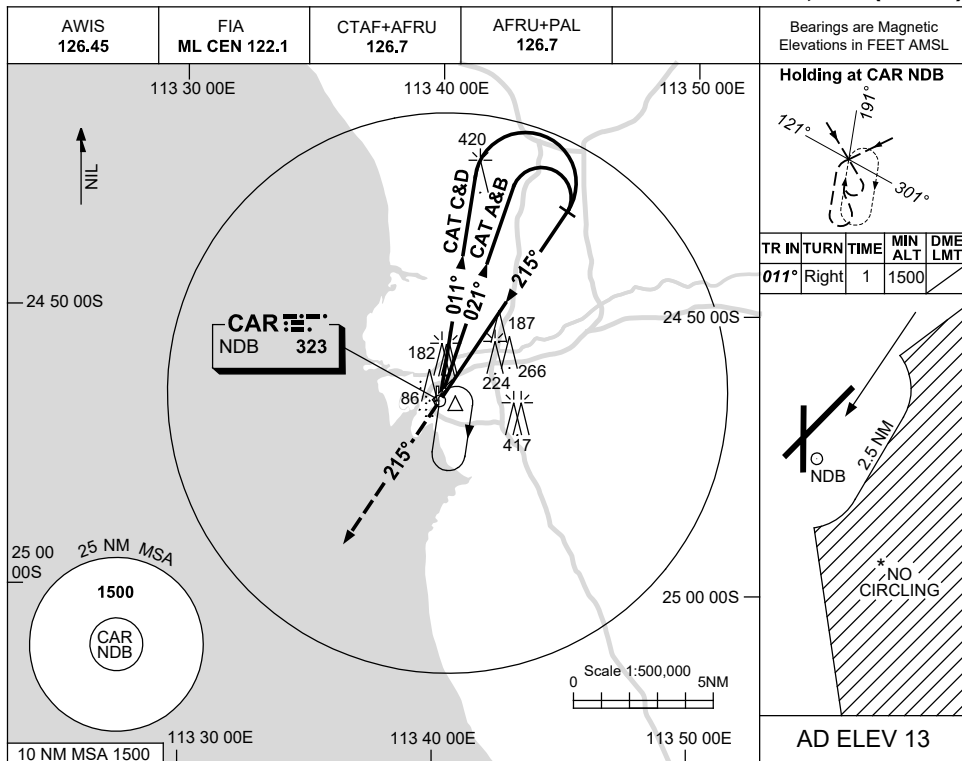
Changes: CIRCLING MINIMA, 420FT TOWER, 266FT TOWER.

CARGN02-178

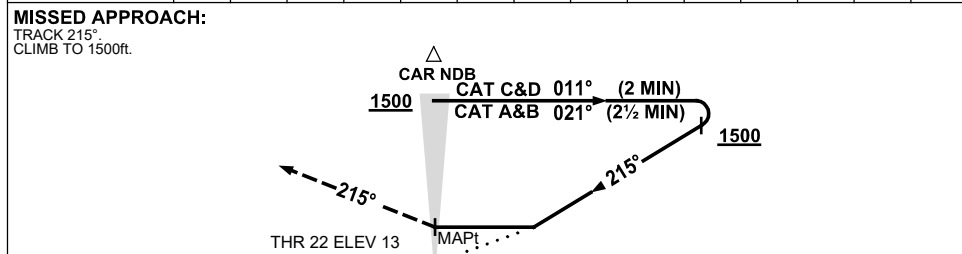
USE QNH

NDB RWY 22  
**CARNARVON, WA (YCAR)**

21 MAR 2024



DME DIST	NOT APPLICABLE									
ALT										



**NOTES**

1. MAX IAS:  
INITIAL : 210KT.
- \* 2. NO CIRCLING IN  
SECTOR EAST OF  
RWY 22 & RWY 36  
BEYOND 2.5NM.

CATEGORY	A	B	C	D
S-I NDB	<b>650</b> (637-3.6)			
CIRCLING *	<b>670</b> (657-2.4)	<b>760</b> (747-4.0)	<b>810</b> (797-5.0)	
ALTERNATE	(1157-4.4)		(1297-7.0)	

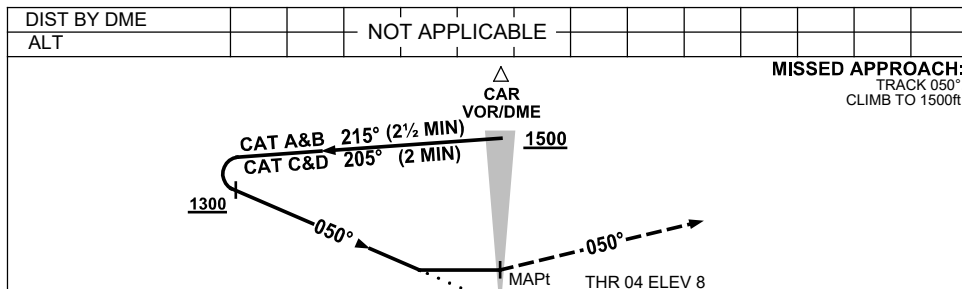
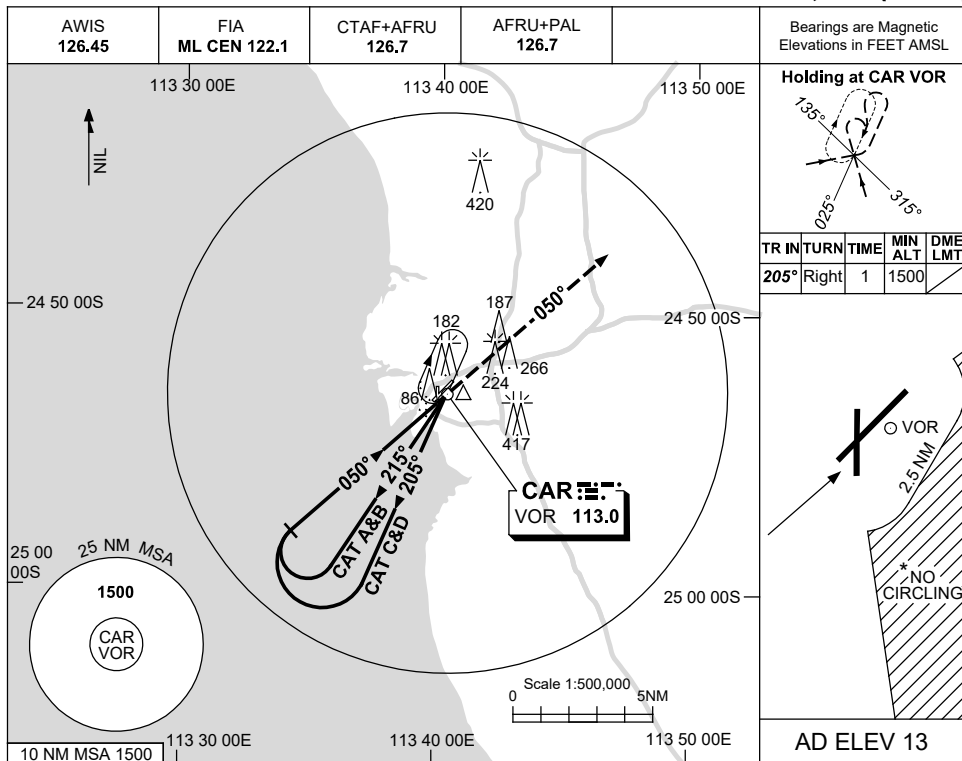
Changes: CIRCLING MINIMA, REVERSAL ALT, 420FT TOWER, 266FT TOWER.

CARNB01-178

USE QNH

VOR-Y RWY 04  
**CARNARVON, WA (YCAR)**

21 MAR 2024



NM TO CAR DME

**NOTES**

CATEGORY	A	B	C	D
S-I VOR	<b>600 (587-3.3)</b>			
CIRCLING *	<b>670 (657-2.4)</b>	<b>760 (747-4.0)</b>	<b>810 (797-5.0)</b>	
ALTERNATE	(1157-4.4)	(1247-6.0)	(1297-7.0)	

1. MAX IAS:  
INITIAL : 210KT.
- \* 2. NO CIRCLING IN  
SECTOR EAST OF  
RWY 22 & RWY 36  
BEYOND 2.5NM.

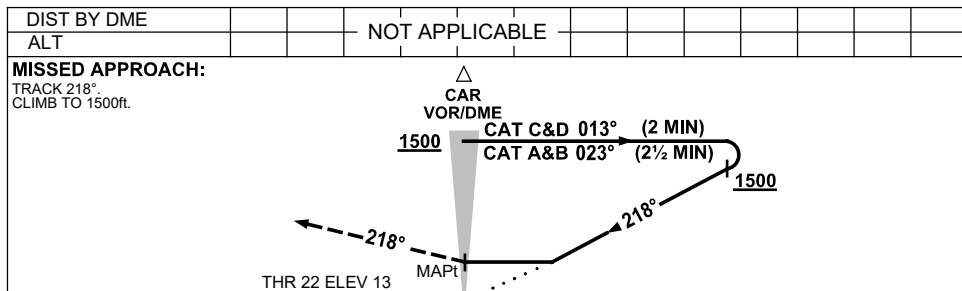
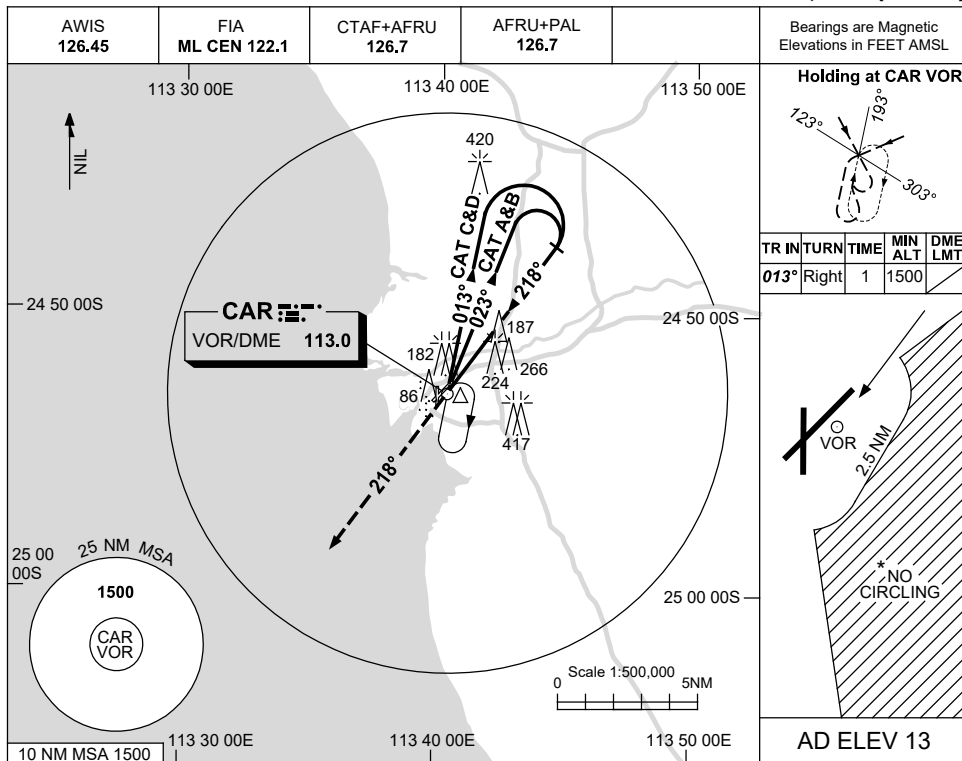
Changes: CIRCLING MINIMA, 420FT TOWER, 266FT TOWER.

CARVO01-178

USE QNH

VOR-Y RWY 22  
**CARNARVON, WA (YCAR)**

21 MAR 2024



**NOTES**

CATEGORY	A	B	C	D
S-I VOR	<b>630 (617-3.5)</b>			
CIRCLING*	<b>670 (657-2.4)</b>	<b>760 (747-4.0)</b>	<b>810 (797-5.0)</b>	
ALTERNATE	(1157-4.4)	(1247-6.0)	(1297-7.0)	

1. MAX IAS: INITIAL : 210KT.
- \* 2. NO CIRCLING IN SECTOR EAST OF RWY 22 & RWY 36 BEYOND 2.5NM.

Changes: CIRCLING MINIMA, REVERSAL ALT, 420FT TOWER, 266FT TOWER.

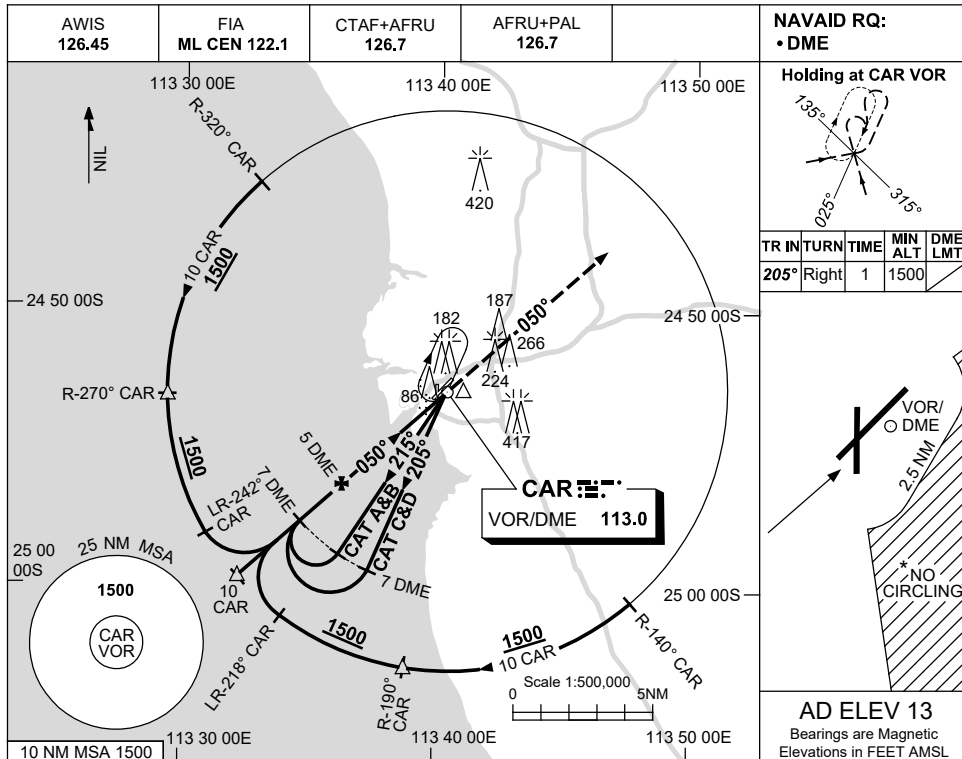
CARVO02-178

USE QNH

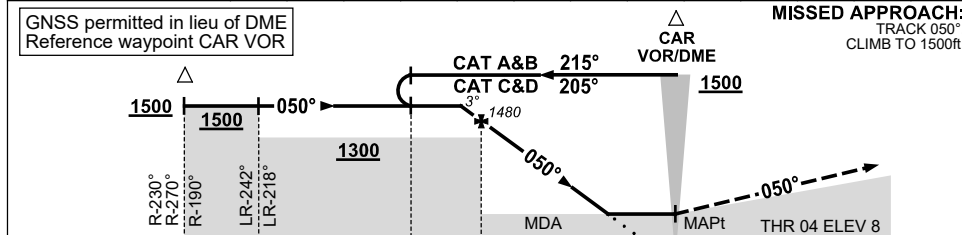
VOR-Z RWY 04

21 MAR 2024

CARNARVON, WA (YCAR)



DIST TO CAR DME	5.1	5	4	3	2.1										
ALT (3° APCH PATH)	1500	1480	1160	850	550										



CATEGORY	A	B	C	D
S-I VOR/DME	<b>550 (537-3.0)</b>			
CIRCLING *	<b>670 (657-2.4)</b>	<b>760 (747-4.0)</b>	<b>810 (797-5.0)</b>	
ALTERNATE	(1157-4.4)	(1247-6.0)	(1297-7.0)	

- NOTES**
- MAX IAS: INITIAL : 210KT.
  - NO CIRCLING IN SECTOR EAST OF RWY 22 & RWY 36 BEYOND 2.5NM.

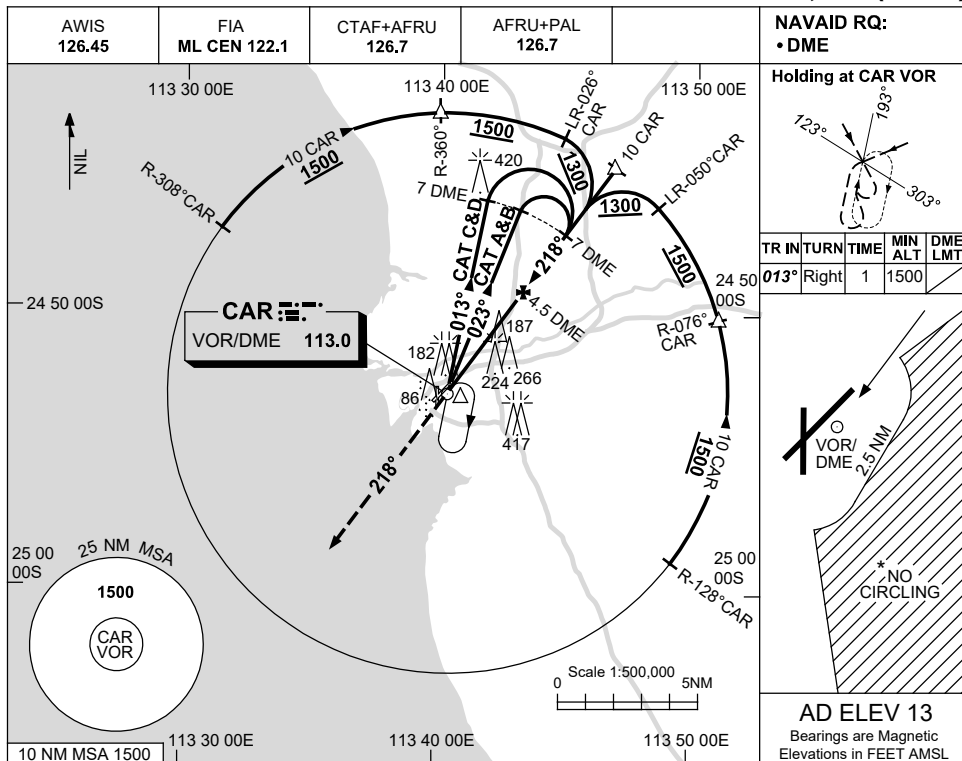
Changes: CIRCLING MINIMA, 420FT TOWER, 266FT TOWER. CARVO03-178



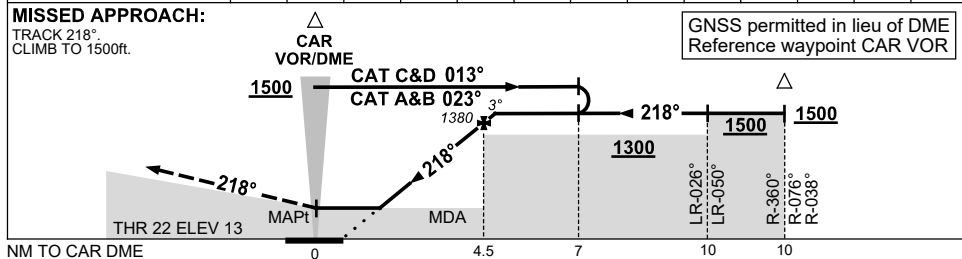
USE QNH

VOR-Z RWY 22  
**CARNARVON, WA (YCAR)**

21 MAR 2024



DIST TO CAR DME	2	3	4	4.9				
ALT (3° APCH PATH)	580	900	1220	1500				



**NOTES**

CATEGORY	A	B	C	D
S-I VOR/DME	<b>580 (567-3.2)</b>			
CIRCLING*	<b>670 (657-2.4)</b>	<b>760 (747-4.0)</b>	<b>810 (797-5.0)</b>	
ALTERNATE	(1157-4.4)	(1247-6.0)	(1297-7.0)	

1. MAX IAS: INITIAL : 210KT.
- \* 2. NO CIRCLING IN SECTOR EAST OF RWY 22 & RWY 36 BEYOND 2.5NM.

Changes: CIRCLING MINIMA, 420FT TOWER, 266FT TOWER.

CARV004-178