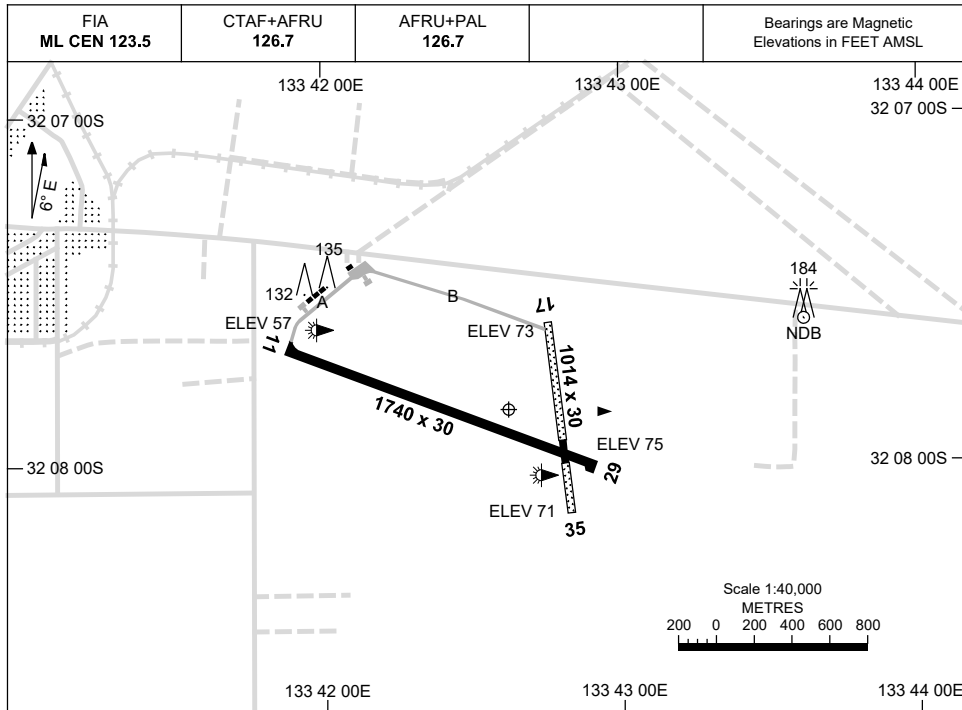


30 NOV 2023

AD ELEV 77
32 07 50S 133 42 35E

AERODROME CHART
CEDUNA, SA (YCDU)



	AERODROME LIGHTING	
RWY	TAXIWAY : BLUE EDGE (TWY A ONLY) RL : AFRU+PAL 126.7 , SDBY (15 SEC) , PTBL (EMERG ONLY, 90 MIN PN)	
11 ¹⁰⁵	LIRL PTBL	
285 29	LIRL PTBL	
17 ¹⁶⁸	PTBL	
348 35	PTBL	

NOTES

1. AWIS (PHONE) 08 8150 3801

Changes: AFRU+PAL

CDUAD01-177

GNSS ARRIVAL PROCEDURES CEDUNA, SA (YCDU)

21 MAR 2024

FIA ML CEN 123.5	CTAF+AFRU 126.7	AFRU+PAL 126.7		Bearings are Magnetic Elevations in FEET AMSL
---------------------	--------------------	-------------------	--	--

25 NM MSA
1800
CDU NDB
10 NM MSA 1800

REFERENCE WAYPOINT CDU NDB
AWIS (PHONE) 08 8150 3801

CDU NDB 293

AD ELEV 77

SECTOR A

NDB
1800
3°
1560
1000
MDA
MAPt
170°
1800

MISSED APPROACH:
TURN LEFT,
TRACK 170°. CLIMB TO 1800FT.

NM TO CDU NDB	25	15	9	5	0																
CIRCLING MINIMA	A,B: 850-2.4			C: 940-4.0		D: N/A															
NM TO CDU NDB	5.8	5	4	3.1	3.0	2.9	2.8														
ALT (3° APCH PATH)	1800	1560	1240	940	920	900	850														

SECTOR B

NDB
1800
3°
1500
1000
MDA
MAPt
050°
1800

MISSED APPROACH:
TRACK 050°. CLIMB TO 1800FT.

NM TO CDU NDB	25	15	10	5	0																
CIRCLING MINIMA	A,B: 780-2.4			C: 940-4.0		D: N/A															
NM TO CDU NDB	6	5	4	3.3	3	2.8															
ALT (3° APCH PATH)	1800	1500	1170	940	850	780															

SECTOR C

NDB
1800
3°
1550
1700
1000
MDA
MAPt
170°
1800

MISSED APPROACH:
TRACK 170°. CLIMB TO 1800FT.

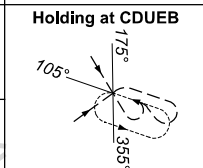
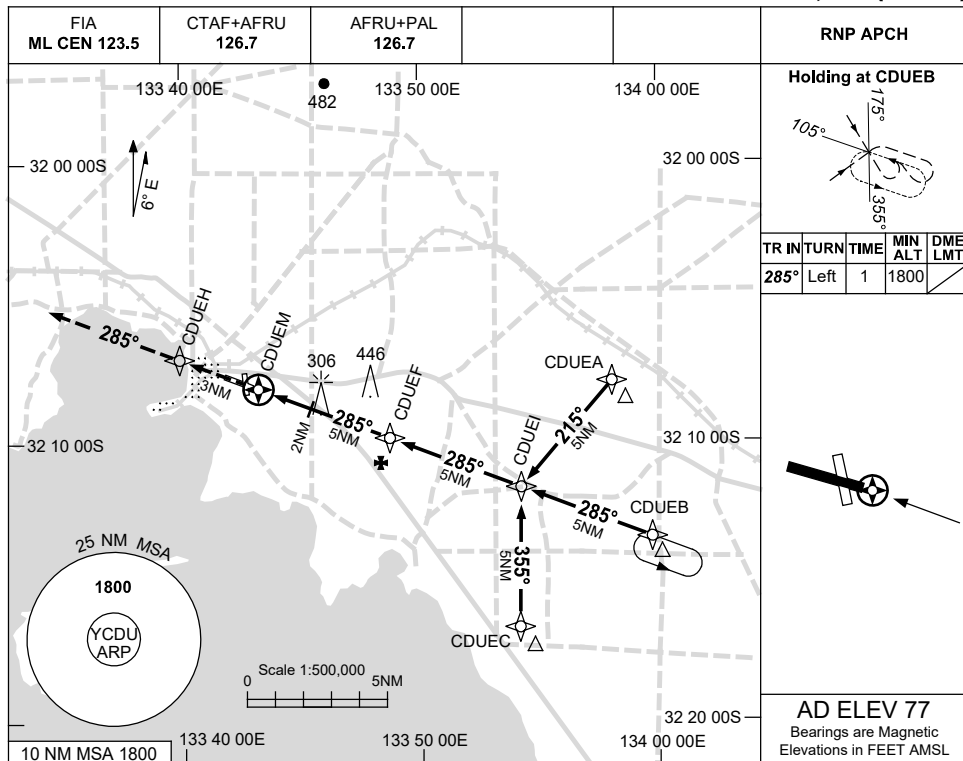
NM TO CDU NDB	25	15	8	6	5	0															
CIRCLING MINIMA	A,B: 800-2.4			C: 940-4.0		D: N/A															
NM TO CDU NDB	5.8	5	4	3.1	3	2.7															
ALT (3° APCH PATH)	1800	1550	1230	940	900	800															

Changes: SECT B CAT A, B, SECT C 6NM TO 5NM SEGMENT MINIMUM ALT, SECT BOUNDARIES. CDUDG01-178

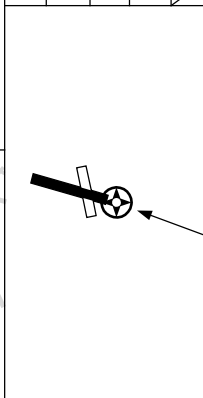
USE QNH

RNP RWY 29
CEDUNA, SA (YCDU)

21 MAR 2024

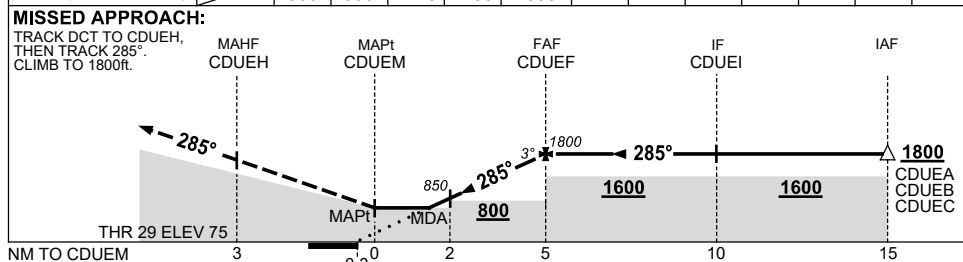


TR	IN	TURN	TIME	MIN ALT	DME LMT
285°	Left	1		1800	



AD ELEV 77
Bearings are Magnetic
Elevations in FEET AMSL

NM TO NEXT WPT	CDUEM	1.5	2	3	4	CDUEF			
ALT (3° APCH PATH)		680	850	1170	1490	1800			



NOTES

CATEGORY	A	B	C	D
LNAV	680 (603-3.4)			NOT APPLICABLE
CIRCLING	710 (633-2.4)	940 (863-4.0)		
ALTERNATE	(1133-4.4)		(1363-6.0)	

- MAX IAS: INITIAL : 210KT.
- AWIS (PHONE) 08 8150 3801.

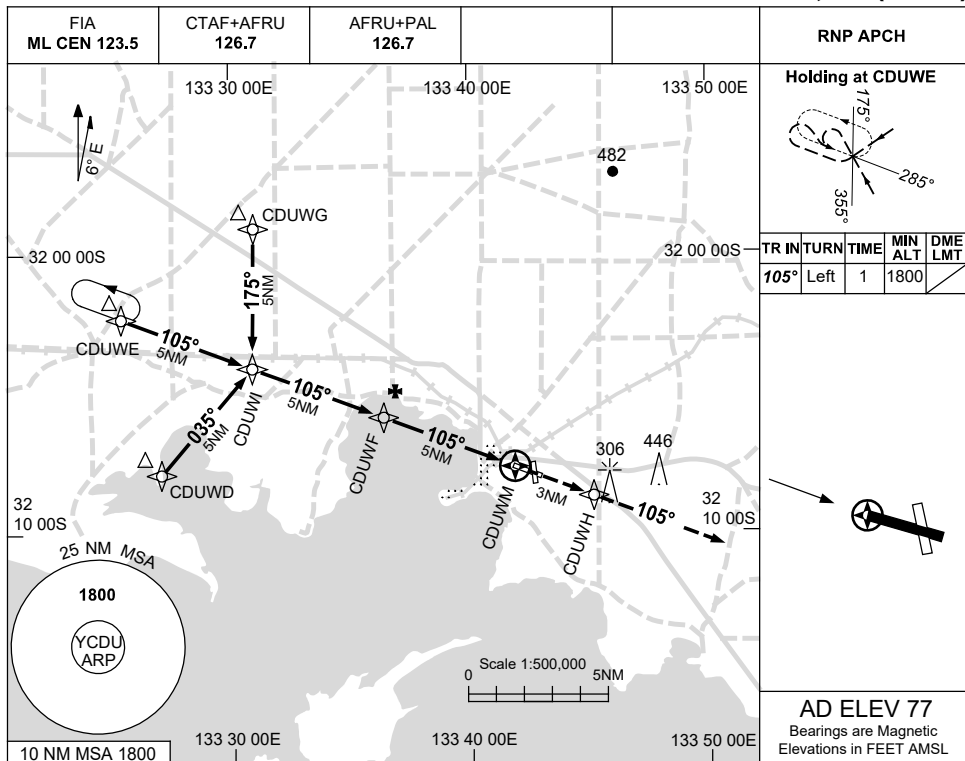
Changes: Editorial.

CDUGN01-178

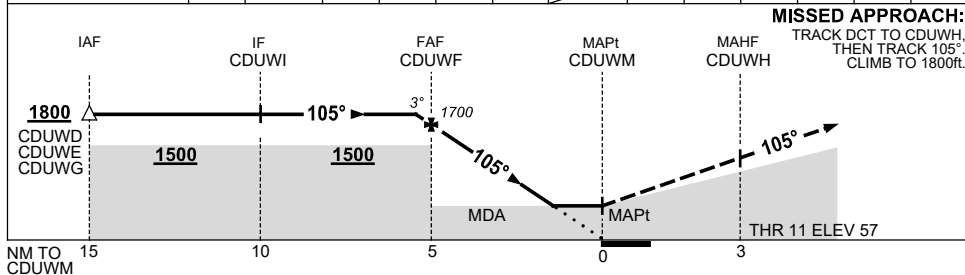
USE QNH

RNP RWY 11
CEDUNA, SA (YCDU)

21 MAR 2024



NM TO NEXT WPT	0.3	CDUWF	4	3	2	1.6	CDUWM				
ALT (3° APCH PATH)	1800	1700	1380	1060	740	610					



MISSED APPROACH:
TRACK DCT TO CDUWH,
THEN TRACK 105°.
CLIMB TO 1800ft.

NOTES

CATEGORY	A	B	C	D
LNAV	610 (553-3.1)			NOT APPLICABLE
CIRCLING	710 (633-2.4)	940 (863-4.0)		
ALTERNATE	(1133-4.4)	(1363-6.0)		

- MAX IAS: INITIAL : 210KT.
- AWIS (PHONE) 08 8150 3801.

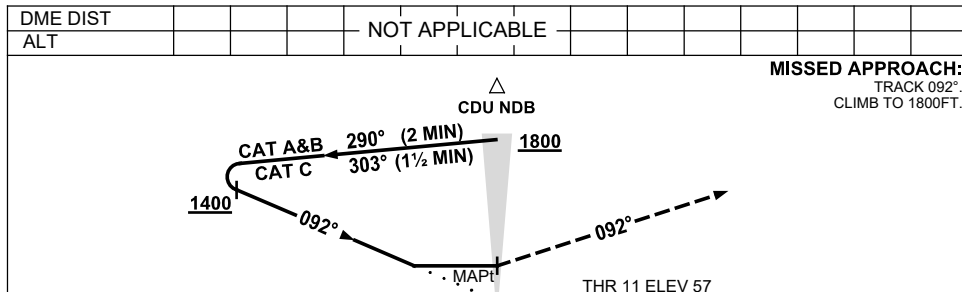
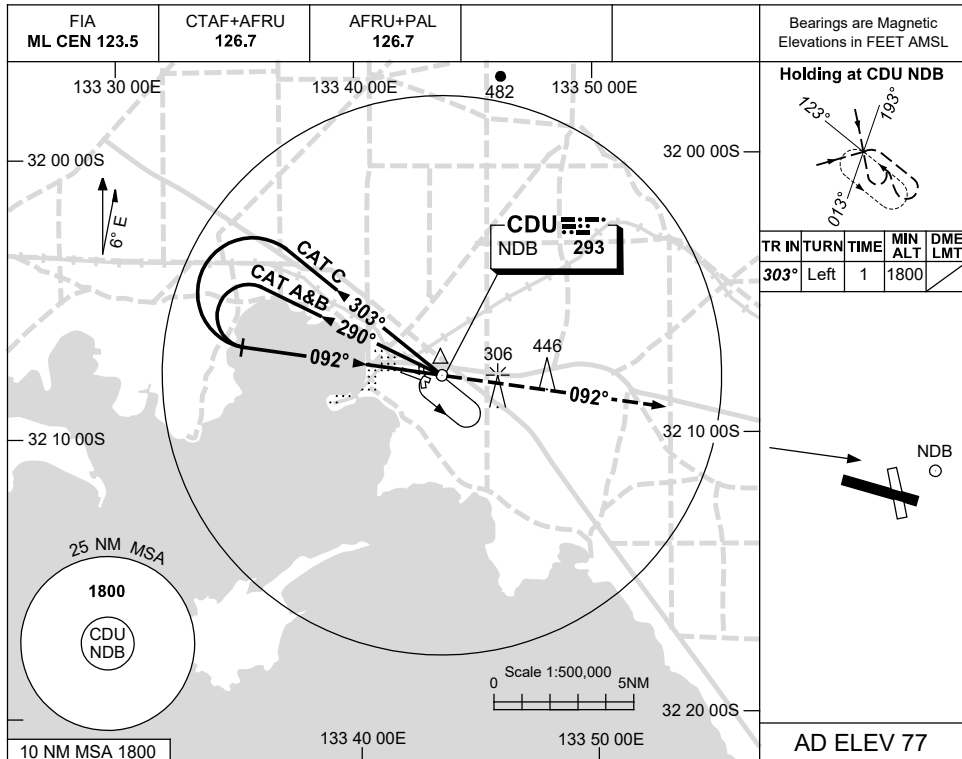
Changes: Editorial.

CDUGN02-178

USE QNH

NDB RWY 11
CEDUNA, SA (YCDU)

30 NOV 2023



NOTES

CATEGORY	A	B	C	D
S-I NDB	660 (603-3.4)			NOT APPLICABLE
CIRCLING	710 (633-2.4)	940 (863-4.0)		
ALTERNATE	(1133-4.4)		(1363-6.0)	

- MAX IAS:
INITIAL : 210KT.
- AWIS (PHONE)
08 8150 3801

Changes: AFRU+PAL.

CDUNB01-177