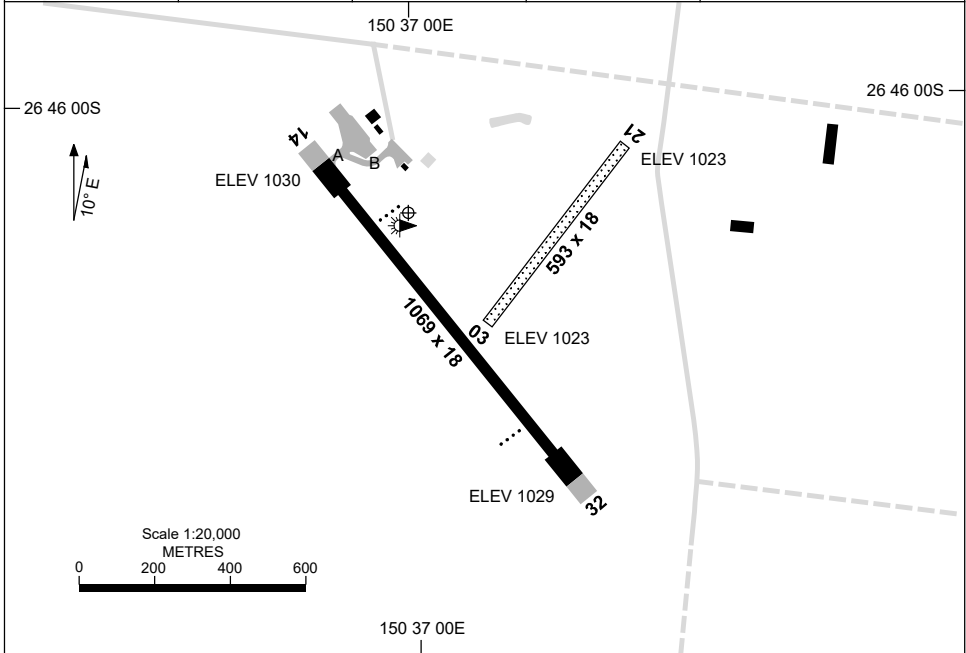


7 SEP 2023

AD ELEV 1030
26 46 10S 150 37 00E

AERODROME CHART
CHINCHILLA, QLD (YCCA)

AWIS 133.25	FIA BN CEN 123.95	CTAF+AFRU 126.35	PAL 121.3	Bearings are Magnetic Elevations in FEET AMSL
----------------	----------------------	---------------------	--------------	--



RWY		AERODROME LIGHTING
		TAXIWAY : BLUE EDGE ON TWY A RL : PAL 121.3
14 ¹³²		PAPI 3.0° 29FT LIRL RTIL
³¹² 32		PAPI 3.0° 29FT LIRL RTIL
03 ⁰²⁸		NIL
²⁰⁸ 21		NIL

NOTES

- FIA FREQ 123.95 AVBL IN CIRCUIT AREA.
- RTIL ACT HN.

Changes: NOTE 2.

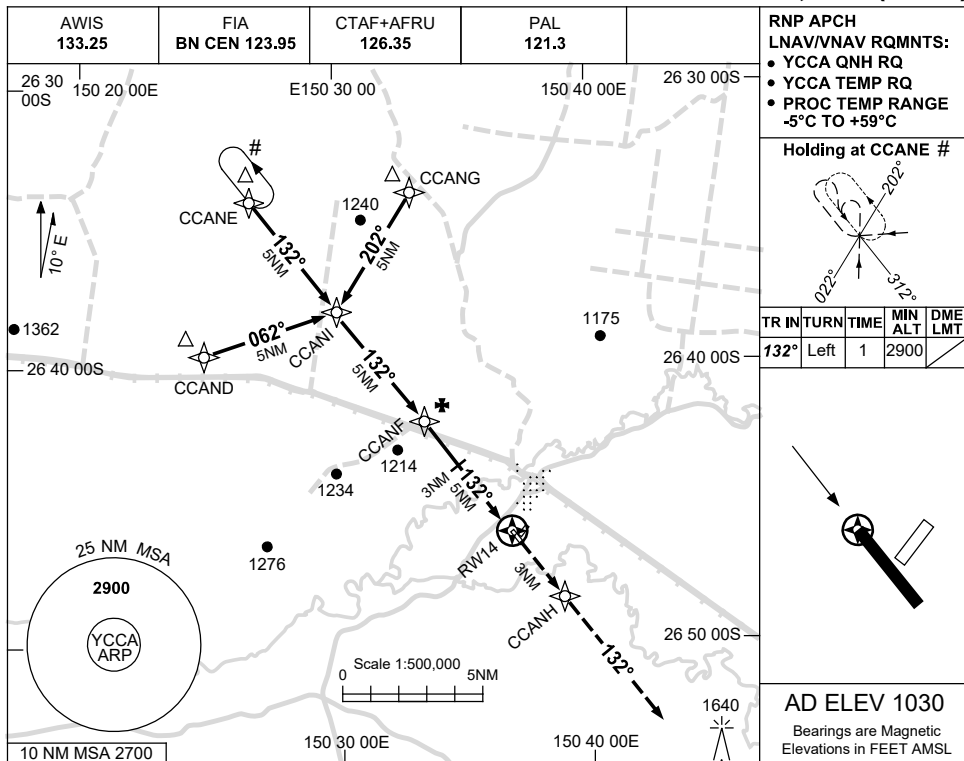
CCAAD01-176

USE QNH

RNP RWY 14

CHINCHILLA, QLD (YCCA)

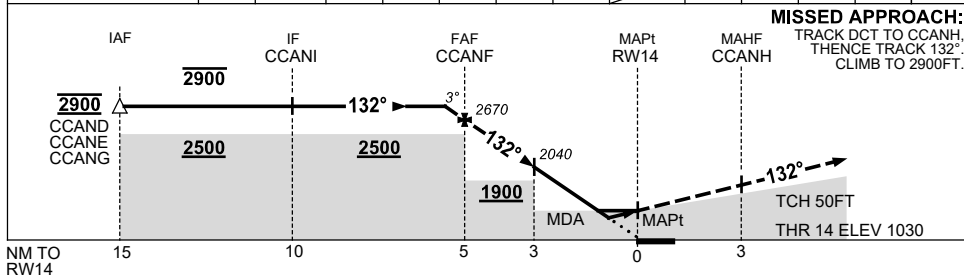
16 JUN 2022



AD ELEV 1030

Bearings are Magnetic
Elevations in FEET AMSL

NM TO NEXT WPT	0.7	CCANF	4	3	2	1.4	0.8	RW14					
ALT (3° APCH PATH)	2900	2670	2350	2040	1720	1530	1340						



MISSED APPROACH:
TRACK DCT TO CCANH,
THENCE TRACK 132°.
CLIMB TO 2900FT.

NOTES

CATEGORY	A	B	C	D
LNAV/VNAV		1340 (310-1.7)		NOT APPLICABLE
LNAV		1530 (500-2.8)		
CIRCLING	1630 (600-2.4)		1810 (780-4.0)	
ALTERNATE	(1100-4.4)		(1280-6.0)	

- MAX IAS:
INITIAL : 210KT.
- CAUTION: HLDG NOT
ABV 2900FT DUE TO
OVERLYING PROC AT
YMLS.

Changes: CHART TITLE, PBN SPECIFICATION BOX.

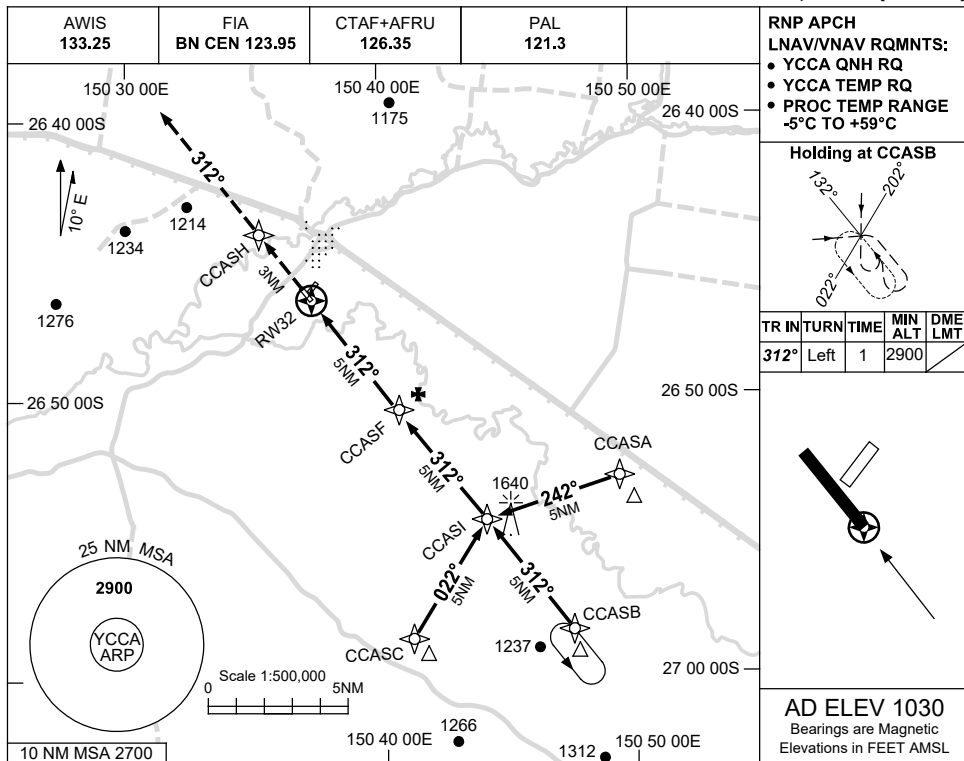
CCAGN01-171

USE QNH

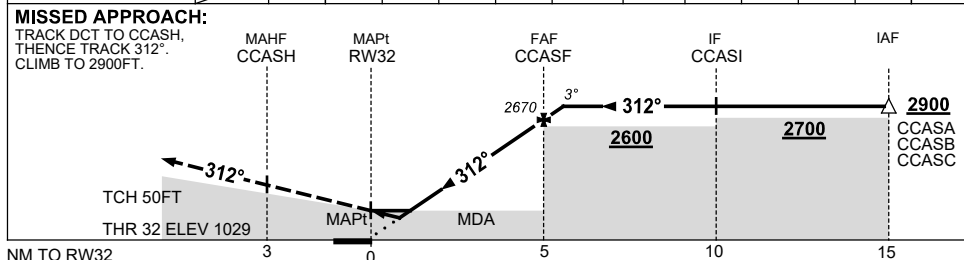
RNP RWY 32

CHINCHILLA, QLD (YCCA)

16 JUN 2022



NM TO NEXT WPT	RW32	0.8	1.4	2	3	4	CCASF	0.7					
ALT (3° APCH PATH)		1340	1530	1720	2040	2350	2670	2900					



NOTES

CATEGORY	A	B	C	D
LNAV/VNAV		1340 (311-1.7)		NOT APPLICABLE
LNAV		1530 (500-2.8)		
CIRCLING	1630 (600-2.4)		1810 (780-4.0)	
ALTERNATE	(1100-4.4)		(1280-6.0)	

1. MAX IAS:
INITIAL : 210KT.

Changes: CHART TITLE, PBN SPECIFICATION BOX.

CCAGN02-171