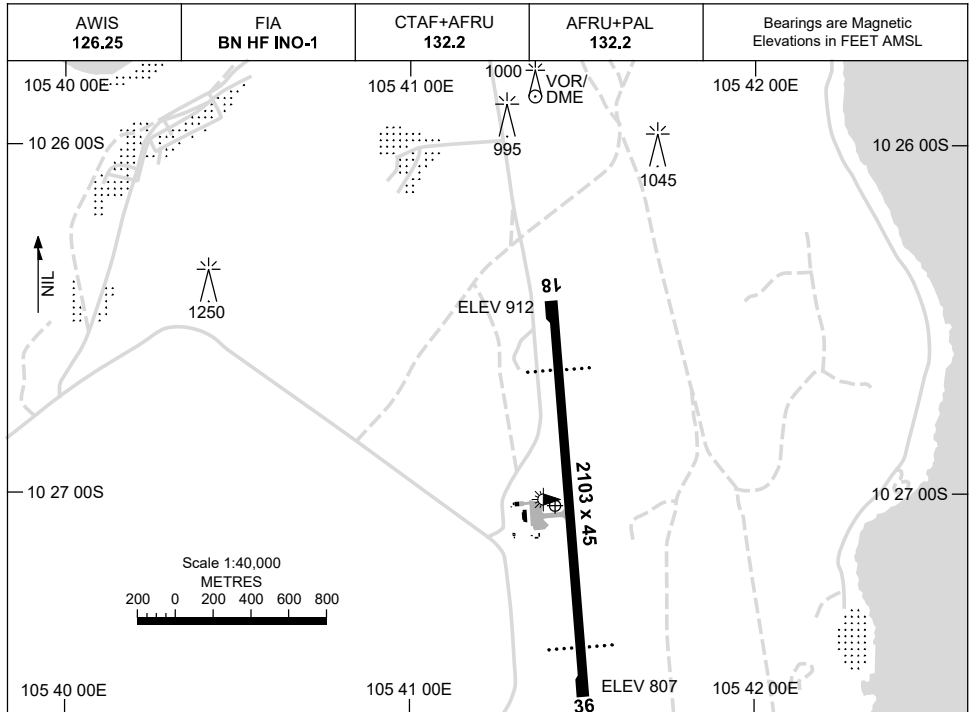


23 MAR 2023

AD ELEV 913  
10 27 02S 105 41 25E

**AERODROME CHART**  
**CHRISTMAS ISLAND, AUSTRALIA (YPXM)**



<b>RWY</b>	<b>AERODROME LIGHTING</b>
	TAXIWAY : BLUE EDGE RL : AFRU+PAL 132.2 , MAN ON REQ , SDBY (15 SEC) , PTBL (EMERG ONLY, 90 MIN PN)

<b>18</b> <sup>175</sup>	PAPI 3.3° 53FT LIRL PTBL
355 <b>36</b>	PAPI 3.0° 53FT LIRL PTBL

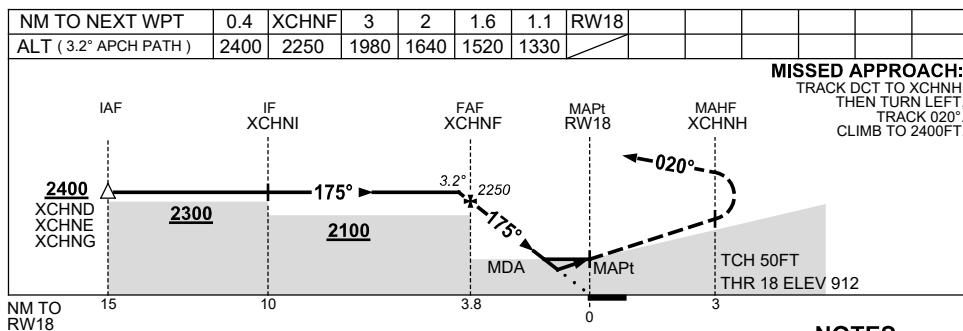
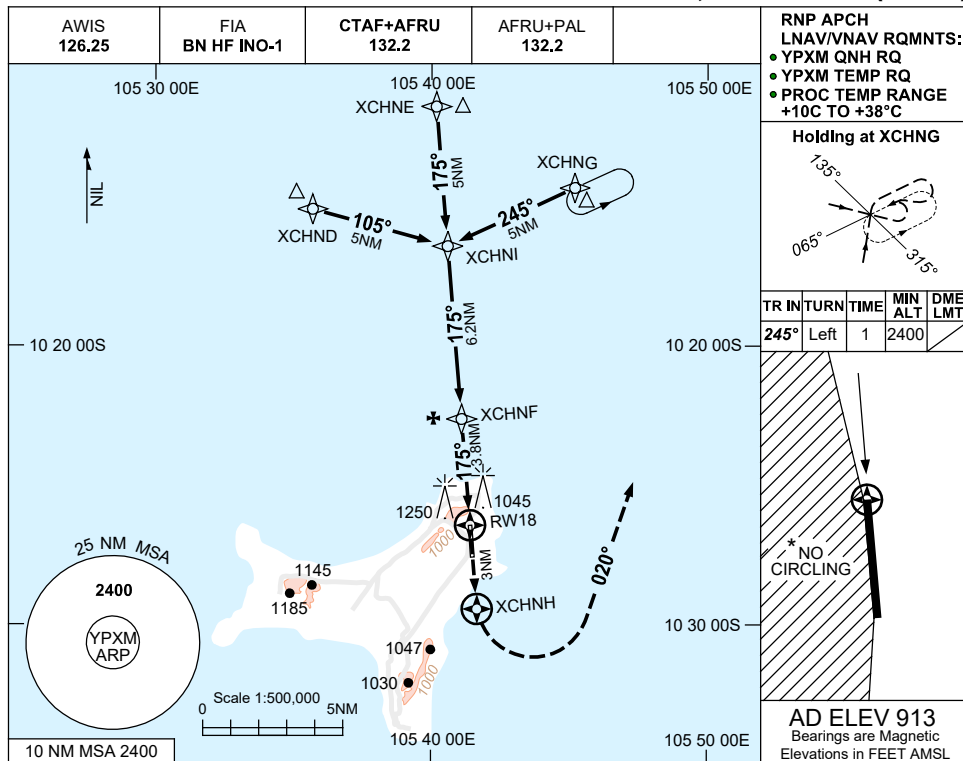
**NOTES**

Changes: NOTES REMOVED.

PXMAD01-174

**USE QNH** **RNP RWY 18**  
**CHRISTMAS ISLAND, AUSTRALIA (YPXM)**

**7 SEP 2023**



CATEGORY	A	B	C	D
LNAV/VNAV	<b>1330 (418-2.2)</b>			
LNAV	<b>1520 (607-3.2)</b>			
CIRCLING*	<b>1650 (737-2.4)</b>	<b>1750 (837-4.0)</b>	<b>1750 (837-5.0)</b>	
ALTERNATE	(1237-4.4)	(1337-6.0)	(1337-7.0)	

- NOTES**
- MAX IAS:  
INITIAL : 210KT.
  - NO CIRCLING WEST OF RWY 18/36.
  - COLOUR: SEE SPEC NOTICES.

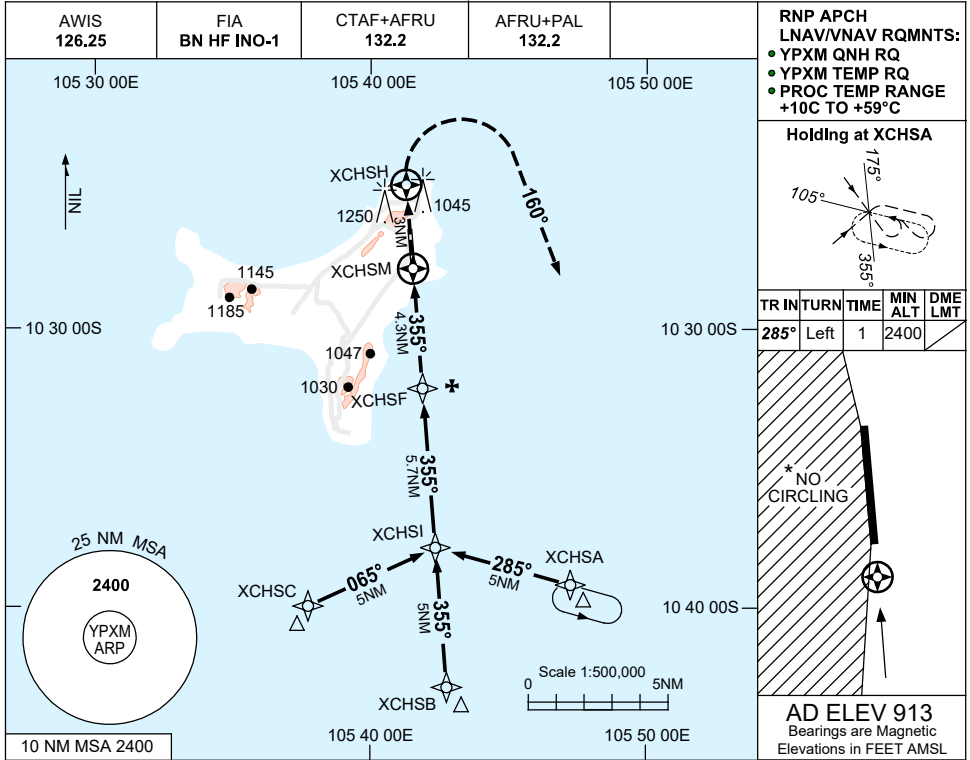
Changes: CHART TITLE, PBN SPECIFICATION BOX, Editorial.

PXMGN01-176

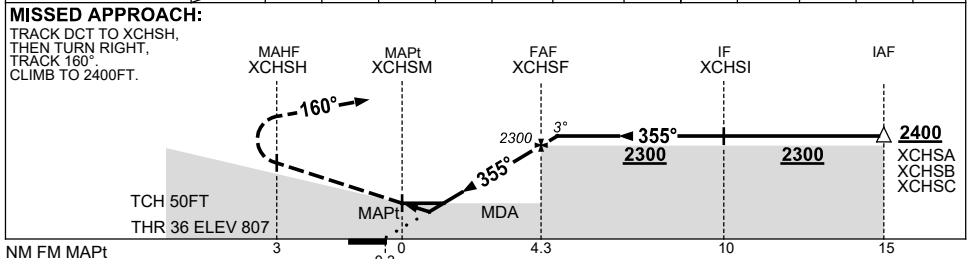
**USE QNH**  
**CHRISTMAS ISLAND, AUSTRALIA (YPXM)**

RNP RWY 36

7 SEP 2023



NM TO NEXT WPT	XCHSM	0.8	1.4	2	3	4	XCHSF	0.3				
ALT (3° APCH PATH)		1200	1400	1590	1900	2220	2300	2400				



**NOTES**

CATEGORY	A	B	C	D
LNAV/VNAV	<b>1200 (393-2.2)</b>			
LNAV	<b>1400 (593-3.4)</b>			
CIRCLING*	<b>1650 (737-2.4)</b>	<b>1750 (837-4.0)</b>	<b>1750 (837-5.0)</b>	
ALTERNATE	(1237-4.4)	(1337-6.0)	(1337-7.0)	

1. MAX IAS: INITIAL : 210KT.
2. NO CIRCLING WEST OF RWY 18/36.
3. COLOUR: SEE SPEC NOTICES.

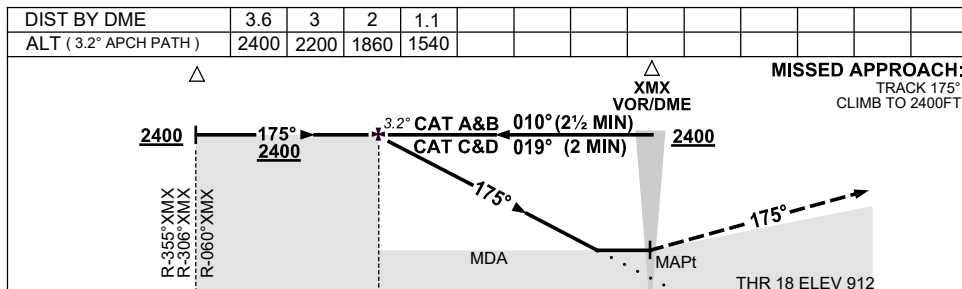
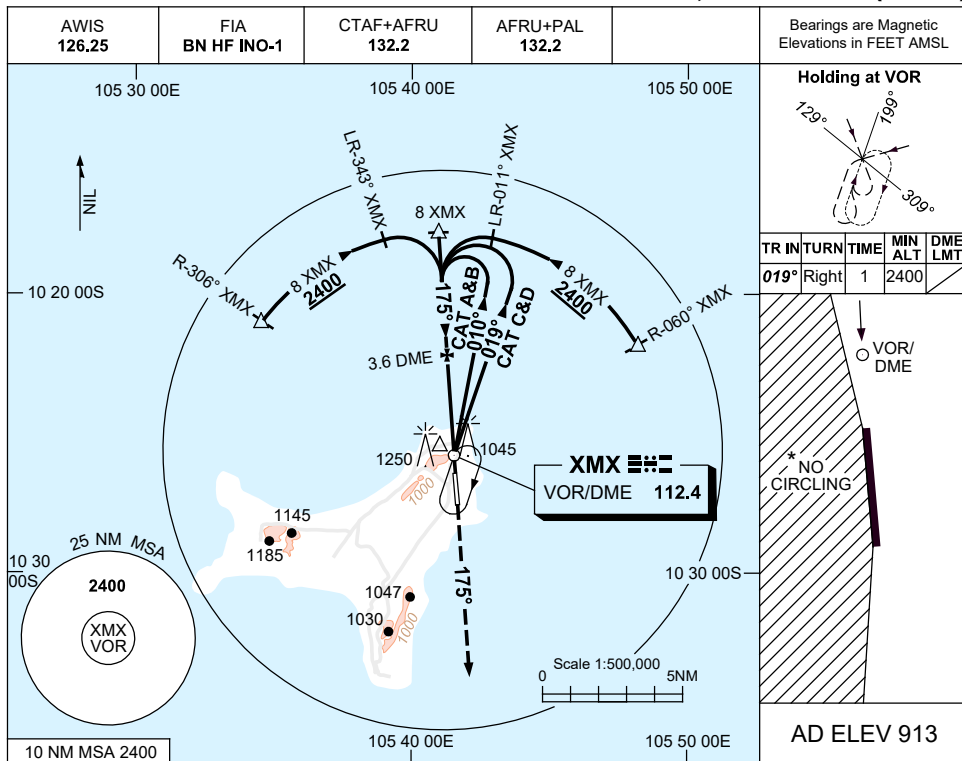
Changes: CHART TITLE, PBN SPECIFICATION BOX, Editorial.

PXMG02-176

**USE QNH**  
**CHRISTMAS ISLAND, AUSTRALIA (YPXM)**

VOR RWY 18

16 JUN 2022



**MISSED APPROACH:**  
TRACK 175°.  
CLIMB TO 2400FT.

**NOTES**

1. MAX IAS:  
INITIAL : 210KT.
- \*2. NO CIRCLING WEST  
OF RWY 18/36.
3. COLOUR: SEE  
SPEC NOTICES.

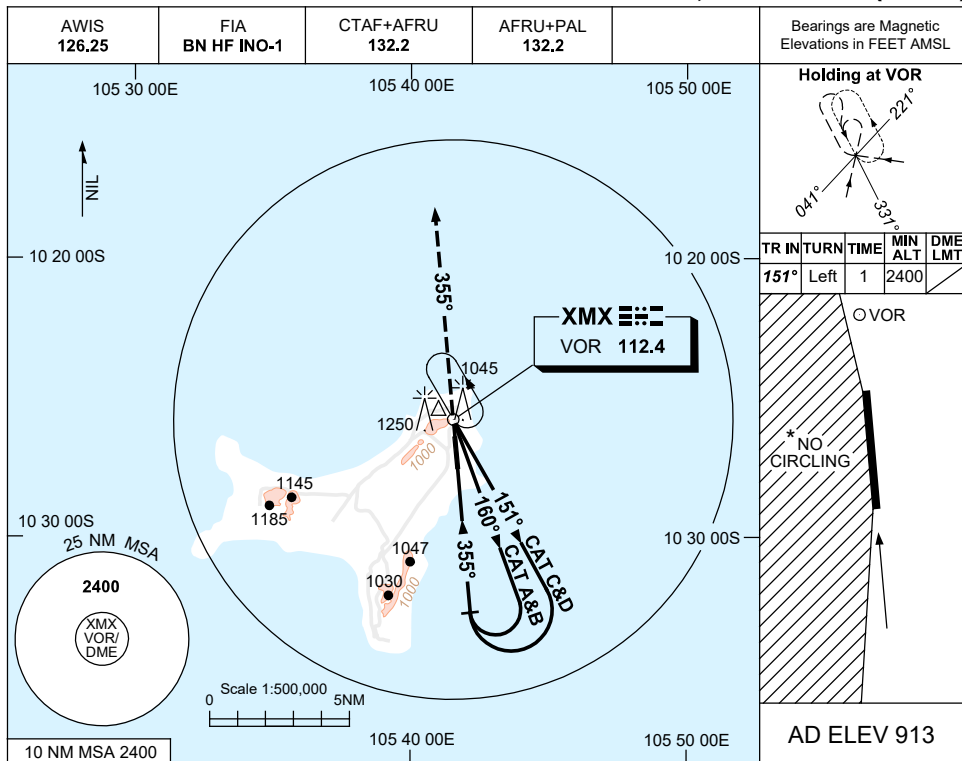
CATEGORY	A	B	C	D
S-I VOR		<b>1540 (627-3.4)</b>		
S-I VOR/DME		<b>1540 (627-3.4)</b>		
CIRCLING*	<b>1650 (737-2.4)</b>	<b>1750 (837-4.0)</b>	<b>1750 (837-5.0)</b>	
ALTERNATE	(1237-4.4)	(1337-6.0)	(1337-7.0)	

Changes: AFRU+PAL

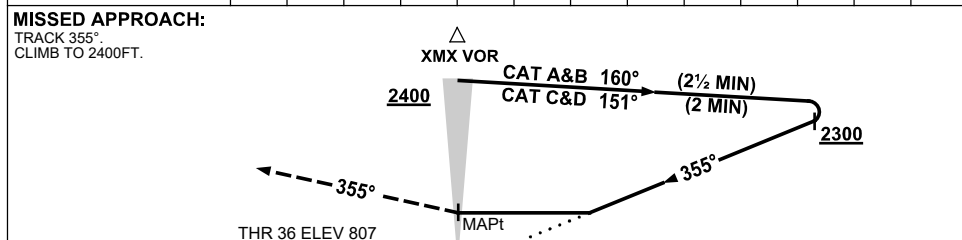
PXMV001-171

**USE QNH** VOR-Y RWY 36  
**CHRISTMAS ISLAND, AUSTRALIA (YPXM)**

**16 JUN 2022**



DIST BY DME	NOT APPLICABLE		
ALT			



**NOTES**

CATEGORY	A	B	C	D
S-I VOR	<b>1590 (783-4.5)</b>			
CIRCLING *	<b>1650 (737-2.4)</b>	<b>1750 (837-4.0)</b>	<b>1750 (837-5.0)</b>	
ALTERNATE	(1237-4.4)	(1337-6.0)	(1337-7.0)	

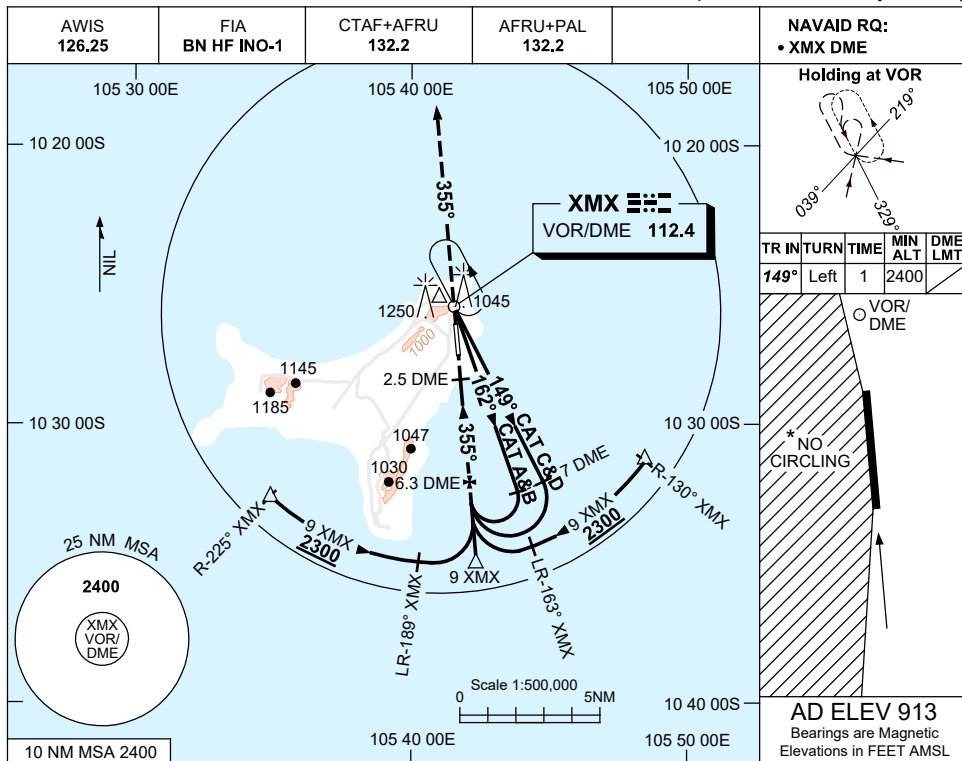
1. MAX IAS:  
INITIAL :  
CAT A&B 140KT.  
CAT C&D 210KT.
- \* 2. NO CIRCLING WEST OF RWY 18/36.
3. COLOUR: SEE SPEC NOTICES.

Changes: AFRU+PAL.

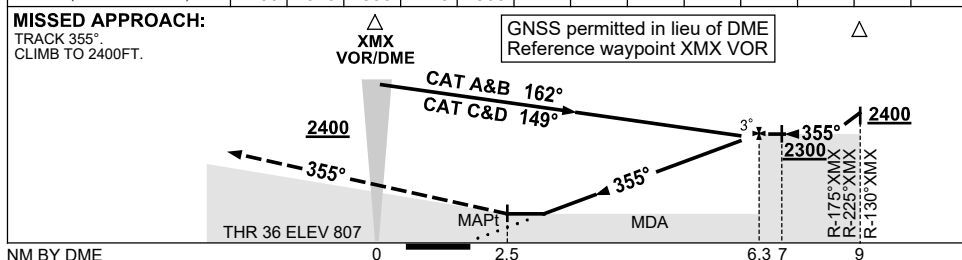
PXMV002-171

**USE QNH** **VOR-Z RWY 36**  
**CHRISTMAS ISLAND, AUSTRALIA (YPXM)**

**16 JUN 2022**



DIST BY DME	3.5	4	5	6	6.3					
ALT (3° APCH PATH)	1400	1570	1890	2210	2300					



**NOTES**

CATEGORY	A	B	C	D
S-I VOR/DME	<b>1400 (593-3.4)</b>			
CIRCLING *	<b>1650 (737-2.4)</b>	<b>1750 (837-4.0)</b>	<b>1750 (837-5.0)</b>	
ALTERNATE	(1237-4.4)	(1337-6.0)	(1334-7.0)	

1. MAX IAS:  
INITIAL :  
CAT A&B 140KT.  
CAT C&D 210KT.
- \*2. NO CIRCLING WEST OF RWY 18/36.
3. COLOUR: SEE SPEC NOTICES.

Changes:AFRU+PAL

PXMV003-171