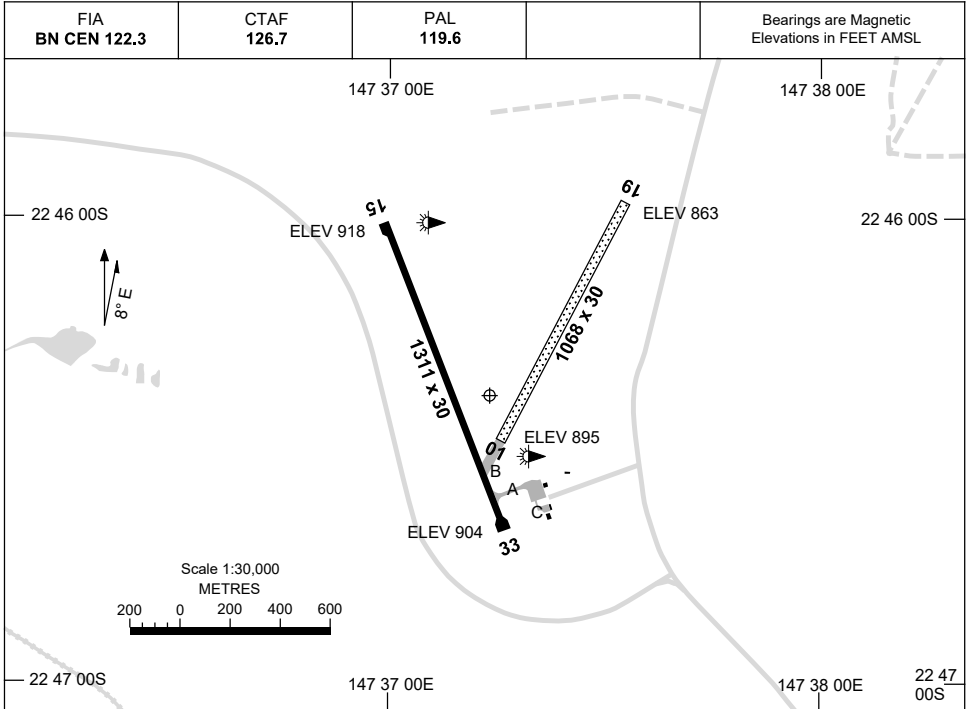


13 JUN 2024

AD ELEV 918
22 46 23S 147 37 14E

AERODROME CHART
CLERMONT, QLD (YCMT)



	AERODROME LIGHTING	
RWY	TAXIWAY : BLUE EDGE RL : PAL 119.6 , PTBL (60 MIN PN) , SDBY (MAN ACT, 30 MIN PN)	
15 <small>150</small>	LIRL PTBL	
<small>330</small> 33	LIRL PTBL	
01 <small>019</small>	PTBL	
<small>199</small> 19	PTBL	

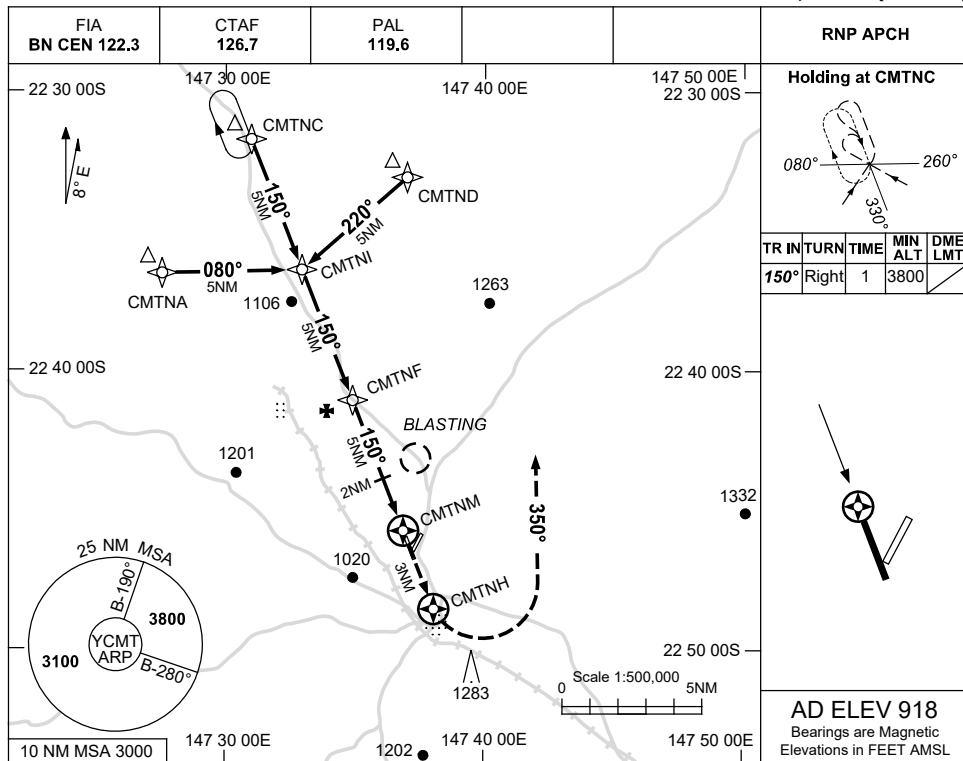
NOTES

1. FIA FREQ 122.3 AVBL IN CIRCUIT AREA.

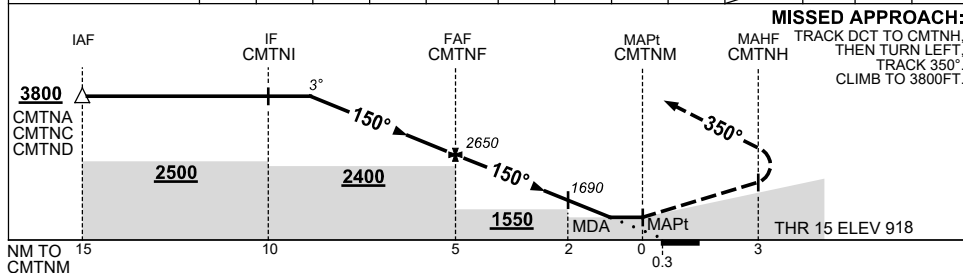
USE QNH

RNP RWY 15
CLERMONT, QLD (YCMT)

8 SEP 2022



NM TO NEXT WPT	3.6	3	2	1	CMTNF	4	3	2	1.3	CMTNM			
ALT (3° APCH PATH)	3800	3600	3280	2960	2650	2330	2010	1690	1470				



NOTES

CATEGORY	A	B	C	D
LNAV	1470 (552-3.1)			NOT APPLICABLE
CIRCLING	1570 (652-2.4)	1780 (862-4.0)		
ALTERNATE	(1152-4.4)		(1362-6.0)	

- MAX IAS: INITIAL : 210KT.
- BLASTING BRG 010 MAG AND 3NM FM ARP BTN 2100 AND 0700 UTC DLY.

Changes: NOTE 2.

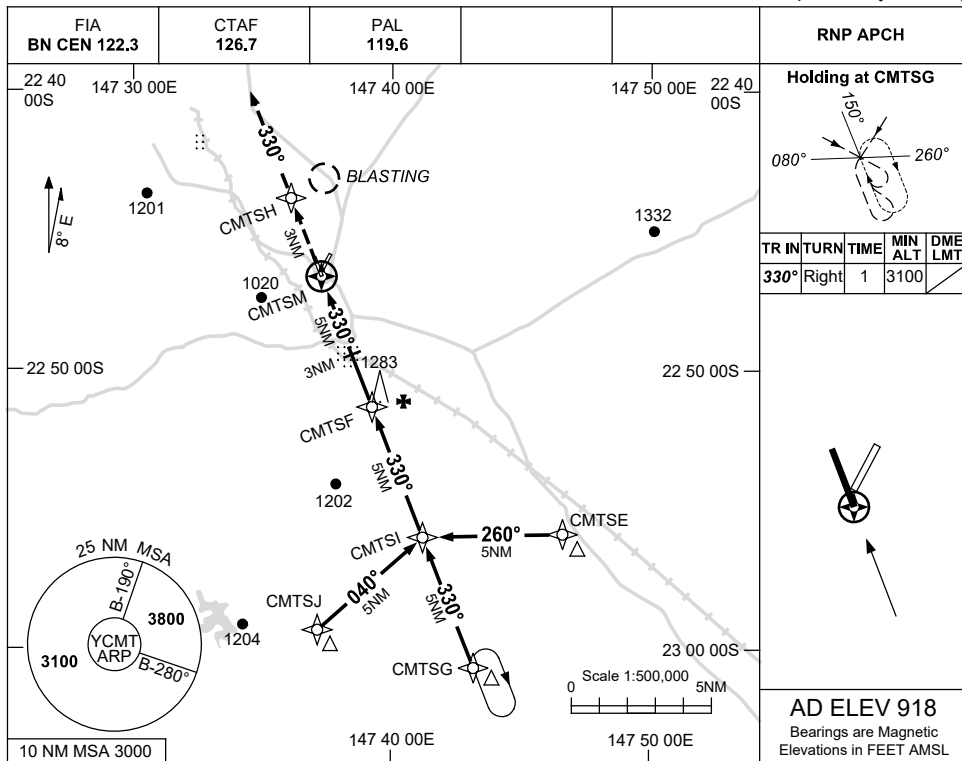
CMTGN01-172

USE QNH

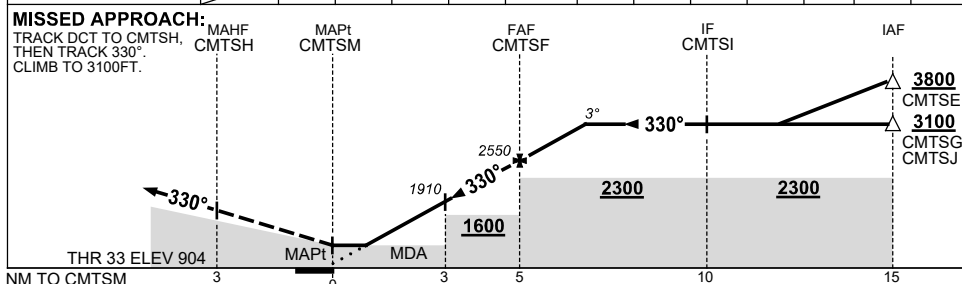
RNP RWY 33

8 SEP 2022

CLERMONT, QLD (YCMT)



NM TO NEXT WPT	CMTSM	1.6	2	3	4	CMTSF	1	1.7					
ALT (3° APCH PATH)		1450	1590	1910	2230	2550	2860	3100					



NOTES

CATEGORY	A	B	C	D
LNAV	1450 (546-3.1)			NOT APPLICABLE
CIRCLING	1570 (652-2.4)	1780 (862-4.0)		
ALTERNATE	(1152-4.4)		(1362-6.0)	

- MAX IAS: INITIAL : 210KT.
- BLASTING BRG 010 MAG AND 3NM FM ARP BTN 2100 AND 0700 UTC DLY.

Changes: NOTE 2.

CMTGN02-172