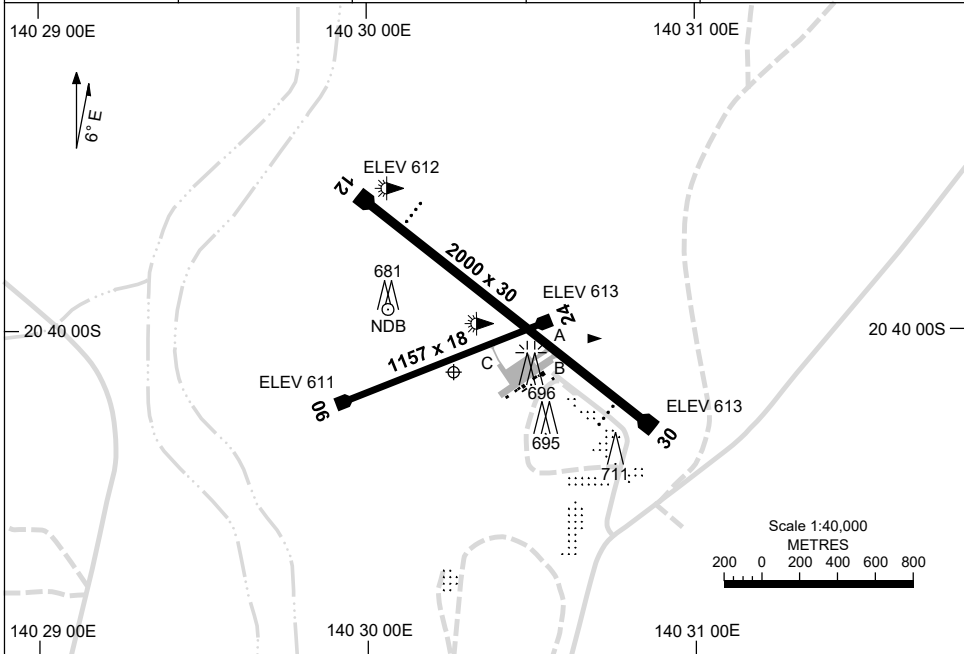


30 NOV 2023

AD ELEV 613
20 40 07S 140 30 16E

AERODROME CHART
CLONCURRY, QLD (YCCY)

| | | | | |
|----------------|---------------------|--------------------|-------------------|--|
| AWIS 128.05 | FIA BN CEN 122.4 | CTAF+AFRU 126.7 | AFRU+PAL 126.7 | Bearings are Magnetic Elevations in FEET AMSL |
|----------------|---------------------|--------------------|-------------------|--|



| AERODROME LIGHTING | |
|---------------------------|---|
| RWY | TAXIWAY : GREEN CENTRELINE TWY A , BLUE EDGE TWY B RL : AFRU+PAL 126.7 , PTBL (EMERG ONLY , 40 MIN PN) , SDBY (15 SEC) |
| 12 ¹²² | PAPI 3.0° 46FT LIRL PTBL |
| 302 30 | PAPI 3.0° 46FT LIRL PTBL |
| 06 ⁰⁶² | NIL |
| 242 24 | NIL |

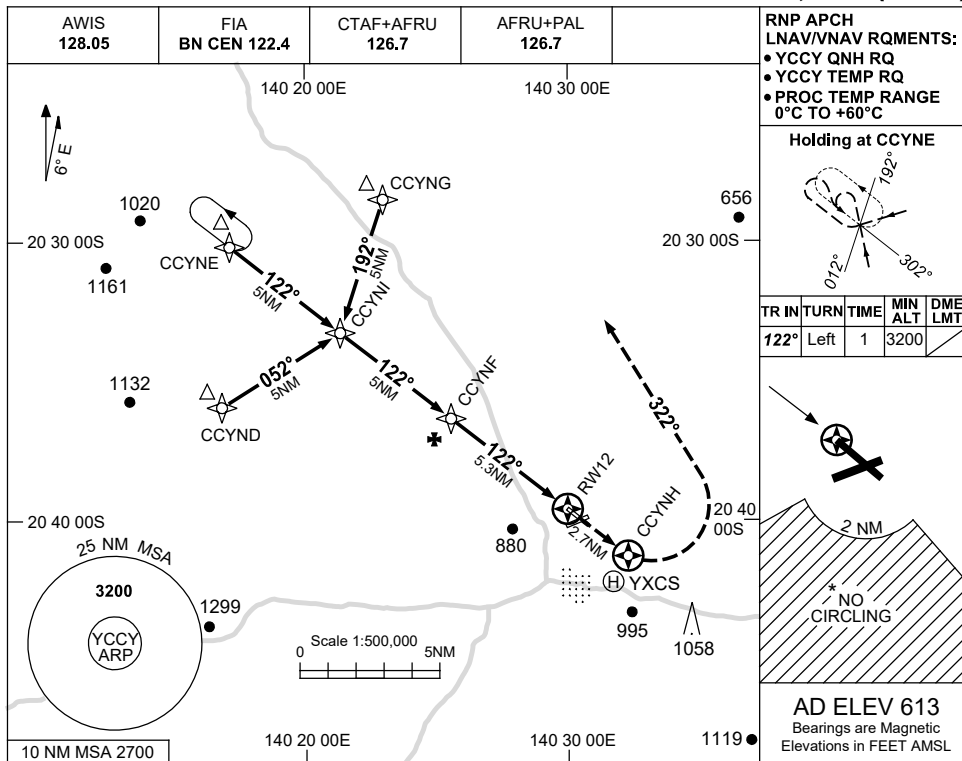
NOTES

- FIA FREQ 122.4 AVBL ABV 3500FT.
- AWIS REQUIRES 1 SEC PULSE TO ACTIVATE.

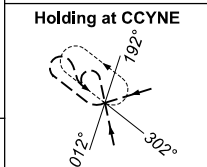
USE QNH

RNP RWY 12
CLONCURRY, QLD (YCCY)

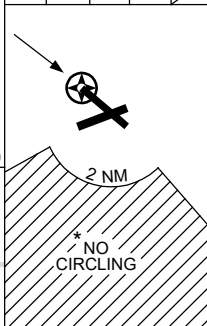
16 JUN 2022



RNP APCH
LNAV/VNAV RQMENTS:
• YCCY QNH RQ
• YCCY TEMP RQ
• PROC TEMP RANGE
0°C TO +60°C

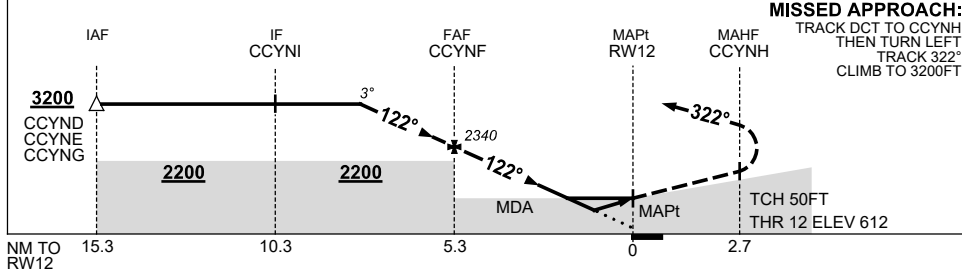


| TR IN | TURN | TIME | MIN ALT | DME LMT |
|-------|------|------|---------|---------|
| 122° | Left | 1 | 3200 | |



AD ELEV 613
Bearings are Magnetic
Elevations in FEET AMSL

| NM TO NEXT WPT | 2.7 | 2 | 1 | CCYNF | 4 | 3 | 2 | 1.8 | 1.2 | RWY12 | | | |
|--------------------|------|------|------|-------|------|------|------|------|------|-------|--|--|--|
| ALT (3° APCH PATH) | 3200 | 2980 | 2660 | 2340 | 1940 | 1620 | 1300 | 1250 | 1060 | | | | |



MISSED APPROACH:
TRACK DCT TO CCYNH,
THEN TURN LEFT,
TRACK 322°,
CLIMB TO 3200FT.

NOTES

| CATEGORY | A | B | C | D |
|------------|----------------|----------------|----------------|----------------|
| LNAV/VNAV | | 1060 (448-2.5) | | NOT APPLICABLE |
| LNAV | | 1250 (637-3.6) | | |
| CIRCLING * | 1570 (957-2.4) | | 1570 (957-4.0) | |
| ALTERNATE | (1457-4.4) | | (1457-6.0) | |

- MAX IAS:
INITIAL : 210KT.
- * NO CIRCLING IN SECTOR SOUTH OF RWYS 06 AND 30 BEYOND 2NM.

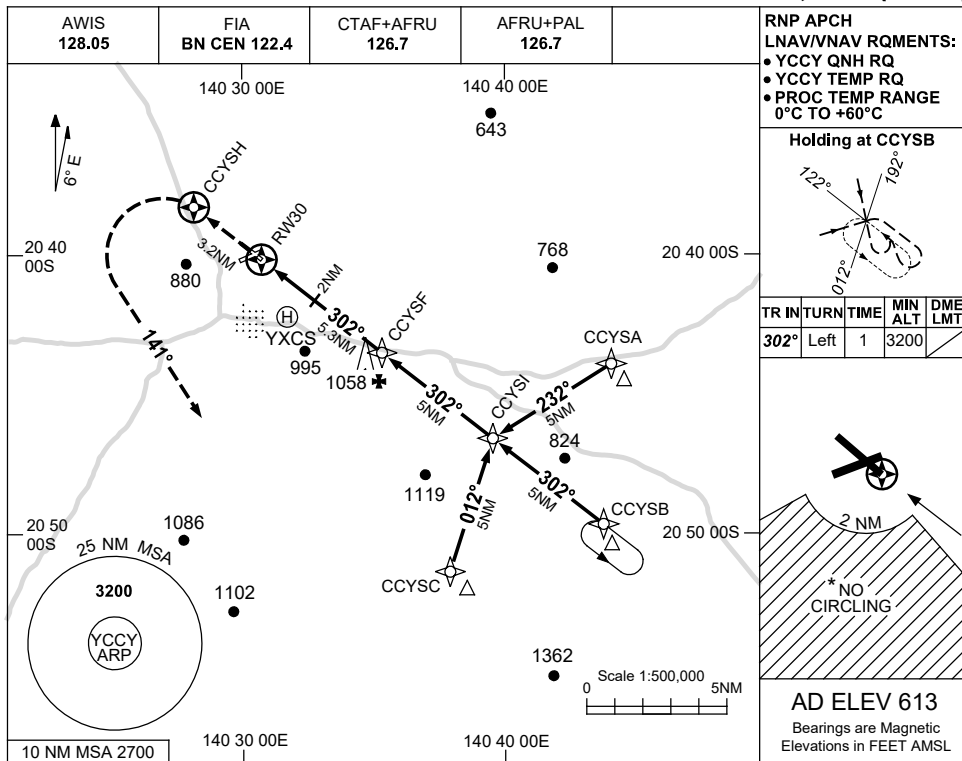
Changes: CHART TITLE, PBN SPECIFICATION BOX.

CCYGN01-171

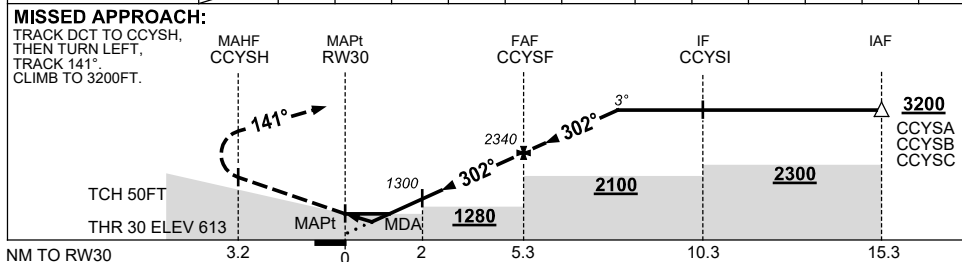
USE QNH

RNP RWY 30
CLONCURRY, QLD (YCCY)

16 JUN 2022



| NM TO NEXT WPT | RW30 | 1 | 1.7 | 2 | 3 | 4 | CCYSF | 1 | 2 | 2.7 | | |
|--------------------|------|-----|------|------|------|------|-------|------|------|------|--|--|
| ALT (3° APCH PATH) | | 990 | 1190 | 1300 | 1620 | 1940 | 2340 | 2660 | 2980 | 3200 | | |



NOTES

| CATEGORY | A | B | C | D | |
|-----------|-----------------------|---|-----------------------|-----------------------|--|
| LNAV/VNAV | 990 (377-2.1) | | | NOT APPLICABLE | |
| LNAV | 1190 (577-3.3) | | | | |
| CIRCLING* | 1570 (957-2.4) | | 1570 (957-4.0) | | |
| ALTERNATE | (1457-4.4) | | (1457-6.0) | | |

1. MAX IAS: INITIAL : 210KT.
* 2. NO CIRCLING IN SECTOR SOUTH OF RWYS 06 AND 30 BEYOND 2NM.

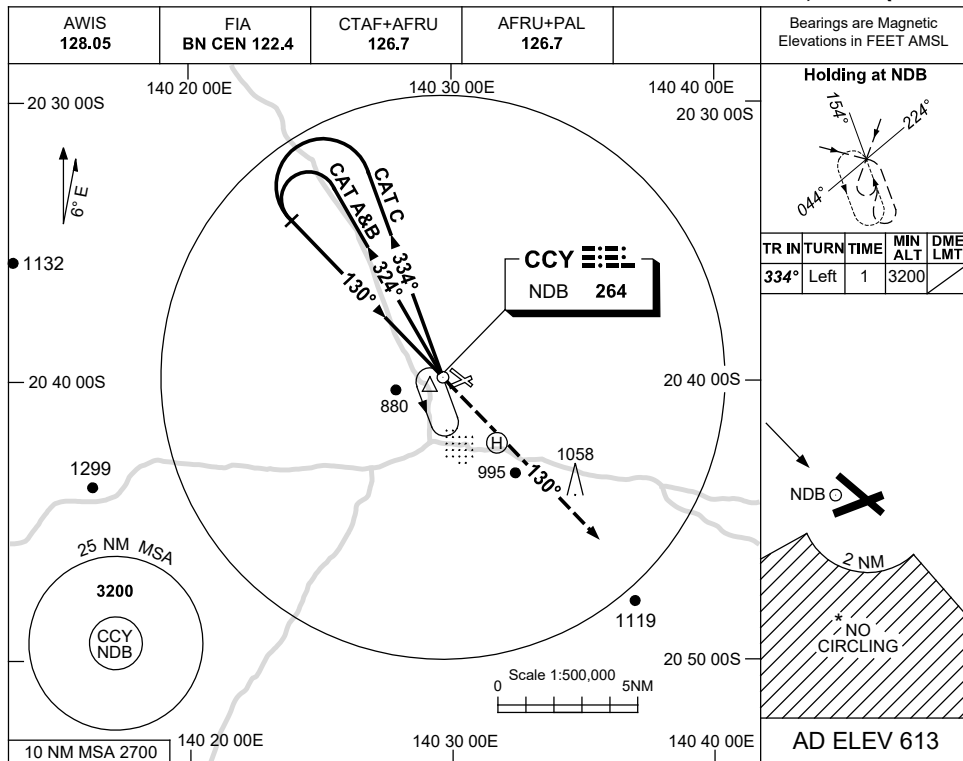
Changes: CHART TITLE, PBN SPECIFICATION BOX.

CCYGN02-171

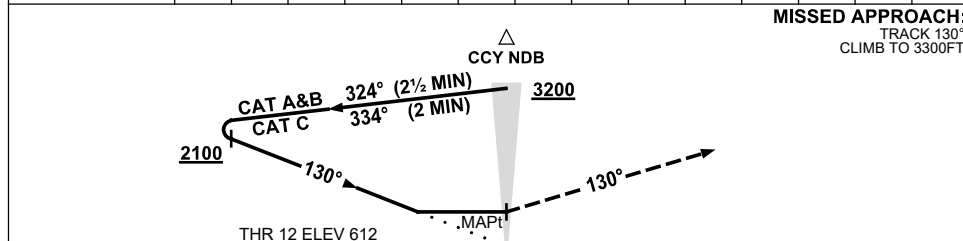
USE QNH

NDB RWY 12
CLONCURRY, QLD (YCCY)

17 JUN 2021



| | | | | | | | | | | |
|----------|----------------|--|--|--|--|--|--|--|--|--|
| DME DIST | NOT APPLICABLE | | | | | | | | | |
| ALT | | | | | | | | | | |



NOTES

| CATEGORY | A | B | C | D |
|------------|-----------------------|---|-----------------------|-------------------|
| S-I NDB | 1300 (687-3.9) | | | NOT APPLICABLE |
| CIRCLING * | 1570 (957-2.4) | | 1570 (957-4.0) | |
| ALTERNATE | (1457-4.4) | | (1457-6.0) | |

1. MAX IAS:
INITIAL : 210KT.
- * 2. NO CIRCLING IN
SECTOR SOUTH OF
RWYS 06 AND 30
BEYOND 2NM.

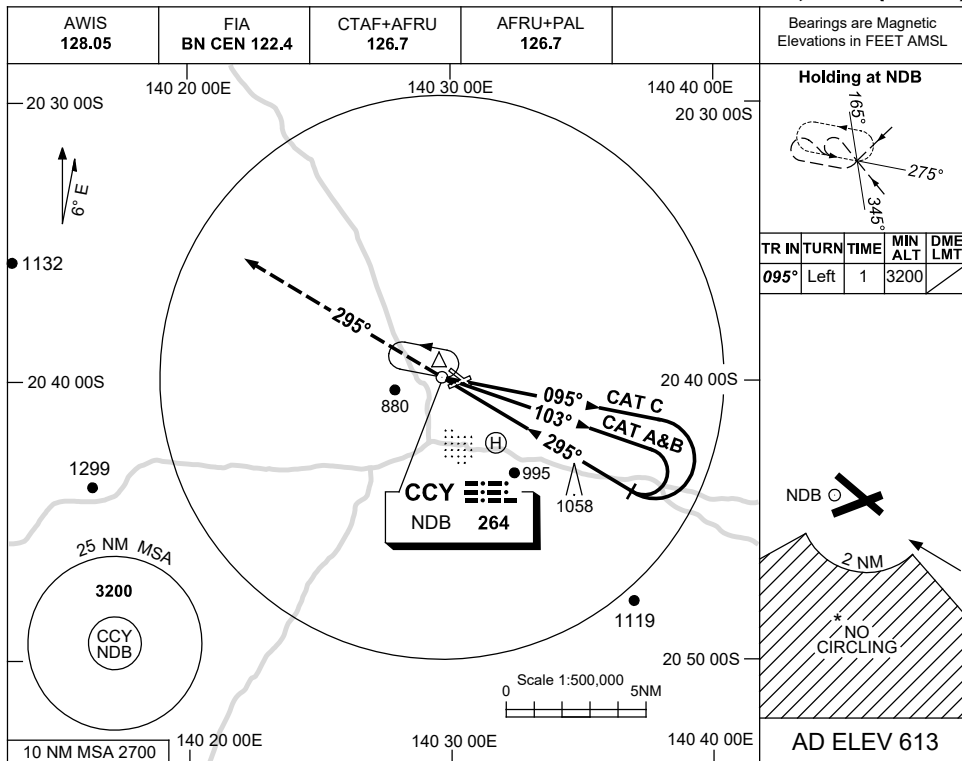
Changes: COORD FMT, Editorial.

CCYNB01-167

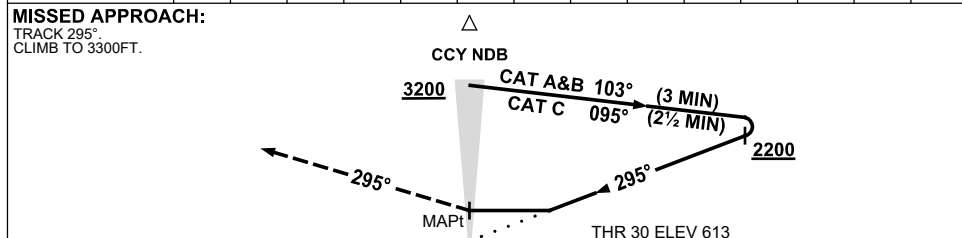
USE QNH

NDB RWY 30
CLONCURRY, QLD (YCCY)

17 JUN 2021



| | | | | |
|----------|----------------|--|--|--|
| DME DIST | | | | |
| ALT | NOT APPLICABLE | | | |



NOTES

| CATEGORY | A | B | C | D |
|------------|----------------|----------------|---|----------------|
| S-I NDB | 1570 (957-5.0) | | | NOT APPLICABLE |
| CIRCLING * | 1570 (957-2.4) | 1570 (957-4.0) | | |
| ALTERNATE | (1457-4.4) | (1457-6.0) | | |

1. MAX IAS:
INITIAL : 210KT.
- *2. NO CIRCLING IN SECTOR SOUTH OF RWYS 06 AND 30 BEYOND 2NM.

Changes: COORD FMT, Editorial.

CCYNB02-167