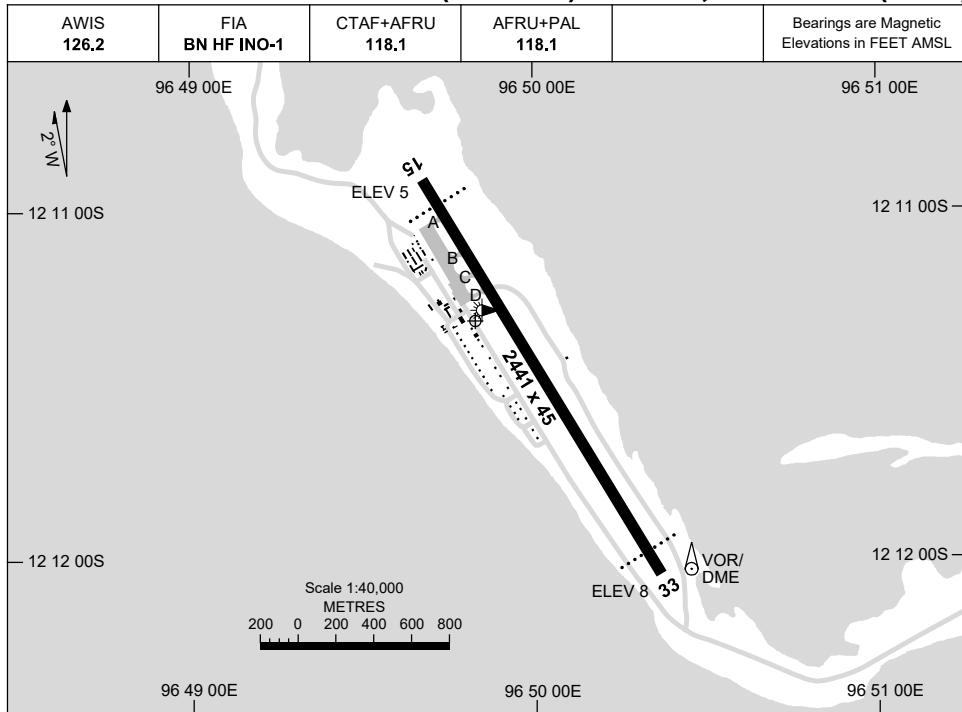


AD ELEV 10  
12 11 19S 96 49 50E

AERODROME CHART

8 SEP 2022

**COCOS (KEELING) ISLANDS, AUSTRALIA (YPCC)**



<b>AERODROME LIGHTING</b>	
<b>RWY</b>	TAXIWAY : BLUE EDGE RL : AFRU+PAL 118.1 , SDBY (13 SEC) , PTBL (EMERG ONLY, 90 MIN PN)
<b>15</b> <small>151</small>	PAPI 3.0° 53FT LIRL PTBL
<small>331</small> <b>33</b>	PAPI 3.0° 53FT LIRL PTBL

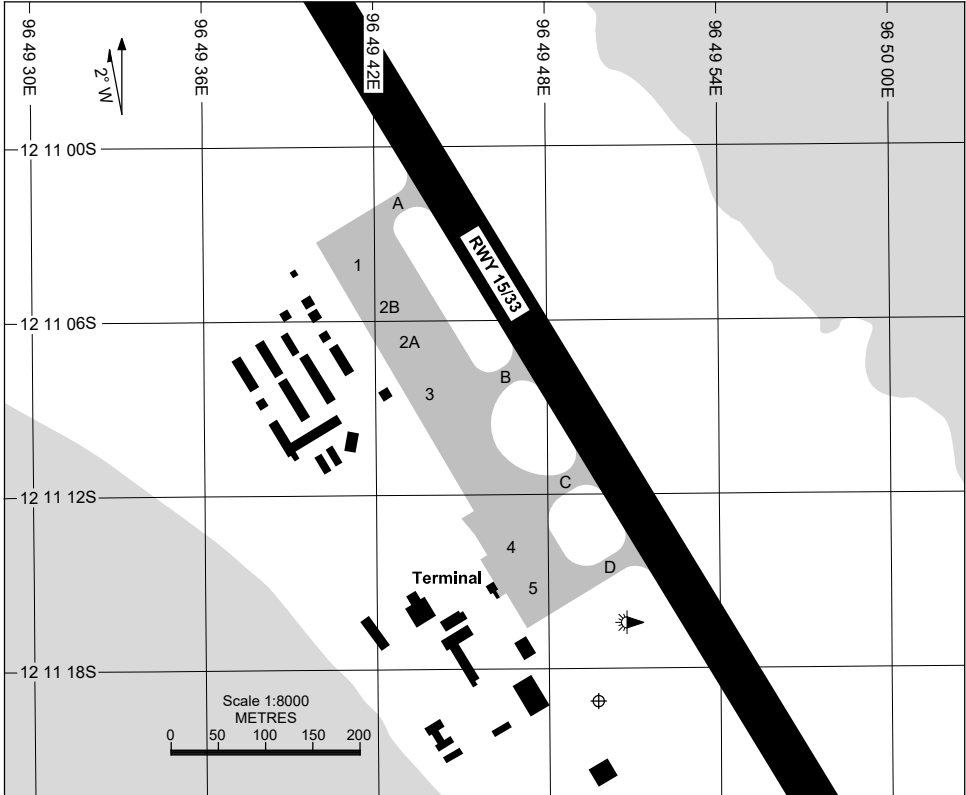
**NOTES**

Changes: PTBL LIGHTING PN.

PCCAD01-172

17 JUN 2021

**COCOS (KEELING) ISLANDS, AUSTRALIA (YPCC)**



**PARKING POSITION INFORMATION**

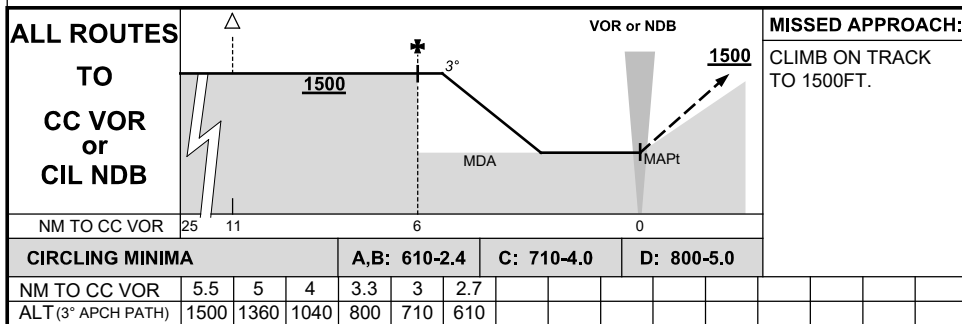
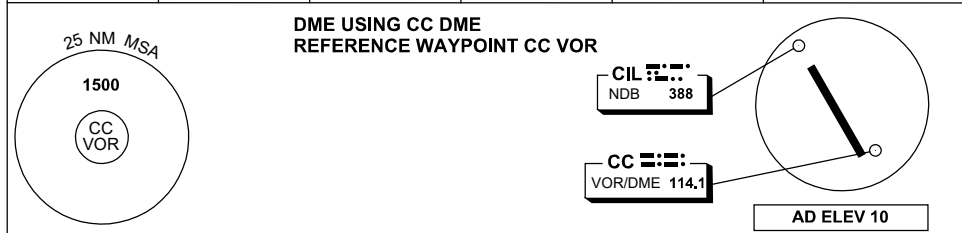
STAND	CO-ORDINATES	ELEV (ft)	CAPACITY	FUEL
1	12 11 04.70S 96 49 41.66E	9	B738/C130/P3	TANKER
2A	12 11 07.40S 96 49 43.66E	9	B738/C130/P3	TANKER
2B	12 11 06.29S 96 49 42.98E	9	B738/C130/P3	TANKER
3	12 11 09.21S 96 49 44.49E	9	B738/C130/P3	TANKER
4	12 11 14.57S 96 49 47.38E	9	B738	TANKER
5	12 11 15.99S 96 49 48.25E	9	B738	TANKER

Changes: BAYS CAPACITY UPDATE.

# DME or GNSS ARRIVAL PROCEDURES COCOS (KEELING) ISLANDS, AUSTRALIA (YPCC)

5 NOV 2020

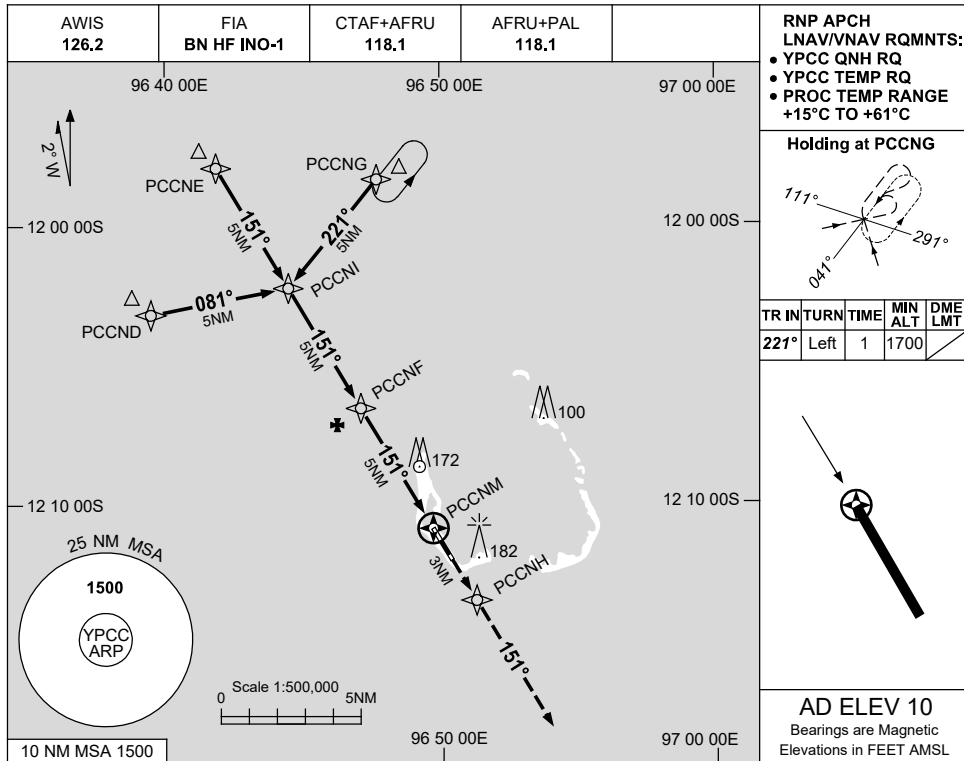
AWIS 126.2	FIA BN HF INO-1	CTAF+AFRU 118.1	AFRU+PAL 118.1		Bearings are Magnetic Elevations in FEET AMSL
---------------	--------------------	--------------------	-------------------	--	--



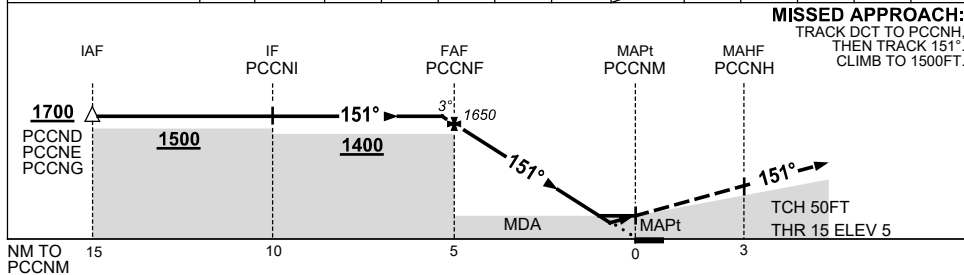
**USE QNH**  
**COCOS (KEELING) ISLANDS, AUSTRALIA (YPCC)**

RNP RWY 15

7 SEP 2023



NM TO NEXT WPT	0.2	PCCNF	4	3	2	1.6	1	PCCNM					
ALT (3° APCH PATH)	1700	1650	1330	1010	690	550	370						



**NOTES**

CATEGORY	A	B	C	D
LNAV/VNAV	370 (365-2.0)			
LNAV	550 (540-3.1)			
CIRCLING	610 (600-2.4)		710 (700-4.0)	800 (790-5.0)
ALTERNATE	(1100-4.4)		(1200-6.0)	(1290-7.0)

1. MAX IAS:  
INITIAL : 210KT.

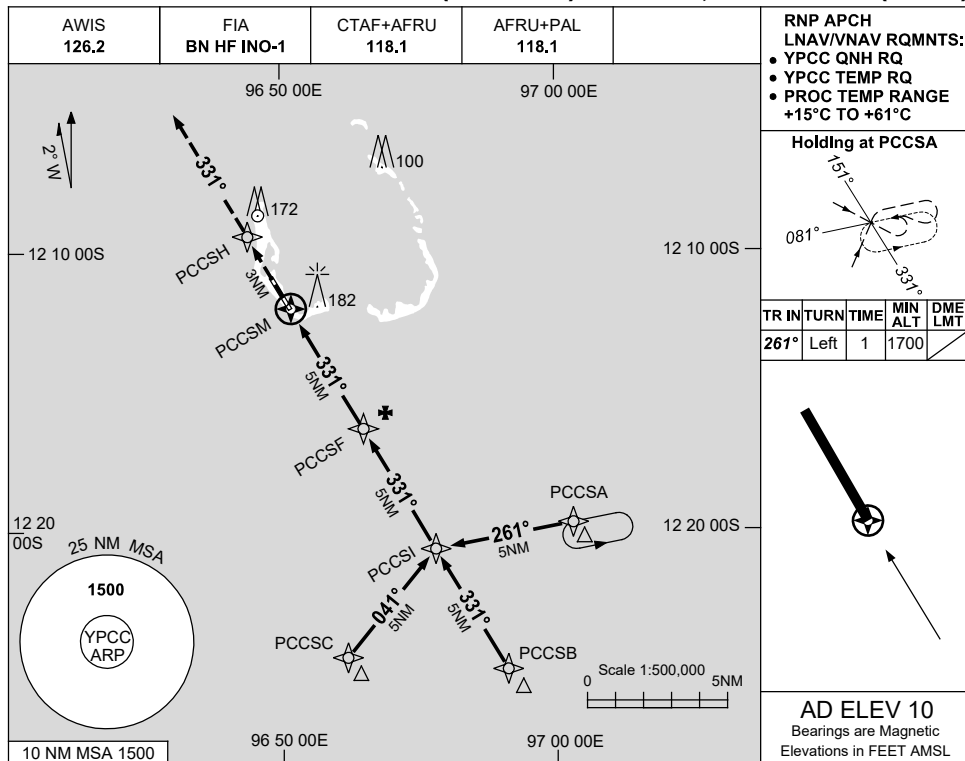
Changes: CHART TITLE, PBN SPECIFICATION BOX, Editorial.

PCCGN01-176

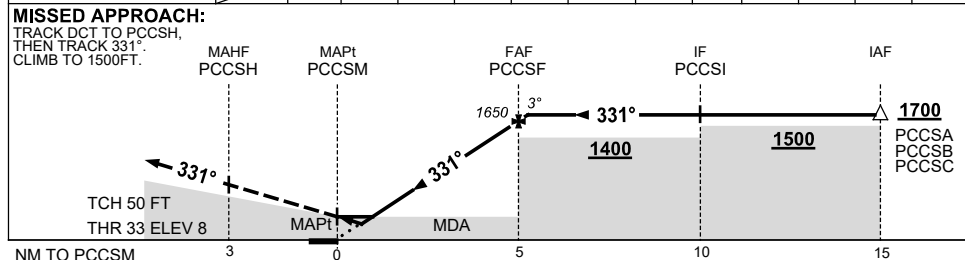
**USE QNH**  
**COCOS (KEELING) ISLANDS, AUSTRALIA (YPCC)**

RNP RWY 33

7 SEP 2023



NM TO NEXT WPT	PCCSM	1	1.6	2	3	4	PCCSF	0.2				
ALT (3° APCH PATH)		370	550	690	1010	1330	1650	1700				



**NOTES**

CATEGORY	A	B	C	D
LNAV/VNAV		370 (362-2.0)		
LNAV		550 (540-3.1)		
CIRCLING	610 (600-2.4)		710 (700-4.0)	800 (790-5.0)
ALTERNATE	(1100-4.4)		(1290-7.0)	

1. MAX IAS:  
INITIAL : 210KT.

Changes: CHART TITLE, PBN SPECIFICATION BOX, Editorial.

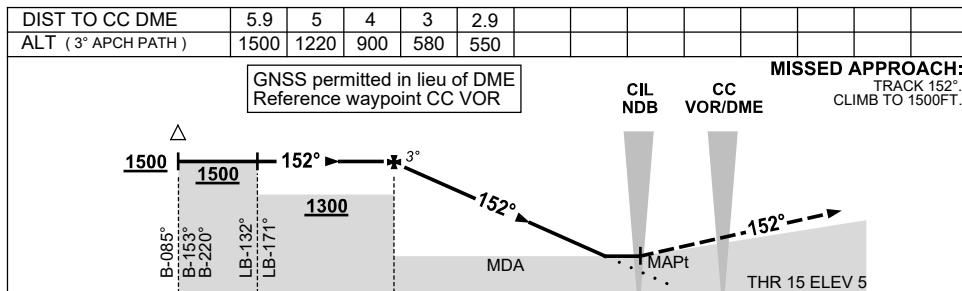
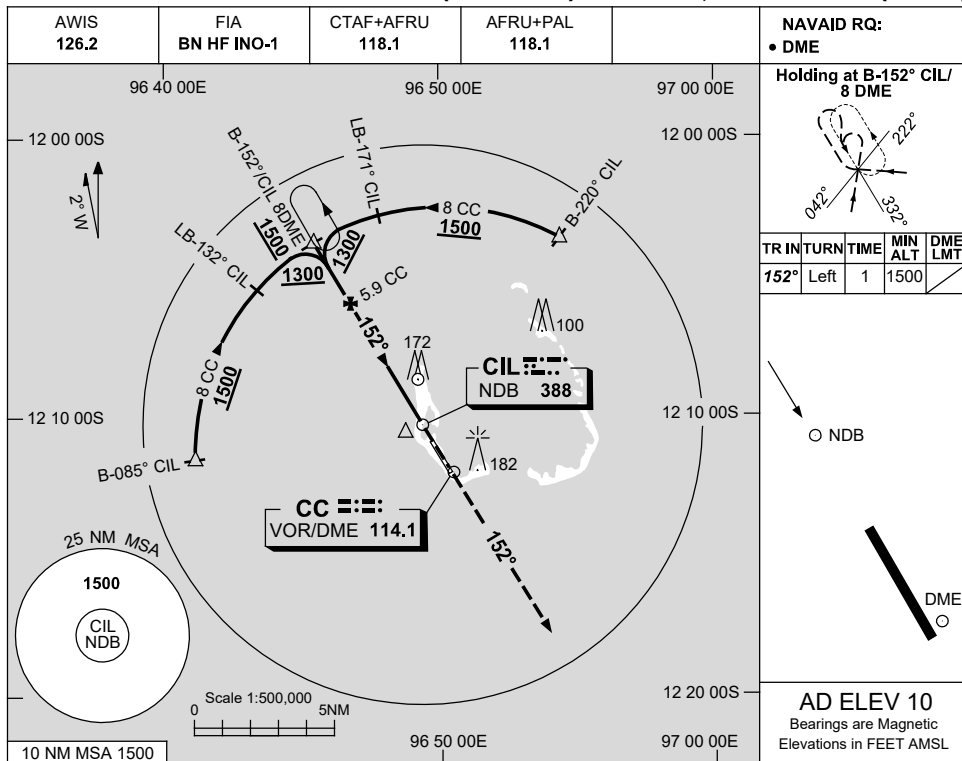
PCCGN02-176



**USE QNH**  
**COCOS (KEELING) ISLANDS, AUSTRALIA (YPCC)**

NDB-Z RWY 15

5 NOV 2020



**NOTES**

CATEGORY	A	B	C	D
S-I NDB/DME	550 (540-3.1)			
CIRCLING	610 (600-2.4)	710 (700-4.0)	800 (790-5.0)	
ALTERNATE	(1100-4.4)	(1200-6.0)	(1290-7.0)	

1. MAX IAS:  
INITIAL: 210KT.

Changes: AD NAME, COORD FMT, Editorial.

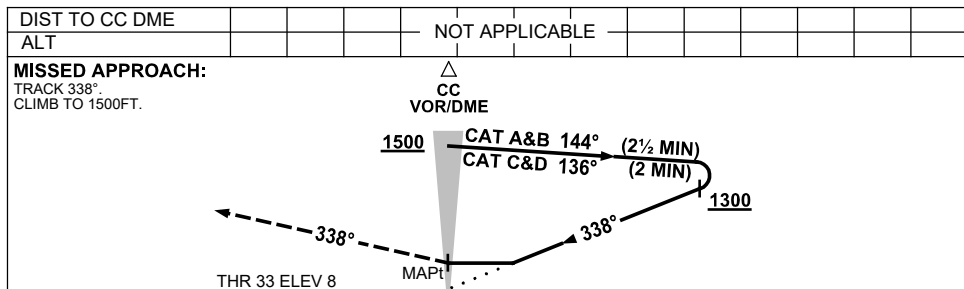
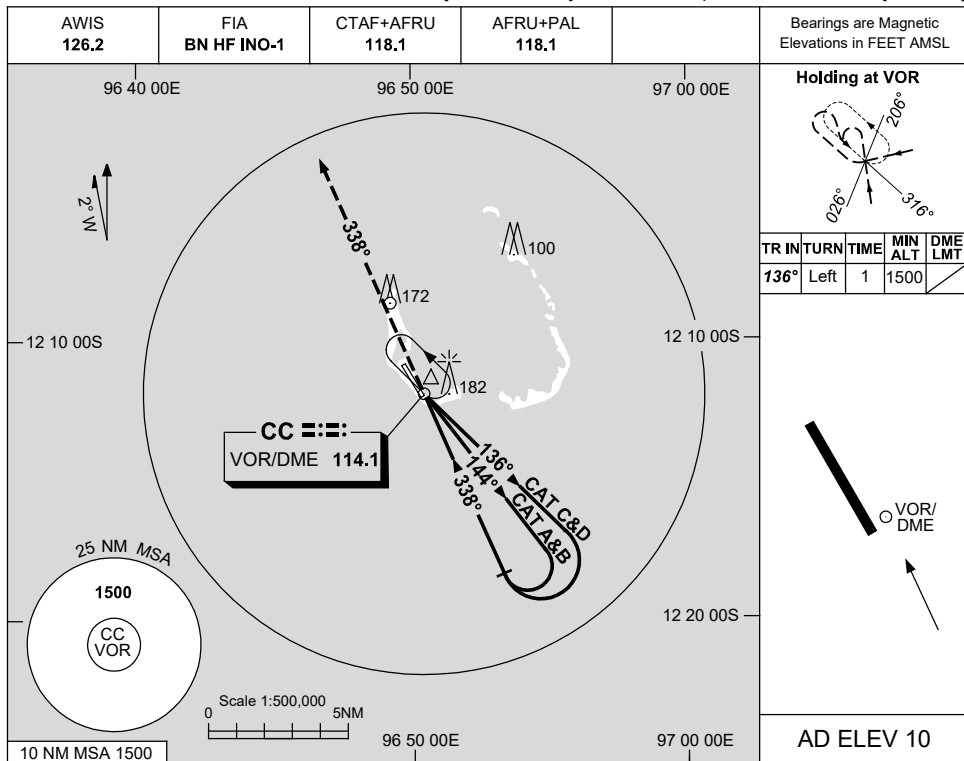
PCCNB02-165





**USE QNH** VOR-Y RWY 33  
**COCOS (KEELING) ISLANDS, AUSTRALIA (YPCC)**

5 NOV 2020



**NOTES**

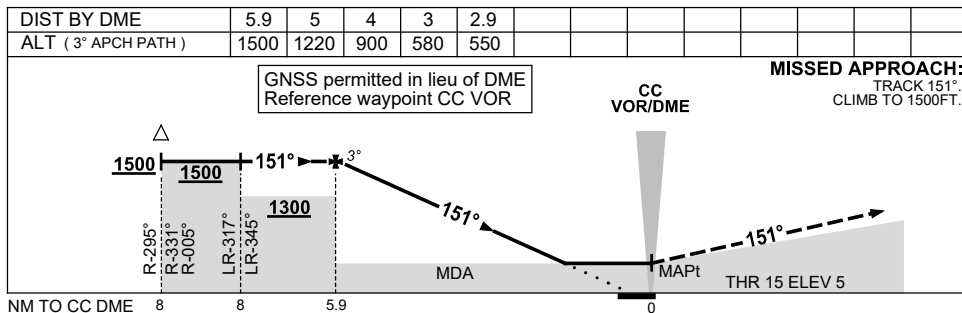
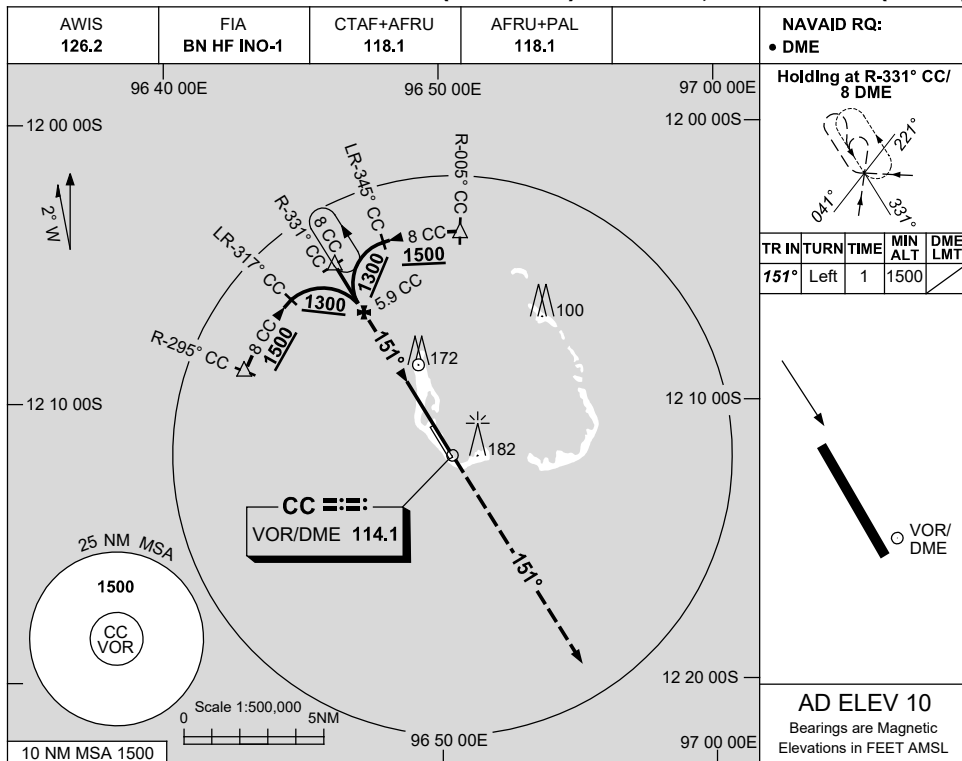
1. MAX IAS: INITIAL: 210KT.

CATEGORY	A	B	C	D
S-I VOR	<b>600</b> (590-3.4)			
CIRCLING	<b>610</b> (600-2.4)	<b>710</b> (700-4.0)	<b>800</b> (790-5.0)	
ALTERNATE	(1100-4.4)	(1200-6.0)	(1290-7.0)	

Changes: AD NAME, COORD FMT, Editorial.

PCCVO02-165

**USE QNH** **VOR-Z RWY 15**  
**5 NOV 2020** **COCOS (KEELING) ISLANDS, AUSTRALIA (YPCC)**



**NOTES**

<b>CATEGORY</b>	<b>A</b>	<b>B</b>	<b>C</b>	<b>D</b>
S-I VOR/DME	<b>550 (540-3.1)</b>			
CIRCLING	<b>610 (600-2.4)</b>	<b>710 (700-4.0)</b>	<b>800 (790-5.0)</b>	
ALTERNATE	(1100-4.4)	(1200-6.0)	(1290-7.0)	

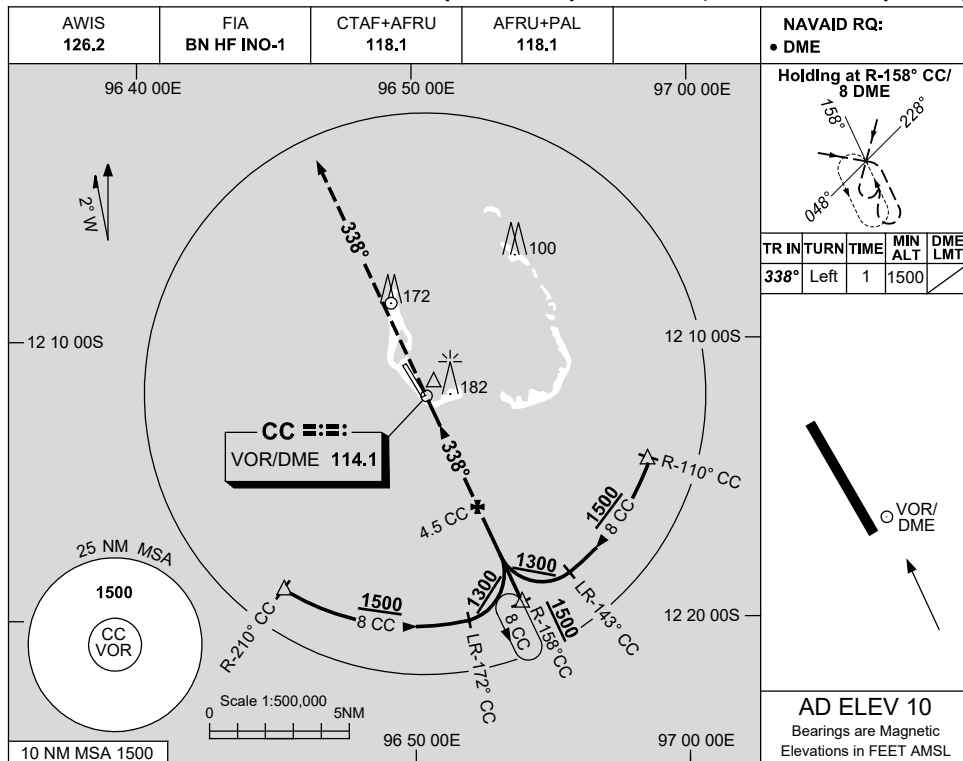
1. MAX IAS:  
INITIAL: 210KT.

Changes: AD NAME, COORD FMT, Editorial. PCCVO03-165

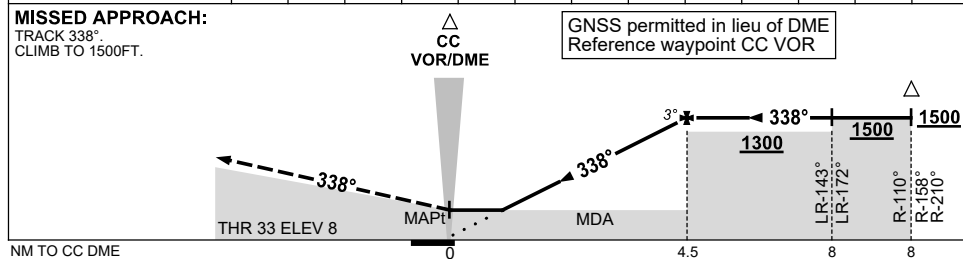
**USE QNH  
COCOS (KEELING) ISLANDS, AUSTRALIA (YPCC)**

VOR-Z RWY 33

5 NOV 2020



DIST TO CC DME	1.5	2	3	4	4.5				
ALT (3° APCH PATH)	550	700	1020	1340	1500				



**NOTES**

CATEGORY	A	B	C	D
S-I VOR/DME	<b>550 (540-3.1)</b>			
CIRCLING	<b>610 (600-2.4)</b>	<b>710 (700-4.0)</b>	<b>800 (790-5.0)</b>	
ALTERNATE	(1100-4.4)	(1200-6.0)	(1290-7.0)	

1. MAX IAS:  
INITIAL : 210KT.

Changes: AD NAME, COORD FMT, Editorial.

PCCVO04-165