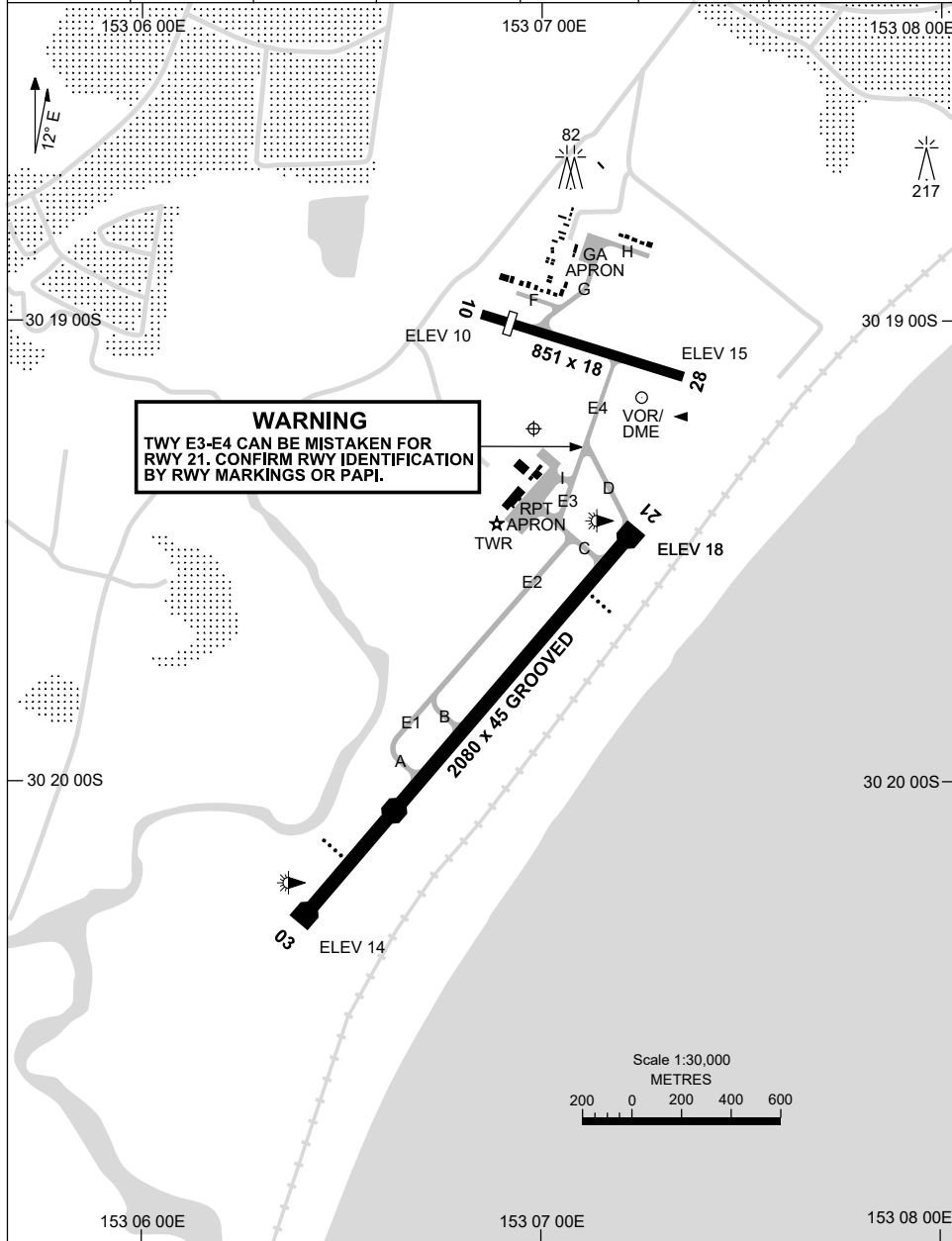


21 MAR 2024

AD ELEV 18
30 19 14S 153 06 59E

AERODROME CHART - Page 1
COFFS HARBOUR, NSW (YCFS)

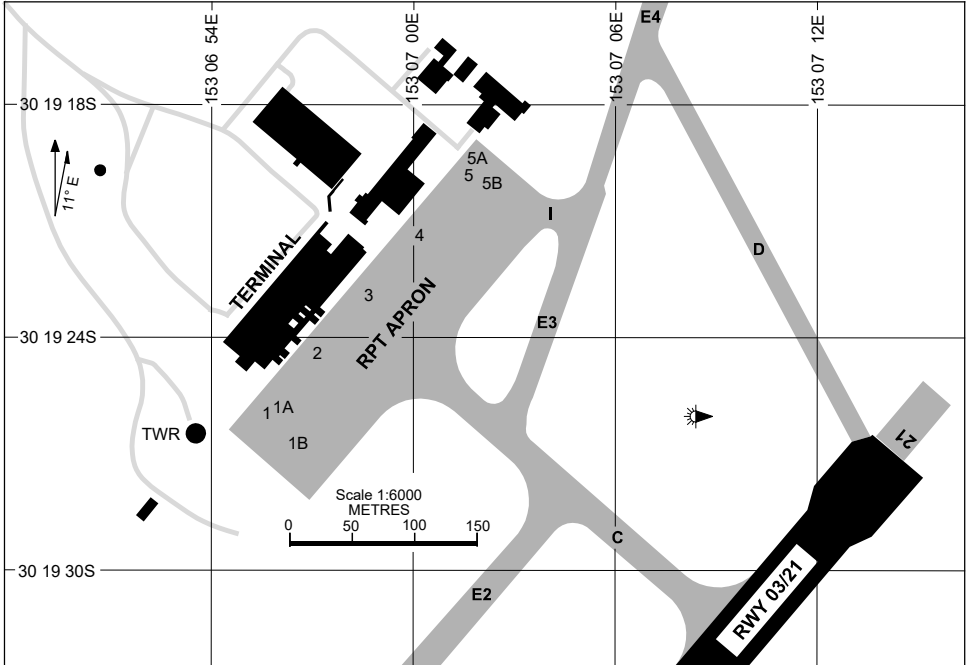
ATIS 117.0 130.3	AWIS (AH) 122.475	TWR 118.2	CTAF+AFRU (AH) 118.2	FIA (AH) BN CEN 122.6	AFRU+PAL (AH) 118.2	Bearings are Magnetic Elevations in FEET AMSL
---------------------	----------------------	--------------	-------------------------	--------------------------	------------------------	--



Changes: WDI RELOCATED, Editorial.

CFSAD01-178

21 MAR 2024



PARKING POSITION INFORMATION

STAND	CO-ORDINATES		ELEV (ft)	CAPACITY	HYDRANT FUEL
1	30 19 25.95S	153 06 55.67E	11	A321/B738	NIL
1A	30 19 25.81S	153 06 56.12E	11	S340/SW4	NIL
1B	30 19 26.70S	153 06 56.53E	11	S340/SW4	NIL
2	30 19 24.42S	153 06 57.18E	12	A321/B738	NIL
3	30 19 22.89S	153 06 58.68E	12	A321/B738	NIL
4	30 19 21.36S	153 07 00.19E	13	A321/B738	NIL
5	30 19 19.79S	153 07 01.65E	12	A321/B738	NIL
5A	30 19 19.40S	153 07 01.87E	12	B350	NIL
5B	30 19 20.03S	153 07 02.31E	12	B350	NIL

Changes: 1A, 1B, 5A, 5B ADDED, Editorial.

DME or GNSS ARRIVAL PROCEDURES COFFS HARBOUR, NSW (YCFS) Page 1

28 FEB 2019

ATIS 117.0 130.3	AWIS (AH) 122.475	TWR 118.2	CTAF+AFRU (AH) 118.2	FIA (AH) BN CEN 122.6	AFRU+PAL (AH) 118.2	Bearings are Magnetic Elevations in FEET AMSL
---------------------	----------------------	--------------	-------------------------	--------------------------	------------------------	--

25 NM MSA

10 NM MSA 5000

**DME USING CFS DME
REFERENCE WAYPOINT CFS VOR**

CFS VOR/DME 117.0

* NO CIRCLING W OF RWY 03/21.

AD ELEV 18

SECTOR A

MISSED APPROACH:

TURN LEFT,
INTERCEPT 090°
OUTBOUND FROM
CFS VOR. CLIMB TO
2500FT.

NM TO CFS VOR	30	15	7	6	5	3	0													
CIRCLING MINIMA	A,B: 1920-2.4		C: 1920-4.0		D: 1920-5.0															
NM TO CFS VOR	6.1	5	4	3	2	1.8														
ALT (3° APCH PATH)	3300	2950	2630	2310	1990	1920														

SECTOR B

MISSED APPROACH:

TURN RIGHT,
INTERCEPT 090°
OUTBOUND FROM
CFS VOR. CLIMB TO
2500FT.

NM TO CFS VOR	30	19	15	14	9	6	5	2	0										
CIRCLING MINIMA	A,B: 1190-2.4		C: 1190-4.0		D: 1190-5.0														
NM TO CFS VOR	12.5	12	11	10	9	8	7	6	5	4	3	2	1.8						
ALT (3° APCH PATH)	4600	4430	4120	3800	3480	3160	2840	2520	2200	1890	1570	1250	1190						

SECTOR C

MISSED APPROACH:

TURN RIGHT,
INTERCEPT 090°
OUTBOUND FROM
CFS VOR. CLIMB TO
2500FT.

MAX IAS: 230KT UNTIL
TRACKING 090°.
OUTBOUND FROM
CFS VOR.

NM TO CFS VOR	30	15	9	6	3	0													
CIRCLING MINIMA	A,B: 1460-2.4		C: 1500-4.0		D: 1500-5.0														
NM TO CFS VOR	6.1	5	4	3	2.7	2.6													
ALT (3° APCH PATH)	2600	2250	1930	1610	1500	1460													

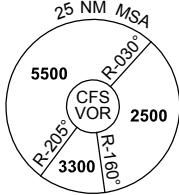
Changes: AWIS 122.475 CMSD, AWIS PH DELETED, Editorial.

CFSDG01-158

DME or GNSS ARRIVAL PROCEDURES COFFS HARBOUR, NSW (YCFS) Page 2

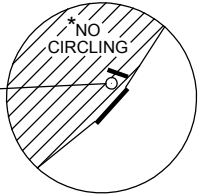
28 FEB 2019

ATIS 117.0 130.3	AWIS (AH) 122.475	TWR 118.2	CTAF+AFRU (AH) 118.2	FIA (AH) BN CEN 122.6	AFRU+PAL (AH) 118.2	Bearings are Magnetic Elevations in FEET AMSL
---------------------	----------------------	--------------	-------------------------	--------------------------	------------------------	--



**DME USING CFS DME
REFERENCE WAYPOINT CFS VOR**

CFS VOR/DME 117.0



* NO CIRCLING W
OF RWY 03/21.

AD ELEV 18

10 NM MSA 5000

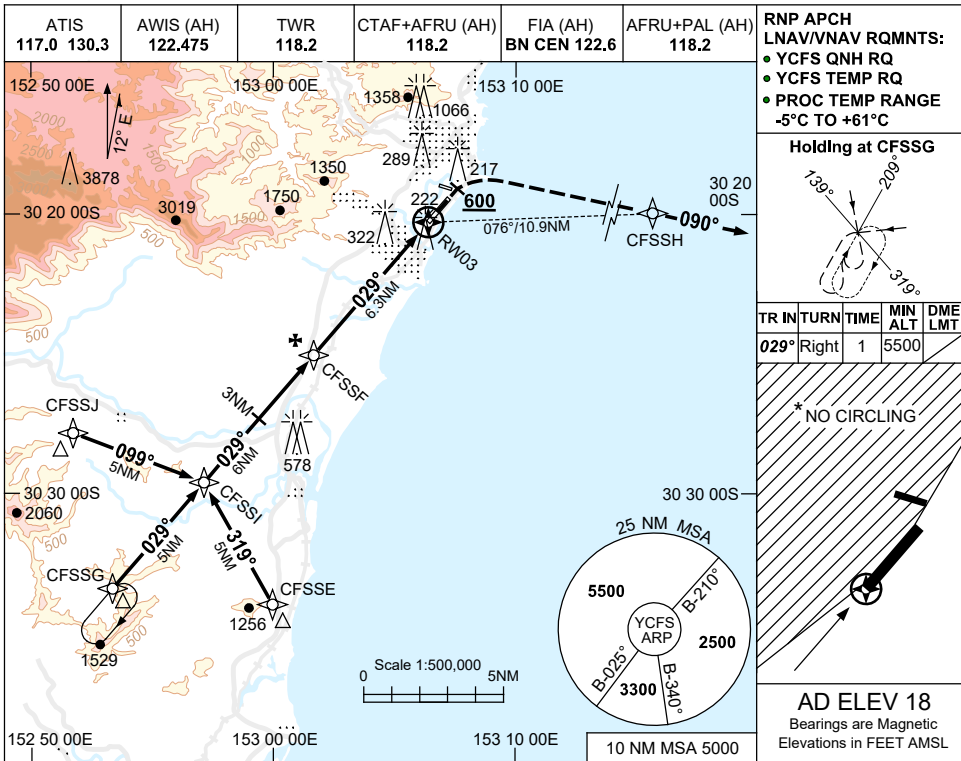
LOSQU TO CFS VOR													MISSED APPROACH: TURN RIGHT, INTERCEPT 090° OUTBOUND FROM CFS VOR. CLIMB TO 2500FT.	
NM TO CFS VOR	25	15	11	7	6	5	0							
CIRCLING MINIMA				A,B: 1920-2.4		C: 1920-4.0		D: 1920-5.0						
NM TO CFS VOR	15	13	11	10	9	8	7	6	5	4	3	2	1	0.3
ALT (3° APCH PATH)	6600	5960	5320	5000	4690	4370	4050	3730	3410	3090	2780	2460	2140	1920

USE QNH

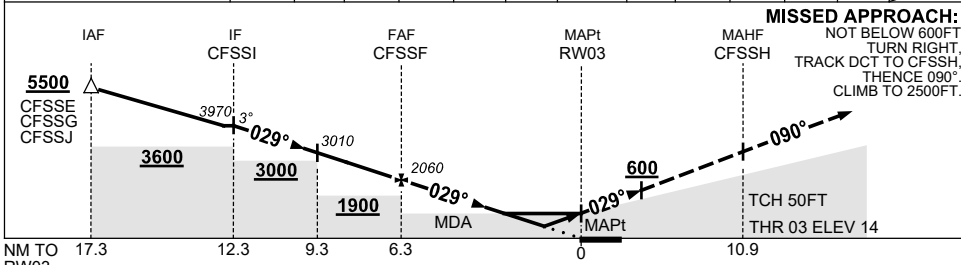
RNP RWY 03

2 DEC 2021

COFFS HARBOUR, NSW (YCFS)



NM TO NEXT WPT	CFSSI	5	4	3	2	1	CFSSF	5	4	3	2	1.4	RW03
ALT (3° APCH PATH)	3970	3650	3330	3010	2690	2370	2060	1650	1330	1010	700	520	



MISSED APPROACH:
 NOT BELOW 600FT
 TURN RIGHT,
 TRACK DCT TO CFSSH,
 THENCE 090°.
 CLIMB TO 2500FT.

CATEGORY	A	B	C	D
LNAV/VNAV		520 (506-2.9)		
LNAV		700 (682-3.9)		
CIRCLING *	800 (782-2.4)		890 (872-4.0)	890 (872-5.0)
ALTERNATE	(1282-4.4)		(1372-6.0)	(1372-7.0)

- NOTES**
- MAX IAS :
HOLDING : 210KT.
INITIAL : 210KT.
MAP TURN : 200KT.
 - NO CIRCLING WEST OF RWY 03/21.
 - COLOR : SEE SPEC NOTICES.
- CAUTION**
 DISUSED RWY (TWY E)
 NTH OF RWY 21 THR.

Changes: CHART TITLE, PBN SPECIFICATION BOX.

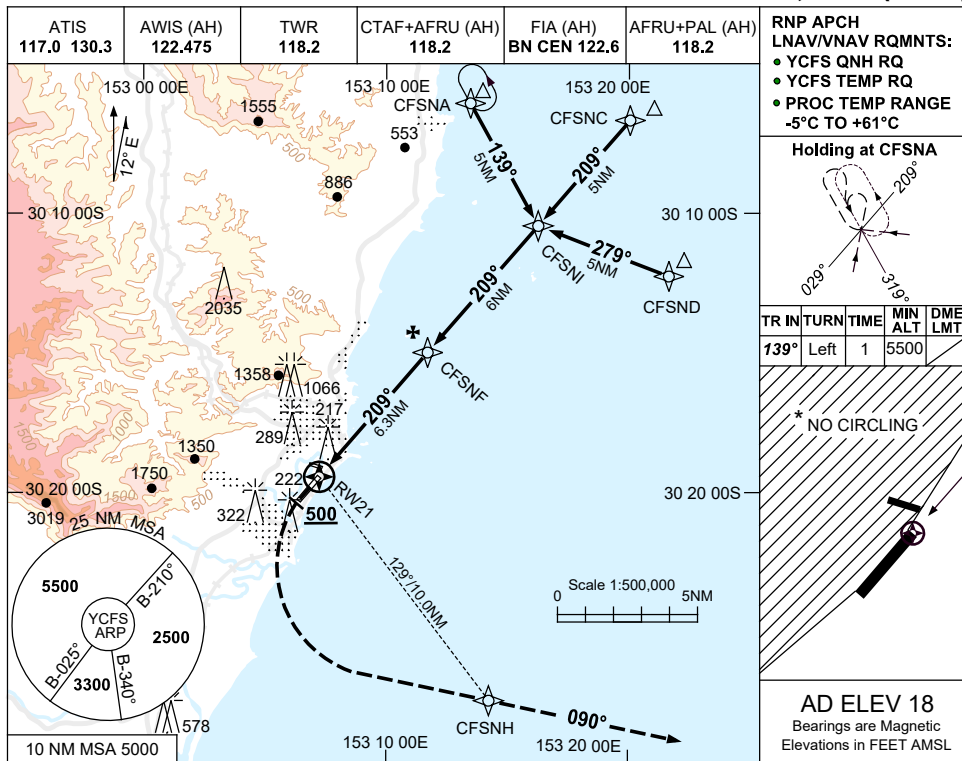
CFSGN01-169

USE QNH

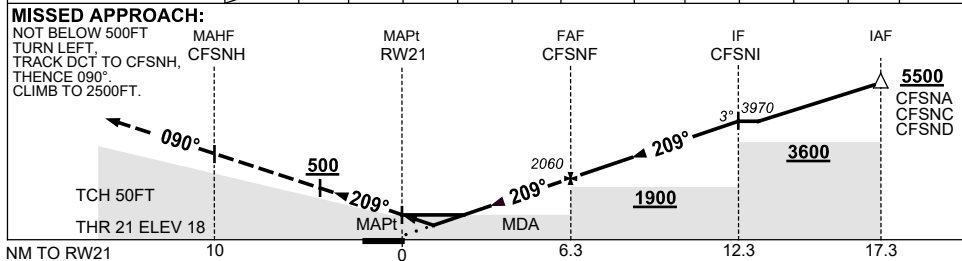
RNP RWY 21

2 DEC 2021

COFFS HARBOUR, NSW (YCFS)



NM TO NEXT WPT	RW21	1.4	1.9	3	4	5	CFSNF	1	2	3	4	5	CFSNI
ALT (3° APCH PATH)		500	680	1020	1340	1660	2060	2380	2700	3010	3330	3650	3970



NOTES

- MAX IAS:
INITIAL : 210KT.
- NO CIRCLING
WEST OF RWY 03/21.
- PROC PARTIALLY OCTA.
- COLOUR: SEE
SPEC NOTICES.

CAUTION

DISUSED RWY (TWY E)
 NTH OF RWY 21 THR.

CATEGORY	A	B	C	D
LNAV/VNAV	500 (482-2.7)			
LNAV	680 (662-3.8)			
CIRCLING*	800 (782-2.4)	890 (872-4.0)		890 (872-5.0)
ALTERNATE	(1282-4.4)		(1372-6.0)	(1372-7.0)

Changes: CHART TITLE, PBN SPECIFICATION BOX.

CFSGN02-169

NOISE ABATEMENT PROCEDURES

COFFS HARBOUR

1. PREFERRED RUNWAYS

1.1 When Tower is manned.

- | | | |
|-----------------------|---|--------|
| Landing and Take-Off. | 1 | RWY 03 |
| | 2 | RWY 21 |

Note: If traffic conditions permit, RWY 21 may be nominated as first preference for aircraft inbound from the north, north-west and east.

1.2 When Tower is closed

- | | |
|----------|------------------|
| Landing | Preferred RWY 21 |
| Take-Off | Preferred RWY 03 |

2. PREFERRED FLIGHT PATHS

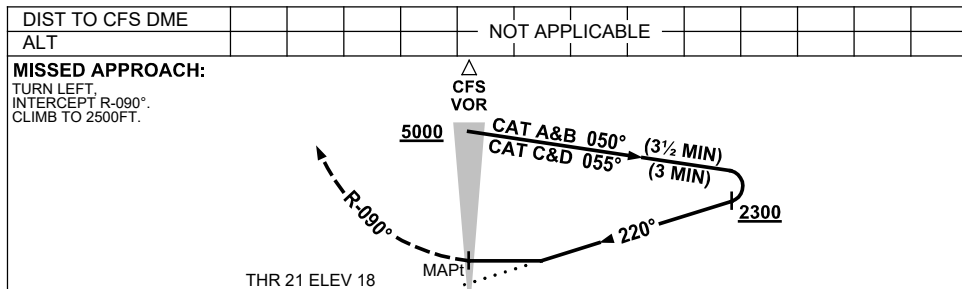
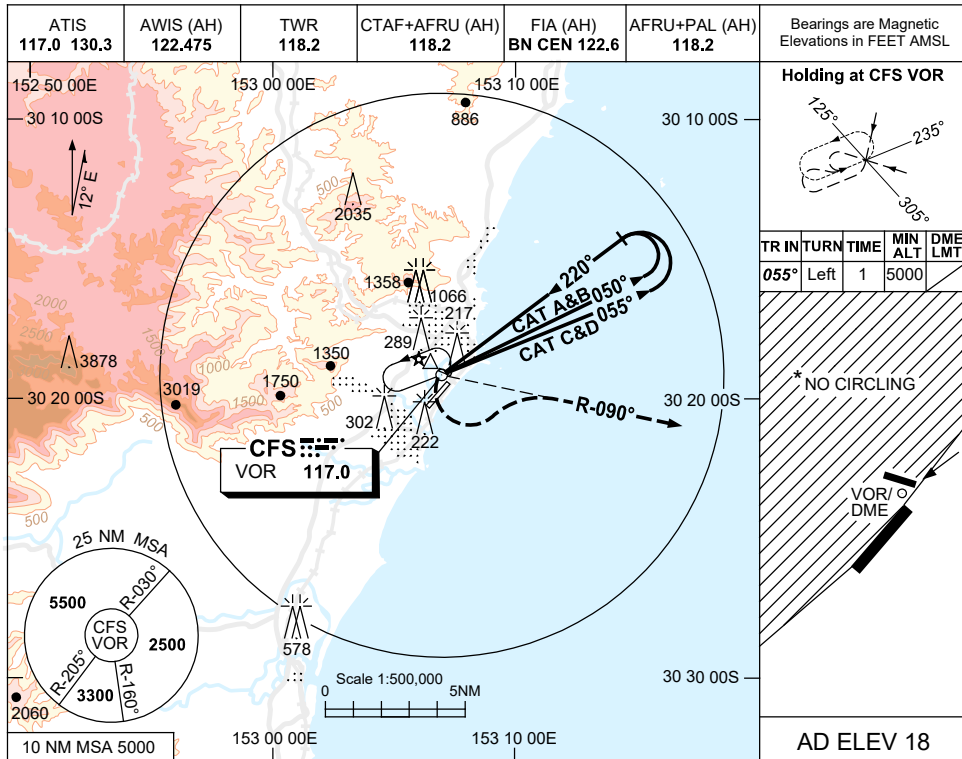
2.1 ATC will avoid approving flights over built-up areas whenever weather and traffic conditions permit.

USE QNH

VOR-Y RWY 21

27 FEB 2020

COFFS HARBOUR, NSW (YCFS)



NOTES

1. MAX IAS: : 190KT.
INITIAL : 190KT.
MAP TURN: 190KT.
HOLDING : 210KT.
- *2. NO CIRCLING WEST OF RWY 03/21.
3. COLOUR: SEE SPEC NOTICES.

CAUTION

DISUSED RWY (TWY E) NTH OF RWY 21 THR.

CATEGORY	A	B	C	D
S-I VOR	800 (782-4.5)			
CIRCLING *	800 (782-2.4)		890 (872-4.0)	890 (872-5.0)
ALTERNATE	(1282-4.4)		(1372-6.0)	(1372-7.0)

Changes: FROM SUP H85/19, COORD FMT.

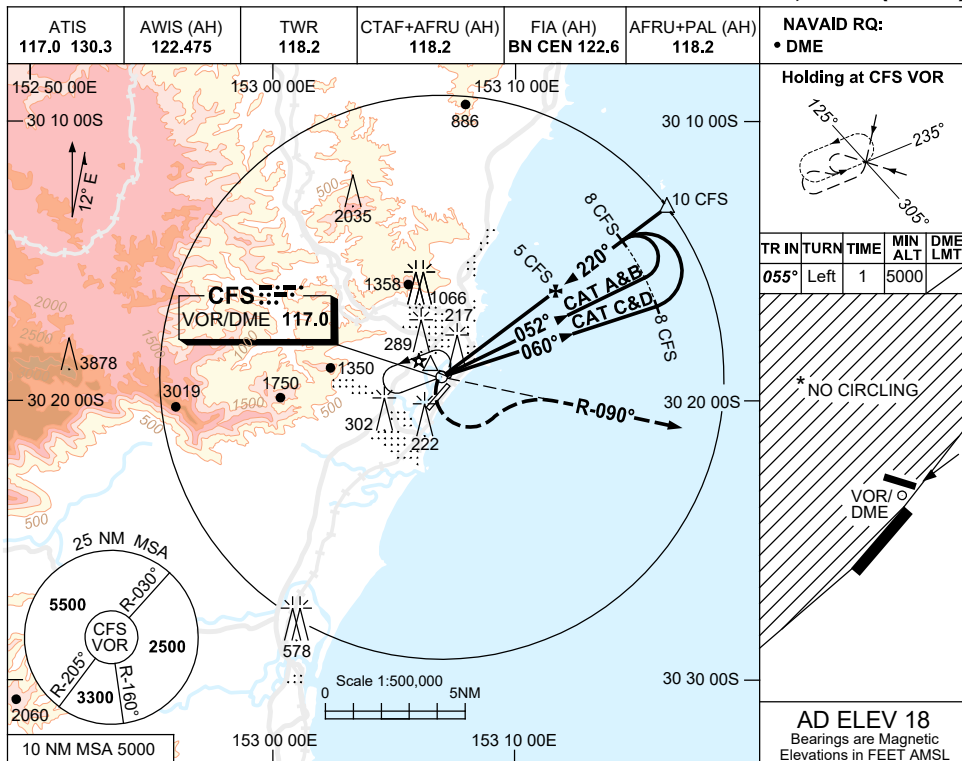
CFSV002-162

USE QNH

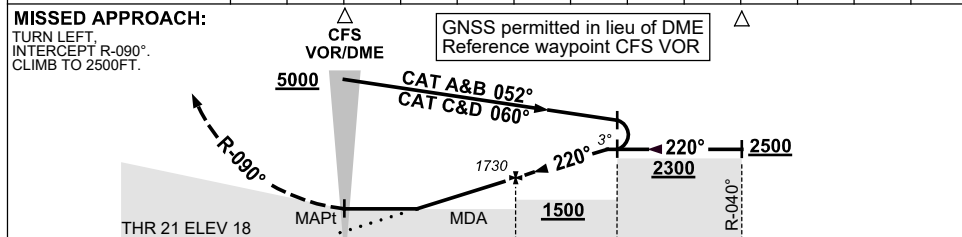
VOR-Z RWY 21

27 FEB 2020

COFFS HARBOUR, NSW (YCFS)



DIST TO CFS DME	1.8	2	3	4	5	6	7	8	9	10			
ALT (3° APCH PATH)	680	770	1090	1410	1730	2040	2360	2680	3000	3320			



NOTES

1. MAX IAS:
INITIAL : 190KT.
MAP TURN: 190KT.
HOLDING : 210KT.
- * 2. NO CIRCLING WEST OF RWY 03/21.
3. COLOUR: SEE SPEC NOTICES.

CAUTION

DISUSED RWY (TWY E) NTH OF RWY 21 THR.

CATEGORY	A	B	C	D
S-I VOR/DME	680 (662-3.8)			
CIRCLING *	800 (782-2.4)		890 (872-4.0)	
ALTERNATE	(1282-4.4)		(1372-6.0)	
			(1372-7.0)	

Changes: FROM SUP H85/19, COORD FMT.

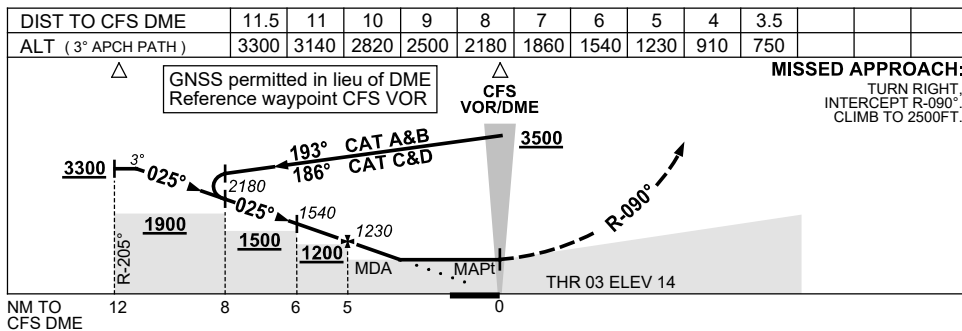
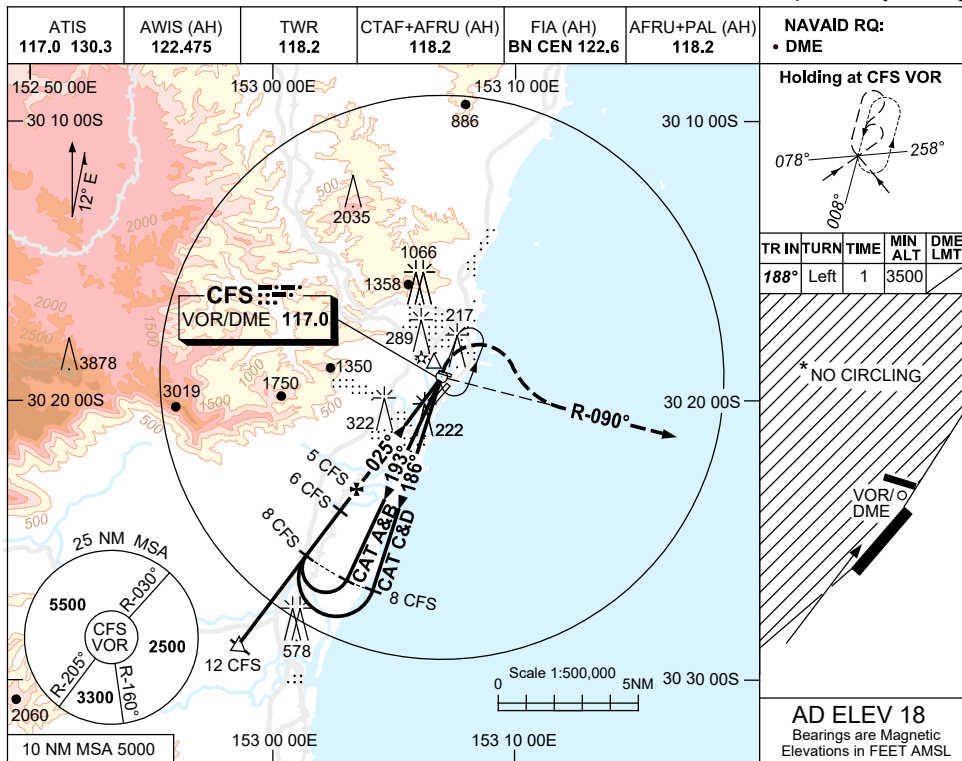
CFSV003-162

USE QNH

VOR RWY 03

27 FEB 2020

COFFS HARBOUR, NSW (YCFS)



CATEGORY	A	B	C	D
S-I VOR/DME	750 (732-4.2)			
CIRCLING *	800 (782-2.4)	890 (872-4.0)	890 (872-5.0)	
ALTERNATE	(1282-4.4)	(1372-6.0)	(1372-7.0)	

- NOTES**
- MAX IAS:
INITIAL : 190KT.
HOLDING: 210KT.
 - * NO CIRCLING
W OF RWY 03/21.
 - COLOUR: SEE
SPEC NOTICES.
- CAUTION**
DISUSED RWY (TWY E)
NTH OF RWY 21 THR.

Changes: FROM SUP H85/19, COORD FMT.

CFSV004-162