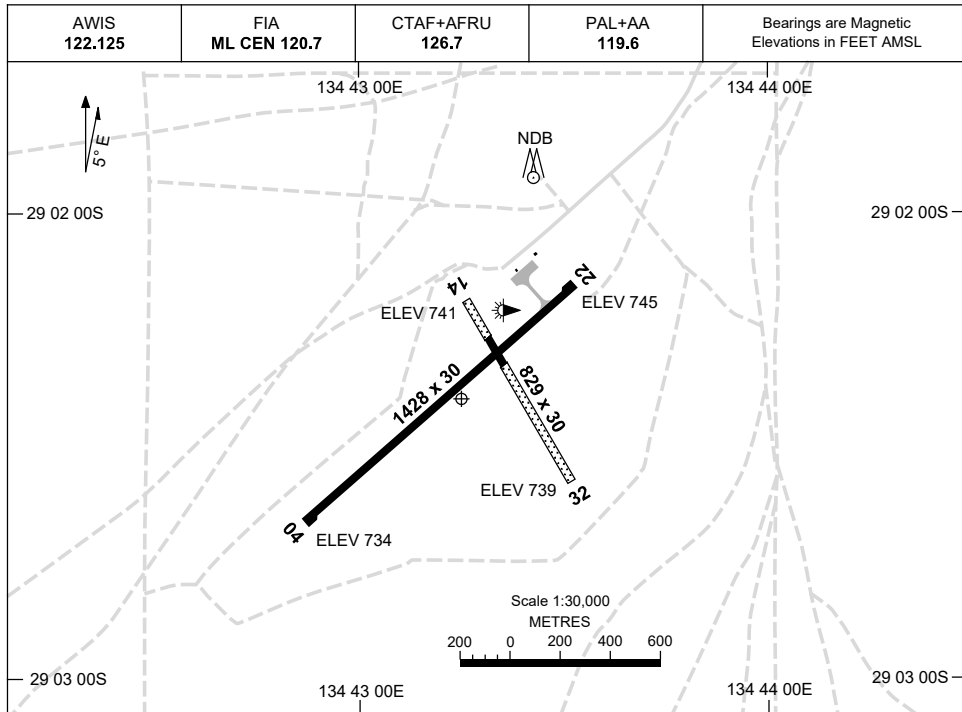


16 JUN 2022

AD ELEV 745
29 02 24S 134 43 15E

AERODROME CHART
COOBER PEDY, SA (YCBP)



	AERODROME LIGHTING	
RWY	TAXIWAY : BLUE EDGE RL : PAL+AA 119.6 , PTBL IN EMERG	
04 <small>043</small>	LIRL	
<small>223</small> 22	LIRL	
14 <small>145</small>	NIL	
<small>325</small> 32	NIL	

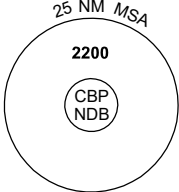
NOTES

1. AWIS RQ ONE-SECOND PULSE TO ACTIVATE.
2. FIA FREQ 120.7 AVBL 7000FT.

GNSS ARRIVAL PROCEDURES COOBER PEDY, SA (YCBP)

16 JUN 2022

AWIS 122.125	FIA ML CEN 120.7	CTAF+AFRU 126.7	PAL+AA 119.6		Bearings are Magnetic Elevations in FEET AMSL
-----------------	---------------------	--------------------	-----------------	--	--




25 NM MSA

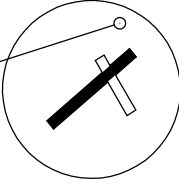
2200

CBP NDB

REFERENCE WAYPOINT CBP NDB




CBP NDB 341



10 NM MSA 2200

AD ELEV 745

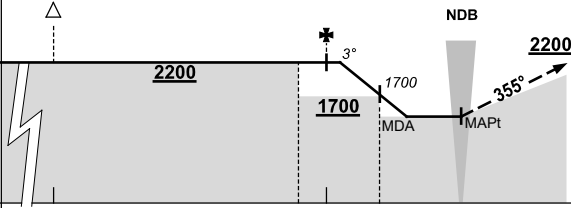
SECTOR A



133°

174°

CBP NDB



2200

1700

3°

1700

MDA

MAPt

355°

2200

NDB


MISSED APPROACH:

TURN LEFT,
TRACK 355°.
CLIMB TO 2200FT.

MAX IAS: 190KT UNTIL
ESTABLISHED ON 355°

CIRCLING MINIMA	A,B: 1390-2.4	C: 1620-4.0	D: N/A																
NM TO CBP NDB	4.6	4	3	2.7	2														
ALT (3° APCH PATH)	2200	2020	1700	1620	1390														

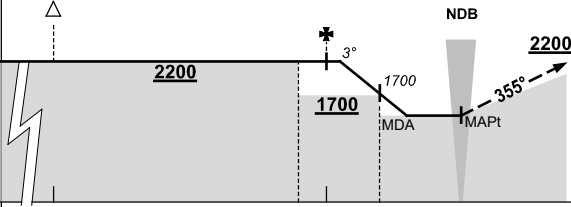
SECTOR B



175°

205°

CBP NDB



2200

1700

3°

1700

MDA

MAPt

355°

2200

NDB


MISSED APPROACH:

TURN RIGHT,
TRACK 355°.
CLIMB TO 2200FT.

MAX IAS: 190KT UNTIL
ESTABLISHED ON 355°

CIRCLING MINIMA	A,B: 1390-2.4	C: 1620-4.0	D: N/A																
NM TO CBP NDB	4.6	4	3	2.7	2														
ALT (3° APCH PATH)	2200	2020	1700	1620	1390														

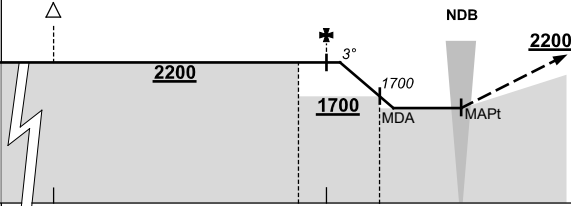
SECTOR C



133°

200°

CBP NDB



2200

1700

3°

1700

MDA

MAPt

2200

NDB

MISSED APPROACH:

CLIMB ON TRACK TO
2200FT.

PROC NOT AVBL
WHEN R246A,B
ACTIVE.

CIRCLING MINIMA	A,B: 1530-2.4	C: 1620-4.0	D: N/A																
NM TO CBP NDB	4.6	4	3	2.7	2.5														
ALT (3° APCH PATH)	2200	2020	1700	1620	1530														

Changes: SECTOR C MINIMA, DIST/ALT TABLE, PAL+AA.

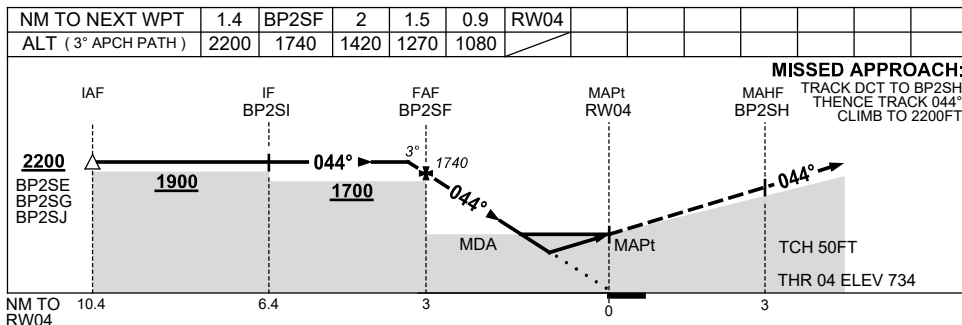
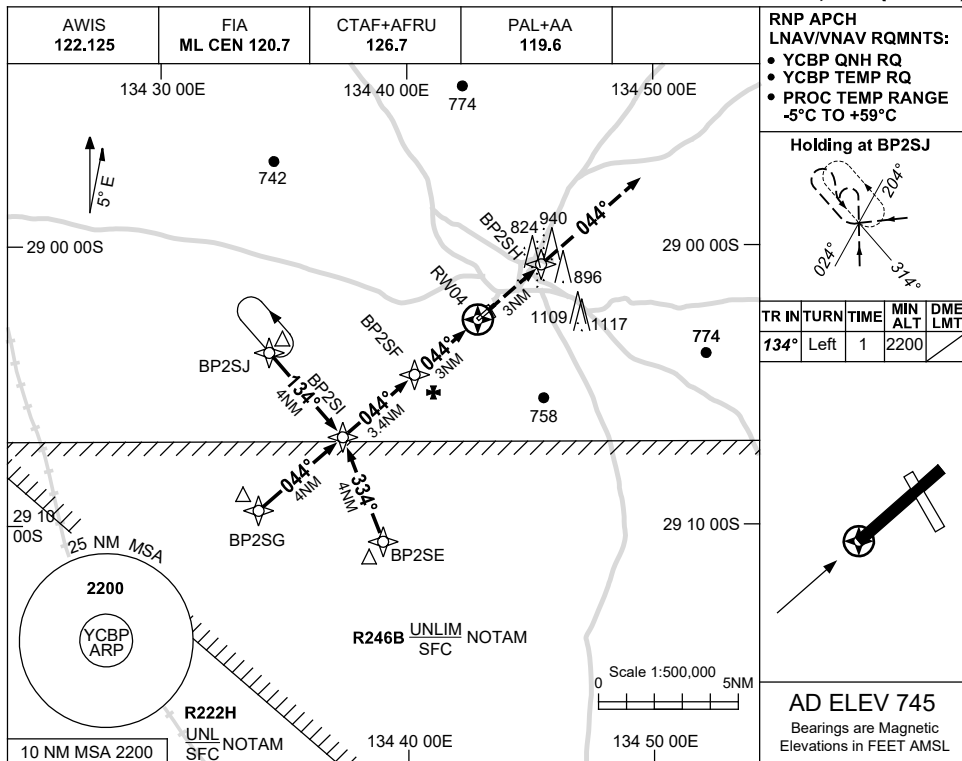
CBPDG01-171

USE QNH

RNP RWY 04

1 DEC 2022

COOBER PEDY, SA (YCBP)



NOTES

CATEGORY	A	B	C	D
LNAV/VNAV	1080 (346-1.9)			NOT APPLICABLE
LNAV	1270 (536-3.0)			
CIRCLING	1390 (645-2.4)		1620 (875-4.0)	
ALTERNATE	(1145-4.4)		(1375-6.0)	

- MAX IAS:
INITIAL : 180KT.
- PROC NOT AVBL
WHEN R246B ACTIVE.

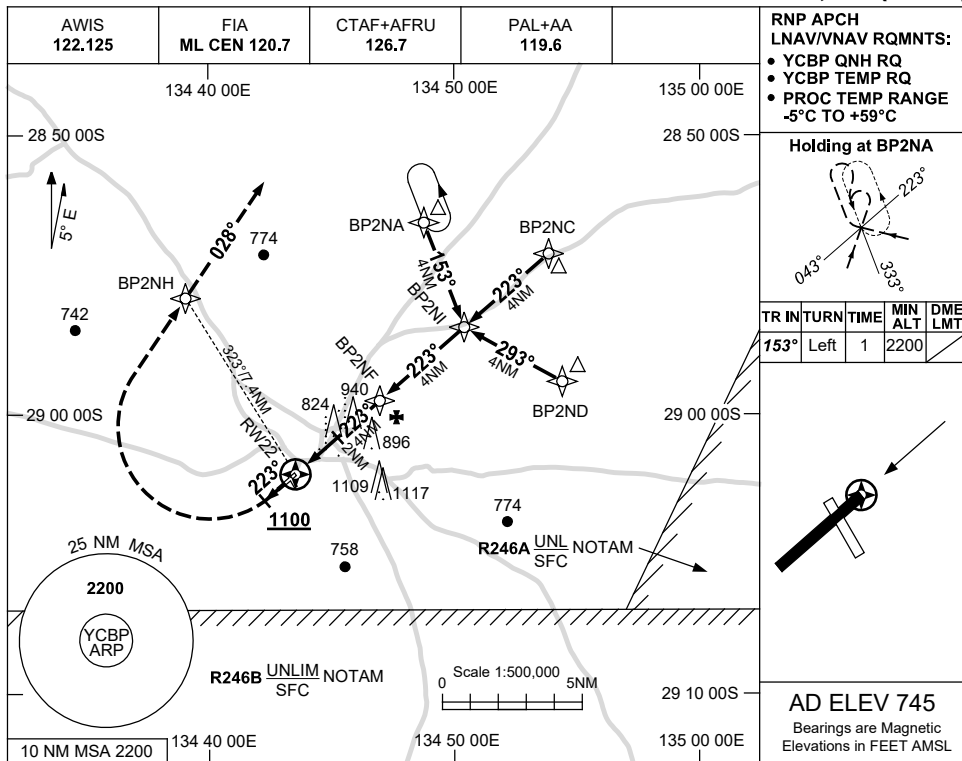
Changes: CHART TITLE, PBN SPECIFICATION BOX.

CBPGN01-173

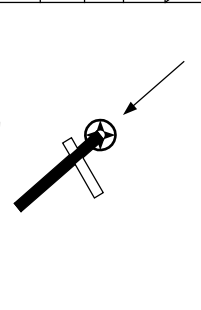
USE QNH

RNP RWY 22
COOBER PEDY, SA (YCBP)

1 DEC 2022

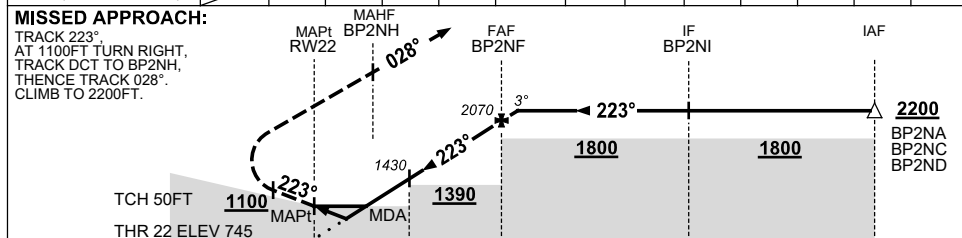


TR IN	TURN	TIME	MIN ALT	DME LMT
153°	Left	1	2200	



AD ELEV 745
 Bearings are Magnetic
 Elevations in FEET AMSL

NM TO NEXT WPT	RW22	0.9	1.5	2	3	BP2NF	0.4			
ALT (3° APCH PATH)		1080	1270	1430	1750	2070	2200			



NM TO RW22

NOTES

CATEGORY	A	B	C	D
LNAV/VNAV		1080 (335-1.9)		NOT APPLICABLE
LNAV		1270 (525-3.0)		
CIRCLING	1390 (645-2.4)		1620 (875-4.0)	
ALTERNATE	(1145-4.4)		(1375-6.0)	

1. MAX IAS:
 INITIAL : 210KT.

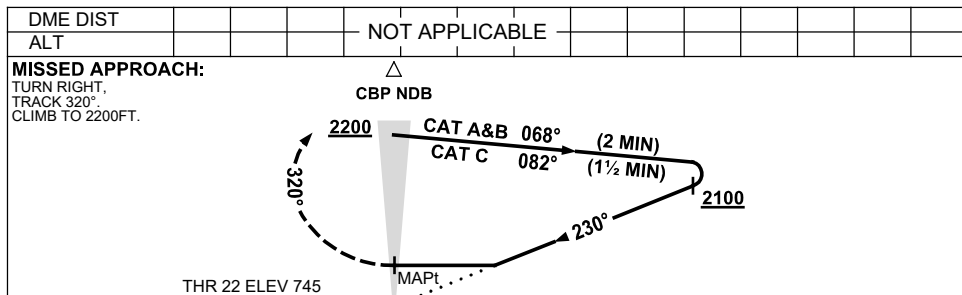
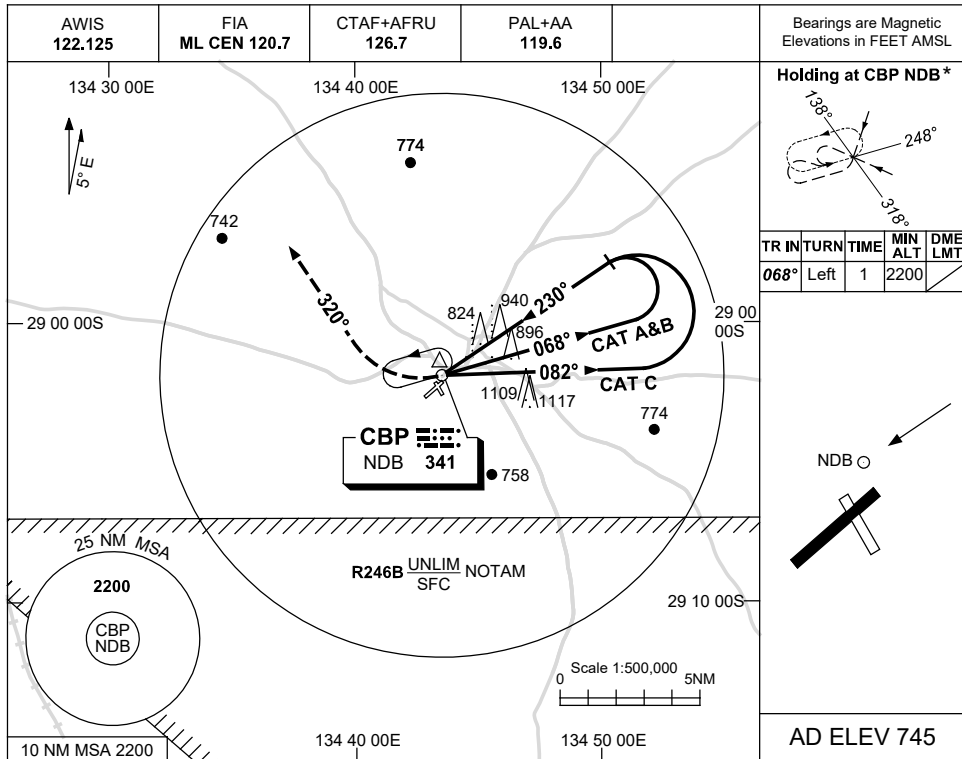
Changes: CHART TITLE, PBN SPECIFICATION BOX.

CBPGN02-173

USE QNH

NDB RWY 22
COOBER PEDY, SA (YCBP)

16 JUN 2022



NOTES

CATEGORY	A	B	C	D
S-I NDB	1390 (645-3.7)			NOT APPLICABLE
CIRCLING	1390 (645-2.4)	1620 (875-4.0)		
ALTERNATE	(1145-4.4)	(1375-6.0)		

1. MAX IAS:
 INITIAL : 210KT
 HOLDING: 180KT.
- * 2. HOLDING NOT AVBL
 WHEN R246B ACTIVE.

Changes: MAG VAR, PAL+AA.

CBPNB01-171