

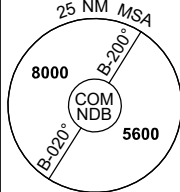
	AERODROME LIGHTING
RWY	ABN : FLG W 10 SEC TAXIWAYS : BLUE EDGE RL : AFRU+PAL 118.1 , SDBY (10 SEC)
18 <small>180</small>	PAPI 3.0° 40FT LIRL
<small>360</small> 36	PAPI 3.0° 40FT LIRL

NOTES

1. OBSTRUCTION HAZARD BEACONS EAST AND NORTH OF AD
2. AWIS (PHONE) 02 9353 6414
3. SDBY PWR AVBL SUPPLIED BY AD GENERATOR IN THE EVENT OF MAINS PWR FAILURE
4. # ML FIA 120.75 AVBL IN CIRCUIT AREA.
FOR ON GROUND COM USE ML CEN 119.4.

23 MAR 2023

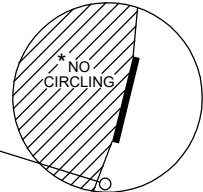
FIA ML CEN 120.75	CTAF+AFRU 118.1	AFRU+PAL 118.1			Bearings are Magnetic Elevations in FEET AMSL
----------------------	--------------------	-------------------	--	--	--



**DME USING COM DME
REFERENCE WAYPOINT COM NDB**

AWIS (PHONE) 02 9353 6414

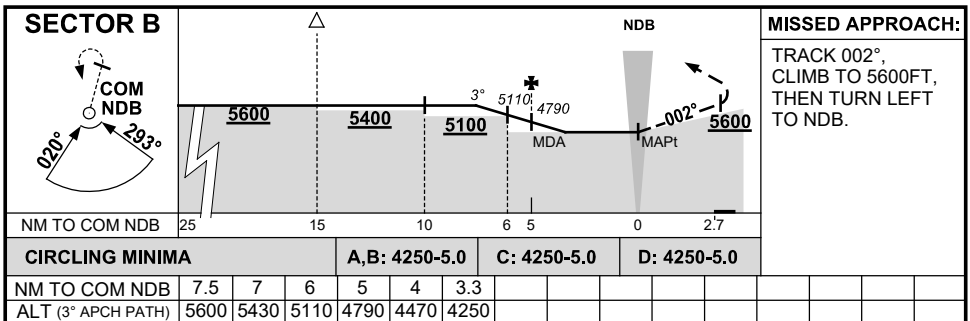
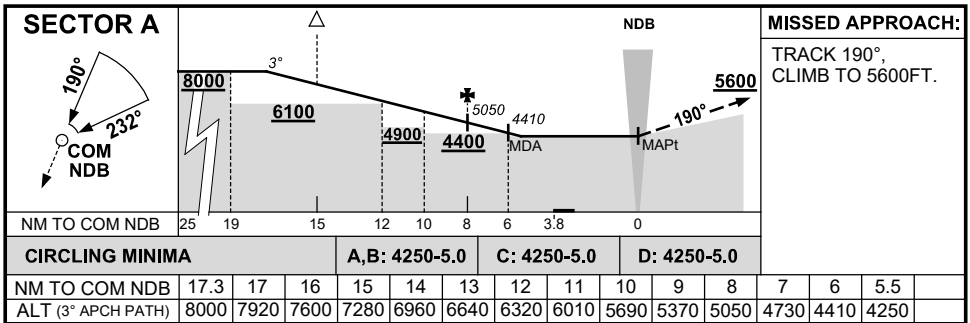
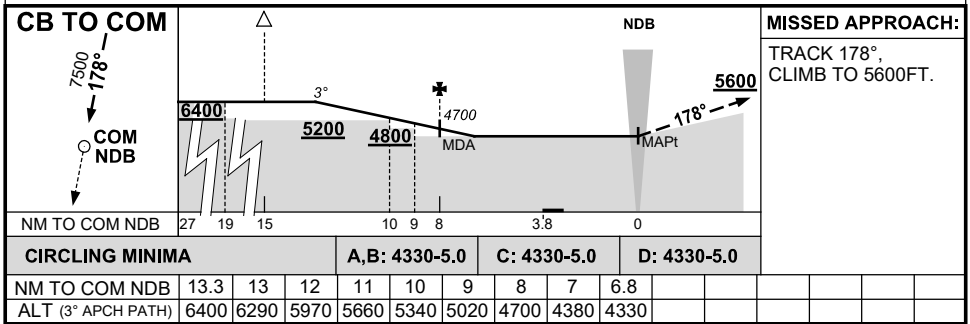
COM	293
NDB	293
DME	114.0



AD ELEV 3106

10 NM MSA 5700

* NO CIRCLING WEST OF RWY 18/36.

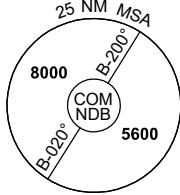


Changes: FIA

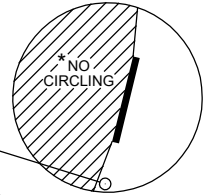
COMDG01-174

23 MAR 2023

FIA ML CEN 120.75	CTAF+AFRU 118.1	AFRU+PAL 118.1			Bearings are Magnetic Elevations in FEET AMSL
----------------------	--------------------	-------------------	--	--	--



**DME USING COM DME
REFERENCE WAYPOINT COM NDB**
AWIS (PHONE) 02 9353 6414



COM
NDB 293
DME 114.0

* NO CIRCLING WEST
OF RWY 18/36.

AD ELEV 3106

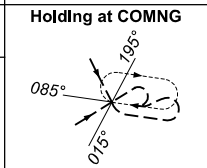
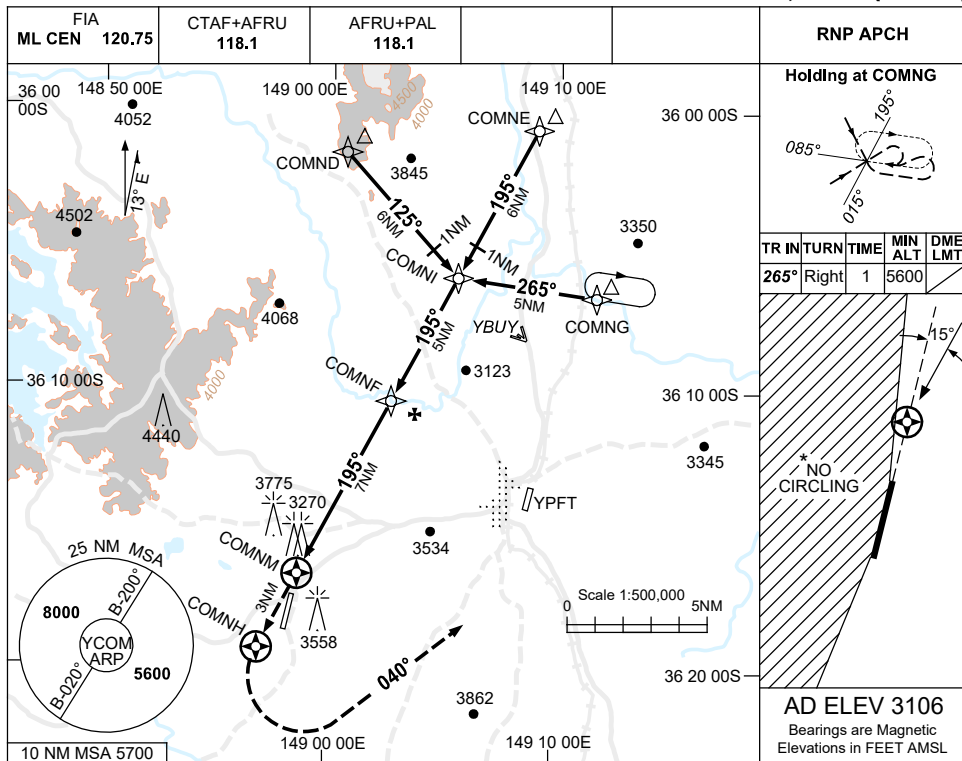
10 NM MSA 5700

SECTOR C 											MISSED APPROACH: TRACK 075°, CLIMB TO 5600FT.				
	CIRCLING MINIMA										A,B: 4250-5.0		C: 4250-5.0		D: 4250-5.0
NM TO COM NDB	11.8	11	10	9	8	7	6	5	4	3	2	1	0		
ALT (3° APCH PATH)	8000	7760	7440	7120	6800	6480	6160	5840	5530	5210	4890	4570	4250		

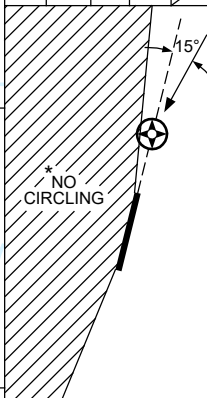
USE QNH COOMA-SNOWY MOUNTAINS, NSW (YCOM)

RNP RWY 18

5 SEP 2024



TR IN	TURN	TIME	MIN ALT	DME LMT
265°	Right	1	5600	

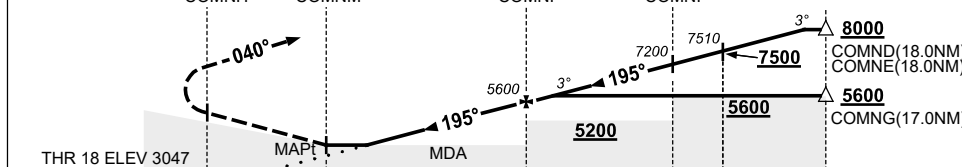


AD ELEV 3106
Bearings are Magnetic
Elevations in FEET AMSL

NM TO NEXT WPT	COMNH	1.4	2	3	4	5	6	COMNF	1	2	3	4	COMNI	1	2.5
ALT (3° APCH PATH)		3830	4010	4330	4650	4970	5280	5600	5920	6240	6560	6880	7200	7510	8000

MISSED APPROACH:

TRACK DCT TO COMNH.
TURN LEFT TRACK 040°.
CLIMB TO 5600ft.



NOTES

- MAX IAS:
INITIAL : 210KT.
- * NO CIRCLING WEST OF RWY 18 / 36.
- AWIS (PHONE)
02 9353 6414
- COLOUR:** SEE SPEC NOTICES.
- CAUTION:** INITIAL SEGMENTS OVERLAY YPFT RNP N.

CATEGORY	A	B	C	D
LNAV	3830 (783-4.5)			NOT APPLICABLE
CIRCLING *	4060 (954-2.4)		4160 (1054-4.0)	
ALTERNATE	(1454-4.4)		(1554-6.0)	

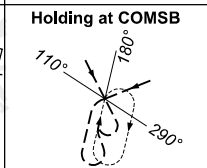
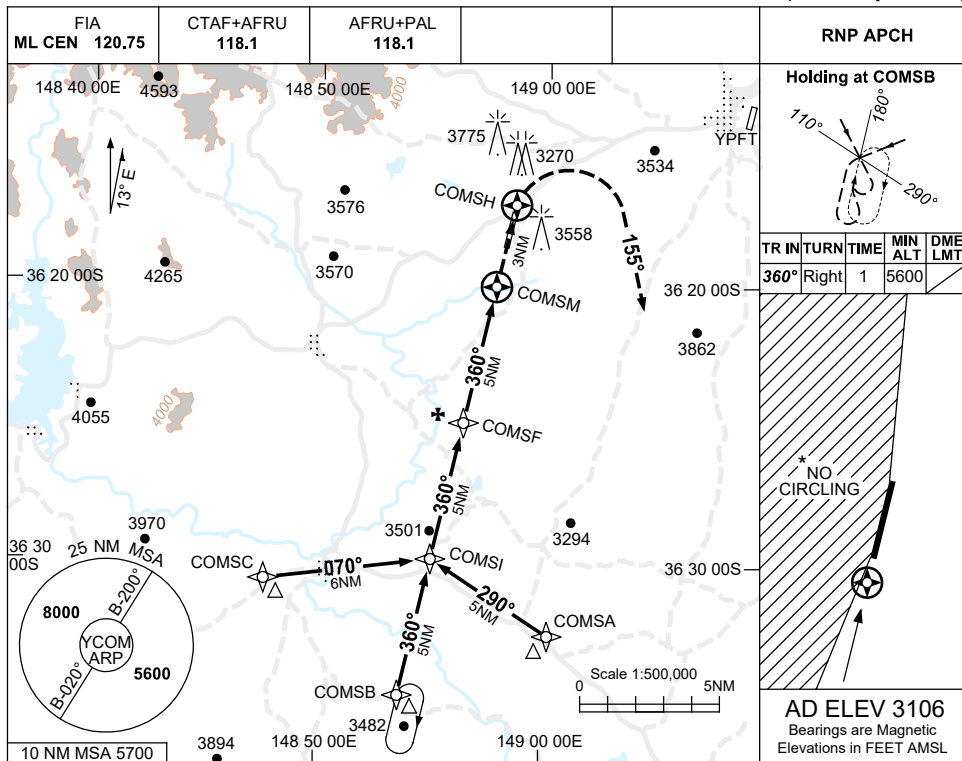
Changes: LIT OBSTACLES.

COMGN01-180

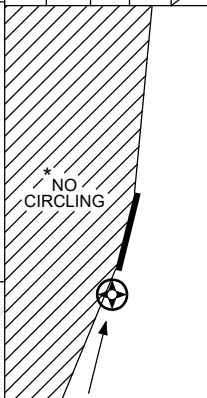
USE QNH COOMA-SNOWY MOUNTAINS, NSW (YCOM)

RNP RWY 36

5 SEP 2024

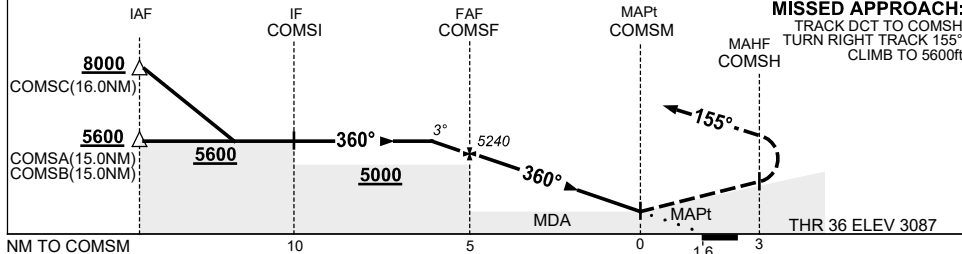


TR	IN	TURN	TIME	MIN ALT	DME LMT
360°	Right		1	5600	



AD ELEV 3106
Bearings are Magnetic
Elevations in FEET AMSL

NM TO NEXT WPT	1.1	COMSF	4	3	2	1	0.3	COMSM
ALT (3° APCH PATH)	5600	5240	4920	4600	4280	3960	3740	



MISSED APPROACH:
TRACK DCT TO COMSH.
TURN RIGHT TRACK 155°
CLIMB TO 5600ft.

NOTES

- MAX IAS:
INITIAL : 210KT.
MAP TURN: 175KT.
- NO CIRCLING WEST OF RWY 18 / 36.
- AWIS (PHONE)
02 9353 6414
- COLOUR: SEE SPEC NOTICES.

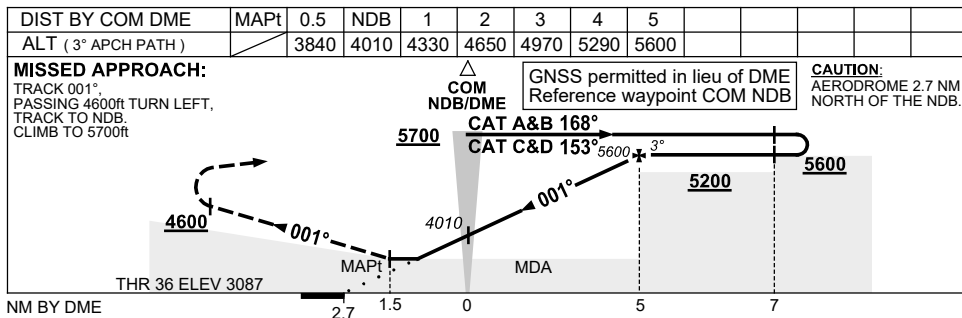
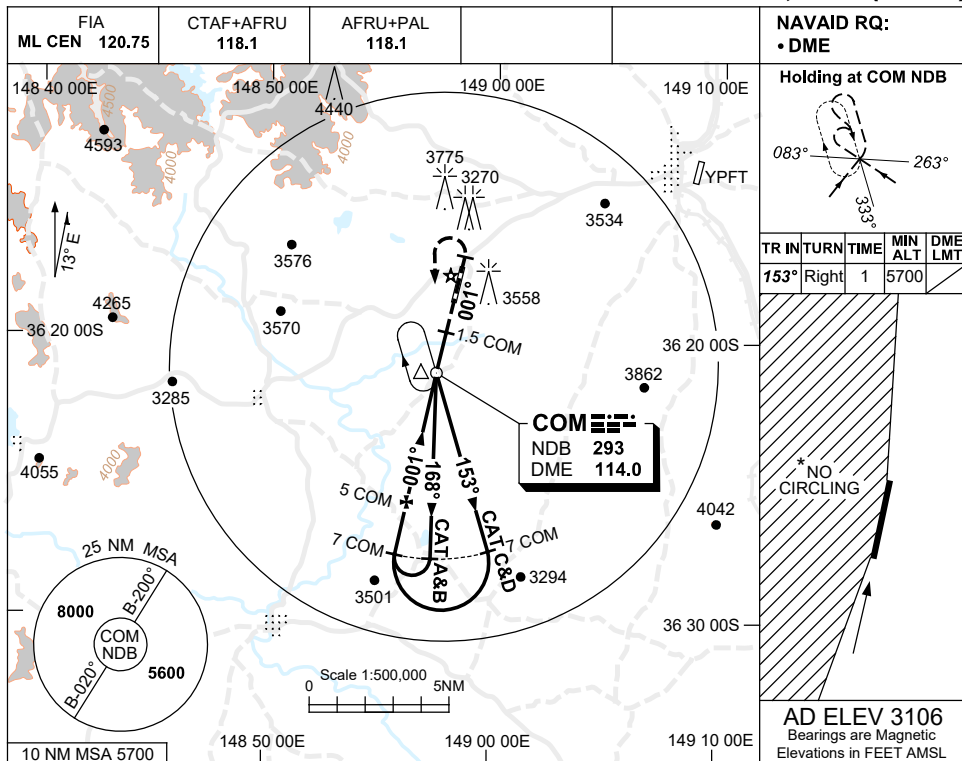
CATEGORY	A	B	C	D
LNAV	3740 (653-3.7)			NOT APPLICABLE
CIRCLING *	4060 (954-2.4)		4160 (1054-4.0)	
ALTERNATE	(1454-4.4)		(1554-6.0)	

Changes: LIT OBSTACLES, Editorial. COMGN02-180

USE QNH
COOMA-SNOWY MOUNTAINS, NSW (YCOM)

NDB-Z RWY 36

5 SEP 2024



CATEGORY	A	B	C	D
S-I NDB/DME	3840 (753-4.3)			
CIRCLING *	4060 (954-2.4)		4160 (1054-5.0)	
ALTERNATE	(1454-4.4)		(1554-7.0)	

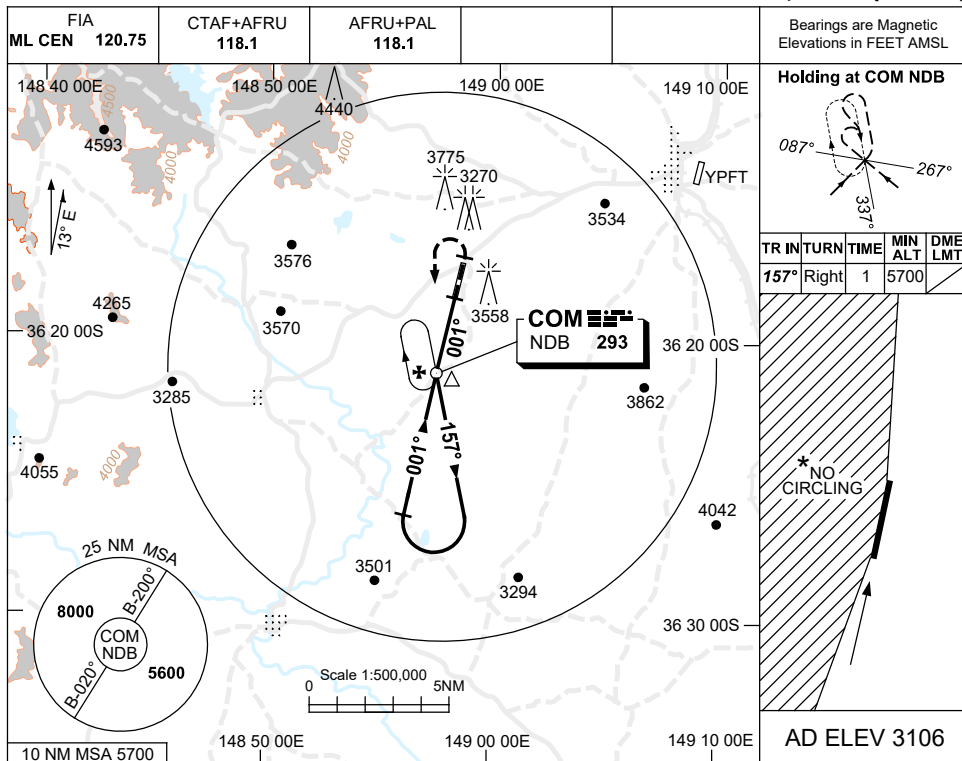
- NOTES**
- MAX IAS: INITIAL : 210KT.
 - NO CIRCLING WEST OF RWY 18 / 36.
 - AWIS (PHONE) 02 9353 6414
 - COLOUR: SEE SPEC NOTICES.

Changes: LIT OBSTACLES, Editorial.

COMNB01-180

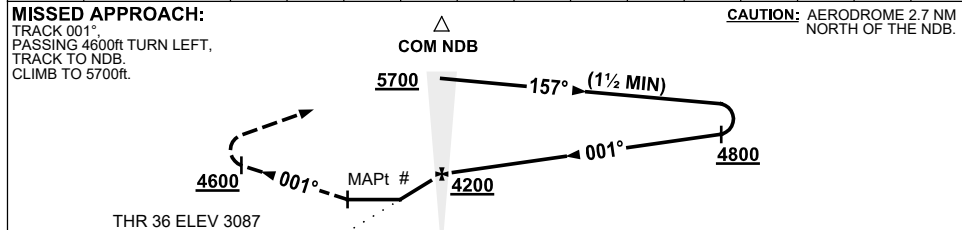
**USE QNH NDB-Y RWY 36
COOMA-SNOWY MOUNTAINS, NSW (YCOM)**

5 SEP 2024



Bearings are Magnetic Elevations in FEET AMSL				
Holding at COM NDB				
TR	IN	TURN	TIME	MIN ALT
157°	Right	1	5700	DME LMT
* NO CIRCLING				
AD ELEV 3106				

NDB	GS (KNOTS)	60	70	80	90	100	110	120	130				
to MAPt	TIME (MIN:SEC)	2:45	2:22	2:04	1:50	1:39	1:30	1:23	1:17				



NOTES

CATEGORY	A	B	D
S-I NDB	3940 (853-4.2)		NOT APPLICABLE
CIRCLING *	4060 (954-2.4)		
ALTERNATE	(1454-4.4)		

*1. NO CIRCLING WEST OF RWY 18 / 36.
 #2. GRADIENT AFTER FAF 6.4% (390FT/NM).
 3. AWIS (PHONE) 02 9353 6414
 4. COLOUR: SEE SPEC NOTICES.

Changes: LIT OBSTACLES, Editorial. COMNB02-180