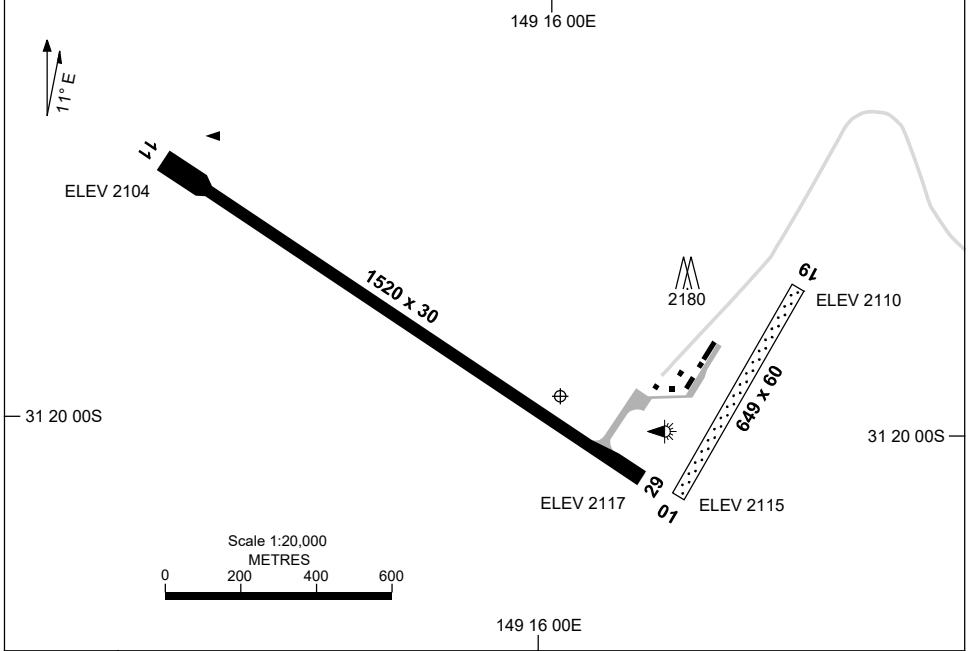


16 JUN 2022

AD ELEV 2117  
31 19 57S 149 16 02E

AERODROME CHART  
**COONABARABRAN, NSW (YCBB)**

AWIS 125.45	FIA BN CEN 127.1	CTAF 126.7	PAL+AA 119.2	Bearings are Magnetic Elevations in FEET AMSL
----------------	---------------------	---------------	-----------------	--



RWY		AERODROME LIGHTING
		TAXIWAY : BLUE EDGE RL : PAL+AA 119.2
<b>11</b> <sup>112</sup>		LIRL
<sup>292</sup> <b>29</b>		LIRL
<b>01</b> <sup>018</sup>		NIL
<sup>198</sup> <b>19</b>		NIL

**NOTES**

1. AWIS RQ 1 SEC TRANSMIT PULSE TO ACTIVATE.
2. FIA FREQ 127.1 AVBL IN CIRCUIT AREA.

Changes: PAL+AA

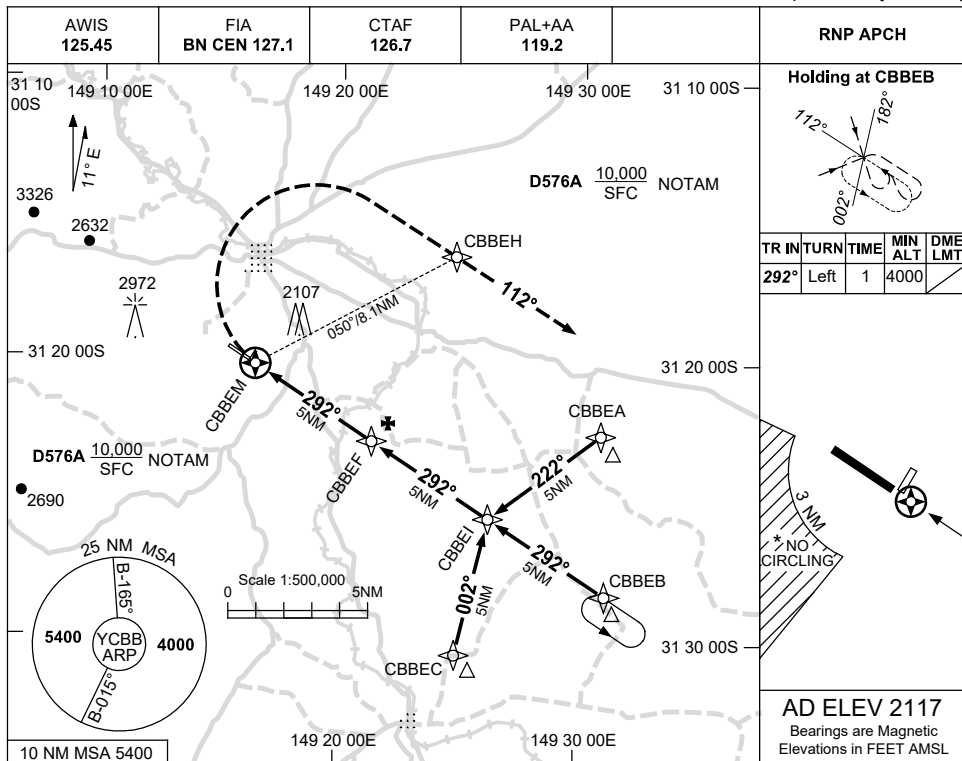
CBBAD01-171

USE QNH

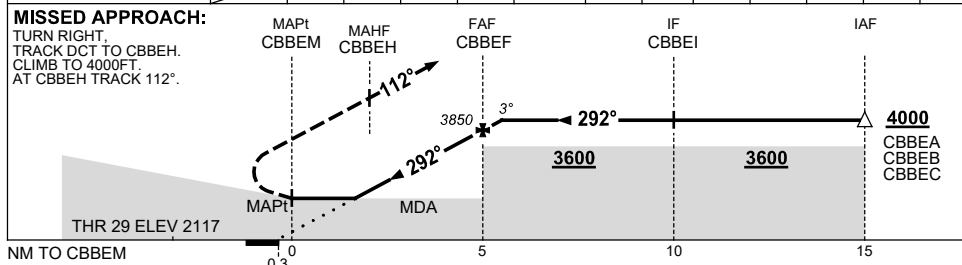
RNP RWY 29

21 MAR 2024

COONABARABRAN, NSW (YCBB)



NM TO NEXT WPT	CBBEM	1.2	2	3	4	CBBEF	0.5				
ALT (3° APCH PATH)		2650	2890	3210	3530	3850	4000				



**NOTES**

CATEGORY	A	B	C	D
LNAV	2650 (533-3.0)			NOT APPLICABLE
CIRCLING*	2900 (783-2.4)		3130 (1013-4.0)	
ALTERNATE	(1283-4.4)		(1513-6.0)	

- 1. MAX IAS: INITIAL : 210KT.
- \* 2. NO CIRCLING IN SECTOR SW OF RWY 11 & RWY 01 BEYOND 3NM.

Changes: D576A ADDED.

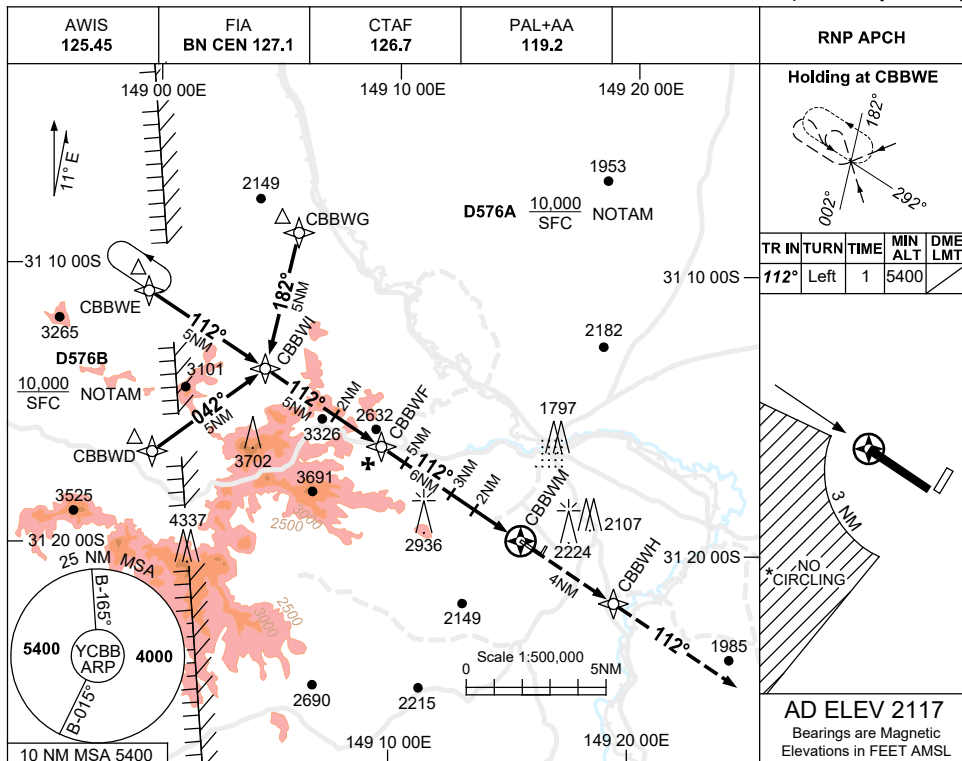
CBBGN01-178

USE QNH

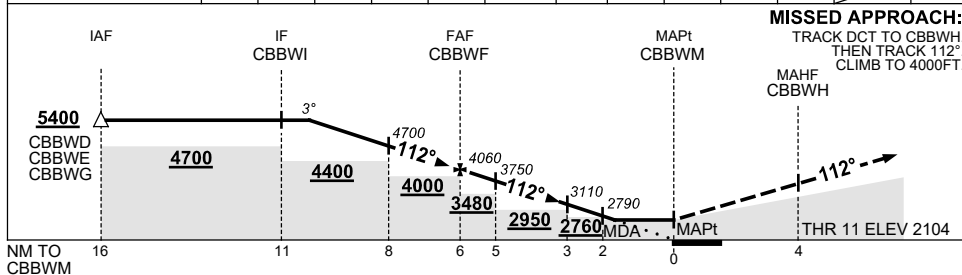
RNP RWY 11

21 MAR 2024

COONABARABRAN, NSW (YCBB)



NM TO NEXT WPT	4.2	4	3	2	1	CBBWF	5	4	3	2	1.6	CBBWM
ALT (3° APCH PATH)	5400	5340	5020	4700	4380	4060	3750	3430	3110	2790	2660	



**MISSED APPROACH:**  
 TRACK DCT TO CBBWH.  
 THEN TRACK 112°. CLIMB TO 4000FT.

**NOTES**

CATEGORY	A	B	C	D
LNAV	2660 (556-3.2)			NOT APPLICABLE
CIRCLING *	2900 (783-2.4)		3130 (1013-4.0)	
ALTERNATE	(1283-4.4)		(1513-6.0)	

- MAX IAS: INITIAL : 210KT.
- \* NO CIRCLING IN SECTOR SW OF RWY 11 & RWY 01 BEYOND 3NM.
- COLOUR SEE SPEC NOTICE.

Changes: D576A & B ADDED

CBBGN02-178