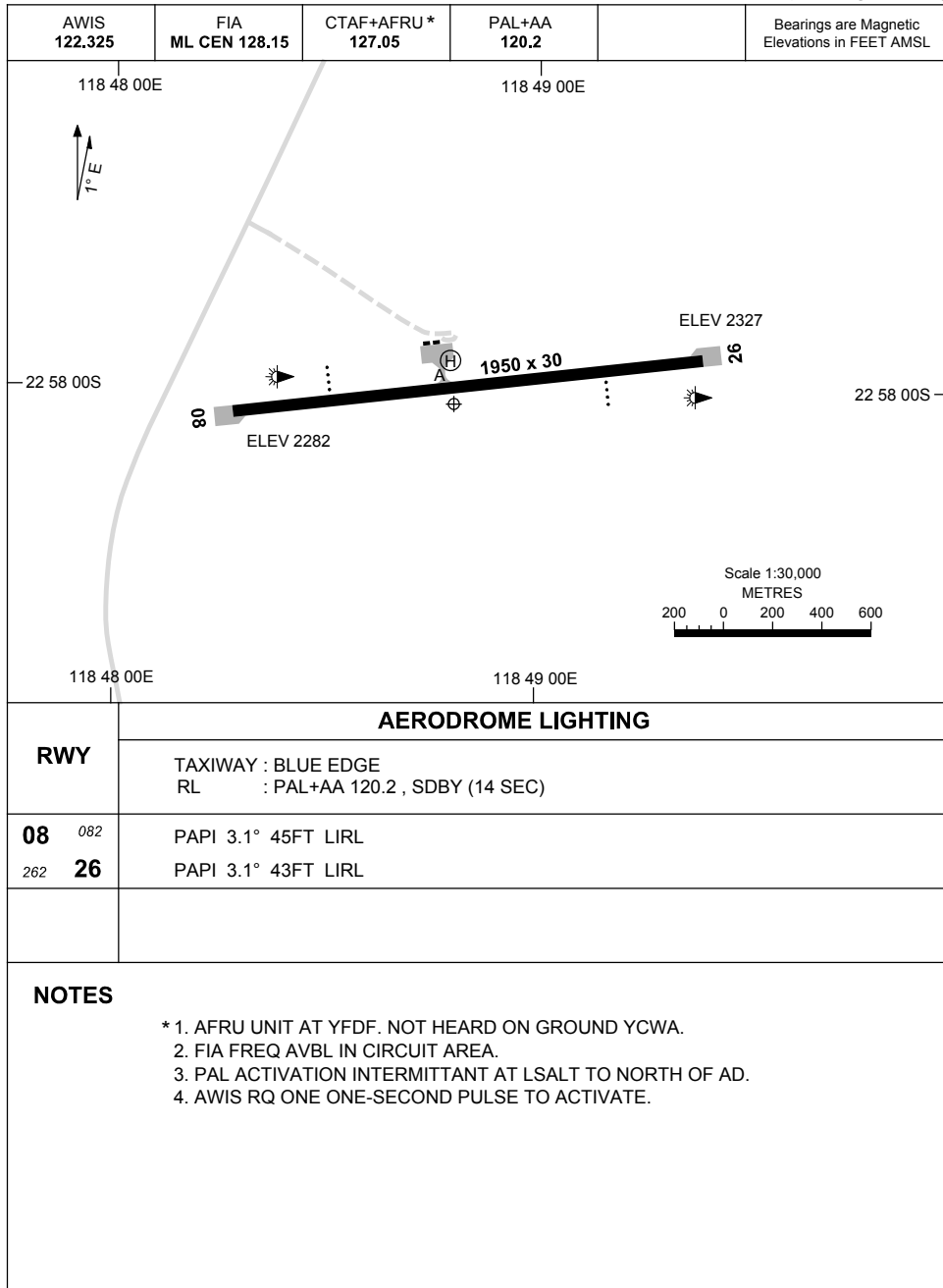


23 MAR 2023

AD ELEV 2327
22 58 00S 118 48 48E

AERODROME CHART
COONDEWANNA, WA (YCWA)



RWY	AERODROME LIGHTING
	TAXIWAY : BLUE EDGE RL : PAL+AA 120.2 , SDBY (14 SEC)
08 <small>082</small>	PAPI 3.1° 45FT LIRL
<small>262</small> 26	PAPI 3.1° 43FT LIRL

NOTES

- * 1. AFRU UNIT AT YDF. NOT HEARD ON GROUND YCWA.
- 2. FIA FREQ AVBL IN CIRCUIT AREA.
- 3. PAL ACTIVATION INTERMITTANT AT LSALT TO NORTH OF AD.
- 4. AWIS RQ ONE ONE-SECOND PULSE TO ACTIVATE.

Changes: THR ELEV.

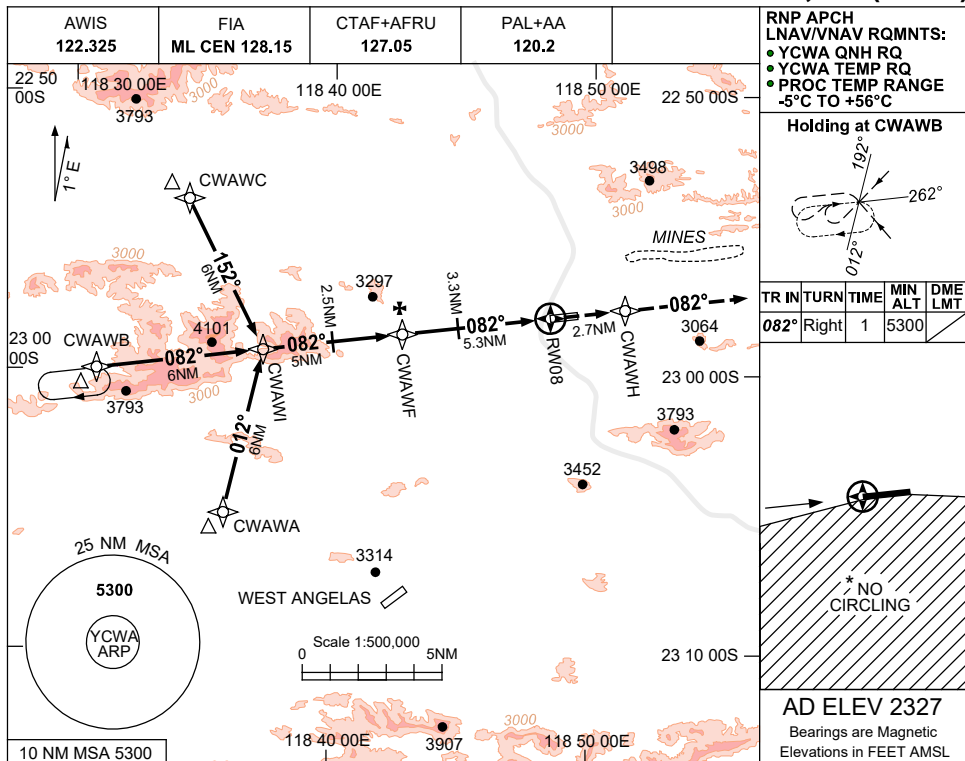
CWAAD01-174

USE QNH

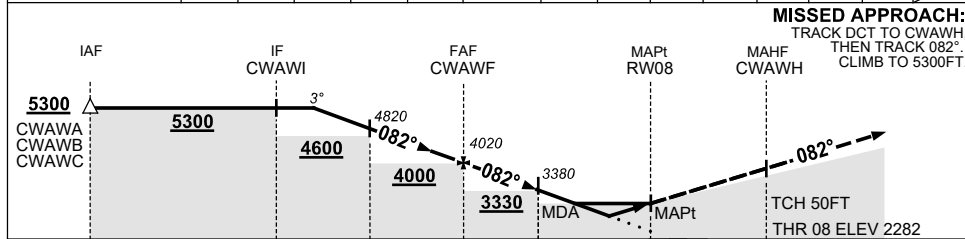
RNP RWY 08

30 NOV 2023

COONDEWANNA, WA (YCWA)



NM TO NEXT WPT	4	3	2.5	2	1	CWAWF	5	4	3.3	3	2	1.9	1.2	RW08
ALT (3° APCH PATH)	5300	4970	4820	4660	4340	CWAWF	4020	3920	3610	3380	3290	2970	2940	2710



NOTES

1. MAX IAS:
INITIAL : 230KT.
- *2. NO CIRCLING
SOUTH OF RWY 08/26.
3. BLASTING OPS
(SEE ERSA)
4. APCH PATH ANGLE
DOES NOT COINCIDE
WITH PAPI ON GLIDE
SLOPE INDICATION.
5. COLOUR: SEE
SPEC NOTICES.

CATEGORY	A	B	C	D
LNAV/VNAV		2710 (428-2.4)		
LNAV		2940 (658-3.7)		
CIRCLING *	3340 (1013-2.4)		3700 (1373-4.0) 4160 (1833-5.0)	
ALTERNATE	(1513-4.4)		(1873-6.0) (2333-7.0)	

Changes: CHART TITLE, PBN SPECIFICATION BOX, Editorial.

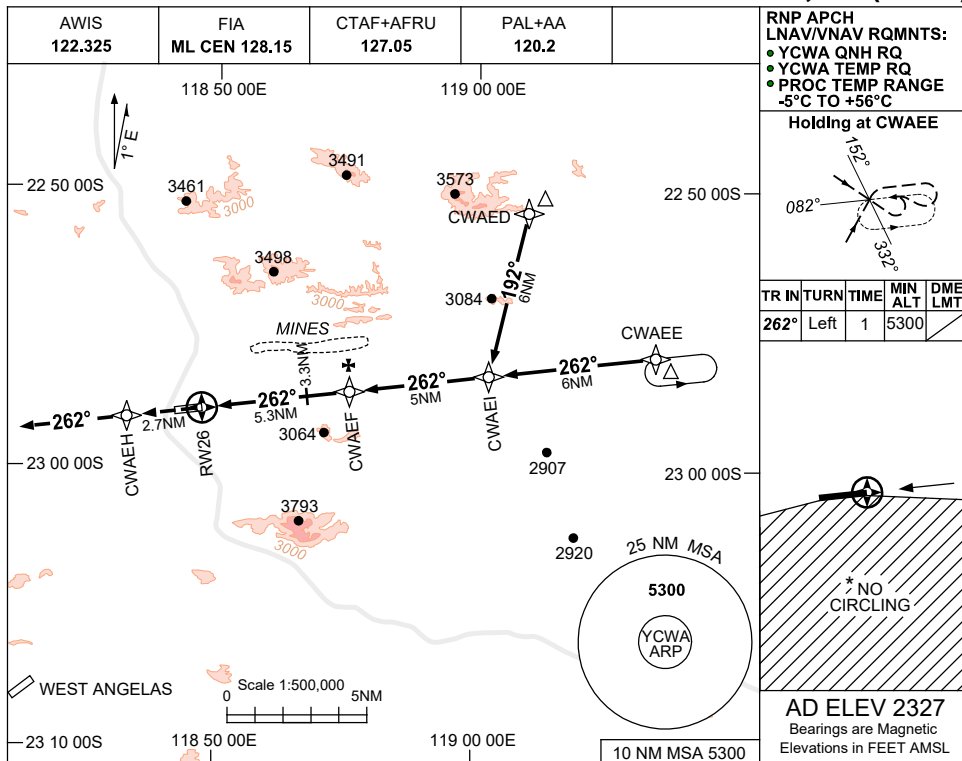
CWAGN01-177

USE QNH

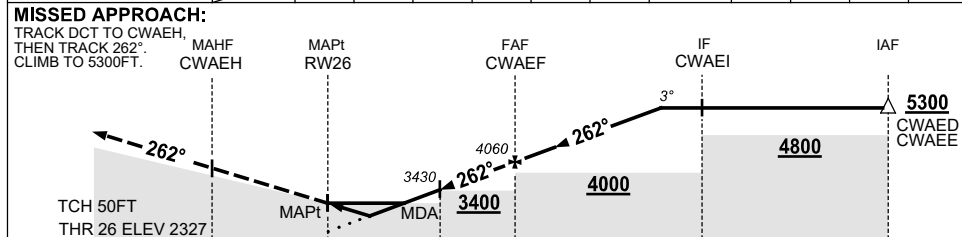
RNP RWY 26

30 NOV 2023

COONDEWANNA, WA (YCWA)



NM TO NEXT WPT	RW26	1.5	2.5	3	3.3	4	5	CWAEF	1	2	3	4
ALT (3° APCH PATH)		2840	3170	3330	3430	3650	3970	4060	4370	4690	5010	5300



NOTES

- MAX IAS:
INITIAL : 230KT.
- * NO CIRCLING S OF RWY 08/26.

CATEGORY	A	B	C	D
LNAV/VNAV		2840 (513-2.9)		
LNAV		3170 (843-4.8)		
CIRCLING *	3340 (1013-2.4)		3700 (1373-4.0)	4160 (1833-5.0)
ALTERNATE	(1513-4.4)		(1873-6.0)	(2333-7.0)

- BLASTING OPS (SEE ERSA)
- APCH PATH ANGLE DOES NOT COINCIDE WITH PAPI ON GLIDE SLOPE INDICATION.
- COLOUR: SEE SPEC NOTICES.

Changes: CHART TITLE, PBN SPECIFICATION BOX, Editorial.

CWAGN02-177