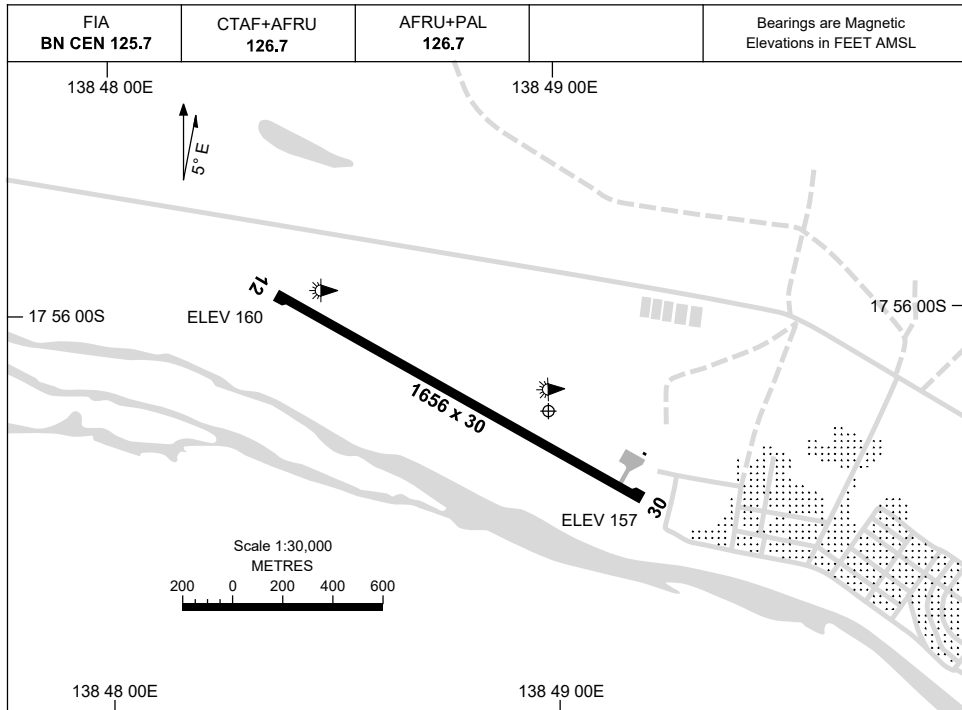


5 NOV 2020

AD ELEV 160  
17 56 13S 138 48 59E

AERODROME CHART  
**DOOMADGEE, QLD (YDMG)**



	<b>AERODROME LIGHTING</b>
<b>RWY</b>	TAXIWAY : BLUE EDGE RL : AFRU+PAL 126.7 (SDBY - 1HR PN MAN ACTIVATED)
<b>12</b> <sup>115</sup> <sup>295</sup> <b>30</b>	LIRL LIRL

**NOTES**

1. FIA FREQ 125.7 AVBL ABV 3000FT.

Changes: ARP PSN, WDI, SDBY POWER.

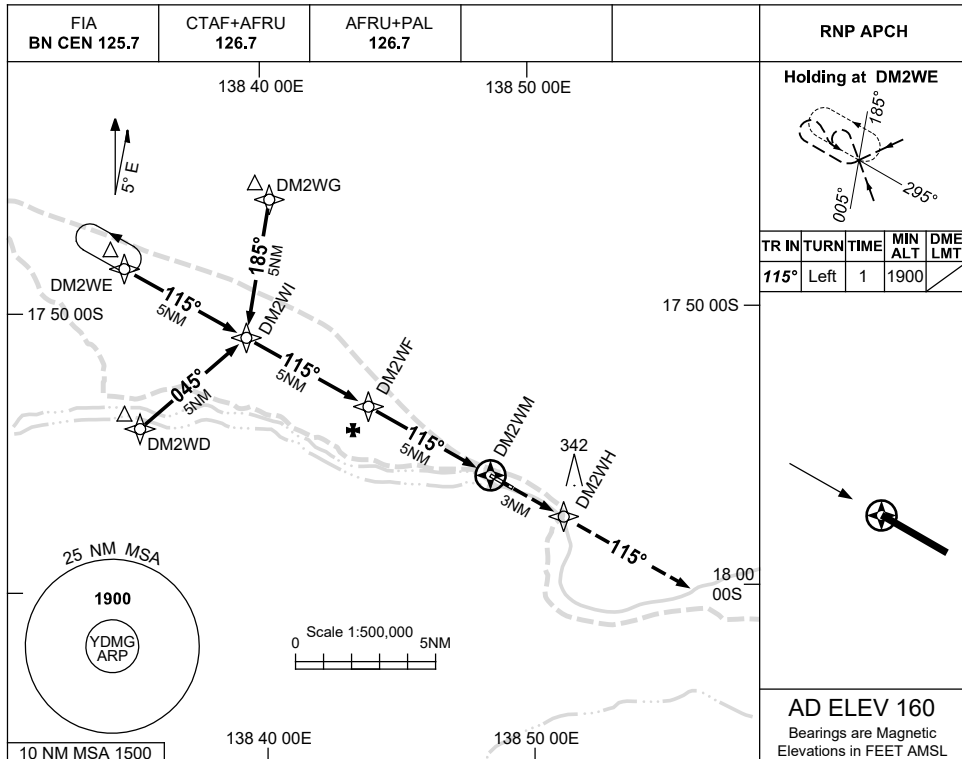
DMGAD01-165

USE QNH

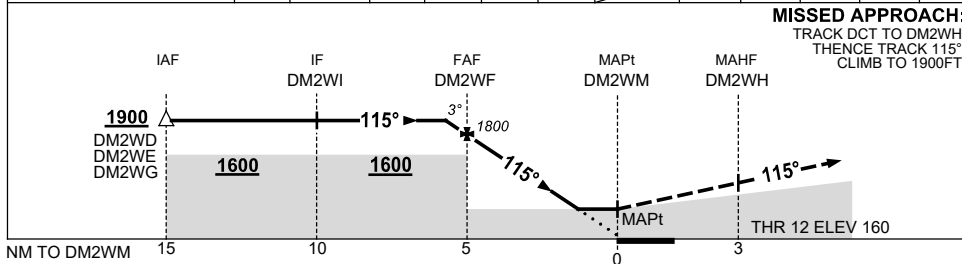
RNP RWY 12

DOOMADGEE, QLD (YDMG)

7 SEP 2023



NM TO NEXT WPT	0.3	DM2WF	4	3	2	1.5	DM2WM				
ALT (3° APCH PATH)	1900	1800	1480	1170	850	680					



**MISSED APPROACH:**  
TRACK DCT TO DM2WH,  
THENCE TRACK 115°.  
CLIMB TO 1900FT.

**NOTES**

- 1. MAX IAS: INITIAL : 210KT.

CATEGORY	A	B	C	D
LNAV	680 (520-2.9)			NOT APPLICABLE
CIRCLING	760 (600-2.4)	850 (690-4.0)		
ALTERNATE	(1100-4.4)		(1190-6.0)	

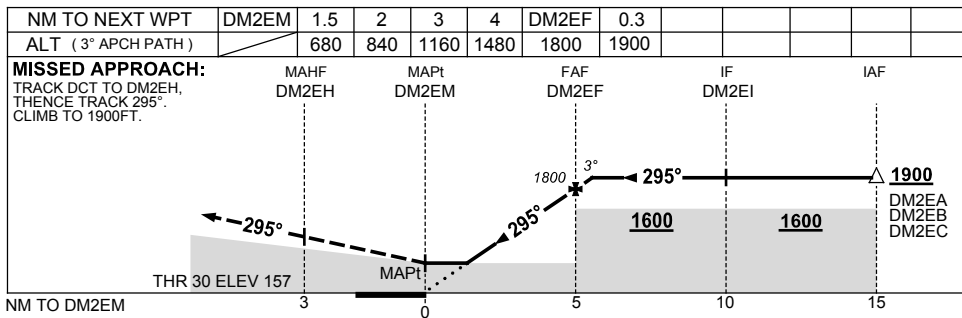
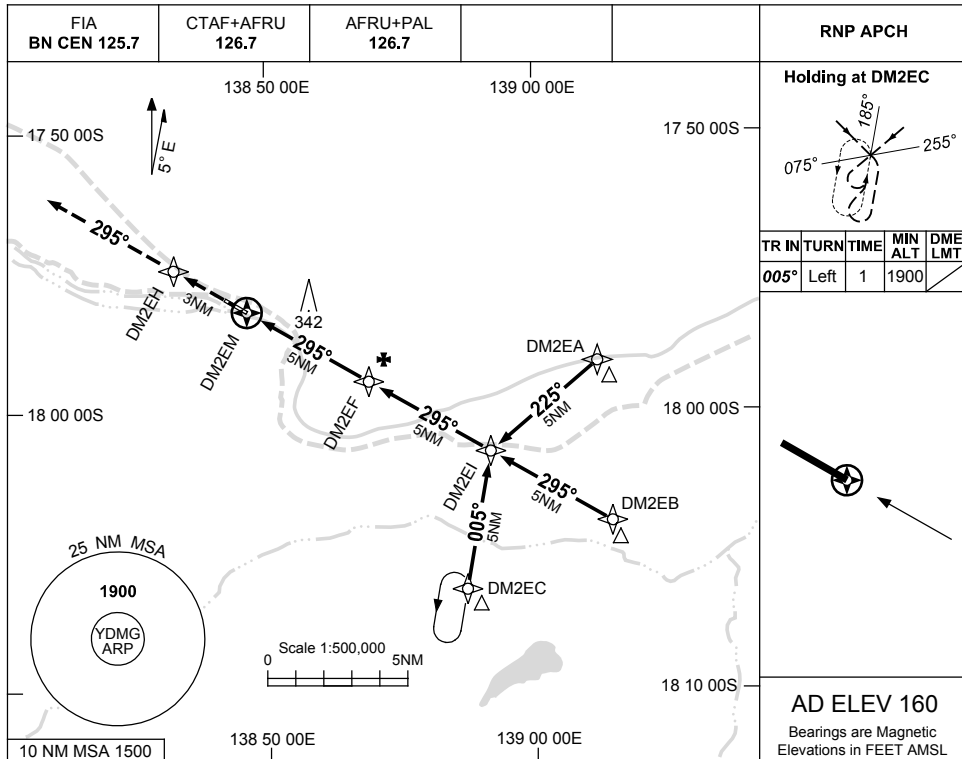
Changes: WPT NAMES.

DMGGN01-176

USE QNH

RNP RWY 30  
DOOMADGEE, QLD (YDMG)

7 SEP 2023



**NOTES**

- 1. MAX IAS: INITIAL : 210KT.

CATEGORY	A	B	C	D
LNAV	680 (520-2.9)			NOT APPLICABLE
CIRCLING	760 (600-2.4)	850 (690-4.0)		
ALTERNATE	(1100-4.4)		(1190-6.0)	

Changes: WPT NAMES, HOLDING.

DMGGN02-176