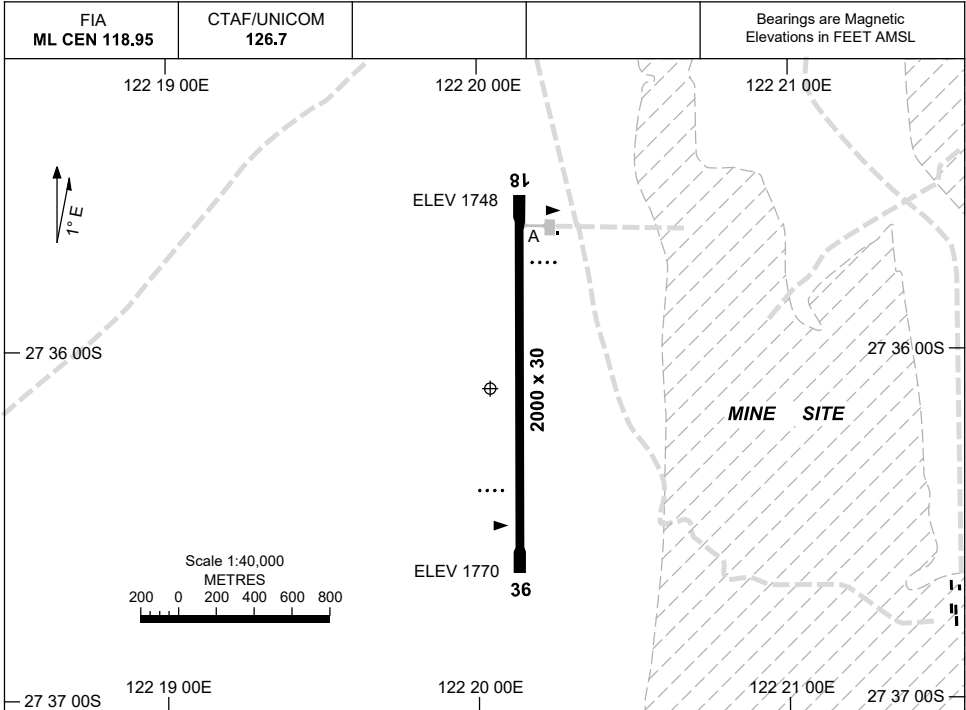


15 JUN 2023

AD ELEV 1770
27 36 07S 122 20 02E

AERODROME CHART
DUKETON GOLD, WA (YDKG)



	AERODROME LIGHTING
RWY	RL : PTBL IN EMERG (60 MIN PN MILL CONTROL: 08 8151 3665)
18 <small>179</small>	PAPI 3.0° 48.5FT PTBL
<small>359</small> 36	PAPI 3.0° 48.5FT PTBL

NOTES

1. PAPI - MANUAL ACTIVATION. 60 MIN PN (MIL CONTROL 08 8151 3665).

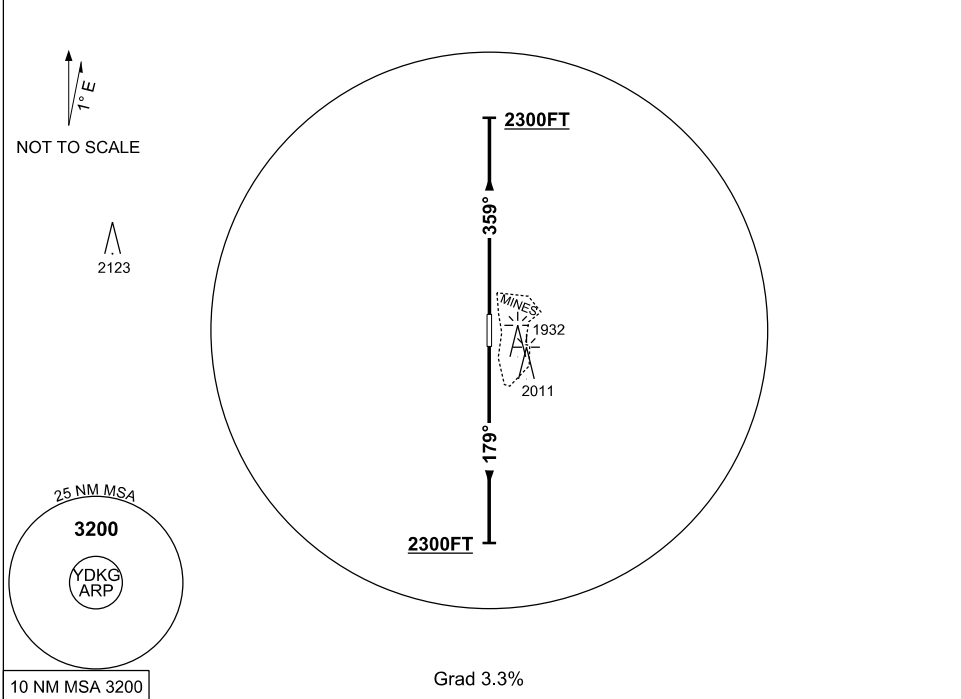
Changes: Editorial.

DKGAD01-175

**STANDARD INSTRUMENT DEPARTURE (SID)
DUKETON GOLD ONE DEPARTURE
DUKETON GOLD, WA (YDKG)**

1 DEC 2022

FIA ML CEN 118.95	CTAF/UNICOM 126.7				Bearings are Magnetic Elevations in FEET AMSL
-----------------------------	-----------------------------	--	--	--	--



<p>DUKETON GOLD ONE DEPARTURE</p> <p>RWY 18</p> <ul style="list-style-type: none"> • Track 179° • At or above 2300FT turn as required • Intercept flight plan route 	<p>RWY 36</p> <ul style="list-style-type: none"> • Track 359° • At or above 2300FT turn as required • Intercept flight plan route
--	---

NOTES

- NIL -

Changes: 1932FT OBST.

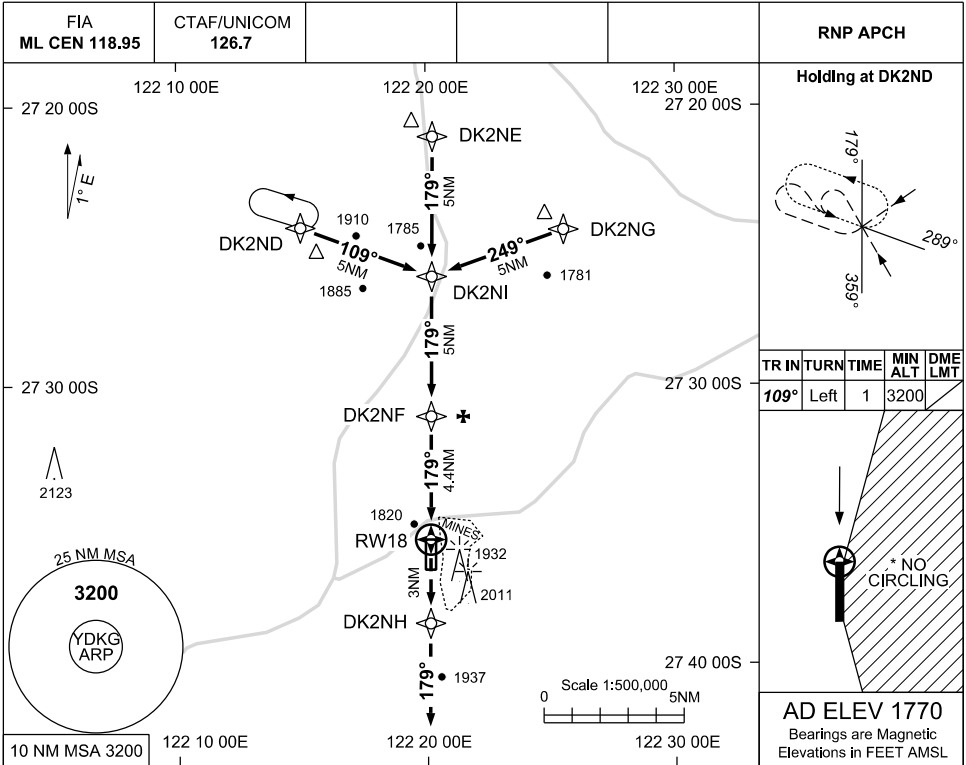
DKGDP01-173

USE QNH

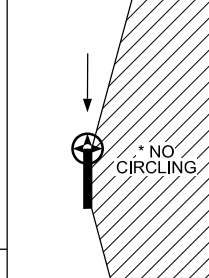
RNP RWY 18

DUKETON GOLD, WA (YDKG)

30 NOV 2023

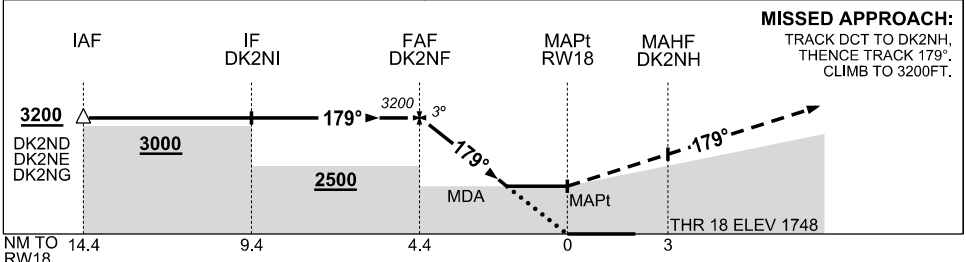


TR IN	TURN	TIME	MIN ALT	DME LMT
109°	Left	1	3200	



AD ELEV 1770
Bearings are Magnetic
Elevations in FEET AMSL

NM TO NEXT WPT	DK2NF	4	3	2	1.6	RW18								
ALT (3° APCH PATH)	3200	3070	2750	2430	2300									



NOTES

- MAX IAS: INITIAL 210KT
- CAUTION:** CHECK BLASTING TIMES WITH A/D OPERATOR
- *3. NO CIRCLING EAST OF RWY 18/36

CATEGORY	A	B	C	D
LNAV	2300 (552 - 3.1)			NOT AUTHORISED
CIRCLING*	2420 (650 - 2.4)		2540 (770 - 4.0)	
ALTERNATE	(1150 - 4.4)		(1270 - 6.0)	

Changes: CHART TITLE, PBN SPECIFICATION BOX

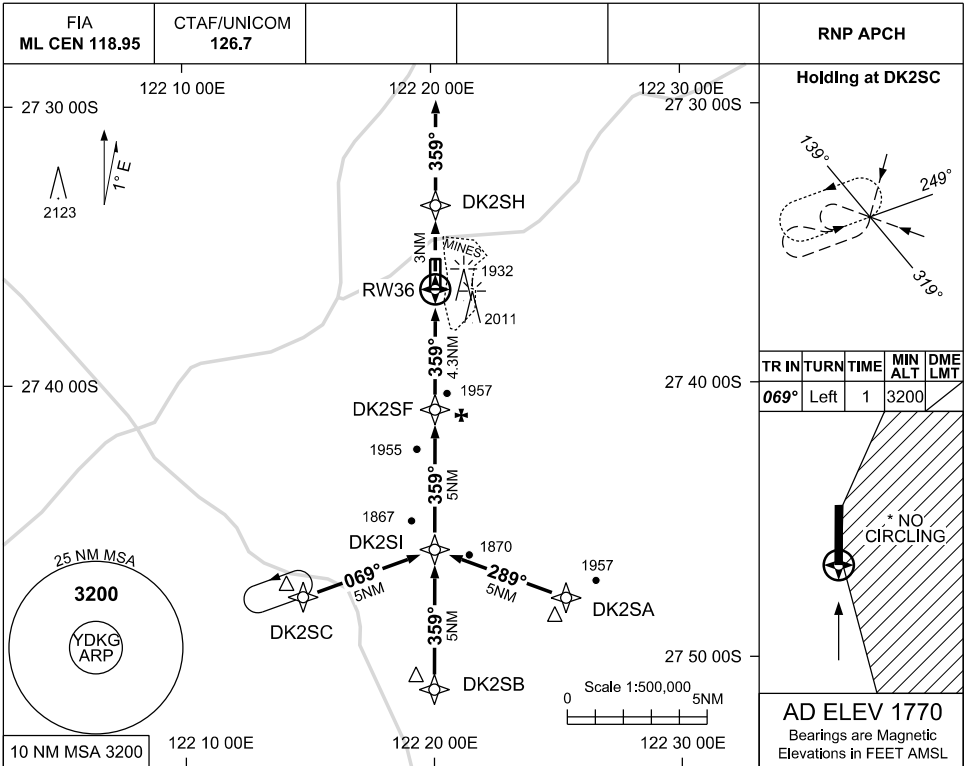
DKGGN01-177

USE QNH

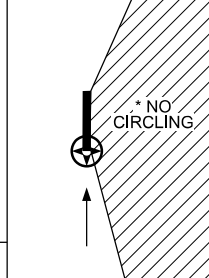
RNP RWY 36

DUKETON GOLD, WA (YDKG)

30 NOV 2023

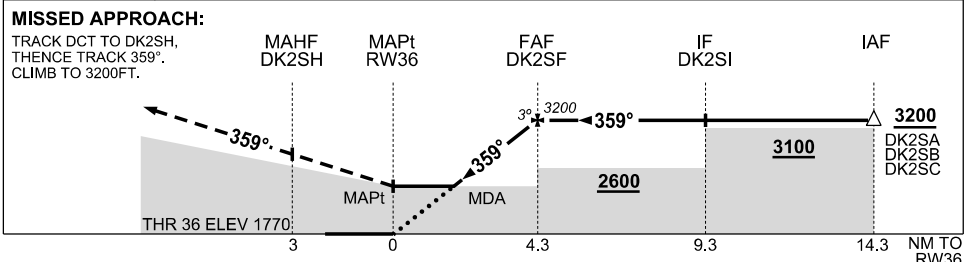


TR IN	TURN	TIME	MIN ALT	DME LMT
069°	Left	1	3200	



AD ELEV 1770
Bearings are Magnetic
Elevations in FEET AMSL

NM TO NEXT WPT	RW36	1.8	2	3	4	DK2SF								
ALT (3° APCH PATH)		2390	2460	2780	3090	3200								



NOTES

- MAX IAS:
INITIAL 210KT
- CAUTION:** CHECK
BLASTING TIMES
WITH A/D OPERATOR
- *3. NO CIRCLING EAST
OF RWY 18/36

CATEGORY	A	B	C	D
LNAV	2390 (620 - 3.5)			NOT AUTHORISED
CIRCLING*	2420 (650 - 2.4)	2540 (770 - 4.0)		
ALTERNATE	(1150 - 4.4)		(1270 - 6.0)	

Changes: CHART TITLE, PBN SPECIFICATION BOX

DKGGN02-177