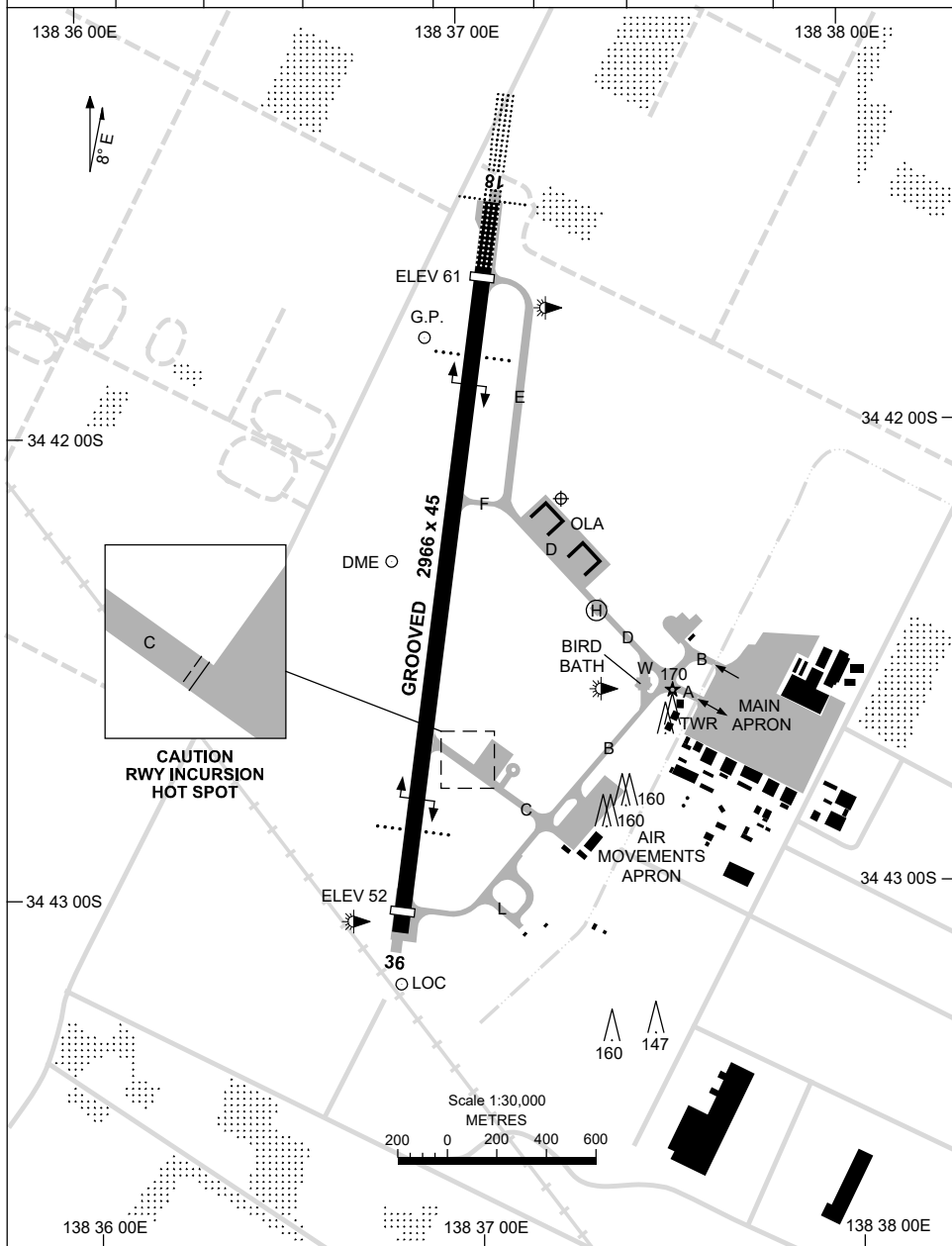


8 SEP 2022

AD ELEV 67
34 42 09S 138 37 15E

AERODROME CHART - Page 1
EDINBURGH, SA (YPED)

ATIS 126.25 316.3	SMC/ACD 134.1	TWR 118.3 257.8	FIA AD CEN 130.45	APP 128.6 306.3	AWIS (AH) 316.3	CTAF+AFRU (AH) 118.3 257.8	Bearings are Magnetic Elevations in FEET AMSL
----------------------	------------------	--------------------	----------------------	--------------------	--------------------	-------------------------------	--



Changes: HOT SPOT, Editorial.

PEDAD01-172

8 SEP 2022

AD ELEV 67
34 42 09S 138 37 15E

AERODROME CHART - Page 2
EDINBURGH, SA (YPED)

ATIS 126.25 316.3	SMC/ACD 134.1	TWR 118.3 257.8	FIA AD CEN 130.45	APP 128.6 306.3	AWIS (AH) 316.3	CTAF+AFRU (AH) 118.3 257.8	Bearings are Magnetic Elevations in FEET AMSL
----------------------	------------------	--------------------	----------------------	--------------------	--------------------	-------------------------------	--

--	--	--	--	--	--	--	--

RWY	AERODROME LIGHTING						
	ABN TAXIWAY	: ALTN W/G 8 SEC : ON REQUEST, GREEN CENTRELINE. CL LGT (GREEN) BTN NORTHERN INTERSECTION TWY B AND RUN UP BAY NOT AVBL. BLUE TWY EDGE LGT AVBL.					
	RL	: MAN , PTBL (60 MIN PN) , SDBY (5 SEC)					
18 ¹⁸¹	PAPI 3.0° 51FT HIRL HIAL - CAT I SFL						
⁰⁰¹ 36	PAPI 3.0° 49FT HIRL						

NOTES							
--------------	--	--	--	--	--	--	--

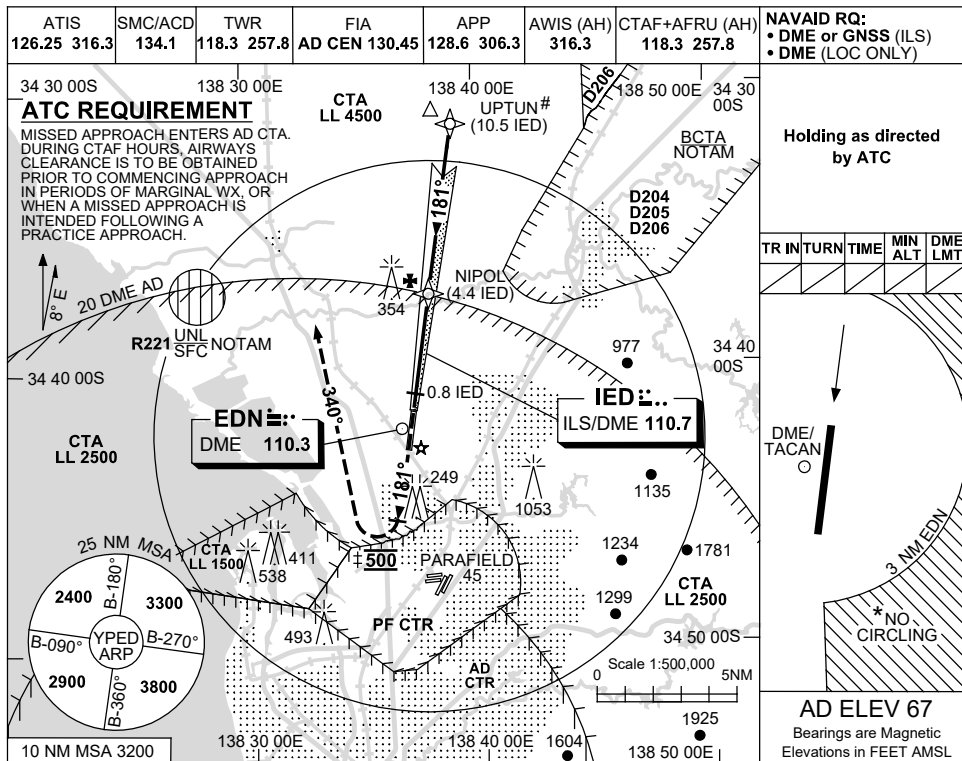
Changes: NOTES.

PEDAD02-172

USE QNH

ILS-Z or LOC-Z RWY 18
EDINBURGH, SA (YPED)

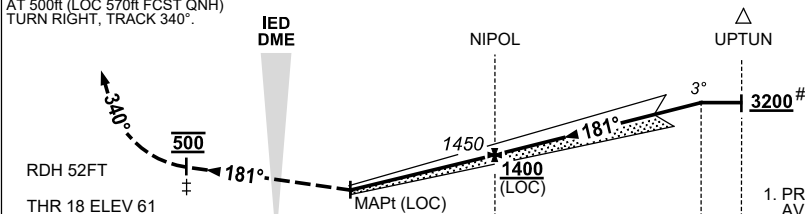
21 MAR 2024



NM TO IED DME	1.6	2	3	4	NIPOL	5	6	7	8	9	9.9		
ALT (3° APCH PATH)	570	690	1010	1330	1450	1650	1970	2280	2600	2920	3200		

MISSED APPROACH:

TRACK 181°, CLIMB TO 3200ft.
AT 500ft (LOC 570ft FCST QNH)
TURN RIGHT, TRACK 340°.



NM TO IED DME	0	0.8	4.4	9.9	10.5
NM TO THR 18	0	0.6	4.2	9.8	10.4

NOTES

- PROCEDURE NOT AVBL WHEN R221 ACT UNLESS AUTHORISED BY ATC.
- MAX IAS:
INITIAL : 210KT.
MISSED APPROACH : 180KT.
TURN : 180KT.
- NO CIRCLING E OF RWY 18/36 BEYOND 3NM EDN.
- ACFT MAY BE RADAR VECTORED TO IAF (UPTUN) AT 3200ft.

CATEGORY	A	B	C	D
S-I ILS		380 (319)	1.0	
S-I LOC #		570 (503-2.1)		
CIRCLING *	800 (733-2.4)		850 (783-4.0)	890 (823-5.0)
ALTERNATE	(1233-4.4)		(1283-6.0)	(1323-7.0)

±5. 570ft (LOC FCST QNH).

Changes: VISIBILITY, Editorial.

PEDI101-178