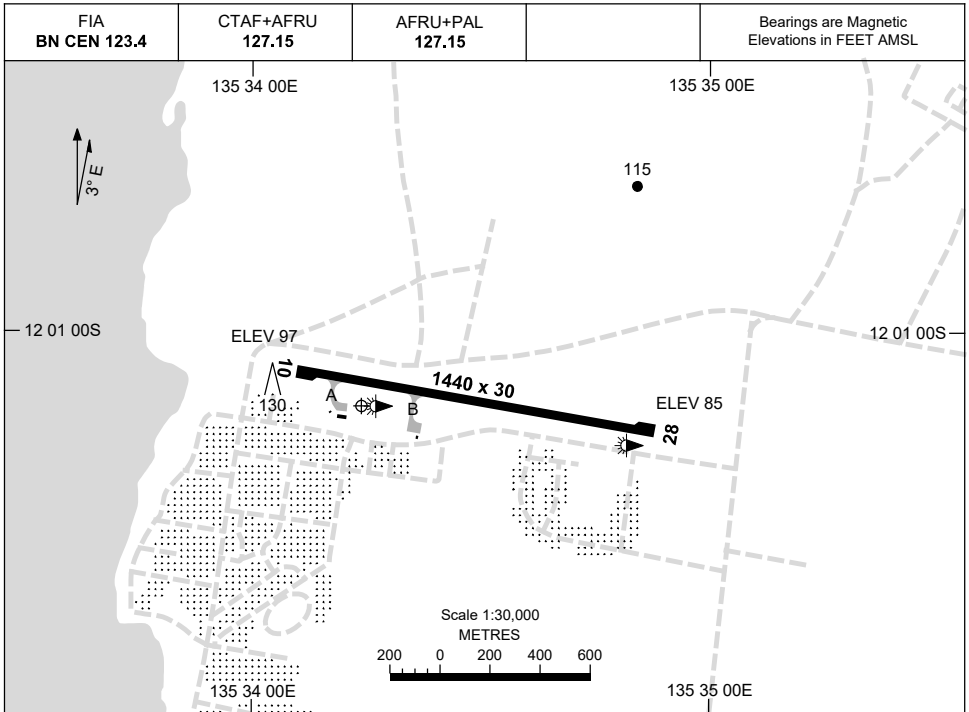


16 JUN 2022

AD ELEV 101
12 01 10S 135 34 14E

AERODROME CHART
ELCHO ISLAND, NT (YELD)



	AERODROME LIGHTING
RWY	RL : AFRU+PAL 127.15
10 <small>097</small>	LIRL
<small>277</small> 28	LIRL

NOTES

1. FIA FREQ 123.4 AVBL IN CIRCUIT AREA.

Changes: MAG VAR, RWY BRG, THR ELEV.

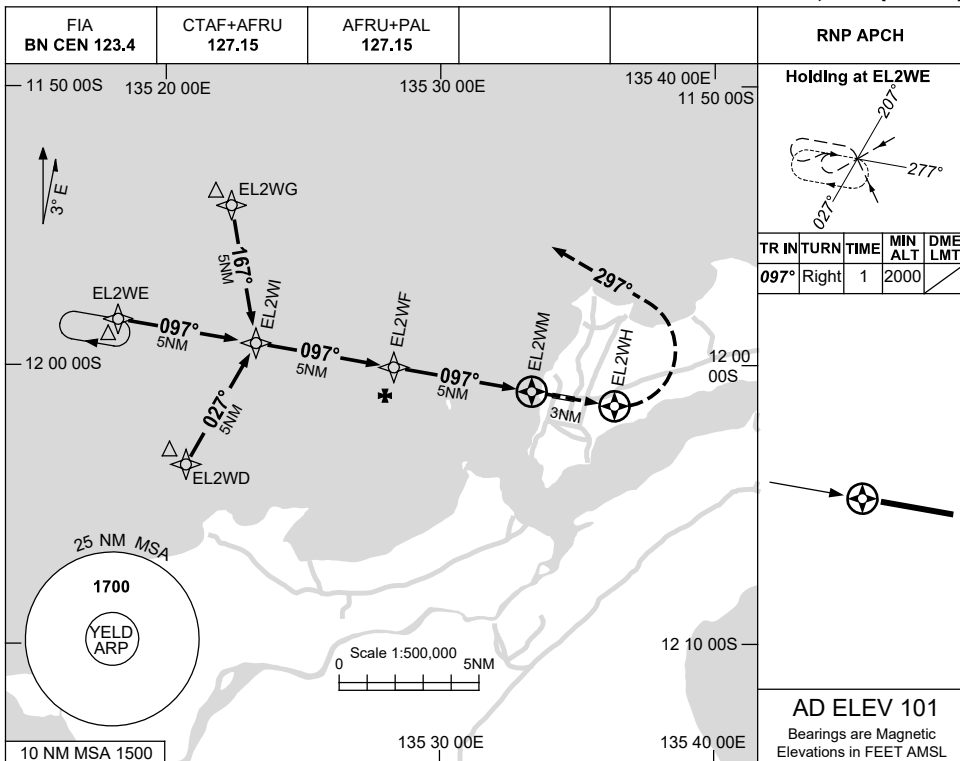
ELDAD01-171

USE QNH

RNP RWY 10

ELCHO ISLAND, NT (YELD)

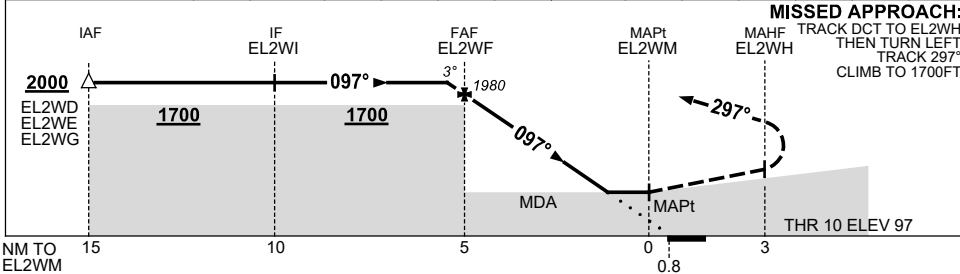
8 SEP 2022



TR IN	TURN	TIME	MIN ALT	DME LMT
097°	Right	1	2000	

AD ELEV 101
Bearings are Magnetic
Elevations in FEET AMSL

NM TO NEXT WPT	0.1	EL2WF	4	3	2	1	EL2WM						
ALT (3° APCH PATH)	2000	1980	1660	1340	1020	710							



NOTES

CATEGORY	A	B	C	D
LNAV	710 (609-3.5)			NOT APPLICABLE
CIRCLING	710 (609-2.4)	800 (699-4.0)		
ALTERNATE	(1109-4.4)		(1199-6.0)	

1. MAX IAS:
INITIAL : 210KT.

Changes: CHART TITLE, PBN SPECIFICATION BOX.

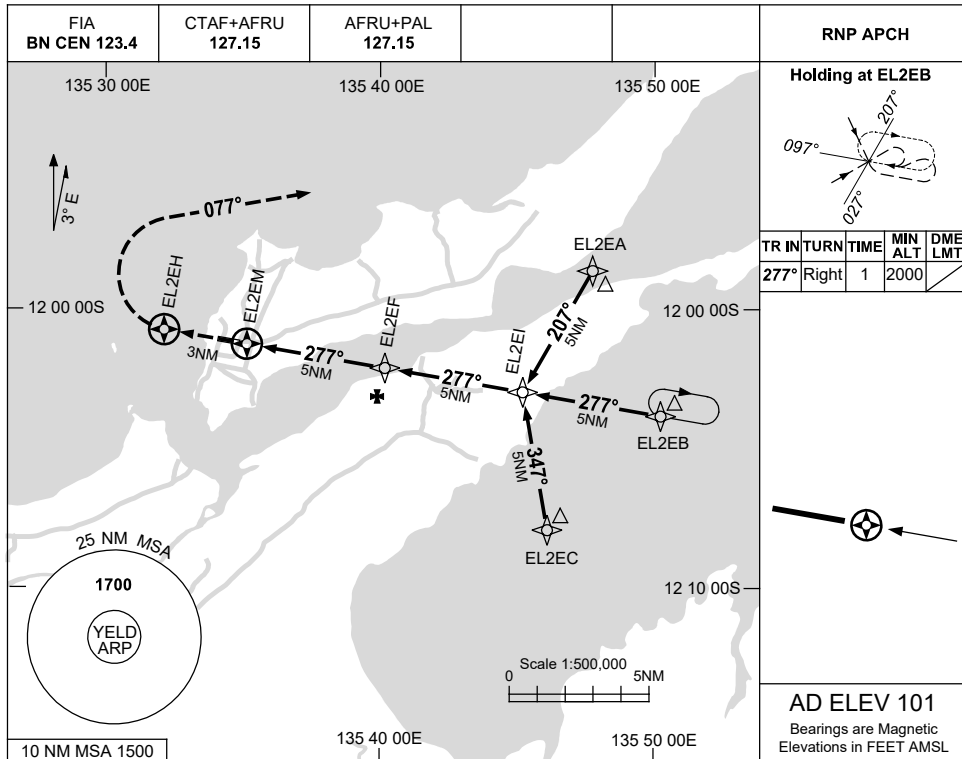
ELDGN01-172

USE QNH

RNP RWY 28

8 SEP 2022

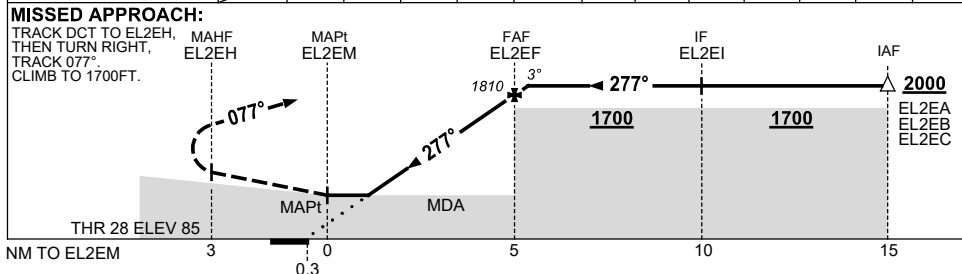
ELCHO ISLAND, NT (YELD)



TR	INT	TIME	MIN ALT	DME LMT
277°	Right	1	2000	

AD ELEV 101
Bearings are Magnetic
Elevations in FEET AMSL

NM TO NEXT WPT	EL2EM	1.5	2	3	4	EL2EF	0.6				
ALT (3° APCH PATH)		710	860	1180	1490	1810	2000				



NOTES

1. MAX IAS: INITIAL : 210KT.

CATEGORY	A	B	C	D
LNAV	710 (625-3.6)			NOT APPLICABLE
CIRCLING	710 (609-2.4)	800 (699-4.0)		
ALTERNATE	(1109-4.4)		(1199-6.0)	

Changes: CHART TITLE, PBN SPECIFICATION BOX.

ELDGN02-172