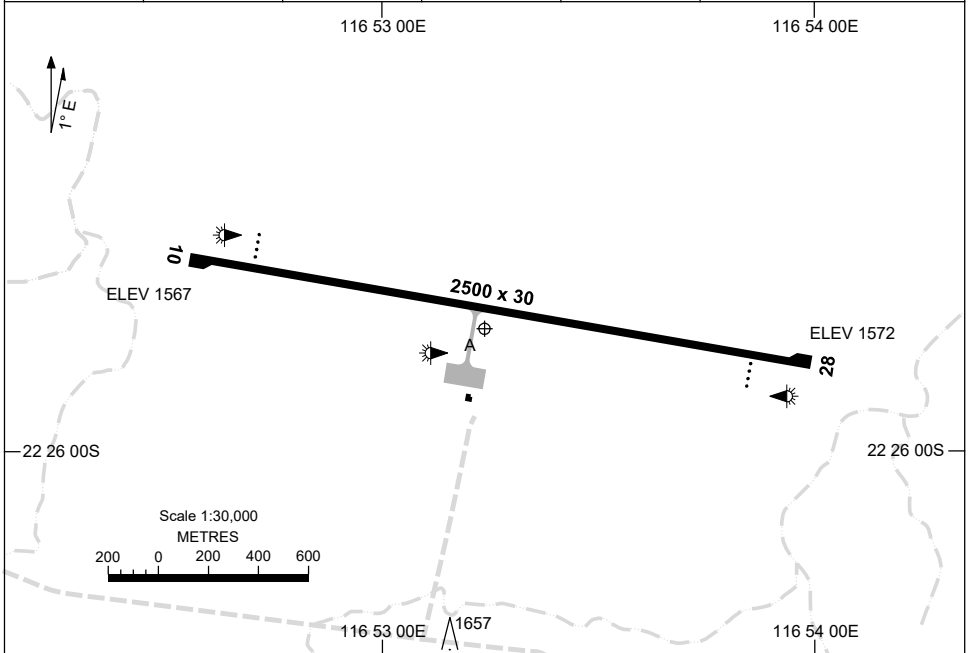


15 JUN 2023

AD ELEV 1576
22 25 44S 116 53 14E

AERODROME CHART
ELIWANA, WA (Yewa)

AWIS 122.275	FIA ML CEN 125.7	CTAF+AFRU 126.7	PAL+AA 119.6	UNICOM 126.7	Bearings are Magnetic Elevations in FEET AMSL
-----------------	---------------------	--------------------	-----------------	-----------------	--



	AERODROME LIGHTING	
RWY	TAXIWAY : BLUE EDGE RL : PAL+AA 119.6 , SDBY (10 SEC)	
10 <small>099</small>	PAPI 3.0° 53FT LIRL	
<small>279</small> 28	PAPI 3.0° 53FT LIRL	

NOTES

1. AWIS REQUIRES THREE ONE-SECOND PULSE TO ACTIVATE.
2. AFRU UNIT AT YBGD. NOT HEARD ON GROUND YEWA.

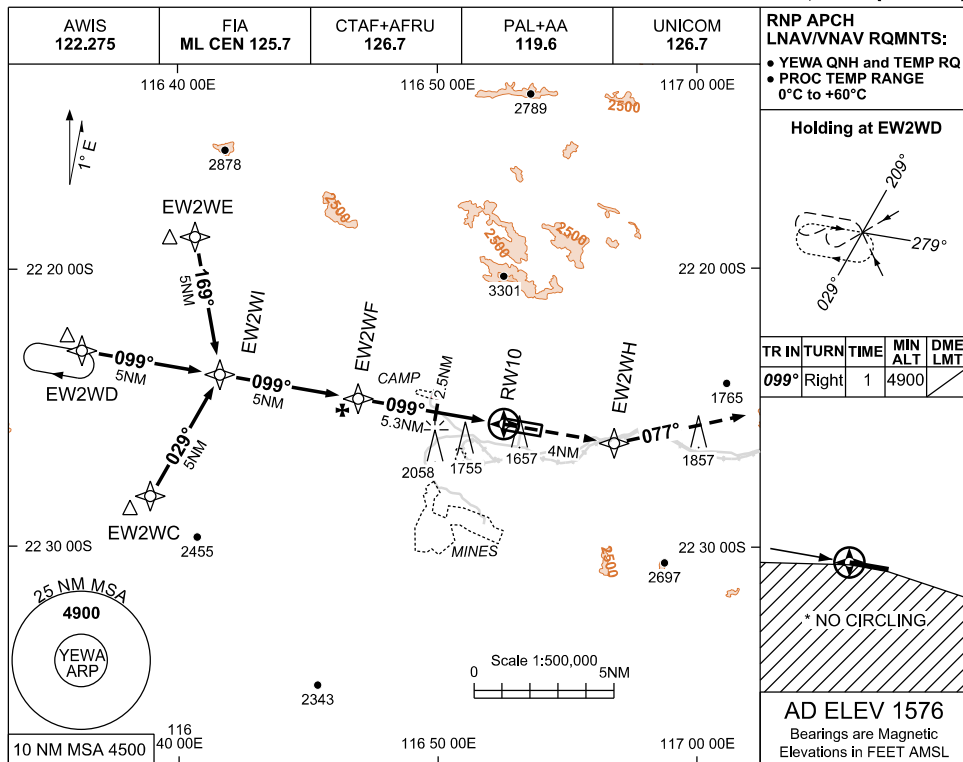
Changes: NOTES.

EWAAD01-175

USE QNH

RNP RWY 10
ELIWANA, WA (YEWA)

30 NOV 2023



RNP APCH LNAV/VNAV RQMNTS:

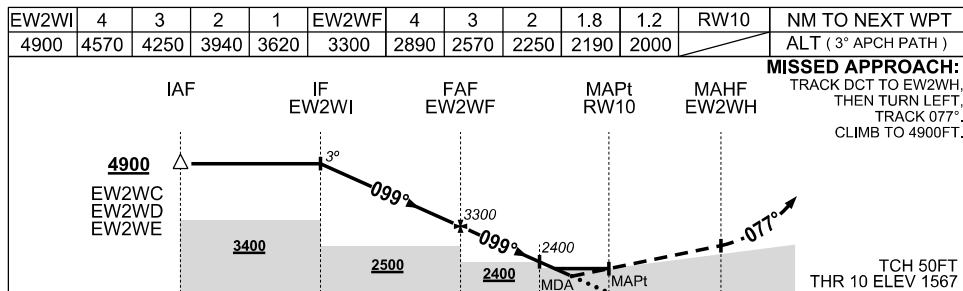
- YEWA QNH and TEMP RQ
- PROC TEMP RANGE 0°C to +60°C

Holding at EW2WD

TR IN	TURN	TIME	MIN ALT	DME LMT
099°	Right	1	4900	

AD ELEV 1576
Bearings are Magnetic Elevations in FEET AMSL

* NO CIRCLING



- NOTES**
1. MAX IAS : INITIAL: 210KT
 - *2. NO CIRCLING S OF RWY 10/28
 3. COLOUR: SEE SPEC NOTICES
 4. CAUTION: YBGD PROCS ADJACENT TO S

CATEGORY	A	B	C	D
LNAV/VNAV	2000 (432-2.4)			
LNAV	2190 (622-3.5)			
*CIRCLING	2440 (864-2.4)	2680 (1104-4.0)	NOT AUTHORISED	
ALTERNATE	(1364-4.4)	(1604-6.0)	NOT APPLICABLE	

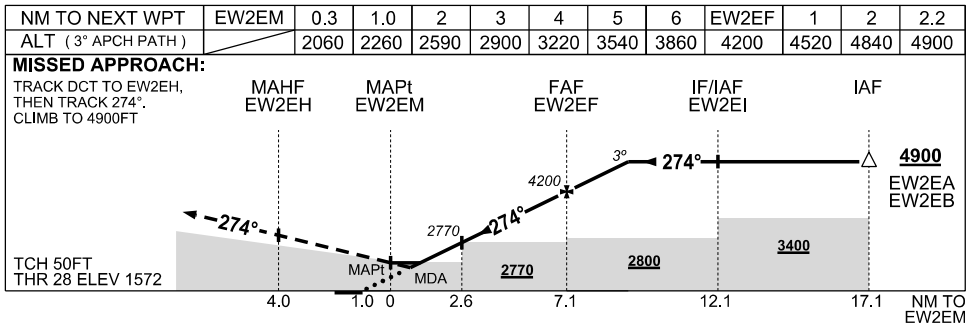
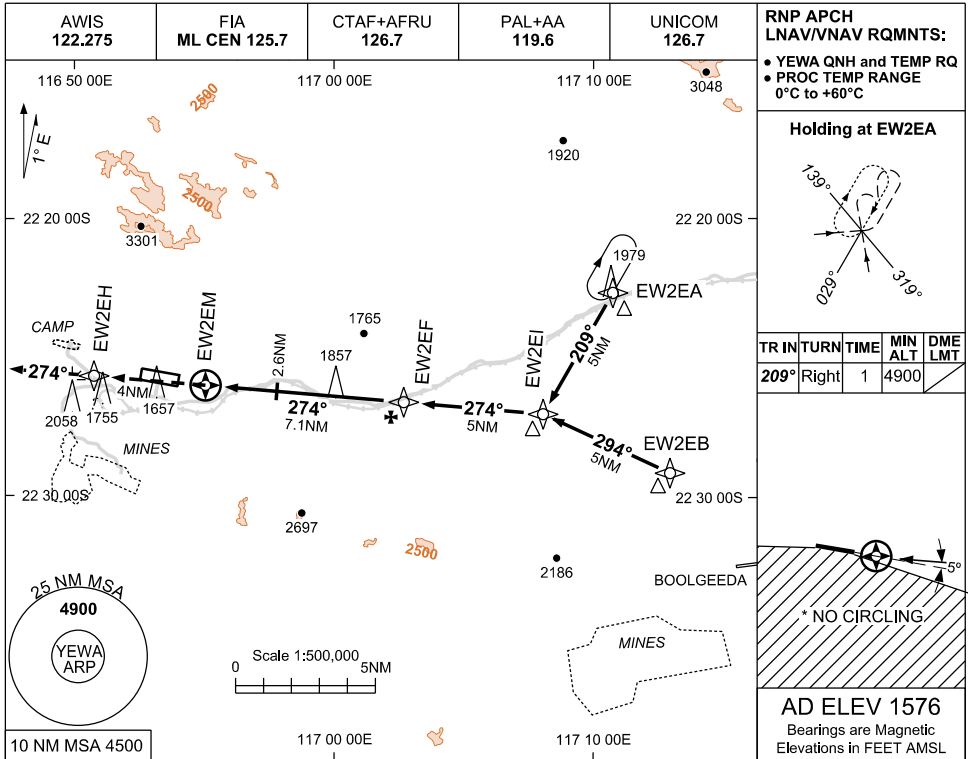
Changes: CHART TITLE, WPT IDENT, EDITORIAL.

EWAGN01-177

USE QNH

RNP RWY 28
ELIWANA, WA (YEWA)

30 NOV 2023



NOTES

1. MAX IAS : INITIAL: 210KT
2. NO CIRCLING S OF RWY 10/28
3. COLOUR: SEE SPEC NOTICES
4. CAUTION: YBGD PROC ADJACENT TO S

CATEGORY	A	B	C	D
LNAV/VNAV	2060 (488-2.8)			
LNAV	2260 (684-3.9)			
*CIRCLING	2440 (864-2.4)	2680(1104-4.0)	NOT AUTHORISED	
ALTERNATE	(1364-4.4)		(1604-6.0)	
			NOT APPLICABLE	

Changes: CHART TITLE, WPT IDENT, EDITORIAL.

EWAGN02-177