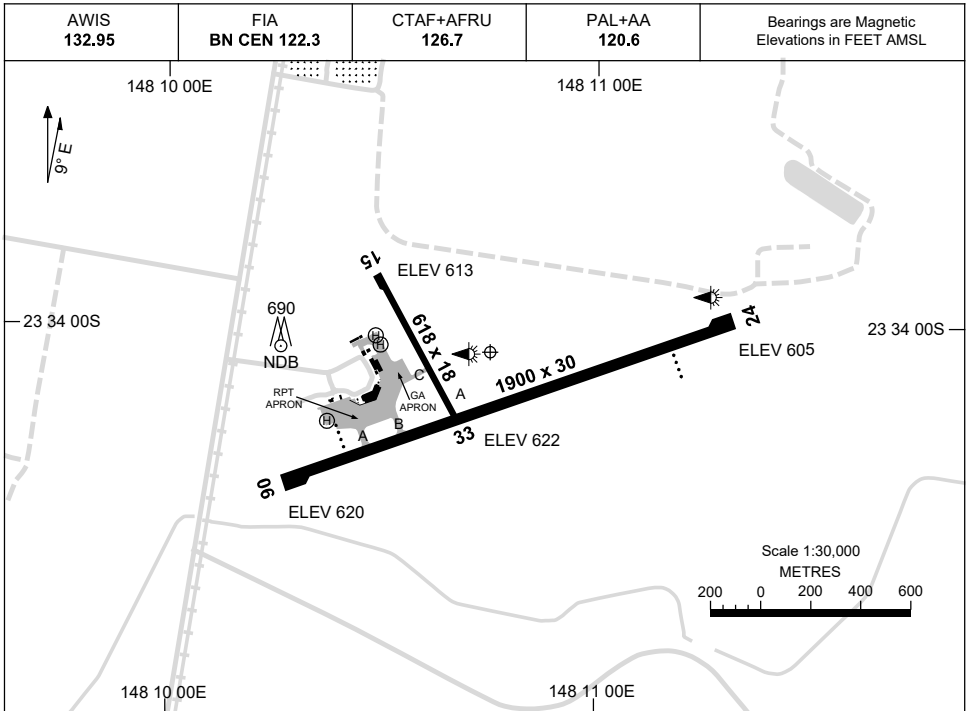


13 JUN 2024

AD ELEV 622
23 34 04S 148 10 45E

AERODROME CHART
EMERALD, QLD (YEML)



	AERODROME LIGHTING
RWY	RL : PAL+AA 120.6 , SDBY (30 SEC)
06 <small>062</small>	PAPI 3.0° 45FT LIRL
<small>242</small> 24	PAPI 3.0° 45FT LIRL
15 <small>143</small>	NIL
<small>323</small> 33	NIL

NOTES

1. AWIS ACTIVATED BY 1 SEC TRANSMIT PULSE.

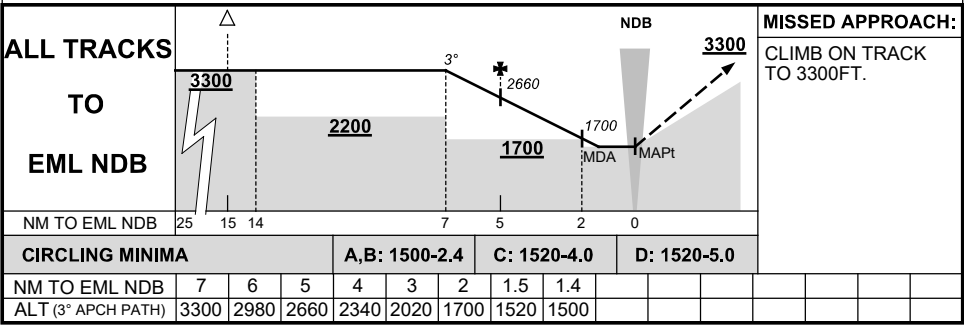
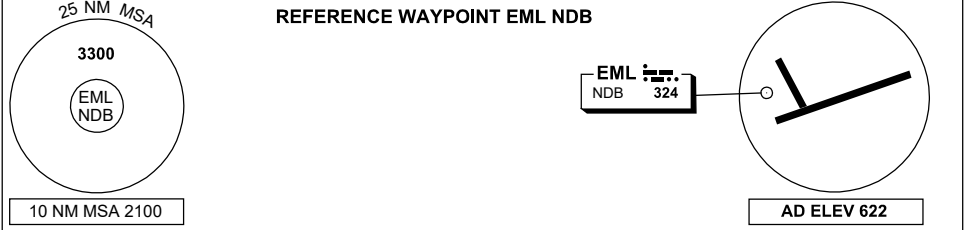
Changes: Editorial.

EMLAD01-179

**GNSS ARRIVAL PROCEDURES
EMERALD, QLD (YEML)**

16 JUN 2022

AWIS 132.95	FIA BN CEN 122.3	CTAF+AFRU 126.7	PAL+AA 120.6		Bearings are Magnetic Elevations in FEET AMSL
----------------	---------------------	--------------------	-----------------	--	--



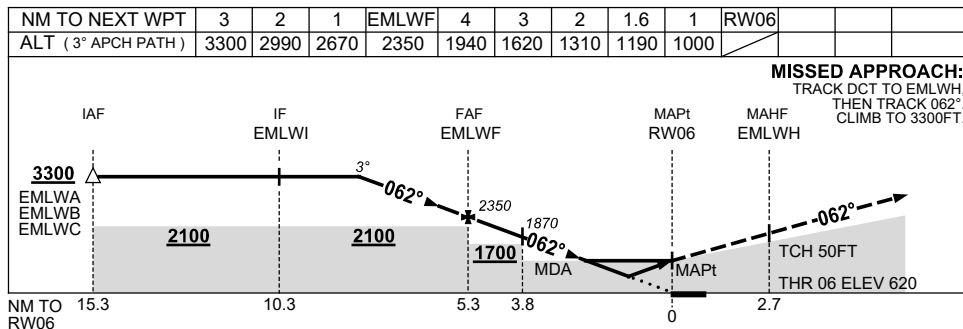
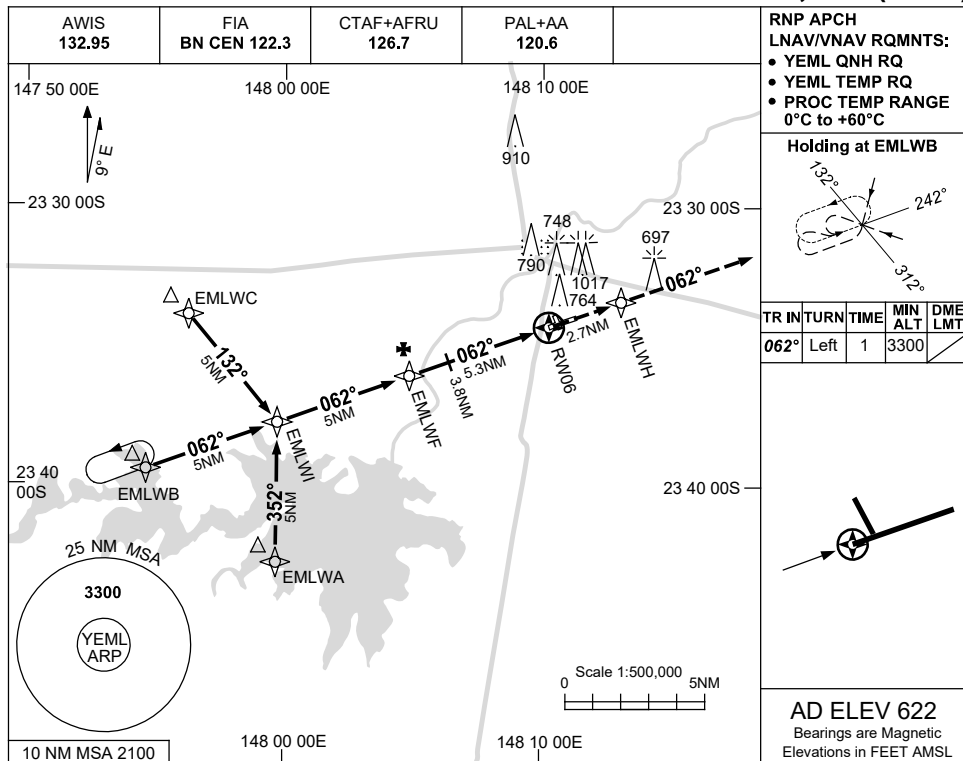
Changes: PAL+AA.

USE QNH

RNP RWY 06

16 JUN 2022

EMERALD, QLD (YEML)



NOTES

CATEGORY	A	B	C	D
LNAV/VNAV	1000 (380-2.1)			
LNAV	1190 (570-3.2)			
CIRCLING	1420 (798-2.4)	1520 (898-4.0)	1520 (898-5.0)	
ALTERNATE	(1298-4.4)	(1398-6.0)	(1398-7.0)	

- MAX IAS :
HOLDING : 210KT.
INITIAL : 210KT.

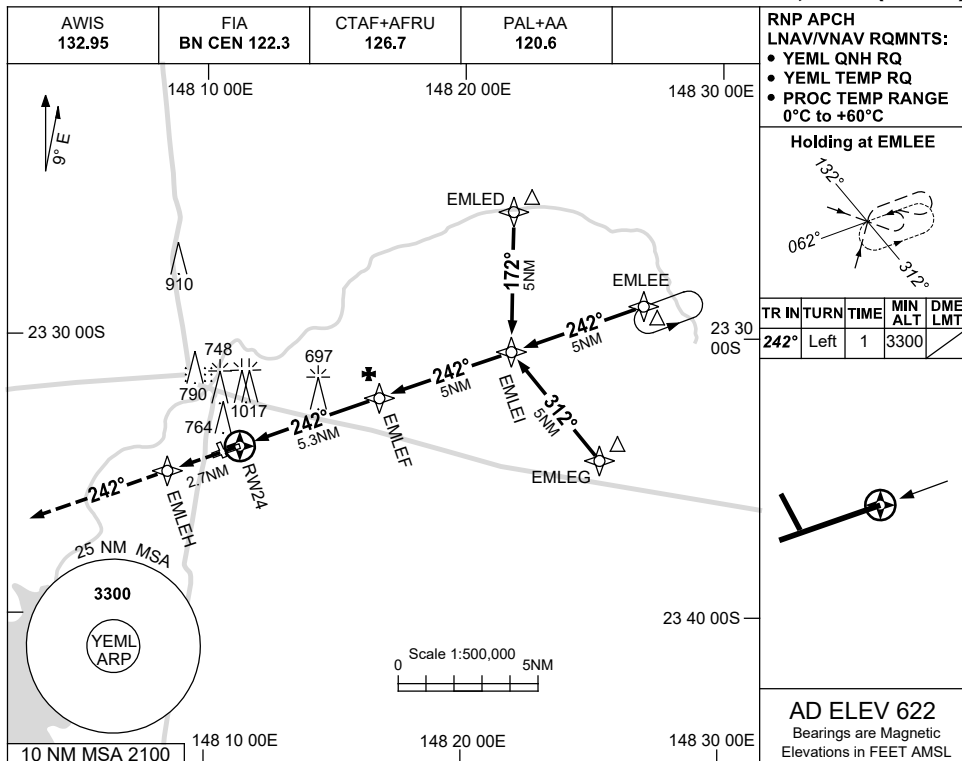
Changes: CHART TITLE, PBN SPECIFICATION BOX, PAL+AA.

EMLGN01-171

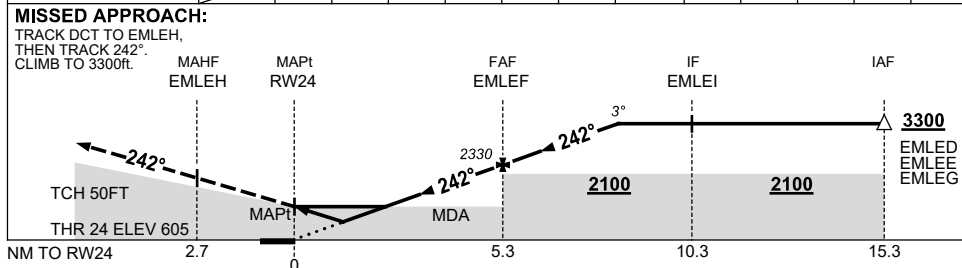
USE QNH

RNP RWY 24
EMERALD, QLD (YEML)

21 MAR 2024



NM TO NEXT WPT	RW24	0.9	1	1.5	2	3	4	EMLEF	1	2	3		
ALT (3° APCH PATH)		940	970	1120	1290	1610	1930	2330	2650	2970	3300		



NOTES

CATEGORY	A	B	C	D
LNAV/VNAV	940 (335-1.9)			
LNAV	1120 (515-2.9)			
CIRCLING	1420 (798-2.4)	1520 (898-4.0)	1520 (898-5.0)	
ALTERNATE	(1298-4.4)	(1398-6.0)	(1398-7.0)	

- MAX IAS :
HOLDING : 210KT.
INITIAL : 210KT.

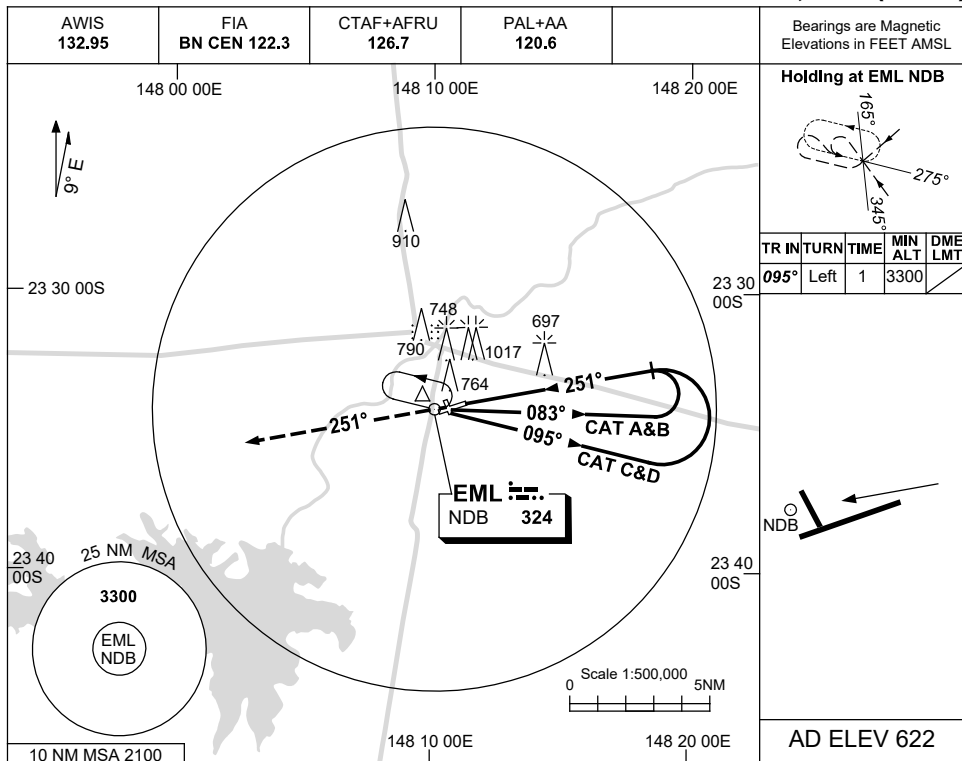
Changes: ALTERNATE VISIBILITY, Editorial.

EMLGN02-178

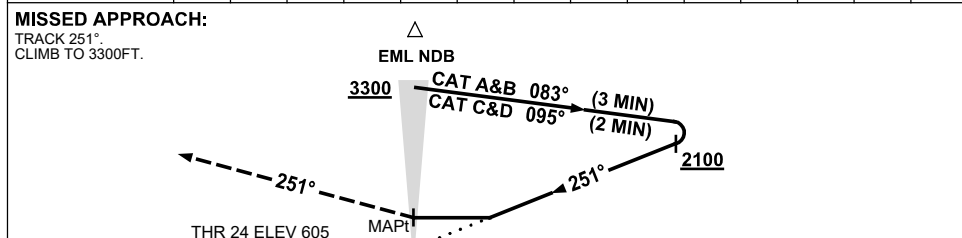
USE QNH

NDB RWY 24
EMERALD, QLD (YEML)

16 JUN 2022



DME DIST	NOT APPLICABLE									
ALT										



NOTES

CATEGORY	A	B	C	D
S-I NDB	1320 (715-4.1)			
CIRCLING	1420 (798-2.4)	1520 (898-4.0)		1520 (898-5.0)
ALTERNATE	(1298-4.4)	(1398-6.0)		(1398-7.0)

- MAX IAS:
 INITIAL :
 CAT C&D 210KT.

Changes: PAL+AA.

EMLNB01-171