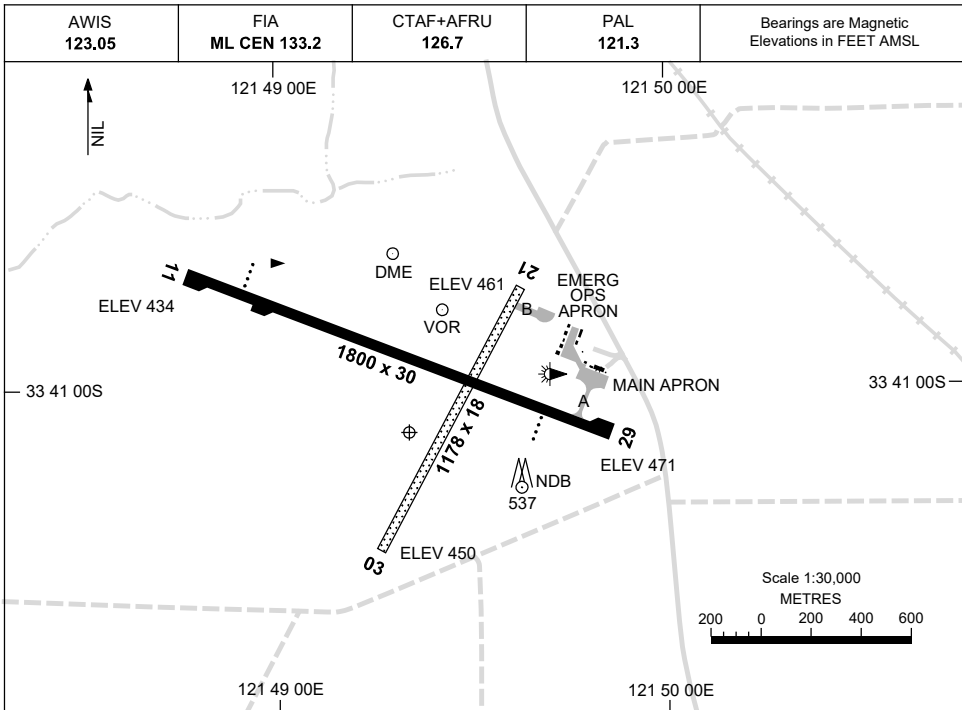


21 MAR 2024

AD ELEV 471
33 41 04S 121 49 22E

AERODROME CHART
ESPERANCE, WA (YESP)



	AERODROME LIGHTING
RWY	TAXIWAY : BLUE EDGE RL : PAL 121.3 , SDBY (10 SEC)
11 ¹¹⁰ 290 29	PAPI 3.0° 51FT LIRL PAPI 3.0° 45FT LIRL
03 ⁰²⁸ 208 21	NIL NIL

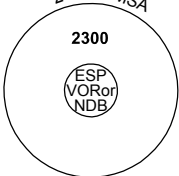
NOTES

DME or GNSS ARRIVAL PROCEDURES ESPERANCE, WA (YESP)

2 DEC 2021

AWIS 123.05	FIA ML CEN 133.2	CTAF+AFRU 126.7	PAL 121.3		Bearings are Magnetic Elevations in FEET AMSL
----------------	---------------------	--------------------	--------------	--	--

25 NM MSA

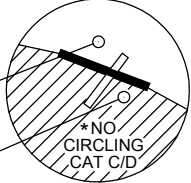


2300

ESP
VOR or
NDB

10 NM MSA 2000

**DME USING ESP DME
REFERENCE WAYPOINT ESP VOR**



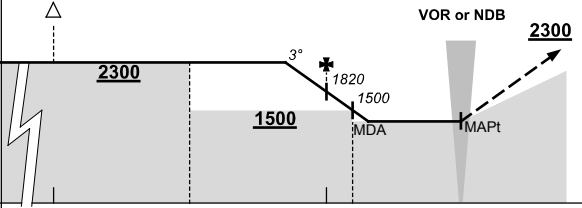
ESP VOR/DME 114.2

ESP NDB 326

*NO CIRCLING CAT C/D

AD ELEV 471

**ALL ROUTES
TO
ESP
VOR or NDB**



VOR or NDB

2300

3°

1820

1500

MDA

MAPt

2300

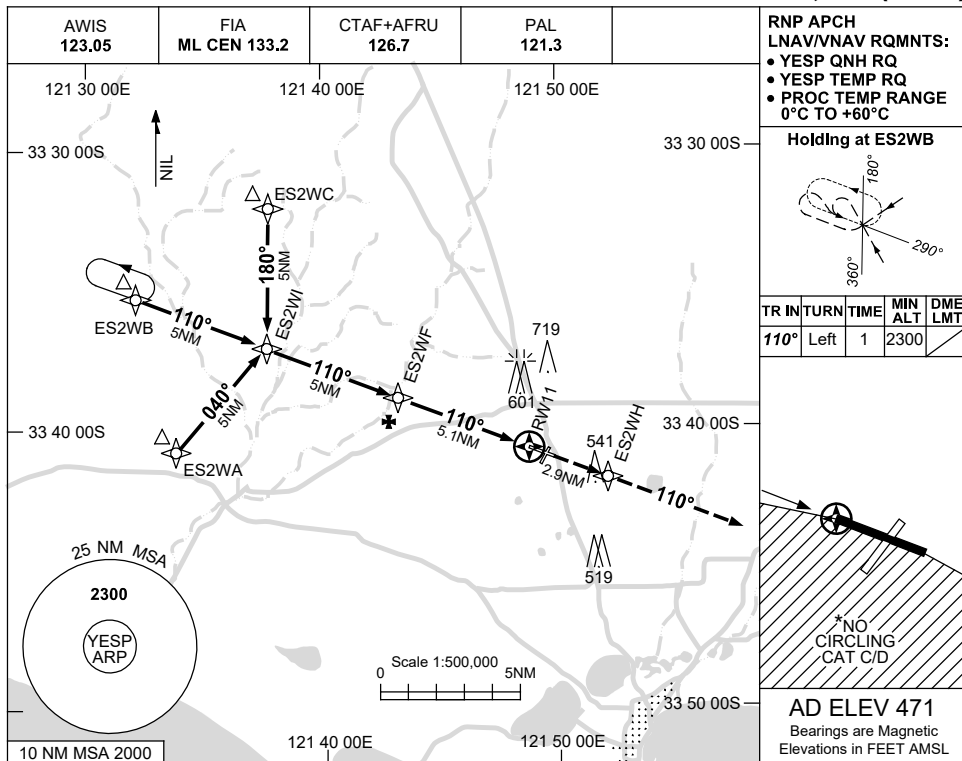
MISSED APPROACH:
CLIMB ON TRACK
TO 2300FT.

NM TO ESP VOR	25	15	10	5	4	0													
CIRCLING MINIMA						A,B: 1350-2.4	C: 1350-4.0	D: 1350-5.0											
NM TO ESP VOR	6.5	6	5	4	3.5														
ALT (3° APCH PATH)	2300	2130	1820	1500	1350														

USE QNH

RNP RWY 11
ESPERANCE, WA (YESP)

21 MAR 2024



RNP APCH LNAV/VNAV RQMTS:

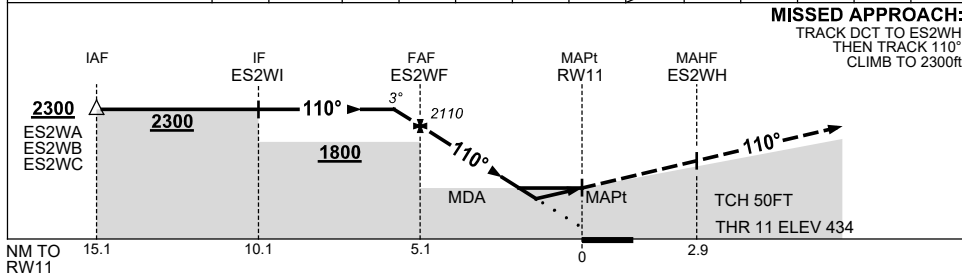
- YESP QNH RQ
- YESP TEMP RQ
- PROC TEMP RANGE 0°C TO +60°C

Holding at ES2WB

TR	IN	TURN	TIME	MIN ALT	DME LMT
110°	Left	1	2300		

AD ELEV 471
 Bearings are Magnetic
 Elevations in FEET AMSL

NM TO NEXT WPT	0.6	ES2WF	4	3	2	1.6	1	RW11
ALT (3° APCH PATH)	2300	2110	1760	1440	1120	990	810	



NOTES

CATEGORY	A	B	C	D
LNAV/VNAV		810 (376-2.1)		
LNAV		990 (556-3.2)		
CIRCLING*	1120 (649-2.4)		1230 (759-4.0)	1260 (789-5.0)
ALTERNATE	(1149-4.4)		(1259-6.0)	(1289-7.0)

1. MAX IAS: INITIAL : 210KT.
- *2. NO CIRCLING CAT C/D STH OF RWY 11/29.

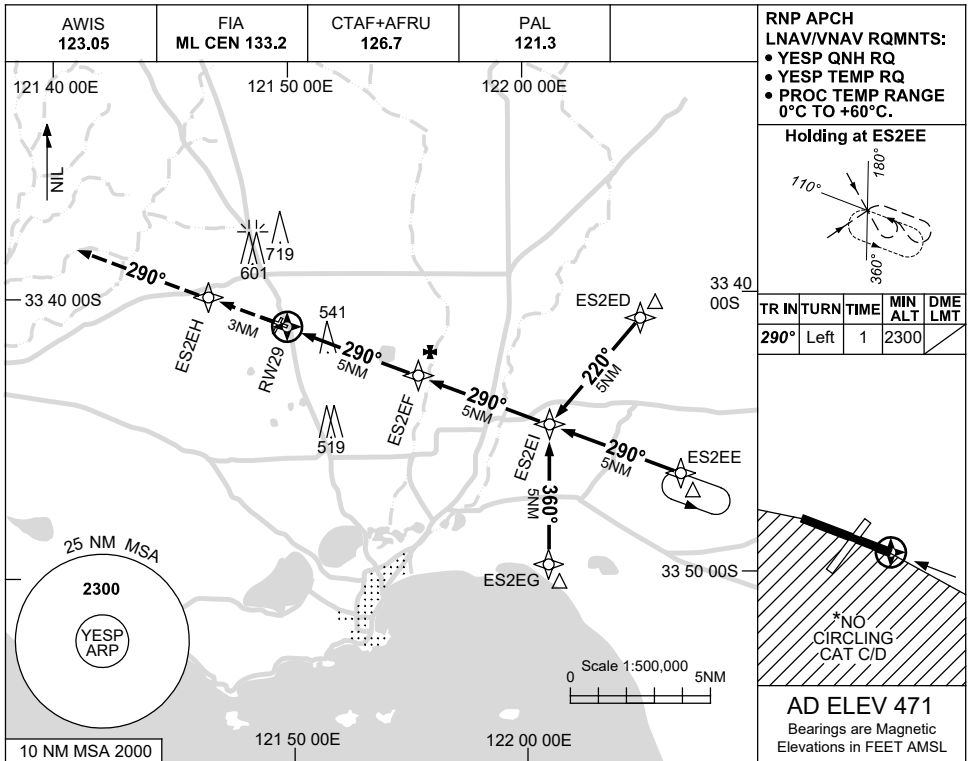
Changes: CAT C CIRCLING, MAG VAR, Editorial.

ESPGN01-178

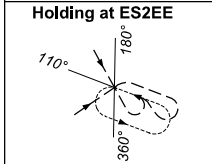
USE QNH

RNP RWY 29
ESPERANCE, WA (YESP)

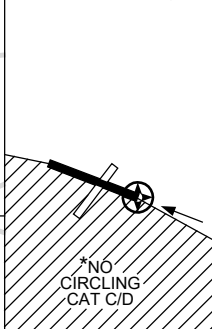
21 MAR 2024



RNP APCH
 LNAV/VNAV RQMTS:
 • YESP QNH RQ
 • YESP TEMP RQ
 • PROC TEMP RANGE
 0°C TO +60°C.

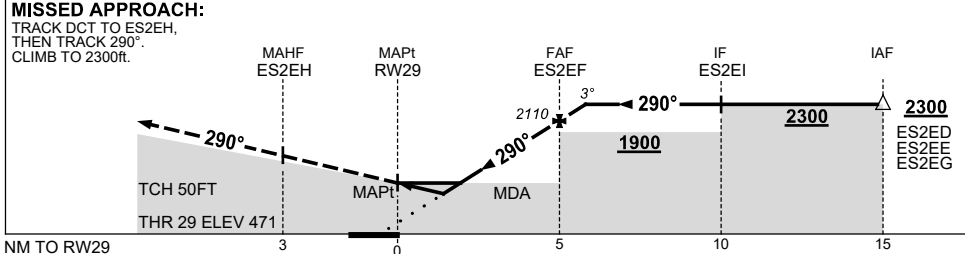


TR IN	TURN	TIME	MIN ALT	DME LMT
290°	Left	1	2300	



AD ELEV 471
 Bearings are Magnetic
 Elevations in FEET AMSL

NM TO NEXT WPT	RW29	0.9	1.5	2	3	4	ES2EF	0.6				
ALT (3° APCH PATH)		810	990	1160	1480	1790	2110	2300				



NOTES

CATEGORY	A	B	C	D
LNAV/VNAV	810 (339-1.9)			
LNAV	990 (519-2.9)			
CIRCLING*	1120 (649-2.4)	1230 (759-4.0)	1260 (789-5.0)	
ALTERNATE	(1149-4.4)	(1259-6.0)	(1289-7.0)	

- MAX IAS:
INITIAL : 210KT.
- *2. NO CIRCLING CAT C/D
STH OF RWY 11/29.

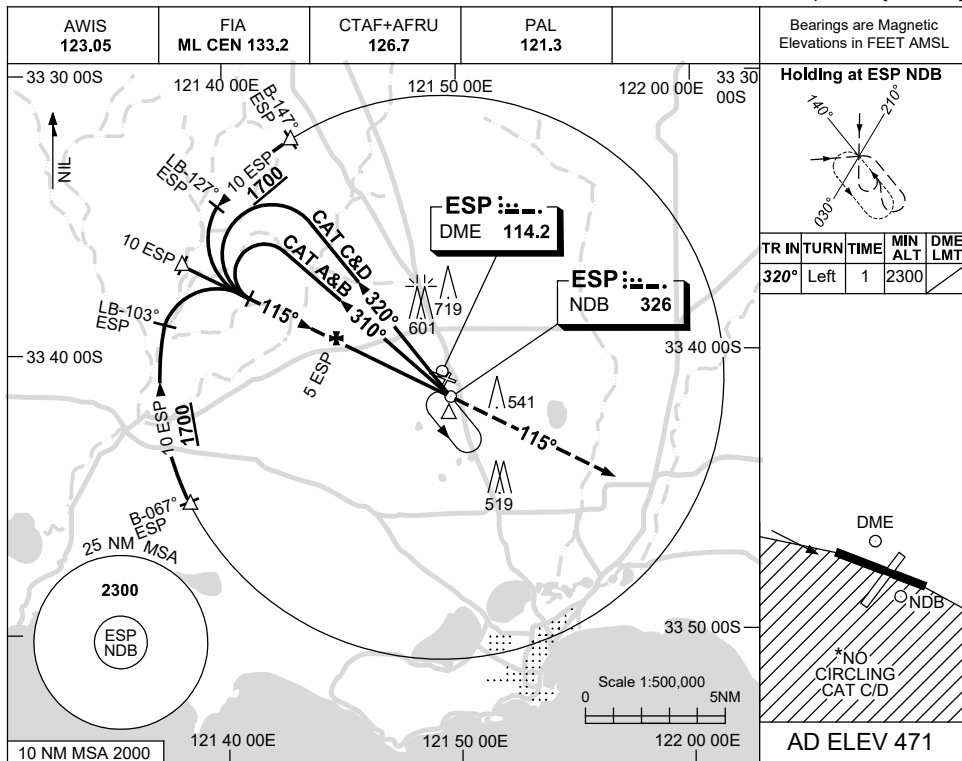
Changes: CAT C CIRCLING, MAG VAR, Editorial.

ESPGN02-178

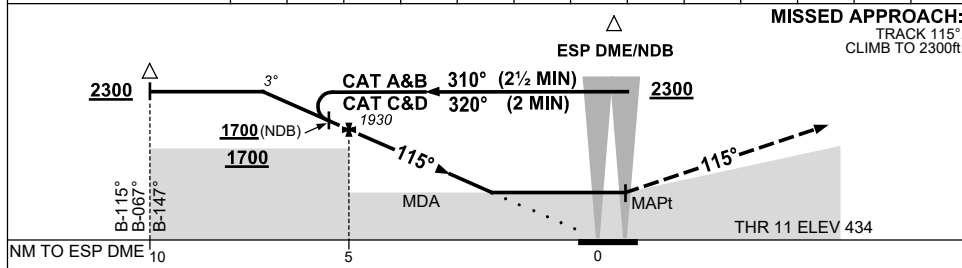
USE QNH

NDB RWY 11
ESPERANCE, WA (YESP)

21 MAR 2024



DIST BY DME	6.2	6	5	4	3	2				
ALT (3° APCH PATH)	2300	2250	1930	1610	1300	990				



CATEGORY	A	B	C	D
S-I NDB		1040 (606-3.4)		
S-I NDB/DME		990 (556-3.1)		
CIRCLING *	1120 (649-2.4)		1230 (759-4.0)	1260 (789-5.0)
ALTERNATE	(1149-4.4)		(1259-6.0) (1289-7.0)	

NOTES

- MAX IAS: INITIAL : 210KT.
- * NO CIRCLING CAT C/D STH OF RWY 11/29.

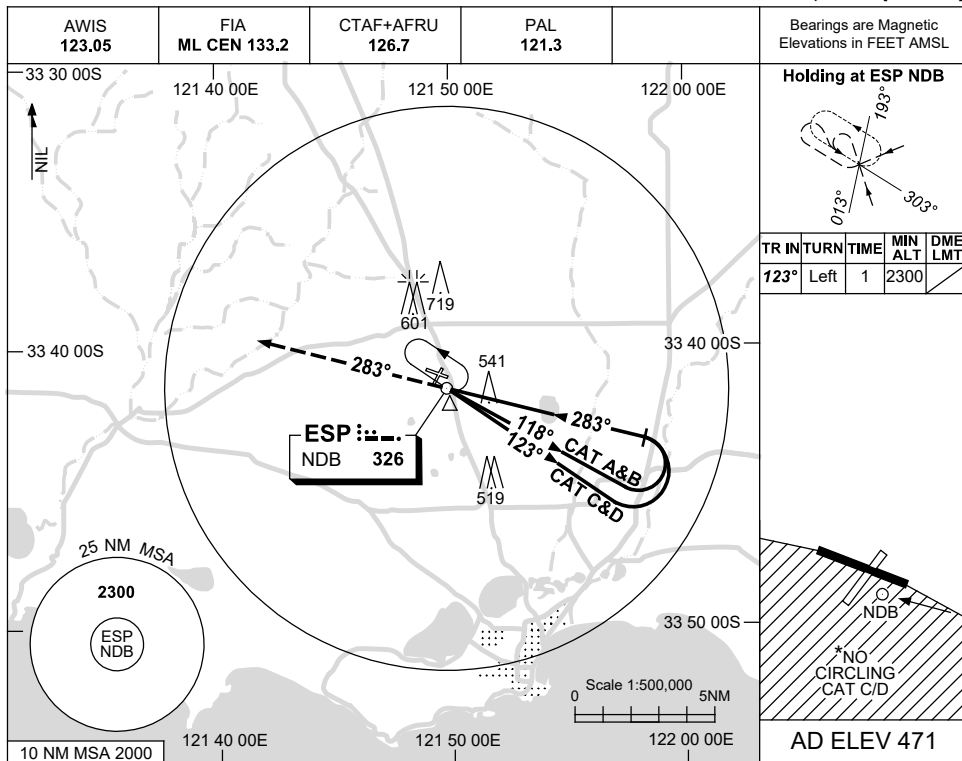
Changes: CAT C CIRCLING, MAG VAR, Editorial. ESPNO1- 178

USE QNH

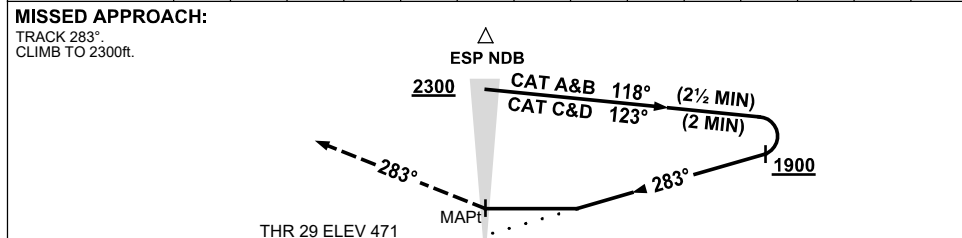
NDB RWY 29

21 MAR 2024

ESPERANCE, WA (YESP)



DME DIST	NOT APPLICABLE			
ALT				



NOTES

CATEGORY	A	B	C	D
S-I NDB	1040 (569-3.2)			
CIRCLING*	1120 (649-2.4)	1230 (759-4.0)	1260 (789-5.0)	
ALTERNATE	(1149-4.4)	(1259-6.0)	(1289-7.0)	

1. MAX IAS:
INITIAL : 180KT.
- * 2. NO CIRCLING CAT C/D
STH OF RWY 11/29.

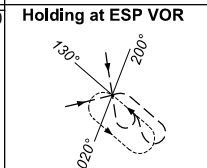
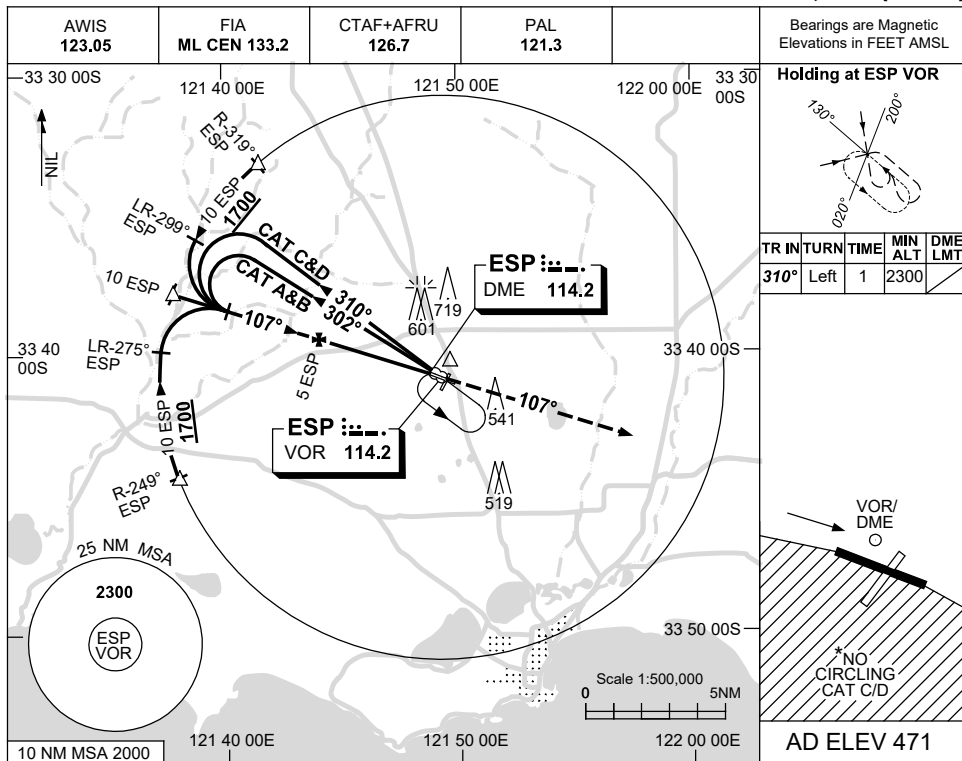
Changes: CAT C CIRCLING, MAG VAR, Editorial.

ESPNB02-178

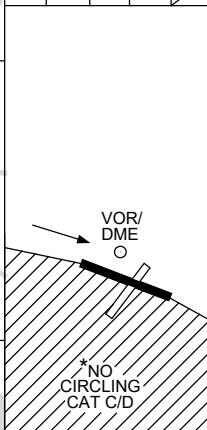
USE QNH

VOR RWY 11
ESPERANCE, WA (YESP)

21 MAR 2024

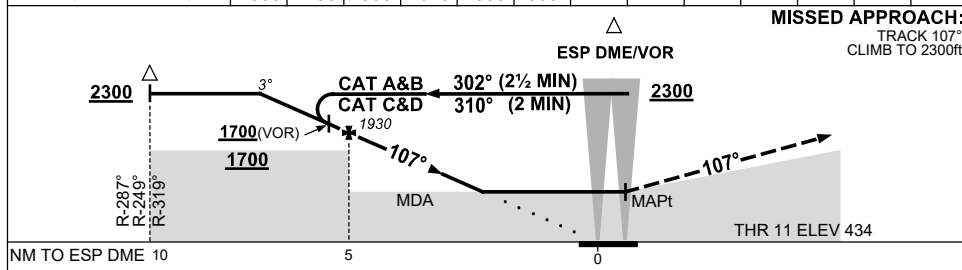


TR	IN	TURN	TIME	MIN ALT	DME LMT
310°	Left	1	2300		



AD ELEV 471

DIST BY DME	6.2	6	5	4	3	2				
ALT (3° APCH PATH)	2300	2250	1930	1610	1300	990				



NOTES

CATEGORY	A	B	C	D
S-I VOR		1040 (606-3.4)		
S-I VOR/DME		990 (556-3.1)		
CIRCLING*	1120 (649-2.4)		1230 (759-4.0)	1260 (789-5.0)
ALTERNATE	(1149-4.4)		(1259-6.0)	(1289-7.0)

- MAX IAS:
INITIAL : 210KT.
- *2. NO CIRCLING CAT C/D
STH OF RWY 11/29.

Changes: CAT C CIRCLING, MAG VAR, Editorial.

ESPVO01-178

