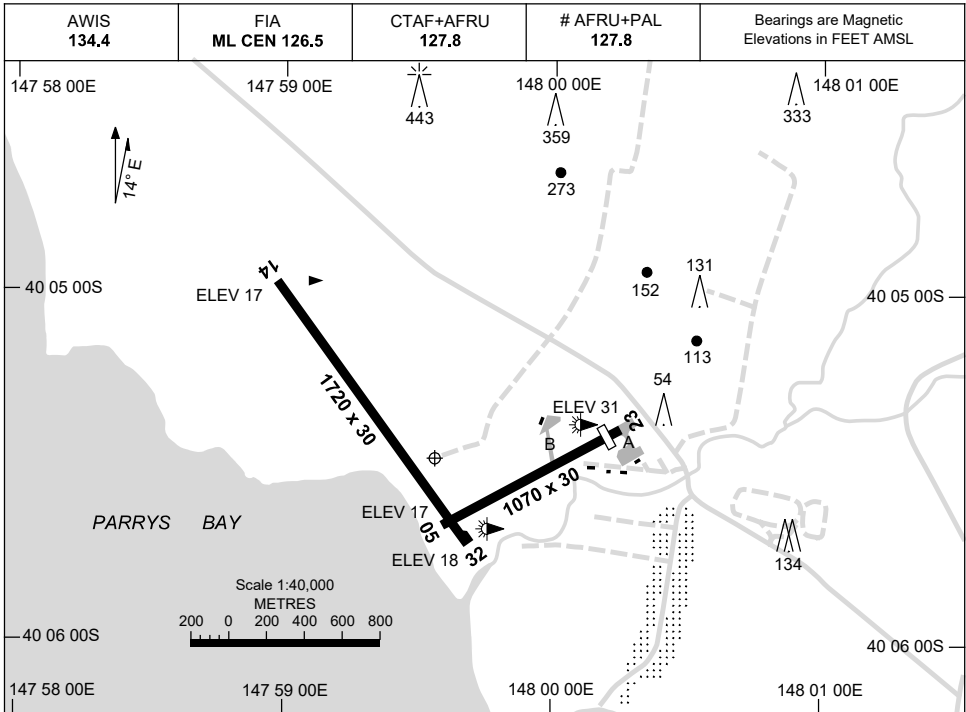


15 JUN 2023

AD ELEV 34
40 05 29S 147 59 34E

AERODROME CHART
FLINDERS ISLAND, TAS (YFLI)



| RWY | | AERODROME LIGHTING | |
|-----------|--------------------------|--------------------|----------------------------------|
| | | HBN | : FLG R 1 SEC |
| | | RL | : AFRU+PAL 127.8 , SDBY (15 SEC) |
| 14 | ¹³⁰ | LIRL | |
| | ³¹⁰ 32 | LIRL | |
| 05 | ⁰⁴⁷ | LIRL | |
| | ²²⁷ 23 | LIRL | |

NOTES

- # 1. ACTIVATION RANGE MAY BE REDUCED TO THE NORTH DUE TO HIGH TERRAIN.
2. AWIS 134.4 ACTIVATED BY 1 SEC TRANSMISSION.
3. FIA FREQ 126.5 AVBL CIRCUIT AREA.

Changes: NOTES and Editorial.

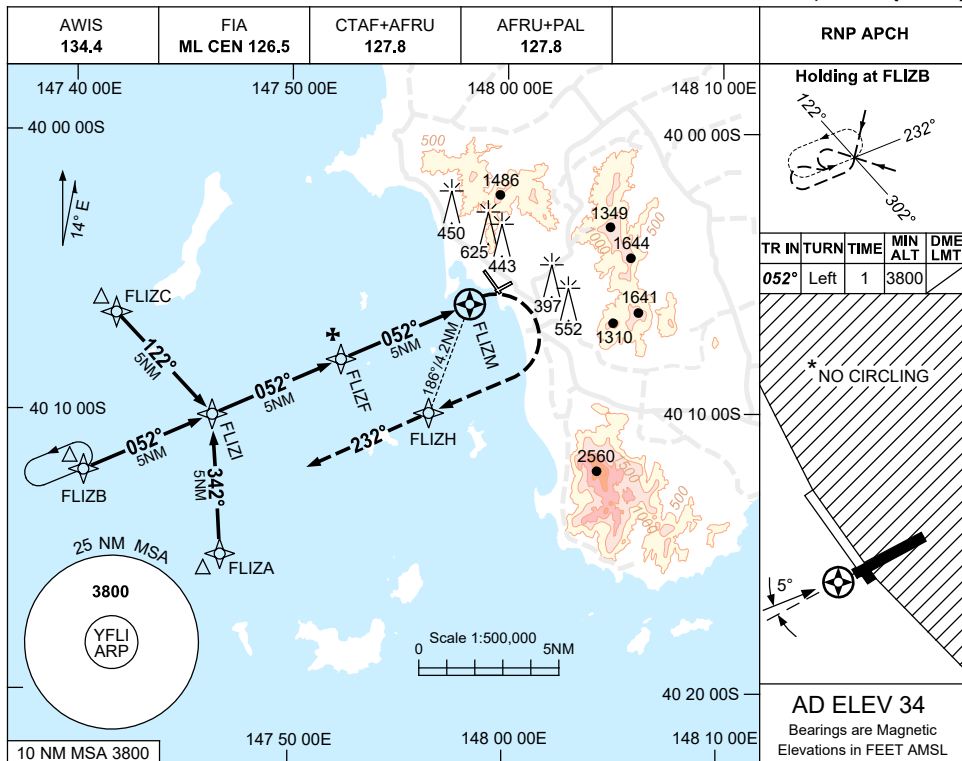
FLIAD01-175

USE QNH

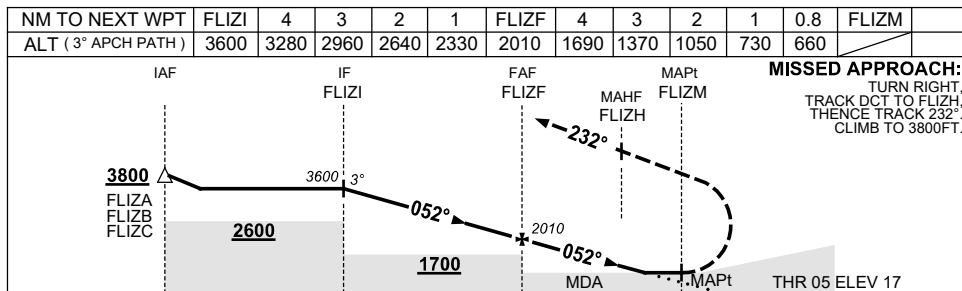
RNP Z RWY 05

15 JUN 2023

FLINDERS ISLAND, TAS (YFLI)



AD ELEV 34
Bearings are Magnetic
Elevations in FEET AMSL



MISSED APPROACH:
TURN RIGHT,
TRACK DCT TO FLIZH,
THENCE TRACK 232°,
CLIMB TO 3800FT.

NM TO FLIZM 15 10 5 0 1.1

| CATEGORY | A | B | C | D |
|------------|-----------------|---|-----------------|----------------|
| LNAV | 660 (643-3.7) | | | NOT APPLICABLE |
| CIRCLING * | 1170 (1136-2.4) | | 1270 (1236-4.0) | |
| ALTERNATE | (1636-4.4) | | (1736-6.0) | |

- NOTES**
- MAX IAS:
INITIAL : 210KT.
MAP TURN: 160KT.
 - *2. NO CIRCLING EAST OF RWY 14/32.
 - COLOUR: SEE SPEC NOTICES.

Changes: CHART TITLE, PBN SPECIFICATION BOX, Editorial.

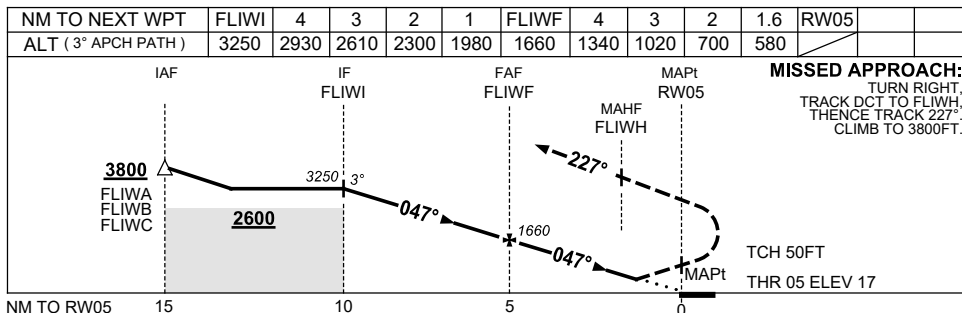
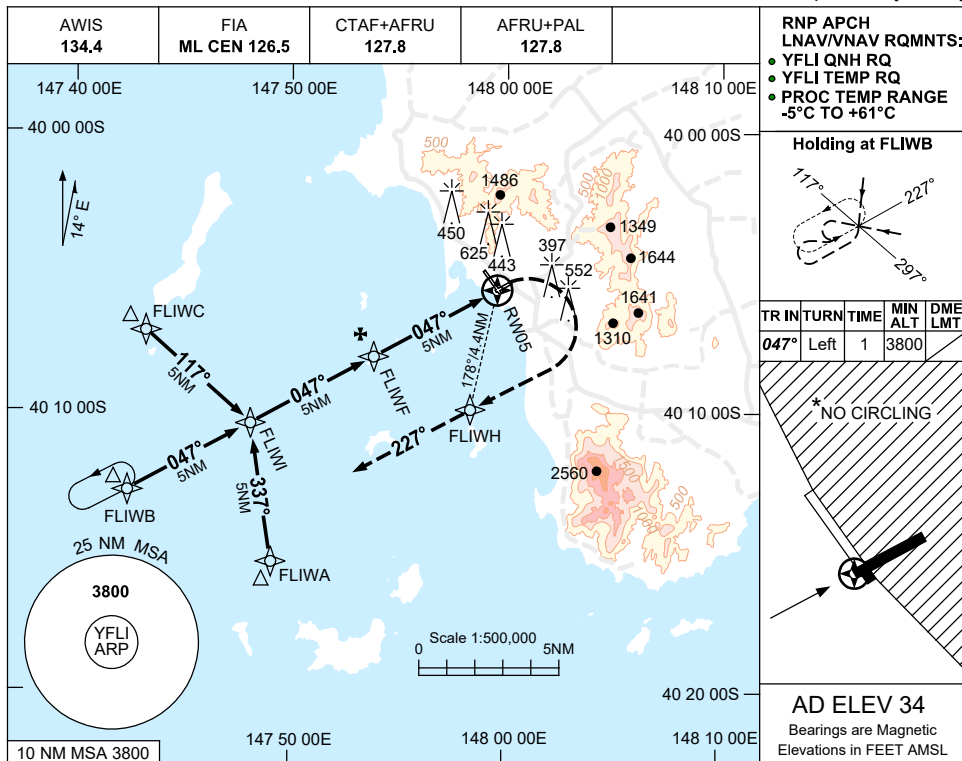
FLIGN01-175

USE QNH

RNP Y RWY 05

15 JUN 2023

FLINDERS ISLAND, TAS (YFLI)



| CATEGORY | A | B | C | D |
|------------|-----------------------|---|-----------------------|-----------------------|
| LNAV/VNAV | 580(563-3.2) | | | NOT APPLICABLE |
| CIRCLING * | 1170(1136-2.4) | | 1270(1236-4.0) | |
| ALTERNATE | (1636-4.4) | | (1736-6.0) | |

- NOTES**
1. MAX IAS:
 INITIAL : 210KT.
 MAP TURN: 160KT.
 - *2. NO CIRCLING EAST OF RWY 14/32.
 3. COLOUR: SEE SPEC NOTICES.

Changes: CHART TITLE, PBN SPECIFICATION BOX, Editorial.

FLIGN02-175