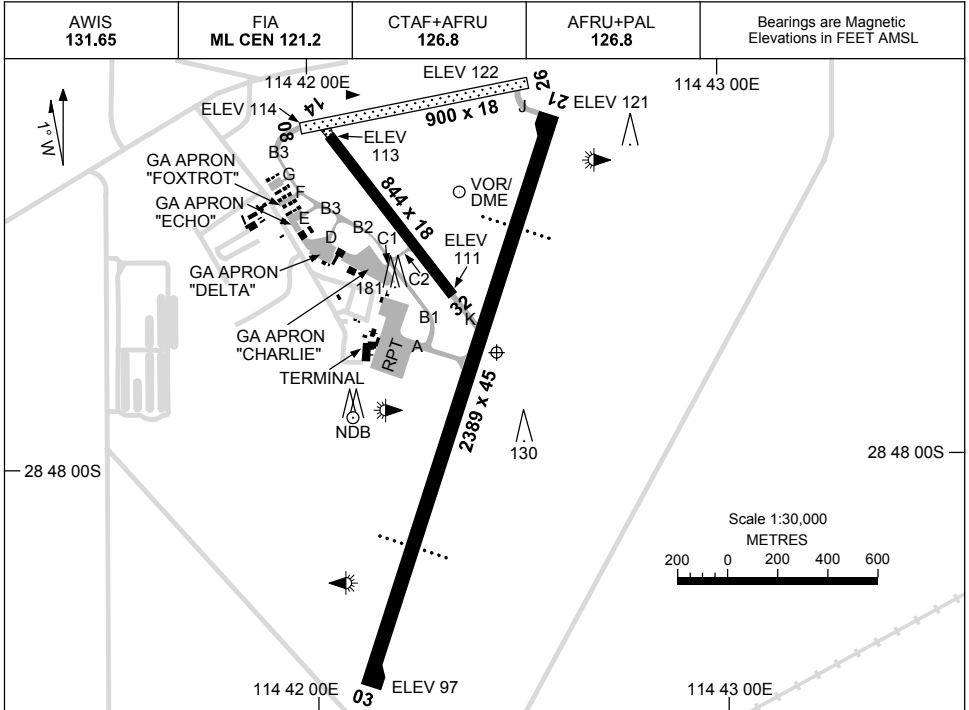


13 JUN 2024

AD ELEV 122
28 47 46S 114 42 27E

AERODROME CHART
GERALDTON, WA (YGEL)



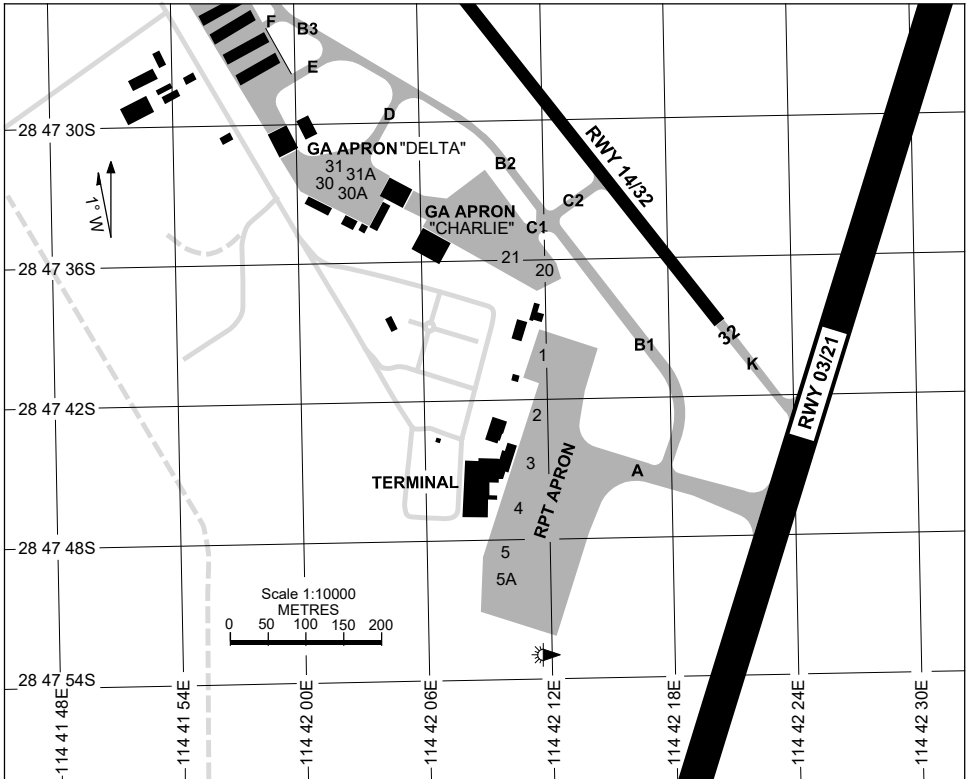
RWY		AERODROME INFORMATION
		TAXIWAY : BLUE EDGE (TWY A) ; GREEN CL REFLECTIVE MARKERS (TWY B1, B2, B3) RL : AFRU+PAL 126.8 , SDBY (30 SEC).
03 ⁰¹⁹		PAPI 3.0° 65FT LIRL
¹⁹⁹ 21		PAPI 3.0° 65FT LIRL
08 ⁰⁸¹		NIL
²⁶¹ 26		NIL
14 ¹⁴⁴		NIL
³²⁴ 32		NIL

NOTES

Changes: THR ELEV, AD ELEV, Editorial.

GELAD01-179

15 JUN 2023



PARKING POSITION INFORMATION

STAND	CO-ORDINATES		ELEV (ft)	CAPACITY	HYDRANT FUEL
1	28 47 40.14S	114 42 11.87E	109	A320/B738	NIL
2	28 47 42.70S	114 42 11.52E	108	A320/B738	NIL
3	28 47 44.68S	114 42 11.14E	108	A320/B738	NIL
4	28 47 46.65S	114 42 10.52E	107	A320/B738	NIL
5	28 47 48.60S	114 42 09.81E	107	A320/B738	NIL
5A	28 47 49.65S	114 42 09.89E	107	A333/B789	NIL
20	28 47 36.50S	114 42 12.02E	111	E120	NIL
21	28 47 35.94S	114 42 10.39E	110	EC25	NIL
30	28 47 32.51S	114 42 01.77E	111	B190/PC24	NIL
30A	28 47 32.77S	114 42 02.29E	110	B190/PC24	NIL
31	28 47 31.92S	114 42 02.14E	111	B190/PC24	NIL
31A	28 47 32.17S	114 42 02.66E	111	B190/PC24	NIL

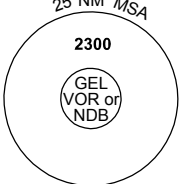
Changes: TAXIWAY.

GELAP01-175

DME or GNSS ARRIVAL PROCEDURES GERALDTON, WA (YGEL)

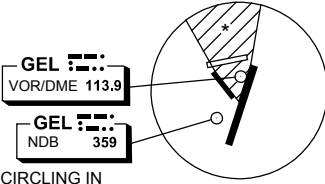
13 JUN 2024

AWIS 131.65	FIA ML CEN 121.2	CTAF+AFRU 126.8	AFRU+PAL 126.8		Bearings are Magnetic Elevations in FEET AMSL
----------------	---------------------	--------------------	-------------------	--	--



25 NM MSA
2300
GEL VOR or NDB

**DME USING GEL DME
REFERENCE WAYPOINT GEL VOR**

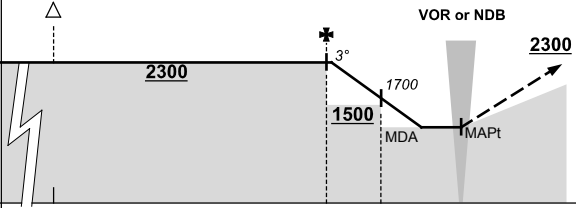


GEL VOR/DME 113.9
GEL NDB 359

* NO CIRCLING IN SECTOR NORTH OF RWY 14 & RWY 21.

10 NM MSA 2200

AD ELEV 122

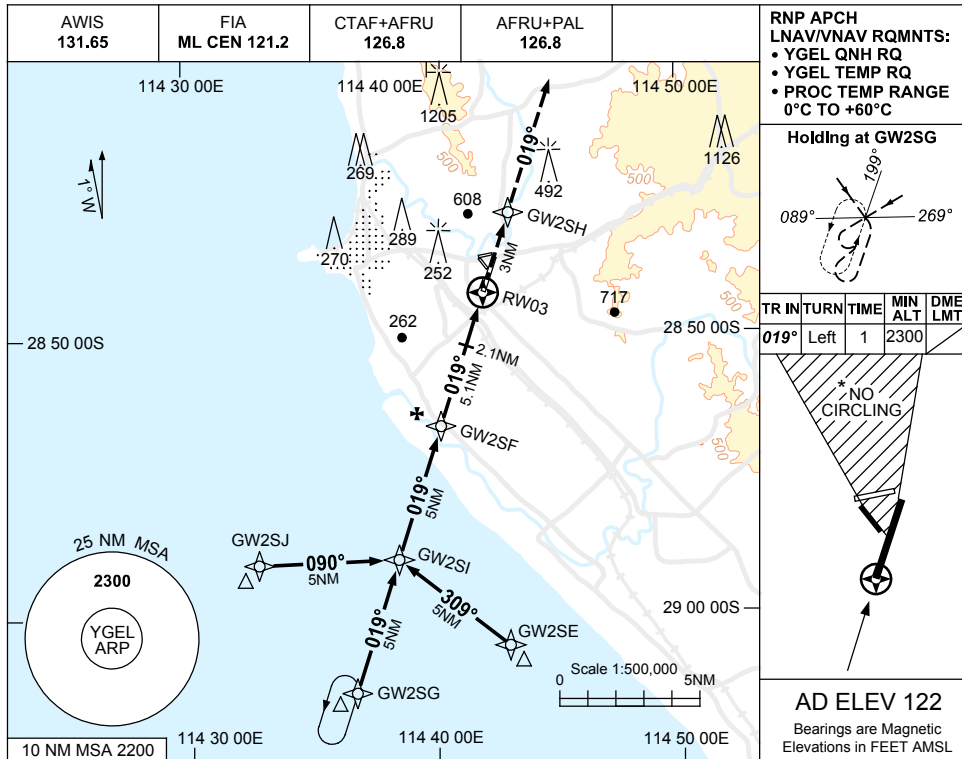
ALL TRACKS TO GEL VOR or NDB											<p>MISSED APPROACH: CLIMB ON TRACK TO 2300FT.</p>						
	NM TO GEL VOR	25	15	5	3	0											
CIRCLING MINIMA			A,B: 1190-2.4		C: 1290-4.0		D: 1420-5.0										
NM TO GEL VOR	4.9	4	3	2	1.4												
ALT (3° APCH PATH)	2300	2010	1700	1380	1190												

USE QNH

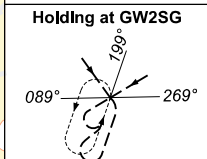
RNP RWY 03

GERALDTON, WA (YGEL)

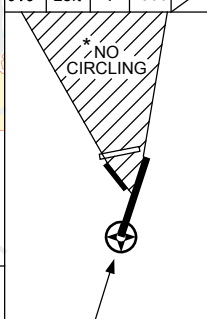
13 JUN 2024



RNP APCH
LNAV/VNAV RQMNTS:
• YGEL QNH RQ
• YGEL TEMP RQ
• PROC TEMP RANGE
0°C TO +60°C

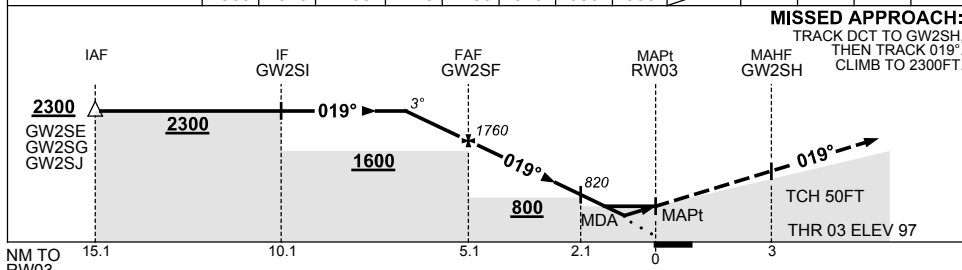


TR IN	TURN	TIME	MIN ALT	DME LMT
019°	Left	1	2300	



AD ELEV 122
Bearings are Magnetic
Elevations in FEET AMSL

NM TO NEXT WPT	1.7	1	4	3	2.1	1.7	1.1	RWY03
ALT (3° APCH PATH)	2300	2070	1760	1420	1100	820	680	500



MISSED APPROACH:
TRACK DCT TO GW2SH,
THEN TRACK 019°,
CLIMB TO 2300FT.

TCH 50FT
THR 03 ELEV 97

NOTES

CATEGORY	A	B	C	D
LNAV/VNAV	500 (403-2.3)			
LNAV	680 (583-3.3)			
CIRCLING *	1190 (1068-2.4)		1290 (1168-4.0)	1420 (1298-5.0)
ALTERNATE	(1568-4.4)		(1668-6.0)	(1798-7.0)

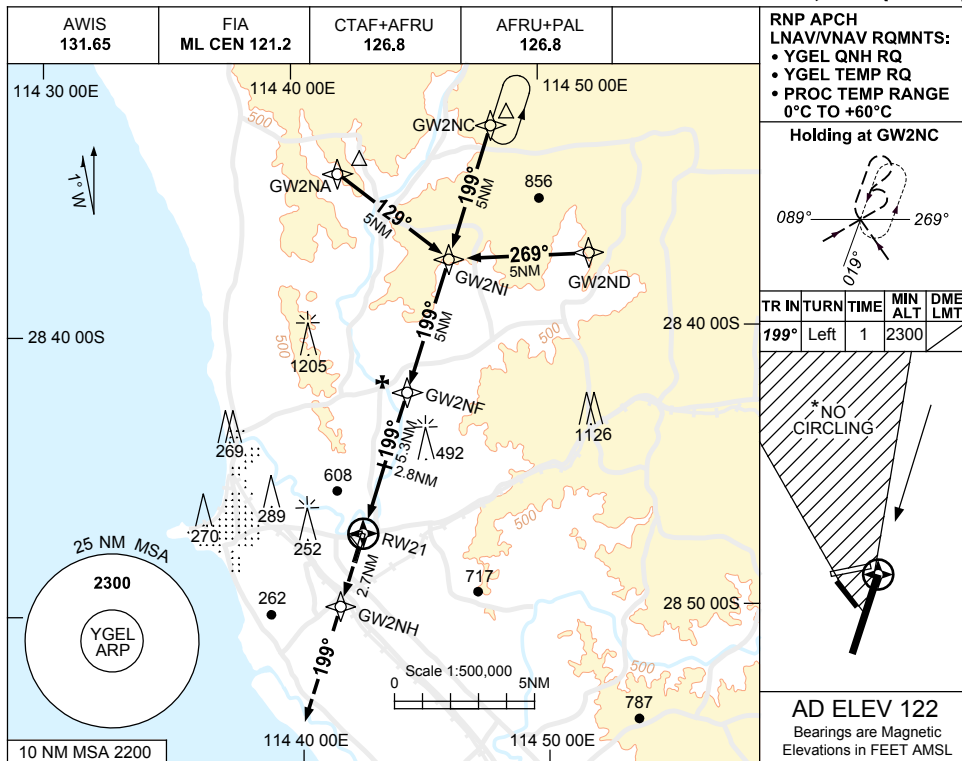
- MAX IAS:
INITIAL : 210KT.
- * NO CIRCLING IN
SECTOR NORTH OF
RWY 14 & RWY 21.
- COLOUR: SEE
SPEC NOTICES.

Changes: AD ELEV, MINIMA, DIST-ALT TABLE, MNM ALT, Editorial. GELGN01-179

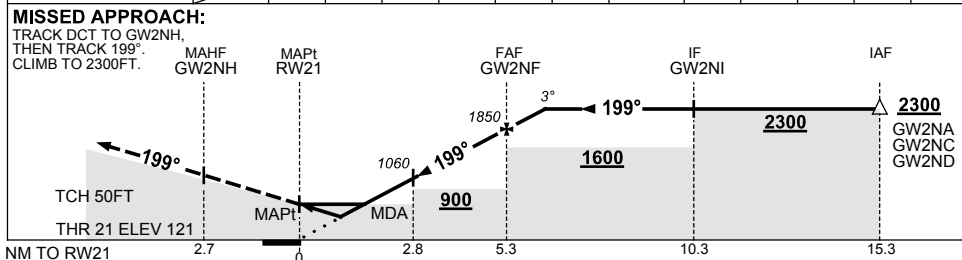
USE QNH

RNP RWY 21
GERALDTON, WA (YGEL)

13 JUN 2024



NM TO NEXT WPT	RW21	1.2	1.8	2	2.8	3	4	GW2NF	1	1.4			
ALT (3° APCH PATH)		560	750	810	1060	1130	1440	1850	2170	2300			



CATEGORY	A	B	C	D
LNAV/VNAV	560 (439-2.5)			
LNAV	750 (628-3.6)			
CIRCLING *	1190 (1068-2.4)		1290 (1168-4.0)	
ALTERNATE	(1568-4.4)		(1798-7.0)	

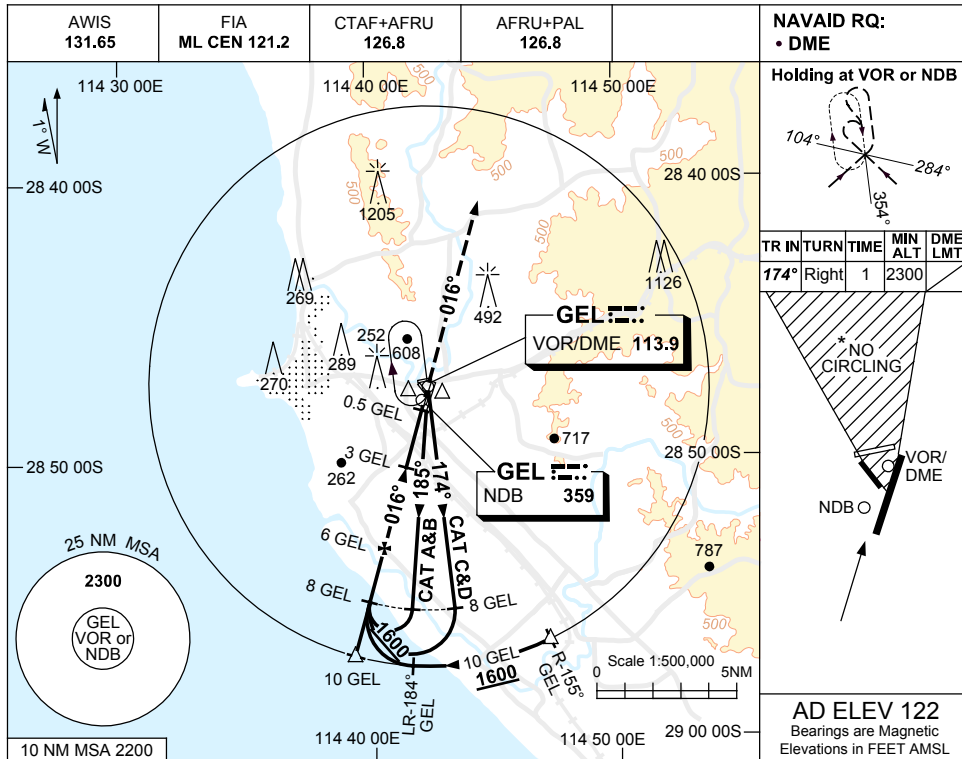
- NOTES**
- MAX IAS:
INITIAL : 210KT.
 - NO CIRCLING IN SECTOR NORTH OF RWY 14 & RWY 21.
 - COLOUR: SEE SPEC NOTICES.

Changes: AD ELEV, THR ELEV, MINIMA, DIST-ALT TABLE, Editorial. GELGN02-179

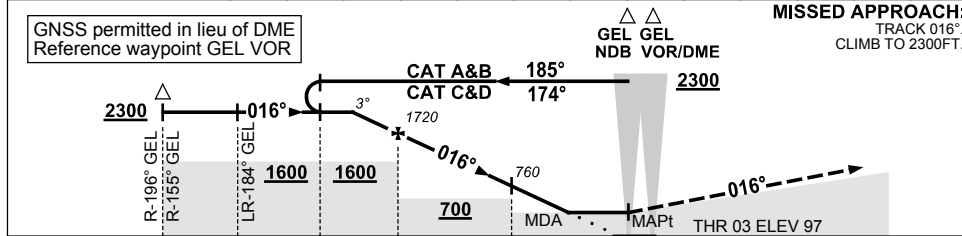
USE QNH

NDB-Z or VOR-Z RWY 03
GERALDTON, WA (YGEL)

13 JUN 2024



DIST BY DME	7.8	7	6	5	4	3	2.9						
ALT (3° APCH PATH)	2300	2030	1720	1400	1080	760	730						



CATEGORY	A	B	C	D
S-I VOR/DME or NDB/DME	730 (633-3.6)			
CIRCLING*	1190 (1068-2.4)	1290 (1168-4.0)	1420 (1298-5.0)	
ALTERNATE	(1568-4.4)	(1668-6.0)	(1798-7.0)	

- NOTES**
1. MAX IAS:
INITIAL : 210KT.
 - * 2. NO CIRCLING IN SECTOR NORTH OF RWY 14 & RWY 21.
 3. COLOUR: SEE SPEC NOTICES.

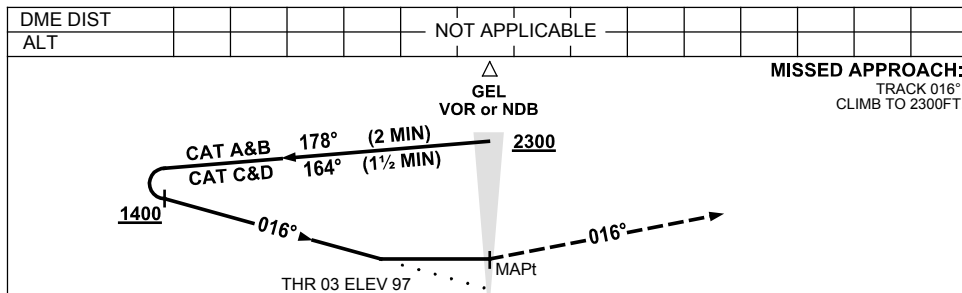
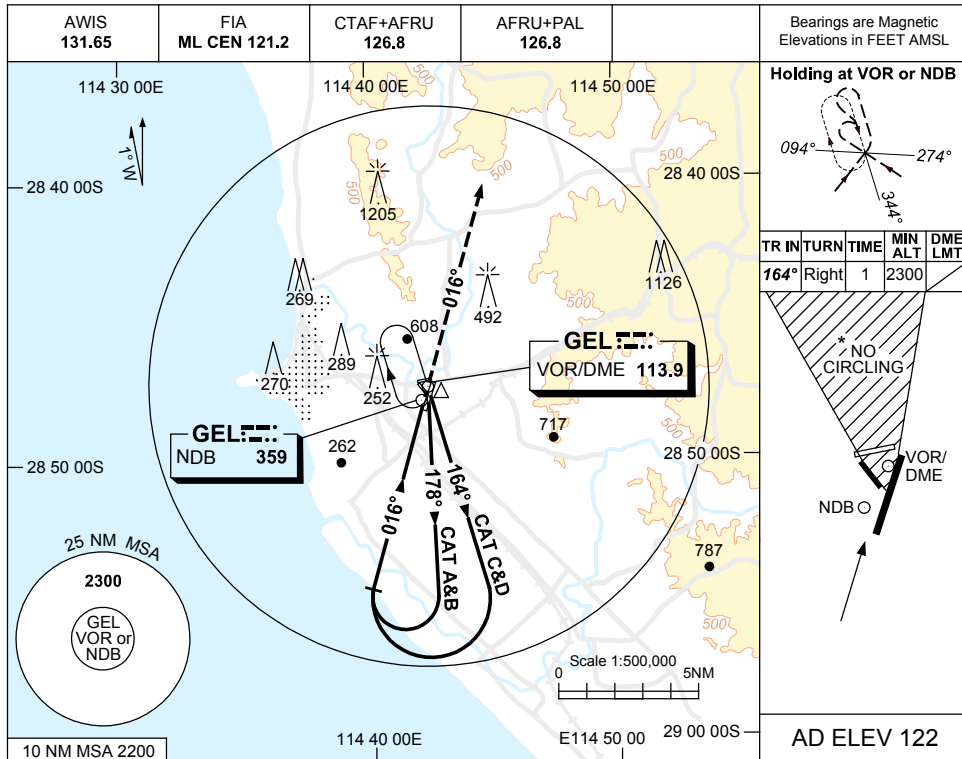
Changes: AD ELEV, MINIMA.

GELNB01-179

USE QNH

NDB-Y or VOR-Y RWY 03
GERALDTON, WA (YGEL)

13 JUN 2024



NOTES

CATEGORY	A	B	C	D
S-I VORorNDB	800 (703-4.0)			
CIRCLING *	1190 (1068-2.4)	1290 (1168-4.0)	1420 (1298-5.0)	
ALTERNATE	(1568-4.4)	(1668-6.0)	(1798-7.0)	

1. MAX IAS:
INITIAL : 210KT.
- * 2. NO CIRCLING IN
SECTOR NORTH OF
RWY 14 & RWY 21.
3. COLOUR: SEE
SPEC NOTICES.

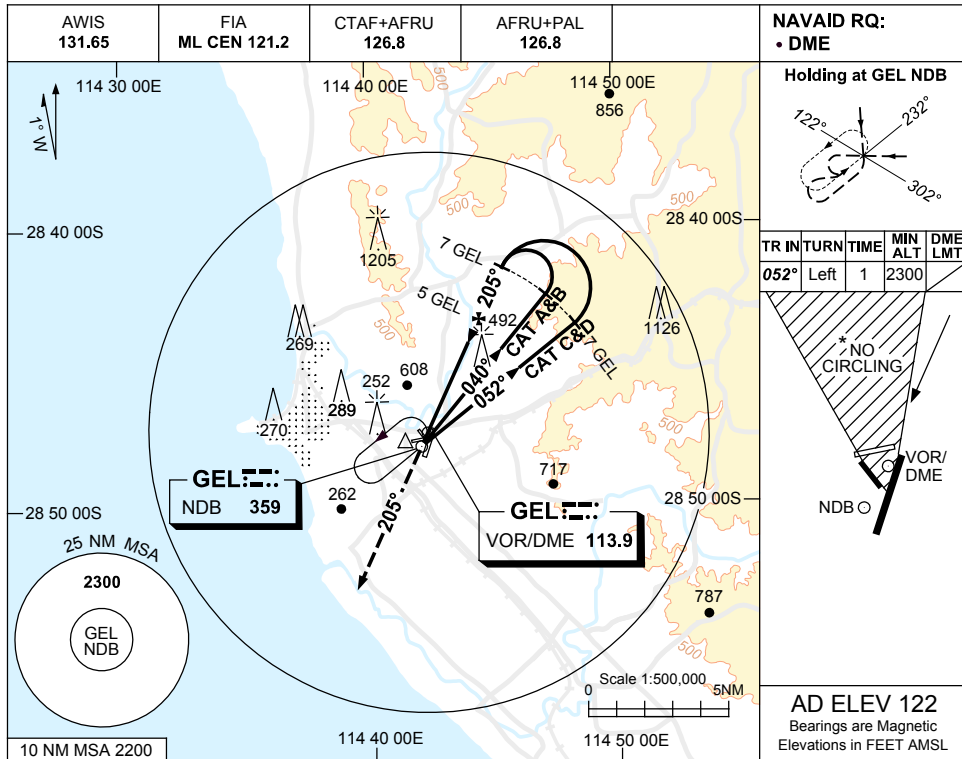
Changes: AD ELEV, MINIMA.

GELNB02-179

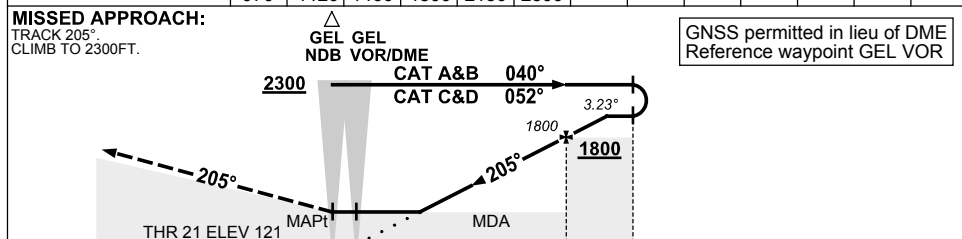
USE QNH

NDB RWY 21
GERALDTON, WA (YGEL)

13 JUN 2024



DIST BY DME	2.6	3	4	5	6	6.5							
ALT (3.23° APCH PATH)	970	1120	1460	1800	2150	2300							



NM BY DME: 0.5 0 5 7

NOTES

1. MAX IAS: INITIAL : 210KT.
- *2. NO CIRCLING IN SECTOR NORTH OF RWY 14 & RWY 21.
3. APCH PATH ANGLE DOES NOT COINCIDE WITH PAPI ON GLIDE SLOPE INDICATION.
4. COLOUR: SEE SPEC NOTICES.

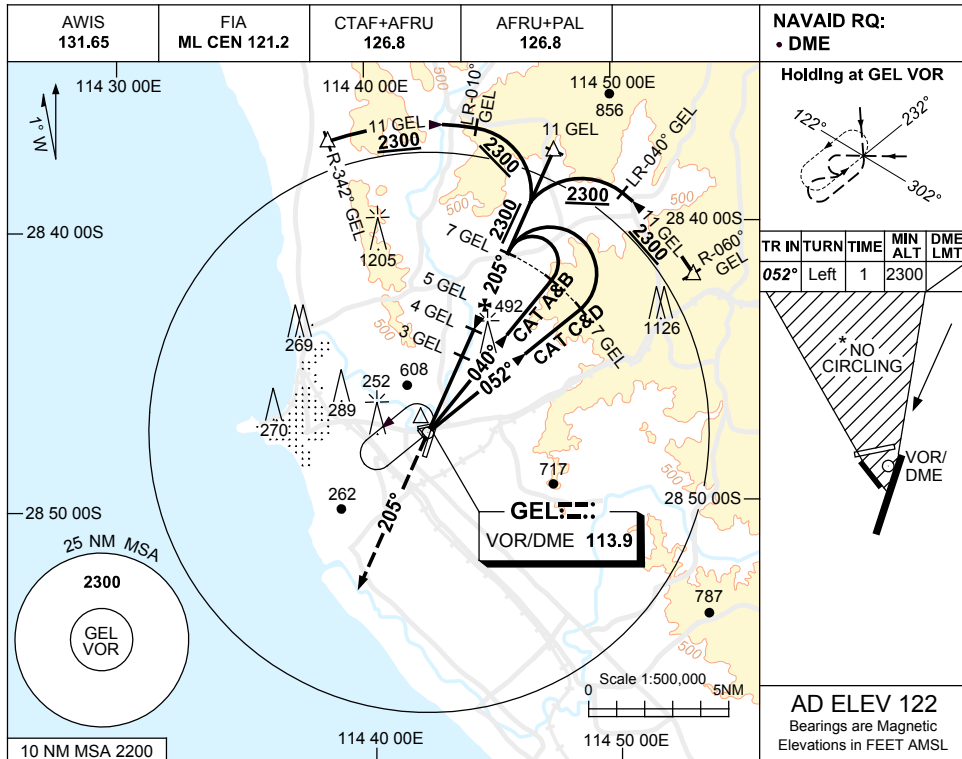
CATEGORY	A	B	C	D
S-I NDB/DME	970 (848-4.5)			
CIRCLING *	1190 (1068-2.4)		1290 (1168-4.0) 1420 (1298-5.0)	
ALTERNATE	(1568-4.4)		(1668-6.0) (1798-7.0)	

Changes: AD ELEV, THR ELEV, MINIMA. GELNB03-179

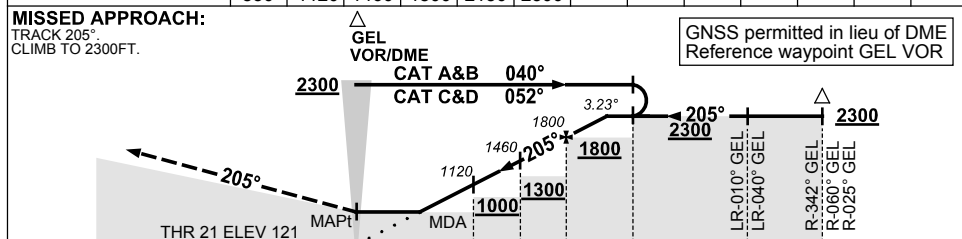
USE QNH

VOR RWY 21
GERALDTON, WA (YGEL)

13 JUN 2024



DIST BY DME	2.2	3	4	5	6	6.5								
ALT (3.23° APCH PATH)	830	1120	1460	1800	2150	2300								



NOTES

1. MAX IAS: INITIAL : 210KT.
- *2. NO CIRCLING IN SECTOR NORTH OF RWY 14 & RWY 21.
3. APCH PATH ANGLE DOES NOT COINCIDE WITH PAPI ON GLIDE SLOPE INDICATION.
4. COLOUR: SEE SPEC NOTICES.

CATEGORY	A	B	C	D
S-I VOR/DME	830 (708-3.8)			
CIRCLING *	1190 (1068-2.4)	1290 (1168-4.0)	1420 (1298-5.0)	
ALTERNATE	(1568-4.4)	(1668-6.0)	(1798-7.0)	

Changes: AD ELEV, MINIMA.

GELV001-179