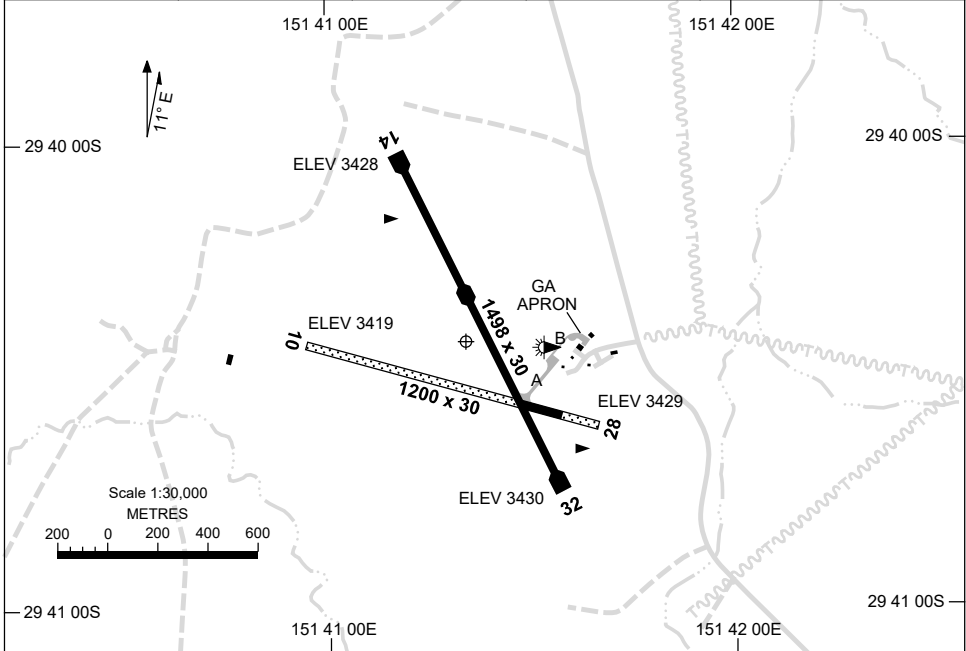


7 SEP 2023

AD ELEV 3431
29 40 30S 151 41 22E

AERODROME CHART
GLEN INNES, NSW (YGLI)

AWIS 133.575	FIA BN CEN 134.2	CTAF 126.7	PAL 125.3	Bearings are Magnetic Elevations in FEET AMSL
-----------------	---------------------	---------------	--------------	--



RWY	AERODROME LIGHTING	
		TAXIWAY : BLUE EDGE ON TWY A
14 ¹⁴³	LIRL	
³²³ 32	LIRL	
10 ⁰⁹⁵	NIL	
²⁷⁵ 28	NIL	

NOTES

- FIA FREQ 134.2 AVBL IN CIRCUIT AREA.
- AWIS RQ ONE-SECOND TRANSMIT PULSE TO ACTIVATE.

Changes: NOTES.

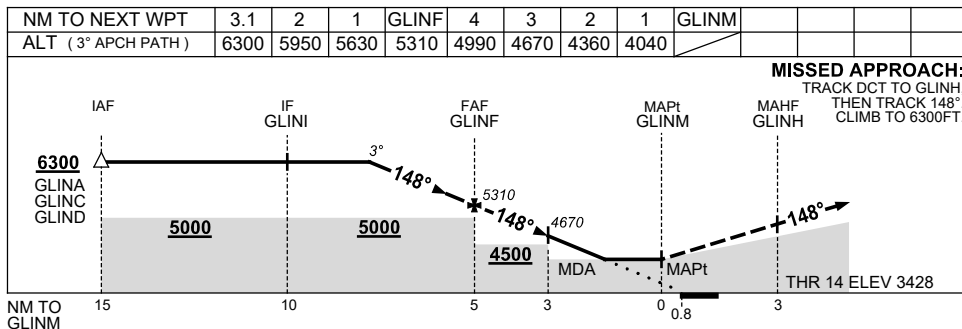
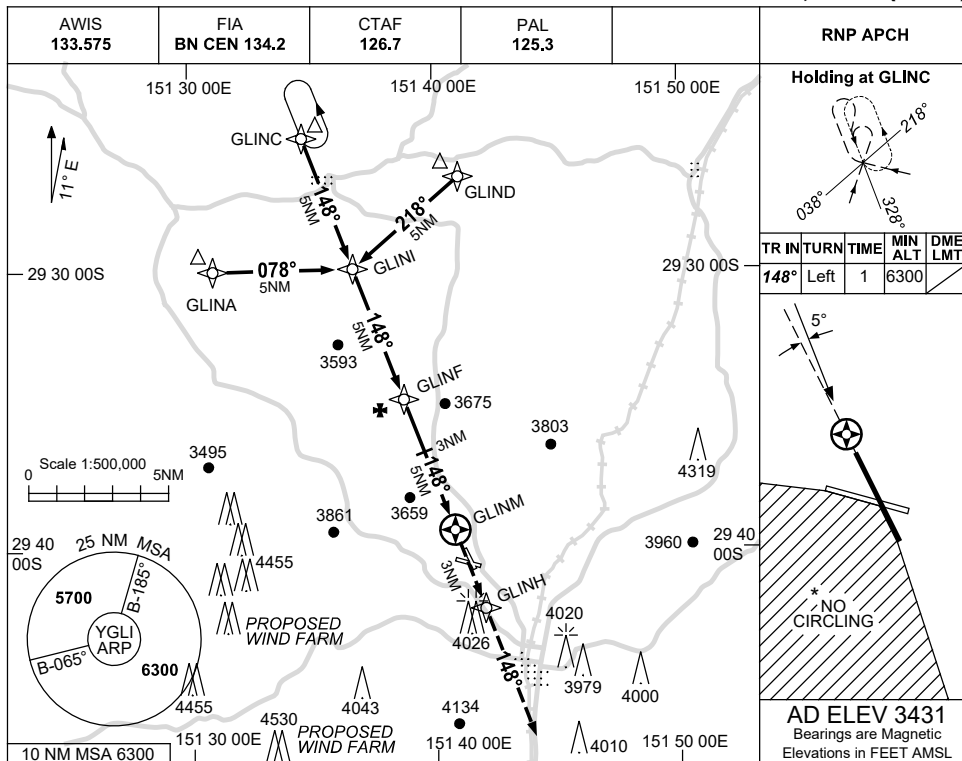
GLIAD01-176

USE QNH

RNP RWY 14

1 DEC 2022

GLEN INNES, NSW (YGLI)



CATEGORY	A	B	C	D
LNAV	4040 (609-3.5)			NOT APPLICABLE
CIRCLING*	4370 (939-2.4)	4530 (1099-4.0)		
ALTERNATE	(1439-4.4)		(1599-6.0)	

NOTES

- MAX IAS: INITIAL : 210KT.
- NO CIRCLING SOUTH-WEST OF RWY 10 & RWY 32.

Changes: AWIS, NOTES.

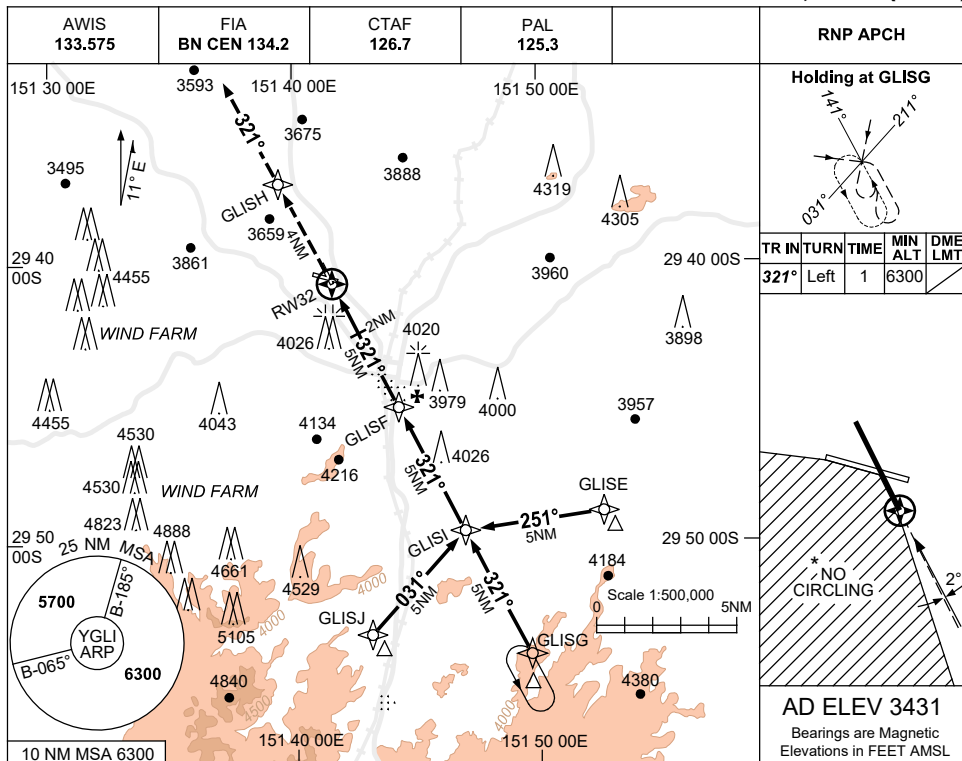
GLIGN01-173

USE QNH

RNP RWY 32

1 DEC 2022

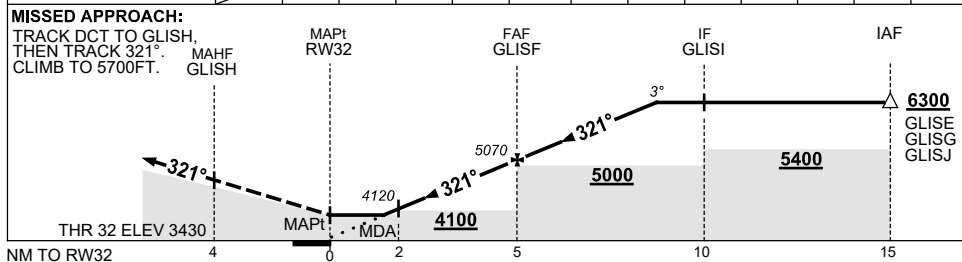
GLEN INNES, NSW (YGLI)



TR	IN	TURN	TIME	MIN ALT	DME LMT
321°	Left	1		6300	

AD ELEV 3431
Bearings are Magnetic
Elevations in FEET AMSL

NM TO NEXT WPT	RW32	1.8	2	3	4	GLISF	1	2	3	3.8			
ALT (3° APCH PATH)		4040	4120	4440	4750	5070	5390	5710	6030	6300			



NOTES

CATEGORY	A	B	C	D
LNAV	4040 (609-3.5)			NOT APPLICABLE
CIRCLING*	4370 (939-2.4)		4530 (1099-4.0)	
ALTERNATE	(1439-4.4)		(1599-6.0)	

- * 1. MAX IAS: INITIAL : 210KT.
- 2. NO CIRCLING IN SECTOR SW OF RWYS 10/28 AND 14/32.
- 3. COLOUR: SEE SPEC NOTICES.

Changes: AWIS, NOTES.

GLIGN02-173