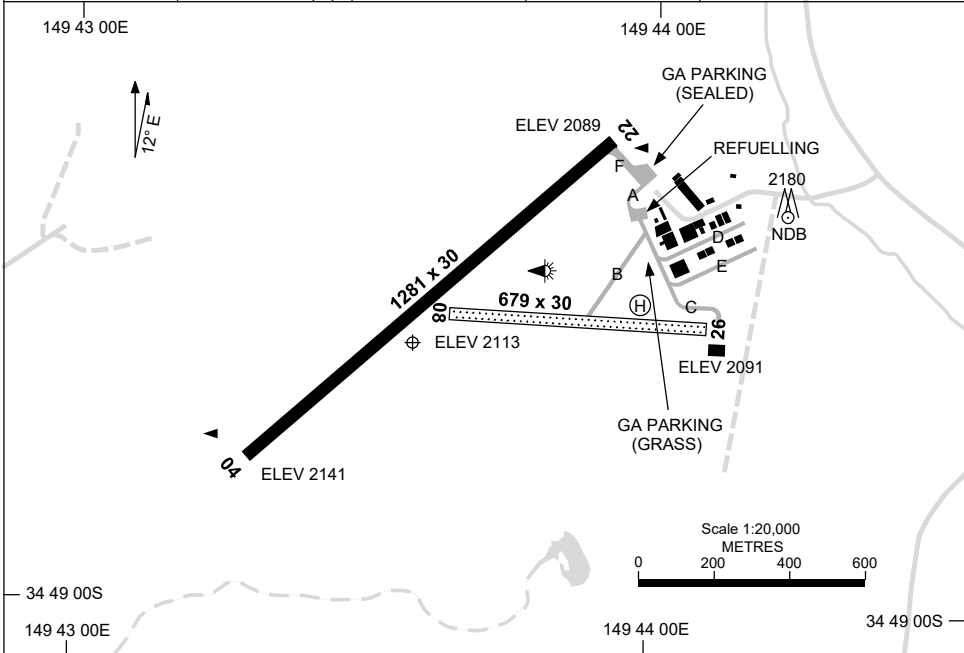


5 SEP 2024

AD ELEV 2141
34 48 37S 149 43 35E

AERODROME CHART
GOULBURN, NSW (YGLB)

AWIS 136.3	FIA ML CEN 121.2 (E) 124.1 (W)	CTAF+AFRU 127.15	PAL+AA 119.6	Bearings are Magnetic Elevations in FEET AMSL
---------------	--------------------------------------	---------------------	-----------------	--



RWY		AERODROME LIGHTING
		TAXIWAY : BLUE EDGE RL : PAL+AA 119.6
04 <small>035</small>	LIRL	
<small>215</small> 22	LIRL	
08 <small>080</small>	NIL	
<small>260</small> 26	NIL	

NOTES

- FIA FREQ 121.2 ON GROUND.
- AWIS RQ 1 SEC PULSE TO ACT.

Changes: HELIPAD ADDED, Editorial.

GLBAD01-180

GNSS ARRIVAL PROCEDURES GOULBURN, NSW (YGLB)

15 JUN 2023

AWIS 136.3	FIA ML CEN 121.2 (E) 124.1 (W)	CTAF+AFRU 127.15	PAL+AA 119.6		Bearings are Magnetic Elevations in FEET AMSL
---------------	--------------------------------------	---------------------	-----------------	--	--

25 NM MSA

REFERENCE WAYPOINT GLB NDB

GLB

NDB

407

* NO CIRCLING NORTH OF RUNWAY 04/22.

* NO CIRCLING

10 NM MSA 4600

AD ELEV 2141

SECTOR A

NDB

MISSED APPROACH:

TURN LEFT,
TRACK 236°.
CLIMB TO 4700FT.

NM TO GLB NDB	25	15	12	8	6	5	2	0														
CIRCLING MINIMA	A,B: 3290-2.4			C: 3520-4.0			D: N/A															
NM TO GLB NDB	5.5	5	4	3	2	1.7	1															
ALT (3° APCH PATH)	4700	4560	4240	3920	3600	3520	3290															

SECTOR B

NDB

MISSED APPROACH:

TURN AS
APPROPRIATE,
TRACK 270°.
CLIMB TO 4700FT.

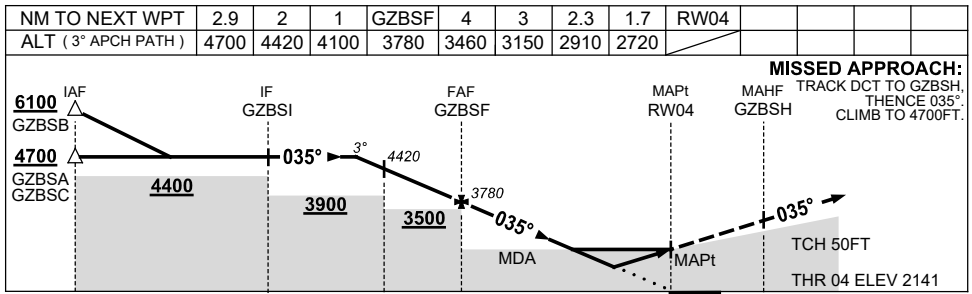
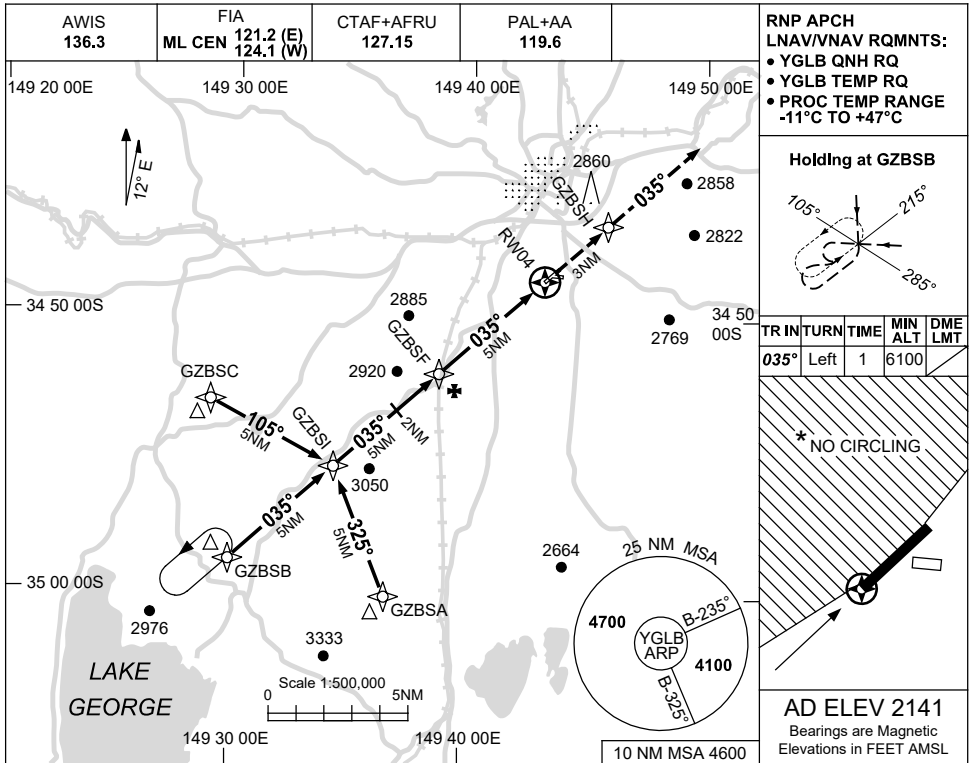
NM TO GLB NDB	25	15	11	7	5	4	2	0														
CIRCLING MINIMA	A,B: 3500-2.4			C: 3520-4.0			D: N/A															
NM TO GLB NDB	5.8	5	4	3	2	1.7																
ALT (3° APCH PATH)	4800	4560	4240	3920	3600	3500																

Changes: GFY OPS NOTE REMOVED.

15 JUN 2023

USE QNH

RNP RWY 04
GOULBURN, NSW (YGLB)



CATEGORY	A	B	C	D
LNAV/VNAV		2720 (579-3.3)		NOT APPLICABLE
LNAV		2910 (769-4.4)		
CIRCLING *	3290 (1149-2.4)	3520 (1379-4.0)		
ALTERNATE	(1649-4.4)	(1879-6.0)		

- MAX IAS: INITIAL : 220KT.
- NO CIRCLING N OF RWY 04/22.

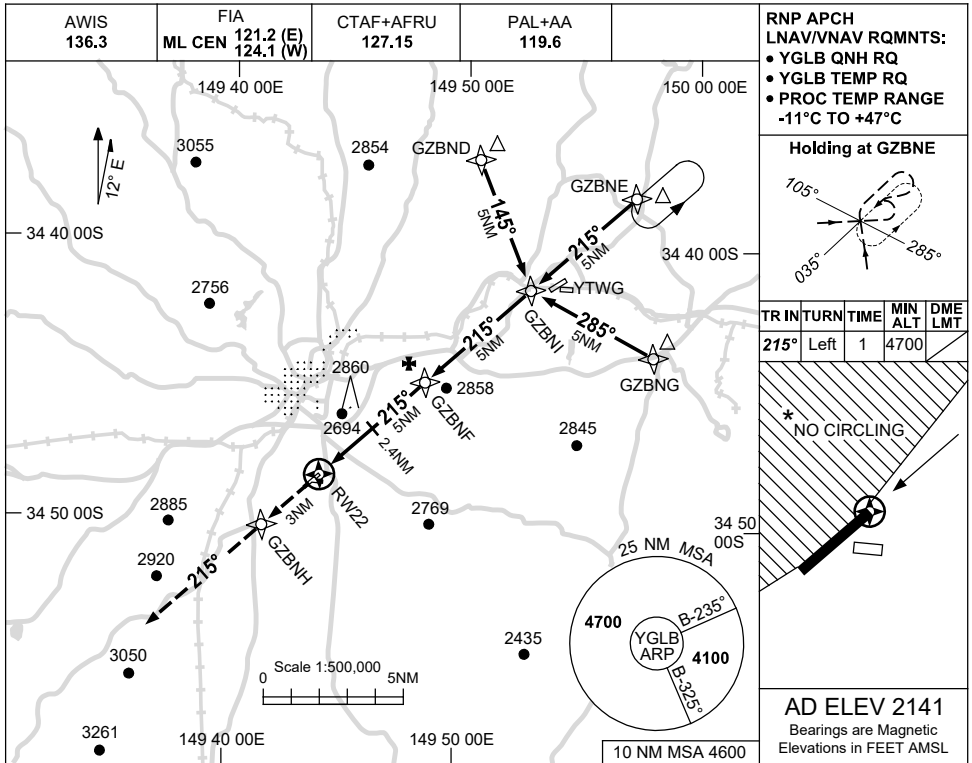
Changes: GZBSB HOLD ALT.

GLBGN01-175

15 JUN 2023

USE QNH

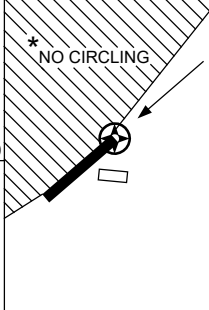
RNP RWY 22
GOULBURN, NSW (YGLB)



RNP APCH
LNAV/VNAV RQMTS:
• YGLB QNH RQ
• YGLB TEMP RQ
• PROC TEMP RANGE
-11°C TO +47°C

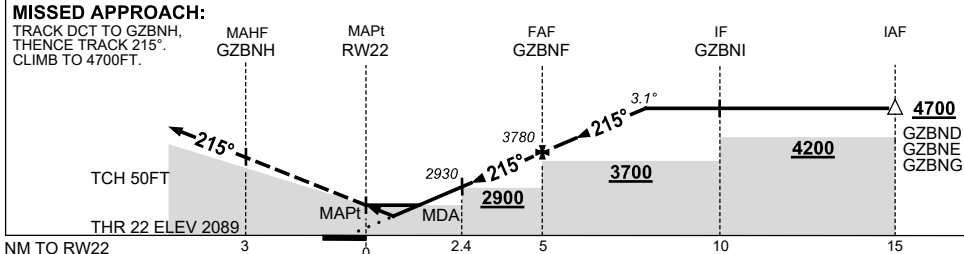


TR IN	TURN	TIME	MIN ALT	DME LMT
215°	Left	1	4700	



AD ELEV 2141
Bearings are Magnetic
Elevations in FEET AMSL

NM TO NEXT WPT	RW22	1.2	2	2.4	3	4	GZBNF	1	2	2.8			
ALT (3.1° APCH PATH)		2520	2810	2930	3130	3460	3780	4110	4440	4700			



CATEGORY	A	B	C	D
LNAV/VNAV	2520 (431-2.4)			NOT APPLICABLE
LNAV	2810 (721-4.0)			
CIRCLING *	3290 (1149-2.4)		3520 (1379-4.0)	
ALTERNATE	(1649-4.4)		(1879-6.0)	

- NOTES**
1. MAX IAS: INITIAL : 210KT.
 - * 2. NO CIRCLING N OF RWY 04/22.

Changes: GFY OPS SYMBOL REMOVED, Editorial.

GLBGN02-175

