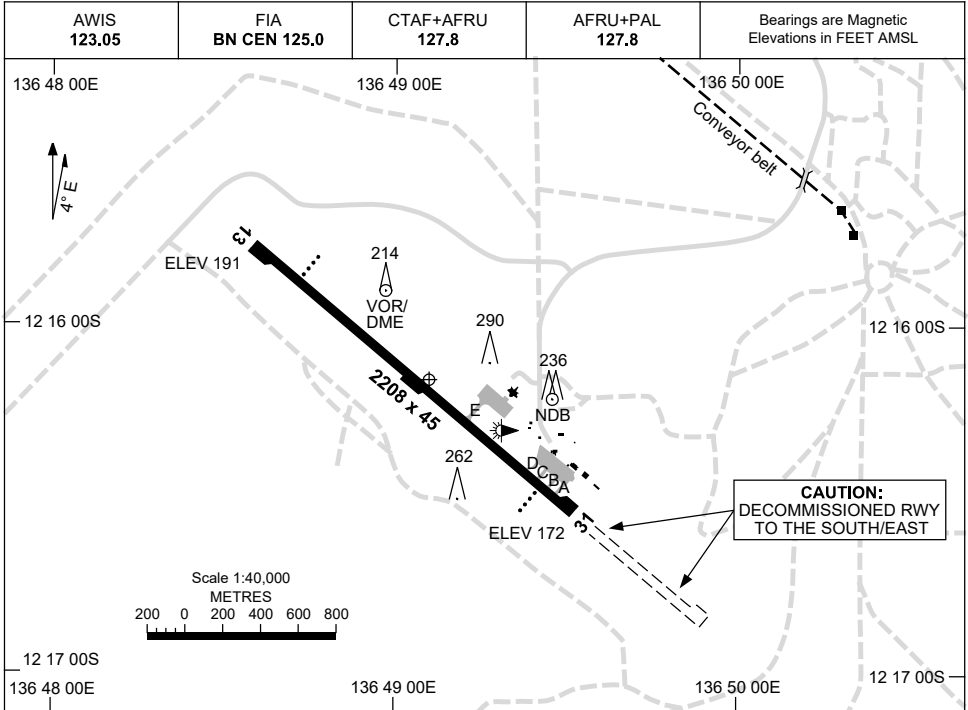


13 JUN 2024

AD ELEV 205
12 16 10S 136 49 06E

AERODROME CHART
GOVE, NT (YPGV)



	AERODROME LIGHTING
RWY	TAXIWAY : BLUE EDGE RL : AFRU+PAL 127.8 , SDBY
13 ¹²⁶	PAPI 3.0° 52FT LIRL
³⁰⁶ 31	PAPI 3.0° 52FT LIRL

NOTES

1. AWIS RQ ONE-SECOND PULSE TO ACTIVATE.

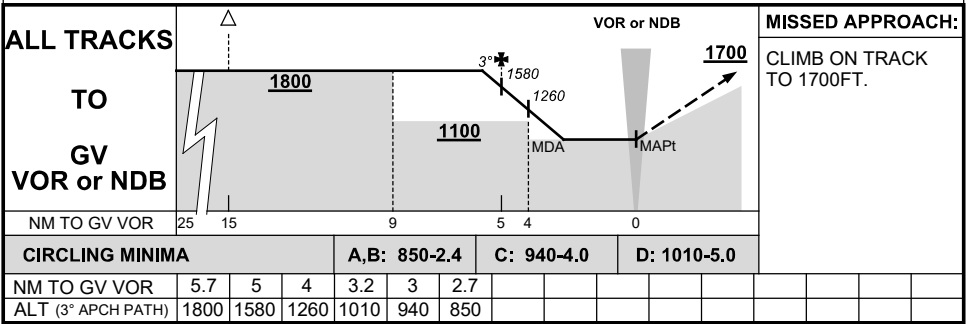
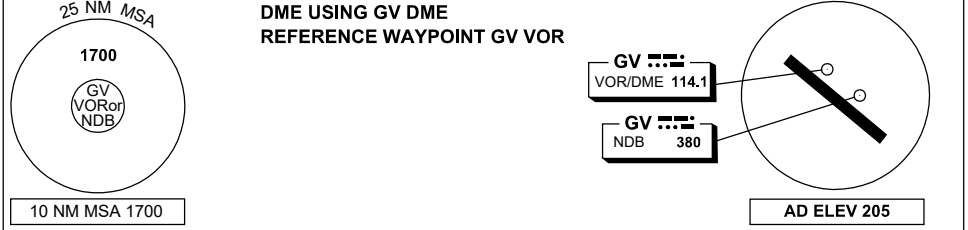
Changes: IWI RELOCATED, Editorial.

PGVAD01-179

DME or GNSS ARRIVAL PROCEDURES GOVE, NT (YPGV)

5 SEP 2024

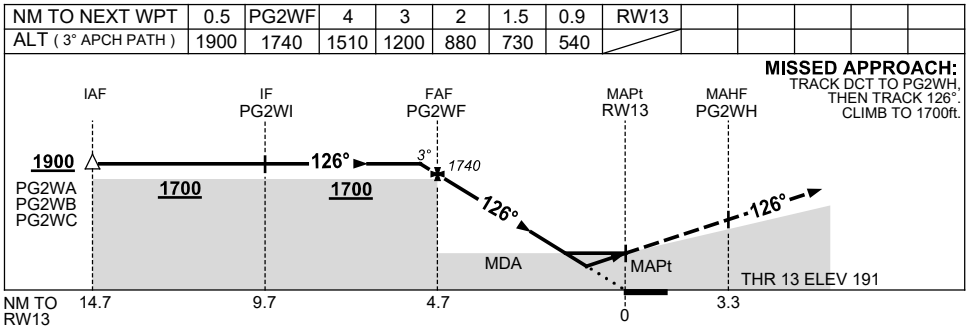
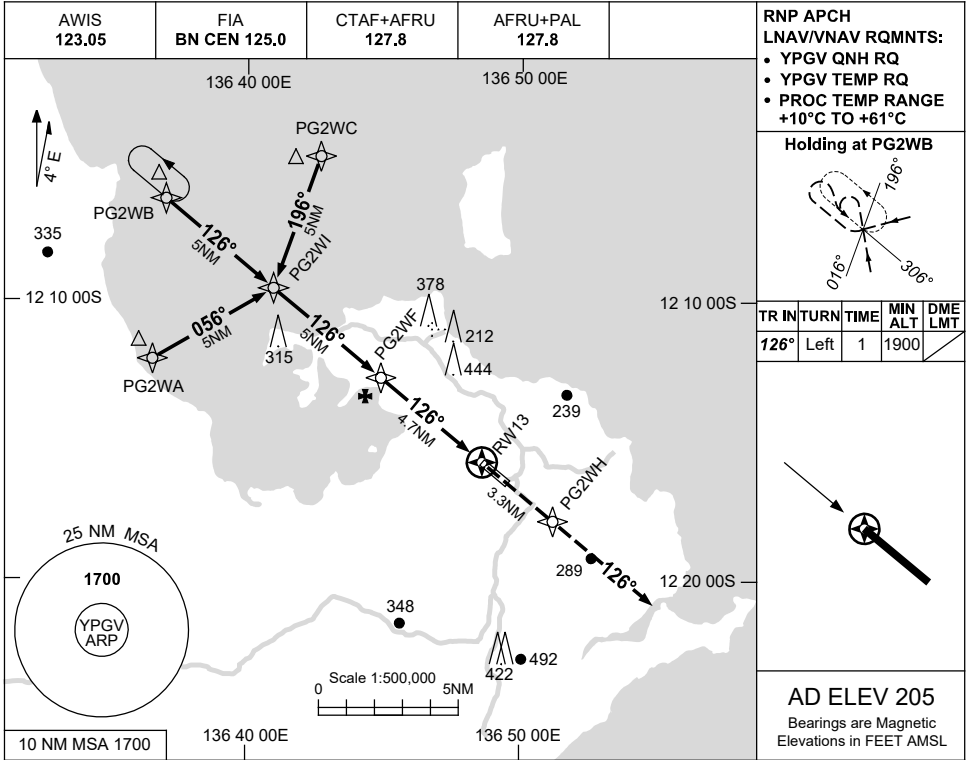
AWIS 123.05	FIA BN CEN 125.0	CTAF+AFRU 127.8	AFRU+PAL 127.8		Bearings are Magnetic Elevations in FEET AMSL
----------------	---------------------	--------------------	-------------------	--	--



USE QNH

RNP RWY 13
GOVE, NT (YPGV)

5 SEP 2024



NOTES

1. MAX IAS:
INITIAL : 240KT.

CATEGORY	A	B	C	D
LNAV/VNAV	540 (349-1.9)			
LNAV	730 (539-3.1)			
CIRCLING	840 (635-2.4)	940 (735-4.0)	1010 (805-5.0)	
ALTERNATE	(1135-4.4)	(1235-6.0)	(1305-7.0)	

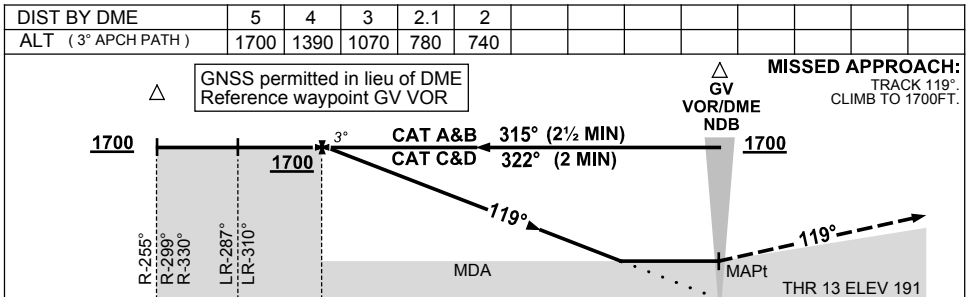
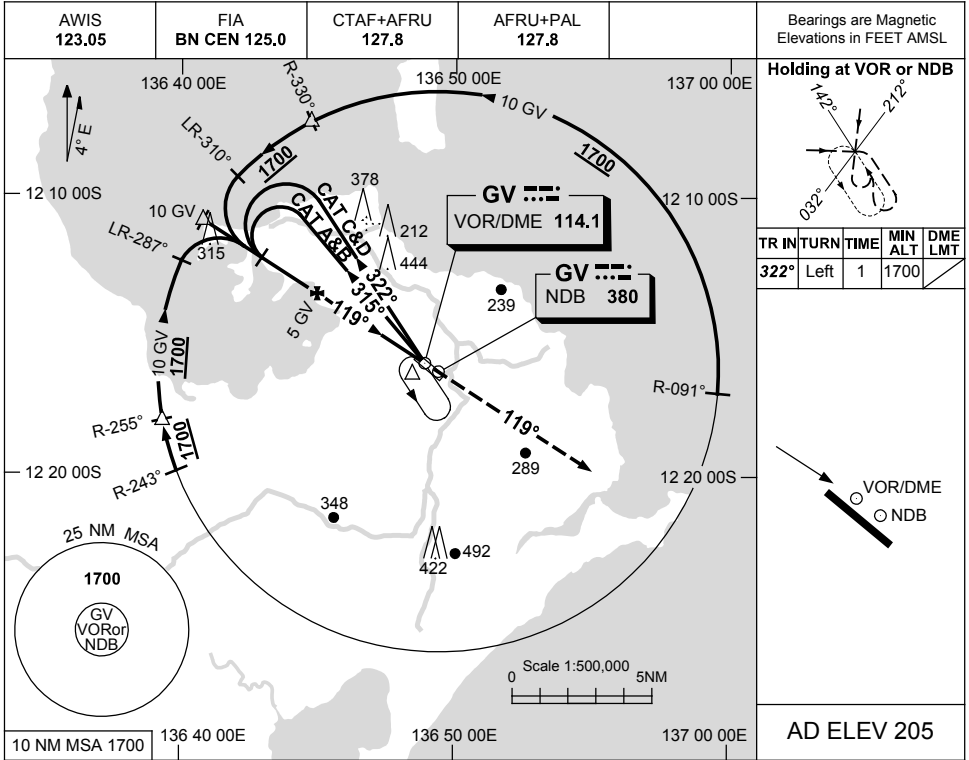
Changes: LNAV/VNAV, DIST-ALT TABLE, MAPt, MISSED APCH TRACK.

PGVGN01-180

USE QNH

NDB or VOR RWY 13
GOVE, NT (YPGV)

15 JUN 2023



NOTES

CATEGORY	A	B	C	D
S-I VOR or NDB		780 (589-3.3)		
S-I WITH DME		740 (549-3.1)		
CIRCLING	840 (635-2.4)		940 (735-4.0)	1010 (805-5.0)
ALTERNATE	(1135-4.4)		(1235-6.0)	(1305-7.0)

1. MAX IAS:
INITIAL : 210KT.

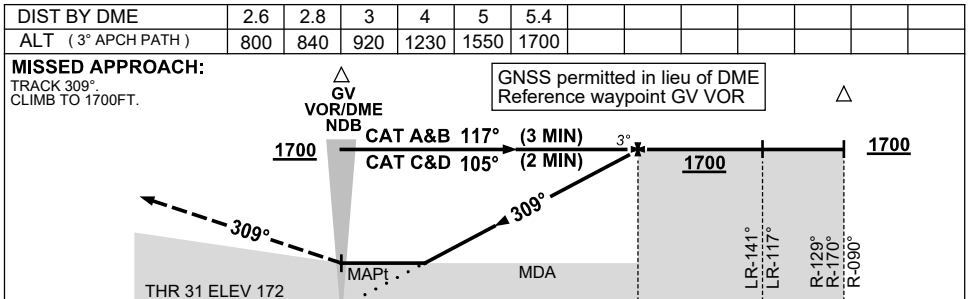
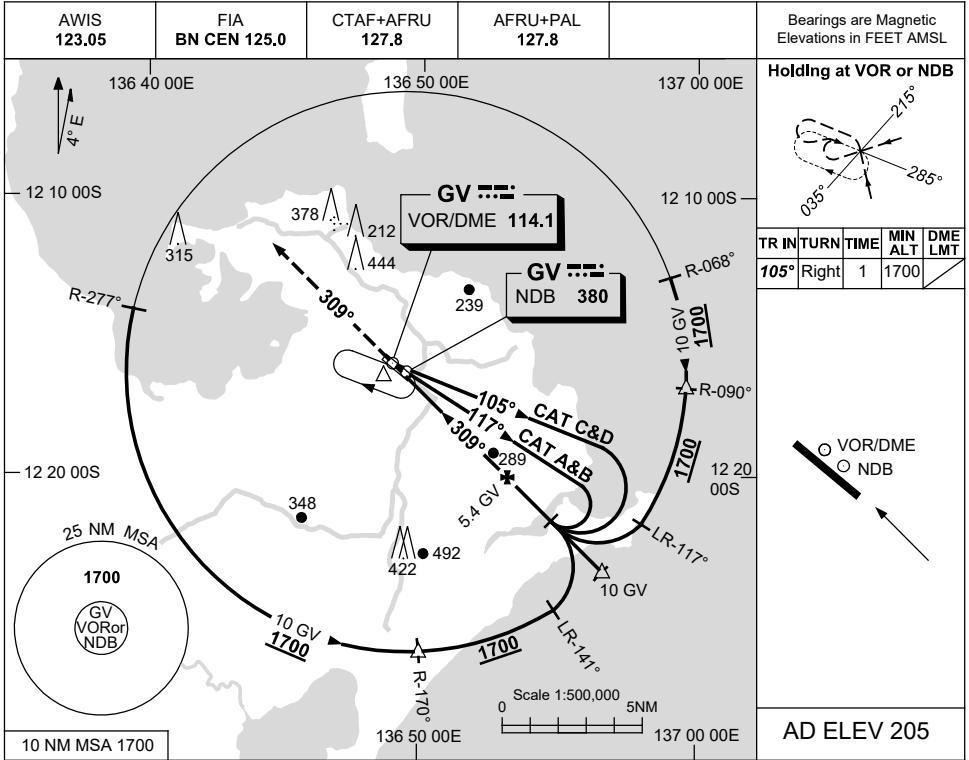
Changes: THR ELEV, Editorial.

PGVNB01-175

USE QNH

NDB or VOR RWY 31
GOVE, NT (YPGV)

15 JUN 2023



NOTES

1. MAX IAS:
INITIAL : 210KT.

CATEGORY	A	B	C	D
S-I VOR or NDB		840 (668-3.8)		
S-I WITH DME		800 (628-3.6)		
CIRCLING	840 (635-2.4)		940 (735-4.0)	1010 (805-5.0)
ALTERNATE	(1135-4.4)		(1235-6.0)	(1305-7.0)

Changes: THR ELEV, Editorial.

PGVNB02-175