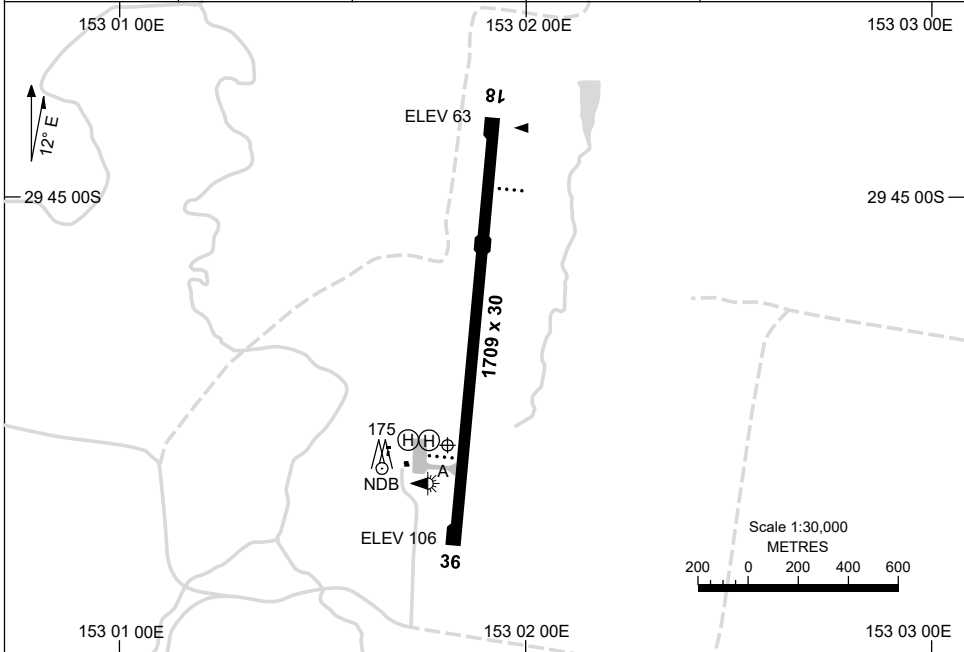


23 MAR 2023

AD ELEV 110  
29 45 34S 153 01 48E

**AERODROME CHART**  
**GRAFTON, NSW (YGFN)**

AWIS 126.225	FIA BN CEN 122.6	CTAF+AFRU 126.7	AFRU+PAL 126.7	Bearings are Magnetic Elevations in FEET AMSL
-----------------	---------------------	--------------------	-------------------	--



RWY	<b>AERODROME LIGHTING</b>	
	TAXIWAY :	BLUE EDGE
	RL :	AFRU+PAL 126.7 , SDBY PWR (15 SEC)
<b>18</b> <small>174</small>	PAPI 3.0°	42FT LIRL
<small>354</small> <b>36</b>	PAPI 3.0°	42FT LIRL

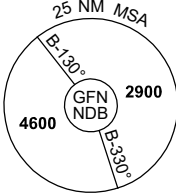
**NOTES**

Changes: TWY A, APRON AND HEL.

GFNAD01-174

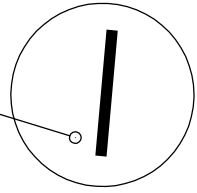
25 MAR 2021

AWIS 126.225	FIA BN CEN 122.6	CTAF+AFRU 126.7	AFRU+PAL 126.7		Bearings are Magnetic Elevations in FEET AMSL
-----------------	---------------------	--------------------	-------------------	--	--



**REFERENCE WAYPOINT GFN NDB**

**GFN NDB**  
389



10 NM MSA 2500

AD ELEV 110

**SECTOR A**

**MISSED APPROACH:**  
CLIMB ON TRACK TO 2500FT. PASSING 1500FT TURN RIGHT, TRACK DIRECT TO GFN NDB.

NM TO GFN NDB	25	20	15	13	6	3	0											
<b>CIRCLING MINIMA</b>				A,B: 780-2.4	C: 940-4.0		D: N/A											
NM TO GFN NDB	13.7	13	12	11	10	9	8	7	6	5	4	3	2.2	2	1.7			
ALT (3° APCH PATH)	4600	4380	4060	3750	3430	3110	2790	2470	2160	1840	1520	1200	940	880	780			

**SECTOR B**

**MISSED APPROACH:**  
CLIMB ON TRACK TO 2500FT. PASSING 1500FT TURN RIGHT, TRACK DIRECT TO GFN NDB.

NM TO GFN NDB	25	15	13	7	6	3	0											
<b>CIRCLING MINIMA</b>				A,B: 780-2.4	C: 940-4.0		D: N/A											
NM TO GFN NDB	6.9	6	5	4	3	2	1	0.6	0.1									
ALT (3° APCH PATH)	2900	2650	2330	2020	1700	1380	1060	940	780									

**SECTOR C**

**MISSED APPROACH:**  
CLIMB ON TRACK TO 2500FT. PASSING 2000FT TURN RIGHT, TRACK DIRECT TO GFN NDB.

NM TO GFN NDB	25	15	12	6	3	0												
<b>CIRCLING MINIMA</b>				A,B: 780-2.4	C: 940-4.0		D: N/A											
NM TO GFN NDB	12.7	12	11	10	9	8	7	6	5	4	3	2	1.2	1	0.7			
ALT (3° APCH PATH)	4600	4370	4050	3730	3410	3090	2770	2460	2140	1820	1500	1180	940	860	780			

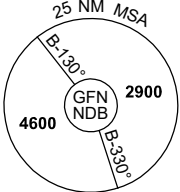
Changes: Editorial.

GFNDG01-166

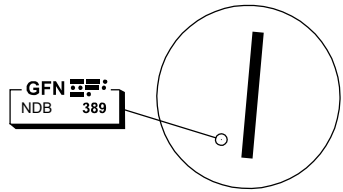
# GNSS ARRIVAL PROCEDURES GRAFTON, NSW (YGFN) Page 2

25 MAR 2021

AWIS 126.225	FIA BN CEN 122.6	CTAF+AFRU 126.7	AFRU+PAL 126.7		Bearings are Magnetic Elevations in FEET AMSL
-----------------	---------------------	--------------------	-------------------	--	--



**REFERENCE WAYPOINT GFTN NDB**



10 NM MSA 2500

AD ELEV 110

**SECTOR D**

**MISSED APPROACH:**

CLIMB ON TRACK TO 2500FT. PASSING 1500FT TURN RIGHT, TRACK DIRECT TO GFTN NDB.

NM TO GFTN NDB	25	18	15	10	7	6	3	0						
<b>CIRCLING MINIMA</b>	A,B: 850-2.4			C: 940-4.0			D: N/A							
NM TO GFTN NDB	14	13	12	11	10	9	8	7	6	5	4	3	2.5	2.2
ALT (3° APCH PATH)	4600	4280	3960	3650	3330	3010	2690	2370	2060	1740	1420	1100	940	850

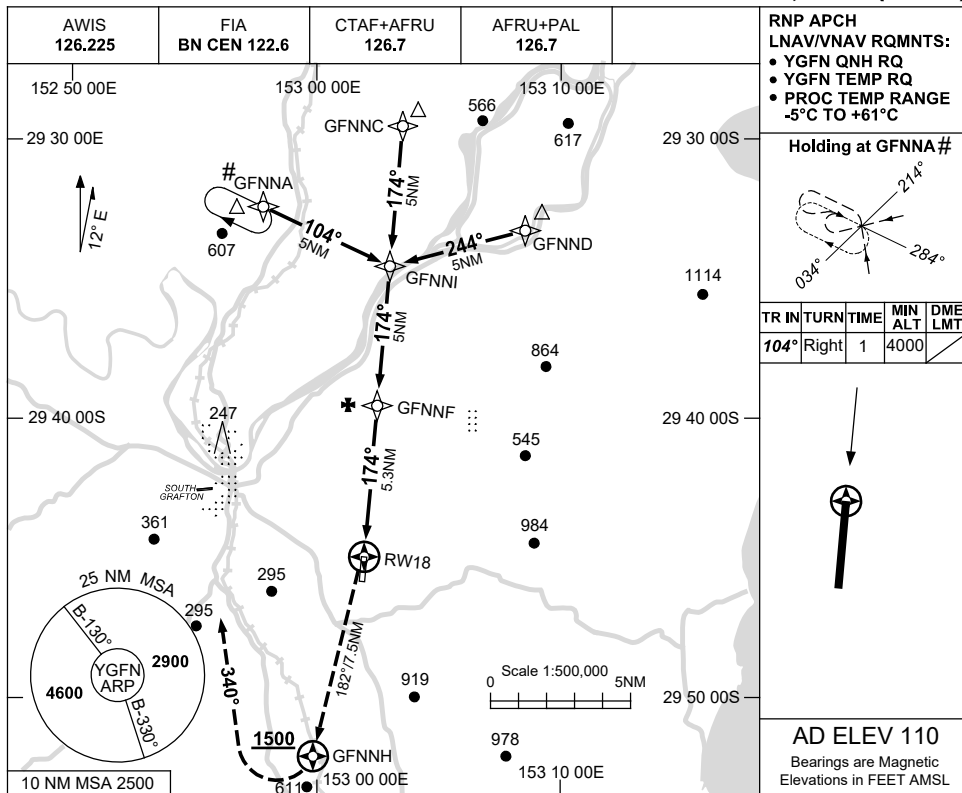
Changes: Editorial.

USE QNH

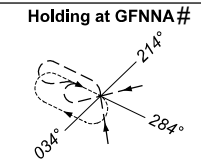
RNP RWY 18

GRAFTON, NSW (YGFN)

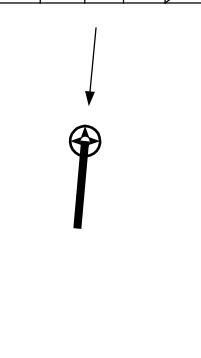
2 DEC 2021



RNP APCH  
LNAV/VNAV RQMTS:  
• YGFN QNH RQ  
• YGFN TEMP RQ  
• PROC TEMP RANGE  
-5°C TO +61°C

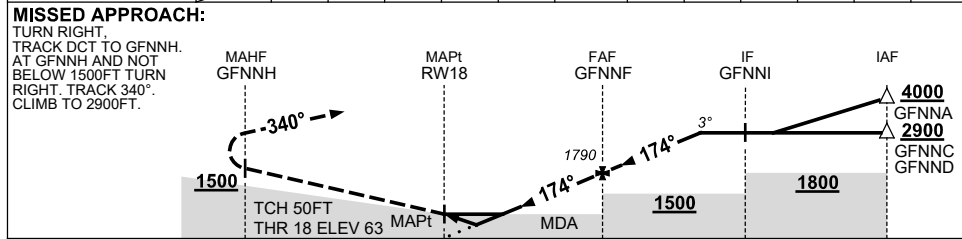


TR	IN	TURN	TIME	MIN ALT	DME LMT
104°	Right	1	4000		



AD ELEV 110  
Bearings are Magnetic  
Elevations in FEET AMSL

NM TO NEXT WPT	RW18	0.9	1.5	2	3	4	GFNNF	1	2	3	3.5		
ALT (3° APCH PATH)		400	600	750	1070	1390	1790	2110	2430	2750	2900		



NM TO RW18: 7.5, 0, 5.3, 10.3, 15.3

**NOTES**

CATEGORY	A	B	C	D
LNAV/VNAV		400 (337-1.9)		NOT APPLICABLE
LNAV		600 (537-3.0)		
CIRCLING	780 (670-2.4)		940 (830-4.0)	
ALTERNATE	(1170-4.4)		(1330-6.0)	

- MAX IAS:  
HOLDING: 210KT.  
INITIAL : 210KT.
- HOLDING OVERLAYS  
PROC AT YXMA,  
PRESCRIBED MINIMUM  
ALTITUDE ENSURES  
SEPARATION

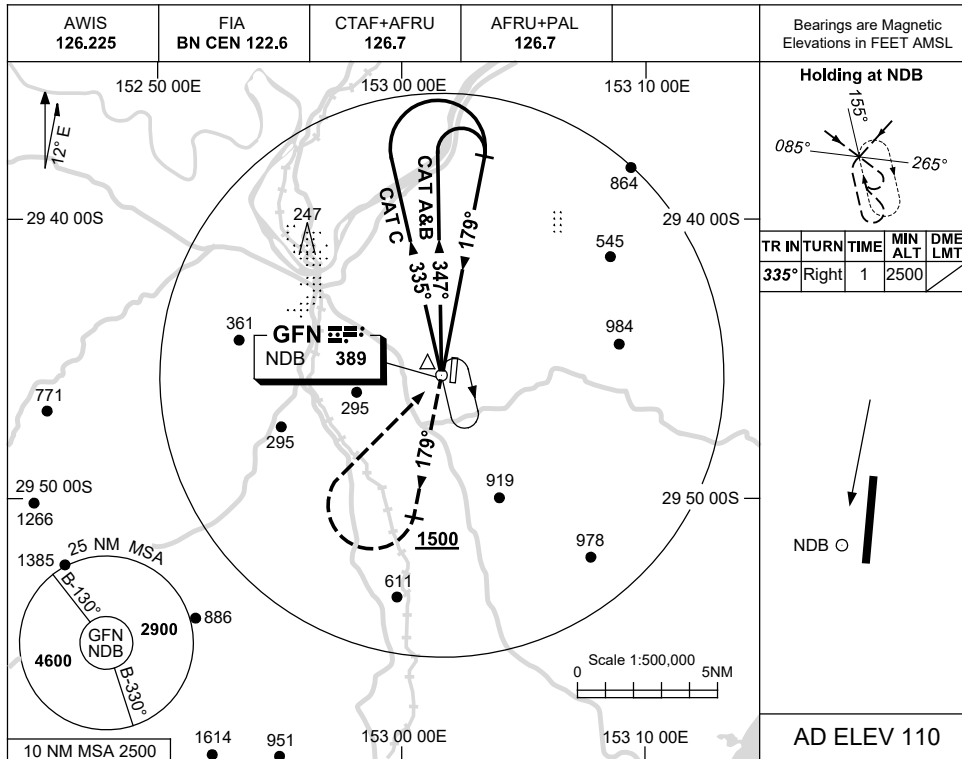
Changes: CHART TITLE, PBN SPECIFICATION BOX.

GFNGN01-169

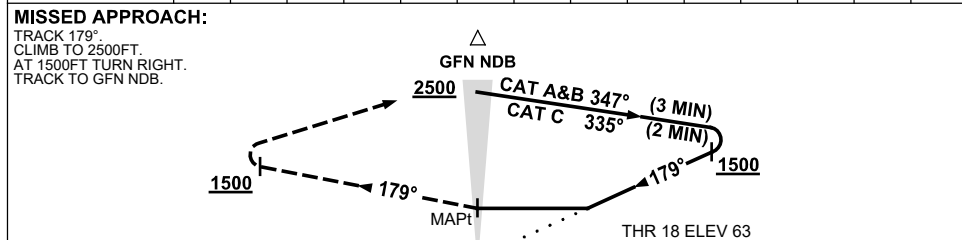
25 MAR 2021

USE QNH

NDB RWY 18  
GRAFTON, NSW (YGFN)



DME DIST	NOT APPLICABLE									
ALT										



**NOTES**

CATEGORY	A	B	C	D
S-I NDB	710 (647-3.7)			NOT APPLICABLE
CIRCLING	780 (670-2.4)	940 (830-4.0)		
ALTERNATE	(1170-4.4)		(1330-6.0)	

1. MAX IAS:  
 HOLDING: 210KT.  
 INITIAL:  
 CAT A&B 140KT.  
 CAT C 210KT.  
 MAP TURN: 210KT.

Changes: Editorial.

GFNNB01-166