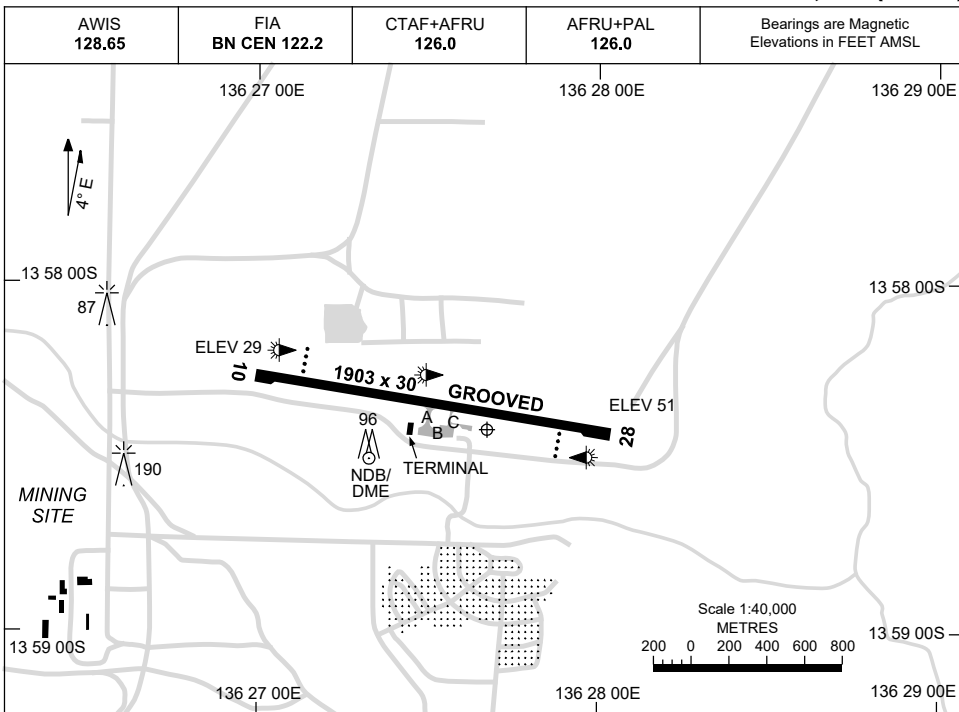


5 SEP 2024

AD ELEV 53
13 58 24S 136 27 39E

AERODROME CHART
GROOTE EYLANDT, NT (YGTE)



AERODROME LIGHTING	
RWY	RL : AFRU+PAL 126.0 , SDBY (30 SEC) , PTBL (90 MIN PN)
10 <small>095</small>	PAPI 3.0° 41FT LIRL PTBL
<small>275</small> 28	PAPI 3.0° 41FT LIRL PTBL

NOTES

1. AWIS ACTIVATED BY 1 SEC TRANSMISSION.

Changes: THR ELEV.

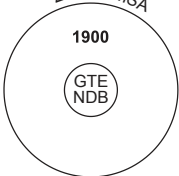
GTEAD01-180

DME or GNSS ARRIVAL PROCEDURES GROOTE EYLANDT, NT (YGTE)

15 AUG 2019

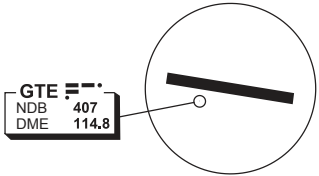
AWIS 128.65	FIA BN CEN 122.2	CTAF+AFRU 126.0	AFRU+PAL 126.0		Bearings are Magnetic Elevations in FEET AMSL
-----------------------	---------------------	---------------------------	--------------------------	--	--

25 NM MSA



10 NM MSA 1900

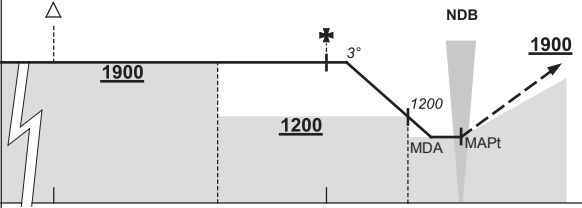
**DME USING GTE DME
REFERENCE WAYPOINT GTE NDB**



GTE
NDB 407
DME 114.8

AD ELEV 53

**ALL ROUTES
TO
GTE NDB**



MISSED APPROACH:
CLIMB ON TRACK
TO 1900FT.

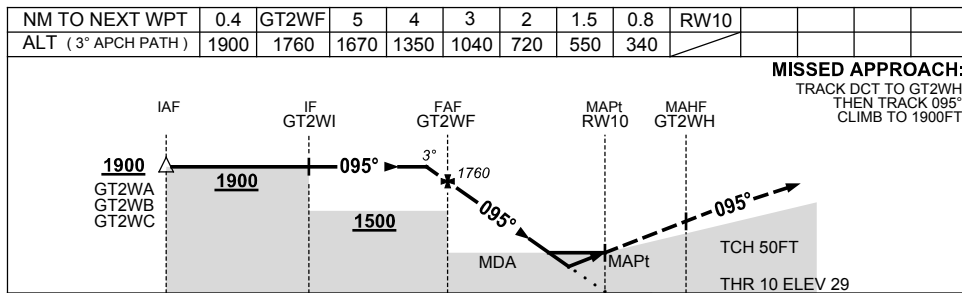
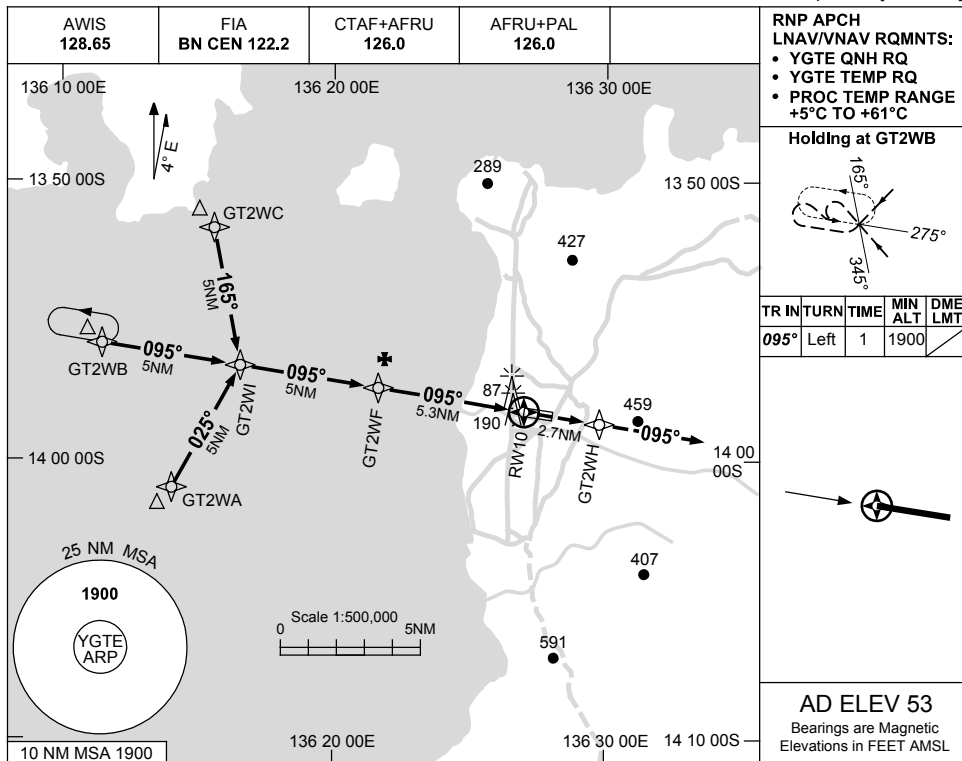
NM TO GTE NDB	25	15	9	5	2	0															
CIRCLING MINIMA	A,B: 910-2.4			C: 1070-4.0		D: N/A															
NM TO GTE NDB	4.2	4	3	2	1.6	1.1															
ALT (3° APCH PATH)	1900	1830	1520	1200	1070	910															

USE QNH

RNP RWY 10

5 SEP 2024

GROOTE EYLANDT, NT (YGTE)



NOTES

CATEGORY	A	B	C	D
LNAV/VNAV	340 (311-1.7)			NOT APPLICABLE
LNAV	550 (521-2.9)			
CIRCLING	910 (857-2.4)		1070 (1017-4.0)	
ALTERNATE	(1357-4.4)		(1517-6.0)	

1. MAX IAS: INITIAL : 210KT.

Changes: THR ELEV, MDH, WPT NAMING CONVENTION.

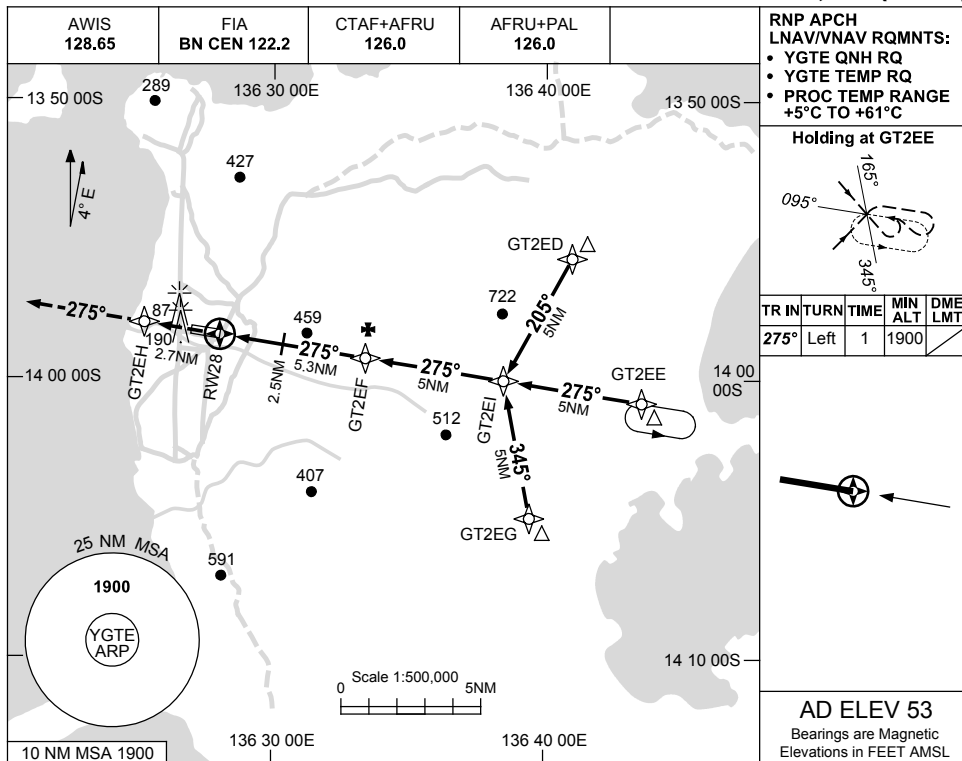
GTEGN01-180

USE QNH

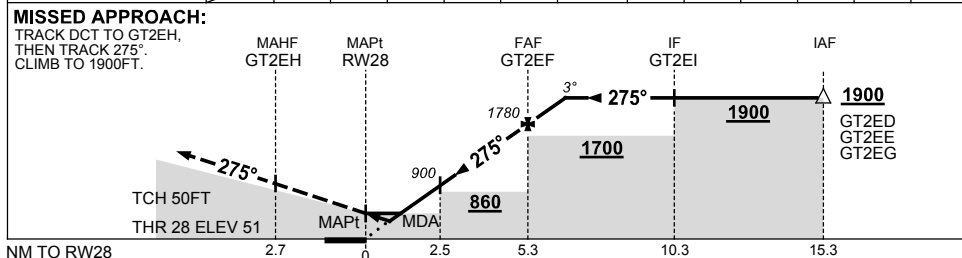
RNP RWY 28

5 SEP 2024

GROOTE EYLANDT, NT (YGTE)



NM TO NEXT WPT	RWY28	1.6	2.4	2.5	3	4	GT2EF	0.4			
ALT (3° APCH PATH)		600	860	900	1060	1370	1780	1900			



NOTES

CATEGORY	A	B	C	D
LNAV/VNAV		600 (549-3.1)		NOT APPLICABLE
LNAV		860 (807-4.6)		
CIRCLING	910 (857-2.4)		1070 (1017-4.0)	
ALTERNATE	(1357-4.4)		(1517-6.0)	

1. MAX IAS:
INITIAL : 210KT.

Changes: WPT NAMING CONVENTION, Editorial.

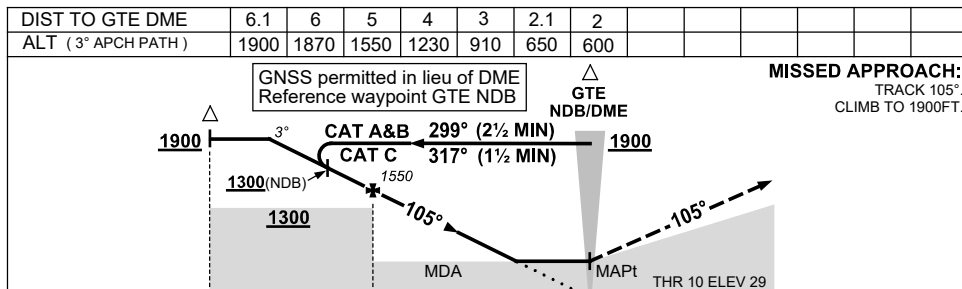
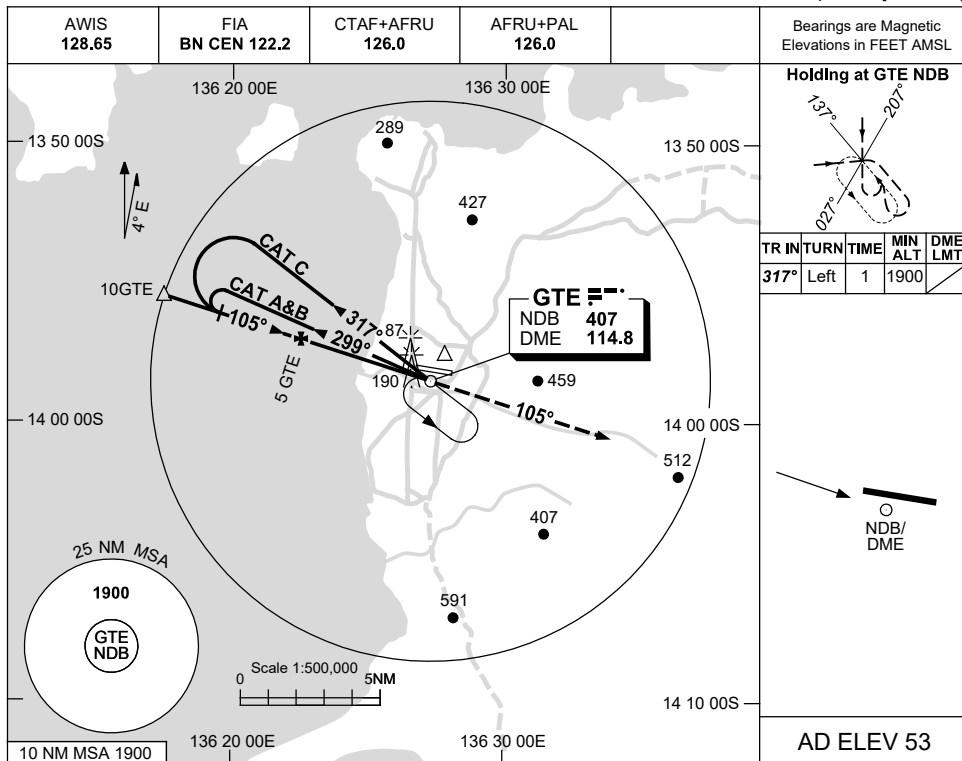
GTEGN02-180

USE QNH

NDB RWY 10

5 SEP 2024

GROOTE EYLANDT, NT (YGTE)



MISSED APPROACH:
TRACK 105°. CLIMB TO 1900FT.

CATEGORY	A	B	C	D
S-I NDB		650 (621-3.5)		NOT APPLICABLE
S-I NDB/DME		600 (571-3.2)		
CIRCLING	910 (857-2.4)		1070 (1017-4.0)	
ALTERNATE	(1357-4.4)		(1517-6.0)	

1. MAX IAS:
INITIAL : 210KT.

Changes: THR ELEV, MINIMA.

GTEB01-180