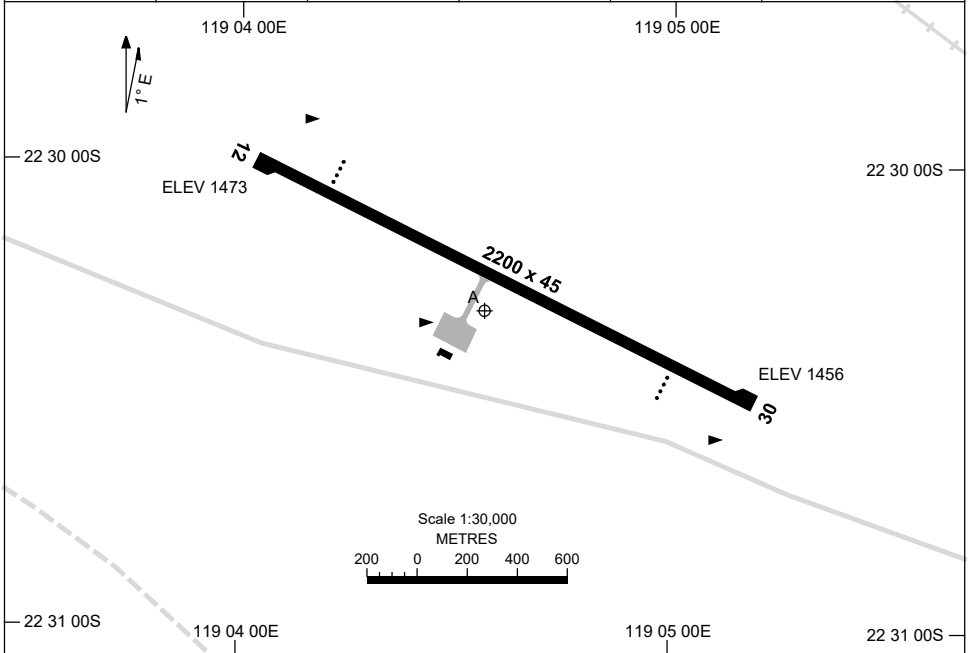


15 JUN 2023

AD ELEV 1473
22 30 19S 119 04 34E

AERODROME CHART
GUDAI-DARRI MINE, WA (YKDD)

AWIS 133.35	FIA ML CEN 128.15	CTAF+AFRU 127.05	PAL+AA 119.6		Bearings are Magnetic Elevations in FEET AMSL
----------------	----------------------	---------------------	-----------------	--	--



RWY	AERODROME LIGHTING	
	RL : PAL+AA 119.6 , SDBY (10 SEC)	
12 ¹¹⁴	PAPI 3.0° 54FT PTBL	
²⁹⁴ 30	PAPI 3.0° 54FT PTBL	

NOTES

1. PAL+AA REQUIRES THREE THREE-SEC PULSES TO ACTIVATE. AVBL HJ ONLY.
2. AFRU SIGNAL NOT AVBL ON GROUND. AFRU LOCATED AT FORTESCUE DAVE FORREST (YDFD).
3. FIA FREQ 128.15 AVBL IN CIRCUIT AREA.
4. AWIS RQ THREE ONE-SECOND PULSES TO ACTIVATE.
5. RWY12/30 PTBL LIGHTING AVBL FOR EMERG (MERCY FLIGHTS) ONLY. 2HR PN WITH ARO.

Changes: UNICOM DELETED.

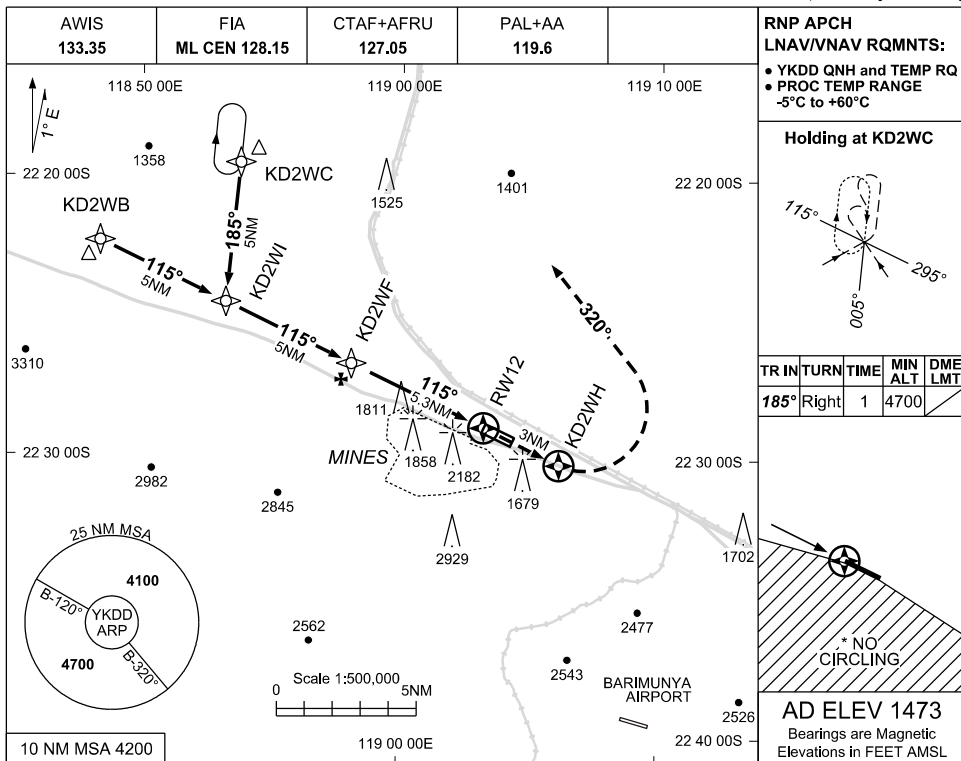
KDDAD01-175

USE QNH

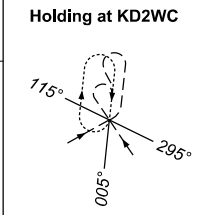
RNP RWY 12

30 NOV 2023

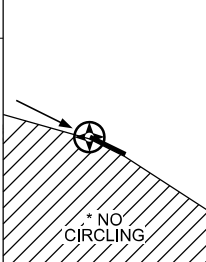
GUDAI-DARRI MINE, WA (YKDD)



**RNP APCH
LNAV/VNAV RQMNTS:**
 • YKDD QNH and TEMP RQ
 • PROC TEMP RANGE
 -5°C to +60°C

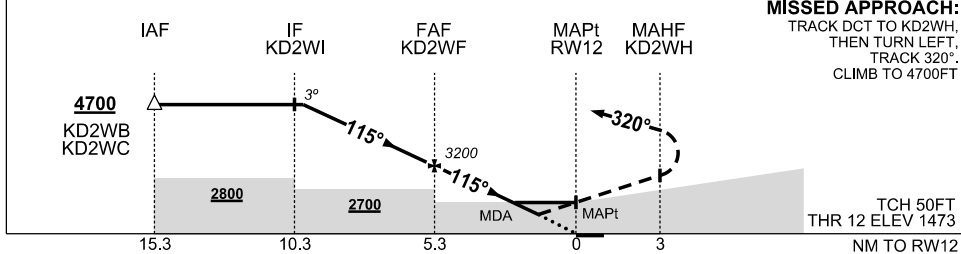


TR IN	TURN	TIME	MIN ALT	DME LMT
185°	Right	1	4700	



AD ELEV 1473
 Bearings are Magnetic
 Elevations in FEET AMSL

NM TO NEXT WPT	4.7	4	3	2	1	KD2WF	4	3	2	1.7	1.0	RW12
ALT (3° APCH PATH)	4700	4470	4160	3840	3520	3200	2800	2480	2160	2070	1840	



NOTES

- MAX IAS:
HOLDING: 200KT
INITIAL: 210KT
MAP TURN: 210KT
- NO CIRCLING
S OF RWY 12/30
- CAUTION: YBRY
PROCS ADJACENT TO S.
YFDF AND YCHK
PROCS ADJACENT TO NE.

CATEGORY	A	B	C	D
LNAV/VNAV		1840 (367-2.1)		
LNAV		2070 (597-3.4)		
* CIRCLING	2080 (607-2.4)		2210 (737-4.0)	2270 (797-5.0)
ALTERNATE	(1107-4.4)		(1237-6.0)	(1297-7.0)

Changes: CHART TITLE, EDITORIAL

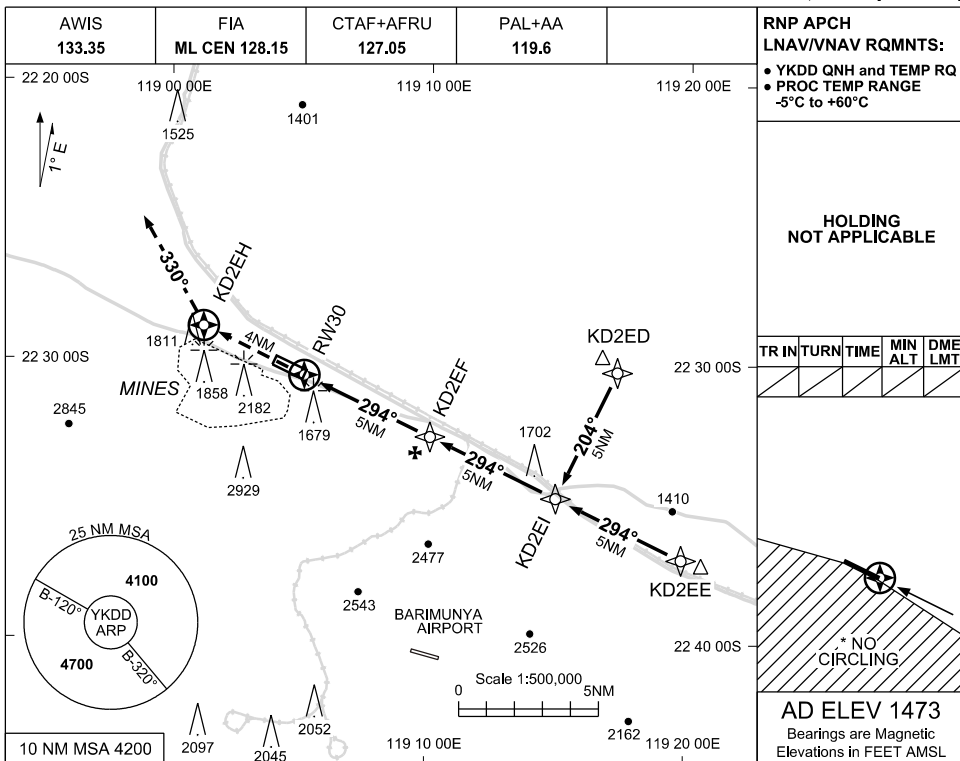
KDDGN01-177

USE QNH

RNP RWY 30

30 NOV 2023

GUDAI-DARRI MINE, WA (YKDD)



RNP APCH LNAV/VNAV RQMNTS:

- YKDD QNH and TEMP RQ
- PROC TEMP RANGE -5°C to +60°C

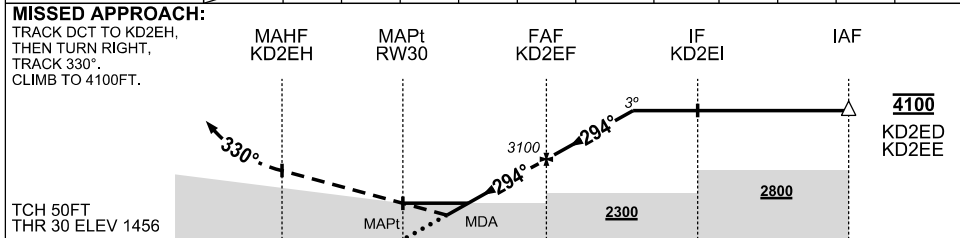
HOLDING NOT APPLICABLE

TR	IN	TURN	TIME	MIN ALT	DME LMT
/	/	/	/	/	/

*** NO CIRCLING**

AD ELEV 1473
Bearings are Magnetic
Elevations in FEET AMSL

NM TO NEXT WPT	RW30	1.0	1.7	2	3	4	KD2EF	1	2	3.1		
ALT (3° APCH PATH)		1820	2050	2140	2460	2780	3100	3420	3740	4100		



NOTES

1. MAX IAS: INITIAL : 210KT
2. NO CIRCLING S OF RWY 12/30
3. CAUTION: YBRY PROCS ADJACENT TO S. YDFD PROCS ADJACENT TO NE. PROC OVERLAID BY YCHK PROCS. PRESCRIBED ALTS ENSURE SEPARATION.

CATEGORY	A	B	C	D
LNAV/VNAV		1820 (364-2.0)		NOT AUTHORISED
LNAV		2050 (594-3.4)		
* CIRCLING	2080 (607-2.4)		2210(737-4.0)	
ALTERNATE	(1107-4.4)		(1237-6.0)	

Changes: CHART TITLE, EDITORIAL

KDDGN02-177