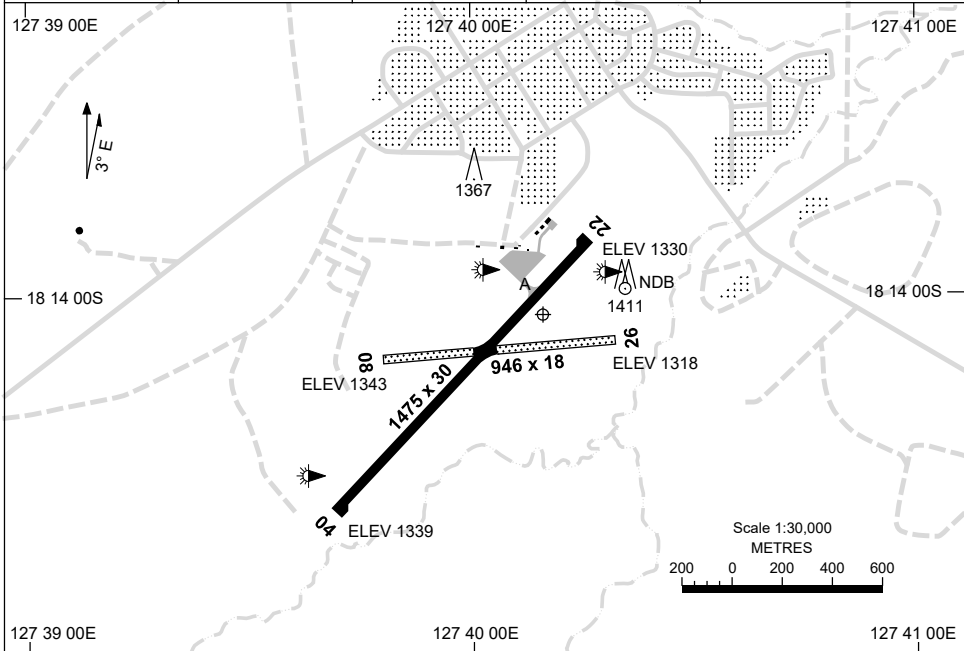


5 SEP 2024

AD ELEV 1346  
18 14 02S 127 40 11E

**AERODROME CHART**  
**HALLS CREEK, WA (YHLC)**

FIA BN CEN 118.2	CTAF+AFRU 126.7	AFRU+PAL 126.7	Bearings are Magnetic Elevations in FEET AMSL
---------------------	--------------------	-------------------	--



RWY		AERODROME LIGHTING
		TAXIWAY : BLUE EDGE RL : AFRU+PAL 126.7
<b>04</b> <small>041</small>	LIRL	
<small>221</small> <b>22</b>	LIRL	
<b>08</b> <small>083</small>	NIL	
<small>263</small> <b>26</b>	NIL	

**NOTES**

1. AWIS (PHONE) 08 6216 2617

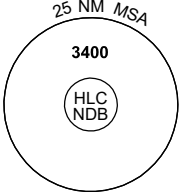
Changes: RWY 08 THR ELEV, Editorial.

HLCAD01-180

# GNSS ARRIVAL PROCEDURES HALLS CREEK, WA (YHLC)


15 AUG 2019

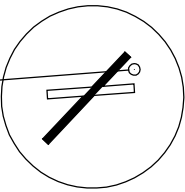
FIA BN CEN 118.2	CTAF+AFRU 126.7	AFRU+PAL 126.7		Bearings are Magnetic Elevations in FEET AMSL
---------------------	--------------------	-------------------	--	--



25 NM MSA  
3400  
HLC NDB

**REFERENCE WAYPOINT HLC NDB**  
AWIS (PHONE) 08 6216 2617

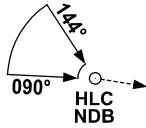


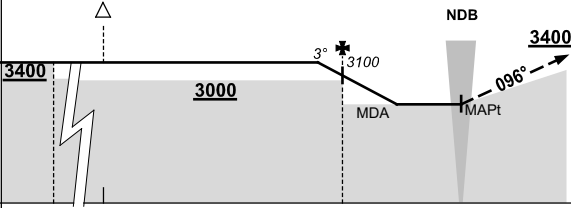


10 NM MSA 3400

AD ELEV 1346

**SECTOR A**

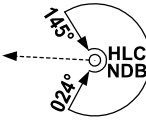


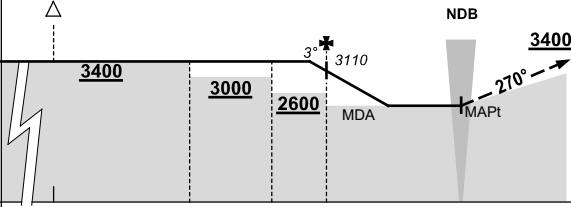


**MISSED APPROACH:**  
TURN AS APPROPRIATE,  
TRACK 096°. CLIMB TO 3400FT.

NM TO HLC NDB	25	22	15	5	0												
<b>CIRCLING MINIMA</b>	A,B: 2350-2.4		C: 2450-4.0		D: N/A												
NM TO HLC NDB	6	5	4	3	2.7												
ALT (3° APCH PATH)	3400	3100	2780	2460	2350												

**SECTOR B**

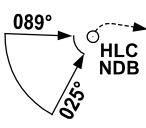


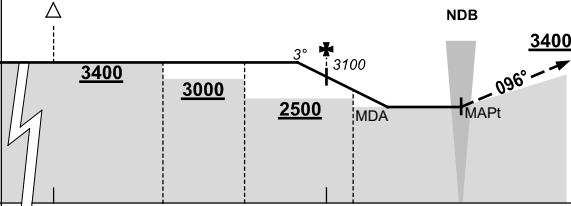


**MISSED APPROACH:**  
TURN AS APPROPRIATE,  
TRACK 270°. CLIMB TO 3400FT.

NM TO HLC NDB	25	15	10	7	5	0											
<b>CIRCLING MINIMA</b>	A,B: 2360-2.4		C: 2450-4.0		D: N/A												
NM TO HLC NDB	5.6	5	4	3	2.7												
ALT (3° APCH PATH)	3400	3110	2790	2470	2360												

**SECTOR C**





**MISSED APPROACH:**  
TURN RIGHT,  
TRACK 096°. CLIMB TO 3400FT.

NM TO HLC NDB	25	15	11	8	5	4	0										
<b>CIRCLING MINIMA</b>	A,B: 2350-2.4		C: 2450-4.0		D: N/A												
NM TO HLC NDB	6	5	4	3	2.7												
ALT (3° APCH PATH)	3400	3100	2780	2460	2350												

Changes: AWIS PHONE, Editorial.

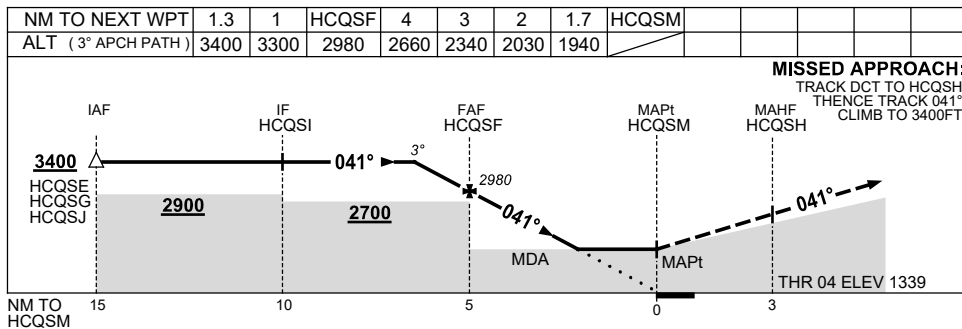
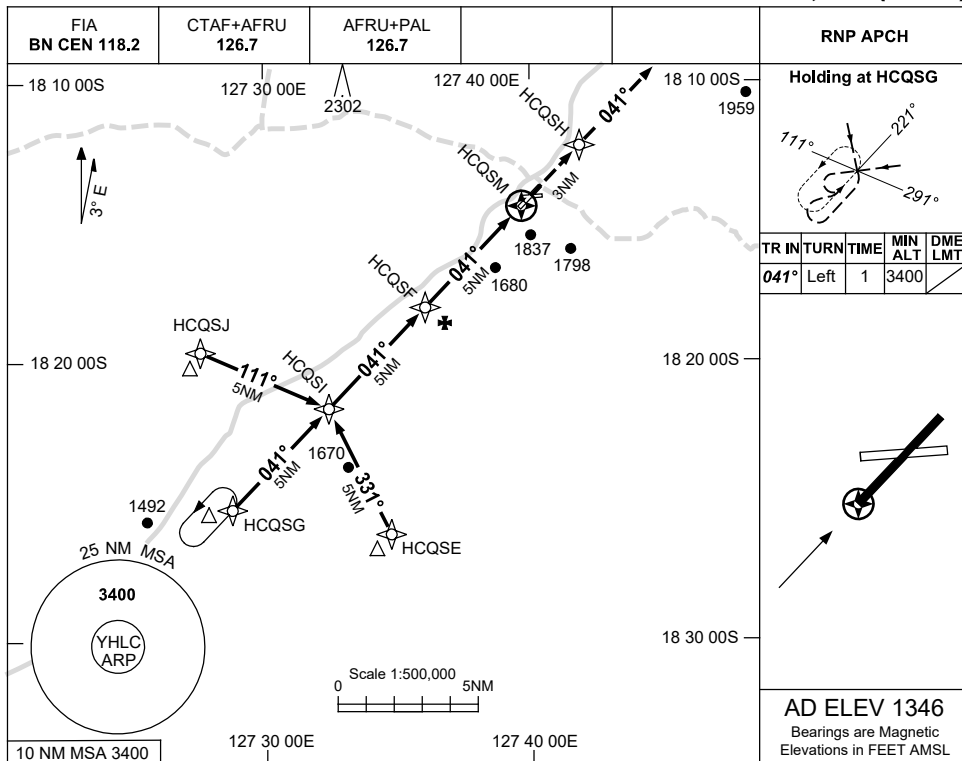
HLCDG01-160

USE QNH

RNP RWY 04

HALLS CREEK, WA (YHLC)

8 SEP 2022



**NOTES**

CATEGORY	A	B	C	D
LNAV	1940 (594-3.4)			NOT APPLICABLE
CIRCLING	2350 (1004-2.4)	2450 (1104-4.0)		
ALTERNATE	(1504-4.4)	(1604-6.0)		

- MAX IAS:  
INITIAL : 210KT.
- AWIS (PHONE)  
08 6216 2617

Changes: CHART TITLE, PBN SPECIFICATION BOX.

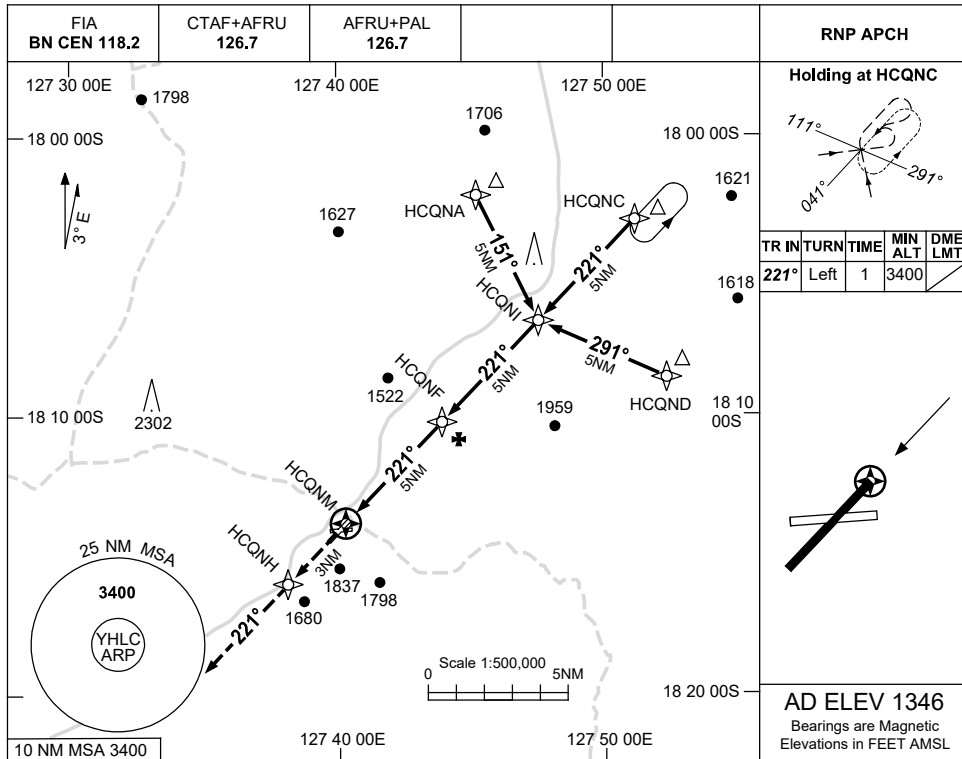
HLCGN01-172

USE QNH

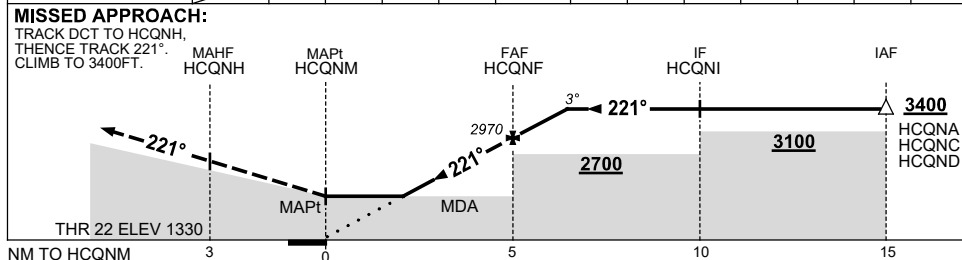
RNP RWY 22

HALLS CREEK, WA (YHLC)

23 MAR 2023



NM TO NEXT WPT	HCQNM	1.9	2	3	4	HCQNF	1	1.3				
ALT (3° APCH PATH)	1980	2020	2340	2650	2970	3290	3400					



**NOTES**

- MAX IAS: INITIAL : 210KT.
- AWIS (PHONE) 08 6216 2617

CATEGORY	A	B	C	D
LNAV	1980 (650-3.7)			NOT APPLICABLE
CIRCLING	2350 (1004-2.4)	2450 (1054-4.0)		
ALTERNATE	(1504-4.4)		(1604-6.0)	

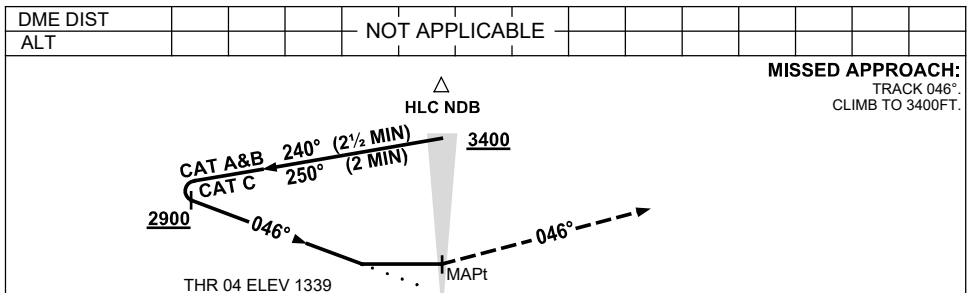
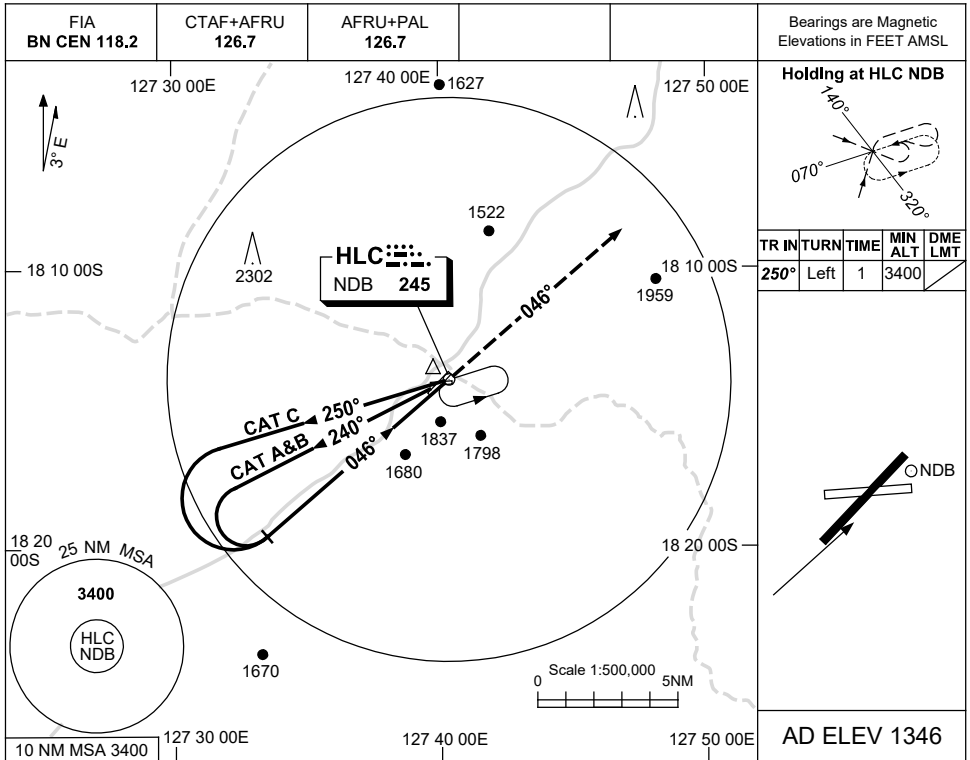
Changes: MISSED APPROACH WAYPOINT.

HLCGN02-174

USE QNH

NDB RWY 04  
HALLS CREEK, WA (YHLC)

24 MAR 2022



**NOTES**

CATEGORY	A	B	C	D
S-I NDB	2220 (874-5.0)			NOT APPLICABLE
CIRCLING	2350 (1004-2.4)	2450 (1104-4.0)		
ALTERNATE	(1504-4.4)	(1604-6.0)		

1. MAX IAS:  
INITIAL :  
CAT A&B 140KT.  
CAT C 210KT.
2. AWIS (PHONE)  
08 6216 2617

Changes: THR ELEV.

HLCNB01-170

