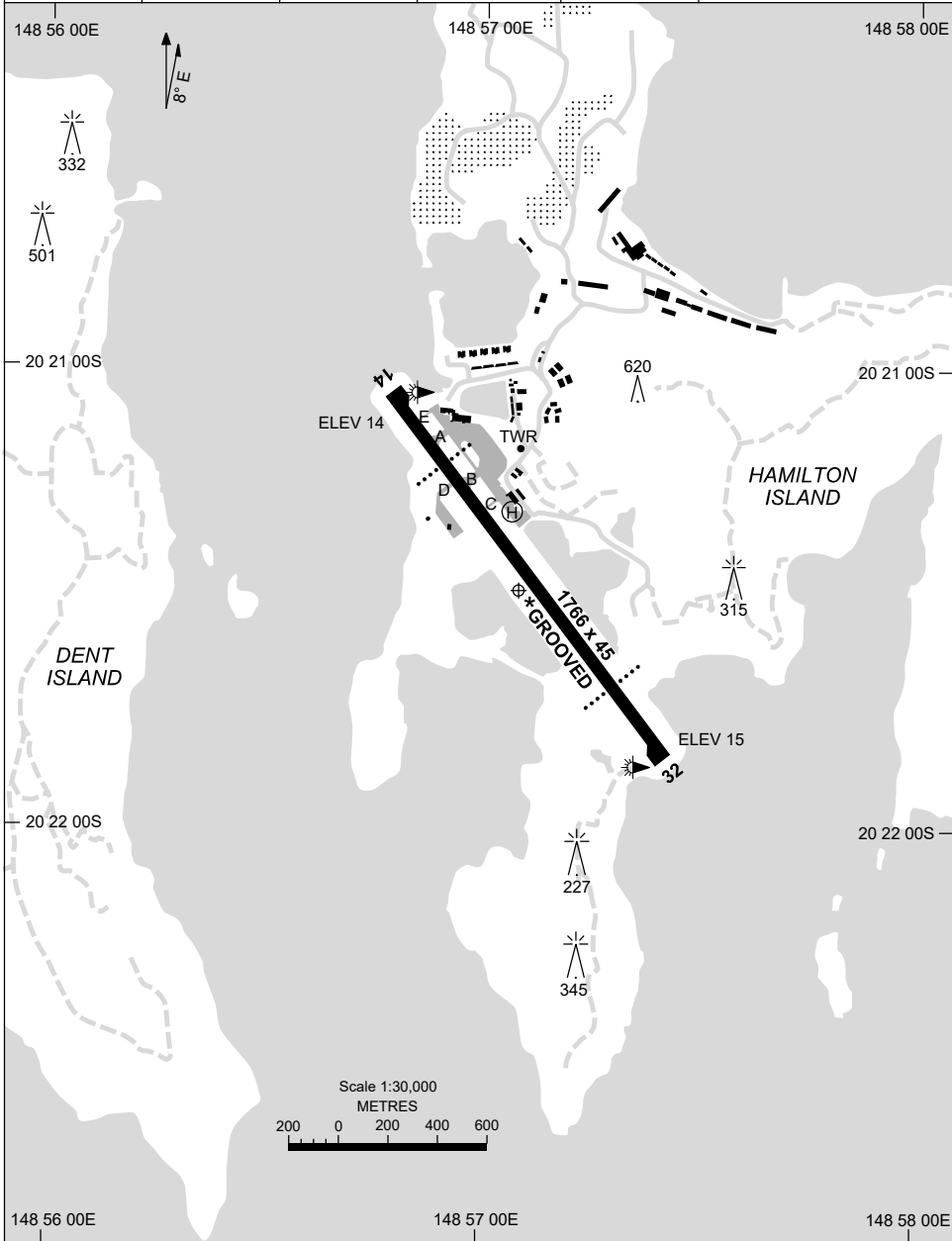


AD ELEV 15
20 21 29S 148 57 06E

AERODROME CHART - Page 1
HAMILTON ISLAND, QLD (YBHM)

1 DEC 2022

| | | | | | |
|----------------|----------------|--------------|--------------------------|--------------------------|--|
| AWIS 124.75 | ATIS 128.35 | TWR 118.7 | CTAF+AFRU (AH) 127.85 | FIA (AH) BN CEN 135.5 | Bearings are Magnetic Elevations in FEET AMSL |
|----------------|----------------|--------------|--------------------------|--------------------------|--|



Changes: THR 14 ELEV.

BHMAD01-173

30 NOV 2023

AD ELEV 15
20 21 29S 148 57 06E

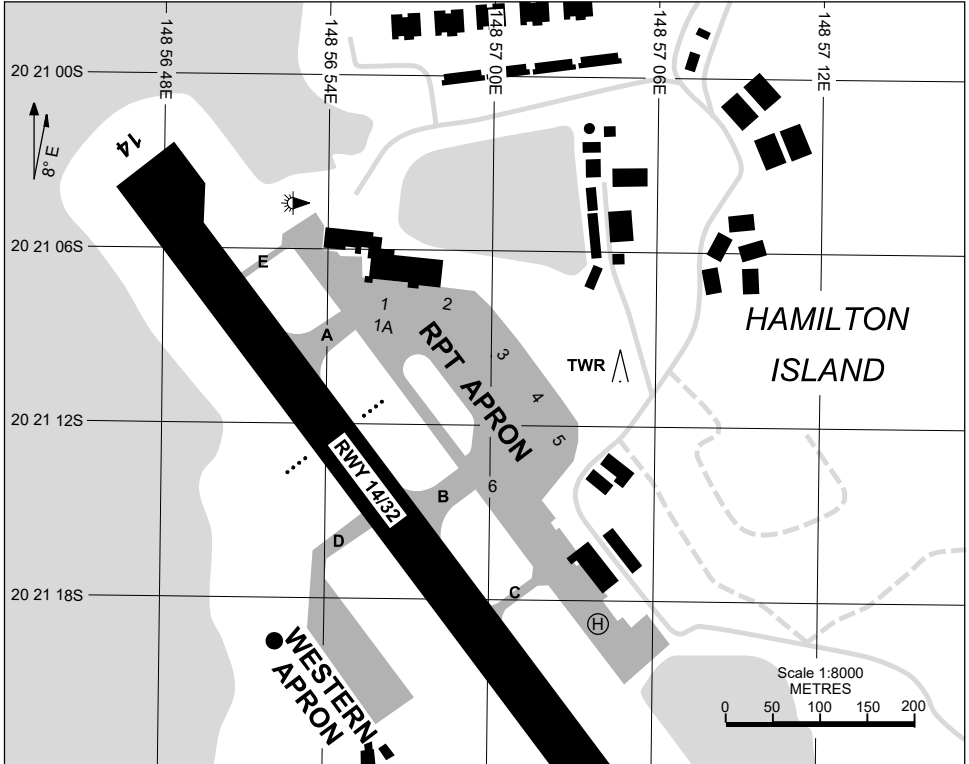
AERODROME CHART - Page 2
HAMILTON ISLAND, QLD (YBHM)

| | | | | | |
|--|---|--------------|--------------------------|--------------------------|--|
| AWIS 124.75 | ATIS 128.35 | TWR 118.7 | CTAF+AFRU (AH) 127.85 | FIA (AH) BN CEN 135.5 | Bearings are Magnetic Elevations in FEET AMSL |
| | | | | | |
| RWY | AERODROME LIGHTING | | | | |
| | TAXIWAY : BLUE EDGE TWY A, B ONLY RL : MAN (PN)** , SDBY (60 SEC) , : PTBL FIXED WING ACFT ONLY (EMERG ONLY, 60 MIN PN, CTC ARO: 0414 594 592) | | | | |
| 14 ¹³⁵ ₃₁₅ 32 | PAPI BOTH SIDES 3.0° 47FT MIRL (PN)** PAPI BOTH SIDES 3.0° 48FT MIRL (PN)** | | | | |
| <p>NOTES</p> <ul style="list-style-type: none"> * 1. RWY GROOVED FULL WIDTH. ** 2. MAN SWITCH BY AD OPR. 3. FIA FREQ 135.5 AVBL CIRCUIT AREA. 4. AWIS REQUIRES 2 SEC TRANSMIT PULSES TO ACTIVATE. | | | | | |

Changes: PTBL LIGHTING, NOTE 1 REMOVED, Editorial.

BHMAD02-177

13 JUN 2024



PARKING POSITION INFORMATION

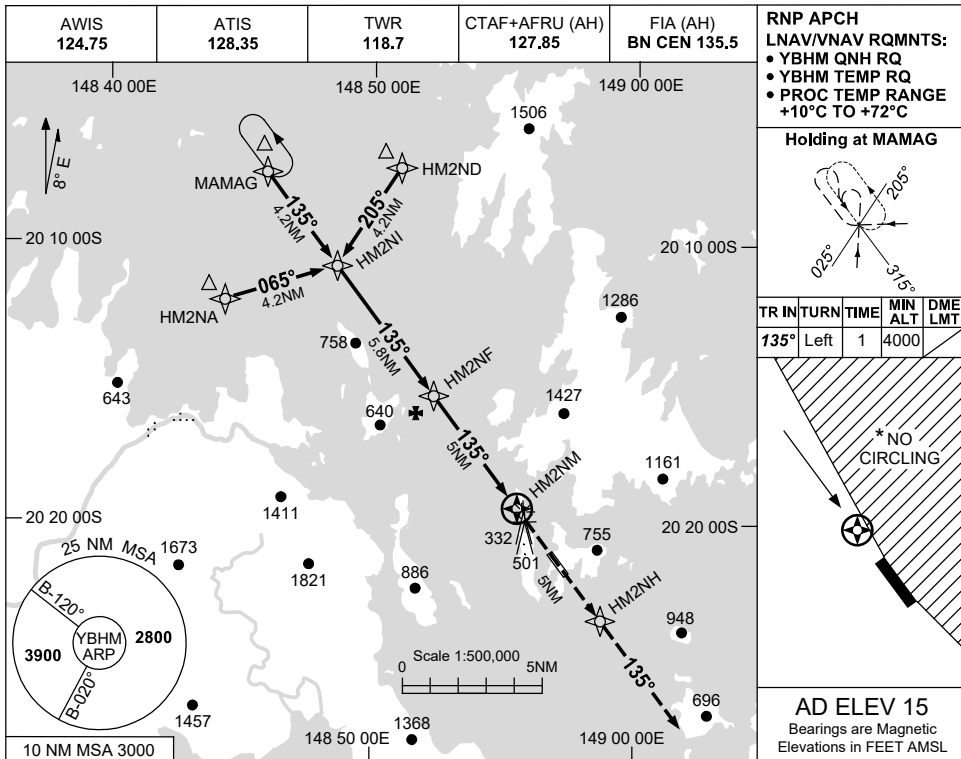
| STAND | CO-ORDINATES | ELEV (ft) | CAPACITY | HYDRANT FUEL | DOCKING SYSTEM |
|-------|----------------------------|-----------|-----------|--------------|----------------|
| 1 | 20 21 07.91S 148 56 56.11E | 15 | A20N/B38M | NIL | MARSHALLER |
| 1A | 20 21 08.58S 148 56 56.07E | 15 | A20N/B38M | NIL | MARSHALLER |
| 2 | 20 21 07.93S 148 56 58.41E | 15 | A20N/B38M | NIL | MARSHALLER |
| 3 | 20 21 09.55S 148 57 00.45E | 15 | A20N/B38M | NIL | MARSHALLER |
| 4 | 20 21 11.10S 148 57 01.69E | 15 | A20N/B38M | NIL | MARSHALLER |
| 5 | 20 21 12.53S 148 57 02.43E | 15 | A20N/B38M | NIL | MARSHALLER |
| 6 | 20 21 14.04S 148 57 00.13E | 15 | GLF5 | NIL | MARSHALLER |

USE QNH

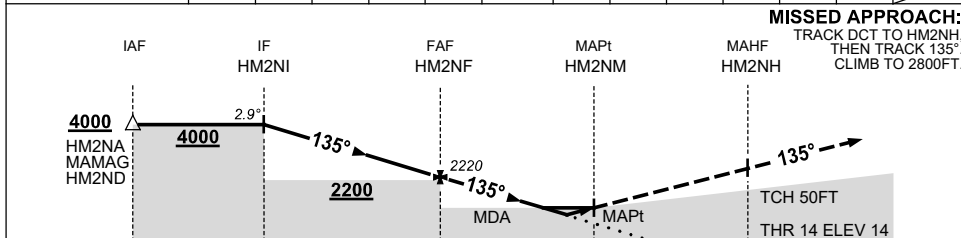
RNP Z RWY 14

15 JUN 2023

HAMILTON ISLAND, QLD (YBHM)



| | | | | | | | | | | | | | |
|----------------------|-------|------|------|------|------|-------|------|------|------|-----|-----|-----|-------|
| NM TO NEXT WPT | HM2NI | 4 | 3 | 2 | 1 | HM2NF | 4 | 3 | 2 | 1 | 0.5 | 0.2 | HM2NM |
| ALT (2.9° APCH PATH) | 4000 | 3450 | 3140 | 2830 | 2530 | 2220 | 1910 | 1600 | 1300 | 990 | 830 | 740 | |



NOTES

| CATEGORY | A | B | C | D |
|------------|-----------------|-----------------|-----------------------|---|
| LNAV/VNAV | 740 (726-4.3) | | | |
| LNAV | 830 (815-4.8) | | | |
| CIRCLING * | 1040 (1025-2.4) | 1140 (1125-4.0) | 1490 (1475-5.0) | |
| ALTERNATE | (1525-4.4) | | (1625-6.0) (1975-7.0) | |

1. MAX IAS: INITIAL : 210KT.
- * 2. NO CIRCLING EAST OF RWY 14/32.

Changes: FROM SUP H05/23.

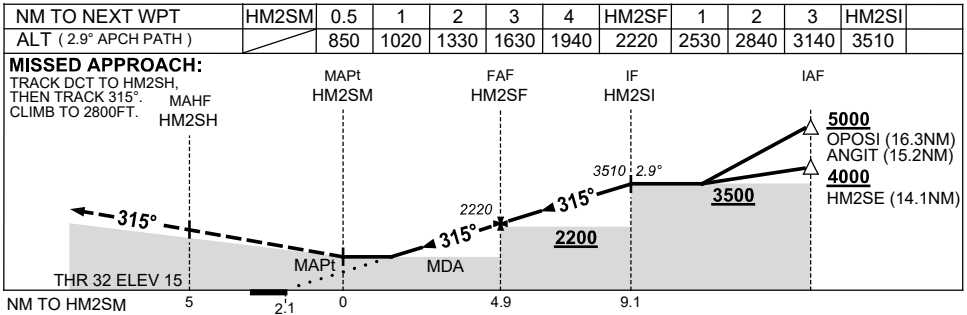
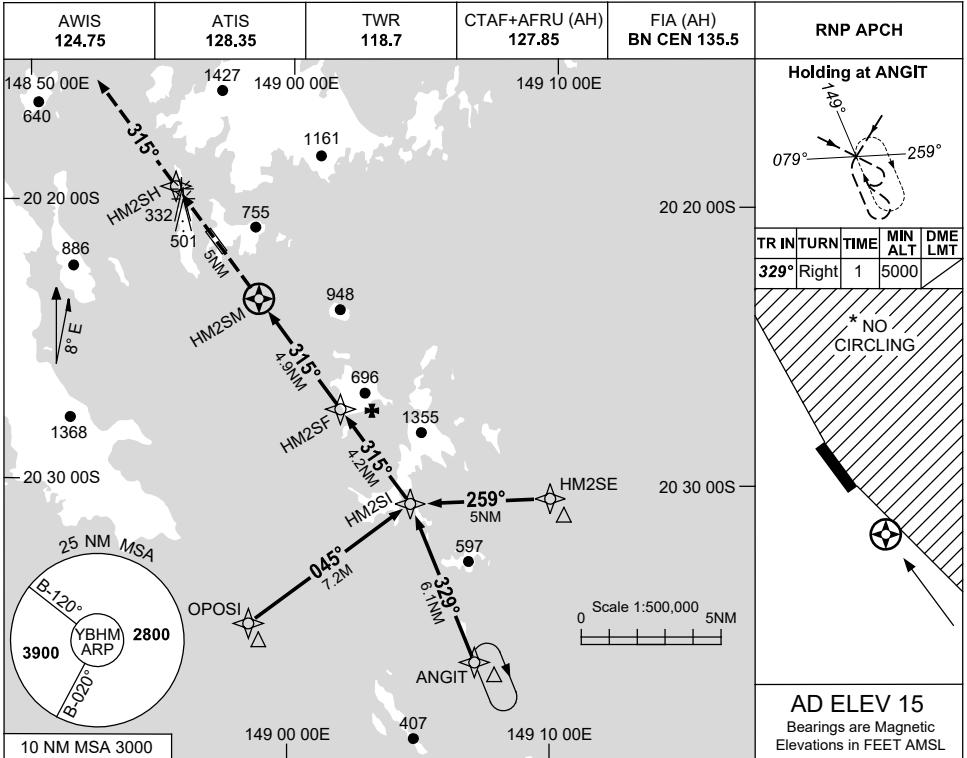
BHMGNO1-175

USE QNH

RNP Z RWY 32

15 JUN 2023

HAMILTON ISLAND, QLD (YBHM)



NOTES

1. MAX IAS: INITIAL : 210KT.
- * 2. NO CIRCLING EAST OF RWY 14/32.

| CATEGORY | A | B | C | D |
|-----------|------------------------|---|------------------------|---|
| LNAV | 850 (835-4.9) | | | |
| CIRCLING* | 1040 (1025-2.4) | | 1140 (1125-4.0) | |
| ALTERNATE | (1525-4.4) | | (1975-7.0) | |

Changes: FROM SUP H05/23.

BHMGNO2-175

FOR CASA APPROVED
OPERATORS ONLY

24 MAR 2022

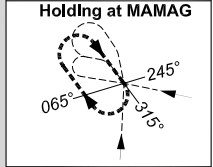
USE QNH

HAMILTON ISLAND, QLD (YBHM)

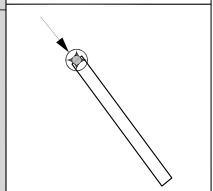
GE PROPRIETARY INFORMATION

| | | | | | |
|-----------------------|---------------------|---------------------------------|-----------------------|---------------------------------|-------------------------|
| ATIS 128.35 | TWR 118.7 | FIA (AH) BN CEN 135.5 | AWIS 124.75 | CTAF+AFRU (AH) 127.85 | RNP P 14 THR ELEV 14 |
|-----------------------|---------------------|---------------------------------|-----------------------|---------------------------------|-------------------------|

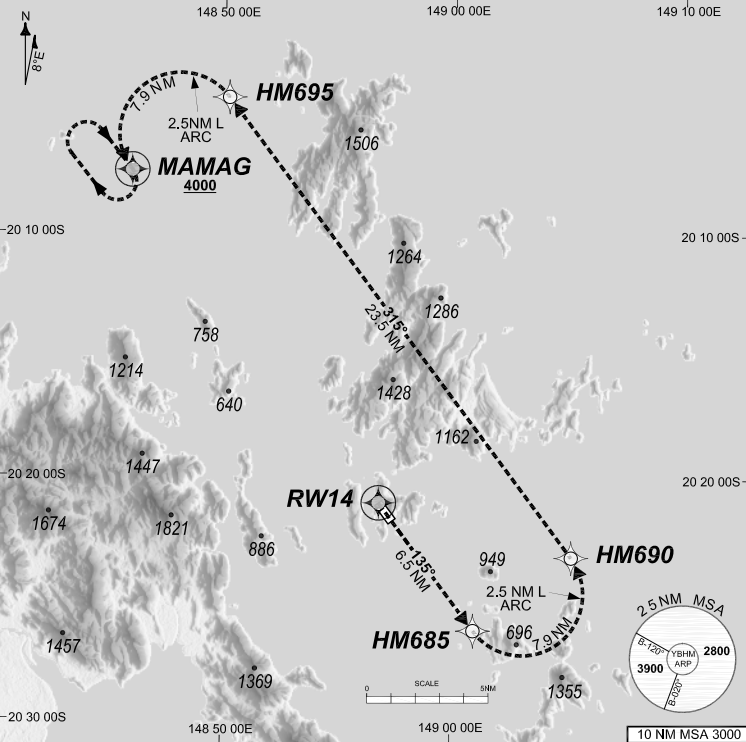
RNP AR APCH
- RF RQ
- YBHM ACT QNH RQ
- YBHM ACT TEMP RQ
- PROC TEMP RANGE
+14°C TO +36°C



| TR | INTURN | TIME | MIN ALT | DME LMT |
|------|--------|------|---------|---------|
| 135° | Right | 1' | 4000 | |



AD ELEV 15
Bearings are Magnetic
Elevations in FEET AMSL



ENGINE OUT MISSED APPROACH:

Track via the RNP AR Engine Out Missed Approach track to MAMAG and hold as published.

Acceleration altitude see Go-Around Safety Assessment.
Continue to climb in hold as necessary to 4000FT, or as directed by ATC. EO hold only, not contained in CTA. Maximum holding speed **230 KIAS**.

20210929/1239 COPYRIGHT 2021 NAVERUS, INC. USA

Revision: From SUP H97/21, chart title

BHMG04-170

DO NOT USE FOR NAVIGATION

Prepared by GE Aviation

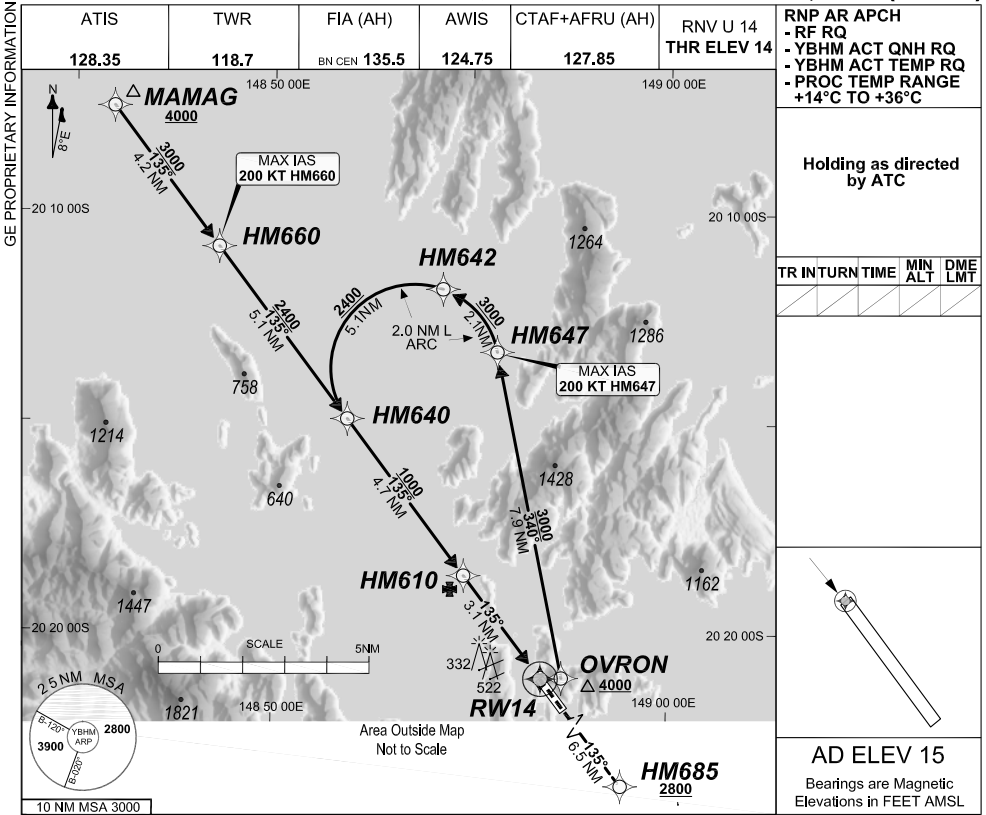


FOR CASA APPROVED
OPERATORS ONLY

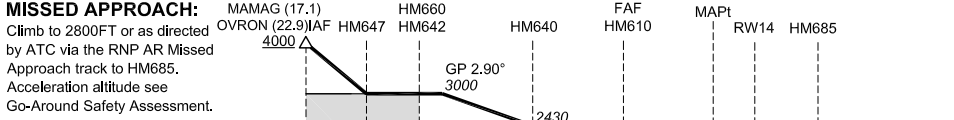
24 MAR 2022

USE QNH

HAMILTON ISLAND, QLD (YBHM)



| | | | | | | |
|-----------------------|--|---------------|---------------|---------------|---------------|------------|
| ALT (2.90° APCH PATH) | | HM660 4000 | HM642 4000 | HM640 2430 | HM610 1000 | RW14 62 |
|-----------------------|--|---------------|---------------|---------------|---------------|------------|



| | | | | | | | | |
|--|----------------------|---------------|---------------|---------------|---------------|------------|------------|---------------|
| MISSED APPROACH: Climb to 2800FT or as directed by ATC via the RNP AR Missed Approach track to HM685. Acceleration altitude see Go-Around Safety Assessment. | MAMAG (17.1) 4000 | HM660 4000 | HM642 4000 | HM640 2430 | HM610 1000 | MAPt 62 | RW14 62 | HM685 2800 |
|--|----------------------|---------------|---------------|---------------|---------------|------------|------------|---------------|

| | | | | | | | |
|--|----------|----|------|-----|-----|-----|----------------|
| ENGINE OUT MISSED APPROACH: SEE PAGE 2 | TCH 48FT | 15 | 12.9 | 7.8 | 3.1 | 6.5 | THR 14 ELEV 14 |
|--|----------|----|------|-----|-----|-----|----------------|

| CATEGORY | A | B | C | D |
|------------|----------------|---|-----------------------|---|
| RNP (0.30) | NOT APPLICABLE | | DA(H) 653' (639')-3.6 | |
| RNP () | NOT APPLICABLE | | DA(H) ()-. . | |
| RNP () | NOT APPLICABLE | | DA(H) ()-. . | |
| RNP () | NOT APPLICABLE | | DA(H) ()-. . | |
| CIRCLING | | | NOT AUTHORISED | |

- NOTES**
- PROC AVBL up to MLW.
 - Lateral transition to MAP must not be initiated prior to DA/H PSN.
 - APCH Path does not coincide with PAPI glide path 3°.
 - Transient yacht masts may infringe RWY 14 visual approach slope clearance.
 - See Engineering Report for Minimum MAP gradient (AE) to 2800 FT.

20210930/1556 COPYRIGHT 2021 NAVERUS, INC. USA

Revision: From SUP H97/21, chart title

BHMGN05-170

DO NOT USE FOR NAVIGATION

Prepared by GE Aviation



**FOR CASA APPROVED
OPERATORS ONLY**

24 MAR 2022

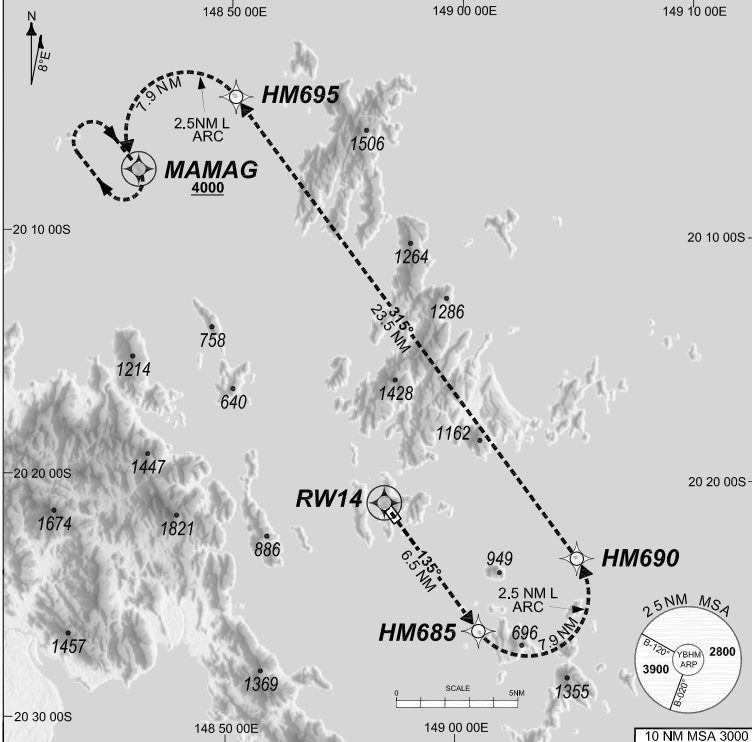
USE QNH

HAMILTON ISLAND, QLD (YBHM)

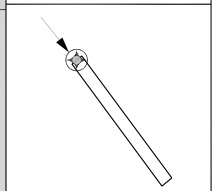
GE PROPRIETARY INFORMATION

| | | | | | |
|-----------------------|---------------------|---------------------------------|-----------------------|---------------------------------|-------------------------|
| ATIS 128.35 | TWR 118.7 | FIA (AH) BN CEN 135.5 | AWIS 124.75 | CTAF+AFRU (AH) 127.85 | RNV U 14 THR ELEV 14 |
|-----------------------|---------------------|---------------------------------|-----------------------|---------------------------------|-------------------------|

RNP AR APCH
 - RF RQ
 - YBHM ACT QNH RQ
 - YBHM ACT TEMP RQ
 - PROC TEMP RANGE
 +14°C TO +36°C



| TR IN | TURN | TIME | MIN ALT | DME LMT |
|-------|-------|------|---------|---------|
| 135° | Right | 1' | 4000 | |



AD ELEV 15
 Bearings are Magnetic
 Elevations in FEET AMSL

ENGINE OUT MISSED APPROACH:

Track via the RNP AR Engine Out Missed Approach track to MAMAG and hold as published.

Acceleration altitude see Go-Around Safety Assessment.
 Continue to climb in hold as necessary to 4000FT, or as directed by ATC. EO hold only, not contained in CTA. Maximum holding speed **230 KIAS**.

2021/09/29/1240 COPYRIGHT © 2021 NAVERUS, INC. USA

Revision: From SUP H97/21, chart title

BHMG06-170

DO NOT USE FOR NAVIGATION

Prepared by GE Aviation

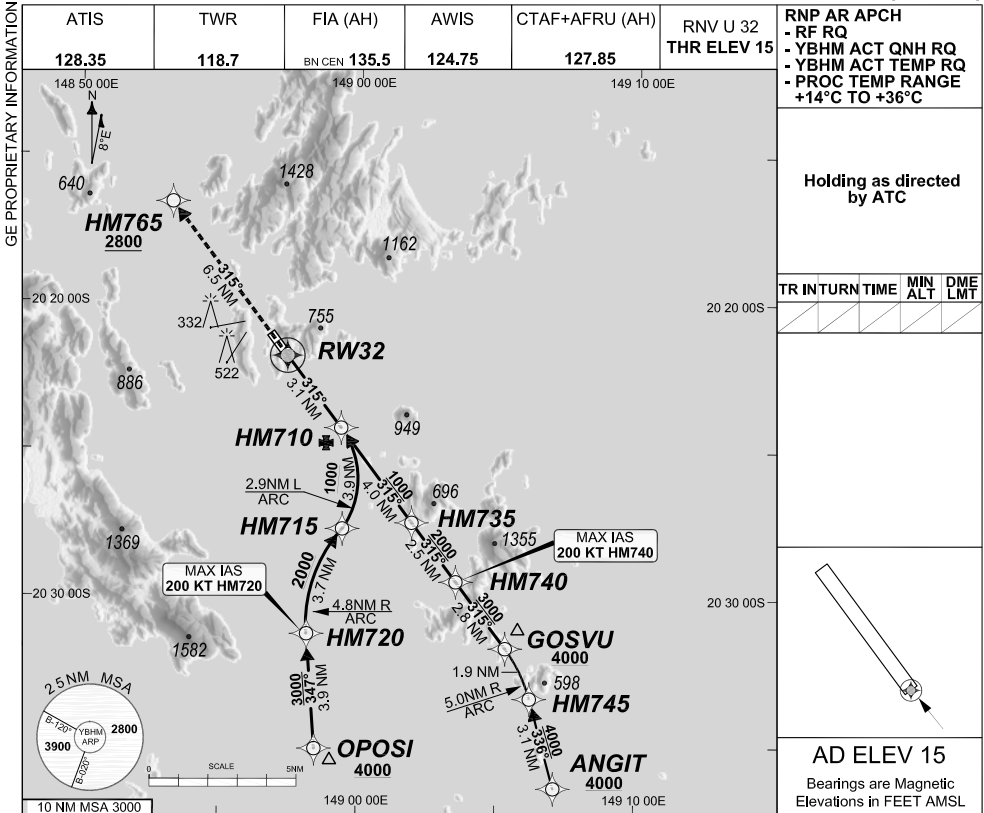


FOR CASA APPROVED OPERATORS ONLY

24 MAR 2022

USE QNH

HAMILTON ISLAND, QLD (YBHM)



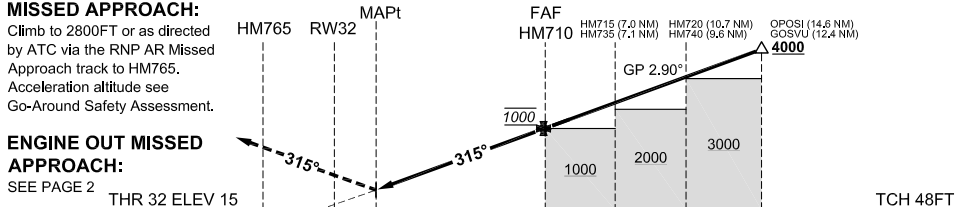
RNP AR APCH
 - RF RQ
 - YBHM ACT QNH RQ
 - YBHM ACT TEMP RQ
 - PROC TEMP RANGE +14°C TO +36°C

Holding as directed by ATC

| TR | INTURN | TIME | MIN ALT | DME LMT |
|----|--------|------|---------|---------|
| | | | | |

AD ELEV 15
 Bearings are Magnetic Elevations in FEET AMSL

| ALT (2.90° APCH PATH) | RW32 | HM710 | HM715 | HM735 | HM740 | HM720 |
|-----------------------|------|-------|-------|-------|-------|-------|
| | 63 | 1000 | 2180 | 2230 | 3000 | 3300 |



MISSED APPROACH:
 Climb to 2800FT or as directed by ATC via the RNP AR Missed Approach track to HM765. Acceleration altitude see Go-Around Safety Assessment.

ENGINE OUT MISSED APPROACH:
 SEE PAGE 2

NOTES

- PROC AVBL up to MLW.
- Lateral transition to MAP must not be initiated prior to DA/H PSN.
- APCH Path does not coincide with PAPI glide path 3°.
- Transient yacht masts may infringe RWY 32 visual approach slope clearance.
- See Engineering Report for Minimum MAP gradient (AE) to 2800 FT.

| CATEGORY | A | B | C | D |
|------------|----------------|---|-----------------------|---|
| RNP (0.30) | NOT APPLICABLE | | DA(H) 628' (613')-3.4 | |
| RNP () | NOT APPLICABLE | | DA(H) () - . | |
| RNP () | NOT APPLICABLE | | DA(H) () - . | |
| RNP () | NOT APPLICABLE | | DA(H) () - . | |
| CIRCLING | | | NOT AUTHORISED | |

202109301941 COPYRIGHT 2021 NAVERUS, INC. USA

Revision: From SUP H97/21, chart title

BHMG07-170

DO NOT USE FOR NAVIGATION

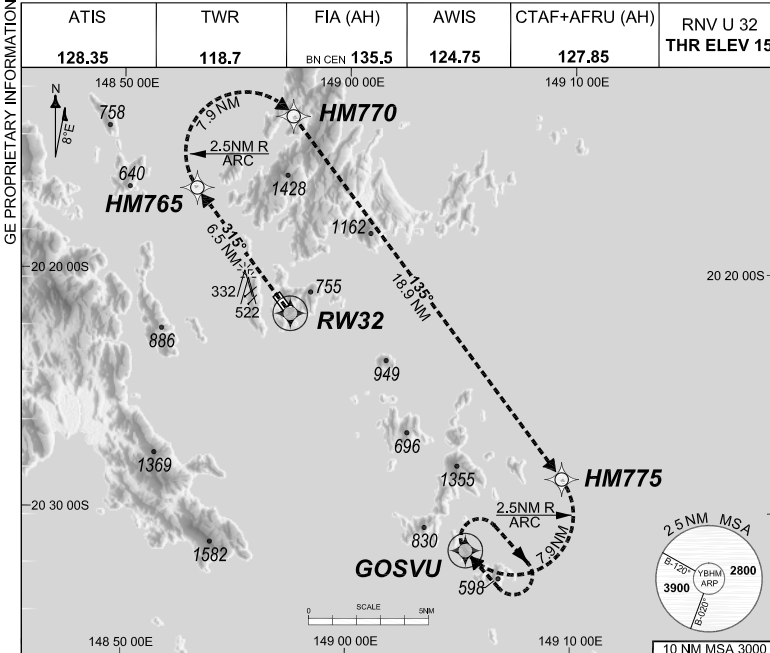
Prepared by GE Aviation



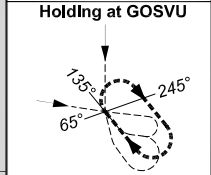
24 MAR 2022

USE QNH

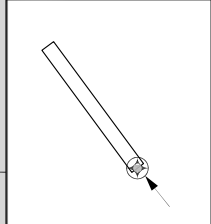
HAMILTON ISLAND, QLD (YBHM)



RNP AR APCH
- RF RQ
- YBHM ACT QNH RQ
- YBHM ACT TEMP RQ
- PROC TEMP RANGE
+14°C TO +36°C



| TR IN TURN | TIME | MIN ALT | DME LMT |
|------------|------|---------|---------|
| 315° Right | 1' | 4000 | |



AD ELEV 15
Bearings are Magnetic
Elevations in FEET AMSL

ENGINE OUT MISSED APPROACH:

Track via the RNP AR Engine Out Missed Approach track to GOSVU and hold as published.

Acceleration altitude see Go-Around Safety Assessment.
Continue to climb in hold as necessary to 4000FT, or as directed by ATC. EO hold only, not contained in CTA. Maximum holding speed **230 KIAS**.

202109231255 COPYRIGHT 2021 NAVERUS, INC. USA

Revision: From SUP H97/21, chart title

BHMGN08-170

DO NOT USE FOR NAVIGATION

Prepared by GE Aviation



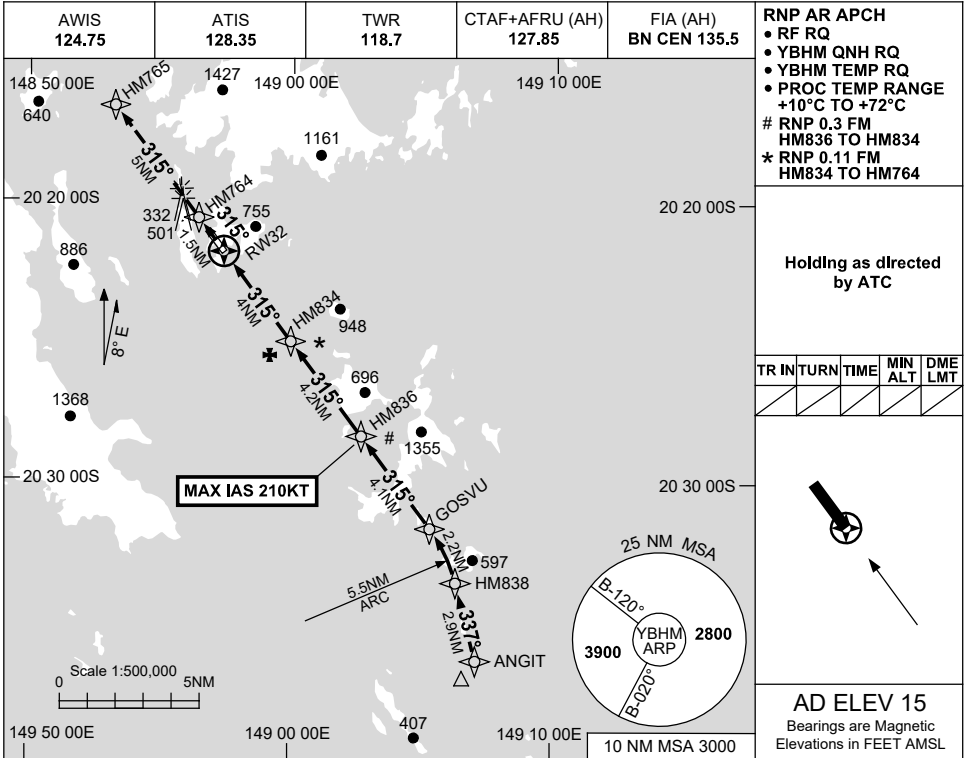
FOR CASA APPROVED OPERATORS ONLY

USE QNH

RNP W RWY 32 (AR)

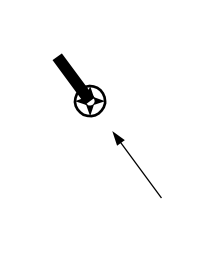
HAMILTON ISLAND, QLD (YBHM)

15 JUN 2023



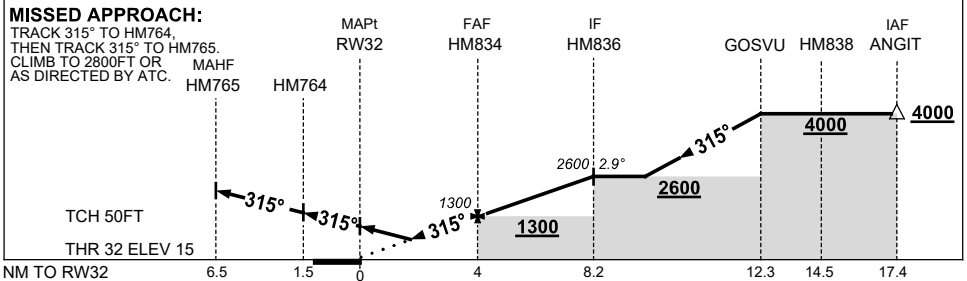
Holding as directed by ATC

| TR | IN | TURN | TIME | MIN ALT | DME LMT |
|----|----|------|------|---------|---------|
| | | | | | |



AD ELEV 15
 Bearings are Magnetic
 Elevations in FEET AMSL

| NM TO NEXT WPT | RW32 | 2.2 | 3 | HM834 | 1 | 2 | 3 | 4 | HM836 | | | |
|----------------------|------|-----|------|-------|------|------|------|------|-------|--|--|--|
| ALT (2.9° APCH PATH) | 730 | 990 | 1300 | 1610 | 1920 | 2220 | 2530 | 2600 | | | | |



NOTES

| CATEGORY | A | B | C | D |
|------------|----------------------|------------|------------|---|
| RNP (0.11) | 460 (445-2.6) | | | |
| CIRCLING | NOT AUTHORISED | | | |
| ALTERNATE | (1425-4.4) | (1525-6.0) | (1875-7.0) | |

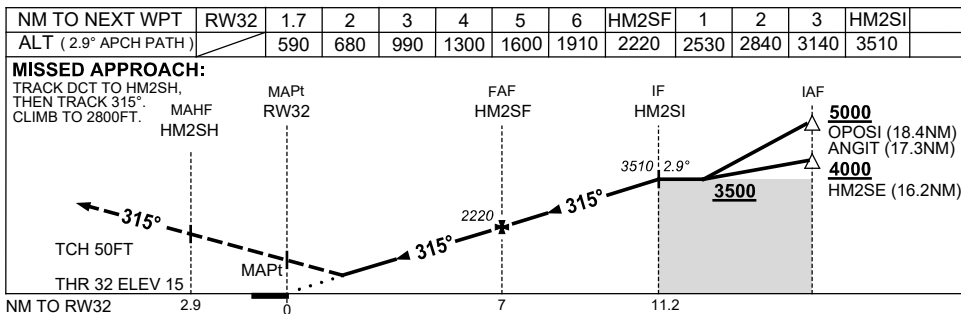
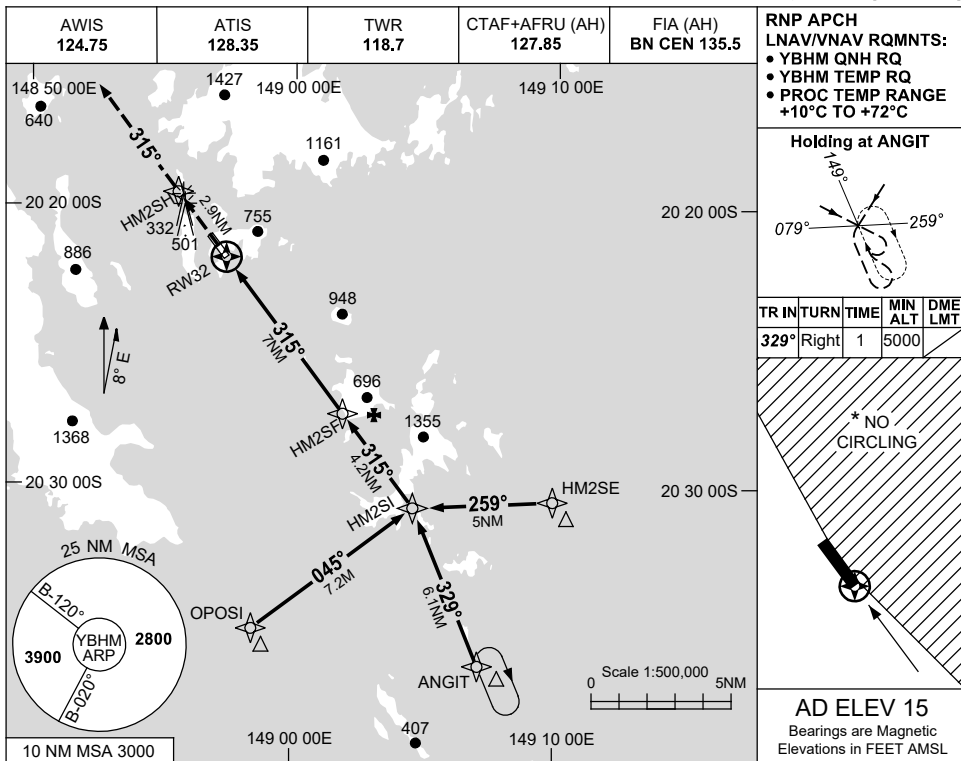
1. MAX IAS:
 HM836 : 210KT.

Changes: FROM SUP H05/23.

BHMGNO9-175

**USE QNH RNP Y RWY 32 (LNAV/VNAV ONLY)
HAMILTON ISLAND, QLD (YBHM)**

15 JUN 2023



NOTES

1. MAX IAS: INITIAL : 210KT.
- * 2. NO CIRCLING EAST OF RWY 14/32.

| CATEGORY | A | B | C | D |
|---------------------|------------------------|------------------------|------------------------|---|
| LNAV/VNAV(4.1% MAP) | 590 (575-3.4) | | | |
| LNAV/VNAV(2.5% MAP) | 670 (655-3.8) | | | |
| CIRCLING * | 1040 (1025-2.4) | 1140 (1125-4.0) | 1490 (1475-5.0) | |
| ALTERNATE | (1525-4.4) | (1625-6.0) | (1975-7.0) | |

Changes: FROM SUP H05/23.

BHMG10-175

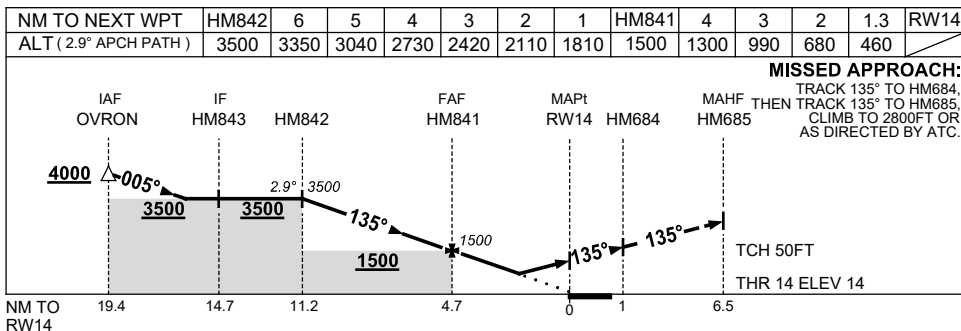
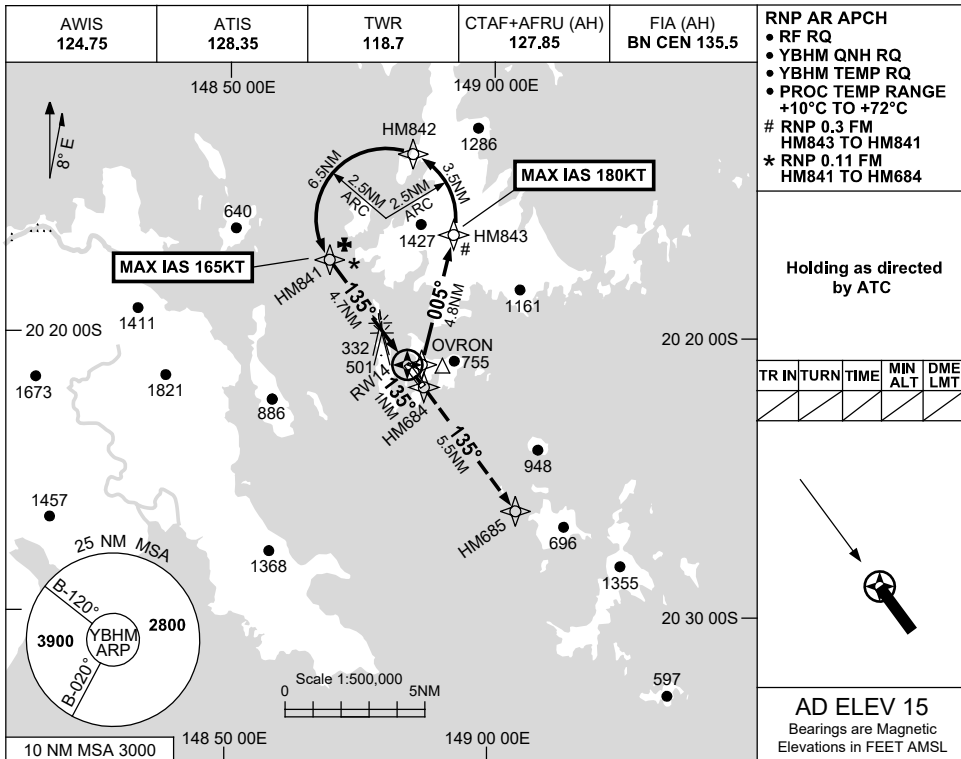
FOR CASA APPROVED OPERATORS ONLY

USE QNH

RNP W RWY 14 (AR)

15 JUN 2023

HAMILTON ISLAND, QLD (YBHM)



NOTES

- MAX IAS:
 HM843 : 180KT.
 HM841 : 165KT.

| CATEGORY | A | B | C | D |
|------------|----------------------|------------|------------|---|
| RNP (0.11) | 460 (446-2.6) | | | |
| CIRCLING | NOT AUTHORISED | | | |
| ALTERNATE | (1425-4.4) | (1525-6.0) | (1875-7.0) | |

Changes: FROM SUP H05/23.

BHMG11-175

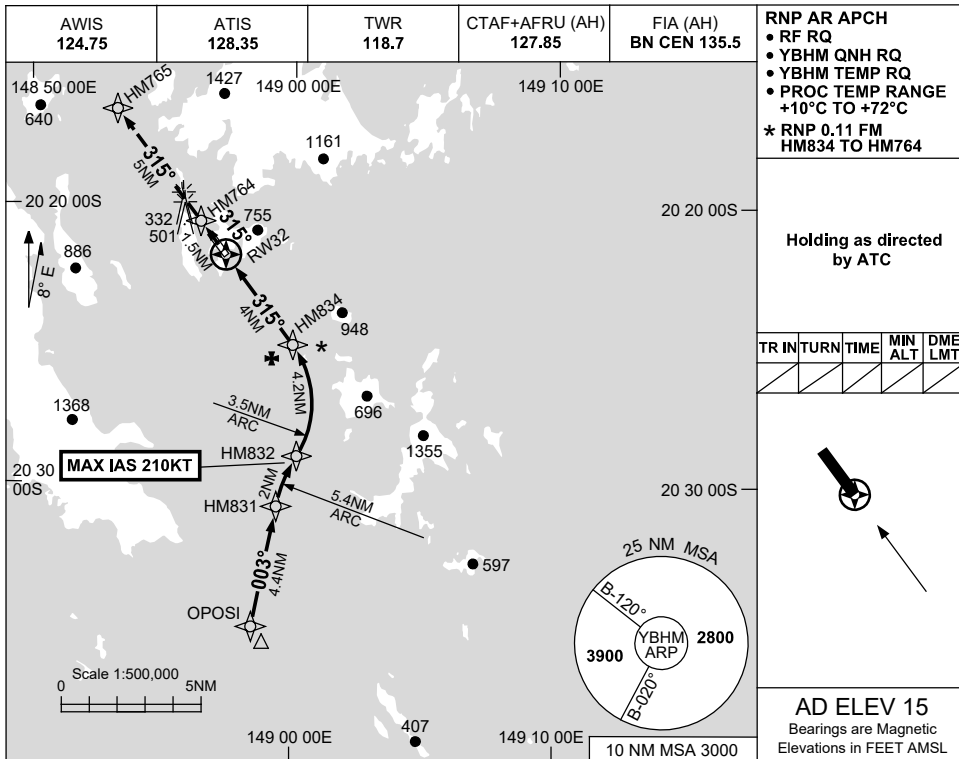
FOR CASA APPROVED OPERATORS ONLY

USE QNH

RNP X RWY 32 (AR)

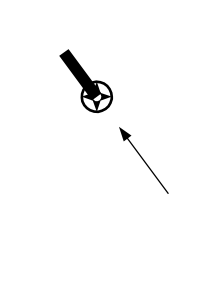
15 JUN 2023

HAMILTON ISLAND, QLD (YBHM)



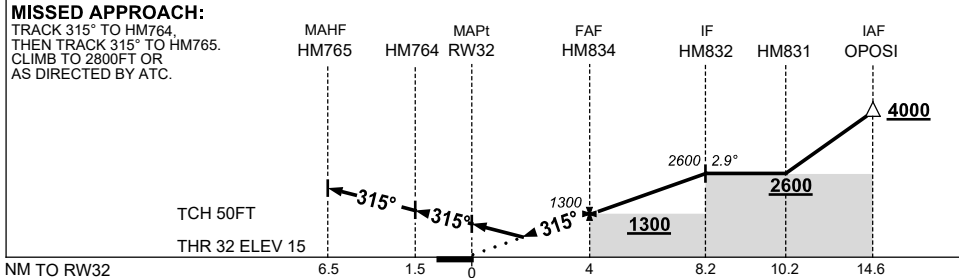
Holding as directed by ATC

| TR | IN | TURN | TIME | MIN ALT | DME LMT |
|----|----|------|------|---------|---------|
| | | | | | |



AD ELEV 15
 Bearings are Magnetic
 Elevations in FEET AMSL

| NM TO NEXT WPT | RW32 | 1.3 | 2 | 3 | HM834 | 1 | 2 | 3 | 4 | HM832 | | |
|----------------------|------|-----|-----|-----|-------|------|------|------|------|-------|--|--|
| ALT (2.9° APCH PATH) | | 460 | 680 | 990 | 1300 | 1610 | 1920 | 2220 | 2530 | 2600 | | |



NOTES

1. MAX IAS:
 HM832 : 210KT.

| CATEGORY | A | B | C | D |
|------------|----------------|---------------|------------|------------|
| RNP (0.11) | | 460 (445-2.6) | | |
| CIRCLING | NOT AUTHORISED | | | |
| ALTERNATE | (1425-4.4) | | (1525-6.0) | (1875-7.0) |

Changes: FROM SUP H05/23.

BHMG12-175

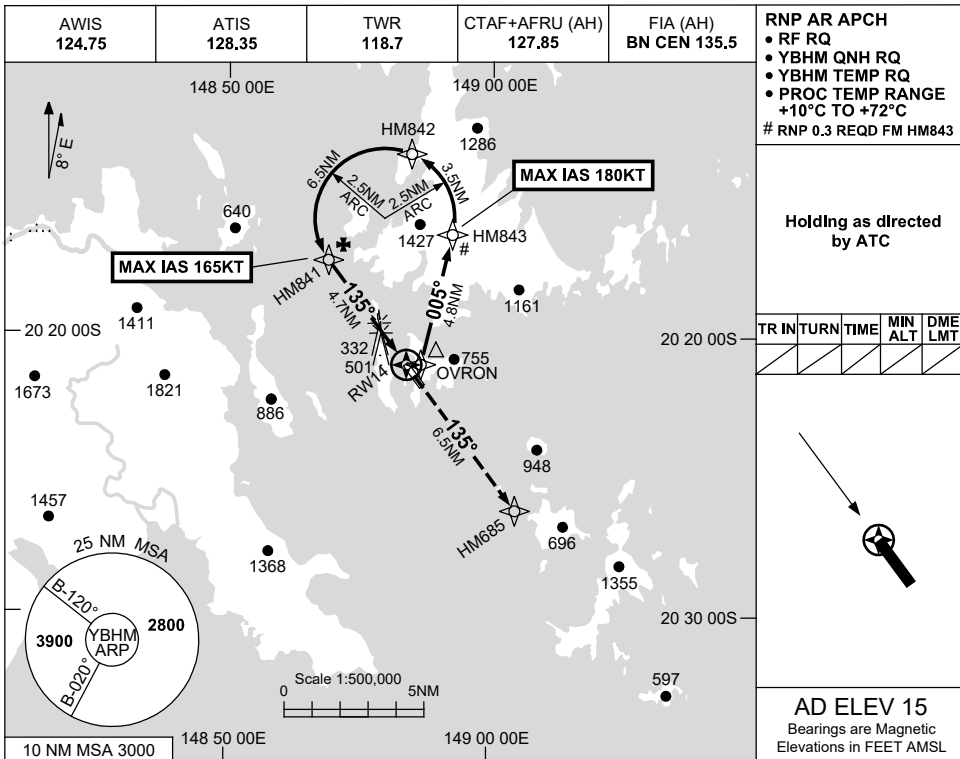
FOR CASA APPROVED OPERATORS ONLY

USE QNH

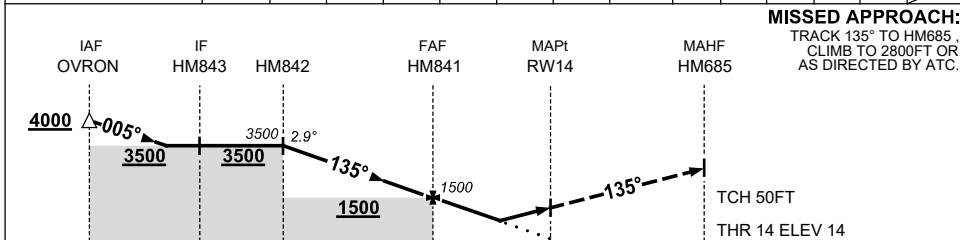
RNP Y RWY 14 (AR)

HAMILTON ISLAND, QLD (YBHM)

1 DEC 2022



| | | | | | | | | | | | | | | |
|----------------------|-------|------|------|------|------|------|------|-------|------|-----|-----|-----|-----|------|
| NM TO NEXT WPT | HM842 | 6 | 5 | 4 | 3 | 2 | 1 | HM841 | 4 | 3 | 2.3 | 1.8 | 1.6 | RW14 |
| ALT (2.9° APCH PATH) | 3500 | 3350 | 3040 | 2730 | 2420 | 2110 | 1810 | 1500 | 1300 | 990 | 760 | 610 | 550 | |



| CATEGORY | A | B | C | D |
|----------------------|----------------|---------------|------------|------------|
| RNP (0.3) | | 760 (746-4.4) | | |
| RNP (0.11)(2.5% MAP) | | 610 (596-3.5) | | |
| RNP (0.11)(4.5% MAP) | | 550 (536-3.1) | | |
| CIRCLING | NOT AUTHORISED | | | |
| ALTERNATE | (1425-4.4) | | (1525-6.0) | (1875-7.0) |

- NOTES**
- MAX IAS:
HM843 : 180KT.
HM841 : 165KT.

Changes: FROM SUP H81/22.

BHMG13-173