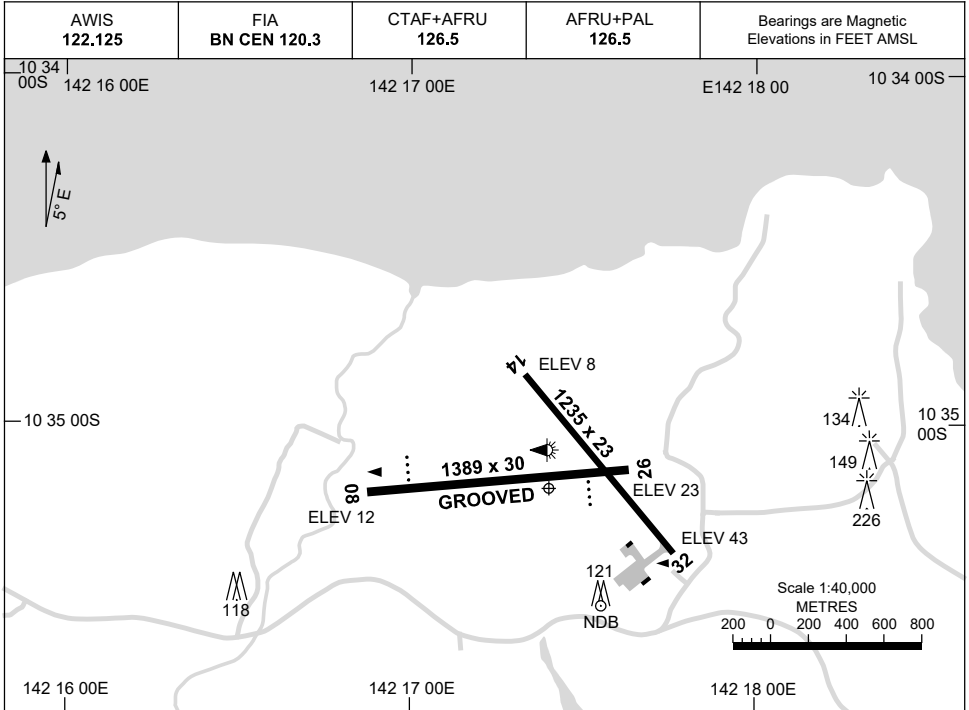


15 JUN 2023

AD ELEV 43  
10 35 11S 142 17 24E

**AERODROME CHART**  
**HORN ISLAND, QLD (YHID)**



	<b>AERODROME LIGHTING</b>	
<b>RWY</b>	TAXIWAY : BLUE EDGE RL : AFRU+PAL 126.5 , SDBY (15 SEC) FOR RWY 08/26 ONLY , PTBL PN.	
<b>08</b> <small>080</small>	PAPI 3.0° 44FT LIRL	
<small>260</small> <b>26</b>	PAPI 3.2° 50FT LIRL	
<b>14</b> <small>135</small>	NIL	
<small>375</small> <b>32</b>	NIL	

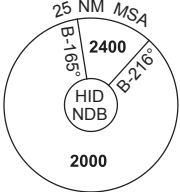
**NOTES**

Changes: NOTE.

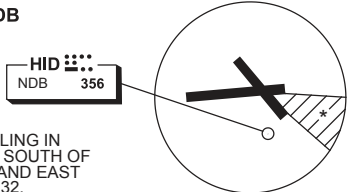
HIDAD01-175

**27 FEB 2020**

AWIS 122.125	FIA BN CEN 120.3	CTAF+AFRU 126.5	AFRU+PAL 126.5		Bearings are Magnetic Elevations in FEET AMSL
-----------------	---------------------	--------------------	-------------------	--	--



**REFERENCE WAYPOINT HID NDB**



\* NO CIRCLING IN SECTOR SOUTH OF RWY 26 AND EAST OF RWY 32. LANDING NOT PERMITTED RWY 32.

10 NM MSA 2000

AD ELEV 43

**SECTOR A**

**MISSED APPROACH:**  
CLIMB ON TRACK TO 2400FT.

NM TO NDB	25	16	7	5	4	0													
<b>CIRCLING MINIMA</b>	A,B: 970-2.4		C: 1030-4.0		D: N/A														
NM TO NDB	5.1	5	4	3	2.1	2	1.8												
ALT (3° APCH PATH)	2000	1970	1650	1330	1030	1010	970												

**SECTOR B**

**MISSED APPROACH:**  
CLIMB ON TRACK TO 2000FT.

NM TO NDB	25	15	9	5	0														
<b>CIRCLING MINIMA</b>	A,B: 970-2.4		C: 1030-4.0		D: N/A														
NM TO NDB	7.2	7	6	5	4	3	2.9	2.7											
ALT (3° APCH PATH)	2400	2340	2020	1700	1380	1060	1030	970											

**SECTOR C**

**MISSED APPROACH:**  
CLIMB ON TRACK TO 2000FT.

NM TO NDB	25	15	6	5	0														
<b>CIRCLING MINIMA</b>	A,B: 1000-2.4		C: 1030-4.0		D: N/A														
NM TO NDB	5.8	5	4	3	2.8	2.7													
ALT (3° APCH PATH)	2000	1750	1430	1110	1030	1000													

Changes: CAT C MINIMA, SECTOR B MIN ALT, DIST/ALT.

HIDG01-162

**GNSS ARRIVAL PROCEDURES  
HORN ISLAND, QLD (YHID) Page 2**

**27 FEB 2020**

AWIS 122.125	FIA BN CEN 120.3	CTAF+AFRU 126.5	AFRU+PAL 126.5		Bearings are Magnetic Elevations in FEET AMSL
-----------------	---------------------	--------------------	-------------------	--	--

**REFERENCE WAYPOINT HID NDB**

\* NO CIRCLING IN SECTOR SOUTH OF RWY 26 AND EAST OF RWY 32. LANDING NOT PERMITTED RWY 32.

AD ELEV 43

**SECTOR D**

**MISSED APPROACH:**  
CLIMB ON TRACK TO 2400FT.

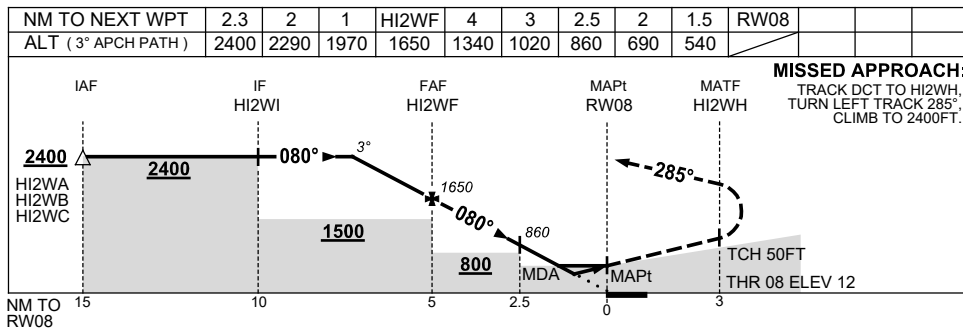
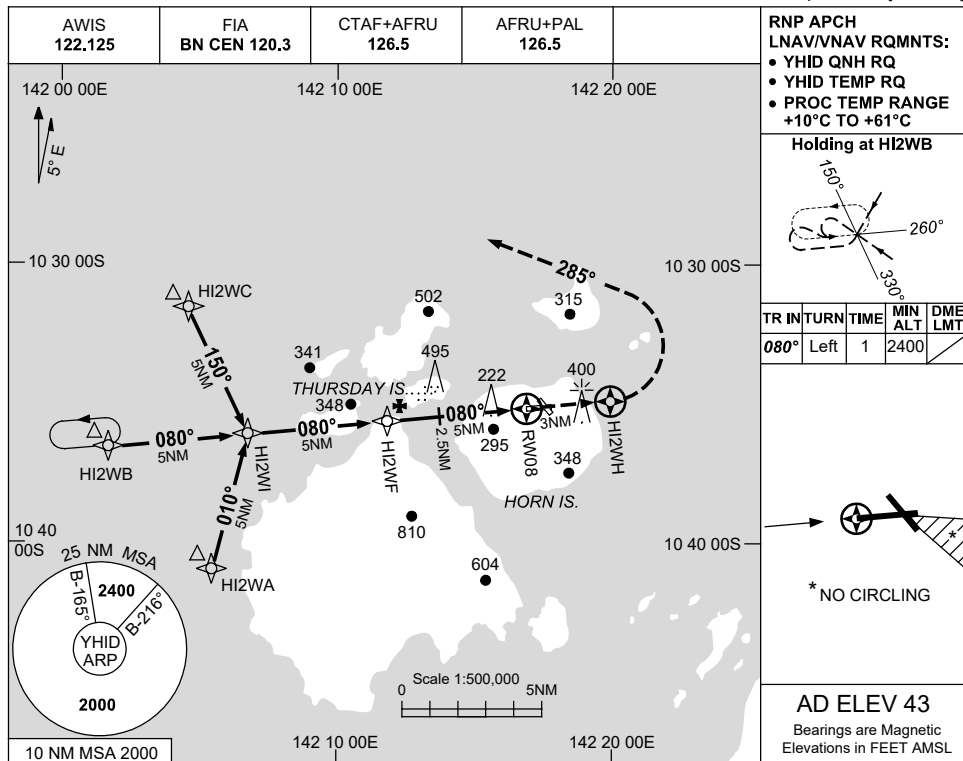
NM TO NDB	35	25	16	7	6	4	0												
<b>CIRCLING MINIMA</b>	A,B: 970-2.4			C: 1030-4.0			D: N/A												
NM TO NDB	6	5	4	3	2.9	2.7													
ALT (3° APCH PATH)	2000	1700	1380	1060	1030	970													

USE QNH

RNP RWY 08

**HORN ISLAND, QLD (YHID)**

7 SEP 2023



**NOTES**

CATEGORY	A	B	C	D
LNAV/VNAV	540 (528-3.0)			NOT APPLICABLE
LNAV	690 (678-3.9)			
CIRCLING *	970 (927-2.4)		1030 (987-4.0)	
ALTERNATE	(1427-4.4)		(1487-6.0)	

- MAX IAS:  
INITIAL : 210KT.
- NO CIRCLING IN SECTOR SOUTH OF RWY 26 AND EAST OF RWY 32.
- LANDING NOT PERMITTED RWY 32.

Changes: WPT NAMING CONVENTION, MIN ALT.

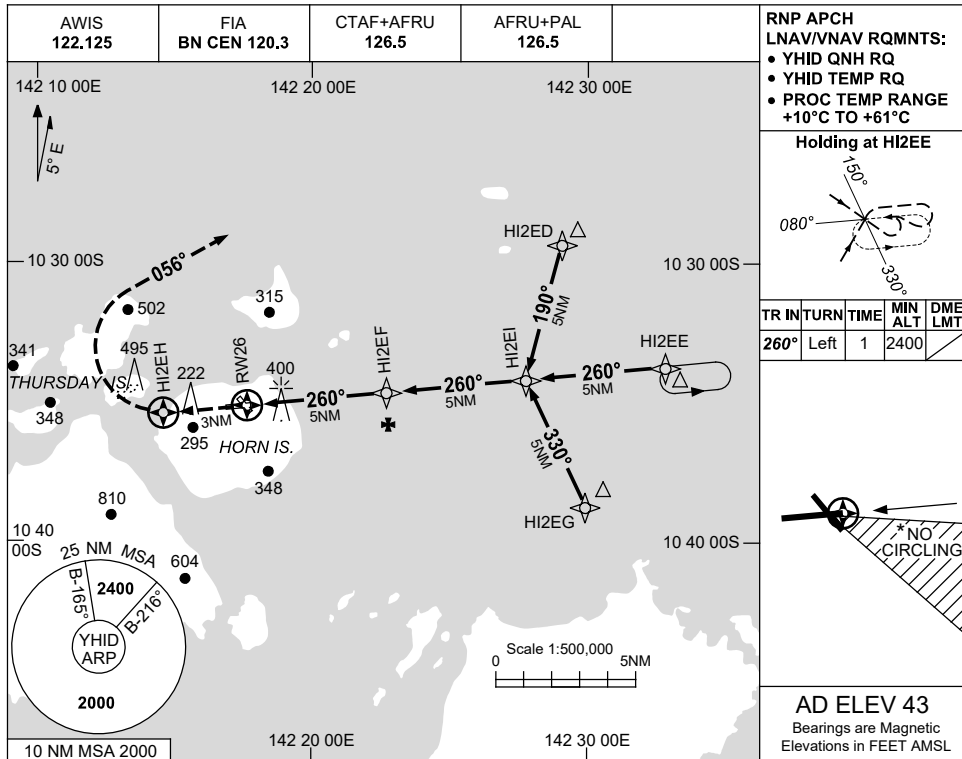
HIDGN01-176

USE QNH

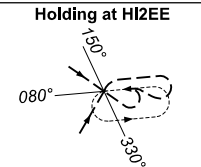
RNP RWY 26

**HORN ISLAND, QLD (YHID)**

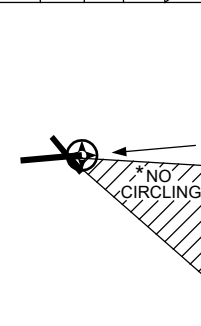
7 SEP 2023



**RNP APCH**  
**LNAV/VNAV RQMNTS:**  
 • YHID QNH RQ  
 • YHID TEMP RQ  
 • PROC TEMP RANGE  
 +10°C TO +61°C

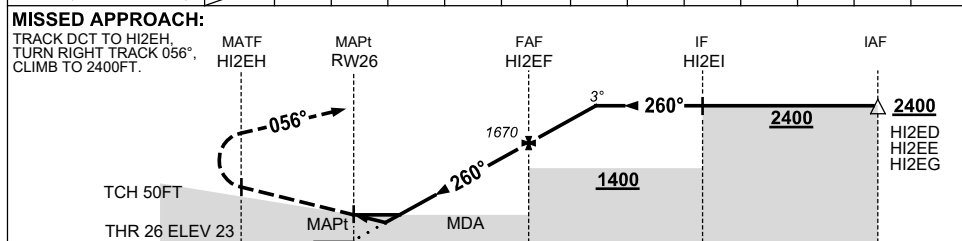


TR	IN	TURN	TIME	MIN ALT	DME LMT
260°	Left	1	2400		



**AD ELEV 43**  
 Bearings are Magnetic  
 Elevations in FEET AMSL

NM TO NEXT WPT	RW26	1.9	2.4	3	4	HI2EF	1	2.3				
ALT (3° APCH PATH)		670	830	1030	1350	1670	1980	2400				



- NOTES**
1. MAX IAS: INITIAL : 210KT.
  - \* 2. NO CIRCLING IN SECTOR SOUTH OF RWY 26 AND EAST OF RWY 32.
  3. LANDING NOT PERMITTED RWY 32.
  4. VERTICAL PATH NOT ALIGNED WITH PAPI RWY 26.

CATEGORY	A	B	C	D
LNAV/VNAV	670 (647-3.7)			NOT APPLICABLE
LNAV	830 (807-4.6)			
CIRCLING *	970 (927-2.4)		1030 (987-4.0)	
ALTERNATE	(1427-4.4)		(1487-6.0)	

Changes: WPT NAMING CONVENTION. HIDGN02-176



