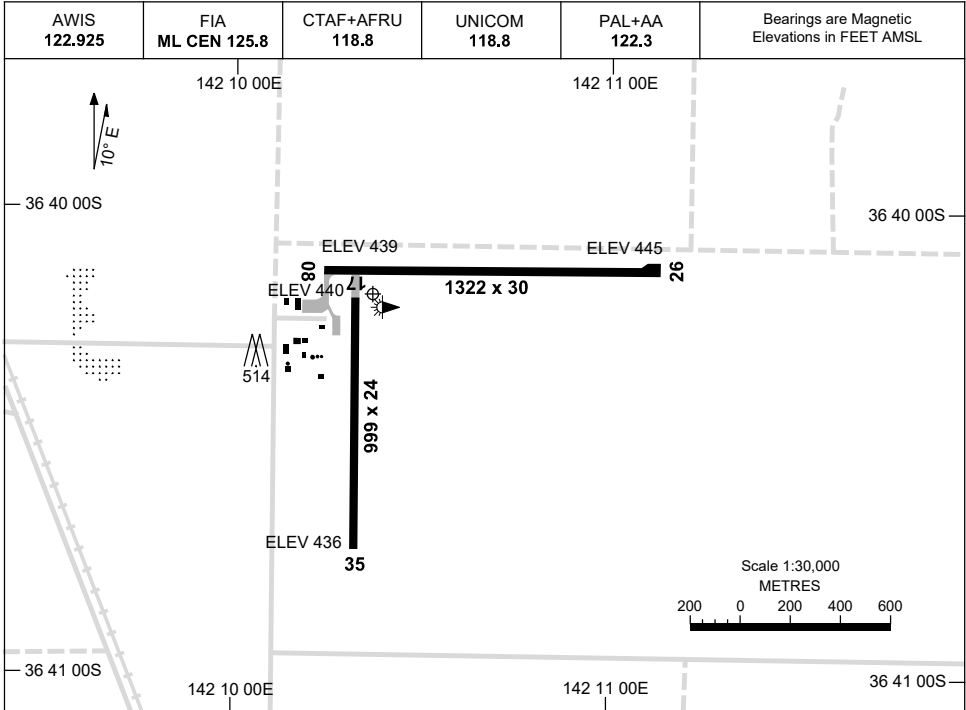


15 JUN 2023

AD ELEV 445
36 40 11S 142 10 22E

AERODROME CHART
HORSHAM, VIC (YHSM)



	AERODROME INFORMATION
RWY	TAXIWAY : BLUE EDGE RL : PAL+AA 122.3 , SDBY , PTBL (60 MIN PN)
08 <small>080</small>	LIRL PTBL
<small>260</small> 26	LIRL PTBL
17 <small>170</small>	LIRL PTBL
<small>350</small> 35	LIRL PTBL

NOTES

1. AWIS REQ 1 SEC PULSE TO ACTIVATE.

Changes: NOTES.

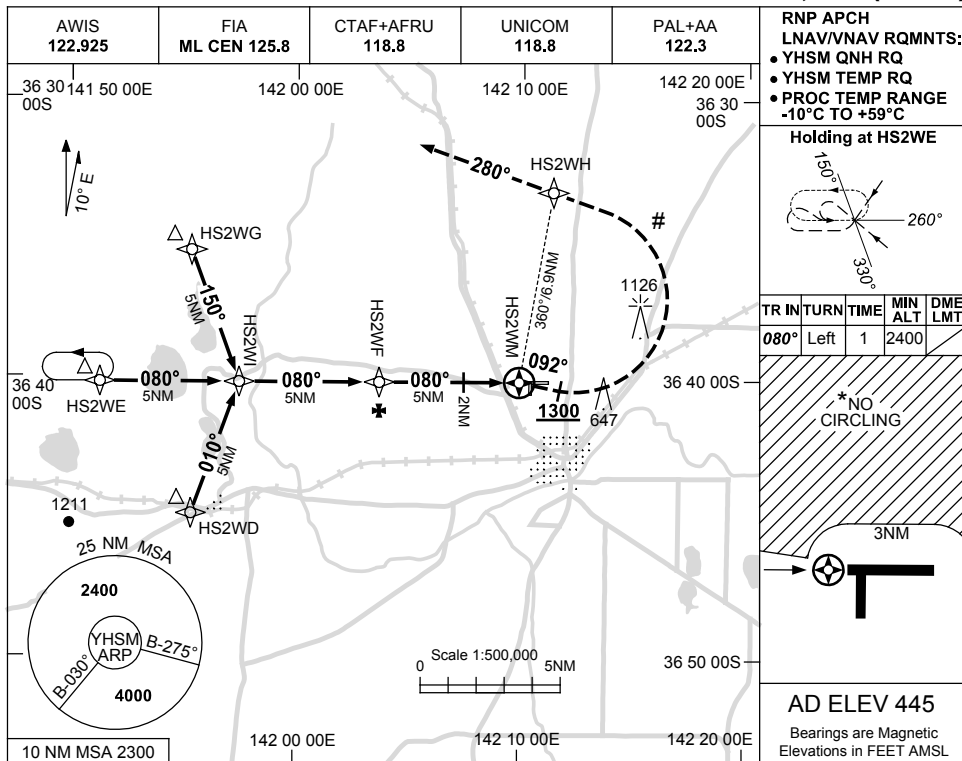
HSMAD01-175

USE QNH

RNP RWY 08

HORSHAM, VIC (YHSM)

15 JUN 2023



RNP APCH LNAV/VNAV RQMNTS:

- YHSM QNH RQ
- YHSM TEMP RQ
- PROC TEMP RANGE -10°C TO +59°C

Holding at HS2WE

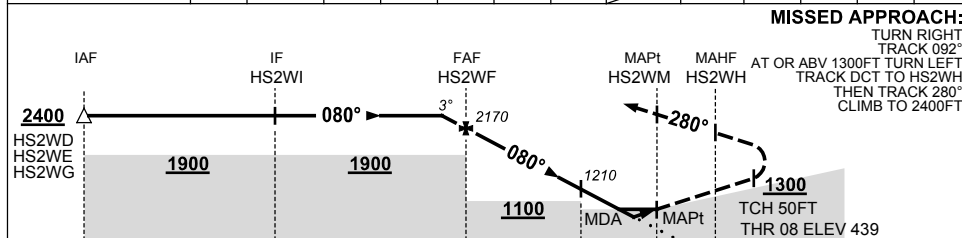
TR IN	TURN	TIME	MIN ALT	DME LMT
080°	Left	1	2400	

* NO CIRCLING

AD ELEV 445

Bearings are Magnetic
Elevations in FEET AMSL

NM TO NEXT WPT	0.7	HS2WF	4	3	2	1.1	0.5	HS2WM				
ALT (3° APCH PATH)	2400	2170	1850	1530	1210	940	750					



NOTES

1. MAX IAS: INITIAL : 210KT.
- * 2. NO CIRCLING NTH OF RWYS 08/26 BEYOND 3NM.
- # 3. MISSED APCH OVERLAID BY YWKB RNP RWY 08 HOLDING.

CATEGORY	A	B	C	D
LNAV/VNAV		750 (311-1.7)		NOT APPLICABLE
LNAV		940 (495-2.8)		
CIRCLING *	1120 (675-2.4)		1160 (715-4.0)	
ALTERNATE	(1175-4.4)		(1215-6.0)	

Changes: WPT NAMING CONVENTION, NOTES, CHART TITLE, Editorial.

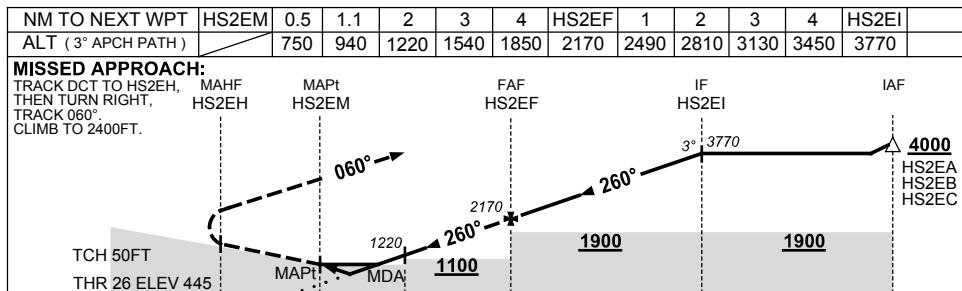
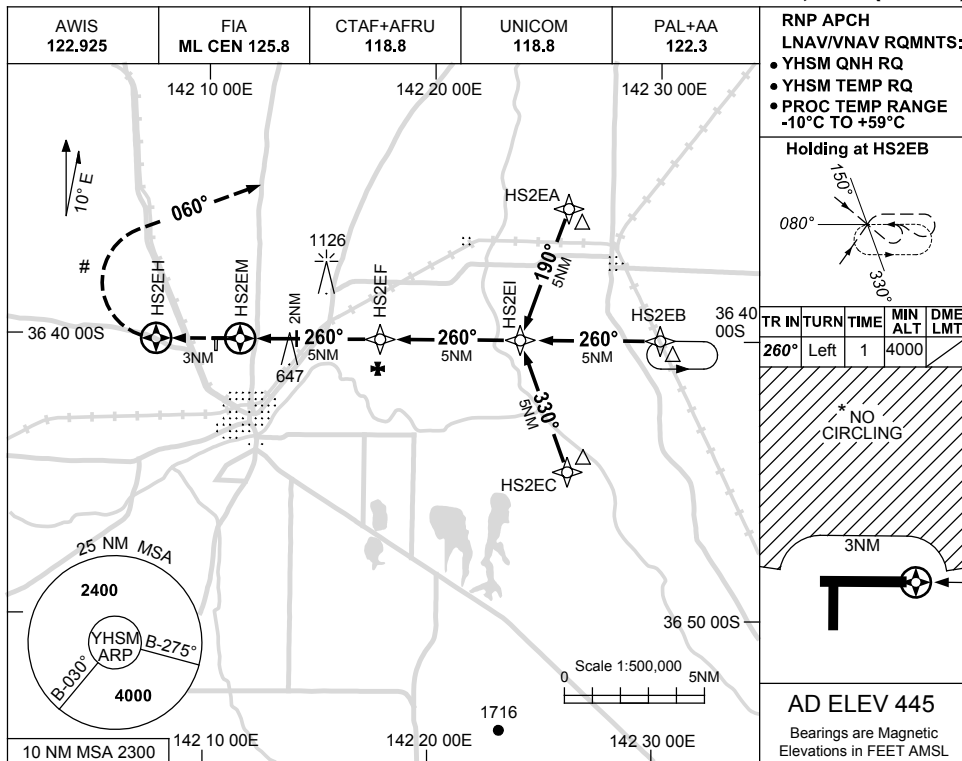
HSMGN01-175

USE QNH

RNP RWY 26

HORSHAM, VIC (YHSM)

15 JUN 2023



NOTES

CATEGORY	A	B	C	D
LNAV/VNAV		750 (305-1.7)		NOT APPLICABLE
LNAV		940 (495-2.8)		
CIRCLING *	1120 (675-2.4)		1160 (715-4.0)	
ALTERNATE	(1175-4.4)		(1215-6.0)	

- MAX IAS: INITIAL : 210KT.
- NO CIRCLING NTH OF RWYS 08/26 BEYOND 3NM.
- MISSED APCH OVERLAID BY YWKB RNP RWY 08 HOLDING.

Changes: WPT NAMING CONVENTION, NOTES, CHART TITLE, Editorial.

HSMGN02-175